

Contents [[hide](#)]

[1 EPS CSCSPR10-16D4 Changeover Switch](#)

[2 Specifications](#)

[3 Introduction](#)

[4 Changeover Switches](#)

[5 FAQ](#)

[6 Documents / Resources](#)

[6.1 References](#)



EPS CSCSPR10-16D4 Changeover Switch



Specifications

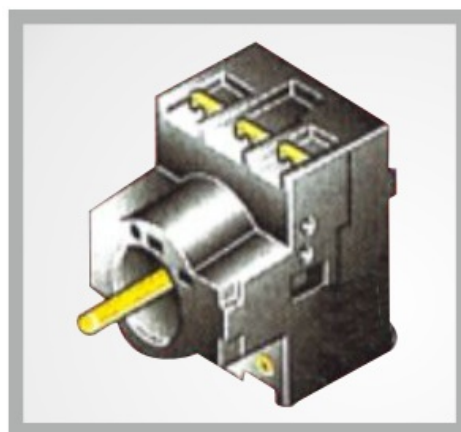
- **Type:** Changeover Switch (CSCSP)
- **Stable Positions:** 3 (0, 1, 2)
- **Type of Installation:**
 - Parallel and level installation
 - Rear / Din Rail installation
 - Surface installation
- **Rated Continuous Current:**
 - 10, 16, 20, 25, 32, 40, 63, 80, 100A

Introduction

Changeover Switch

By means of manual operation, Changeover Switch (CSCSP) performs circuit switching and is mainly used as a switching device of two independent circuits – I & II. It provides three stable positions.

- **Position Operation**
 - 0 Load is open-circuited
 - 1 Load is connected to the normal supply
 - 2 Load is connected to the second source of supply

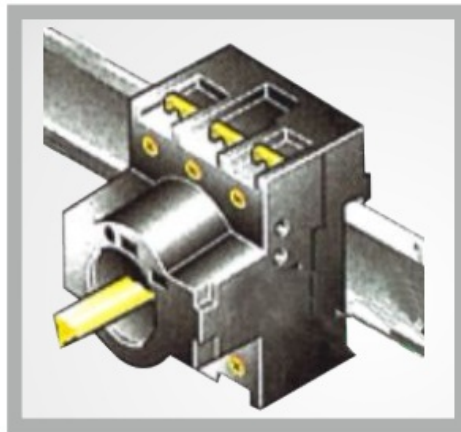


Parallel & Level installation

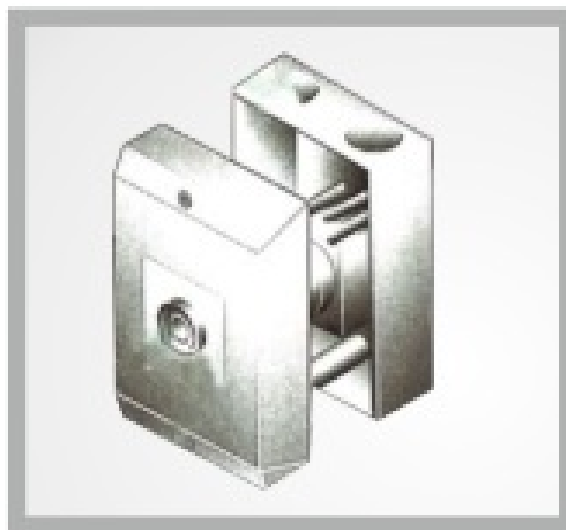
Type of Installation

- Parallel and level installation

- Rear / Din Rail installation
- Surface installation



Rear / Din Rail Installation



Surface Installation



Changeover Switches

Open execution Changeover Switches – CSCSPR 10 ~ 100A (Rear / Din Rail Installation)



10, 16, 20A



25, 32, 40A



63, 80, 100A

| Circuit Diagram | Rated continuous current I _n A | Reference | Pole number of main contact | Rated power of 3 ph. motor 50~60Hz |
|-----------------|---|-----------|-----------------------------|---------------------------------------|
| | | | | KW at 415V (AC23A) |

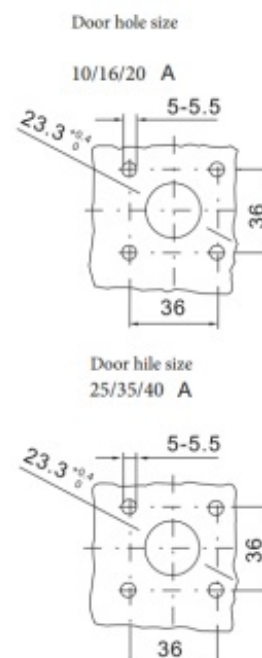
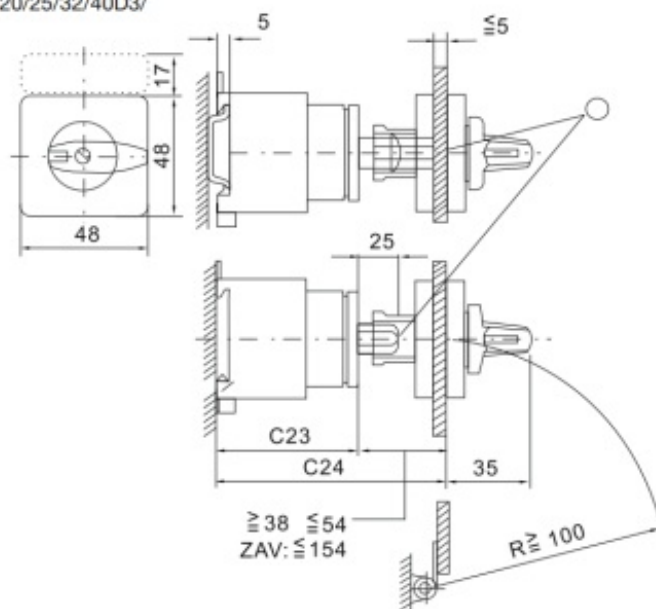
Main switch without auxiliary contact

| | | | | |
|--|-------|---------------|---|------|
| | 10/16 | CSCSPR10/16D4 | 4 | 4.0 |
| | 20 | CSCSPR20D4 | 4 | 5.5 |
| | 25 | CSCSPR25D4 | 4 | 7.5 |
| | 32 | CSCSPR32D4 | 4 | 11.0 |
| | 40 | CSCSPR40D4 | 4 | 15.0 |
| | 63 | CSCSPR63D4 | 4 | 22.0 |
| | 80 | CSCSPR80D4 | 4 | 30.0 |
| | 100 | CSCSPR100D4 | 4 | 37.0 |

Open execution Changeover Switches – CSCSPR 10 ~ 100A (Rear / Din Rail Installation)

CSCSPR10/16/20/25/32/40D3/

CSCSPR10/16/20/25/32/40D3/
D4



Note: All dimensions are in mm.


| Reference | C23 | C24 \geq / \leq | C24 $\leq 4ZAV$ |
|---------------------|-----|----------------------|--------------------|
| CSCSPR10/16/20D3/D4 | 51 | 86-105 | 205 |
| CSCSPR25/32/40D3/D4 | 74 | 112-128 | 228 |

Note: All dimensions are in mm.

FAQ

- **Q: What are the stable positions of the Changeover Switch?**
 - **A:** The Changeover Switch provides three stable positions: O (load open circuited), 1 (load connected to normal supply), and 2 (load connected to the second source of supply).
- **Q: What type of circuits can the Changeover Switch be used for?**
 - **A:** The Changeover Switch is mainly used as a switching device for two independent circuits – I & II.

Documents / Resources

| | |
|---|---|
|  | EPS CSCSPR10-16D4 Changeover Switch [pdf] Instruction Manual CSCSPR10-16D4, CSCSPR20D4, CSCSPR25D4, CSCSPR32D4, CSCSPR40D4, CSCSPR63D4, CSCSPR80D4, CSCSPR100D4, CSCSPR10-16D4 Changeover Switch, CSCSPR10-16D4, Changeover Switch, Switch |
|---|---|

References

- [User Manual](#)

EPS

Changeover Switch, CSCSPR10-16D4, CSCSPR10-16D4 Changeover Switch, CSCSPR100D4, CSCSPR20D4, CSCSPR25D4, CSCSPR32D4, CSCSPR40D4, CSCSPR63D4, CSCSPR80D4, EPS, switch

Leave a comment

Your email address will not be published. Required fields are marked *

Comment *

Name

Email

Website

☐ Save my name, email, and website in this browser for the next time I comment.

Post Comment

Search:

e.g. whirlpool wrf535swhz

Search

[Manuals+](#) | [Upload](#) | [Deep Search](#) | [Privacy Policy](#) | [@manuals.plus](#) | [YouTube](#)

This website is an independent publication and is neither affiliated with nor endorsed by any of the trademark owners. The "Bluetooth®" word mark and logos are registered trademarks owned by Bluetooth SIG, Inc. The "Wi-Fi®" word mark and logos are registered trademarks owned by the Wi-Fi Alliance. Any use of these marks on this website does not imply any affiliation with or endorsement.