



EPOS EXPAND 80 Bluetooth Speakerphone User Guide

[Home](#) » [EPOS](#) » EPOS EXPAND 80 Bluetooth Speakerphone User Guide 

Contents

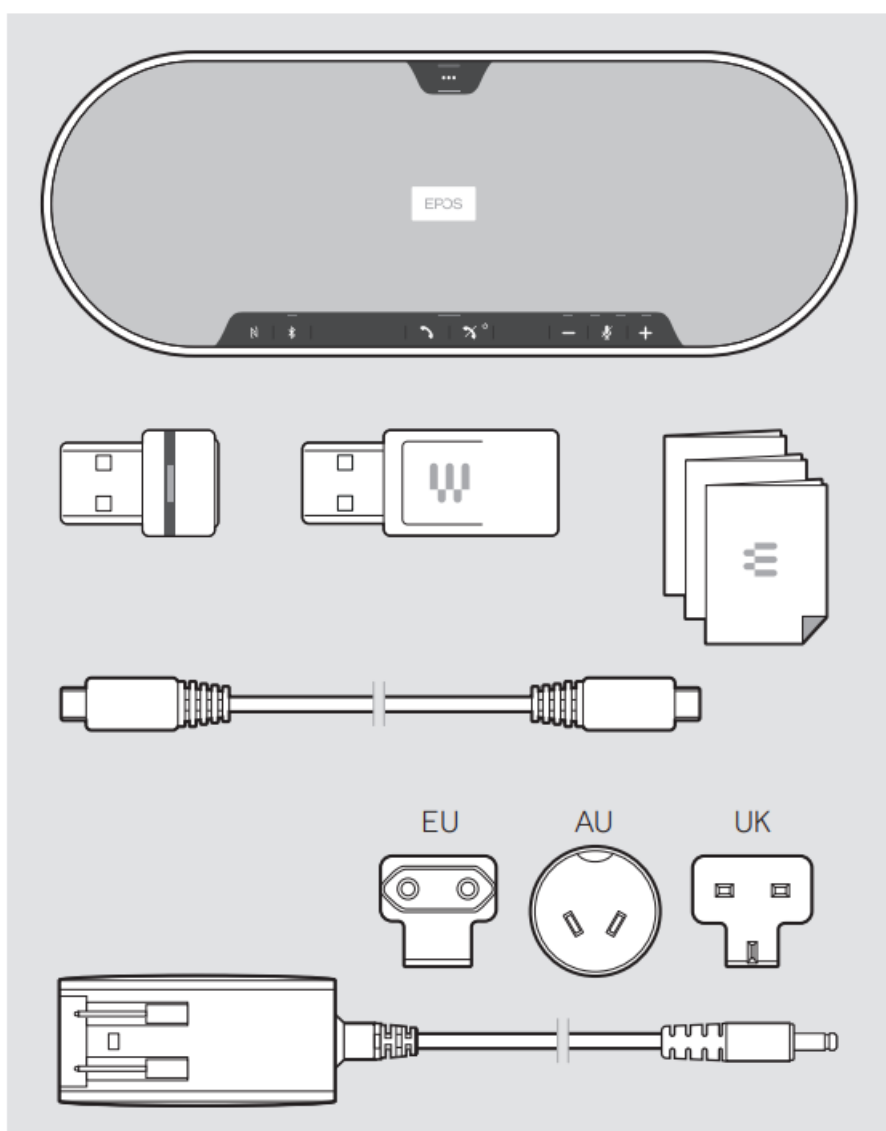
- 1 EPOS EXPAND 80 Bluetooth Speakerphone
- 2 Package contents
- 3 Connecting to the mains
- 4 EPOS Connect
- 5 Connecting via Bluetooth
- 6 Adjusting the volume – A call B music C Voice prompts/tones
- 7 Audio playback
- 8 Using the Voice assistant
- 9 Switching the speakerphone on/of
- 10 Reconnecting/disconnecting Bluetooth
- 11 Documents / Resources
 - 11.1 References
- 12 Related Posts



EPOS EXPAND 80 Bluetooth Speakerphone



Package contents



Connection possibilities

A USB



B NFC™



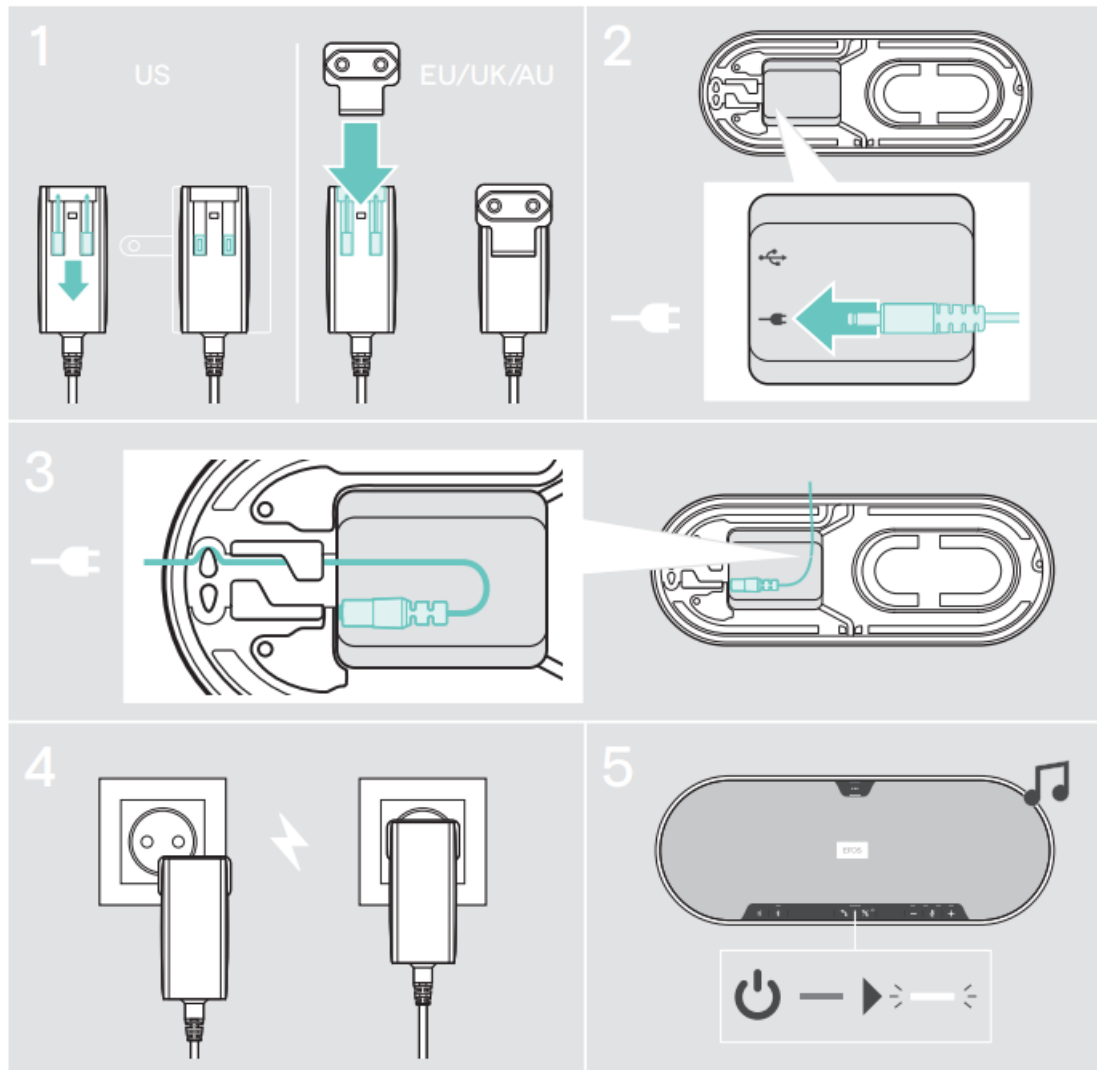
C Bluetooth®



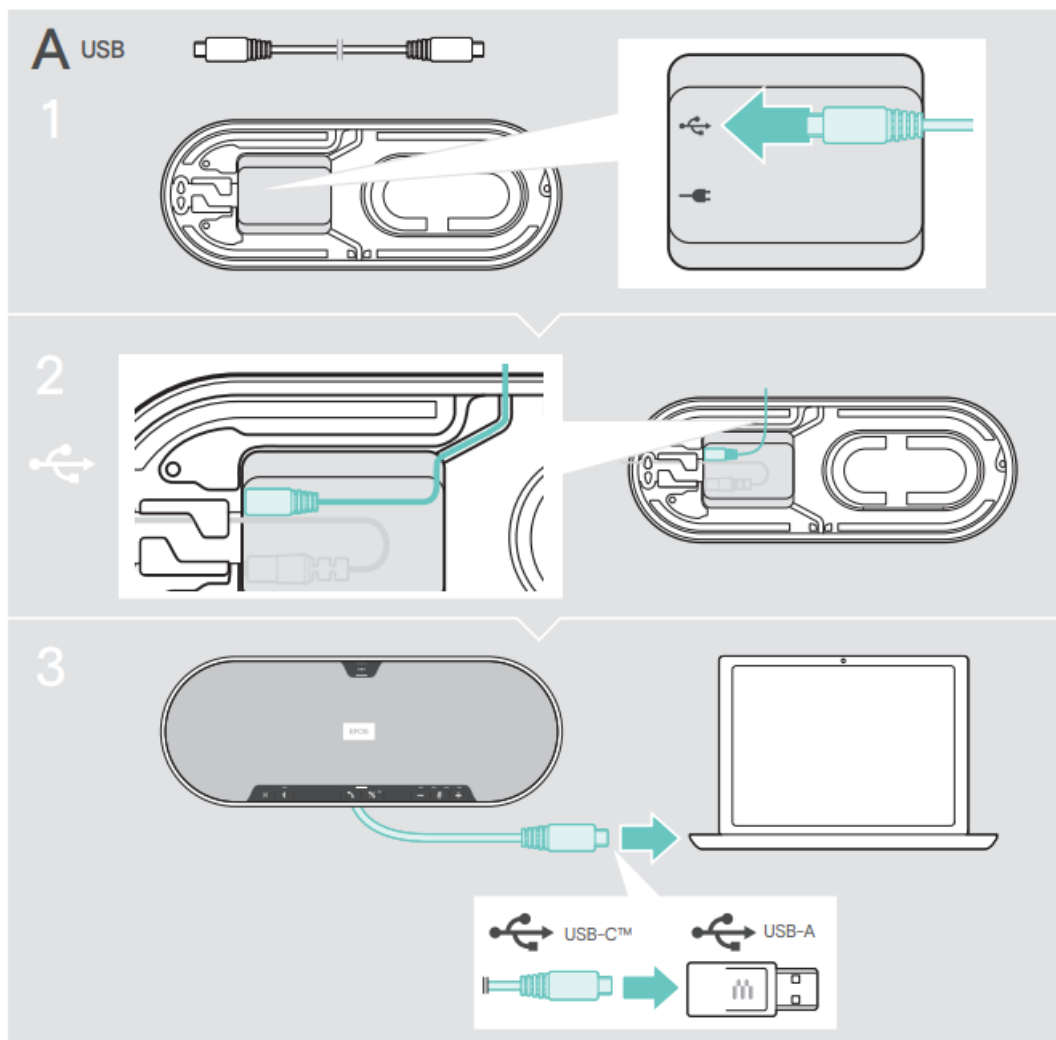
D BT-D 800 USB



Connecting to the mains



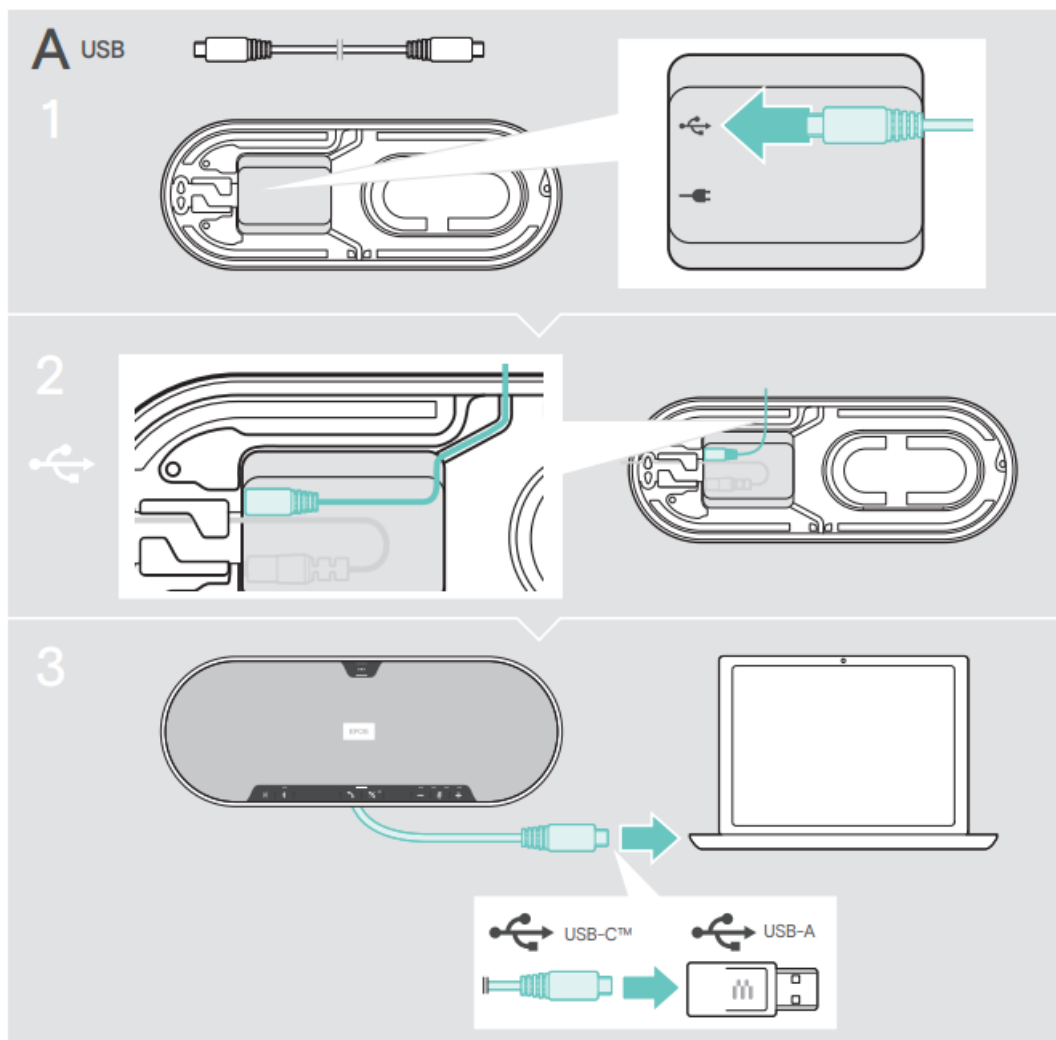
Connecting via USB cable



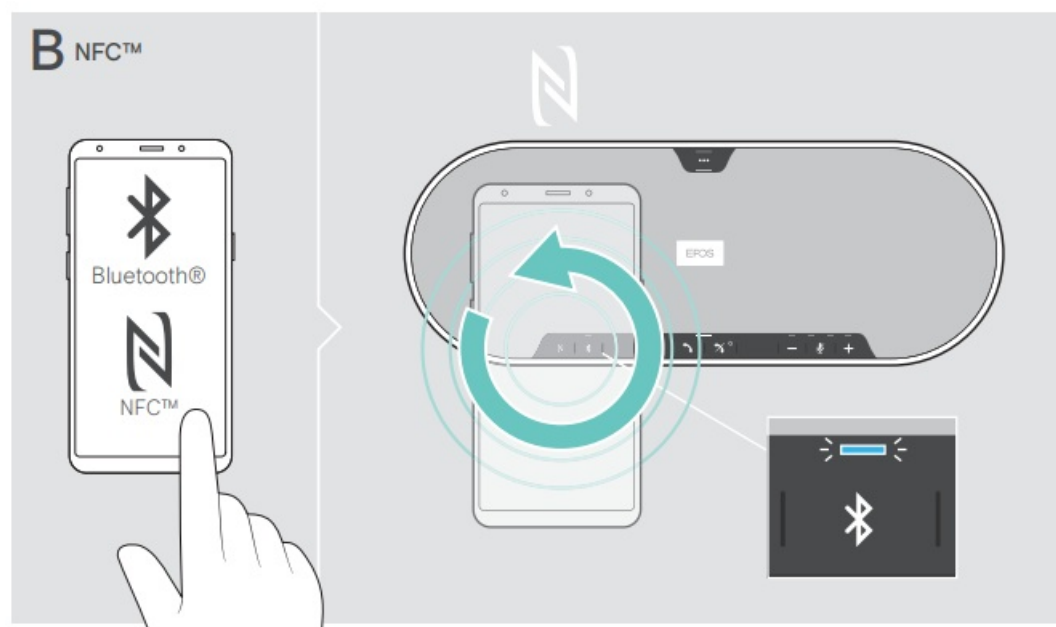
EPOS Connect



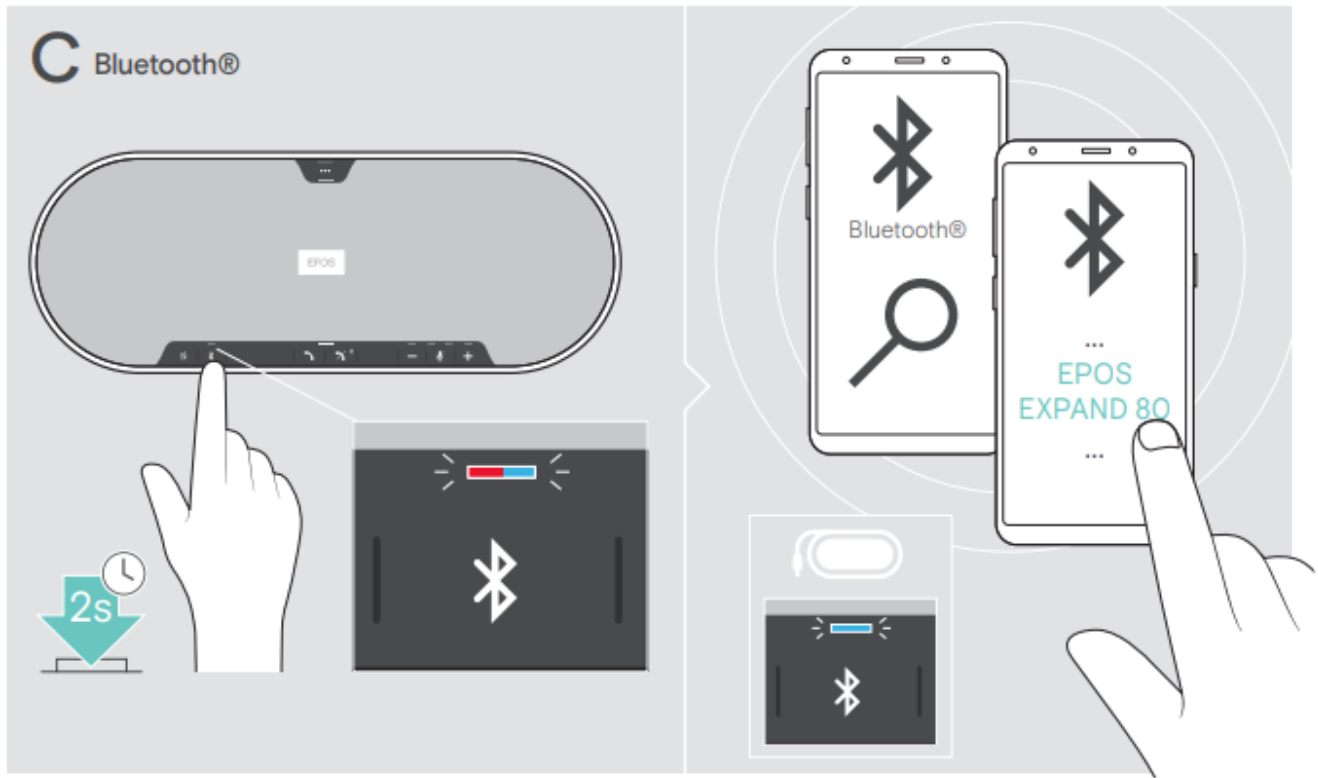
Connecting via USB cable



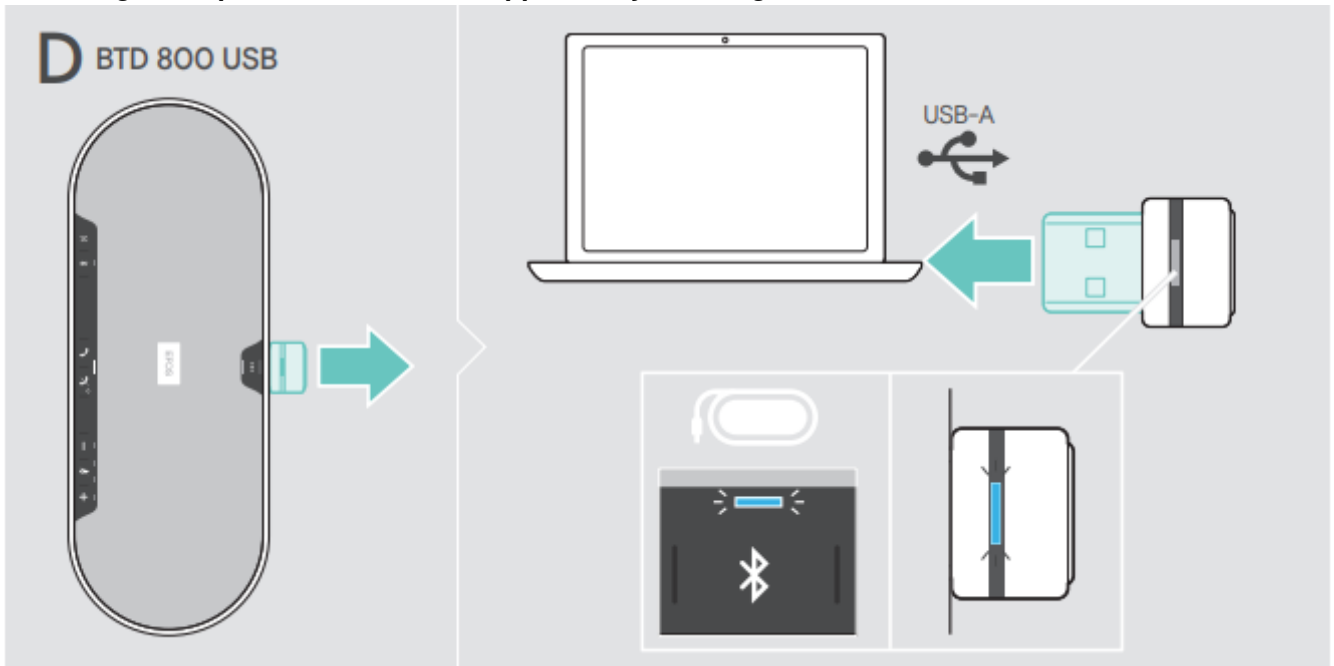
Connecting Bluetooth via NFC



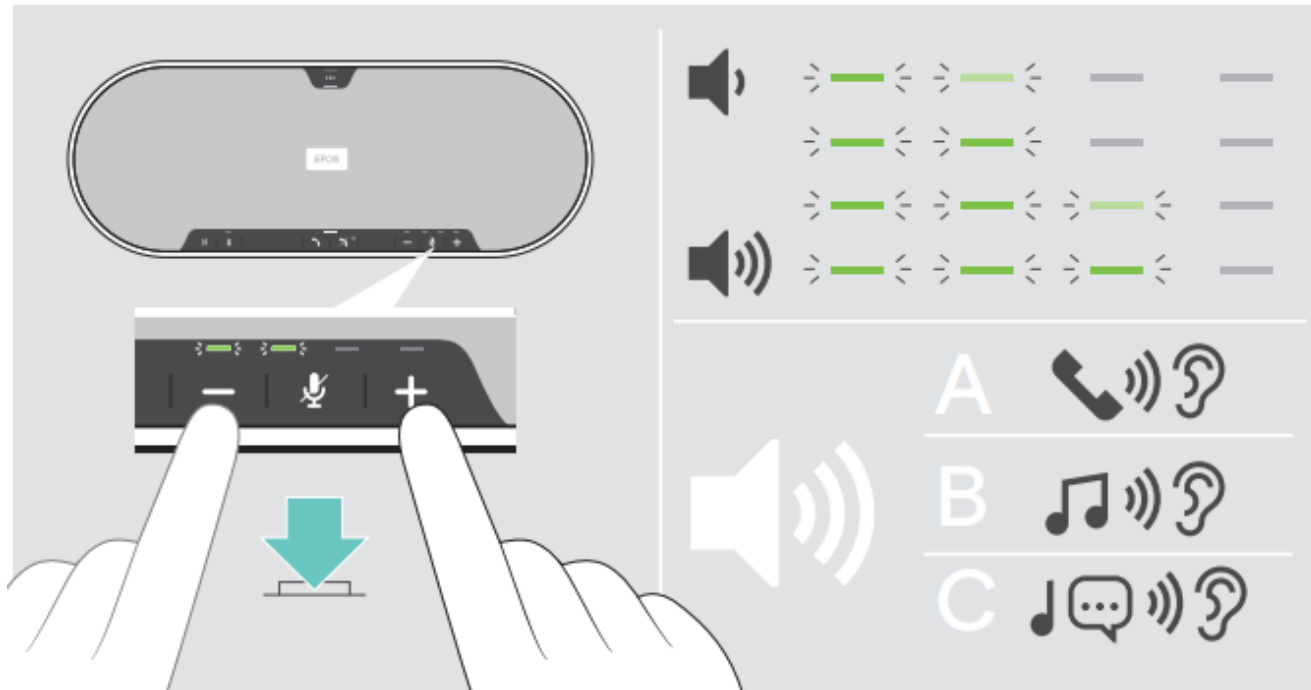
Connecting via Bluetooth



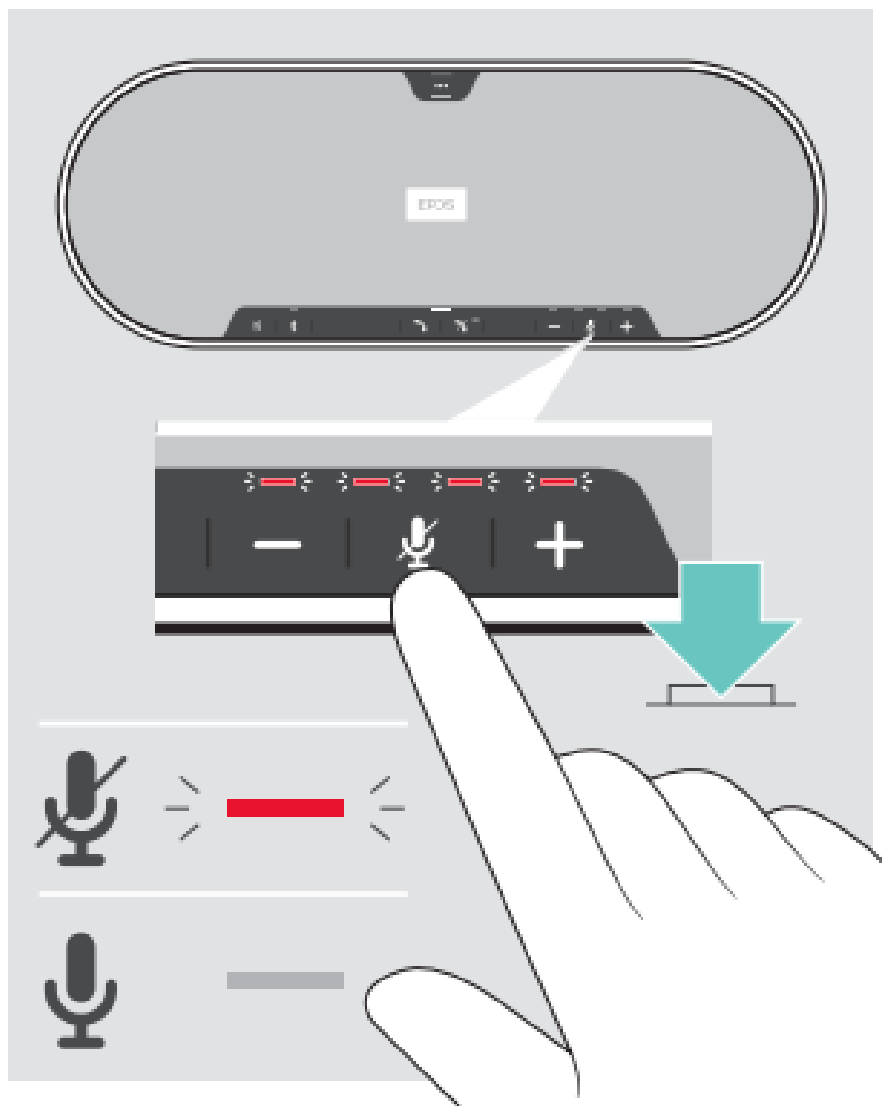
Connecting a computer via Bluetooth supported by the dongle



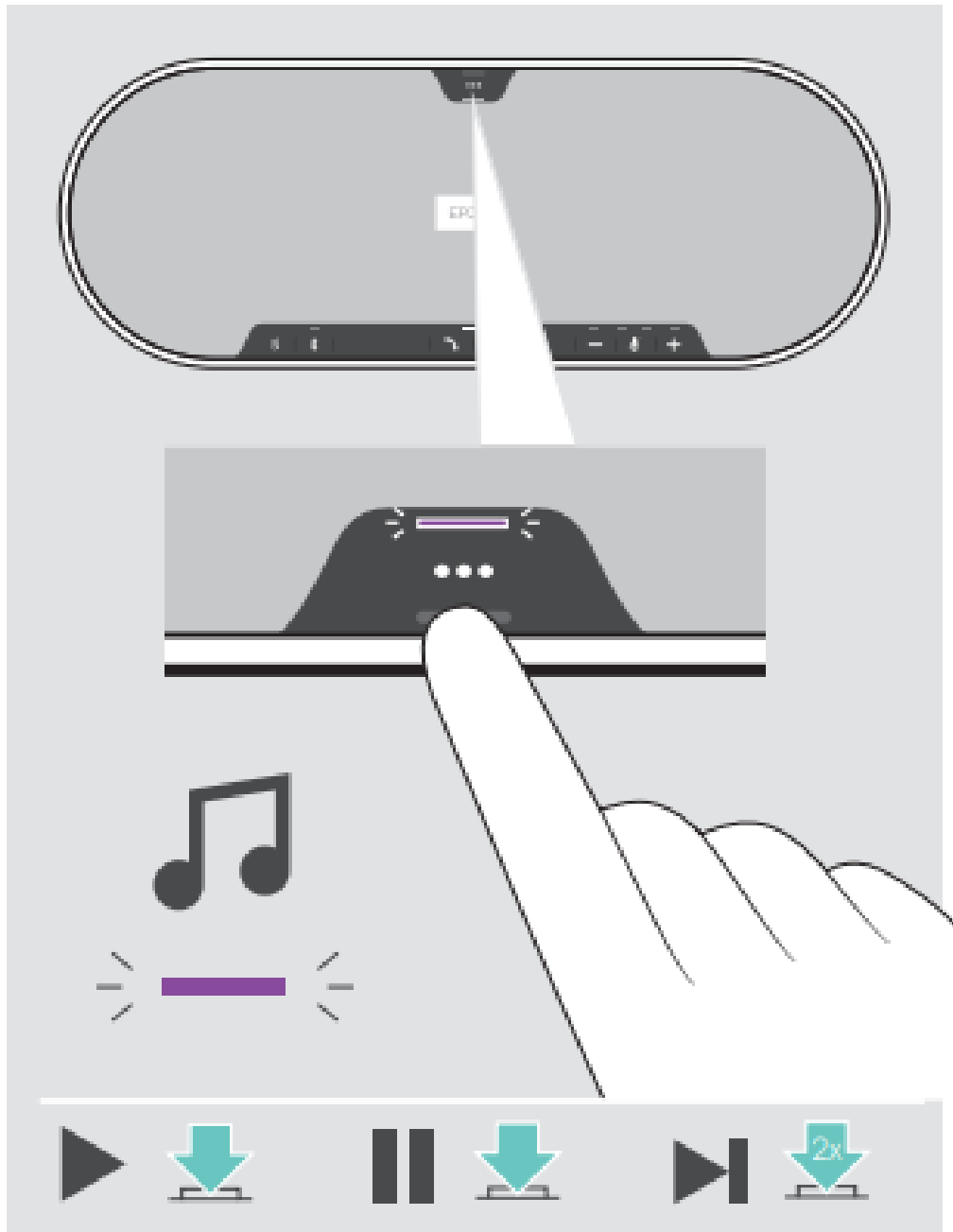
Adjusting the volume – A call B music C Voice prompts/tones



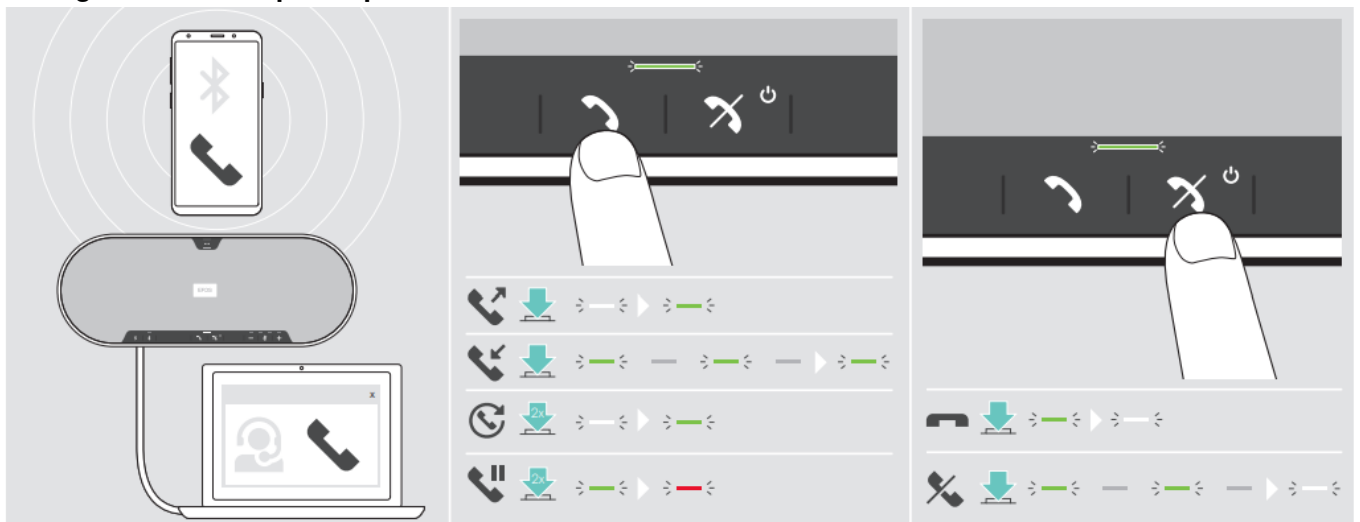
Muting the microphone



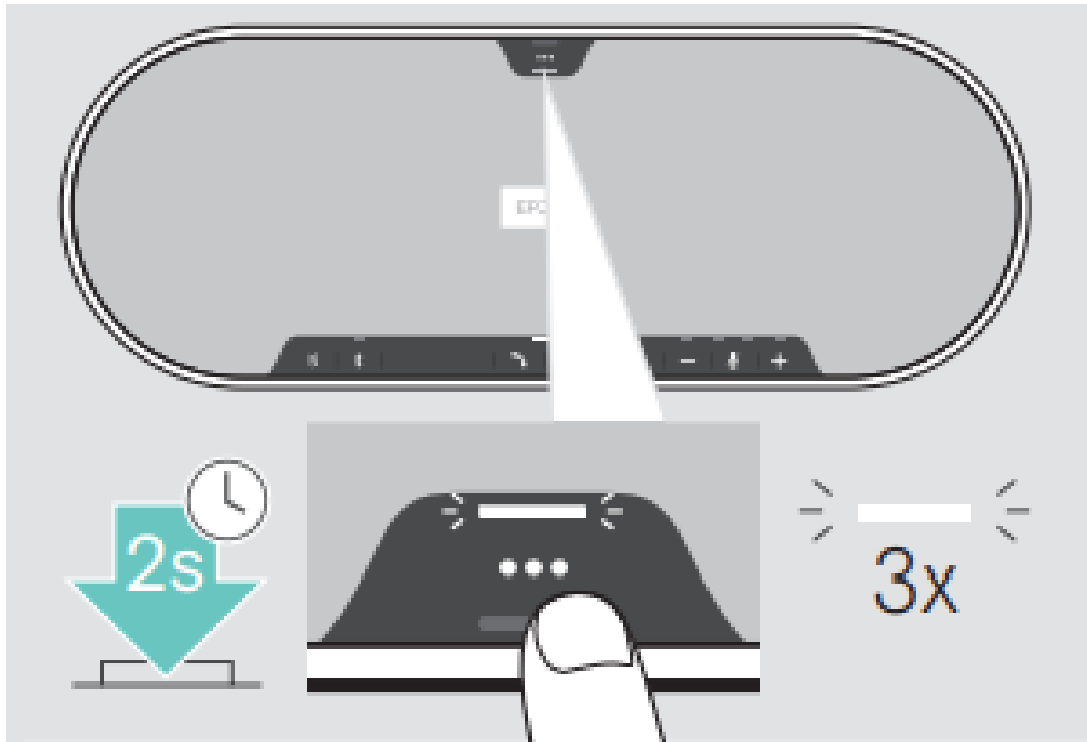
Audio playback



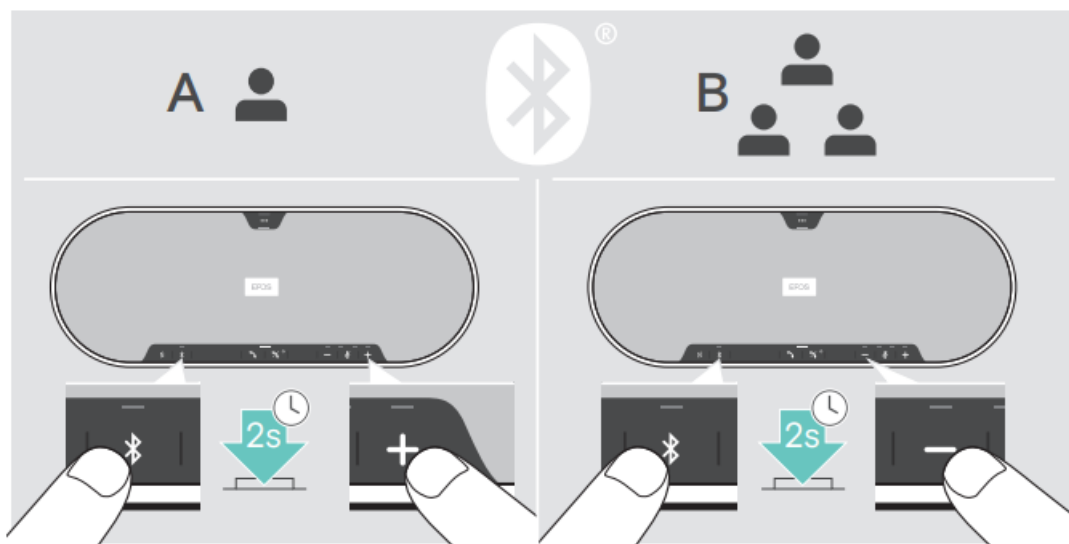
Making calls via the speakerphone



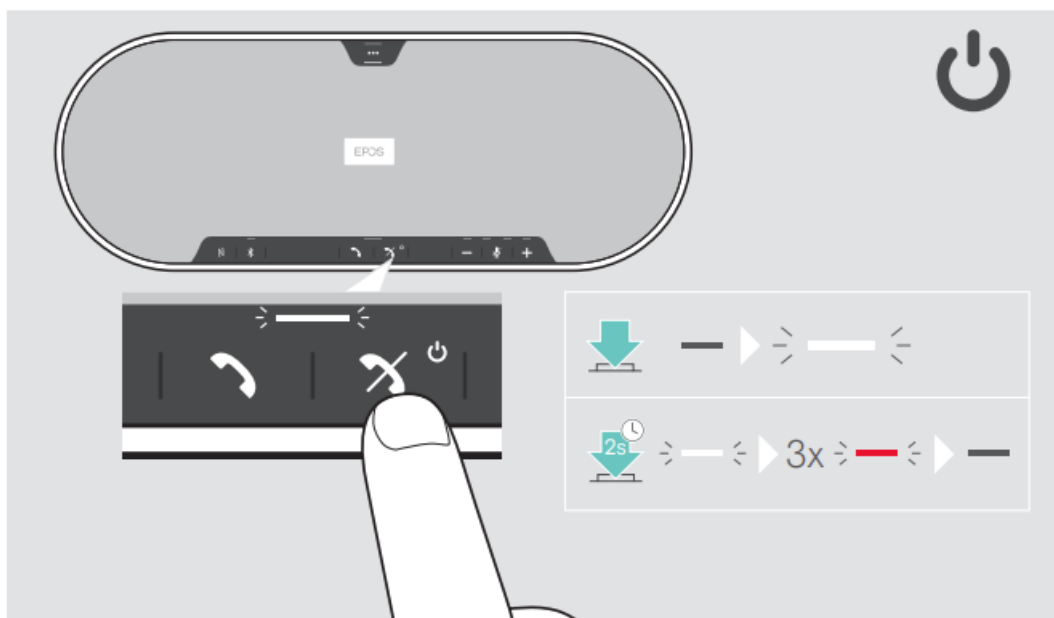
Using the Voice assistant



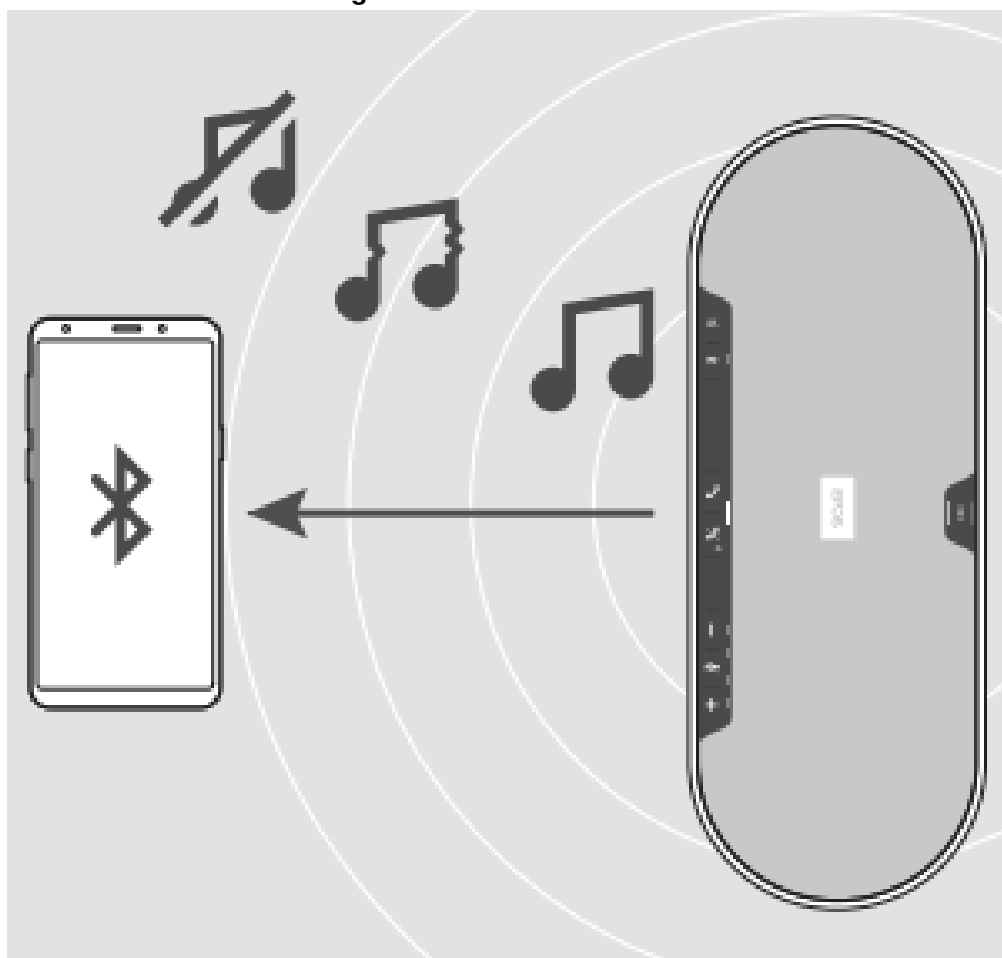
Switching between personal (A) and shared mode (B)



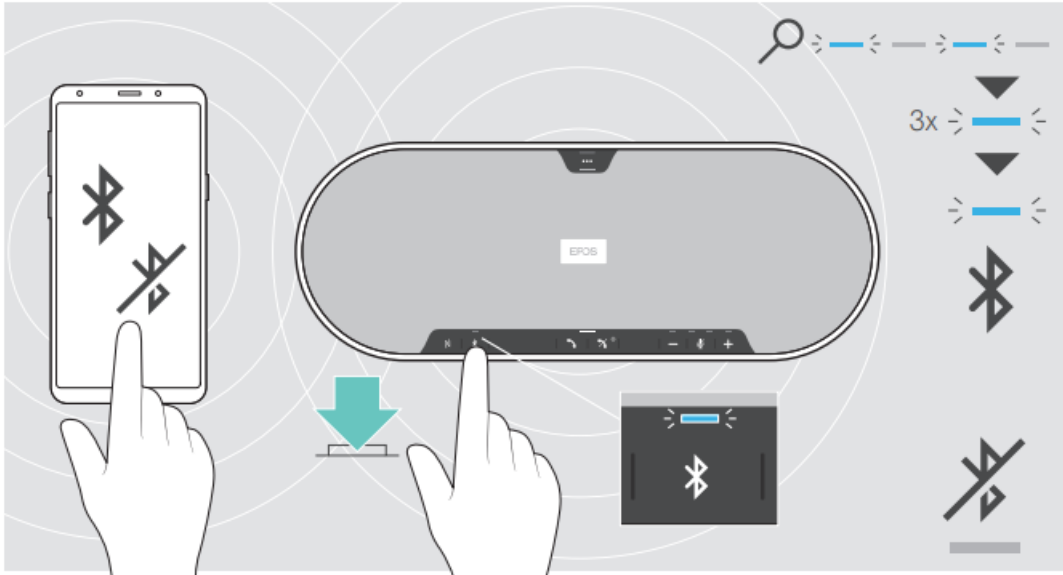
Switching the speakerphone on/of



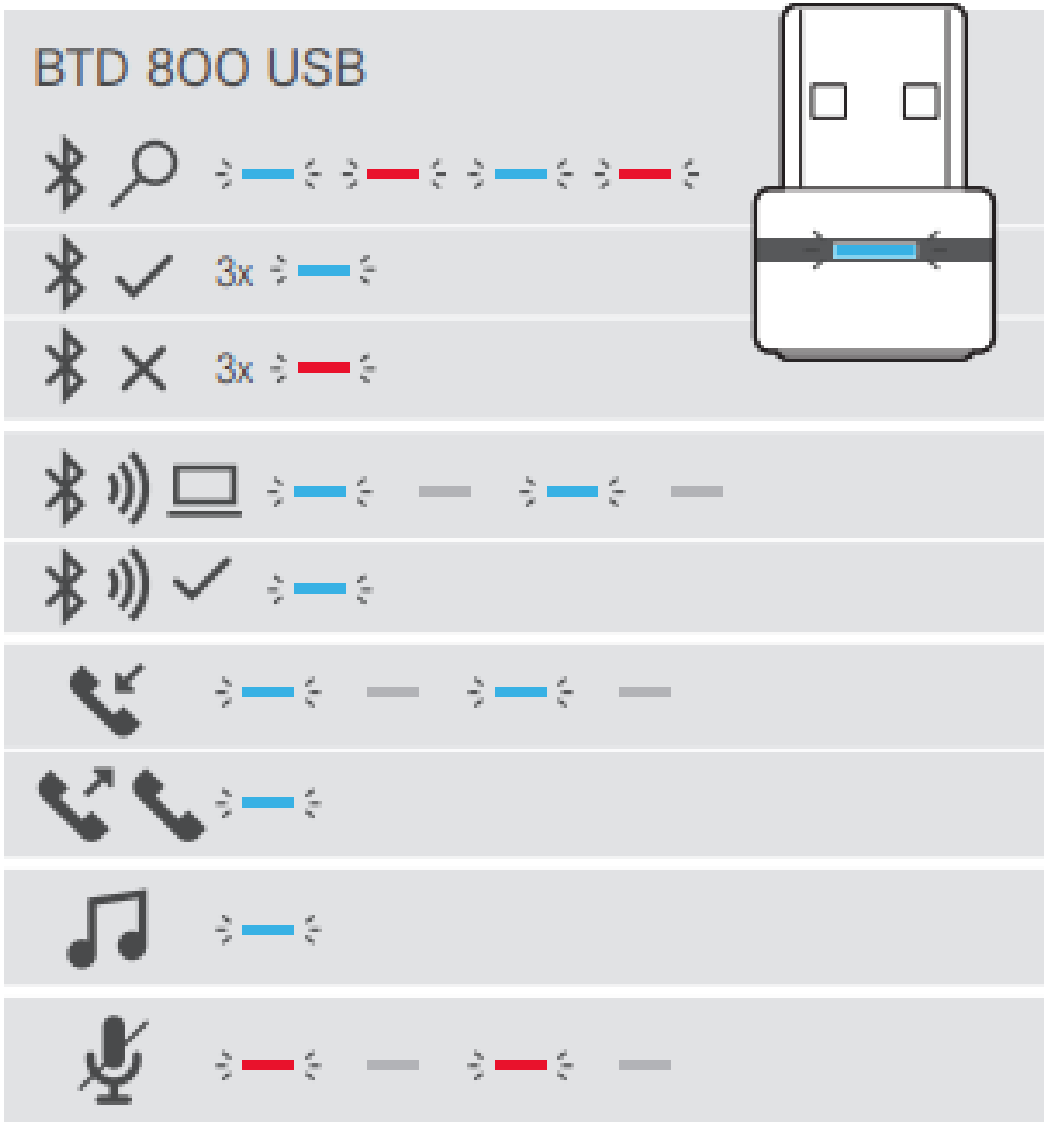
Leaving the Bluetooth transmission range

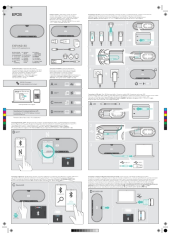
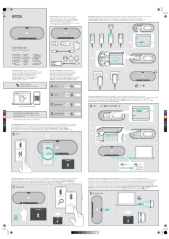


Reconnecting/disconnecting Bluetooth



Overview of the LED indications



	<p>EPOS EXPAND 80 Bluetooth Speakerphone [pdf] User Guide SCBT19, R3USCBT19, EXPAND 80, Bluetooth Speakerphone, EXPAND 80 Bluetooth Speaker phone, Speakerphone</p>
	<p>EPOS Expand 80 Bluetooth Speakerphone [pdf] User Guide SCBT19, R3USCBT19, Expand 80 Bluetooth Speakerphone, Expand 80, Bluetooth Speakerph one</p>

References

- [EPOS delivers high-end audio solutions for enterprise and gaming](#)
- [EPOS | EPOS Connect - Optimize and Personalize](#)
- [EPOS Support](#)