

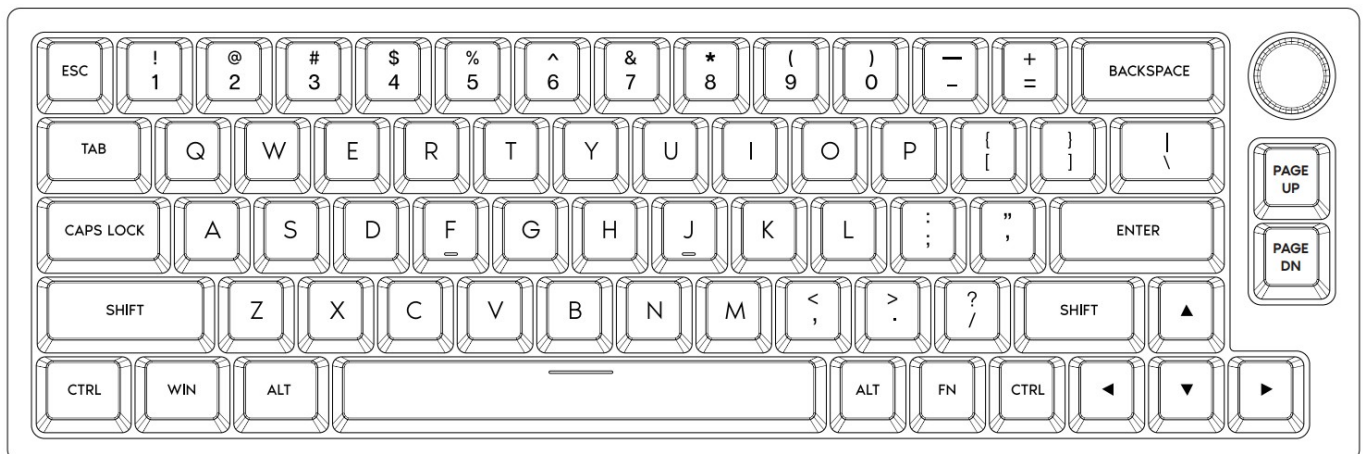


# EPOMAKER TH66 Pro Mechanical Gaming Keyboard User Guide

[Home](#) » [EPOMAKER](#) » EPOMAKER TH66 Pro Mechanical Gaming Keyboard User Guide



**TH66 PRO**  
**ANSI Layout**  
**65% Hot Swappable RGB 2.4Ghz/Bluetooth 5.0/Wired**  
**Mechanical Gaming Keyboard**



Should you require more assistance please email us at [support@epomaker.com](mailto:support@epomaker.com)

## Contents [ [hide](#)

[1 TH66 Pro Mechanical Gaming Keyboard](#)

[2 PAIRING BLUETOOTH](#)

[3 SPECS](#)

[4 TECHNICAL ASSISTANCE](#)

[5 WARRANTY](#)

[6 Documents / Resources](#)

[6.1 References](#)

[7 Related Posts](#)

## TH66 Pro Mechanical Gaming Keyboard

### WINDOWS SHORTCUTS

FN + 1	Screen Brightness –
Fn + 2	Screen Brightness +
Fn + 3	Task
Fn + 4	Explorer
Fn + 5	Mail
Fn + 6	My Computer
Fn + 7	Previous Track
Fn + 8	Play/Pause
Fn + 9	Next Track
Fn + 0	Mute
Fn +	Volume –
Fn + =	Volume +
Fn + J	Insert
Fn + K	Home
Fn + L	End
Fn + PgDn	Delete
Fn + Shift + Esc	~
Fn + U	PrtSc
Fn + I	Scroll Lock
Fn + O	Pause
Fn + Win	Lock/Unlock Win Key

### LIGHT EFFECTS

Fn + Backspace	Turn On/Off Backlights
Fn + \	Toggle RGB Effects
Fn + P	Toggle RGB Colors
Fn + ↓	Backlights Brightness –
Fn + ↑	Backlights Brightness +
Fn + ←	Backlights Speed –
Fn + →	Backlights Speed +

## MACOS SHORTCUTS

FN + 1	Screen Brightness –
Fn + 2	Screen Brightness +
Fn + 3	Task
Fn + 4	Search
Fn + 5	Mail
Fn + 6	Sleep
Fn + 7	Previous Track
Fn + 8	Play/Pause
Fn + 9	Next Track
Fn + 0	Mute
Fn +	Volume –
Fn + =	Volume +
Fn + J	Insert
Fn + K	Home
Fn + L	End
Fn + PgDn	Delete
Fn + Shift + Esc	~

## FUNCTION KEY COMBINATIONS

FN+Esc (Hold 3s)	Reset the Keyboardt
Fn + Q	Short Press to Switch to BT1; Long Press to Pair Devices
Fn + W	Short Press to Switch to BT2; Long Press to Pair Devices
Fn + E	Short Press to Switch to BT3; Long Press to Pair Devices
Fn + R	Short Press to Switch to 2.4G Mode; Long Press to Pair Devices
Fn + T	Wired Mode
FN+ B	Battery Check
Fn+L_Ctrl	Toggle Fn+Nums between Multi-media and F1-F12
Fn+Z/X/C	Switch among the Layers 1/2/3
Fn+Spacebar (Hold)	Check Layer & Mode

## PAIRING BLUETOOTH

Toggle the switch in the back to make sure that the keyboard is under the wireless mode:

1. Hold Fn+Q/W/E for 3-5 seconds till the indicators flashes fast in blue, the keyboard is ready to pair.
2. Turn on your Bluetooth device and find "TH66 BT5.0" or "TH66 BT3.0", then connect. When the keyboard is connected to the Bluetooth device, the light on the Q/W/E key stops flashing and the connection is done.
3. Press Fn+Q/W/E to toggle between the Bluetooth devices 1/2/3.

## PAIRING WIRELESS 2.4GHZ

Toggle the switch in the back to make sure that the keyboard is under the wireless mode:

1. Hold Fn+R for for 3-5 seconds till the light flashes fast in green, the keyboard is ready to pair.
2. Insert the 2.4G dongle to your device, the R key stops flashing green and the connection is done.

## WIRED MODE

Toggle the switch to the wired mode, press Fn+T till the T key lights up in white, and the keyboard enters to the wired mode successfully.

## TOGGLE THE NUMBER ROW BETWEEN MULTI-MEDIA MODE AND F1-F12 KEYS

Press Fn+L\_Ctrl, the combinations from Fn+1 to Fn+= will toggle between Multi-media functions and F1-F12 keys; for example, when Fn+1= Brightness -, it means that the number row is under the Multi-media Mode; if you need to type F1-F12 keys, press Fn+L\_Ctrl, the number row will be changed to F keys mode, and Fn+1 will be F1 under this mode.

## CHECK LAYER AND MODE

Hold Fn+Spacebar, the indicators of Z/X/C and Q/W/E/R/T light up to show at which layer and which mode the keyboard is; for example, if the keys of X and E light up when holding Fn+Spacebar, it means that the keyboard is

in layer 2 and under the wireless mode and connected to BT3 device.

## SPECS

MODEL:	EPOMAKER TH66 Pro
KEYS AMOUNT:	66 Keys
STRUCTURE:	Gasket-like mount
STABILIZER TYPE:	Plate-mounted
PCB TYPE:	3/5-pin Hotswap PCB
BATTERY CAPACITY:	2200mAh
CONNECTIVITY:	Type-C Wired, 2.4 & Bluetooth Wireless
ANTI-GHOST KEY:	NKRO in all modes
POLLING RATE:	1000hz in Type-C Wired & 2.4G modes
COMPATIBILITY:	WINDOWS/MAC
DIMENSION:	323 x 113 x 25 mm
WEIGHT:	Around 0.8kg

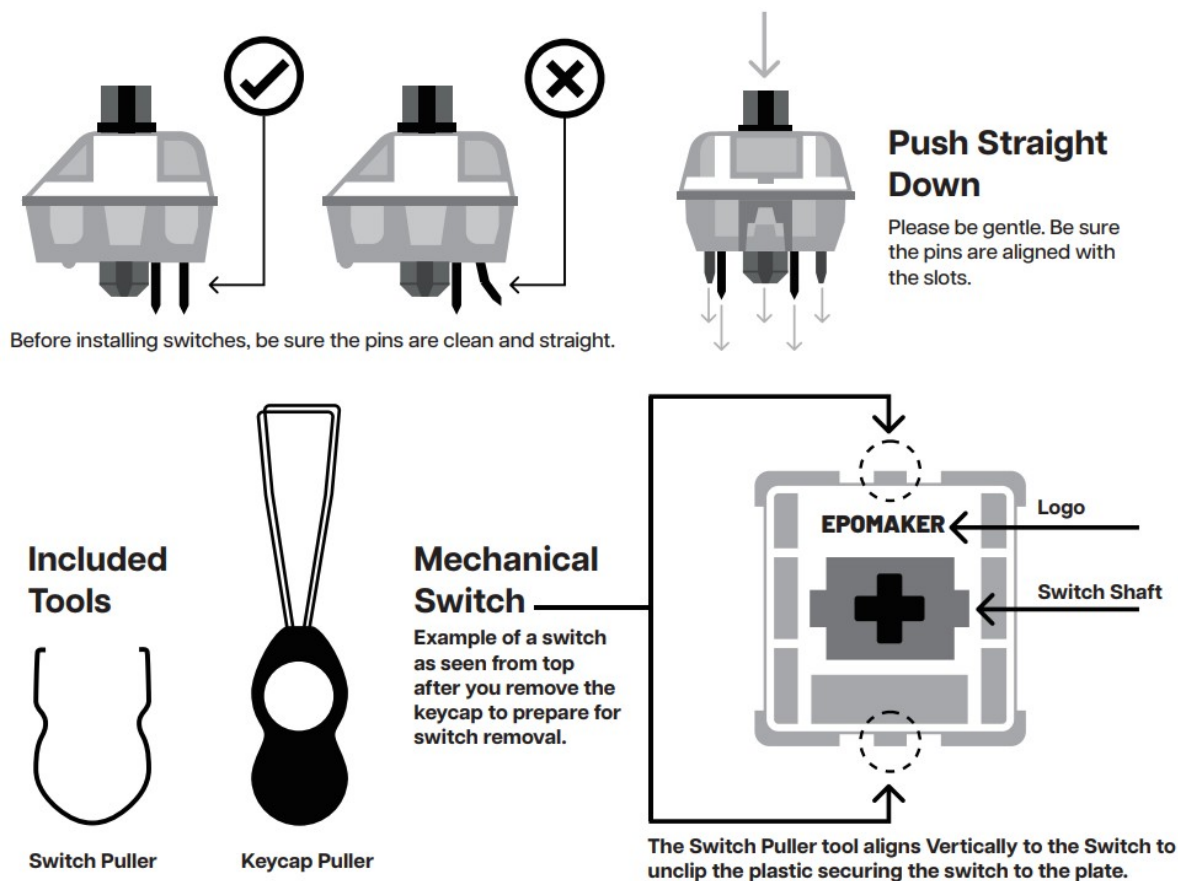
## REPLACING KEY CAPS AND SWITCHES

For a full guide on how to remove keycaps and switches scan the QR Code or type in your browser:

<https://epomaker.com/blogs/guides/diy-guide-how-to-remove-and-replace-your-mechanical-keyboard-switches>



<https://epomaker.com/blogs/guides/diy-guide-how-to-remove-and-replace-your-mechanical-keyboard-switches>



## Remove Switches

1. Grab your Switch Removal Tool and align the gripping teeth vertically (on the Y-Axis) at the center of the switch, as shown in the example graphic above.
2. Grab the switch with the Switch Puller and apply pressure until the switch releases itself from the plate.
3. Using firm but gentle force pull the switch away from the keyboard using a vertical motion.

## Install Switches

1. Check that all the switch metallic pins are perfectly straight and clean.
2. Align the switch vertically to have the Gateron logo facing north. The pins should align themselves to the keyboard PBC.
3. Press the switch down until you hear a click. This means your switch clips have attached themselves to the keyboard plate.
4. Inspect the switch to ensure it's properly attached to your keyboard, and test it.



**Note:** If the key doesn't work its possible you may have bent one of the switches while installing it. Pull the switch out and repeat the process.

Pins may be damaged beyond repair and need replacement if this process is not done correctly. Never apply excessive force when replacing keycaps or switches. If you cannot remove or install keycaps or switches please contact customer service as soon as possible to avoid damage to the keyboard due to operating errors.

## TECHNICAL ASSISTANCE

For technical assistance, please email to [support@epomaker.com](mailto:support@epomaker.com) with your purchase order number and a

detailed description of your issue.

We normally respond to enquiries within 24 hours. If you purchased your keyboard from a distributor or not from any official store of Epomaker, please contact them directly for any additional help.

## COMMUNITY FORUMS

Join our community and learn together with other keyboard enthusiasts.



<https://discord.gg/2q3Z7C2>



<https://www.reddit.com/r/Epomaker/>

## WARRANTY

EPOMAKER's Warranty covers any factory defects that might affect the proper functionality of your purchase. It doesn't cover any damage that may occur from normal wear and tear. If your product is defective we will send you a replacement unit. Replacement units might require you to send the defective unit back to Epomaker.

We provide a 1 year warranty for our products when bought from our website (EPOMAKER.com). Your item will not be covered by your 1 year warranty if the inspection shows any sign of modification or changes unsupported by the original product, these include: Changing internal components, Assembling and reassembling the product, Replacing Batteries, etc.

We will ONLY cover the item if it is bought from our official stores. You do not have a warranty with us if you bought the item from another reseller or likewise. Please contact the store that you bought your product from to resolve issues.



<https://epomaker.com/pages/software-downloads>

## Made in China

Manufacturer: Shenzhen Changyun Technology Co., Ltd.

Address: Seventh Floor, Kai Daer Building, No.168 Tongsha Road,  
Xili Street, Nanshan District, Shenzhen, Guangdong, CN

Email: [support@epomaker.com](mailto:support@epomaker.com)

Web: [www.epomaker.com](http://www.epomaker.com)



**APEX CE SPECIALISTS LIMITED**

Unit 3d North Point House, North Point Business Park,  
New Mallow Road Cork, T23 AT2P, Ireland

Contact: Wells

Tel: +353212066339



**APEX CE SPECIALISTS LIMITED**

89 Princess Street, Manchester, M1 4HT, UK

Contact: Wells

E-mail: [info@apex-ce.com](mailto:info@apex-ce.com)








## Documents / Resources



[EPOMAKER TH66 Pro Mechanical Gaming Keyboard](#) [pdf] User Guide  
TH66 Pro Mechanical Gaming Keyboard, TH66 Pro, Mechanical Gaming Keyboard, Gaming Keyboard, Keyboard

## References

-  [Epomaker – epomaker](#)
-  [Epomaker – epomaker](#)
-  [Epomaker](#)
-  [DIY Guide: How to Replace Your Mechanical Keyboard Switches – epomaker](#)
-  [Reddit - Dive into anything](#)