



EPOMAKER TH100 Triple-Mode Wired-Wireless Mechanical Gaming Keyboard User Guide

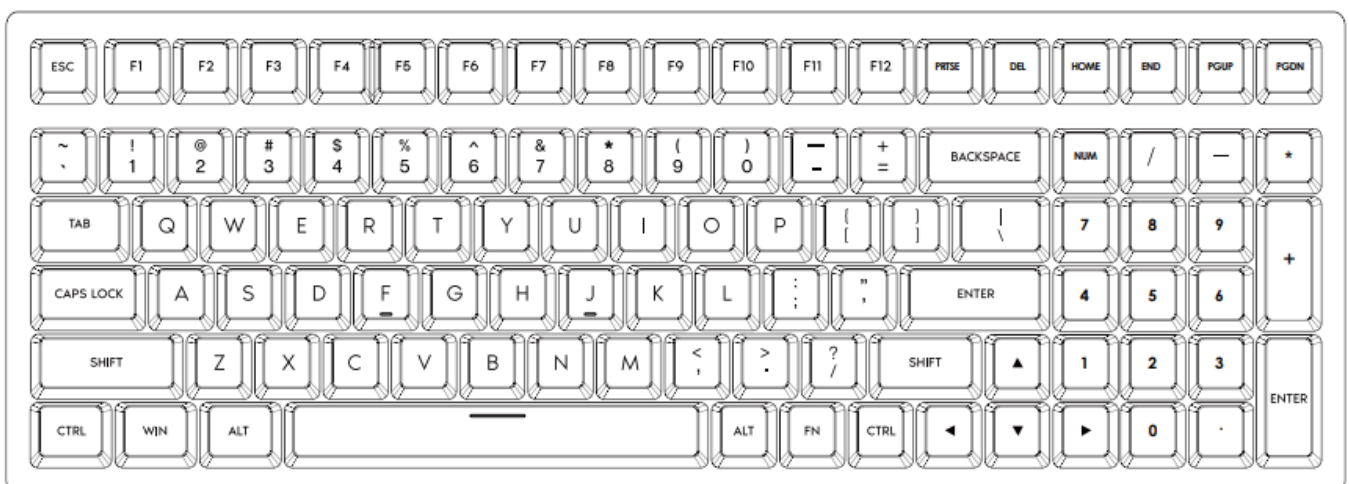
[Home](#) » [EPOMAKER](#) » EPOMAKER TH100 Triple-Mode Wired-Wireless Mechanical Gaming Keyboard User Guide 

Contents

- 1 EPOMAKER TH100 Triple-Mode Wired-Wireless Mechanical Gaming Keyboard
- 2 96% Hot Swappable Triple-Mode Wired/Wireless Mechanical Gaming Keyboard
- 3 CHANGE RGB EFFECTS
- 4 PAIRING BLUETOOTH
- 5 PAIRING WIRELESS 2.4GHz
- 6 REPLACING KEYCAPS AND SWITCHES
- 7 Remove Switches
- 8 Install Switches
- 9 TECHNICAL ASSISTANCE
- 10 WARRANTY
- 11 Documents / Resources
 - 11.1 References
- 12 Related Posts



EPOMAKER TH100 Triple-Mode Wired-Wireless Mechanical Gaming Keyboard



96% Hot Swappable Triple-Mode Wired/Wireless Mechanical Gaming Keyboard

Should you require more assistance please email us at support@epomaker.com

- **MODEL** EPOMAKER TH100
- **SIZE** 374 x 126.7 x 32.96mm
- **NKRO**:Yes
- **SYSTEM**: Windows / Mac
- **CONNECTION**: USB-C, 2.4GHz Bluetooth 3.0, Bluetooth 5.0.
- **WEIGHT**: 1.67kg
- **HOTSWAP**: YES
- **KEYCAPS**: PC
- **LAYOUT** 100Keys

WINDOWS SHORTCUTS		MACOS SHORTCUTS	
FN+F1	Multimedia	F1	Screen Brightness -
FN+F2	Volume -	F2	Screen Brightness +
FN+F3	Volume +	F3	Control Center
FN+F4	Mute	F4	Siri
FN+F5	Stop	F5	
FN+F6	Previous track	F6	
FN+F7	Play/Pause	FN+F8	Previous track
FN+F9	Email	F9	Next track
FN+F10	Home page	F10	Mute
FN+F11	Calculator	F11	Volume -
FN+F12	Search	F12	Volume +
HOT KEY			
FN+TAB	Toggle Win/Mac OS	FN+Esc	Long press 3s to restore the default setting
Fn+PrtSc	Insert	Fn+DEL	Toggle Sidelight Effects
Fn+Home	Scroll	Fn+B	Battery Percentage (Wireless mode)
Fn+P	PAUSE	FN+~	Swap L- CTRL & CAPS
Fn+[Turn on/off Backlights	Fn+WIN	Lock/Unlock Win Key
Fn+]	Toggle Backlight Effects	Fn+1!/2@/3#	Bluetooth Device 1/2/3
Fn+\\ 	Toggle Backlight Colors	FN+4\$	2.4Ghz Mode
Fn+↑	Backlight Brightness +	FN+5%	Wired Mode
Fn+↓	Backlight Brightness -		
Fn+←	Backlight Speed -		
Fn+→	Backlight Speed +		

CHANGE RGB EFFECTS

Pressing Fn+] to switch the RGB effect of your Epomaker TH100 keyboard.

PAIRING BLUETOOTH

1. Press Fn+1!/2@/3# to toggle to the Bluetooth mode, and then hold Fn+1!/2@/3# for 3-5 seconds till the light flashes fast, the keyboard is ready to pair.
2. Turn on your Bluetooth device and find 'K100Max 5.0', then connect. When the keyboard is connected to the Bluetooth device, the 1!/2@/3# key stops flashing and the connection is done.
3. Press Fn+1!/2@/3# to toggle between the Bluetooth devices 1/2/3.

PAIRING WIRELESS 2.4GHz

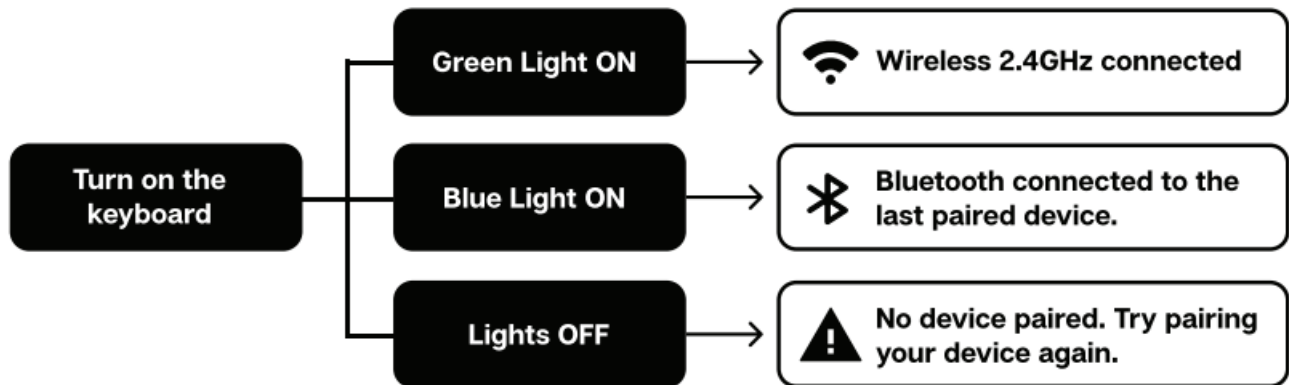
1. Press Fn+4\$ to the 2.4Ghz mode, and then holding Fn+4\$ for for 3-5 seconds till the light flashes fast, the keyboard is ready to pair.
2. Insert the 2.4G dongle to your device, the 4\$ key stops flashing and the connection is done.

WIRED MODE

Press Fn+5% till the key light up, the keyboard enters the wired mode.

KEYBOARD WAKE UPPI

If your keyboard is sleeping press any key to wake it up, it will remember the last device connected.

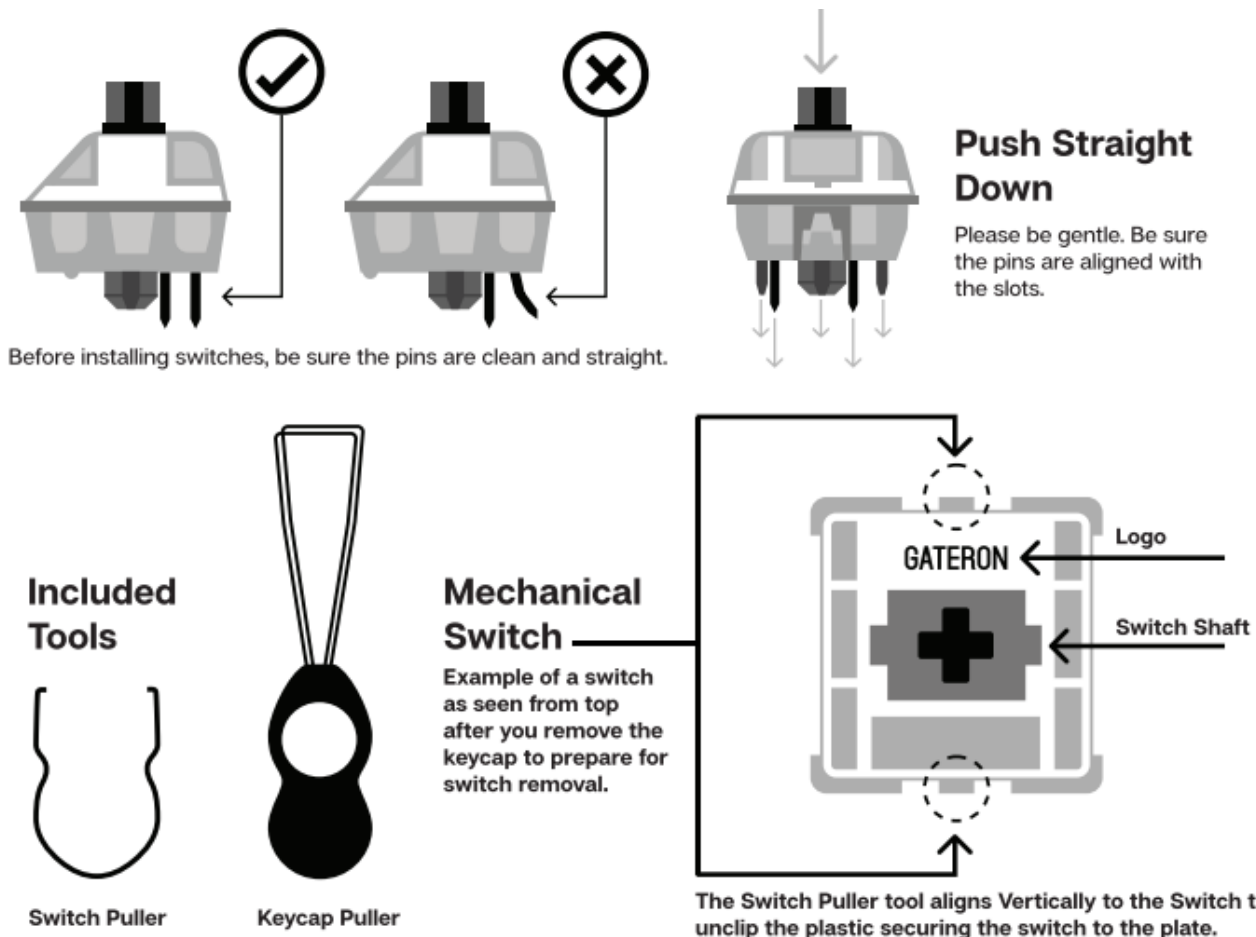


REPLACING KEYCAPS AND SWITCHES



For a full guide on how to remove keycaps and switches scan the QR Code or type in your browser:

<https://epomaker.com/blogs/guides/diy-guide-how-to-remove-and-replace-your-mechanical-keyboard-switches>



Remove Switches

1. Grab your Switch Removal Tool and align the gripping teeth vertically (on the Y-Axis) at the center of the switch, as shown in the example graphic above.
2. Grab the switch with the Switch Puller and apply pressure until the switch releases itself from the plate.
3. Using firm but gentle force pull the switch away from the keyboard using a vertical motion.

Install Switches

1. Check that all the switch metallic pins are perfectly straight and clean.
2. Align the switch vertically to have the Gateron logo facing north. The pins should align themselves to the keyboard PCB.
3. Press the switch down until you hear a click. This means your switch clips have attached themselves to the keyboard plate.
4. Inspect the switch to ensure it's properly attached to your keyboard, and test it.

Note: If the key doesn't work it's possible you may have bent one of the switches while installing it. Pull the switch out and repeat the process. Pins may be damaged beyond repair and need replacement if this process is not done correctly. Never apply excessive force when replacing keycaps or switches if you cannot remove or install keycaps or switches please contact customer service as soon as possible to avoid

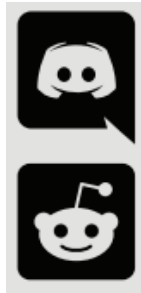
TECHNICAL ASSISTANCE

For technical assistance, please email to support@epomaker.com with your purchase order number and a

detailed description of your issue. We normally respond to enquiries within 24 hours. If you purchased your keyboard from a distributor or not from any official store of Epomaker, please contact them directly for any additional help.

COMMUNITY FORUMS

Join our community and learn together with other keyboard enthusiasts.



- <https://discord.gg/2q3Z7c2>
- <https://www.reddit.com/r/Epomaker/>

WARRANTY

EPOMAKER's Warranty covers any factory defects that might affect the proper functionality of your purchase. It doesn't cover any damage that may occur from normal wear and tear. If your product is defective we will send you a replacement unit. Replacement units might require you to send the defective unit back to Epomaker. We provide a 1 year warranty for our products when bought from our website (EPOMAKER.com). Your item will not be covered by your 1 year warranty if the inspection shows any sign of modification or changes unsupported by the original product, these include: Changing internal components, Assembling and reassembling Batteries, etc. the product, Replacing We will ONLY cover the item if it is bought from our official stores. You do not have a warranty with us if you bought the item from another reseller or likewise. Please contact the store that you bought your product from to resolve issues.



Made in China

Manufacturer: Shenzhen Changyun Technology Co., Ltd.

Address: Seventh Floor, Kai Daer Building, No.168 Tongsha Road, Xili Street, Nanshan District, Shenzhen, Guangdong, CN

Email: support@epomaker.com

Web: www.epomaker.com



APEX CE SPECIALISTS LIMITED

UNIT 3D NORTH POINT HOUSE, NORTH POINT BUSINESS PARK, NEW MALLOW ROAD CORK, T23 AT2P, IRELAND

Contact: Wells


Phone: +353212066339 Email: info@apex-ce.com

APEX CE SPECIALISTS LIMITED

89 PRINCESS STREET, MANCHESTER, M1 4HT, UK Contact: Wells E-mail: info@apex-ce.com



Documents / Resources

	<p>EPOMAKER TH100 Triple-Mode Wired-Wireless Mechanical Gaming Keyboard [pdf] User Guide</p> <p>TH100 Triple-Mode Wired-Wireless Mechanical Gaming Keyboard, TH100, Triple-Mode Wired-Wireless Mechanical Gaming Keyboard, Wired-Wireless Mechanical Gaming Keyboard, Mechanical Gaming Keyboard, Gaming Keyboard, Keyboard</p>
---	---

References

- [ce.com](https://www.apex-ce.com)
- [Reddit - Dive into anything](#)

Manuals+,