



MINI CAT 69
Hot Swap
Wired
Mechanical
Keyboard



EPOMAKER MINI CAT 69 Hot Swap Wired Mechanical Keyboard User Guide

[Home](#) » [EPOMAKER](#) » EPOMAKER MINI CAT 69 Hot Swap Wired Mechanical Keyboard User Guide

Contents

- [1 EPOMAKER MINI CAT 69 Hot Swap Wired Mechanical Keyboard](#)
- [2 SHORTCUTS](#)
- [3 RGB SETTINGS](#)
- [4 FACTORY RESET](#)
- [5 PRODUCT SPECIFICATIONS](#)
- [6 TECHNICAL ASSISTANCE](#)
- [7 WARRANTY](#)
- [8 Frequently Asked Questions](#)
- [9 Documents / Resources](#)
 - [9.1 References](#)



EPOMAKER MINI CAT 69 Hot Swap Wired Mechanical Keyboard



70% Hot-Swap Wired Mechanical Keyboard Kit

This Quick Guide is an introduction to the use and functionality of the EPOMAKER Mini Cat69. For an in-depth guide of the functionality of the customization software please refer to the manual that you can find in the official epomaker website at <https://epomaker.com/pages/software-downloads> Should you require more assistance please email us at support@epomaker.com

Made in China

- Manufacturer: Shenzhen Changyun Technology Co., Ltd.
- Address: Seventh Floor, Kai Daer Building, No.168 Tongsha Road,
- Xili Street, Nanshan District, Shenzhen, Guangdong, CN
- Email: support@epomaker.com
- Web: www.epomaker.com

EC/REP

- APEX CE SPECIALISTS LIMITED
- Address: UNIT 3D NORTH POINT HOUSE, NORTH POINT BUSINESS
- PARK, NEW MALLOW ROAD CORK, T23 AT2P, IRELAND
- Contact: Wells
- Tel: +353212066339
- Email: info@apex-ce.com

SHORTCUTS

FN + 1	F1
FN + 2	F2
FN + 3	F3
FN + 4	F4
FN + 5	F5
FN + 6	F6
FN + 7	F7
FN + 8	F8
FN + 9	F9
FN + 0	F10
FN + -	F11
FN + =	F12
FN + ;	Lock Win
FN + BACKSPACE	Del

RGB SETTINGS

FN + A	Turn on Keys' Backlights Only / Turn on Case's Backlights Only / Turn on All Backlights
FN + S	Hue +
FN + D	Hue -
FN + F	Saturation +
FN + G	Saturation -
FN + Z	Turn On/Off Backlights
FN + X	Mod +
FN + C	Mod -
FN + V	Brightness +
FN + B	Brightness -

FACTORY RESET

1. Unplug the cable of the keyboard.
2. Press the ESC and hold it.
3. Plug in the cable to connect the computer and keyboard, do NOT release the ESC key until the cable is plugged into both the computer and the keyboard.
4. Release the ESC key
5. Wait until the computer completes the setup for USB, now the keyboard won't respond to the key pressing, and a window of USB folder might pop up on the screen.
6. Eject the USB from the computer.
7. Re-plug the cable to connect the keyboard to the computer.
8. Wait a few seconds until the backlights are on.

To be able to customize your key layouts, RGB, macros, and other functions in your Mini Cat 69 you can use the VIA Software with the use of a JSON File.

Download the Software at: <https://epomaker.com/products/epomaker-mini-cat-69>



Instructions to install on Windows:

1. Unzip the file to find the .exe and .json files.
2. Install the .exe file in your computer.
3. Run the VIA software once installed.
4. Import the JSON file to be able to edit the Mini Cat 69 settings inside VIA



Instructions to install on macOS:

1. Unzip the file to find the .exe and json files.
2. Unpack the .dmg file
3. Drag the VIA software to your applications folder to install it.
4. Authorize the VIA software in: System Preferences > Security & Privacy.
5. Import the JSON file to be able to edit the Mini Cat 69 settings inside VIA.

PRODUCT SPECIFICATIONS

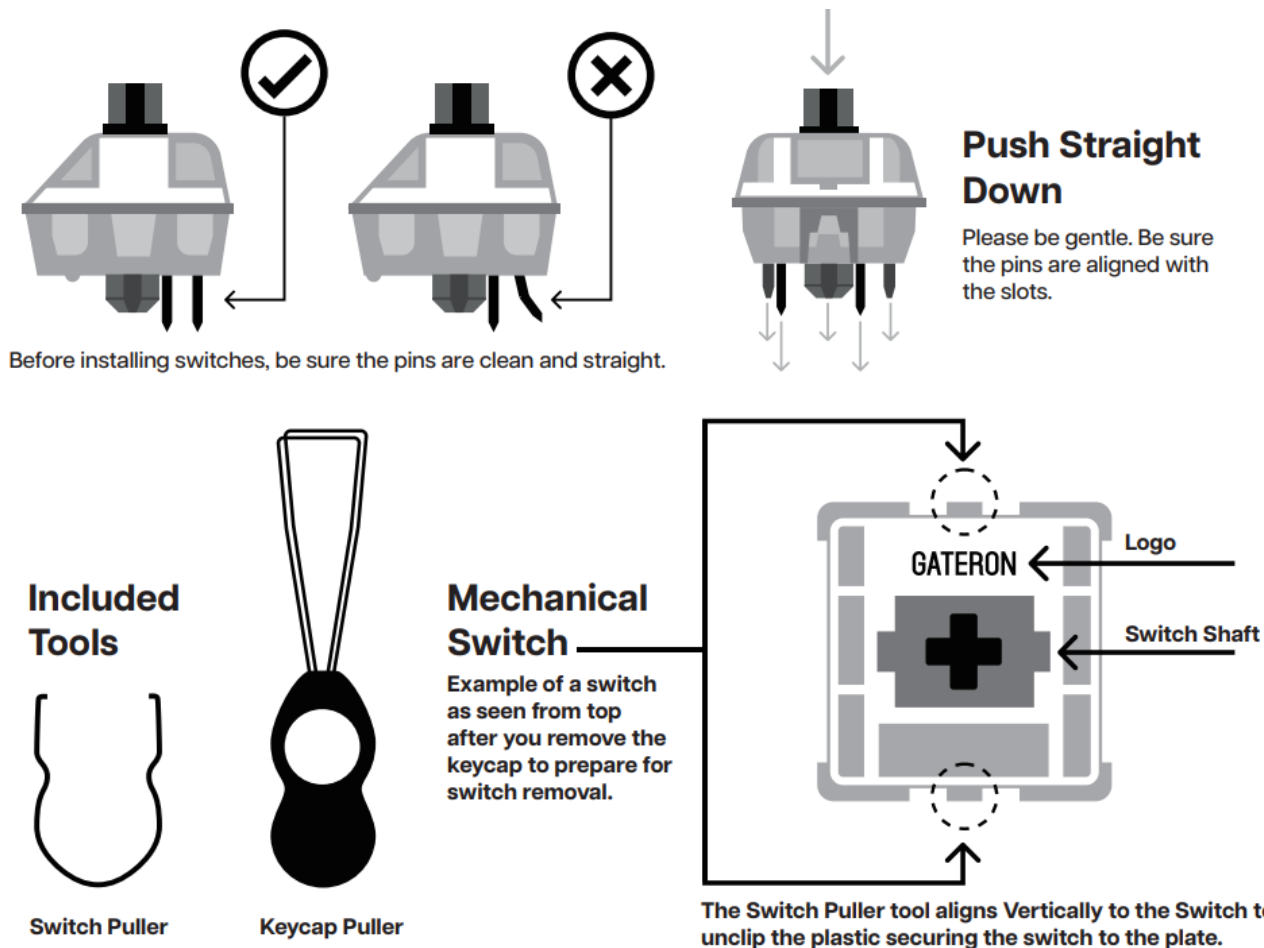
- NUMBER OF KEYS 71 KEYS
- CASE MATERIAL STACKED ACRYLIC
- HOT-SWAP SUPPORTS 3/5 PIN SWITCHES
- BACKLIGHT RGB
- CONNECTION USB-C
- COMPATIBILITY WINDOWS/MAC
- PRODUCT WEIGHT 550G±50G
- PRODUCT DIMENSIONS 325 * 175 (Max.) – 125(Min.) * 30mm (±20mm)

REPLACING KEY CAPS AND SWITCHES

For a full guide on how to remove keycaps and switches scan the QR Code or type in your browser:

<https://epomaker.com/blogs/guides/diy-guide-how-to-remove-and-replace-your-mechanical-keyboard-switches>





Remove Switches

1. Grab your Switch Removal Tool and align the gripping teeth vertically (on the Y-Axis) at the center of the switch, as shown in the example graphic above.
2. Grab the switch with the Switch Puller and apply pressure until the switch releases itself from the plate.
3. Using firm but gentle force pull the switch away from the keyboard using a vertical motion.

Install Switches

1. Check that all the switch metallic pins are perfectly straight and clean.
2. Align the switch vertically to have the Gateron logo facing north. The pins should align themselves to the keyboard PCB.
3. Press the switch down until you hear a click. This means your switch clips have attached themselves to the keyboard plate.
4. Inspect the switch to ensure it's properly attached to your keyboard, and test it.

Note: If the key doesn't work it's possible you may have bent one of the switches while installing it. Pull the switch out and repeat the process.

Pins may be damaged beyond repair and need replacement if this process is not done correctly. Never apply excessive force when replacing keycaps or switches. If you cannot remove or install keycaps or switches please contact customer service as soon as possible to avoid damage to the keyboard due to operating errors.

TECHNICAL ASSISTANCE

For technical assistance, please email to support@epomaker.com with your purchase order number and a detailed description of your issue. We normally respond to enquiries within 24 hours. If you purchased your keyboard from a distributor or not from any official store of Epomaker, please contact them directly for any additional help.

COMMUNITY FORUMS

Join our community and learn together with other keyboard enthusiasts.

- <https://discord.gg/2q3Z7C2>
- <https://www.reddit.com/r/Epomaker/>


WARRANTY

EPOMAKER's Warranty covers any factory defects that might affect the proper functionality of your purchase. It doesn't cover any damage that may occur from normal wear and tear. If your product is defective we will send you a replacement unit. Replacement units might require you to send the defective unit back to Epomaker. We provide a 1 year warranty for our products when bought from our website (EPOMAKER.com). Your item will not be covered by your 1 year warranty if the inspection shows any sign of modification or changes unsupported by the original product, these include: Changing internal components, Assembling and reassembling the product, Replacing Batteries, etc. We will ONLY cover the item if it is bought from our official stores. You do not have a warranty with us if you bought the item from another reseller or likewise. Please contact the store that you bought your product from to resolve issues.

Frequently Asked Questions



- **Q: Where can I find detailed customization options for the Mini Cat69?**
 - A: For detailed customization options, please refer to the manual available on the official Epomaker website at <https://epomaker.com/pages/software-downloads> or contact support@epomaker.com for assistance.
- **Q: What should I do if my keyboard is not responding?**
 - A: Follow the factory reset instructions provided in the manual. If the issue persists, reach out to support@epomaker.com for further assistance.
- **Q: How can I get software updates for Mini Cat69?**
 - A: To get software updates, visit <https://epomaker.com/products/epomaker-mini-cat-69> and download the latest version available.

Documents / Resources

	EPOMAKER MINI CAT 69 Hot Swap Wired Mechanical Keyboard [pdf] User Guide MINI CAT 69 Hot Swap Wired Mechanical Keyboard, MINI CAT 69, Hot Swap Wired Mechanical Keyboard, Swap Wired Mechanical Keyboard, Wired Mechanical Keyboard, Mechanical Keyboard, Keyboard
---	--

References

- [ce.com](https://www.epomaker.com)
- [Discord](https://discord.gg/2q3Z7C2)

-  [Epomaker – epomaker](#)
-  [One moment, please...](#)
- [User Manual](#)

[Manuals+](#), [Privacy Policy](#)

This website is an independent publication and is neither affiliated with nor endorsed by any of the trademark owners. The "Bluetooth®" word mark and logos are registered trademarks owned by Bluetooth SIG, Inc. The "Wi-Fi®" word mark and logos are registered trademarks owned by the Wi-Fi Alliance. Any use of these marks on this website does not imply any affiliation with or endorsement.