

EPOMAKER
TH80 PRO V2
Mechanical
Gaming
Keyboard



Epomaker TH80 PRO V2 Mechanical Gaming Keyboard User Manual

[Home](#) » [EPOMAKER](#) » Epomaker TH80 PRO V2 Mechanical Gaming Keyboard User Manual 

Contents

- [1 Epomaker TH80 PRO V2 Mechanical Gaming Keyboard User Manual](#)
- [2 FUNCTION KEY COMBINATIONS](#)
- [3 SPECS](#)
- [4 Included Tools](#)
- [5 WARRANTY](#)
- [6 References](#)



Epomaker TH80 PRO V2 Mechanical Gaming Keyboard User Manual



WINDOWS (PRESS FN+A)

FN + F1	Open Player
FN + F2	Volume -
FN + F3	Volume +
FN + F4	Mute
FN + F5	Stop
FN + F6	Previous Track
FN + F7	Play/Pause
FN + F8	Next Track
FN + F9	Mail
FN + F10	Homepage
FN + F11	Calculator
FN + F12	Search
FN + PGUP	Home
FN + PGDN	End
FN + DEL	Insert
FN+WIN	Lock/Unlock Win Key

MAC (PRESS FN+S)

F1	Screen Brightness -
F2	Screen Brightness +
F3	Task
F4	
F5	
F6	
F7	Previous Track
F8	Play/Pause
F9	Next Track
F10	Mute
F11	Volume -
F12	Volume +
FN + PGUP	Home
FN + PGDN	End

LIGHT EFFECTS

FN + BACKSPACE	Turn On/Off Backlights	FN + =+	Backlights Speed +
FN + \ 	Toggle Backlight RGB Effects	FN + ←	Backlights Hue -
FN + ↓	Backlights Brightness -	FN + →	Backlights Hue +
FN + ↑	Backlights Brightness +	FN + [{	Backlights Sat +
FN + -_	Backlights Speed -	FN +]}	Backlights Sat -

FUNCTION KEY COMBINATIONS

FN+SPACEBAR (Hold 3s)	Reset the Keyboard	FN + Q	Long Press to Pair Device BT1
FN + ENTER	Toggle Screen Display	FN + W	Long Press to Pair Device BT2
FN + X	Turn on/off Screen Display	FN + E	Long Press to Pair Device BT3
FN + A	Win Mode	FN + S	Mac Mode

PAIRING BLUETOOTH

Toggle the switch to the left, and make sure that the keyboard is under Bluetooth mode:

1. Hold Fn+Q/W/E for 3-5 seconds till the BT sign on the screen flashes fast, the the keyboard is ready to pair.
2. Turn on your Bluetooth device and find "TH80 Pro V2-1/2/3", then connect. When the keyboard is connected to the Bluetooth device, the indicator stops flashing and the connection is done.
3. Press Fn+Q/W/E to toggle between the Bluetooth devices 1/2/3.

PAIRING WIRELESS 2.4GHZ

Toggle the switch to the right, and make sure that the keyboard is under the 2.4G mode:

- Insert the 2.4G dongle into your device.
- When the display shows that the keyboard is under 2.4G mode and the connection is done.

WIRED MODE

Toggle the switch in the middle and plug the keyboard.

Note: The battery charges under either wireless or wired mode, as long as the keyboard is plugged in.

How to Change the Image on the Screen Display

1. Please download and install the Image Custom Tool from" <https://epomaker.com/blogs/software/epomaker-image-custom-tool>"
2. Choose the first language to run the tool in English

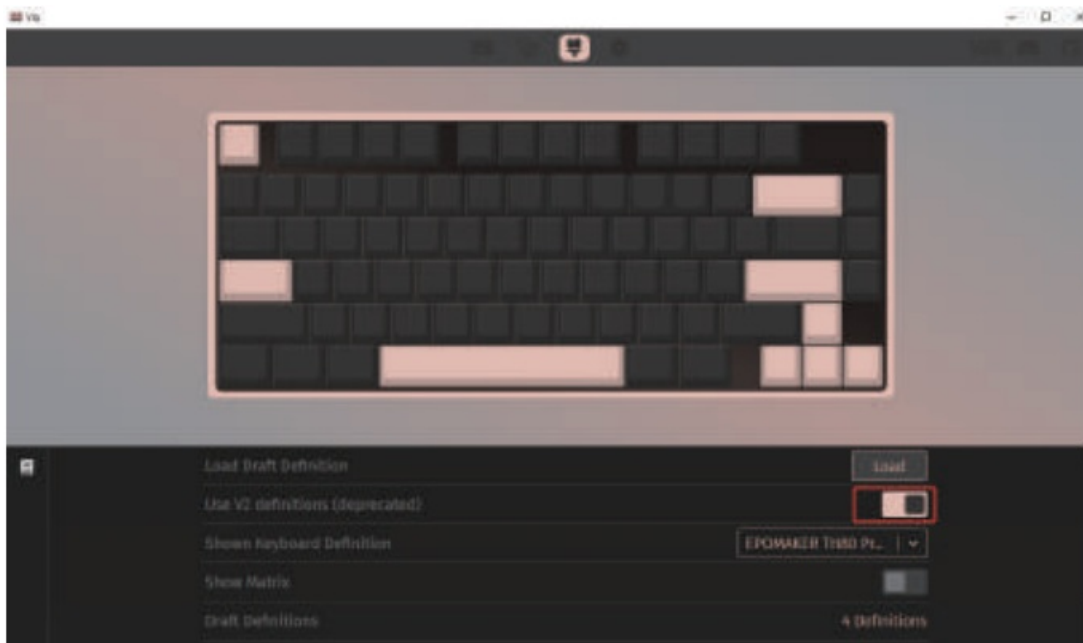


3. Upload your custom images in the tool.

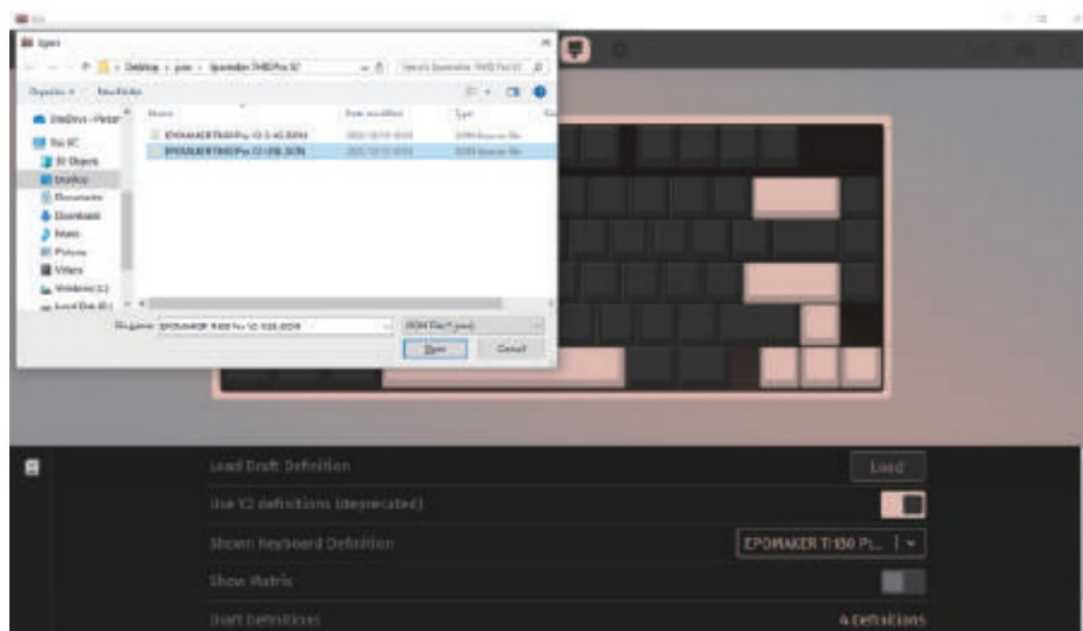


How to Use VIA

Please visit "<https://github.com/WestBerryVIA/via-releases/releases>" to download the latest VIA application for your computer's OS. Turn on the button "Use V2 definitions (deprecated)"



Import the JSON File to VIA



If the keyboard is under the wired mode: download the Epomaker TH80 Pro V2 USB JSON file via <https://epomaker.com/blogs/qmk-via/epomaker-shadows-usb-via-json> and load the file. If the keyboard is under 2.4G mode, download the Epomaker TH80 Pro V2 2.4G JSON file via <https://epomaker.com/blogs/qmk-via/epomaker-th80prov2-24g-via-json> and load the file. When the loading is completed, the “Configure” Tab displays the layout and programmable functions.



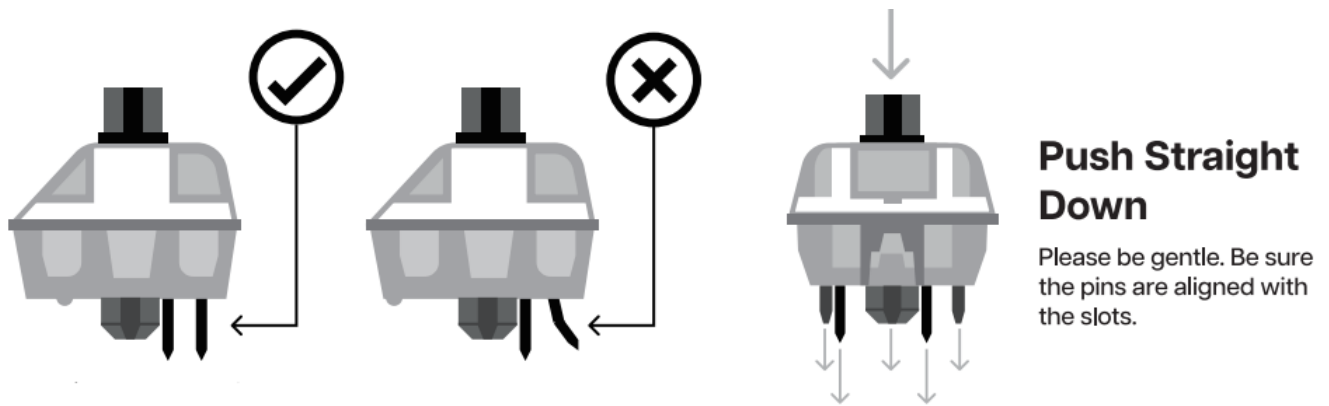
SPECS

MODEL:	EPOMAKER TH80 Pro V2
KEYS AMOUNT:	79 Keys
SCREEN SIZE:	1.14 inch
MOUNTING TYPE:	Gasket
CASE MATERIAL:	ABS Plastic
PLATE MATERIAL:	Flex-cut PC
STABILIZER TYPE:	Plate-mounted
PCB TYPE:	3/5-pin Hotswap PCB
CONNECTIVITY:	Type-C Wired, Bluetooth, 2.4G Bluetooth
ANTI-GHOST KEY:	NKRO
LED DIRECTION:	South-facing
POLLING RATE:	500hz under Wired and 2.4G Mode; 125hz under Bluetooth Mode
BATTERY CAPACITY:	3000mAh
COMPATIBILITY:	WINDOWS/MAC
DIMENSION:	323 x 145 x 45 mm
WEIGHT:	Around 0.7kg



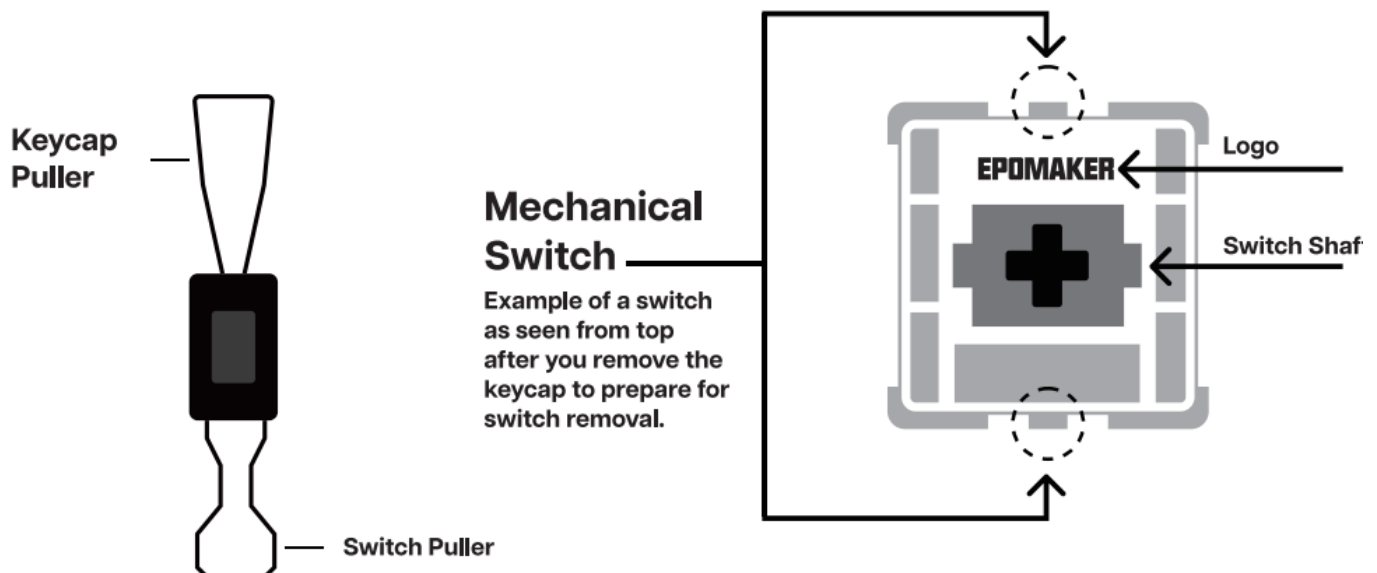
REPLACING KEYCAPS AND SWITCHES

For a full guide on how to remove keycaps and switches scan the QR Code or type in your browser:



Before installing switches, be sure the pins are clean and straight.

Included Tools



Remove Switches

1. Grab your Switch Removal Tool and align the gripping teeth vertically (on the Y-Axis) at the center of the switch, as shown in the example graphic above.
2. Grab the switch with the Switch Puller and apply pressure until the switch releases itself from the plate.
3. Using firm but gentle force pull the switch away from the keyboard using a vertical motion.

The Switch Puller tool aligns Vertically to the Switch to unclip the plastic securing the switch to the plate.

Install Switches

1. Check that all the switch metallic pins are perfectly straight and clean.
2. Align the switch vertically to have the Gateron logo facing north. The pins should align themselves to the keyboard PBC.
3. Press the switch down until you hear a click. This means your switch clips have attached themselves to the

keyboard plate.

4. Inspect the switch to ensure it's properly attached to your keyboard, and test it.

Note: If the key doesn't work you may have bent one of the switches while installing it. Pull the switch out and repeat the process. Pins may be damaged beyond repair and need replacement if this process is not done correctly. Never apply excessive force when replacing keycaps or switches. If you cannot remove or install keycaps or switches please contact customer service as soon as possible to avoid damage to the keyboard due to operating errors.

TECHNICAL ASSISTANCE

For technical assistance, please email support@epomaker.com with your purchase order number and a detailed description of your issue. We normally respond to inquiries within 24 hours. If you purchased your keyboard from a distributor or not from any the official store of Epomaker, please contact them directly for any additional help.

COMMUNITY FORUMS

Join our community and learn together with other keyboard enthusiasts.



<https://discord.gg/2q3Z7C2>



<https://www.reddit.com/r/EpomakerKeyboard/>

WARRANTY

EPOMAKER's Warranty covers any factory defects that might affect the proper functionality of your purchase. It doesn't cover any damage that may occur from normal wear and tear. If your product is defective we will send you a replacement unit. Replacement units might require you to send the defective unit back to Epomaker.

We provide a 1-year warranty for our products when bought from our website ([EPOMAKER.com](https://epomaker.com)). Your item will not be covered by your 1-year warranty if the inspection shows any sign of modification or changes unsupported by the original product, these include: Changing internal components, Assembling and reassembling the product, Replacing Batteries, etc. We will ONLY cover the item if it is bought from our official stores. You do not have a warranty with us if you bought the item from another reseller or likewise. Please contact the store that you bought your product from to resolve issues.



Made in China

Manufacturer: Shenzhen Changyun Technology Co., Ltd.

Address: Seventh Floor, Kai Daer Building, No.168 Tongsha Road

Xili Street, Nanshan District, Shenzhen, Guangdong, CN

Email: support@epomaker.com

Web: www.epomaker.com

EC REP

APEX CE SPECIALISTS GMBH

Habichtweg 1 41468 Neuss Germany

Contact: Wells Yan E-mail: info@apex-ce.com

UK REP

APEX CE SPECIALISTS LIMITED

89 Princess Street, Manchester, M1 4HT, UK

Contact: Wells Yan E-mail: info@apex-ce.com

Download PDF: [Epomaker TH80 PRO V2 Mechanical Gaming Keyboard User Manual](#)

References

- [User Manual](#)

[Manuals+](#), [Privacy Policy](#)

This website is an independent publication and is neither affiliated with nor endorsed by any of the trademark owners. The "Bluetooth®" word mark and logos are registered trademarks owned by Bluetooth SIG, Inc. The "Wi-Fi®" word mark and logos are registered trademarks owned by the Wi-Fi Alliance. Any use of these marks on this website does not imply any affiliation with or endorsement.