



# EPOMAKER EK75 Hot Swappable VIA Programmable Keyboard User Guide

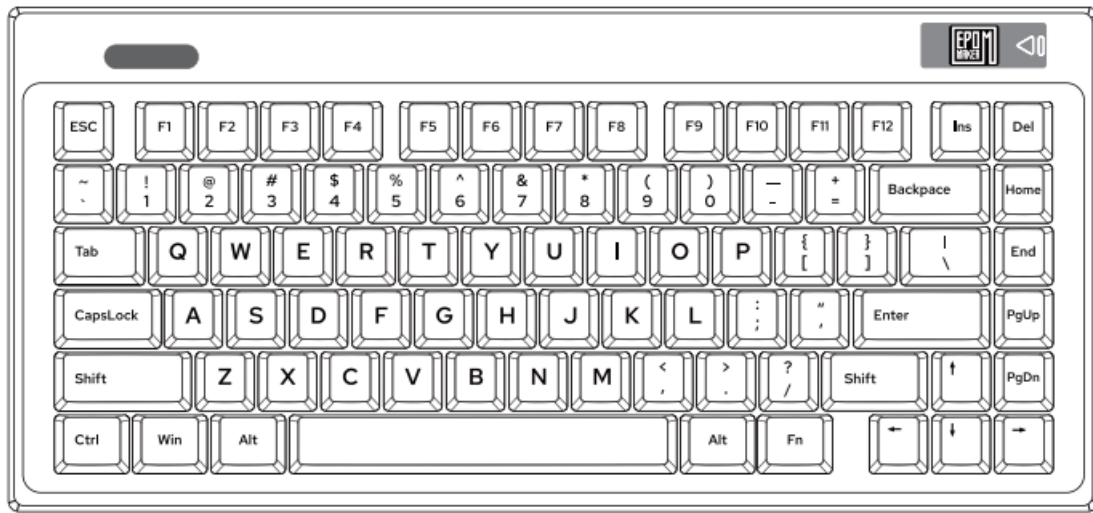
[Home](#) » [EPOMAKER](#) » EPOMAKER EK75 Hot Swappable VIA Programmable Keyboard User Guide 

## Contents

- [1 EPOMAKER EK75 Hot Swappable VIA Programmable Keyboard](#)
- [2 FUNCTION](#)
- [3 PAIRING BLUETOOTH](#)
- [4 PAIRING WIRELESS 2.4GHZ](#)
- [5 WIRED MODE](#)
- [6 HOW TO USE VIA:](#)
- [7 SPECS](#)
- [8 REPLACING KEYCAPS AND SWITCHES](#)
- [9 Remove Switches](#)
- [10 TECHNICAL ASSISTANCE](#)
- [11 WARRANTY](#)
- [12 Documents / Resources](#)



**EPOMAKER EK75 Hot Swappable VIA Programmable Keyboard**



## FUNCTION

BASIC FUNCTION		LIGHT EFFECTS	
<b>FN + F1</b>	Player	<b>FN + BACKSPACE</b>	Turn On/Off ALL Lights
<b>FN + F2</b>	Volume -	<b>FN + ↑</b>	Light Bar Brightness +
<b>FN + F3</b>	Volume +	<b>FN + ↓</b>	Light Bar Brightness -
<b>FN + F4</b>	Mute	<b>FN + ←</b>	Light Bar Hue -
<b>FN + F5</b>	Stop	<b>FN + →</b>	Light Bar Hue +
<b>FN + F6</b>	Previous Track	<b>FN + [{</b>	Light Bar Sat +
<b>FN + F7</b>	Pause/Play	<b>FN + ]}</b>	Light Bar Sat -
<b>FN + F8</b>	Next Track	<b>FN + PGUP</b>	Toggle Bar Light Effects
<b>FN + F9</b>	Mail	<b>FN + PGDN</b>	Change Bar Light Colors
<b>FN + F10</b>	Home Page		
<b>FN + F11</b>	Calculator		
<b>FN + F12</b>	Search		
FUNCTION KEY COMBINATIONS			
<b>FN+SPACEBAR (HOLD 3S)</b>	Reset the Keyboard	<b>FN + T</b>	Wired Mode
<b>FN + Q</b>	Short Press to Switch to BT1; Long Press to Pair Devices	<b>FN + WIN</b>	Win Lock
<b>FN + W</b>	Short Press to Switch to BT2; Long Press to Pair Devices	<b>FN + A</b>	Win Mode
<b>FN + E</b>	Short Press to Switch to BT3 Long Press to Pair Devices	<b>FN + S</b>	Mac Mode
<b>FN + R</b>	Short Press to Switch to 2.4G Mode; Long Press to Pair Devices		

## PAIRING BLUETOOTH

Toggle the switch to the left, make sure that the keyboard is under the wireless mode:

1. Hold Fn+Q/W /E for 3-5 seconds till the light bar flashes fast in blue, the keyboard is ready to pair.
2. Turn on your Bluetooth device and find 'Epomaker EK75-1/2/3', then connect. When the keyboard is connected to the Bluetooth device, the light bar stops flashing, the connection is done.
3. Press Fn+Q/W/E to toggle between the Bluetooth devices 1/2/3.

## PAIRING WIRELESS 2.4GHZ

Toggle the switch to the left, make sure that the keyboard is under the wireless mode:

1. Toggle the switch to 2.4G mode (the indicator flashes white when entering to the 2.4G mode), the keyboard is ready to pair.
2. Insert the 2.4G dongle to your device, the indicator stops flashing white and the connection is done.
3. Reconnect 2.4G mode: Hold Fn+R for for 3-5 seconds till the light flashes white, the keyboard is ready to pair.

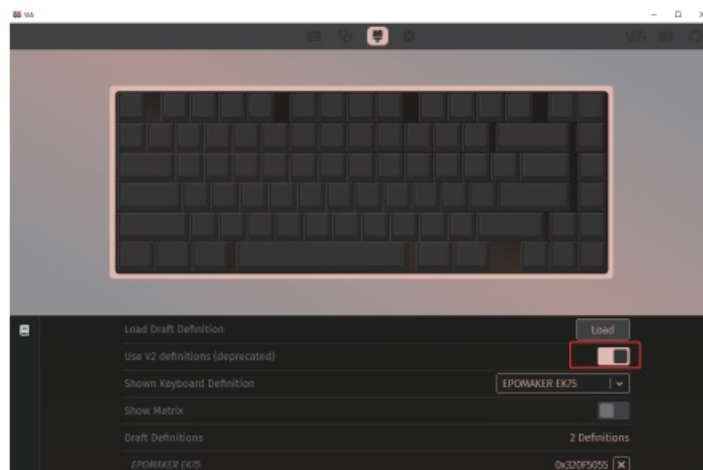
## WIRED MODE

After plug the keyboard, press Fn+ T, and the keyboard enters to the wired mode successfully.

Note: The battery charges under either wireless or wired mode, as long as it is plugged.

## HOW TO USE VIA:

1. Please visit "<https://github.com/WestBerryVIA/via-releases/releases>" to download the latest VIA application for your computer's OS. Turn on the button of "Use V2 definitions (deprecated)"

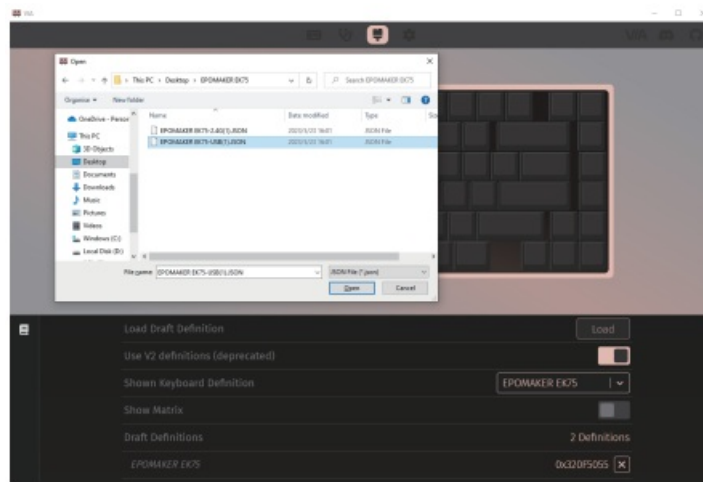


### 2. Import the JSON File to VIA

If the keyboard is under the wired mode: download Epomaker EK75 USB json file via

<https://epomaker.com/blogs/qmk-via/epomaker-ek75-usb-via-json> and load the file;

If the keyboard is under 2.4G mode, download Epomaker EK75 2.4G json file via <https://epomaker.com/blogs/qmk-via/epomaker-ek75-24g-via-json> and load the file.



3. When the loading is completed, the “Configure” Tab displays the layout and programmable functions.



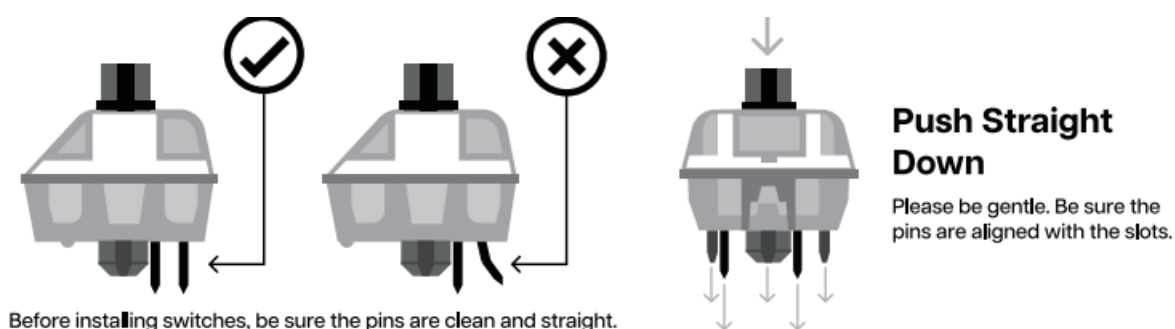
## SPECS

- **MODEL:** EPOMAKE R EK75 VIA
- **KEYS AMOUNT:** 83Keys
- **CASE MATERIAL:** Aluminum
- **STABILIZER TYPE:** Screw-in
- **PCB TYPE:** 3/5-pin Hotswap PCB
- **CONNECTIVITY:** Ty pe-C Wired, Bluetooth, 2.4G Bluetooth
- **ANTI-GHOST KEY:** NKRO
- **POLLING RATE:** 1000hz under Wired and 2.4G Mode; “125hz under Bluetooth Mode
- **BATTERY CAPACITY:** 3000mAh
- **COMPATIBILITY:** WINDOWS/MAC
- **DIMENSION:** 335x 159 x45 mm
- **WEIGHT:** Around 2kg

## REPLACING KEYCAPS AND SWITCHES

For a full guide on how to remove keycaps and switches scan the QR Code or type in your browser:

<https://epomaker.com/blogs/guides/diy-guide-how-to-remove-and-replace-your-mechanical-keyboard-switches>



### Included Tools



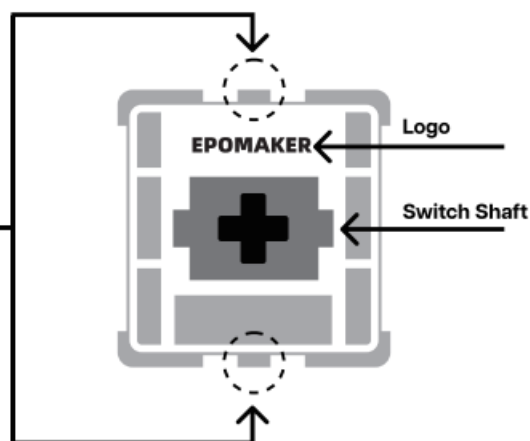
Switch Puller



Keycap Puller

### Mechanical Switch

Example of a switch as seen from top after you remove the keycap to prepare for switch removal.



The Switch Puller tool aligns Vertically to the Switch to unclip the plastic securing the switch to the plate.

## Remove Switches

1. Grab your Switch Removal Tool and align the gripping teeth vertically (on the Y-Axis) at the center of the switch, as shown in the example graphic above.
2. Grab the switch with the Switch Puller and apply pressure until the switch releases itself from the plate.
3. Using firm but gentle force pull the switch away from the keyboard using a vertical motion.

## Install Switches

1. Check that all the switch metallic pins are perfectly straight and clean.
2. Align the switch vertically to have the Gateron logo facing north. The pins should align themselves to the keyboard PBC.
3. Press the switch down until you hear a click. This means your switch clips have attached themselves to the keyboard plate.
4. Inspect the switch to ensure it's properly attached to your keyboard, and test it.

Note: If the key doesn't work its possible you may have bent one of the switches while installing it. Pull the switch out and repeat the process.

Pins may be damaged beyond repair and need replacement if this process is not done correctly. Never apply excessive force when replacing keycaps or switches. If you cannot remove or install keycaps or switches please contact customer service as soon as possible to avoid damage to the keyboard due to operating errors.

## TECHNICAL ASSISTANCE

For technical assistance, please email to [support@epomaker.com](mailto:support@epomaker.com) with your purchase order number and a detailed description of your issue.

We normally respond to enquiries within 24 hours. If you purchased your keyboard from a distributor or not from any official store of Epomaker, please contact them directly for any additional help.

## COMMUNITY FORUMS

Join our community and learn together with other keyboard enthusiasts.

<https://discord.gg/2q3Z7C2>

<https://www.reddit.com/r/Epomaker/>

## WARRANTY

EPOMAKER's Warranty covers any factory defects that might affect the proper functionality of your purchase. It doesn't cover any damage that may occur from normal wear and tear. If your product is defective we will send you a replacement unit. Replacement units might require you to send the defective unit back to Epomaker. We provide a 1 year warranty for our products when bought from our website (EPOMAKER.com). Your item will not be covered by your 1 year warranty if the inspection shows any sign of modification or changes unsupported by the original product, these include: Changing internal components, Assembling and reassembling the product, Replacing Batteries, etc. We will ONLY cover the item if it is bought from our official stores. You do not have a warranty with us if you bought the item from another reseller or likewise. Please contact the store that you bought your product from to resolve issues.

75% Triple Illlodes Hot Swappable VIA-programmable Keyboard

Should you require more assistance please email us at [support@epomaker.com](mailto:support@epomaker.com)

Made in China

Manufacturer: Shenzhen Changyun Technology Co., Ltd. Address: Seventh Floor, Kai Daer Building, No.168 Tongsha Road, Xiii Street, Nanshan District, Shenzhen, Guangdong, CN

Email: [support@epomaker.com](mailto:support@epomaker.com)

Web: [www.epomaker.com](http://www.epomaker.com)



## APEX CE SPECIALISTS LIMITED

Unit 3d North Point House, North Point Business Park, New Mallow Road Cork, T23 AT2P, Ireland

Contact: Wells

Tel: +353212066339


## APEX CE SPECIALISTS LIMITED

89 Princess Street, Mancheste, M1 4HT, UK

Contact: Wells

E-mail: [Info@apex-ce.com](mailto:Info@apex-ce.com)

## Documents / Resources

 The image shows the EPOMAKER EK75 keyboard, a compact 60% layout with a black frame and white keycaps. It features a USB-C port on the left side and a small display or indicator on the right. The text "EPOMAKER EK75" is visible at the top of the keyboard.	<p><a href="#">EPOMAKER EPOMAKER EK75 Hot Swappable VIA Programmable Keyboard</a> [pdf] User Guide</p> <p>EPOMAKER EK75 Hot Swappable VIA Programmable Keyboard, EPOMAKER, EK75 Hot Swappable VIA Programmable Keyboard, VIA Programmable Keyboard, Programmable Keyboard, Keyboard</p>
--	---