

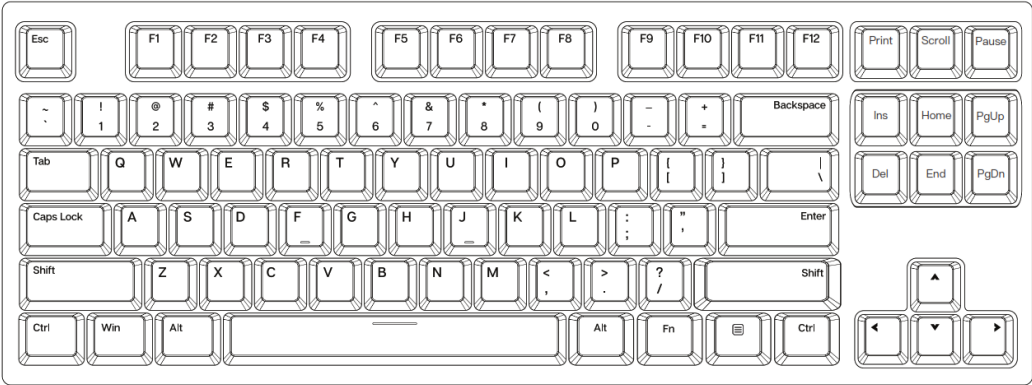


EPOMAKER EP87 87 Key Three Mode Hot Swappable Mechanical Keyboard User Manual

[Home](#) » [EPOMAKER](#) » EPOMAKER EP87 87 Key Three Mode Hot Swappable Mechanical Keyboard User Manual



QUICKSTAR TGUIDE EPOMAKER EP87



Contents

- 1 EP87 87 Key Three Mode Hot Swappable Mechanical Keyboard
- 2 QUICK FUNCTION
- 3 RGB LIGHT EFFECT CONTROL
- 4 PAIRING BLUETOOTH
- 5 BATTERY POWER
- 6 PRODUCT SPECIFICATIONS
- 7 TECHNICAL ASSISTANCE
- 8 COMMUNITY FORUMS
- 9 WARRANTY
- 10 Documents / Resources
 - 10.1 References
- 11 Related Posts

EP87 87 Key Three Mode Hot Swappable Mechanical Keyboard

87-key three-mode hot-swappable mechanical keyboard

This Quick Guide is an introduction to the use and functionality of the EPOMAKER EP87.

For in-depth guide of functionality of the customization software please refer to the manual that you can find in the official epomaker

website at <https://epomaker.com/pages/software---downloads>

Should you require more assistance please email us at support@epomaker.com

MAC MODES

FN+F1	Brightness-
FN+F2	Brightness+
FN+F3	Screenshot
FN+F4	Task Manager
FN+F5	Mute Audio
FN+F6	Volume-
FN+F7	Volume+
FN+F8	Previous Song
FN+F9	Pause/Play
FN+F10	Next Song
FN+F11	search
FN+F12	Home Page

WIN MODES

FN+F1	Brightness-
FN+F2	Brightness+
FN+F3	Task Manager
FN+F4	Resource manager
FN+F5	E-mail
FN+F6	Home Page
FN+F7	Previous Song
FN+F8	Play/Pause
FN+F9	Next Song
FN+F10	Mute Audio
FN+F11	Volume-
FN+F12	Volume+

QUICK FUNCTION

FN+A	Win Modes
FN+S	Mac Modes
Fn+Space	Current Modes
FN+WIN	Win Lock
FN+ESC (Hold 3s)	Reset
FN+1	Bluetooth 1
FN+4	2.4G
FN+2	Bluetooth 2
FN+5	Type-c
FN+3	Bluetooth 3

RGB LIGHT EFFECT CONTROL

Fn+Backspace	RGB Backlight On/Off
FN+Pause	Change RGB Backlight Effect Modes
FN+Home	Change RGB Backlight Effect
FN+PgUp	Change RGB Backlight Effect direction
FN+↑	Increase Brightness
FN+↓	Reduce Brightness
FN+←	Reduce Effect Speed
FN+→	Increase Effect Speed

WIRELESS CONNECTION

PAIRING WIRELESS 2.4GHz

1. Power on the keyboard
2. Short press FN+4 to enter 2.4G made
3. FN+4 combination key 3S to enter pairing mode
4. Insert the receiver, the indicator light flashes quickly
5. After the pairing is successful, exit the code matching, and the mode light will always be on for 25

30s after the paired device is notfound, the exit code matching mode light goes out and the keyboard goes to sleepAfter the pairing is successful, let stand for 2 minutes to enter the light sleep state, andthe keyboard enters deep sleep after 10 minutes from entering the light sleep state

PAIRING BLUETOOTH

1. Power on the keyboard
2. Short press FN+1/2/3 key combination to enter Bluetooth mode
3. Long press the FN+1/2/3 key combination for 3S, the keyboard enters the code matching state, and the indicator light flashes quickly
4. Connected to the device, the indicator light is always on for 25

if the device is not connected, the indicator light goes out, and the keyboard goes to sleep After the pairing is successful, let it stand for 2 minutes to enter the light sleep state, and the keyboard enters deep sleep after 15 minutes from entering the light sleep state

BATTERY POWER

1. The battery is below 10%, and the space flashes
2. The space is always on during charging
3. Restore the current backlight mode after full

PRODUCT SPECIFICATIONS

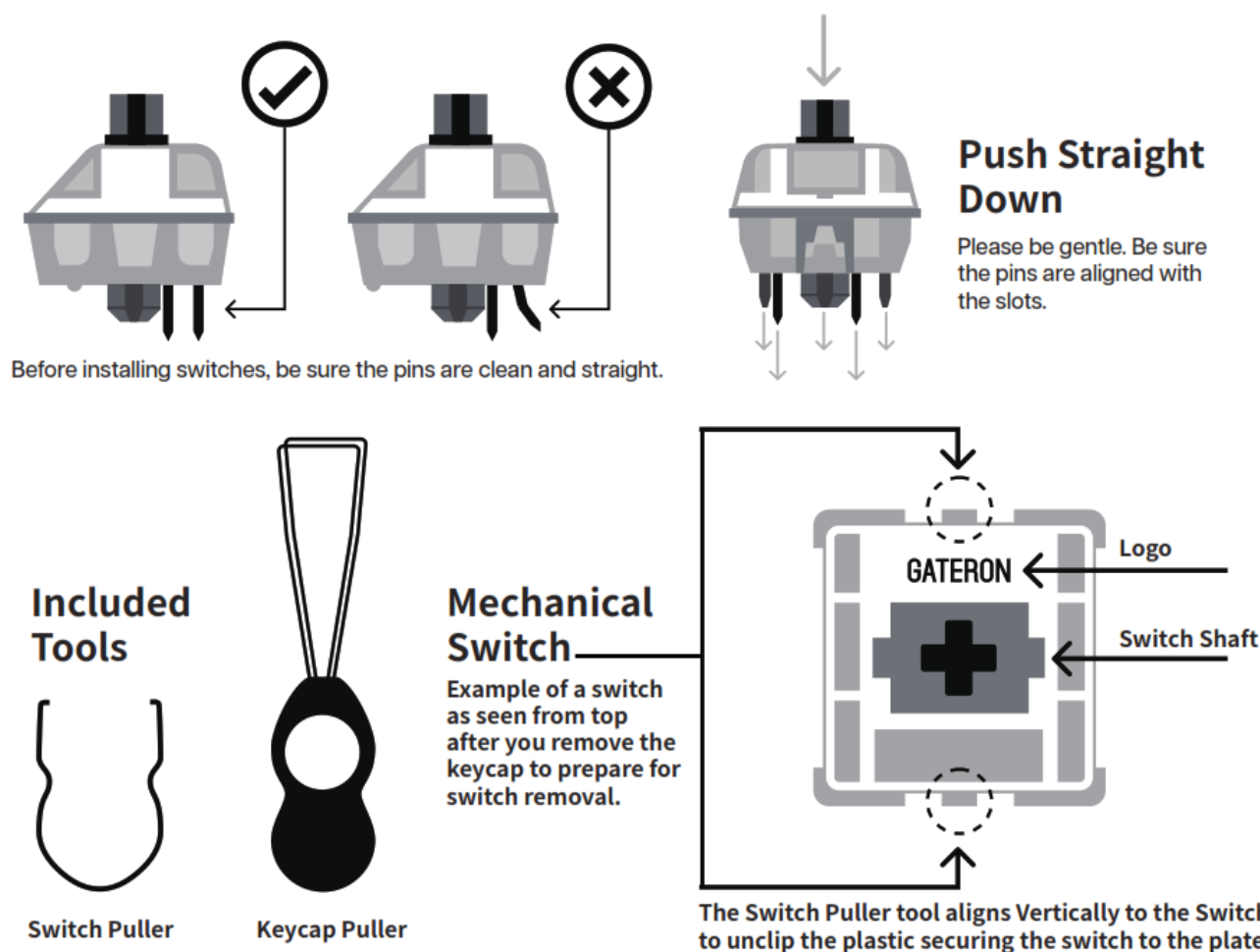
NUMBER OF KEYS	87 KEYS
HOT-SWAP	YES
BACKLIGHT	RGB BACKLIGHT
CONNECTION	Type-C BT5.0 2.4G
COMPATIBILITY	WINDOWS/MAC
BATTERY	2700mAh
PRODUCT WEIGHT	855G±20G
PRODUCT DIMENSIONS	360mm×135mm×28.5mm

REPLACING KEYCAPS AND SWITCHES

For a full guide on how to remove keycaps and switches scan the QR Code or type in your browser:



<https://epomaker.com/blogs/guides/diy-guide-how-to-remove-and-replace-your-mechanical-keyboard-switches>



Remove Switches

1. Grab your Switch Removal Tool and align the gripping teeth vertically (on the Y-Axis) at the center of the switch, as shown in the example graphic above.
2. Grab the switch with the Switch Puller and apply pressure until the switch releases itself from the plate.
3. Using firm but gentle force pull the switch away from the keyboard using a vertical motion.

Install Switches

1. Check that all the switch metallic pins are perfectly straight and clean.
2. Align the switch vertically to have the Gateron logo facing north. The pins should align themselves to the keyboard PCB.
3. Press the switch down until you hear a click. This means your switch clips have attached themselves to the keyboard plate.
4. Inspect the switch to ensure it's properly attached to your keyboard, and test it.



Note: If the key doesn't work it's possible you may have bent one of the switches while installing it. Pull the switch out and repeat the process. Pins may be damaged beyond repair and need replacement if this process is not done correctly. Never apply excessive force when replacing keycaps or switches. If you cannot remove or install keycaps or switches please contact customer service as soon as possible to avoid damage to the keyboard due to operating errors.

TECHNICAL ASSISTANCE

For technical assistance, please email to support@epomaker.com with your purchase order number and a detailed description of your issue. We normally respond to enquiries within 24 hours. If you purchased your keyboard from a distributor or not from any official store of Epomaker, please contact them directly for any additional help.

COMMUNITY FORUMS

Join our community and learn together with other keyboard enthusiasts.



<https://discord.gg/2q3Z7C2>



<https://www.reddit.com/r/Epomaker/>

WARRANTY

EPOMAKER's Warranty covers any factory defects that might affect the proper functionality of your purchase. It doesn't cover any damage that may occur from normal wear and tear. If your product is defective we will send you a replacement unit. Replacement units might require you to send the defective unit back to Epomaker.

We provide a 1 year warranty for our products when bought from our website (EPOMAKER.com). Your item will not be covered by your 1 year warranty if the inspection shows any sign of modification or changes unsupported by the original product, these include: Changing internal components, Assembling and reassembling the product, Replacing Batteries, etc.

We will ONLY cover the item if it is bought from our official stores. You do not have a warranty with us if you bought the item from another reseller or likewise. Please contact the store that you bought your product from to resolve issues.



<https://epomaker.com/pages/software-downloads>

Made in China

Manufacturer: Shenzhen Changyun Technology Co., Ltd.

Address: Seventh Floor, Kai Daer Building, No.168 Tongsha Road, Xili Street, Nanshan District, Shenzhen, Guangdong, CN

Email: support@epomaker.com

Web: www.epomaker.com



APEX CE SPECIALISTS LIMITED

Address: UNIT 3D NORTH POINT HOUSE, NORTH POINT BUSINESS PARK, NEW MALLOW ROAD CORK, T23 AT2P, IRELAND


Contact : Wells

Tel: +353212066339

Email: info@apex-ce.com



Documents / Resources

	<p>EPOMAKER EP87 87 Key Three Mode Hot Swappable Mechanical Keyboard [pdf] User Manual</p> <p>EP87 87 Key Three Mode Hot Swappable Mechanical Keyboard, EP87, 87 Key Three Mode Hot Swappable Mechanical Keyboard, Swappable Mechanical Keyboard, Mechanical Keyboard</p>
---	---

References

- ce.com
- [Epomaker – epomaker](#)
- [Epomaker – epomaker](#)
- [Epomaker](#)
- [DIY Guide: How to Replace Your Mechanical Keyboard Switches – epomaker](#)
- [Software – epomaker](#)
- [Reddit - Dive into anything](#)