



EPOMAKER EK68 VIA RGB VIA-Programmable Keyboard User Guide

[Home](#) » [EPOMAKER](#) » EPOMAKER EK68 VIA RGB VIA-Programmable Keyboard User Guide 

EPOMAKER EK68 VIA RGB VIA-Programmable Keyboard User Guide



Contents

- [1 BASIC FUNCTION](#)
- [2 LIGHT EFFECTS](#)
- [3 FUNCTION KEY COMBINATIONS](#)
- [4 PAIRING BLUETOOTH](#)
- [5 PAIRING WIRELESS 2.4GHZ](#)
- [6 SPECS](#)
- [7 Mechanical Switch](#)
- [8 Install Switches](#)
- [9 TECHNICAL ASSISTANC](#)
- [10 COMMUNITY FORUMS](#)
- [11 WARRANTY](#)
- [12 Documents / Resources](#)
 - [12.1 References](#)
- [13 Related Posts](#)

BASIC FUNCTION

FN + 1 F1
FN + 2 F2
FN + 3 F3
FN + 4 F4
FN + 5 F5
FN + 6 F6
FN + 7 F7
FN + 8 F8
FN + 9 F9
FN + 0 F10
FN + - F11
FN + = F12
FN + ESC
FN + I PrtSc
FN + O ScrLk
FN + P Pausr
FN + DEL Insert
FN + PGUP Home
FN + PGDN End
FN + WIN Win Lock

LIGHT EFFECTS

FN + ENTER Turn On/Off Backlights
FN + \ | Toggle RGB Effects
FN + [{ Backlights Speed –
FN +]} Backlights Speed +
FN + → Hue +
FN + ← Hue –
FN + ; : Saturation +
FN + ' " Saturation –
FN + ↓ Backlights Brightness –
FN + ↑ Backlights Brightness +

FUNCTION KEY COMBINATIONS

FN+BACKSPACE (HOLD 3S) Reset the Keyboard
FN + Q Short Press to Switch to BT1; Long Press to Pair Devices
FN + W Short Press to Switch to BT2; Long Press to Pair Devices
FN + E Short Press to Switch to BT3 Long Press to Pair Devices
FN + R Short Press to Switch to 2.4G Mode; Long Press to Pair Devices
FN + B Battery Check

PAIRING BLUETOOTH

Toggle the switch to make sure that the keyboard is under the Bluetooth mode:

1. Hold Fn+Q/W/E for 3-5 seconds till the indicators flashes fast in red/green/blue, the keyboard is ready to pair.
2. Turn on your Bluetooth device and find 'Epomaker EK68-1/2/3', then connect. When the keyboard is connected to the Bluetooth device, the indicator light stops flashing and stays on, the connection is done.
3. Press Fn+Q/W/E to toggle between the Bluetooth devices 1/2/3

PAIRING WIRELESS 2.4GHZ

1. Toggle the switch to 2.4G mode (the indicator flashes white when entering to the 2.4G mode), the keyboard is ready to pair.
2. Insert the 2.4G dongle to your device, the indicator stops flashing white and the connection is done.
3. Reconnect 2.4G mode: Hold Fn+R for for 3-5 seconds till the light flashes white, the keyboard is ready to pair.

WIRED MODE

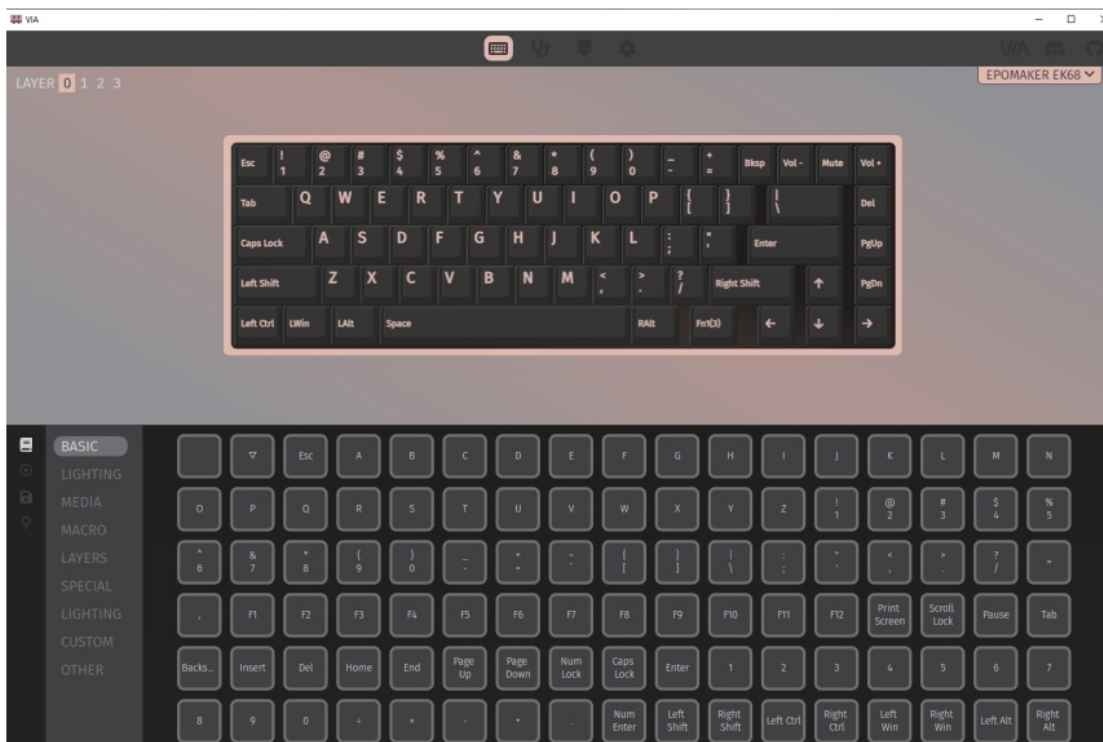
Toggle the switch to the wired mode, and the keyboard enters to the wired mode successfully.

BATTERY CHECK

Hold Fn+B, the keys from 1! to 0) lights up to show the battery percentage; for example, if the keys from 1! to 6^ light up when holding Fn+B, it means that the battery life is currently 60%; if keys of 1!-0) light up, battery life is 100%.

HOW TO USE VIA

1. Please visit “<https://github.com/WestBerryVIA/via-releases/releases>” to download the latest VIA application for your computer’s OS. Turn on the button of “Use V2 definitions (deprecated)”



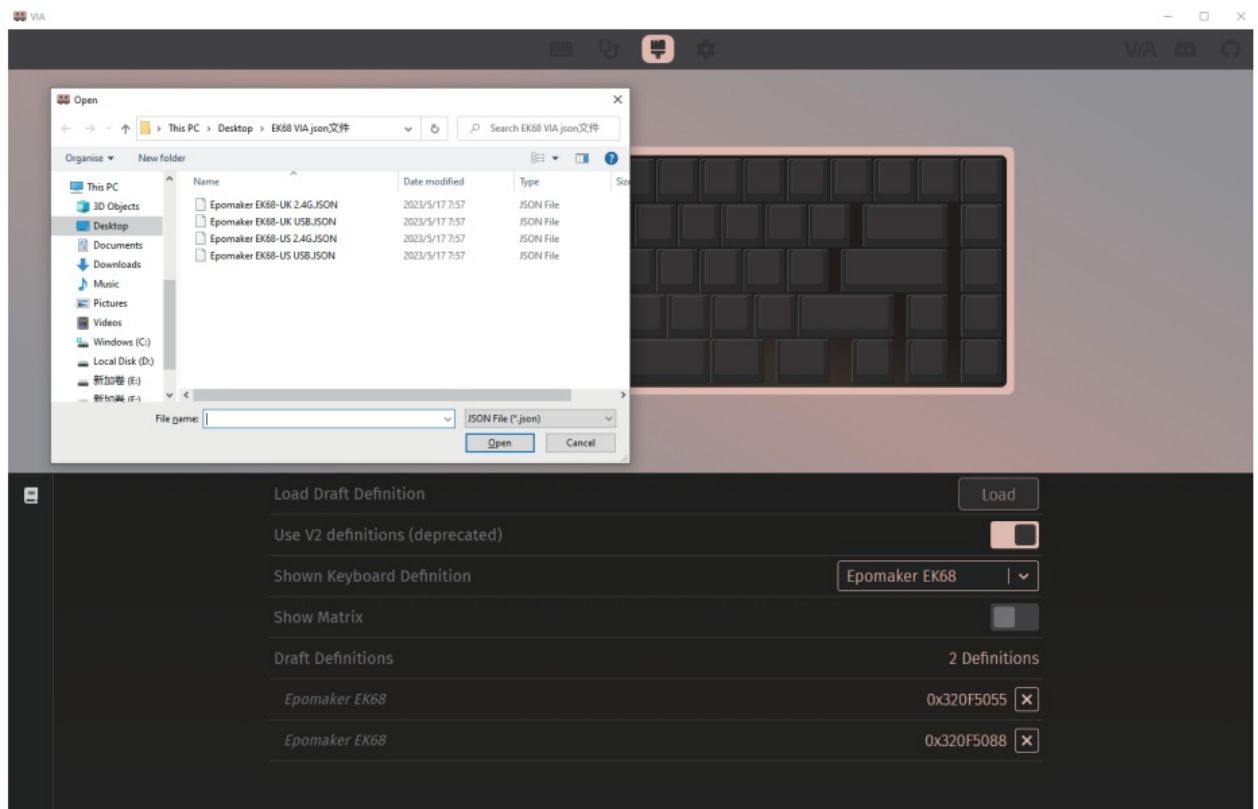
2. Import the JSON File to VIA

1. For EK68 ANSI version

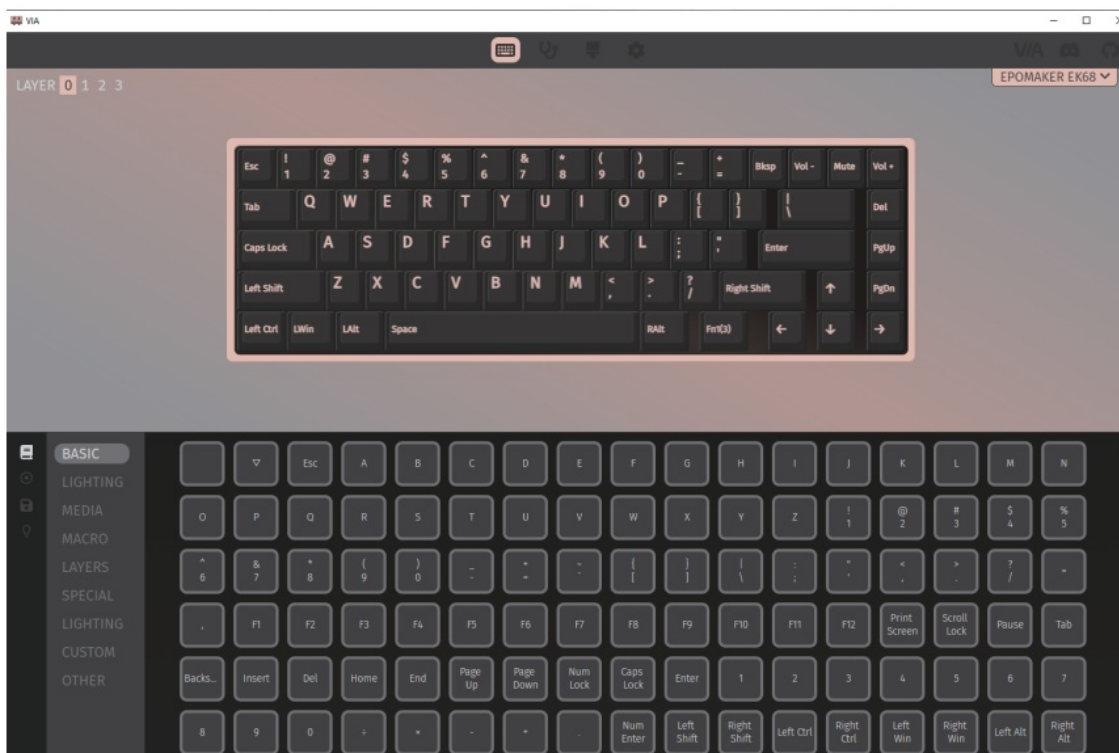
If the keyboard is under the wired mode: download Epomaker EK68 ANSI wired json file via <https://epomaker.com/blogs/qmk-via/epomaker-ek68-ansi-usb-via>-json and load the file; If the keyboard is under 2.4G mode, download Epomaker EK68 ANSI 2.4G json file via <https://epomaker.com/blogs/qmk-via/epomaker-ek68-ansi-24g-via>-json and load the file.

2. for EK68 ISO version

If the keyboard is under the wired mode: download Epomaker EK68 ISO wired json file via <https://epomaker.com/blogs/qmk-via/epomaker-ek68-iso-usb-via>-json and load the file; If the keyboard is under 2.4G mode, download Epomaker EK68 ISO 2.4G json file via <https://epomaker.com/blogs/qmk-via/epomaker-ek68-iso-24g-via>-json and load the file.



3. When the loading is completed, the “Configure” Tab displays the layout and programmable functions.



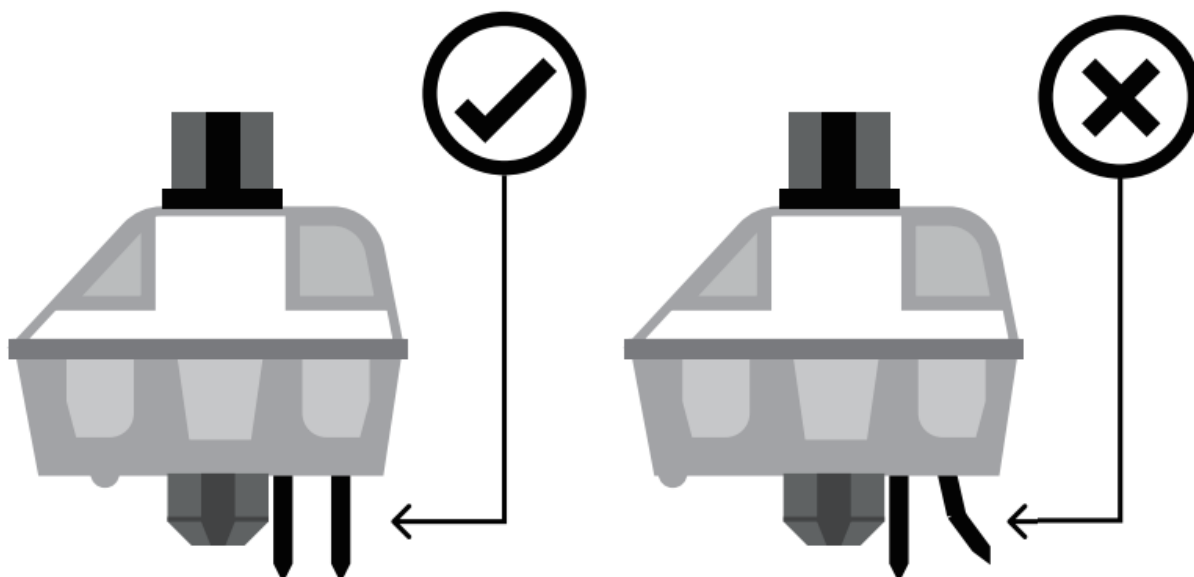
SPECS

MODEL:	EPOMAKER EK68 VIA
KEYS AMOUNT:	67 Keys + 1 knob
CASE MATERIAL	ABS Plastic
STABILIZER TYPE:	Plate-mounted
PCB TYPE:	3/5-pin Hotswap PCB
CONNECTIVITY:	Type-C Wired
ANTI-GHOST KEY:	NKRO
POLLING RATE:	1000hz under Wired and 2.4G Mode; 125hz under Bluetooth Mode
BATTERY CAPACITY:	3000mA
COMPATIBILITY:	WINDOWS/MA
DIMENSION:	325 x 117 x 41 mm
WEIGHT:	Around 0.8kg

REPLACING KEY CAPS AND SWITCHES

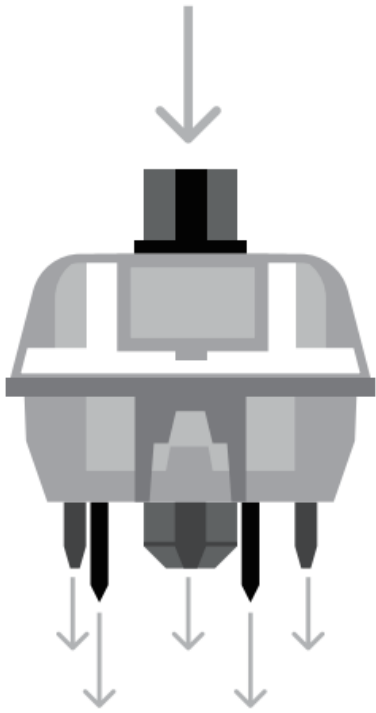
For a full guide on how to remove keycaps and switches scan the QR Code or type in your browser:
<https://epomaker.com/blogs/guides/diy-guide-how-to-remove-and-replace-your-mechanical-keyboardswitches>

Before installing switches, be sure the pins are clean and straight.

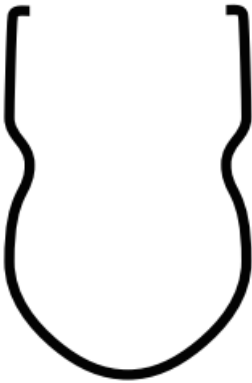


Push Straight Dow

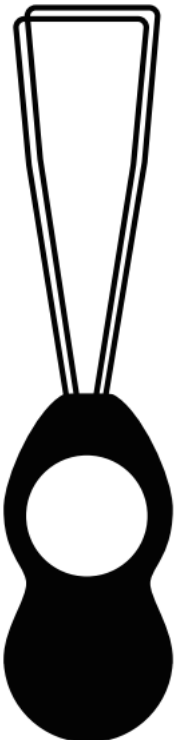
Please be gentle. Be sure the pins are aligned with the slots.



Included Tools



Keycap Puller



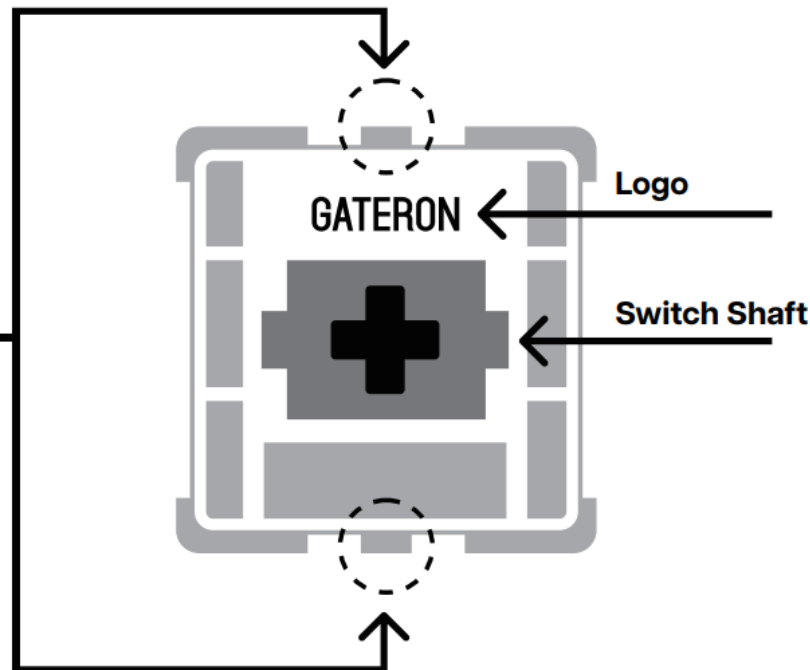
Remove Switches

1. Grab your Switch Removal Tool and align the gripping teeth vertically (on the Y-Axis) at the center of the switch, as shown in the example graphic above.
2. Grab the switch with the Switch Puller and apply pressure until the switch releases itself from the plate.
3. Using firm but gentle force pull the switch away from the keyboard using a vertical motion.

Mechanical Switch

Mechanical Switch

Example of a switch as seen from top after you remove the keycap to prepare for switch removal.



The Switch Puller tool aligns Vertically to the Switch to unclip the plastic securing the switch to the plate.

Install Switches

1. Check that all the switch metallic pins are perfectly straight and clean.
2. Align the switch vertically to have the Gateron logo facing north. The pins should align themselves to the keyboard PCB.
3. Press the switch down until you hear a click. This means your switch clips have attached themselves to the keyboard plate.
4. Inspect the switch to ensure it's properly attached to your keyboard, and test it



Note: If the key doesn't work it's possible you may have bent one of the switches while installing it. Pull the switch out and repeat the process.

Pins may be damaged beyond repair and need replacement if this process is not done correctly. Never apply excessive force when replacing keycaps or switches. If you cannot remove or install keycaps or switches please contact customer service as soon as possible to avoid damage to the keyboard due to operating errors.

TECHNICAL ASSISTANCE

For technical assistance, please email to support@epomaker.com with your purchase order number and a detailed description of your issue.

We normally respond to enquiries within 24 hours. If you purchased your keyboard from a distributor or not from any official store of epomaker, please contact them directly for any additional help.

COMMUNITY FORUMS

Join our community and learn together with other keyboard enthusiasts.



<https://discord.gg/2q3Z7C2>



<https://www.reddit.com/r/Epomaker/>

WARRANTY

EPOMAKER's Warranty covers any factory defects that might affect the proper functionality of your purchase. It doesn't cover any damage that may occur from normal wear and tear. If your product is defective we will send you a replacement unit. Replacement units might require you to send the defective unit back to Epomaker.

We provide a 1 year warranty for our products when bought from our website (EPOMAKER.com). Your item will not be covered by your 1 year warranty if the inspection shows any sign of modification or changes unsupported by the original product, these include: Changing internal components, Assembling and reassembling the product, Replacing Batteries, etc.

We will ONLY cover the item if it is bought from our official stores. You do not have a warranty with us if you bought the item from another reseller or likewise. Please contact the store that you bought your product from to resolve issues.

Documents / Resources



[EPOMAKER EK68 VIA RGB VIA-Programmable Keyboard](#) [pdf] User Guide
EK68 VIA RGB VIA-Programmable Keyboard, EK68 VIA, RGB VIA-Programmable Keyboard, VIA-Programmable Keyboard, Keyboard

References

-  [Epomaker](#)
-  [Epomaker](#)
-  [Epomaker](#)
-  [Epomaker EK68 VIA ANSI 2.4G JSON File](#)
-  [Epomaker EK68 VIA ANSI USB JSON File](#)
-  [Epomaker EK68 VIA ISO 2.4G JSON File](#)
-  [Epomaker EK68 VIA ISO USB JSON File](#)
-  [Releases · WestBerryVIA/via-releases · GitHub](#)

-  [Reddit - Dive into anything](#)

Manuals+.