




**Cypher96 Type-C
RGB Mechanical
Gaming Keyboard**



EPOMAKER Cypher96 Type-C RGB Mechanical Gaming Keyboard User Guide

[Home](#) » [EPOMAKER](#) » EPOMAKER Cypher96 Type-C RGB Mechanical Gaming Keyboard User Guide 

Contents

- [1 EPOMAKER Cypher96 Type-C RGB Mechanical Gaming Keyboard](#)
- [2 CONNECTION & OTHER FUNCTIONS](#)
- [3 PAIRING BLUETOOTH](#)
- [4 Specifications](#)
- [5 REPLACING KEYCAPS AND SWITCHES](#)
- [6 TECHNICAL ASSISTANCE](#)
- [7 WARRANTY](#)
- [8 CONTACT](#)
- [9 Documents / Resources](#)
 - [9.1 References](#)



EPOMAKER Cypher96 Type-C RGB Mechanical Gaming Keyboard



1800 Compact Hot-Swappable Bluetooth/2.4G/Type-C RGB

Mechanical Gaming Keyboard with Numpad / Calculator Should you require more assistance, email us at support@epomaker.com

	WINDOWS	MAC
F1	F1	Screen Brightness –
F2	F2	Screen Brightness +
F3	F3	Multi-Task
F4	F4	Mission Control
F5	F5	Search
F6	F6	Toggle Typing Language
F7	F7	Previous track
FB	FB	Play/Pause
F9	F9	Next track
F10	F10	Mute
F11	F11	Volume-
F12	F12	Volume+
FN+F1	Screen Brightness –	F1

FN +F2	Screen Brightness +	F2
FN +F3	Multi-Task	F3
FN+F4	Mission Control	F4
FN +F5	Search	F5
FN +F6	Toggle Typing Language	F6
FN +F7	Previous track	F7
FN +FB	Play/Pause	FB
FN +F9	Next track	F9
FN + F10	Mute	F10
FN + F11	Volume-	F11
FN + F12	Volume+	F12
FN+WIN	Lock/Unlock Win Key	

FN + ESC Swap functions of F1, F2, ..., F12 and Fn+F1, Fn+F2, ... Fn+F12

CONNECTION & OTHER FUNCTIONS

FN + 1! Short Press to Switch to BT1;
Long Press to Pair Devices

FN + 2@ Short Press to Switch to BT2;
Long Press to Pair Devices

FN + 3# Short Press to Switch to BT3
Long Press to Pair Devices

FN + 4\$ Short Press to Switch to 2.4G Mode;
Long Press to Pair Devices

FN + Q Mac Mode

FN + W Win Mode

FN + M Turn on/off Buzzer

FN + NUM Toggle the Numpad
and Calculator

**FN +
SPACEBAR** Long press 3s to restore
the default setting

**FN +
BACKSPACE** Battery Check

LIGHTS

FN + \ 	Toggle Backlight Effects
FN + ↑	Backlight Brightness +
FN + ↓	Backlight Brightness -
FN + ←	Backlight Speed -
FN + →	Backlight Speed +
FN + ENTER	Toggle Backlight Colors
FN + CAPSLOCK	Toggle Sidelight Effects
FN + A	Toggle Sidelight Brightness
FN + S	Toggle Sidelight Speed

PAIRING BLUETOOTH

1. Toggle the switch to the Bluetooth side, then press Fn+1!/2@/3# to initiate the Bluetooth mode
2. Hold Fn+ 1!/2@/3# for 3-5 seconds till the indicator flashes fast, and the keyboard is ready to pair.
3. Turn on your Bluetooth device and find “EPOMAKER Cypher 96 -1/2/3”, then connect. When the keyboard is connected to the Bluetooth device, the indicator stops flashing.
4. Press Fn+ 1!/2@/3# to toggle between the Bluetooth devices 1/2/3.

PAIRING WIRELESS 2.4GHZ

1. Toggle the switch to the 2.4G side, then press Fn+4\$ to initiate the 2.4G mode
2. Hold Fn+4\$ for 3-5 seconds till the first indicator flashes fast, and the keyboard is ready to pair.
3. Insert the 2.4G dongle into your device, the first indicator stops flashing green and the connection is done.

Note: The keyboard enters into sleep mode after 2 minutes of inactivity, the keyboard lights go off, and it can be reactivated by any key press.

Specifications

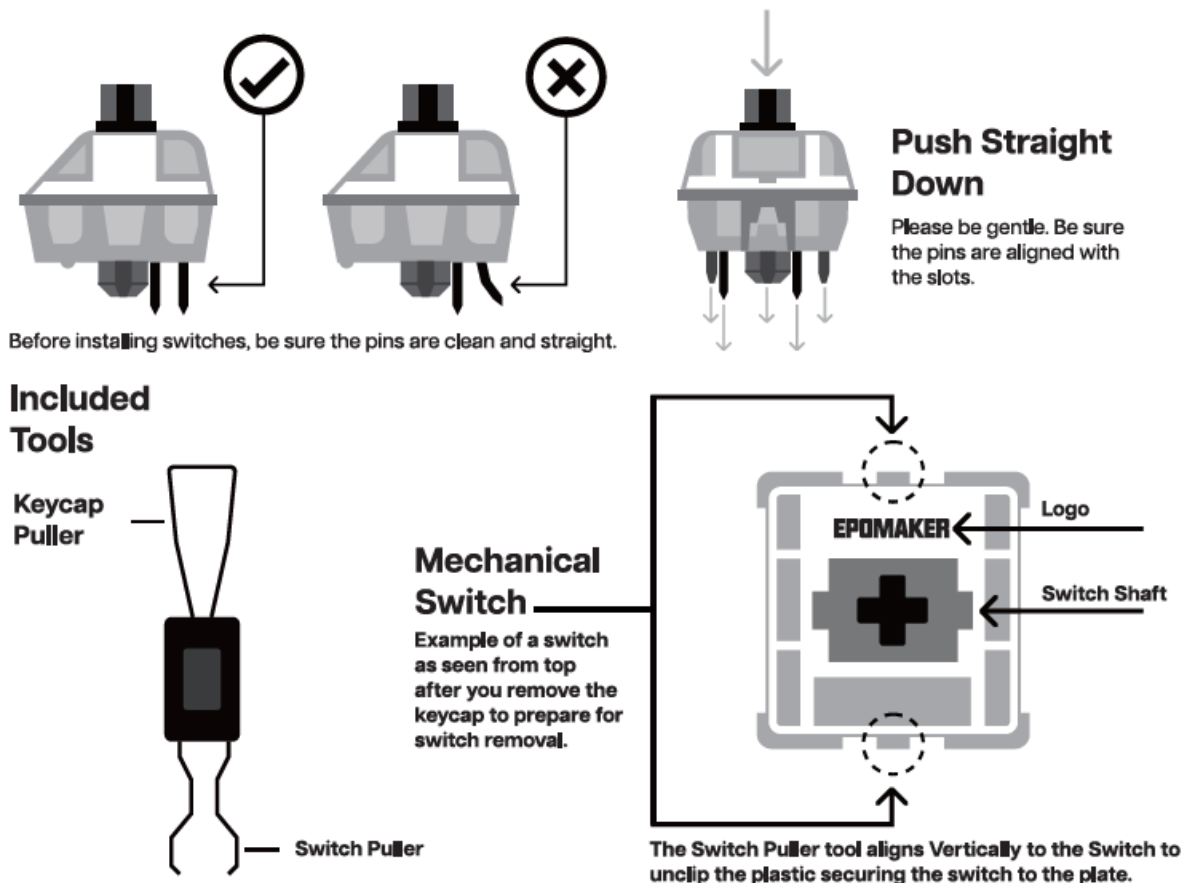
- MODEL: Epomaker Cypher 96
- KEYS AMOUNT: 96
- MOUNTING TYPE: Gasket mount
- CASE MATERIAL: ABS Plastic
- PLATE MATERIAL: PC
- STABILIZER TYPE: Plate-mounted stabilizers
- PCB TYPE: 3/5-pin Hotswap PCB
- BATTERY CAPACITY: 4000mAh+4000mAh
- CONNECTIVITY: Type-C Wired, 2.4 & Bluetooth Wireless

- ANTI-GHOST KEY: NKRO in all modes
- POLLING RATE: 1000hz in Type-C Wired & 2.4G modes
- BACKLIGHTS: South-facing LEDs
- COMPATIBILITY: WINDOWS/MAC
- DIMENSION: 394 × 145 × 43 mm
- WEIGHT: Around 1kg

REPLACING KEYCAPS AND SWITCHES

- For a full guide on how to remove keycaps and switches scan the QR Code or type in your browser:

<https://epomaker.com/blogs/guides/diy-guide-how-to-remove-and-replace-your-mechanical-keyboard-switches>.



Remove Switches

1. Grab your Switch Removal Tool and align the gripping teeth vertically (on the Y-Axis) at the center of the switch, as shown in the example graphic above.
2. Grab the switch with the Switch Puller and apply pressure until the switch releases itself from the plate.
3. Using firm but gentle force pull the switch away from the keyboard using a vertical motion.

Install Switches

1. Check that all the switch metallic pins are perfectly straight and clean.
2. Align the switch vertically to have the Gateron logo facing north. The pins should align themselves to the keyboard PCB.
3. Press the switch down until you hear a click. This means your switch clips have attached themselves to the keyboard plate.
4. Inspect the switch to ensure it's properly attached to your keyboard, and test it.

Note: If the key doesn't work you may have bent one of the switches while installing it. Pull the switch out and repeat the process.

Pins may be damaged beyond repair and need replacement if this process is not done correctly. Never apply excessive force when replacing keycaps or switches. If you cannot remove or install keycaps or switches please contact customer service as soon as possible to avoid damage to the keyboard due to operating errors.

TECHNICAL ASSISTANCE

- For technical assistance, please email support@epomaker.com with your purchase order number and a detailed description of your issue.
- We normally respond to inquiries within 24 hours.
- If you purchased your keyboard from a distributor or not from any official store of Epomaker, please contact them directly for any additional help.

COMMUNITY FORUMS

Join our community and learn together with other keyboard enthusiasts.



- <https://discord.gg/2q3Z7C2>



- <https://www.reddit.com/r/EpomakerKeyboard/>

WARRANTY

- EPOMAKER's Warranty covers any factory defects that might affect the proper functionality of your purchase.
- It doesn't cover any damage that may occur from normal wear and tear. If your product is defective we will send you a replacement unit.
- Replacement units might require you to send the defective unit back to Epomaker.
- We provide a 1 year warranty for our products when bought from our website ([EPOMAKER.com](https://epomaker.com)).
- Your item will not be covered by your 1-year warranty if the inspection shows any sign of modification or changes unsupported by the original product, these include: Changing internal components, Assembling and reassembling the product, Replacing Batteries, etc.
- We will ONLY cover the item if it is bought from our official stores.
- You do not have a warranty with us if you bought the item from another reseller or likewise.

- Please contact the store that you bought your product from to resolve issues.

CONTACT

APEX CE SPECIALISTS GMBH

- Habichtweg 1 41468 Neuss Germany
- Contact: Wells Yan
- E-mail: info@apex-ce.com

APEX CE SPECIALISTS LIMITED


- 89 Princess Street, Manchester, M1 4HT, UK
- Contact: Wells Yan
- E-mail: info@apex-ce.com

Made in China

- Manufacturer: Shenzhen Changyun Technology Co., Ltd.
- Address: Seventh Floor, Kai Daer Building, No.168 Tongsha Road,
- Xili Street, Nanshan District, Shenzhen, Guangdong, CN
- Email: support@epomaker.com
- Web: www.epomaker.com



Documents / Resources

	EPOMAKER Cypher96 Type-C RGB Mechanical Gaming Keyboard [pdf] User Guide Cypher96, Cypher96 Type-C RGB Mechanical Gaming Keyboard, Type-C RGB Mechanical Gaming Keyboard, RGB Mechanical Gaming Keyboard, Mechanical Gaming Keyboard, Gaming Keyboard, Keyboard
---	--

References

- [User Manual](#)

[Manuals+](#), [Privacy Policy](#)

This website is an independent publication and is neither affiliated with nor endorsed by any of the trademark owners. The "Bluetooth®" word mark and logos are registered trademarks owned by Bluetooth SIG, Inc. The "Wi-Fi®" word mark and logos are registered trademarks owned by the Wi-Fi Alliance. Any use of these marks on this website does not imply any affiliation with or endorsement.