



EPOMAKER CIDOO V65 Mechanical Keyboard User Manual

[Home](#) » [EPOMAKER](#) » EPOMAKER CIDOO V65 Mechanical Keyboard User Manual 



V65 Mechanical Keyboard User Manual



Contents

- [1 CIDOO V65 Mechanical Keyboard](#)
- [2 THE BASIC](#)
- [3 CUSTOM CONFIGURATION](#)
- [4 Key description](#)
- [5 Documents / Resources](#)
 - [5.1 References](#)
- [6 Related Posts](#)

CIDOO V65 Mechanical Keyboard

Cidoo VIA Wired Bluetooth Dual Mode Aluminium Mechanical Keyboard A Customizable Keyboard that Supports VIA Software

Thank you for purchasing your Cidoo V65 Mechanical Keyboard . We hope you 're enjoying it so far . If you 've landed here . you probably want to take full advantage of the keyboard's features so you 've come to the right place.

We'll start with the basics, then we'll move on to complete custom configuration .

THE BASIC

Default Hot Keys

Hold FN + listed keys to activate

LED keys

FN+↑: LED backlight brightness Increase

FN+↓: LED backlight brightness decrease

FN+←: LED backlight speed decrease

FN+→: LED backlight speed increase

FN+ \/: LED toggle On/Off

FN+] }: Toggle LED backlighting mode

FN+P: LED hue increase

FN+:: : LED hue decrease

FN+ { [LED saturation increase

FN+1" : LED saturation decrease

FN+Backspace: Long press

FN+Backspace for 3 seconds to reset the keyboard to the factory setting

Media Keys

FN+A: Windows System

FN+S: Mac System

Fn+1: F1 Fn+3: F3 Fn+5: F5 Fn +2: F2 Fn +4: F4 Fn+6: F6 Fn+7: F7	Fn+9: F9 Fn+- : F11 Fn+Esc Fn+8: F8 Fn+0: F10 Fn+ =+: F12
--	--

USB Wired/BT5.0 Dual Mode Pairing Method:

Wired Mode

Please insert USB cable into your computer. the keyboard backlight lights on and turns to the default of RGB backlight effect, it means connection successful.

Bluetooth® Pairing Instructions:

Perform the following steps to pair this keyboard with your device(s).

1. This Bluetooth keyboard can be paired with up to three devices at the same time. Power on keyboard . (Close to USB port is OFF. Reverse direction is ON) .Press and hold the FN and Z / or FN and X . or FN and C keys for 3-5 seconds. When Z/X/C starts flashing. the keyboard is ready to connect.
2. Open the Bluetooth settings on your device and scan for available devices.Locate and select one of BT device name entry. -CIDOO V65-1" for FN+Z; "CIDOO V65-2" for FN+X: -CIDOO V65-3" for FN+C.
3. Once the keyboard has connected to your device, the Z/X/C key will cease flashing. indicating that Bluetooth

pairing was successful. Short press “FN” and “Z” or -FN” and “X” or “FN- and “C” keys to s’Mtch paired Bluetooth device.

FN+Space : Short press “FN” and “SPACE” key, will disconnect Bluetooth mode and switch to USB wired mode.

The Bluetooth connection has memory . It will disconnect when power off the keyboard and the keyboard will re-connect to the last device when power on the keyboard again.

Auto sleep mode

After 5 minutes without a keypress. the backlighting will turn off to conserve battery. Any keypress will be awaken the keyboard.

After 30 minutes without a keypress. the keyboard will entry deep sleep under Bluetooth mode. Bluetooth disconnect, any keypress will reconnect the keyboard

Battery Charging:

FN key will blink red repeatedly when the keyboard is low on battery (battery voltage less than 3.5V). It is always red light when charging. it’s turns to the default RGB backlighting after charging finished.

CUSTOM CONFIGURATION

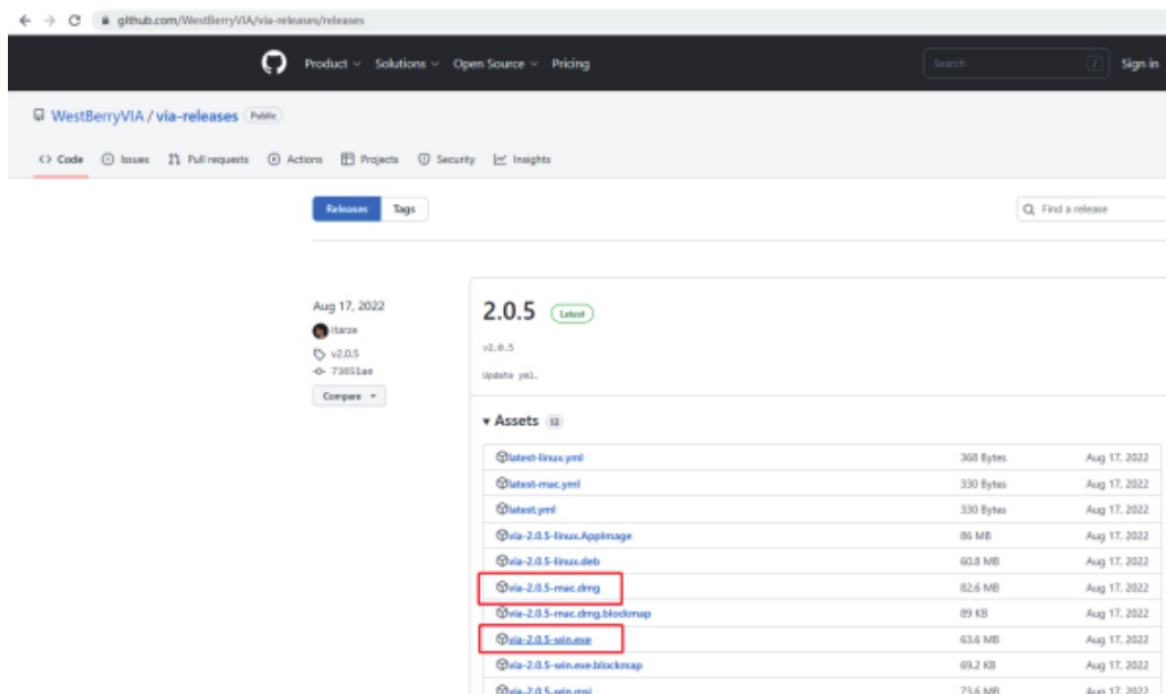
How do I configure my keyboard ?

Cidoo V65 support VIA firmware to remap the keys .VIA is a software that allows you to configure your keyboard.

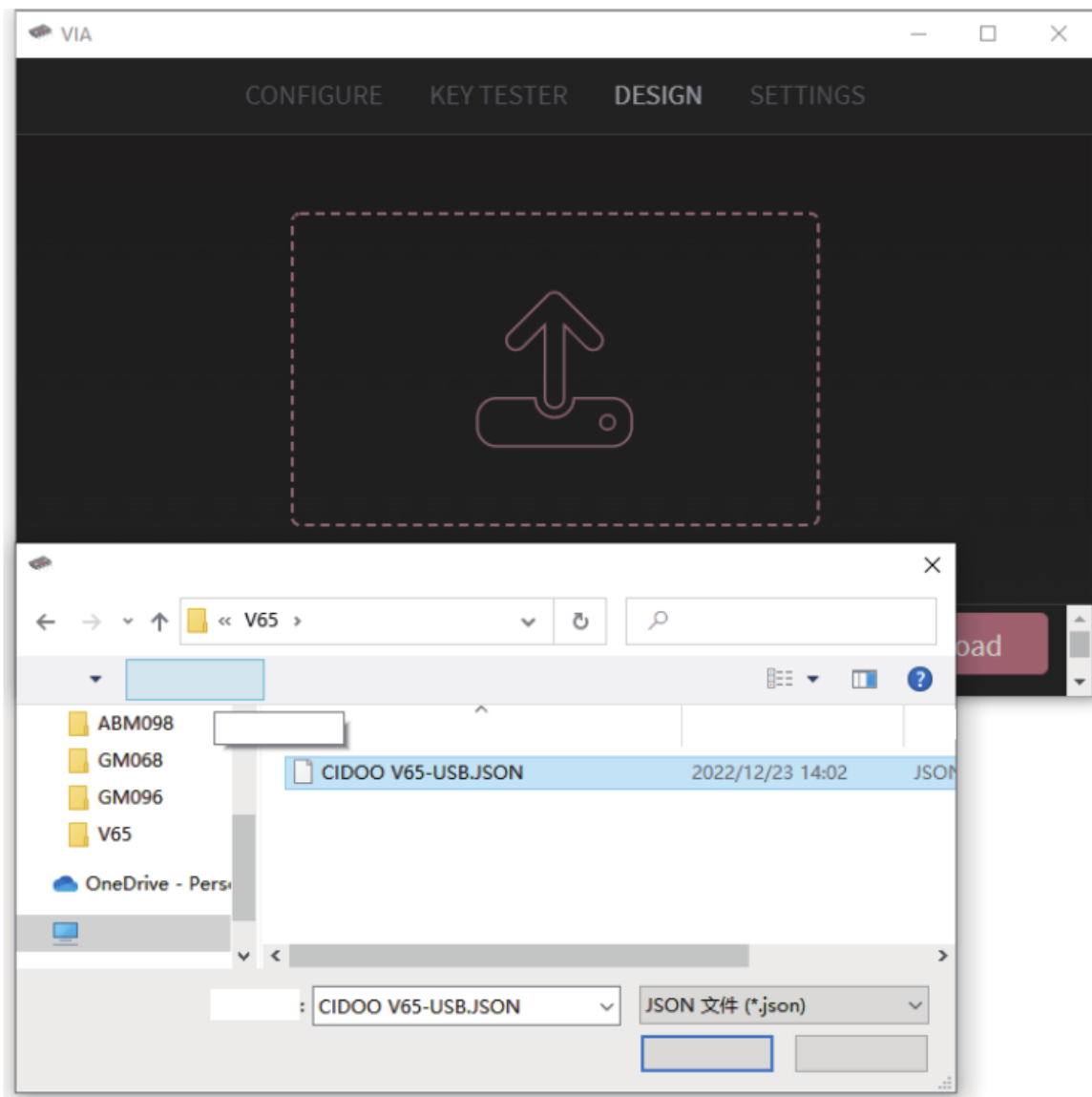
Note :Please make sure your keyboard has been correctly plugged in your computer device.

VIA setup instructions are here :

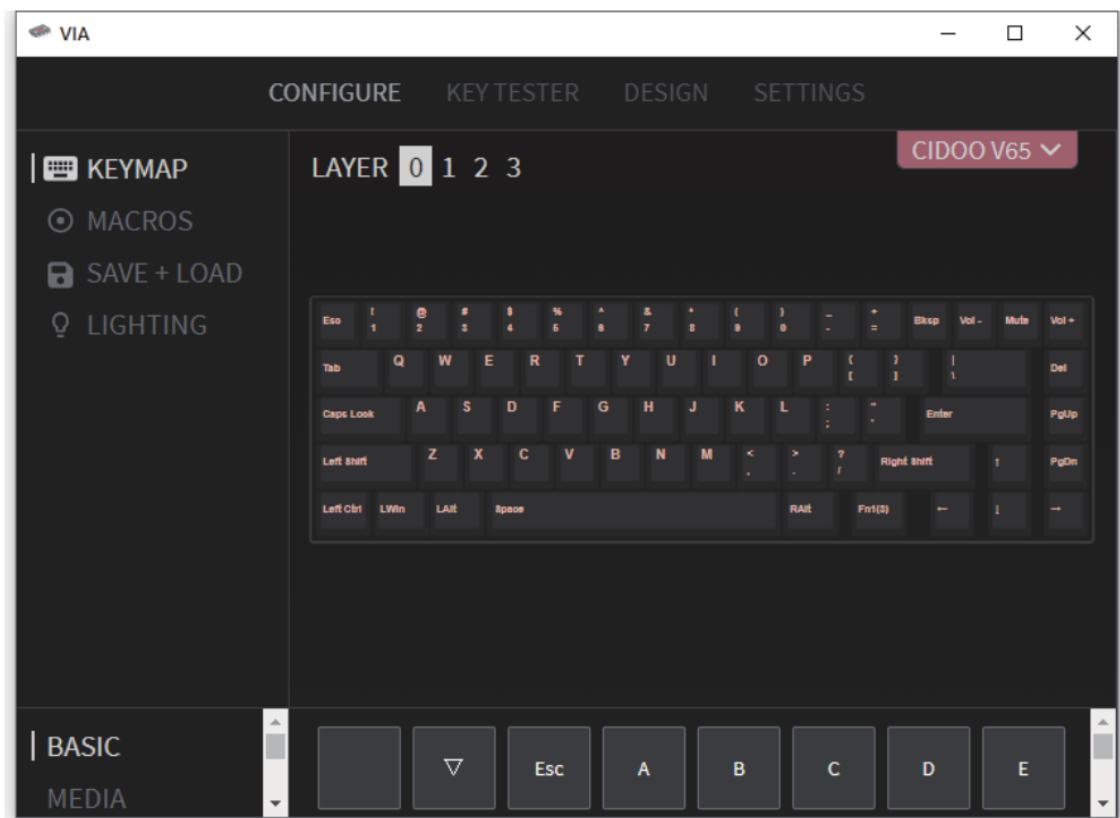
1. Please visit “<https://github.com/WestBerryVIA/via-releases/releases>” to download the latest VIA application for your computer’s OS here.



2. Download CIDOO V65 json file via WWW.CIDOOO.COM and load the file.



3. Installation is completed and VIA software connected successfully if show below picture.



If the VIA software cannot recognize your keyboard, please reach out our support to get the instruction.

VIA automatically detects your compatible keyboard if it's plugged in. Keyboard memory is persistent, which means that wherever you plug in keyboard, it remembers the settings.

On the top half of VIA software, choose one key by your mouse, and then select the key that you wanted on the bottom half of VIA software, and it was effected. Firstly switch to VIA software key tester table, there is not any background color before you press any keys, when you want to test

this key you have programmed, press it and the background color will change to red color means it works, otherwise it is not work.

See below for more information about configuration

Macros setting

CIDOO V65 does not have physical multimedia keys, you can remap the keys through the VIA software to achieve the function. CIDOO V65 is configured with 4 layers from 0 to 3 by default, and each individual key can have multiple functions. This is important for smaller keyboards, where there aren't enough physical keys to do all the functionality you need.

Special keys setting

Here you can remap the key to replace the special key to the key you want, to achieve the quick operation of the function.

CIDOO V65 VIA software provides many different RGB lighting effects by default. You can change the lighting brightness, speed, color and customize the lighting effect you want. You can also change the key to operate the lighting effect you set.

Others custom

CIDOO V65 provides other customized remap to other functional keys.

About Layers

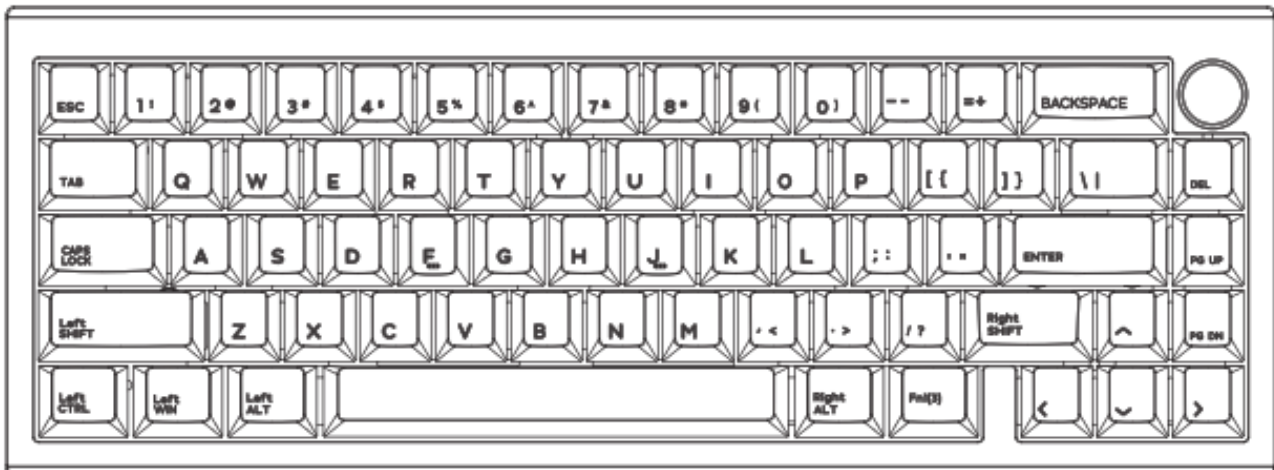
Layers allow you to configure your keyboard with more behaviours than its number of physical keys.

CIDOO V65 default customized 0-3 layer keyboard layout.

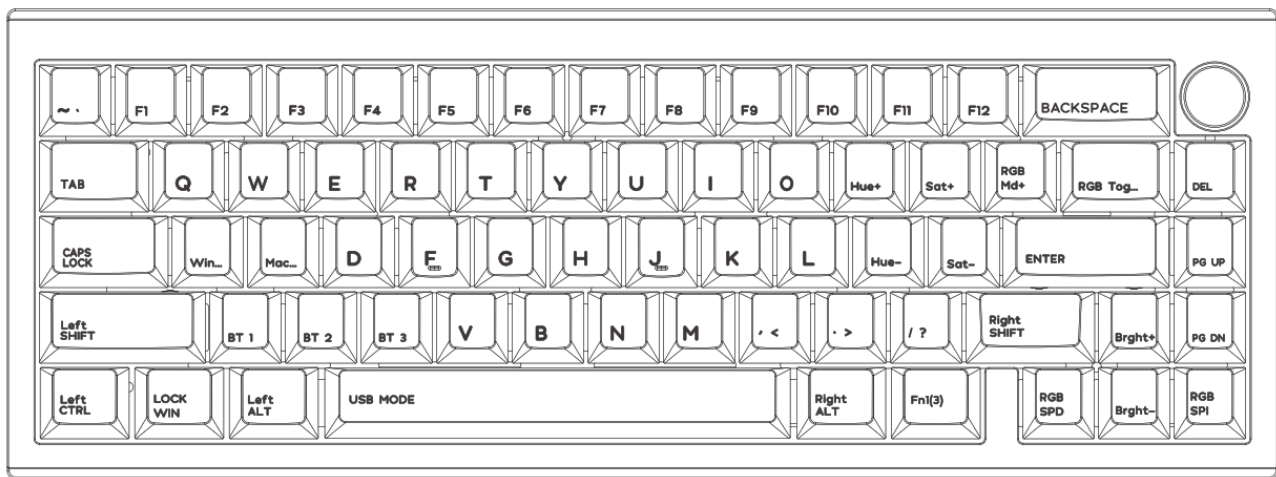
Layer 0: This layer will be activated when your keyboard connected to the Windows system.

Layer 0: This layer will be activated when your keyboard connected to the Mac system.

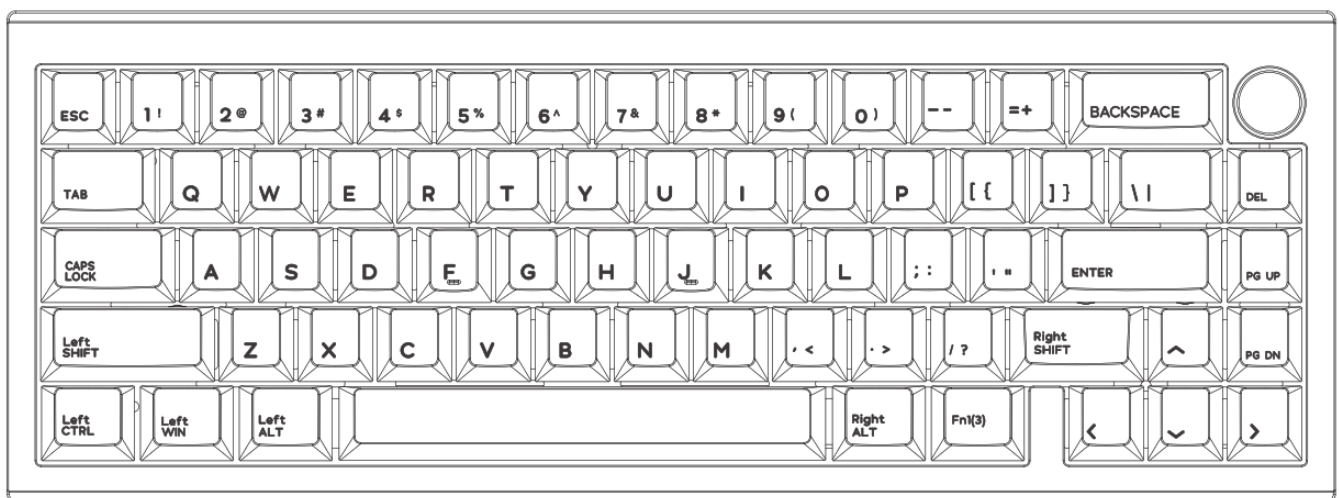
Left Alt=Left Option Left Win=Left Command Right Alt= Right Option



Layer 1: This layer will be activated when your keyboard's system toggle switched to Windows or Mac and press Fn1(3) key.



Layer 2: This layer will be activated when your keyboard's system toggle switched to Windows or Mac and key mapped any keys to MO(2) and then press it.



Layer 3: This layer will be activated when your keyboard's system toggle switched to Windows or Mac and key mapped any keys to MO(3) and then press it.


Key description

Hue+	Hue Increase	Sat+	Light Saturation+
RGB Md+	RGB Mode Next	RGB Tog...	RGB Toggle
Win...	Windows Mode	Mac...	Mac Mode
Hue-	Hue Decrease	Sat-	Light Saturation-
BT1	Bluetooth Device 1	BT2	Bluetooth Device 2
BT3	Bluetooth Device 3	Bright+	Back light Increase
Lock Win	Lock Windows Key	USB Mode	Switch to USB Mode
RGB SPD	RGB Speed Decrease	Bright-	Back light Decrease
RGB SPI	RGB Speed Increase	Fn1 (3)	Layer 1 will be activated when holding th is key
MO(2)	Layer 2 will be activated when holding thi s key	MO(3)	Layer 3 will be activated when holding th is key


Shenzhen Cidoo Technology Co.,Ltd

Add.: 104, Building 26, Changchun Garden, Changchun Road,
Gongming Community, Gongming Street, Guangming District,
Shenzhen City, GuangDong Province, China

TEL. +86- 755-33922600

Website: (CIDOOO )

Executive Standard: GB14081-2010


Copyrights and statements:  CIDOOO and other cidoo trademarks are owned by Cidoo company ,and may have applied for registration. All other trademarks are the property of their respective owners .and Cidoo is not responsible for any errors that may appear in this product.

All pictures shown are for illustration purpose only and the characteristics of the product may vary without prior notice.



<http://weixin.qq.com/r/Z0QcBALEml-lrUZn9xF1>

Documents / Resources

	EPOMAKER CIDOO V65 Mechanical Keyboard [pdf] User Manual CIDOO V65 Mechanical Keyboard, CIDOO V65, Mechanical Keyboard, Keyboard
---	---

References

-  [RGB](#) | [cidooo](#)
-  [Releases · WestBerryVIA/via-releases · GitHub](#)