



EPOMAKER 84EC Bluetooth Keyboard User Manual

[Home](#) » [EPOMAKER](#) » EPOMAKER 84EC Bluetooth Keyboard User Manual 

EPOMAKER

84EC(S) User Manual

Contents

1 Keyboard Function Illustrate

2 Keyboard configuration

3 Documents / Resources

4 Related Posts

Keyboard Function Illustrate

Special keys Function table

L FN +	ESC	Number Lock	Lock/Unlock the number keyboard and disable it; the Number keyboard is locked and the num lock indicator is off . Press the num lock key can't open the num lock indicator. Disable in program mode; Shutdown doesn't memory .
4. 04 E	ESC	Keyboard Lock	Lock/Unlock the keyboard; lock the keyboard, ESC indicator into the colorful breathing state; Shutdown doesn't memory.
	F8	Adjust trigger point	Adjustable Trigger point (high/low stage) Shutdown doesn't memory. Default in the fit trigger point.
	L-Ctrl	Caps/Ctrl exchange	Press 3 seconds for indicator flash 1 time. Achieve the exchange between “left Ctrl” and “Caps”. The shutdown doesn't memory

I R I- \ -	Win		Win Lock	Press 3 seconds for indicator flash 1 time, open Win Key ; indicator flash 2 times, lock Win key.Disable in Mac as Shutdown memory
	L-Alt		Win2Alt	Press 3 seconds for indicator flash 2 times, Match Mac OS(Achieve the exchange between “left Win” and “Left Alt”, “Right Alt be a place of Right Win”,”Menu be a place of Right Alt”). Press 3 seconds for indicator flash 1 times, match Win OS(key to return), Shutdown memory Note:1.1n wired mode and match Mac OS, that is needed waiting for some time. 2.If you want to open programming software, you need to match to Win OS(indicator flash 1 time), otherwise, you won’t be able to open the programming software.
	Q		Unit Time	4 gear to adjust the time required by the mouse cursor to move a cell.respectively, USB:8/6/4/2ms, Bluetooth:12/9/7/5 ins; corresponding indicator flash 1-4 times; Shutdown memory
	R		Unit Pixel	4 gear to adjust the number of pixels required by the
		=		mouse cursor the move a cell. respectively,2/3/4/5points; corresponding indicator flash 1-4 times; Shutdown memory
	ii		Repeat Rate	4 gear to adjust the speed of key hitting,respectively,x 1,x 2,x4,x 8,corresponding indicator flash 1-4 times;In USB/Bluetooth mode,x 1 restore normal to send code,response delay adjustment is invalid; Default in the first gear; Shutdown doesn’t memory
	1}		Response Delay	3 gear to adjust the keystroke response delay,respectively,500,300,100ms,corresponding . Indicator flash 1-3 times; Default in the first gear; Shutdown doesn’t memory
	De l		-M” Key	Press to exchange Office mode and Program mode, “M” Light turned on and off after 1 second in Office mode, and “M” Light turned on and off after 10 seconds at Program mode. Shutdown memory
	App		App Lock	Lock/Unlock App key; Disable in Mac OS; Shutdown doesn’t memory.
	I		luminance +	Regulate the luminance of the indicator
		I	luminance –	Regulate the luminance of the indicator
	L FN+	R FN		Lock right FN
+ a	L FN		Lock left FN	
X In program mode the keyboard can be set 2 layers (left FN layer and right FN layer)				

USB, PS/2 Interface settings

Press “Left FN /Right FN + Backspace” for 5 seconds, indicator flash 1 time to USB, indicator flash 2 times to auto-identify for USB, PS/2.and restart the keyboard. The default settings are set to USB.

Clear Key Counter

Press “Left FN+Right FN + Delete” for 5 seconds, the indicator flash, and the key counter will be clear.

Restore factory settings

Press “ESC + L-ctrl + Delete+ Right” for 5 seconds will restore factory settings, and restore factory settings will restart the keyboard.

Keyboard configuration

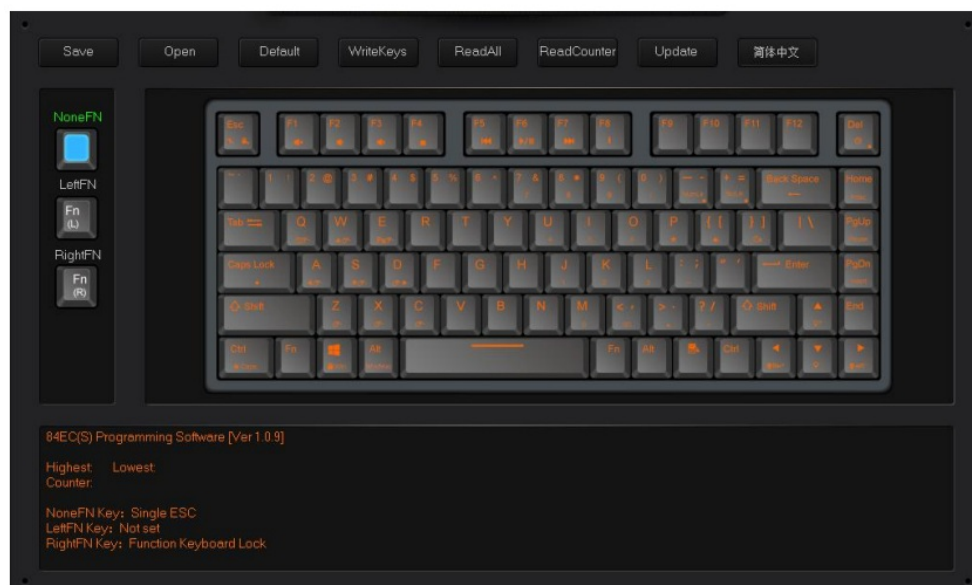
There are two modes for the keyboard, OFFICE mode, and Custom mode. OFFICE mode is also Standard mode, as for Custom mode, you can make different configurations to the keyboard, the details for how to configure and save under custom mode are below.

※ NOTE Press the “Save” on the main screen to save the configure when the configure be completed.

How to configure the keyboard:

Under OFFICE mode, press the “M” key on the top right corner, and the “M” light turns on, then goes into custom mode. And goes into the OFFICE mode in the opposite way. All keys on the keyboard are divided into no FN layer, left FN layer, and right FN layer, The left/right FN layer can output only when combine with the left/right FN. When finishing the setup of all keys in programming software, to save and synchronize the configuration with keys, single click the “WriteKeys” on the main screen. Single click the “Read configuration” on the main screen, it will read the standard configuration of OFFICE mode when under the OFFICE mode and read the custom configuration under custom mode.

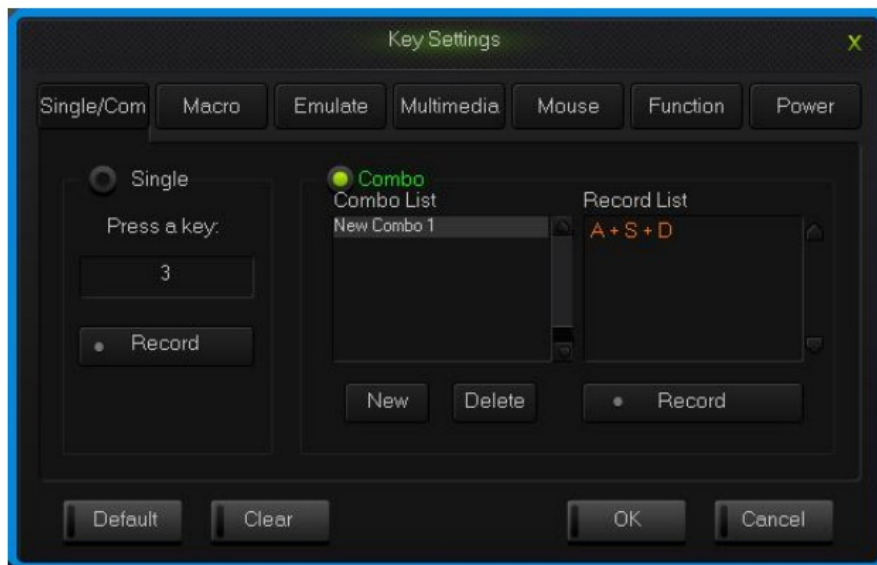
When the “M” light is on, the keyboard is under the custom mode, all the custom functions can be used.



Programming Software Main Interface

2.1 single key/ combine keys

1. With a single click on the key you need to configure, click “Uni/ combo” on the “KeySettings” surface.
2. Choose “Single” or “Combo”, single click “Record” to record the keys, combine keys can record six at most.
3. single click “OK”.



Single/Combo keys surface

2.2 Macro definition

The keyboard can be defined in the overall definition under a custom mode and shows a strong programmable feature.

What is Macro

Macro is the whole series of actions that you can specify the order to the keyboard. Accurately speaking, it's a series of key press and key releases, recording every single time of the key's press, release, and delay. Among these, it can automatically input when delayed, that is all the time between press and release can automatically input.

How to define a macro?

1. Choose the key you need to configure, and click "macro ";
2. Choose "New" on the left side of the appearing window;
3. Choose a new macro, select the style of output, and automatic delay in the macro edit on the right side, then click "Record and", type the keys that need to be defined on the keyboard and click "Stop Rec";
4. Single click "OK".

How to set up a delay

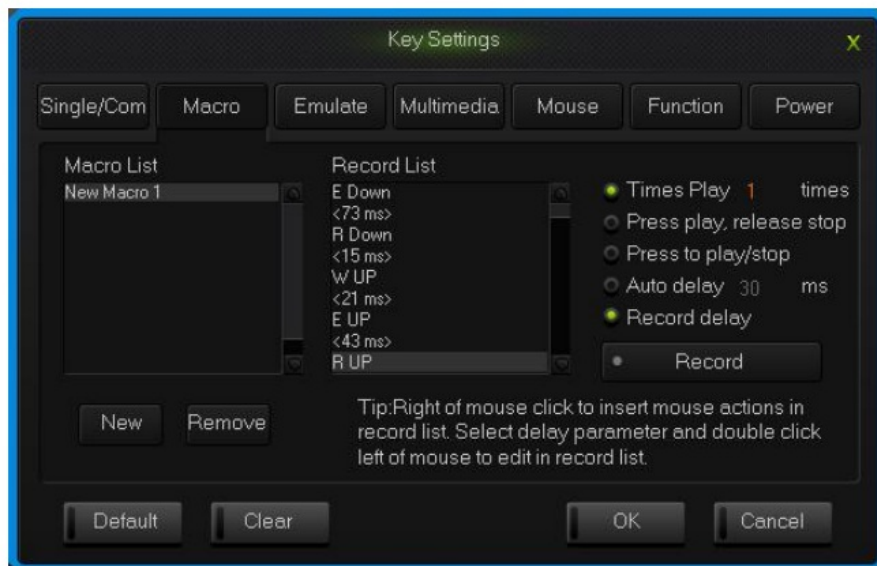
Delay is the time between the press and the release of keys. the keyboard has an automatic delay record and can modify delay time:

Set up automatic delay record: drive automatic records the time that typing actions need;

Modify delay time(50ms-60000ms, 1000ms=1s): after defining a macro, single click the delay time two keys already have, then the delay time will become to be editable and edit the delay time .sigle click the other area of the record list to exit the editable status.

How to insert mouse and delay

After recording a macro, right-click the key in the edit list, choose to operate insert mouse and delay.



Macro definition key interface

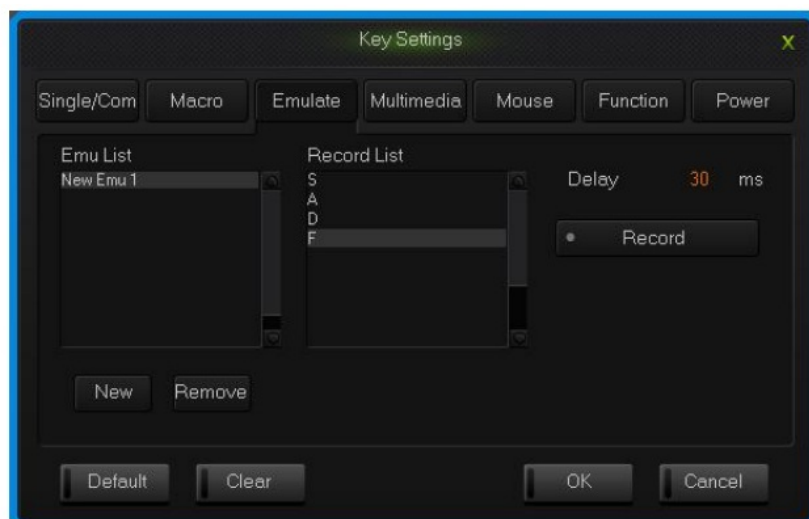
2.3 Simulate keystroke

What is simulating keystroke?

Simulate keystroke is the function that after you click the simulate key, the keyboard will simulate the keystroke at a fast speed, it ends when the key bounce, and it can also set up the speed of the keystroke.

How to set up a simulated keystroke?

1. Single click the key you need to configure, click "keystroke" in the "keys set up panel";
2. Choose "New" in the left side of the appearing window;
3. Choose a new-built keystroke, set up the keystroke time in the edit list on the right side, single click "Record", type in the keys that need define, then click "Stop Rec", simulate keystroke can record six at most;
4. Single click "OK".



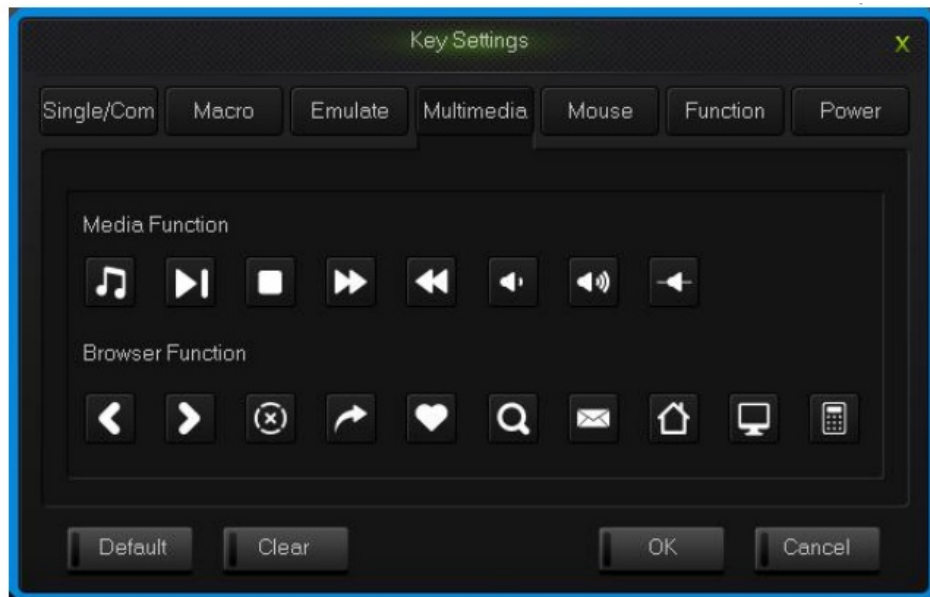
simulate key stroke interface

2.4 Multi-Media

The keyboard supports the usual function of multi-media, and custom multi-media simplifies the layout of the keyboard.

1. Single click the key you need to configure, single click "Multimedia";

2. Choose custom multi-media in the multi-media interface, then click “OK”.

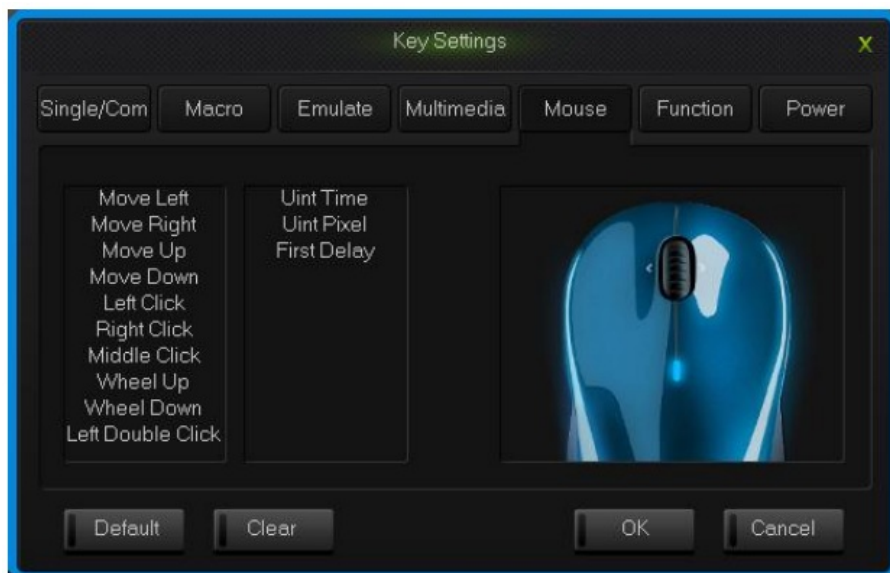


Multi-media interface

2.5 Mouse

The keyboard support Mouse. Unit Time refers to the time required by a mouse the cursor moves to a cell; Unit Pixel refers to the number of pixels that move a cell in the mouse cursor; First Delay refers to the interval between the mouse cursor moving the first cell to the second cell.

1. Single click the key you need to configure, click “Mouse” in the dialog box of “Key Settings” that pops out;
2. Choose custom mouse functions in the mouse panel, then click “OK”.

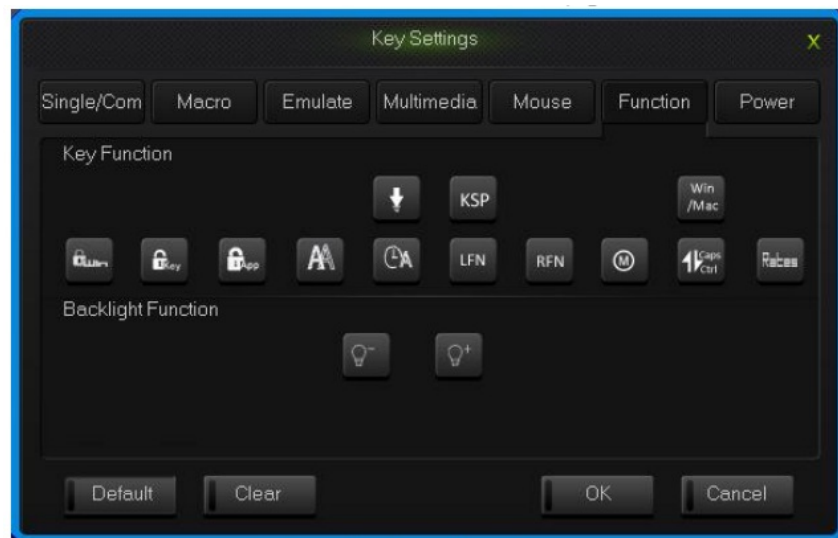


Mouse interface

2.6 Function Key

The control key is divided into key function and backlight function.

1. Single click the key you need to configure, click “Function” in the dialog box of “key Settings” that pops out;
2. Choose custom functions in the control key panel, then click “OK”.

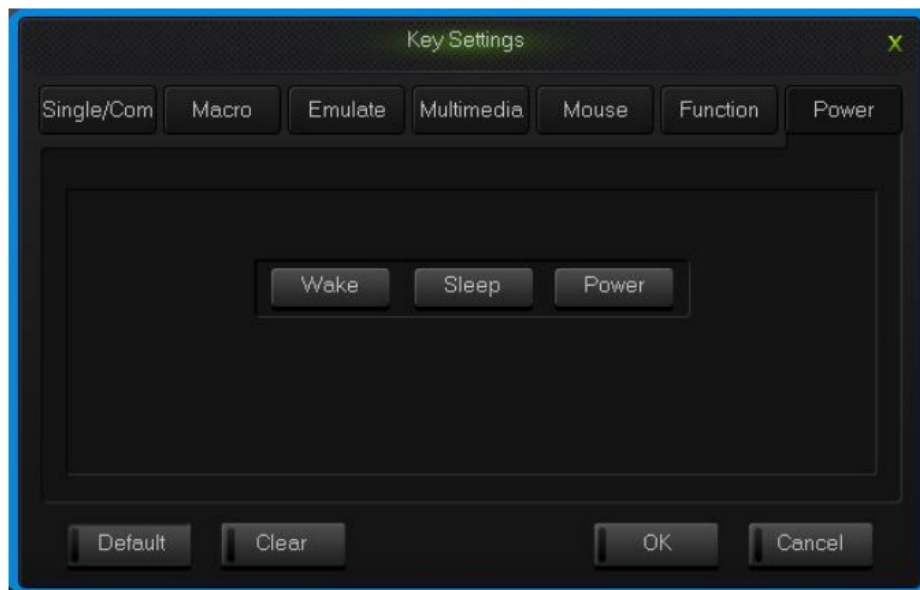


Function key interface

2.7 Power

The keyboard supports the power function.

1. Single click the key you need to configure, click “power” in the dialog box of “KeySettings” that pops out;
2. Choose custom functions in the power panel, then click “OK”.



Power interface

2.8 Empty configuration

There are two circumstances for an empty configuration, one is an empty single key configuration, and the other is empty of all the configured keys.

To empty a single key configuration, just single click the key and choose “Clear” in the settings window.

To empty all the configurations, single click “Clear” in the function bar on the main screen.

How to save and open configuration

Every configuration document corresponds to a kind of keystroke mode, so it will be more convenient for the users to configure the common programs of the keyboard. The configuration information includes key setup information and backlight setup information.

You can save those configurations that don't need in a short time on your PC and direct import them next time when needed. This can avoid set up repeated.

You can still import the documents saved on a PC when using another computer, The specific ways are below:

Open the configuration

1. Single click “open” at the function bar in the main screen, choose the catalog and the corresponding configuration in the dialog box of open configuration that pops out.
2. Single click “Open”.

Save configuration

1. Single click “Save” at the function bar in the main screen, choose the catalog, and type in the name of the configuration in the dialog box of the saved configuration that pops out.
2. Single click “Save”.

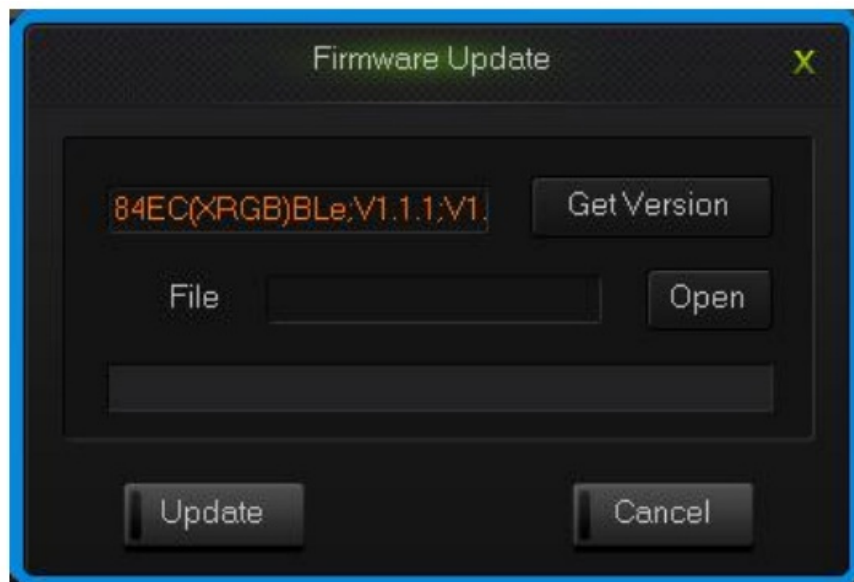
How to Get key usage times

Single click “Get Counter” at the function bar in the main screen, after reading the completion, the mouse moves to the corresponding button position, and the information box can see the number of times the button is hit.

How to upgrade keyboard firmware

Upgrade keyboard firmware in order to improve the performance of the keyboard and the function that is designed for user experiences.

1. Single click “Get Version” and can get the firmware’s name and version.
2. Single click “Open”, choose .bin document, and single click “Update”, then update the firmware of the keyboard with the tips.



upgrade keyboard firmware interface

Documents / Resources

1	2	3	4	5	6	7	8	9	0	11	12	13	14	15	16	17	18	19	20	21	22	23	24	25	26	27	28	29	30	31	32	33	34	35	36	37	38	39	40	41	42	43	44	45	46	47	48	49	50	51	52	53	54	55	56	57	58	59	60	61	62	63	64	65	66	67	68	69	70	71	72	73	74	75	76	77	78	79	80	81	82	83	84	85	86	87	88	89	90	91	92	93	94	95	96	97	98	99	100	101	102	103	104	105	106	107	108	109	110	111	112	113	114	115	116	117	118	119	120	121	122	123	124	125	126	127	128	129	130	131	132	133	134	135	136	137	138	139	140	141	142	143	144	145	146	147	148	149	150	151	152	153	154	155	156	157	158	159	160	161	162	163	164	165	166	167	168	169	170	171	172	173	174	175	176	177	178	179	180	181	182	183	184	185	186	187	188	189	190	191	192	193	194	195	196	197	198	199	200	201	202	203	204	205	206	207	208	209	210	211	212	213	214	215	216	217	218	219	220	221	222	223	224	225	226	227	228	229	230	231	232	233	234	235	236	237	238	239	240	241	242	243	244	245	246	247	248	249	250	251	252	253	254	255	256	257	258	259	260	261	262	263	264	265	266	267	268	269	270	271	272	273	274	275	276	277	278	279	280	281	282	283	284	285	286	287	288	289	290	291	292	293	294	295	296	297	298	299	300	301	302	303	304	305	306	307	308	309	310	311	312	313	314	315	316	317	318	319	320	321	322	323	324	325	326	327	328	329	330	331	332	333	334	335	336	337	338	339	340	341	342	343	344	345	346	347	348	349	350	351	352	353	354	355	356	357	358	359	360	361	362	363	364	365	366	367	368	369	370	371	372	373	374	375	376	377	378	379	380	381	382	383	384	385	386	387	388	389	390	391	392	393	394	395	396	397	398	399	400	401	402	403	404	405	406	407	408	409	410	411	412	413	414	415	416	417	418	419	420	421	422	423	424	425	426	427	428	429	430	431	432	433	434	435	436	437	438	439	440	441	442	443	444	445	446	447	448	449	450	451	452	453	454	455	456	457	458	459	460	461	462	463	464	465	466	467	468	469	470	471	472	473	474	475	476	477	478	479	480	481	482	483	484	485	486	487	488	489	490	491	492	493	494	495	496	497	498	499	500	501	502	503	504	505	506	507	508	509	510	511	512	513	514	515	516	517	518	519	520	521	522	523	524	525	526	527	528	529	530	531	532	533	534	535	536	537	538	539	540	541	542	543	544	545	546	547	548	549	550	551	552	553	554	555	556	557	558	559	560	561	562	563	564	565	566	567	568	569	570	571	572	573	574	575	576	577	578	579	580	581	582	583	584	585	586	587	588	589	590	591	592	593	594	595	596	597	598	599	600	601	602	603	604	605	606	607	608	609	610	611	612	613	614	615	616	617	618	619	620	621	622	623	624	625	626	627	628	629	630	631	632	633	634	635	636	637	638	639	640	641	642	643	644	645	646	647	648	649	650	651	652	653	654	655	656	657	658	659	660	661	662	663	664	665	666	667	668	669	670	671	672	673	674	675	676	677	678	679	680	681	682	683	684	685	686	687	688	689	690	691	692	693	694	695	696	697	698	699	700	701	702	703	704	705	706	707	708	709	710	711	712	713	714	715	716	717	718	719	720	721	722	723	724	725	726	727	728	729	730	731	732	733	734	735	736	737	738	739	740	741	742	743	744	745	746	747	748	749	750	751	752	753	754	755	756	757	758	759	760	761	762	763	764	765	766	767	768	769	770	771	772	773	774	775	776	777	778	779	780	781	782	783	784	785	786	787	788	789	790	791	792	793	794	795	796	797	798	799	800	801	802	803	804	805	806	807	808	809	810	811	812	813	814	815	816	817	818	819	820	821	822	823	824	825	826	827	828	829	830	831	832	833	834	835	836	837	838	839	840	841	842	843	844	845	846	847	848	849	850	851	852	853	854	855	856	857	858	859	860	861	862	863	864	865	866	867	868	869	870	871	872	873	874	875	876	877	878	879	880	881	882	883	884	885	886	887	888	889	890	891	892	893	894	895	896	897	898	899	900	901	902	903	904	905	906	907	908	909	910	911	912	913	914	915	916	917	918	919	920	921	922	923	924	925	926	927	928	929	930	931	932	933	934	935	936	937	938	939	940	941	942	943	944	945	946	947	948	949	950	951	952	953	954	955	956	957	958	959	960	961	962	963	964	965	966	967	968	969	970	971	972	973	974	975	976	977	978	979	980	981	982	983	984	985	986	987	988	989	990	991	992	993	994	995	996	997	998	999	1000
---	---	---	---	---	---	---	---	---	---	----	----	----	----	----	----	----	----	----	----	----	----	----	----	----	----	----	----	----	----	----	----	----	----	----	----	----	----	----	----	----	----	----	----	----	----	----	----	----	----	----	----	----	----	----	----	----	----	----	----	----	----	----	----	----	----	----	----	----	----	----	----	----	----	----	----	----	----	----	----	----	----	----	----	----	----	----	----	----	----	----	----	----	----	----	----	----	----	----	-----	-----	-----	-----	-----	-----	-----	-----	-----	-----	-----	-----	-----	-----	-----	-----	-----	-----	-----	-----	-----	-----	-----	-----	-----	-----	-----	-----	-----	-----	-----	-----	-----	-----	-----	-----	-----	-----	-----	-----	-----	-----	-----	-----	-----	-----	-----	-----	-----	-----	-----	-----	-----	-----	-----	-----	-----	-----	-----	-----	-----	-----	-----	-----	-----	-----	-----	-----	-----	-----	-----	-----	-----	-----	-----	-----	-----	-----	-----	-----	-----	-----	-----	-----	-----	-----	-----	-----	-----	-----	-----	-----	-----	-----	-----	-----	-----	-----	-----	-----	-----	-----	-----	-----	-----	-----	-----	-----	-----	-----	-----	-----	-----	-----	-----	-----	-----	-----	-----	-----	-----	-----	-----	-----	-----	-----	-----	-----	-----	-----	-----	-----	-----	-----	-----	-----	-----	-----	-----	-----	-----	-----	-----	-----	-----	-----	-----	-----	-----	-----	-----	-----	-----	-----	-----	-----	-----	-----	-----	-----	-----	-----	-----	-----	-----	-----	-----	-----	-----	-----	-----	-----	-----	-----	-----	-----	-----	-----	-----	-----	-----	-----	-----	-----	-----	-----	-----	-----	-----	-----	-----	-----	-----	-----	-----	-----	-----	-----	-----	-----	-----	-----	-----	-----	-----	-----	-----	-----	-----	-----	-----	-----	-----	-----	-----	-----	-----	-----	-----	-----	-----	-----	-----	-----	-----	-----	-----	-----	-----	-----	-----	-----	-----	-----	-----	-----	-----	-----	-----	-----	-----	-----	-----	-----	-----	-----	-----	-----	-----	-----	-----	-----	-----	-----	-----	-----	-----	-----	-----	-----	-----	-----	-----	-----	-----	-----	-----	-----	-----	-----	-----	-----	-----	-----	-----	-----	-----	-----	-----	-----	-----	-----	-----	-----	-----	-----	-----	-----	-----	-----	-----	-----	-----	-----	-----	-----	-----	-----	-----	-----	-----	-----	-----	-----	-----	-----	-----	-----	-----	-----	-----	-----	-----	-----	-----	-----	-----	-----	-----	-----	-----	-----	-----	-----	-----	-----	-----	-----	-----	-----	-----	-----	-----	-----	-----	-----	-----	-----	-----	-----	-----	-----	-----	-----	-----	-----	-----	-----	-----	-----	-----	-----	-----	-----	-----	-----	-----	-----	-----	-----	-----	-----	-----	-----	-----	-----	-----	-----	-----	-----	-----	-----	-----	-----	-----	-----	-----	-----	-----	-----	-----	-----	-----	-----	-----	-----	-----	-----	-----	-----	-----	-----	-----	-----	-----	-----	-----	-----	-----	-----	-----	-----	-----	-----	-----	-----	-----	-----	-----	-----	-----	-----	-----	-----	-----	-----	-----	-----	-----	-----	-----	-----	-----	-----	-----	-----	-----	-----	-----	-----	-----	-----	-----	-----	-----	-----	-----	-----	-----	-----	-----	-----	-----	-----	-----	-----	-----	-----	-----	-----	-----	-----	-----	-----	-----	-----	-----	-----	-----	-----	-----	-----	-----	-----	-----	-----	-----	-----	-----	-----	-----	-----	-----	-----	-----	-----	-----	-----	-----	-----	-----	-----	-----	-----	-----	-----	-----	-----	-----	-----	-----	-----	-----	-----	-----	-----	-----	-----	-----	-----	-----	-----	-----	-----	-----	-----	-----	-----	-----	-----	-----	-----	-----	-----	-----	-----	-----	-----	-----	-----	-----	-----	-----	-----	-----	-----	-----	-----	-----	-----	-----	-----	-----	-----	-----	-----	-----	-----	-----	-----	-----	-----	-----	-----	-----	-----	-----	-----	-----	-----	-----	-----	-----	-----	-----	-----	-----	-----	-----	-----	-----	-----	-----	-----	-----	-----	-----	-----	-----	-----	-----	-----	-----	-----	-----	-----	-----	-----	-----	-----	-----	-----	-----	-----	-----	-----	-----	-----	-----	-----	-----	-----	-----	-----	-----	-----	-----	-----	-----	-----	-----	-----	-----	-----	-----	-----	-----	-----	-----	-----	-----	-----	-----	-----	-----	-----	-----	-----	-----	-----	-----	-----	-----	-----	-----	-----	-----	-----	-----	-----	-----	-----	-----	-----	-----	-----	-----	-----	-----	-----	-----	-----	-----	-----	-----	-----	-----	-----	-----	-----	-----	-----	-----	-----	-----	-----	-----	-----	-----	-----	-----	-----	-----	-----	-----	-----	-----	-----	-----	-----	-----	-----	-----	-----	-----	-----	-----	-----	-----	-----	-----	-----	-----	-----	-----	-----	-----	-----	-----	-----	-----	-----	-----	-----	-----	-----	-----	-----	-----	-----	-----	-----	-----	-----	-----	-----	-----	-----	-----	-----	-----	-----	-----	-----	-----	-----	-----	-----	-----	-----	-----	-----	-----	-----	-----	-----	-----	-----	-----	-----	-----	-----	-----	-----	-----	-----	-----	-----	-----	-----	-----	-----	-----	-----	-----	-----	-----	-----	-----	-----	-----	-----	-----	-----	-----	-----	-----	-----	-----	-----	-----	-----	-----	-----	-----	-----	-----	-----	-----	-----	-----	-----	-----	-----	-----	-----	-----	-----	-----	-----	-----	-----	-----	-----	-----	-----	-----	-----	-----	-----	-----	-----	-----	-----	-----	-----	-----	-----	-----	-----	-----	-----	-----	-----	-----	-----	-----	-----	-----	-----	-----	-----	-----	-----	-----	-----	-----	-----	-----	-----	-----	-----	-----	-----	-----	-----	-----	-----	-----	-----	-----	-----	-----	-----	-----	-----	-----	-----	-----	-----	-----	-----	-----	-----	-----	-----	-----	-----	-----	-----	-----	-----	-----	-----	-----	-----	-----	-----	-----	-----	-----	-----	-----	-----	-----	-----	-----	-----	-----	-----	-----	-----	-----	-----	-----	-----	-----	-----	-----	-----	-----	-----	-----	-----	-----	-----	-----	-----	-----	-----	-----	-----	-----	-----	-----	-----	-----	-----	-----	-----	------

[EPOMAKER 84EC Bluetooth Keyboard](#) [pdf] User Manual

84EC Bluetooth Keyboard, 84EC, Bluetooth Keyboard, Keyboard