



EPOMAKER 40 Keyboard User Guide

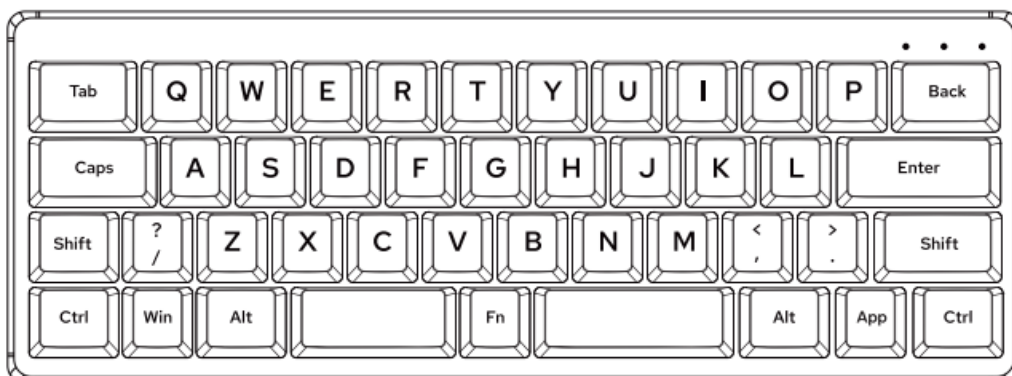
[Home](#) » [EPOMAKER](#) » EPOMAKER 40 Keyboard User Guide 

Contents

- [1 EPOMAKER 40 Keyboard](#)
- [2 FUNCTION KEY COMBINATIONS](#)
- [3 HOW TO USE VIA](#)
- [4 SPECS](#)
- [5 REPLACING KEYCAPS AND SWITCHES](#)
- [6 TECHNICAL ASSISTANCE](#)
- [7 WARRANTY](#)
- [8 Documents / Resources](#)
 - [8.1 References](#)



EPOMAKER 40 Keyboard



40% Hot Swappable RGB 2.4Ghz/Bluetooth 5.0/Wired Mechanical Gaming Keyboard

Should you require more assistance please email us at support@epomaker.com

Made in China

Manufacturer: Shenzhen Changyun Technology Co., Ltd. Address: Sixth Floor, Kai Daer Building, No.168 Tongsha Road, Xiii Street, Nanshan District, Shenzhen, Guangdong, CN Email: support@epomaker.com
Web: www.epomaker.com



EC REP

APEX CE SPECIALISTS GMBH

Habichtweg 1 41468 Neuss Germany

Contact Wells Van E-mail: info@apex-ce.com

UK REP

APEX CE SPECIALISTS LIMITED

89 Princess Street, Mancheste, M1 4HT, UK

Contact Wells Van E-mail: info@apex-ce.com

FUNCTION KEY COMBINATIONS

FN + L_CTRL (HOLD 3S)	Reset the Keyboard	FN + K	- _
FN + TAB	Esc	FN + L	= +
FN + / ?	~	FN + . >	↑
FN + Q	1 !	FN + R_ALT	←
FN + W	2 @	FN + APP	↓
FN + E	3 #	FN + R_CTRL	→
FN + R	4 \$	FN + A	Long Press to Pair Device BT1
FN + T	5 %	FN + S	Long Press to Pair Device BT2
FN + Y	6 ^	FN + D	Long Press to Pair Device BT3
FN + U	7 &	FN + F	Long Press to connect via 2.4G mode
FN + I	8 *	FN + R_SHIFT	Toggle Between Window/Mac Mode
FN + O	9 (FN + L_SPACEBAR	Check Battery
FN + P	0)	FN + WIN	Lock/unlock Win & App key

FN + ENTER	Turn On/Off Backlights	FN + C	Backlights Speed +
FN + Z	Toggle Backlight RGB Effects	FN + B	Backlights Hue -
FN + N	Backlights Brightness -	FN + M	Backlights Hue +
FN + H	Backlights Brightness +	FN + G	Backlights Sat +
FN + X	Backlights Speed -	FN + J	Backlights Sat -

PAIRING BLUETOOTH

Toggle the switch to the left, make sure that the keyboard is under the Bluetooth mode:

1. Hold Fn+A/S/D for 3-5 seconds till the Right Indicator flashes fast, the keyboard is ready to pair.
2. Turn on your Bluetooth device and find "EPOMAKER TH40", then connect. When the keyboard is connected to the Bluetooth device, the indicator stops flashing and the connection is done.
3. Press Fn+ A/S/D to toggle between the Bluetooth devices 1/2/3 .

PAIRING WIRELESS 2.4GHZ

Toggle the switch to the right, make sure that the keyboard is under the 2.4G mode:

Insert the 2.4G dongle to your device. When the Right Indicator stops blinking and the connection is done.

To reconnect via 2.4G mode if it is disconnected, long press Fn+F till the Right Indicator blinks fast and insert the receiver to your device.

WIRED MODE

Toggle the switch in the middle and plug the keyboard.

Note: The battery charges under either wireless or wired mode, as long as the keyboard is plugged.

CHECK BATTERY

Hold Fn+L_Spacebar, the keys from Q to P lights up to show the battery percentage; for example, if the keys from Q to Y light up when holding Fn+L_Spacebar, it means that the battery life is currently 60%; if keys of Q-P light up, battery life is 100%.

INDICATOR

Left: Capslock

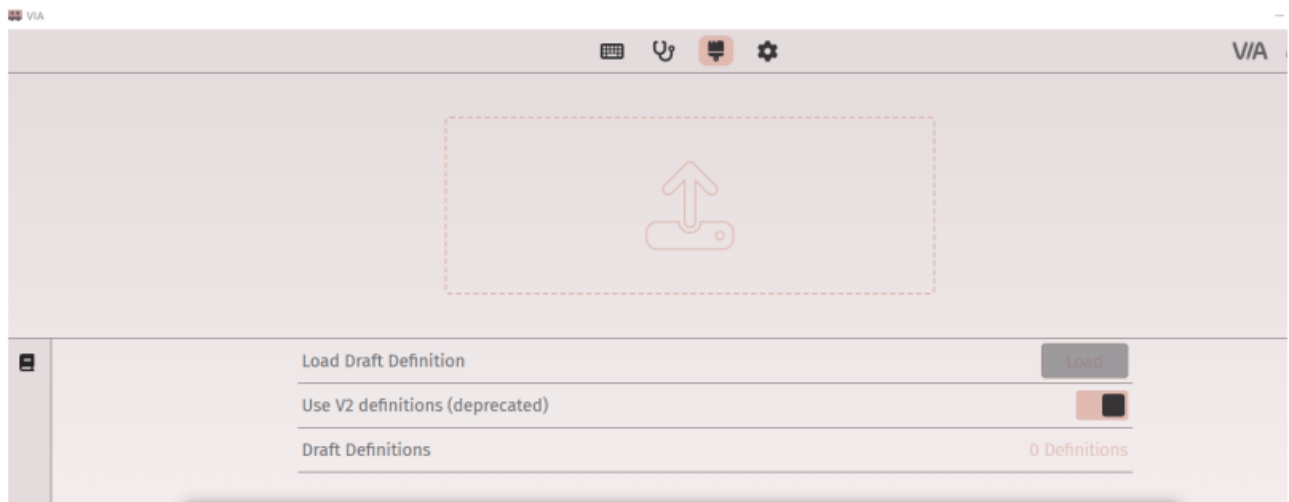
Middle: Win lock

Right: Connection Indicator

Win/Mac OS Mode: Press Fn+R_Shift, when the LEFT indicator flashes one time, the keyboard is in Win mode; three times, Mac mode.

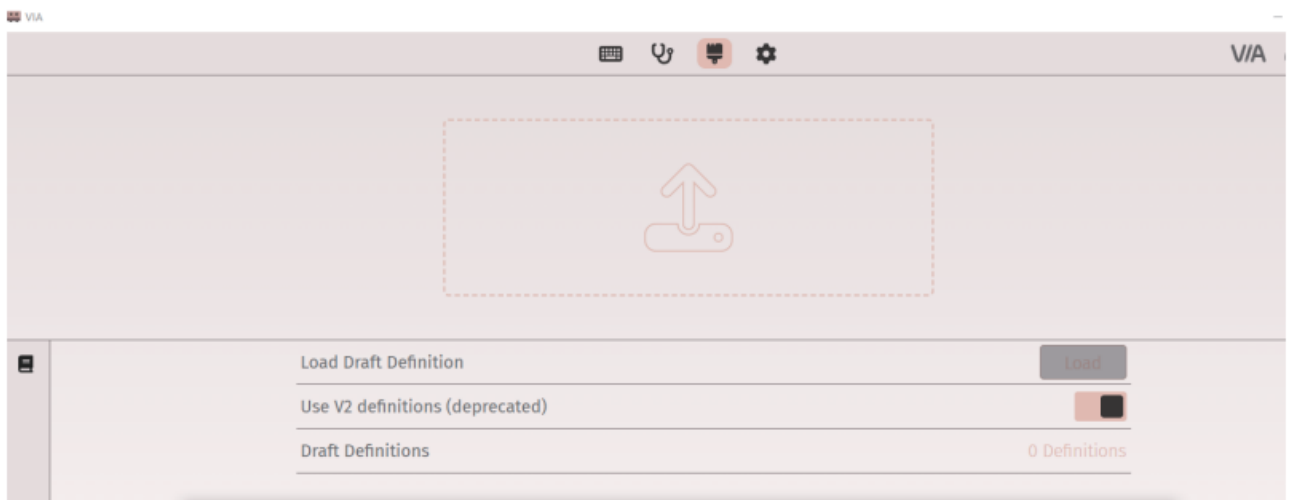
HOW TO USE VIA

1. Please visit "<https://github.com/WestBerryVIA/via-releases/releases>" to download the latest VIA application for your computer's OS. Turn on the button of "Use V2 definitions (deprecated)"



2. Import the JSON File to VIA

If the keyboard is under the wired mode: download Epomaker TH40 USB json file via <https://epomaker.com/blogs/via-json/epomaker-th40-usb-via-json> and load the file; If the keyboard is under 2.4G mode, download Epomaker TH40 2.4G json file via <https://epomaker.com/blogs/via-json/epomaker-th40-24g-via-json> and load the file.



3. When the loading is completed, the “Configure” Tab displays the layout and programmable functions.



SPECS

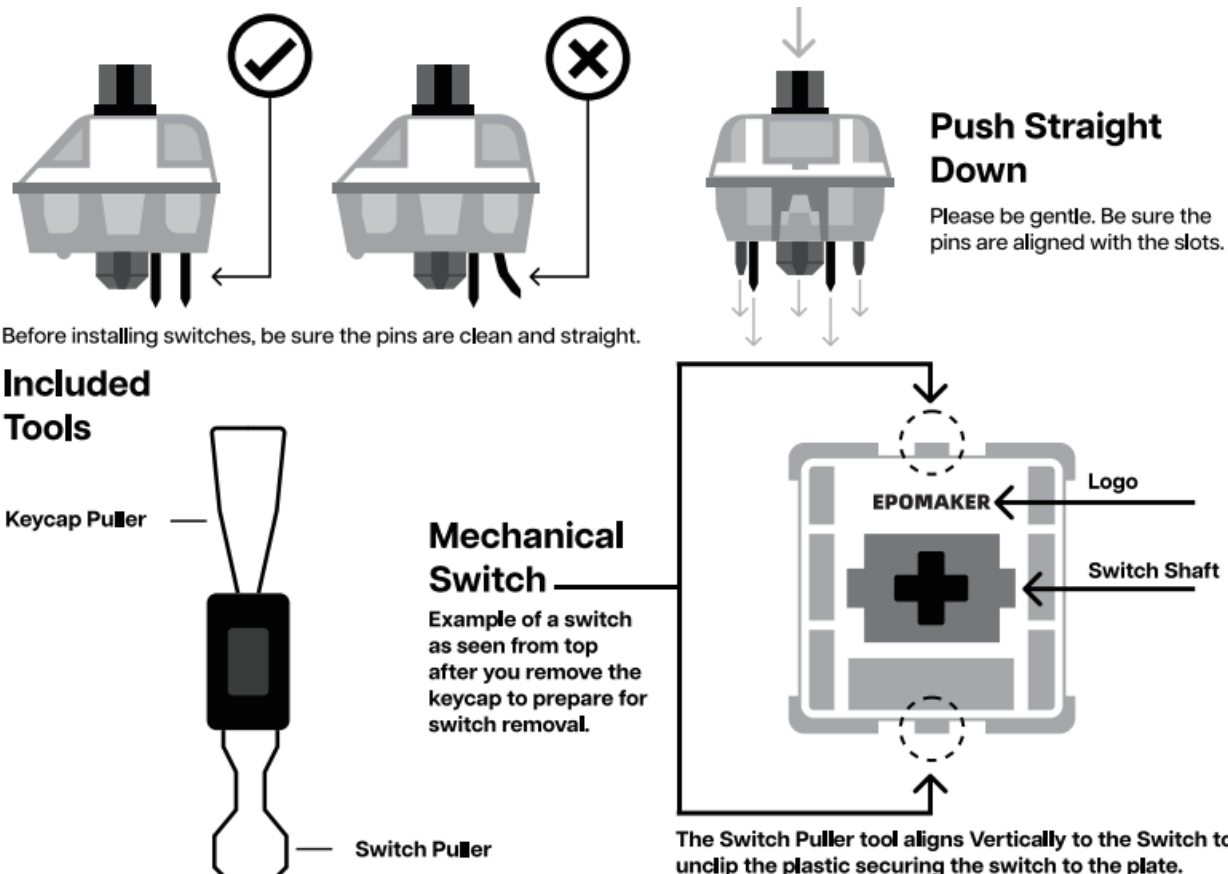
MODEL:	EPOMAKER TH40
KEYS AMOUNT:	44 Keys
MOUNTING TYPE:	Gasket
CASE MATERIAL:	ABS Plastic
PLATE MATERIAL:	Flex-cut PC
STABILIZER TYPE:	Plate-mounted
PCB TYPE:	3/5-pin Hotswap PCB
CONNECTIVITY:	Type-C Wired, Bluetooth, 2.4G Bluetooth
ANTI-GHOST KEY:	NKRO
LED DIRECTION:	South-facing
POLLING RATE:	1000hz under Wired and 2.4G Mode; 125hz under Bluetooth Mode
BATTERY CAPACITY:	2000mAh
COMPATIBILITY:	WINDOWS/MAC
DIMENSION:	258 x 97 x 35 mm
WEIGHT:	Around 0.5 kg

REPLACING KEYCAPS AND SWITCHES

For a full guide on how to remove keycaps and switches scan the QR Code or type in your browser:

<https://epomaker.com/blogs/guides/diy-guide-how-to-remove-and-replace-your-mechanical-keyboard-switches>





Remove Switches

1. Grab your Switch Removal Tool and align the gripping teeth vertically (on the Y-Axis) at the center of the switch, as shown in the example graphic above.
2. Grab the switch with the Switch Puller and apply pressure until the switch releases itself from the plate.
3. Using firm but gentle force pull the switch rNJay from the keyboard using a vertical motion.

Install Switches

1. Check that all the switch metallic pins are perfectly straight and clean.
2. Align the switch vertically to have the Gateron logo facing north. The pins should align themselves to the keyboard PBC.
3. Press the switch down until you hear a click. This means your switch clips have attached themselves to the keyboard plate.
4. Inspect the switch to ensure it's properly attached to your keyboard, and test it.

Note: If the key doesn't work its possible you may have bent one of the switches while installing it. Pull the switch out and repeat the process.

Pins may be damaged beyond repair and need replacement if this process is not done correctly. Never apply excessive force when replacing keycaps or switches. If you cannot remove or install keycaps or switches please contact customer service as soon as possible to avoid damage to the keyboard due to operating errors.

TECHNICAL ASSISTANCE

For technical assistance, please email to support@epomaker.com with your purchase order number and a detailed description of your issue.

We normally respond to enquiries within 24 hours. If you purchased your keyboard from a distributor or not from any official store of Epomaker, please contact them directly for any additional help.

COMMUNITY FORUMS

Join our community and learn together with other keyboard enthusiasts.

- <https://discord.gg/2q3Z7C2>
- <https://www.reddit.com/r/EpomakerKeyboard/>

WARRANTY

EPOMAKER's Warranty covers any factory defects that might affect the proper functionality of your purchase. It doesn't cover any damage that may occur from normal wear and tear. If your product is defective we will send you a replacement unit. Replacement units might require you to send the defective unit back to Epomaker.

We provide a 1 year warranty for our products when bought from our website (EPOMAKER.com). Your item will not be covered by your 1 year warranty if the inspection shows any sign of modification or changes unsupported by the original product, these include: Changing internal components, Assembling and reassembling the product, Replacing Batteries, etc.

We will ONLY cover the item if it is bought from our official stores. You do not have a warranty with us if you bought the item from another reseller or likewise. Please contact the store that you bought your product from to resolve issues.

Documents / Resources



[EPOMAKER 40 Keyboard](#) [pdf] User Guide
40 Keyboard, 40, Keyboard

References

- [User Manual](#)

Manuals+, Privacy Policy

This website is an independent publication and is neither affiliated with nor endorsed by any of the trademark owners. The "Bluetooth®" word mark and logos are registered trademarks owned by Bluetooth SIG, Inc. The "Wi-Fi®" word mark and logos are registered trademarks owned by the Wi-Fi Alliance. Any use of these marks on this website does not imply any affiliation with or endorsement.