



# EPIC OFFICE P152 Touch Keypad Function Guub Intelligent Lock User Manual

[Home](#) » [EPIC OFFICE](#) » EPIC OFFICE P152 Touch Keypad Function Guub Intelligent Lock User Manual 



**EPIC OFFICE**

**Guub**

GUUB TECH (CHINA)

**P152 Touch Keypad Function Guub Intelligent Lock  
User Manual**

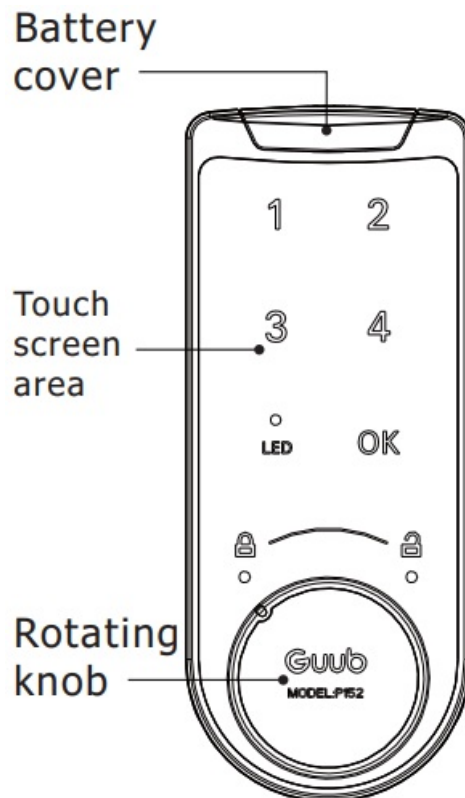


## Contents

- 1 Introduction of P152
- 2 Battery Installation
- 3 How to use Private function
- 4 How to use Public function
- 5 Alarm Function
- 6 Change Battery
- 7 Trouble Shooting
- 8 Documents / Resources
  - 8.1 References
- 9 Related Posts

## Introduction of P152

### 5 keypads intelligent lock



- User code is 1-8 digits long, billions of possible combinations.
- User code is set and changed by user, automatic save when power off, never lost and garbled.
- Immediate unlock once enter user code, thoroughly give up keys and accessories, safe and convenient.
- Battery can be used in one year, automatic low battery warning.
- Automatic alarm four times against malicious breaking user codes.

#### **Applications: Wood or Metal locker , wardrobe**

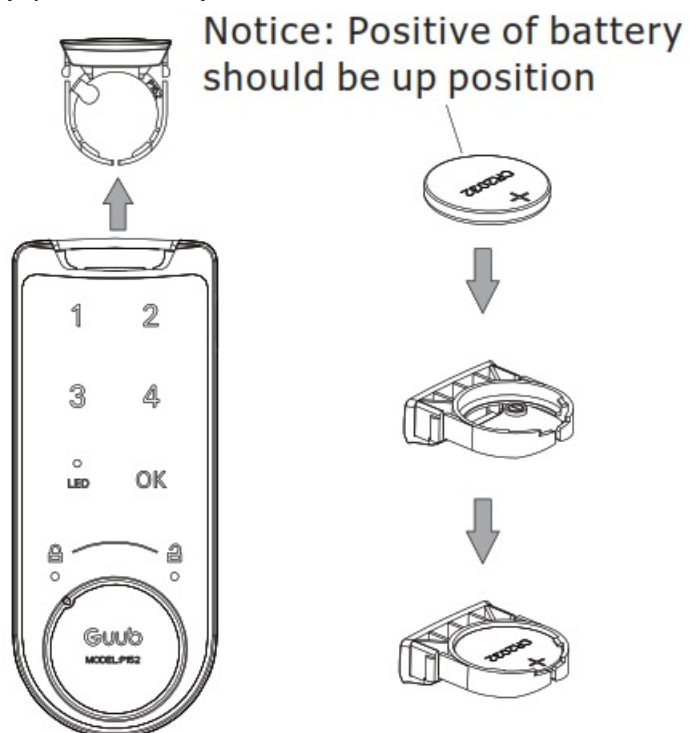
**Function options:** Private function or Public function

**Private function:** A user code can be used for long term, suitable for personal applications.

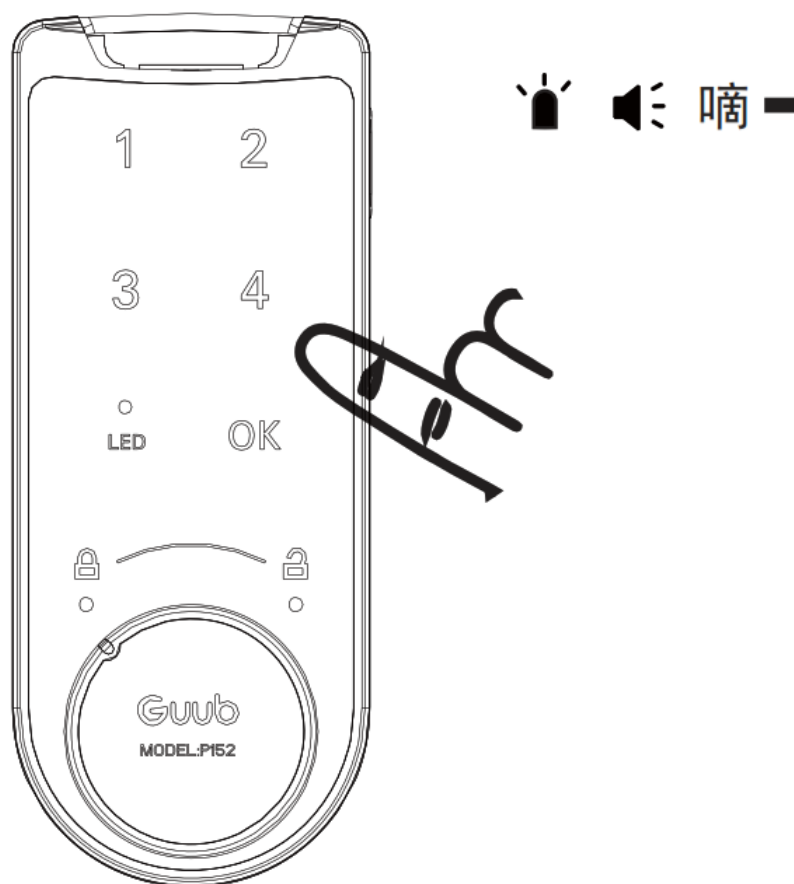
**Public function:** Enter a user code to lock and unlock once only and then user code will be override, suitable for public applications.

## Battery Installation

1. Push up the cover of battery, put in a battery



2. Sounds "DEE" will be heard and LED indicator lights up after pressing any numbers

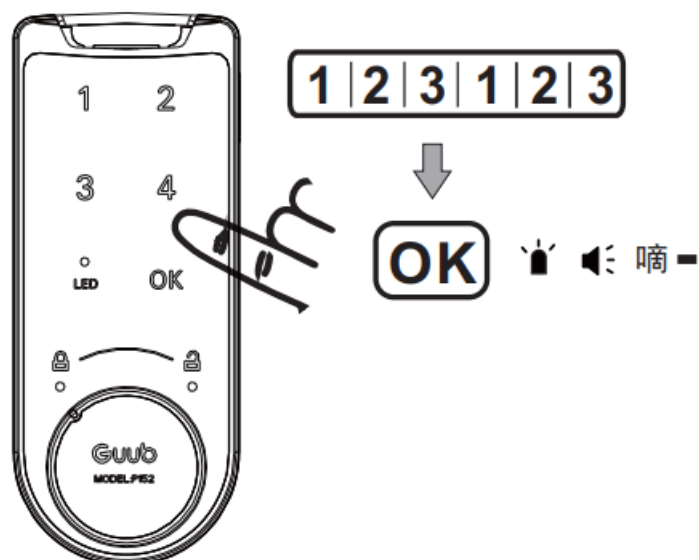



## How to use Private function

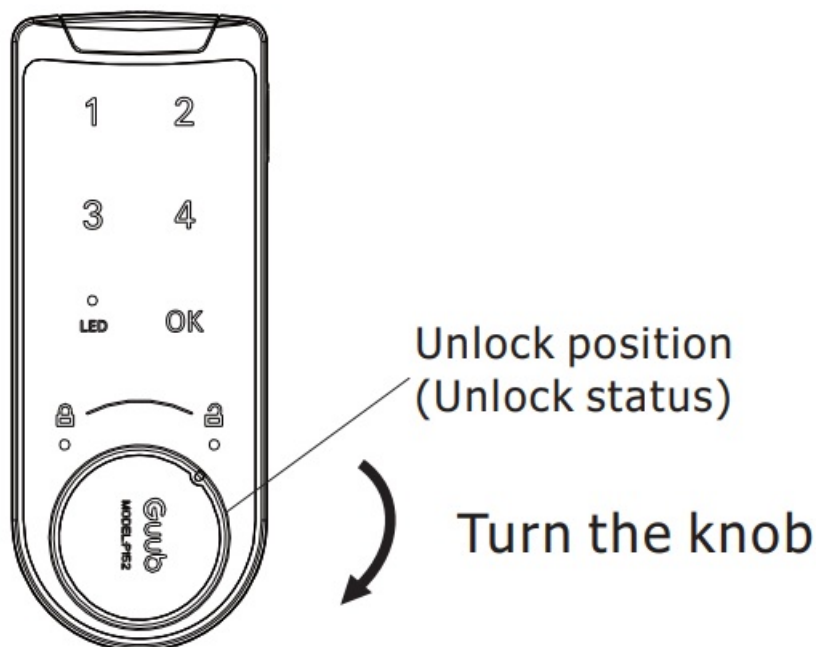
1. Unlock

Factory default code is 123123.

1. Key in 123123 and “OK” then a long “DEE” will be heard

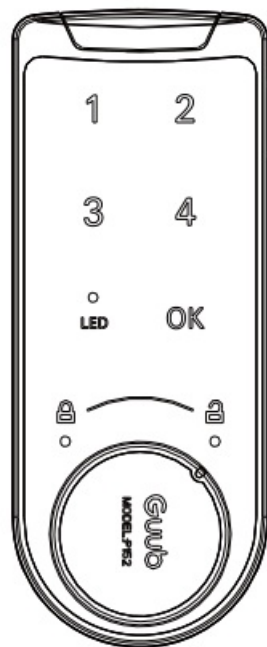


2. Turn the knob to “” position then unlock successfully



## 2. Lock

1. Turn the knob by anticlockwise direction



Turn the knob

2. Lock successfully when the knob in "LOCK" position



Lock position  
(Lock status)

3. **Code Setting** (Can be set 1-8 digits long)

**Example:** Change factory default code "123123" into new code" 12341234"

1. Key in "123123" and twice "OK", enter new code "12341234" + "OK", a long "DEE" will be heard



1 | 2 | 3 | 1 | 2 | 3



OK



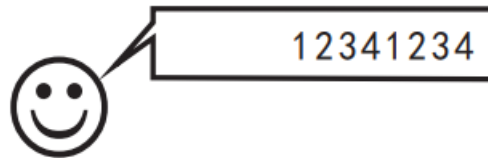
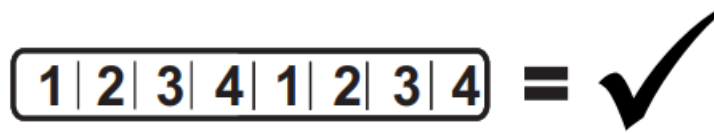
1 | 2 | 3 | 4 | 1 | 2 | 3 | 4



OK



2. New code be set successfully



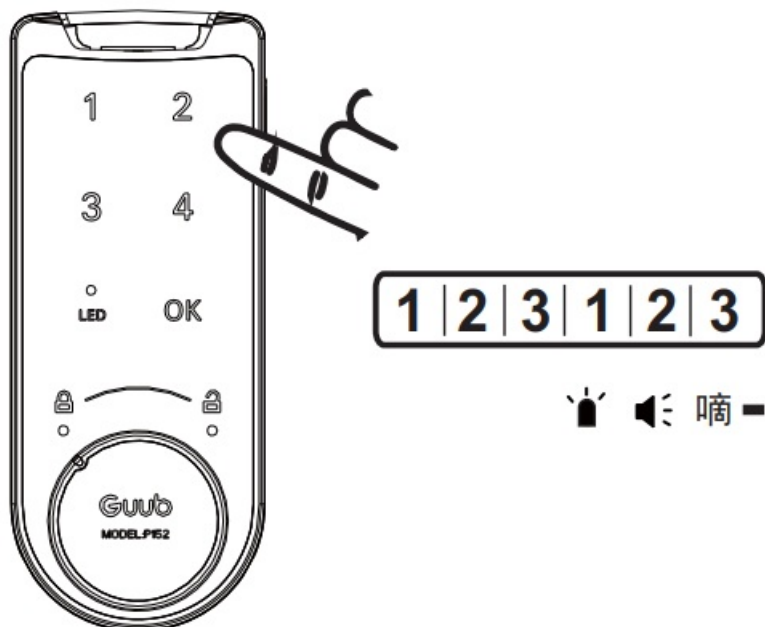
Please remember and keep properly your new code


## How to use Public function

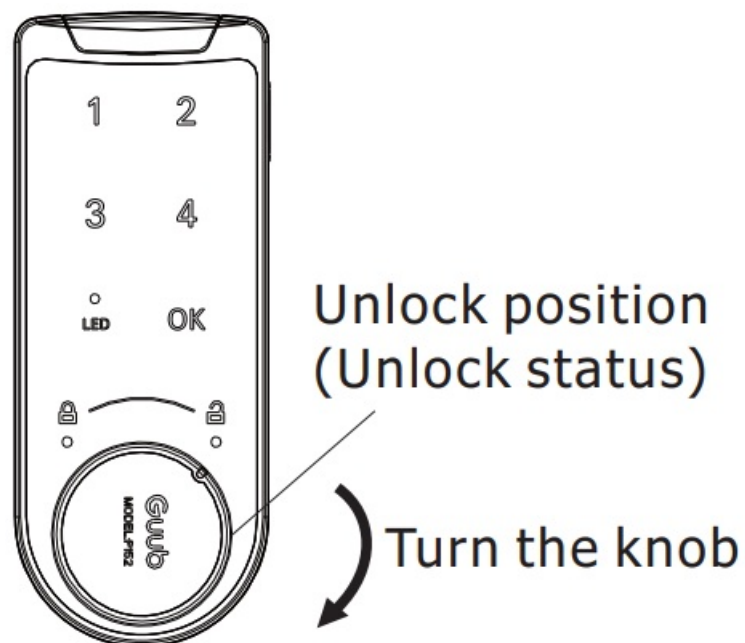
### 1. Unlock by factory code

Factory default code is "123123".

1. Key in 123123 then a long "DEE" will be heard



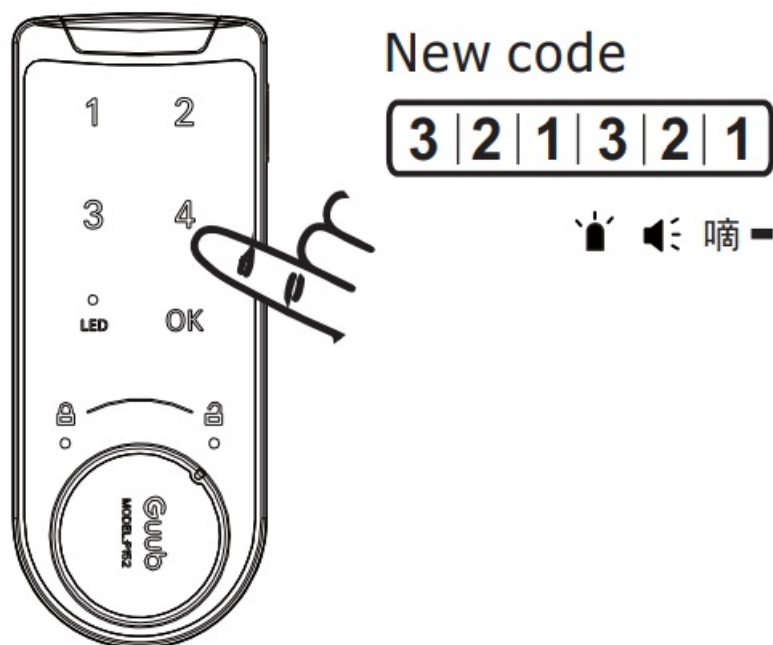
2. Turn the knob to “” position then unlock successfully




## 2. Set code to lock: fix 6 digits long as code for public function

**Example:** Set a code “321321”

1. Key in new code 321321, then a long “DEE” will be heard

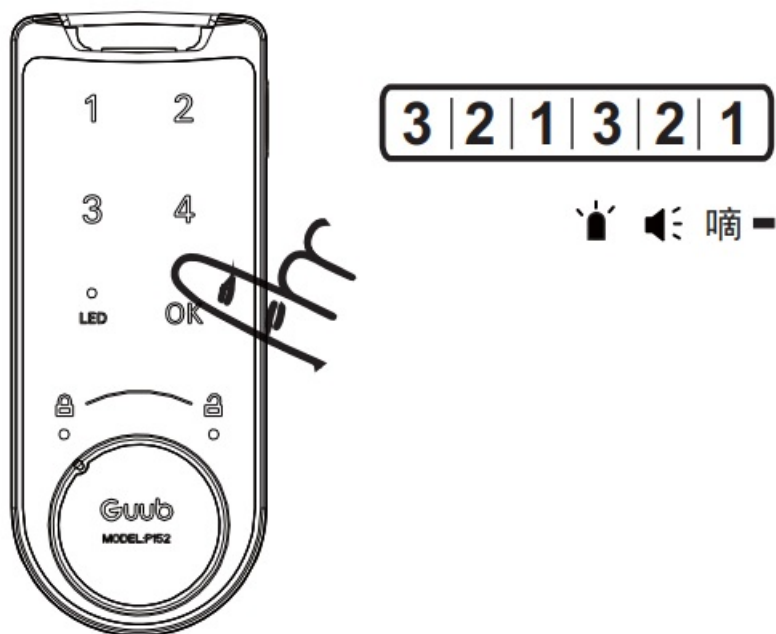


2. Lock successfully when the knob in “” position



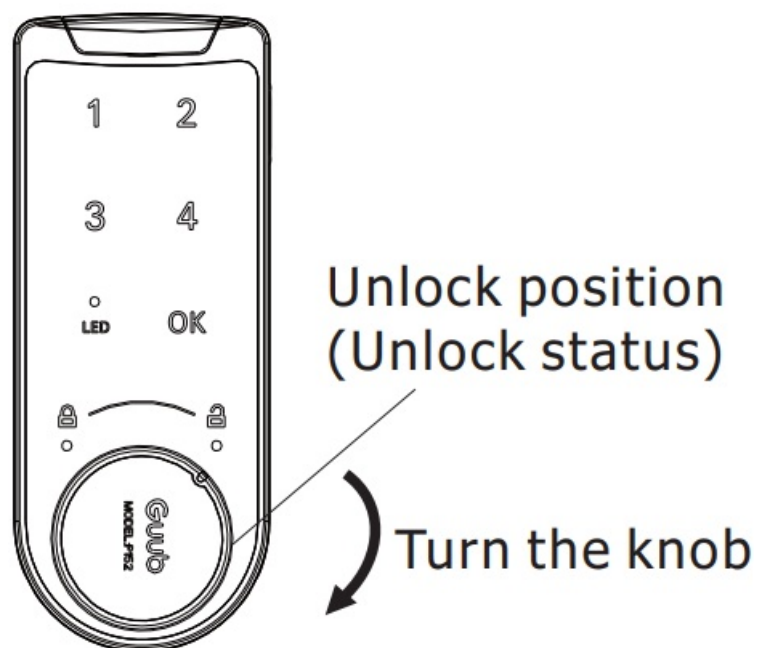
### 3. Unlock

1. Key in 321321 and "OK" then a long "DEE" will be heard



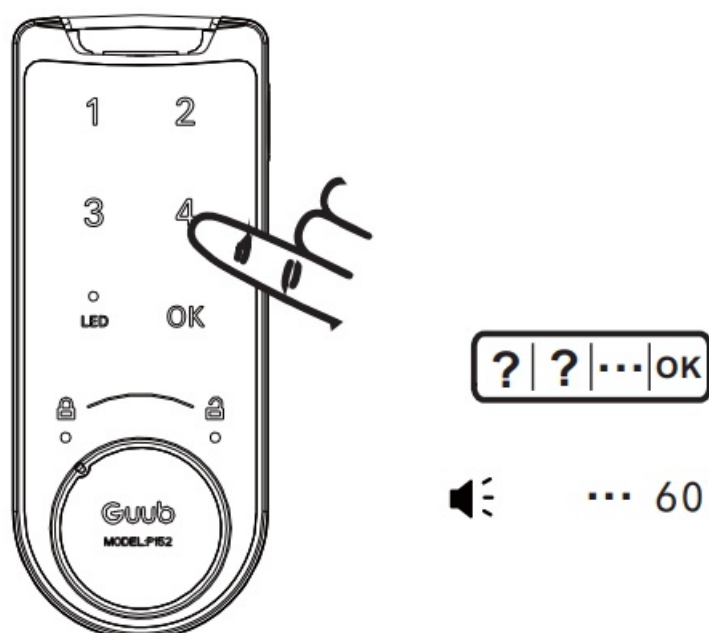
2. Turn the knob to "🔓" position then unlock successfully



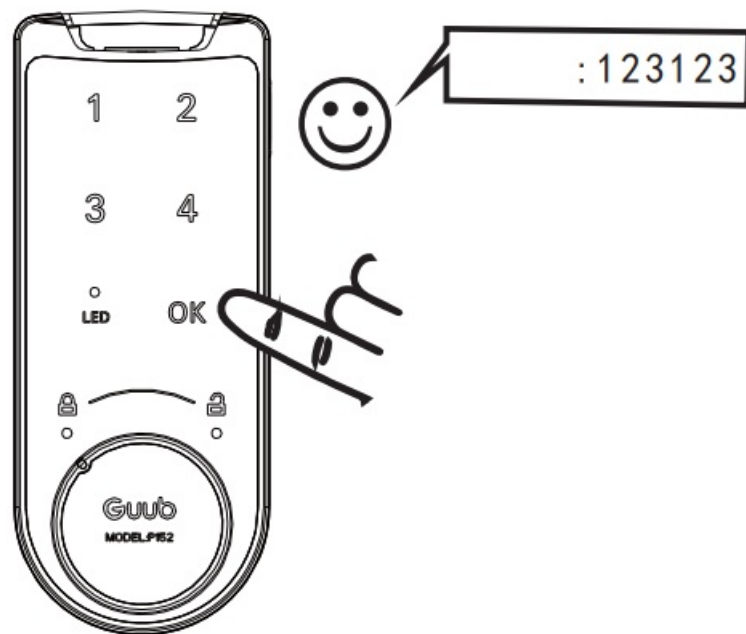


## Alarm Function

1. Continuous alarm for 60 seconds when key in wrong code 4 times or malignant decode

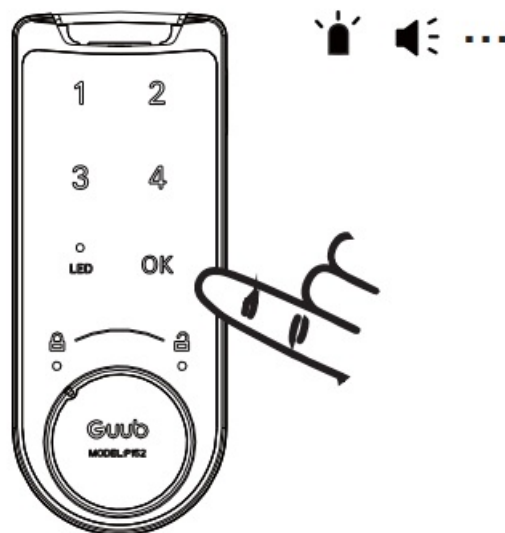


2. Key in the correct code to clear up the alarm

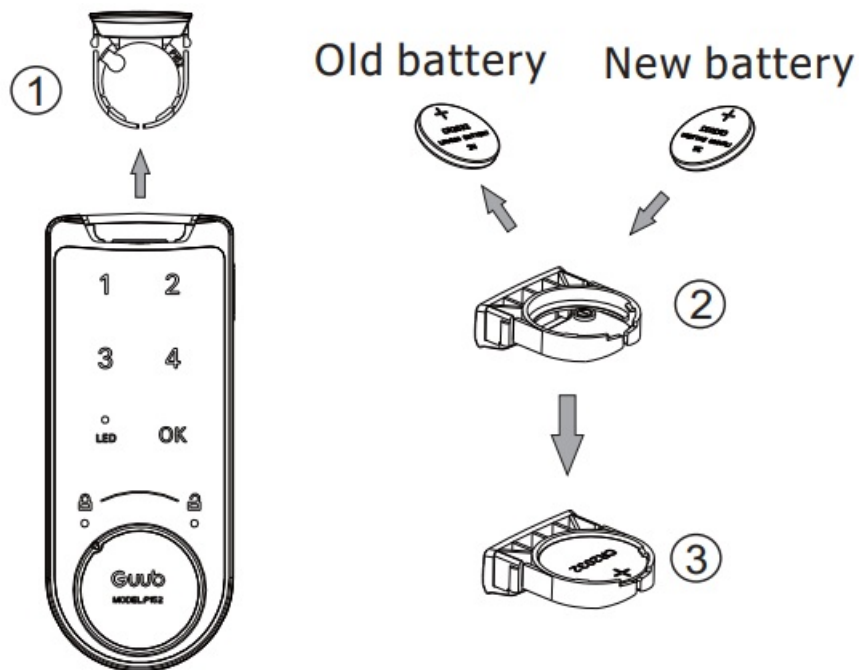


## Change Battery

1. It requires to change a new battery when you heard 3 times "DEE, DEE, DEE" after unlocking



2. Following the below steps to change the battery Old battery New battery

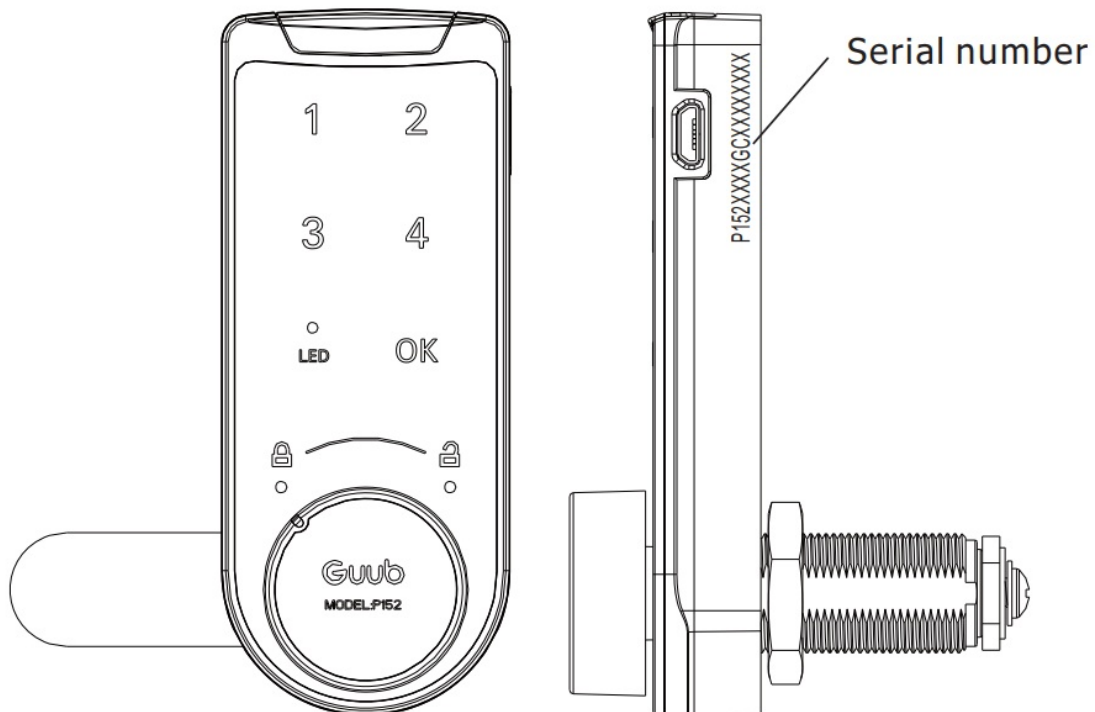


**Notice:** Positive of battery should be up position

**Notice:** The lock is powered by a button cell battery (Model: CR2032) with lifetime one year. When power is low, the lock will alarm “DEE, DEE, DEE” for 3 times when you unlock it. The lock still can afford 200 times unlocking until power consumers up. You need to change battery as soon as possible.

#### **Decoding (Emergency unlock)**

In case users forgot the code, they can apply decoding service from supplier or Guub through lock serial number. (Decoded by manage code)



#### **Trouble Shooting**

Trouble	Main Reason	Solutions
Alarm 2 times “DEE, DEE” after key in the code, lock can not open	Wrong code	Refer to Decoding (Emergency Unlock)
Alarm a long “DEE” after key in correct code, and alarm again 3 times “DEE, DEE, DEE”, lock can not be open	Lower power	Change a new battery
Alarm a long “DEE” after key in the correct code, lock can not be open	Wrong locking position of knob	Turn the knob back to right locking position and try again
No sound when key in numbers, lock can be open	Alarm buzzer is broken	Change a new main board or alarm buzzer



# EPIC OFFICE

[furniture.com.au](http://furniture.com.au)

**Address:** Guub Industrial Park,  
No.5 Kemulang South Road,  
Tianhe District of Guangzhou, China


**Tel:** +86-20-38335088

**Fax:** +86-38335099

**Email:** [info@guub.cn](mailto:info@guub.cn)

**Website:** [www.guub.cn](http://www.guub.cn)

## Documents / Resources

	<a href="#">EPIC OFFICE P152 Touch Keypad Function Guub Intelligent Lock</a> [pdf] User Manual P152, P152 Touch Keypad Function Guub Intelligent Lock, Touch Keypad Function Guub Intelligent Lock, Keypad Function Guub Intelligent Lock, Guub Intelligent Lock, Intelligent Lock, Lock
---	---

## References

- [GUUB - - - - \[ \]](#)