

## EPHAN DL6R Smart Down Lights User Manual

[Home](#) » [EPHAN](#) » EPHAN DL6R Smart Down Lights User Manual 



Ephan Smart Down lights user manual

### Contents

- [1 Ephan Smart Down Lights included:](#)
- [2 Configuration](#)
- [3 Documents / Resources](#)
- [4 Related Posts](#)

### Ephan Smart Down Lights included:



Figure 1 .Smart canless recessed lights



figure 2. smart can lights

Wall plate for smart down lights

No matter the wall plate is dimmable or not, there must be a button that can switch the lights on/off. If the wall plate is dimmable, please always set the dimmer to maximum

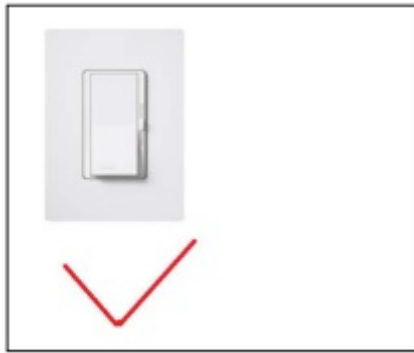


Figure 3. dimmer with switch

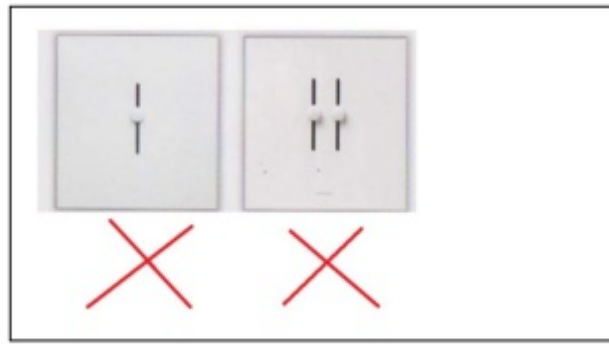


figure 4. dimmer without switch

The reason to use a dimmer with the switch is that in case requires resetting the configuration of the lights, we need to switch the lights on-off 5 times.

## Configuration

**Attention:** Carefully follow the below guidance to finish the configuration before mounting the WIFI lights up to the ceiling, try not to miss any step so that the configuration will be easy and quick.

1. Download and install the smart life App on your cell phone from google play or the apple store

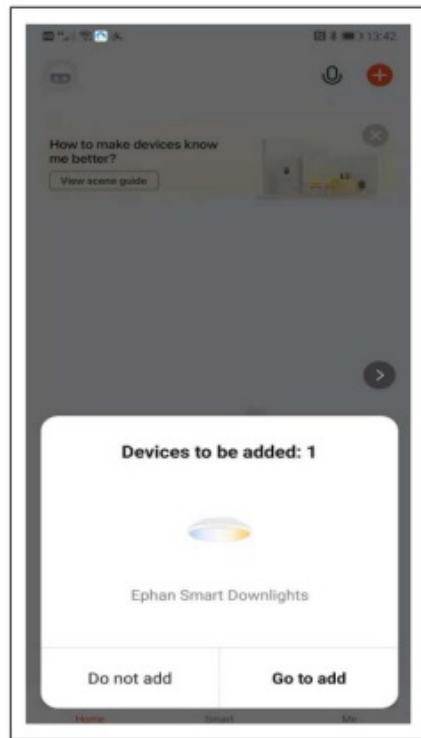
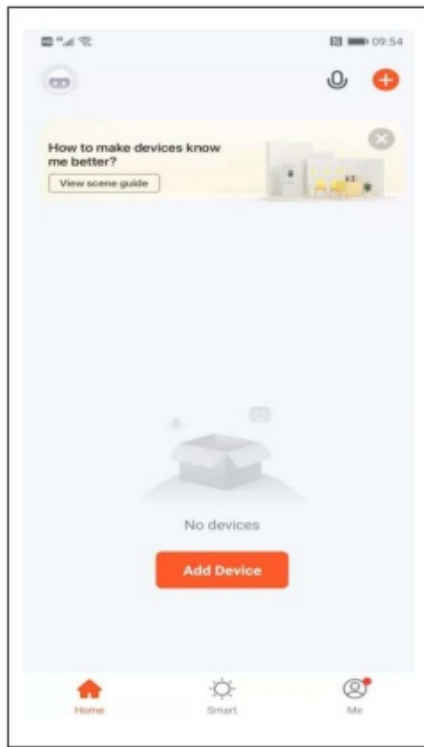


Figure 5. Smart life app

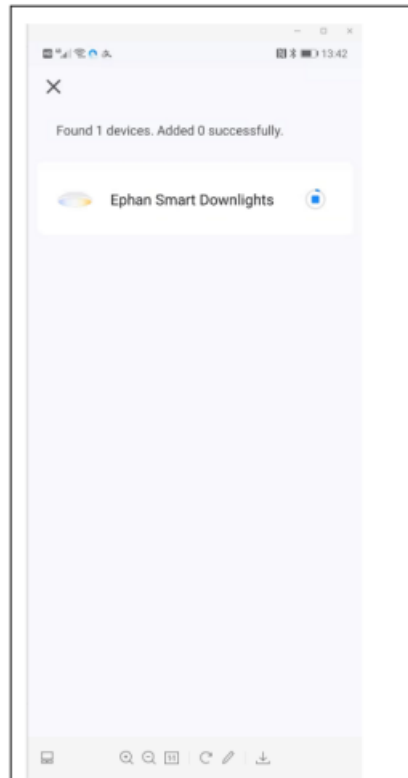
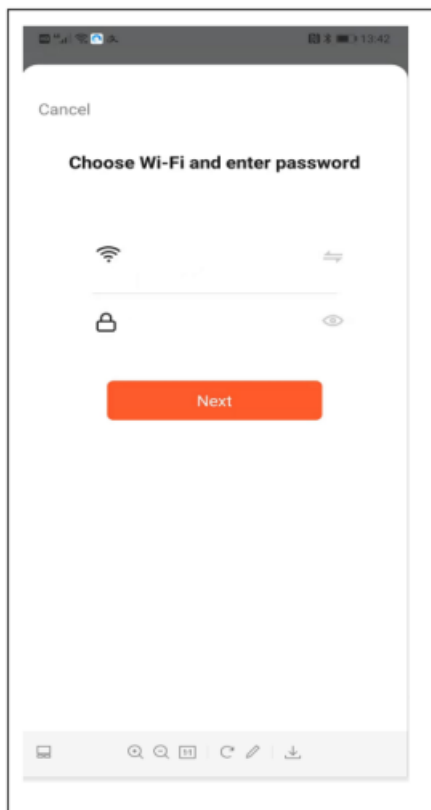
2. prepare the name and password of the WLAN to be used for the WIFI lights on a memo paper, and enable blue tooth on a cell phone.
3. prepare a cable with a switch (available via your local dealer) , it is a very useful tool that can help users finish the configuration easily before mounting the lights onto the ceiling. It is recommended to finish the binding operation before mounting the lights onto the ceiling.

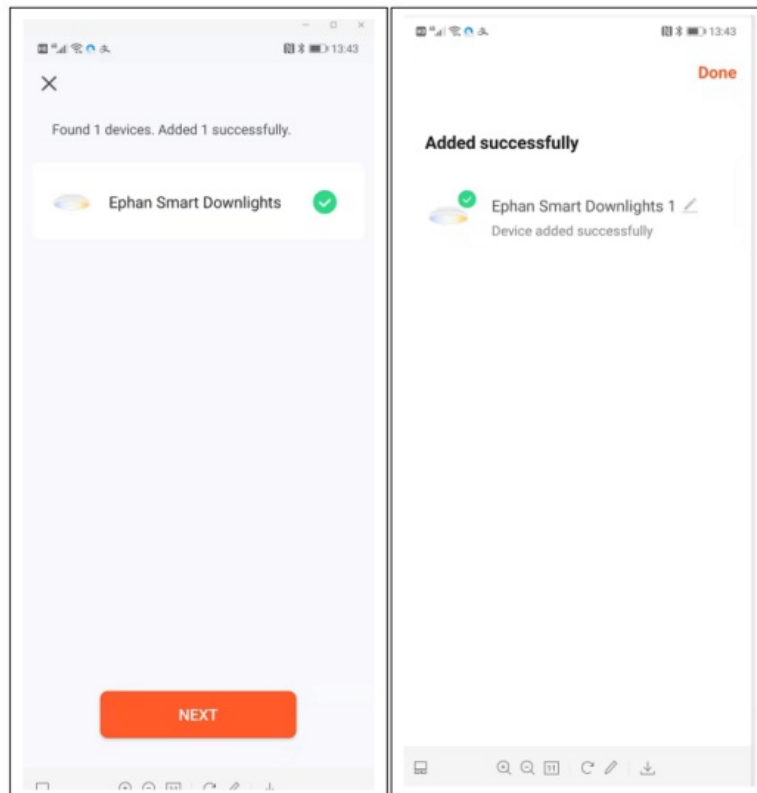


4. Connect the lights to the special switch cable, or to any outlet with a switch, switch on/off 5 times, then the lights will flash, which means it is waiting for the connection to the smart life app. Click 'Add Device, wait for a short while,



a message will pop up indicating the app has found these lights, click ' Go to add', then input the Win name and password, then wait for the Smart life app to download the control panel for these lights Till done.





Click the icon and title can then enter the control panel. FCC Statement This device complies with part 15 of the FCC Rules. Operation is subject to the following two conditions: (1) This device may not cause harmful interference, and (2) this device must accept any interference received, including interference that may cause undesired operation. Any changes or modifications not expressly approved by the party responsible for compliance could void the user's authority to operate the equipment.

This equipment has been tested and found to comply with the limits for a Class B digital device, pursuant to part 15 of the FCC Rules. These limits are designed to provide reasonable protection against harmful interference in a residential installation. This equipment generates, uses, and can radiate radio frequency energy and, if not installed and used in accordance with the instructions, may cause harmful interference to radio communications. However, there is no guarantee that interference will not occur in a particular installation. If this equipment does cause harmful interference to radio or television reception, which can be determined by turning the equipment off and on, the user is encouraged to try to correct the interference by one or more of the following measures:

- Reorient or relocate the receiving antenna.
- Increase the separation between the equipment and receiver.
- Connect the equipment into an outlet on a circuit different from that to which the receiver is connected.
- Consult the dealer or an experienced radio/TV technician for help.

#### **FCC Radiation Exposure Statement:**

This equipment complies with FCC radiation exposure limits set forth for an uncontrolled environment . This transmitter must not be co-located or operating in conjunction with any other antenna or transmitter. This equipment should be installed and operated with a minimum distance of 20cm between the radiator& your body.

#### **Documents / Resources**



[EPHAN DL6R Smart Down Lights](#) [pdf] User Manual

DL6R, 2A358DL6R, DL6R Smart Down Lights, Smart Down Lights