



EPH CONTROLS TA2 Thermal Actuator Instruction Manual

[Home](#) » [EPH CONTROLS](#) » EPH CONTROLS TA2 Thermal Actuator Instruction Manual 

Contents

- [1 EPH CONTROLS TA2 Thermal Actuator](#)
- [2 TA2 Thermal Actuator](#)
- [3 Product Usage Instructions](#)
- [4 Installation Instructions](#)
- [5 Documents / Resources](#)
 - [5.1 References](#)
- [6 Related Posts](#)



EPH CONTROLS TA2 Thermal Actuator



TA2 Thermal Actuator

The TA2 Thermal Actuator is an electrically operated valve used to control the flow of fluids or gases in pipelines. It is designed for use in normal environments and can be used in various applications such as heating, ventilation, and air conditioning systems.

Product Information

- Factory setting is (NC) Normally Closed
- Guidelines for the electrician; Level of contamination 2; As per EN60730
- IP 44 and IP 42 rated for protection against dust and water
- Available in two variants: TA230 (230Vac) and TA24 (24Vac)
- Voltage: 230 V~ or 24V ~ depending on the variant
- Running time: 3.5 minutes
- Stroke: 3.5 mm
- Spring pressure: 125 N
- Power consumption: 2.5 W
- Inrush current: Depending on the voltage used

Product Usage Instructions

Before using the TA2 Thermal Actuator, ensure that the cable is not defective. If the cable is defective, do not use the actuator. Disconnect the power supply from any defective appliances.

The factory setting of the TA2 Thermal Actuator is Normally Closed (NC). When changing from Normally Closed to Normally Open, live components are exposed. Therefore, disconnect the power before changing the settings.

The TA2 Thermal Actuator is designed for use in normal environments and is rated IP 44 or IP 42 for protection against dust and water. The actuator is available in two variants: TA230 (230Vac) and TA24 (24Vac). Ensure that

you select the correct variant for your application.

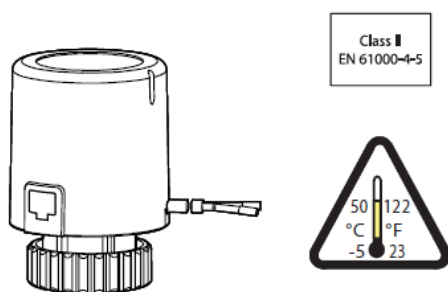
Refer to the product manual for guidelines on the level of contamination and installation instructions as per EN60730.

CAUTION! Do not use if cable is defective.

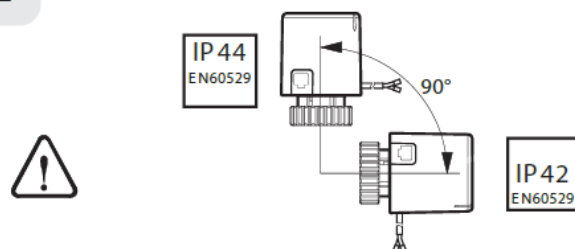
- Disconnect the power supply from any defective appliances.
- Factory setting is (NC) Normally Closed
- Guidelines for the electrician; Level of contamination 2; As per EN60730
- When changing from normally closed to normally open, live components are exposed. Therefore, disconnect the power when changing.

Installation Instructions

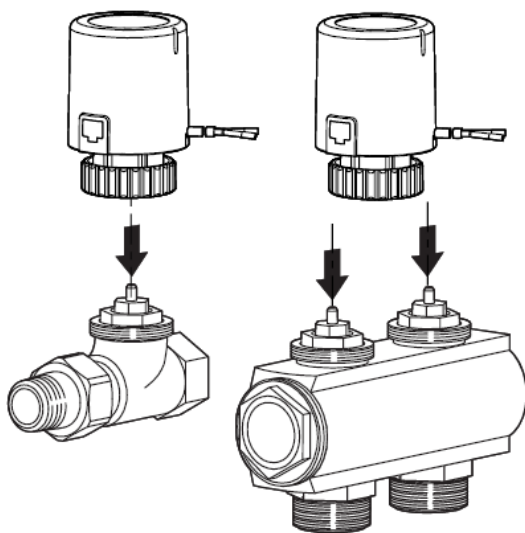
1



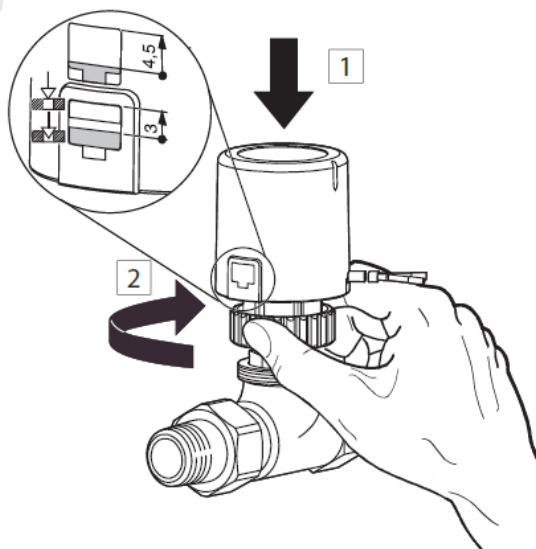
2



3

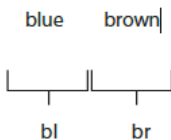
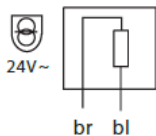


4



5

TA230 - 230Vac
TA24 - 24Vac



Voltage
Running time
Stroke
Spring pressure
Power consumption
Inrush current

TA230

TA24

230 V~

24 V~

3,5 min.

4,5 min.

3,5 mm

3,5 mm

125 N

125 N

2,5 W

3 W

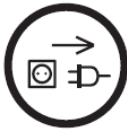
<550 mA

<300 mA

for max. 100ms

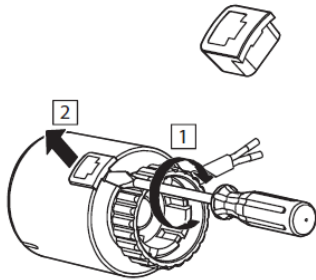
for max. 2min.

6

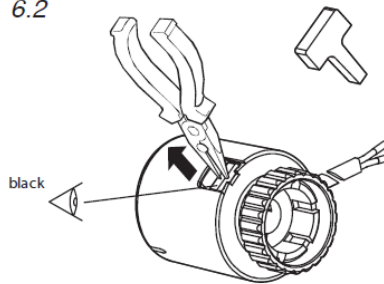


To set to (NO) Normally Open

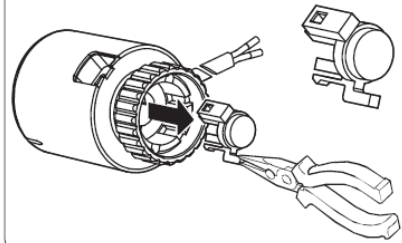
6.1



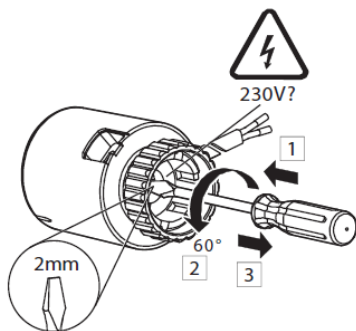
6.2



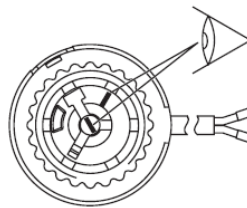
6.3



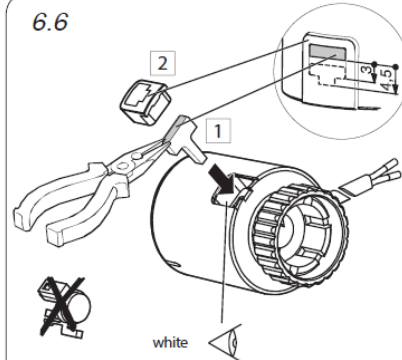
6.4



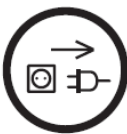
6.5



6.6

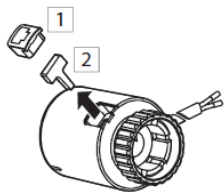


7

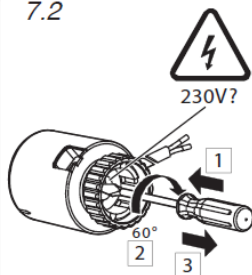


To reset to (NC) Normally Closed

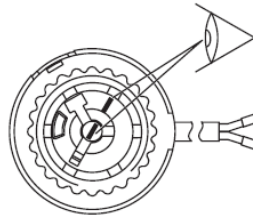
7.1



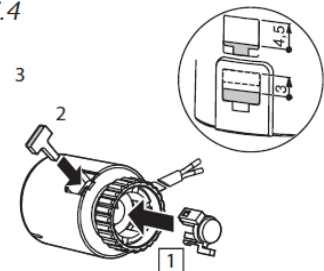
7.2



7.3



7.4



EPH Controls Ireland

technical@ephcontrols.com www.ephcontrols.com

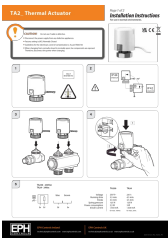
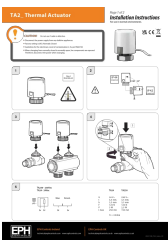
EPH Controls UK

technical@ephcontrols.co.uk www.ephcontrols.co.uk

2023-03-23_TA2_Insins_PK

For use in normal environments.

Documents / Resources

	<p>EPH CONTROLS TA2 Thermal Actuator [pdf] Instruction Manual TA230, TA24, TA2 Thermal Actuator, TA2, Thermal Actuator, Actuator</p>
	<p>EPH CONTROLS TA2 Thermal Actuator [pdf] Instruction Manual TA2 Thermal Actuator, TA2, Thermal Actuator, Actuator</p>

References

- [EPH Home Page - EPH Controls](#)
- [EPH Home Page - EPH Controls](#)