



# EPH CONTROLS R17 1 Zone Timeswitch Instruction Manual

[Home](#) » [EPH CONTROLS](#) » EPH CONTROLS R17 1 Zone Timeswitch Instruction Manual 

## Contents

- [1 EPH CONTROLS R17 1 Zone Timeswitch](#)
- [2 INSTALLATION](#)
- [3 Contents](#)
  - [3.1 Factory default settings](#)
- [4 Specifications & wiring](#)
- [5 Documents / Resources](#)
  - [5.1 References](#)
- [6 Related Posts](#)



**EPH CONTROLS R17 1 Zone Timeswitch**

**Important: Keep this document**

This time switch is designed to provide ON/OFF control for 1 zone, with the value-added application of in-built frost protection.

**CAUTION!**

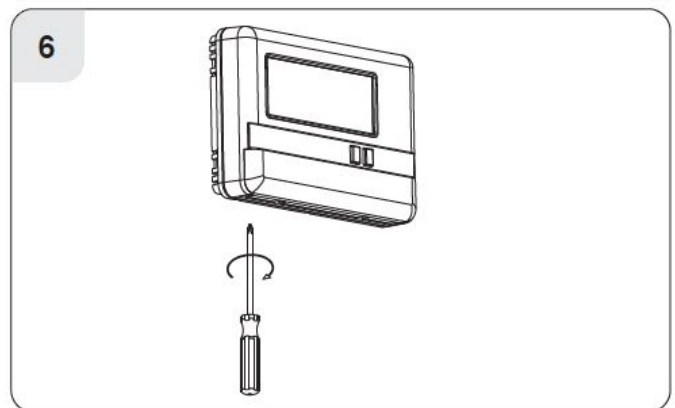
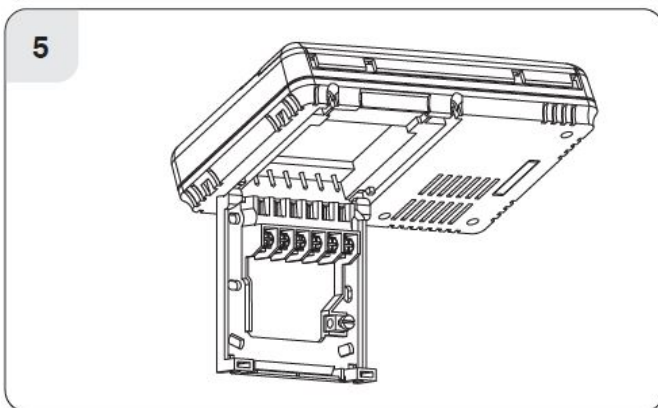
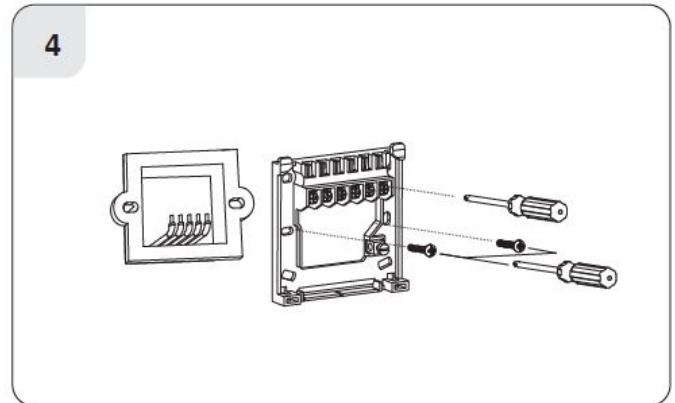
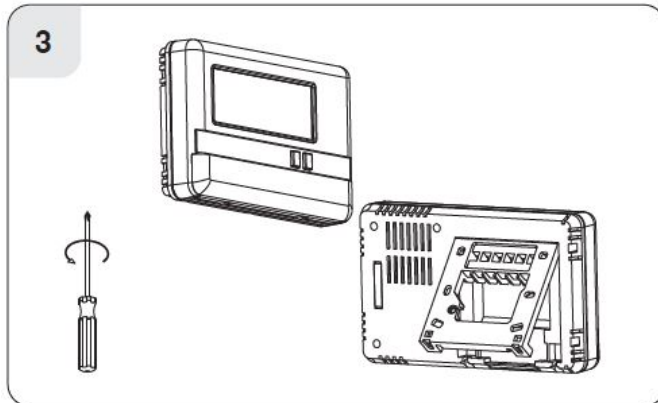
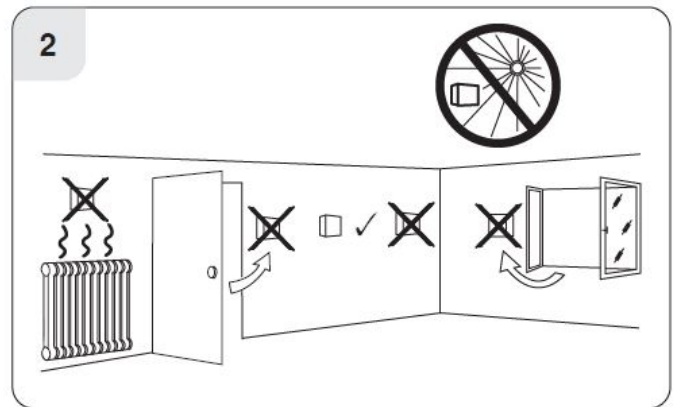
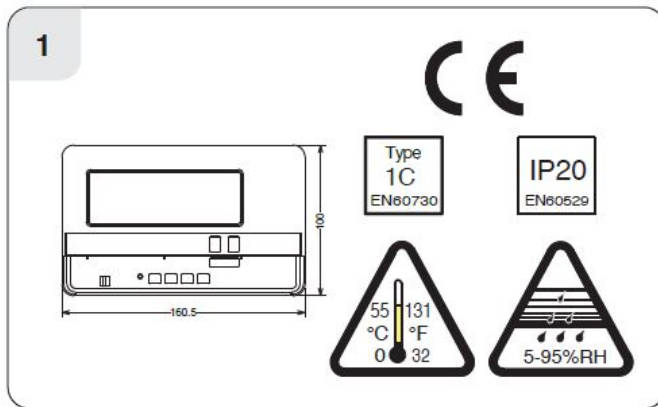
Installation and connection should only be carried out by a qualified person and in accordance with national wiring regulations.

- Before commencing any work on the electrical connections, you must first disconnect the time switch from the mains. None of the 230V connections must be live until the installation has been completed and the housing is closed. Only qualified electricians or authorised service staff are permitted to open the time switch. Disconnect from the mains supply in the event of any damage to any buttons.
- There are parts that carry mains voltage behind the cover. The time switch must not be left unsupervised when open. (Prevent nonspecialists and especially children from gaining access to it.)
- If the time switch is used in a way not specified by the manufacturer, its safety may be impaired.
- Prior to setting the time switch, it is necessary to complete all required settings described in this section.
- Never remove this product from the electrical baseplate. Do not use sharp tools to push any button.

**INSTALLATION**

This time switch can be mounted in the following ways:

1. Directly wall mounted
2. Mounted to a recessed conduit box



## Contents

1. Factory default settings
2. Specifications & wiring
3. Master reset



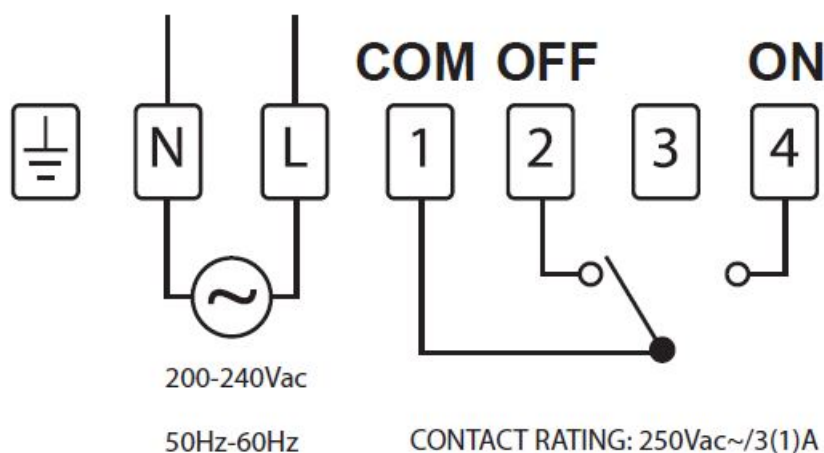
## Factory default settings

- **Contacts:** Volt free contact
- **Program:** 5/2D
- **Backlight:** On

- **Keypad:** Unlocked
- **Frost Protection:** Off
- **Clock type:** 24 Hr Clock  
Day-Light Saving

## Specifications & wiring

- **Power Supply:** 200-240 Vac, 50-60 Hz, 8 VA
- **Ambient Temp:** 0~35°C
- **Contact Rating:** 250 Vac 3(1)A Program Memory
- **backup:** 1 year
- **Battery:** 3Vdc Lithium LIR 2032
- **Backlight:** Blue
- **IP rating:** IP20
- **Backplate:** British System Standard
- **Pollution degree:** 2
- **Rated Impulse Voltage:** 2,500V as per EN 60730
- **Automatic Action:** Type 1.C
- **Software:** Class A
- **Ball Pressure Test Temperature:** 70°C



If the mains voltage output is required, terminals L & 1 must be electrically linked. The cable link is provided with this time switch.

### Master reset

Lower the cover on the front of the time switch. There are four hinges holding the cover in place. Between the 3rd and 4th hinges, there is a circular hole. Insert a ballpoint pen or similar object to master reset the time switch. After pressing the master reset button, the date and time will now need to be reprogrammed.


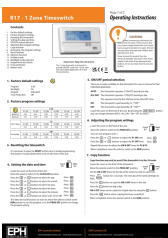

### EPH Controls Ireland

[technical@ephcontrols.com](mailto:technical@ephcontrols.com) [www.ephcontrols.com](http://www.ephcontrols.com).

### EPH Controls UK

[technical@ephcontrols.com](mailto:technical@ephcontrols.com) [www.ephcontrols.co.uk](http://www.ephcontrols.co.uk).

## Documents / Resources

	<p><a href="#">EPH CONTROLS R17 1 Zone Timeswitch</a> [pdf] Instruction Manual R17 1 Zone Timeswitch, R17, 1 Zone Timeswitch, Zone Timeswitch, Timeswitch</p>
	<p><a href="#">EPH CONTROLS R17 1 Zone Timeswitch</a> [pdf] Instruction Manual R17 1 Zone Timeswitch, R17, 1 Zone Timeswitch, Zone Timeswitch, Timeswitch</p>
	<p><a href="#">EPH CONTROLS R17 1 Zone Timeswitch</a> [pdf] Instruction Manual R17 1 Zone Timeswitch, R17 1, Zone Timeswitch, Timeswitch</p>

References

- [EPH Home Page - EPH Controls](#)
- [EPH Home Page - EPH Controls](#)