



Contents [[hide](#)]

- [1 EOMNIA EH.866 Series Handle Sets](#)
- [2 Product Usage Instructions](#)
- [3 Product specifications](#)
- [4 Installation instructions \(EH.8668 \(A\) is a reference example\)](#)
- [5 FAQs](#)
- [6 Documents / Resources](#)
 - [6.1 References](#)



EOMNIA EH.866 Series Handle Sets



Product Specifications

EH.8668 (A)

- Front plate
- Back plate
- Lock Cylinder
- Password keyboard swiping area
- Electronic module master control Thumbpiece
- Initialize button
- Turnpiece
- Battery compartment
- Knob
- Grip Handle
- Battery cover

Product Usage Instructions

EH.8668 Installation Guide

Install Exploded View

- [Exploded view diagram here]

Installation Steps

1. Step 1: Gather the components listed in the installation manual.
2. Step 2: Attach the front plate and back plate to the door using the provided screws.
3. Step 3: Insert the lock cylinder and secure it in place.
4. Step 4: Install the password keyboard swiping area and the electronic module master control.
5. Step 5: Mount the thumbpiece, knob, grip handle, and battery cover.
6. Step 6: Complete the installation by testing the functionality of the lock.

Notice

Please read and understand all instructions before use:

- The warranty does not apply if damage is caused by failure to follow these instructions.

- Only alkaline batteries can be used, other batteries are not recommended.
- When cleaning the product, please wipe it with a soft cloth.
- When the battery power is low and the alarm occurs, please replace the battery in time to keep the battery power sufficient.

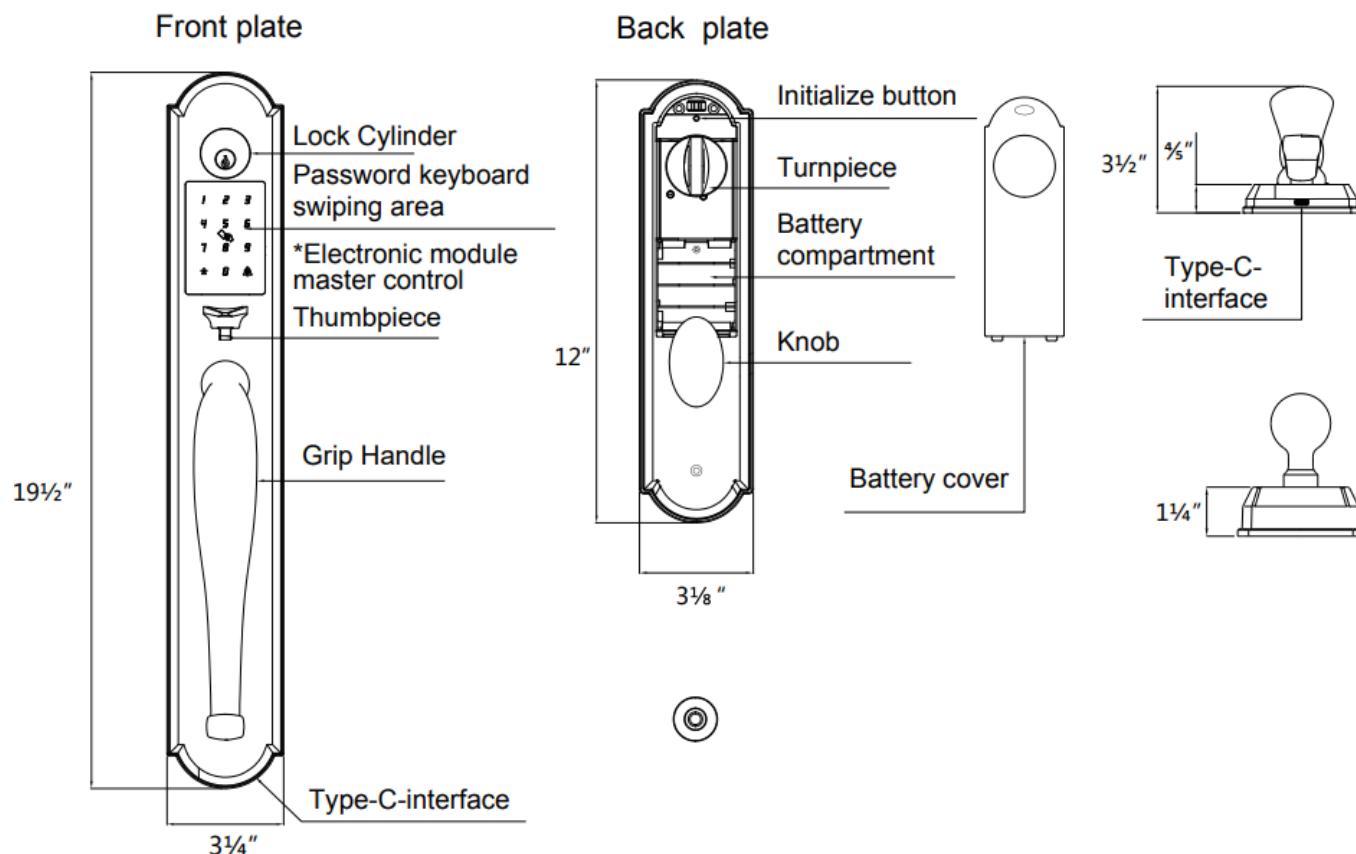
The “electronic main control module” of this product (please refer to the basic product introduction) is dust-proof and water-resistant; tested under controlled laboratory conditions, its effect reaches IP65 level; dustproof and water-resistant functions are not permanently effective.

- Protective properties degrade due to daily wear and tear. Do not charge the smart lock (emergency power interface) when it is wet; damage caused by liquid entering the internal structure of the electronic lock is not covered by the warranty.

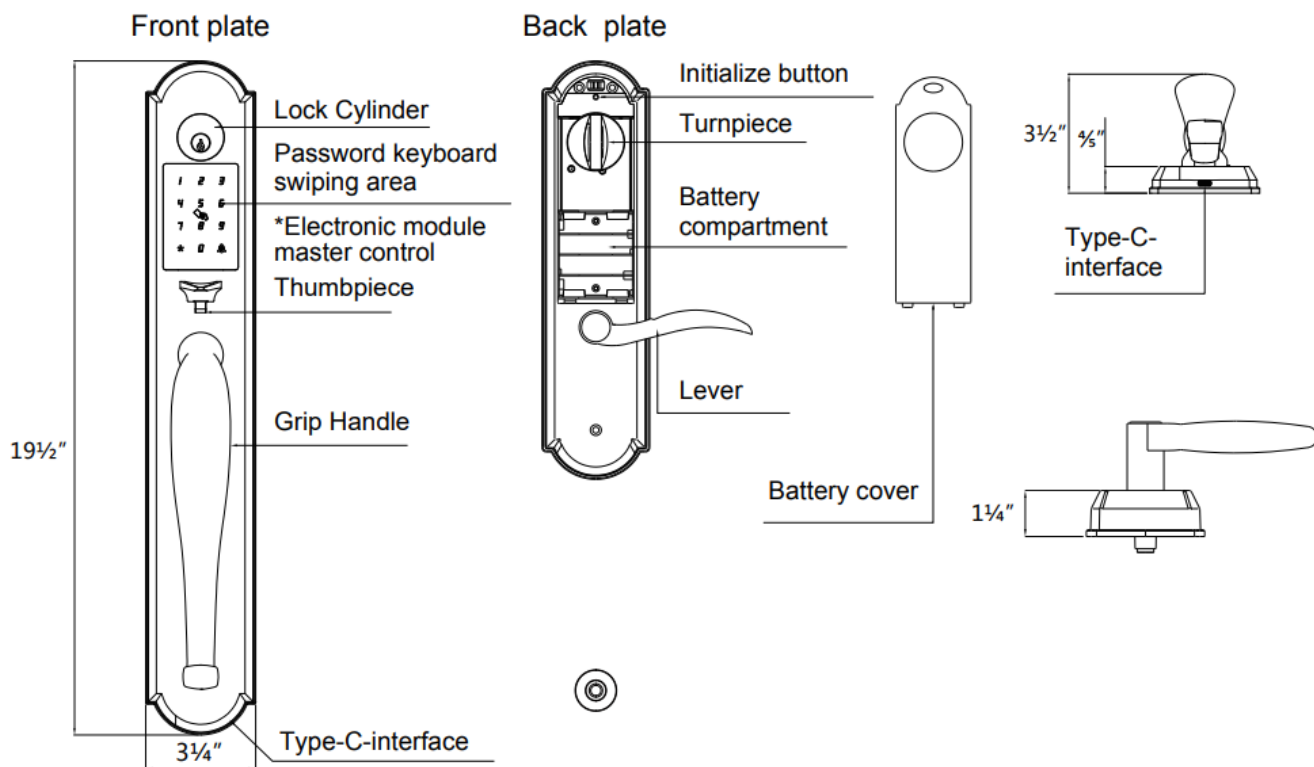
Read before use

Product specifications

EH.8668 (A)



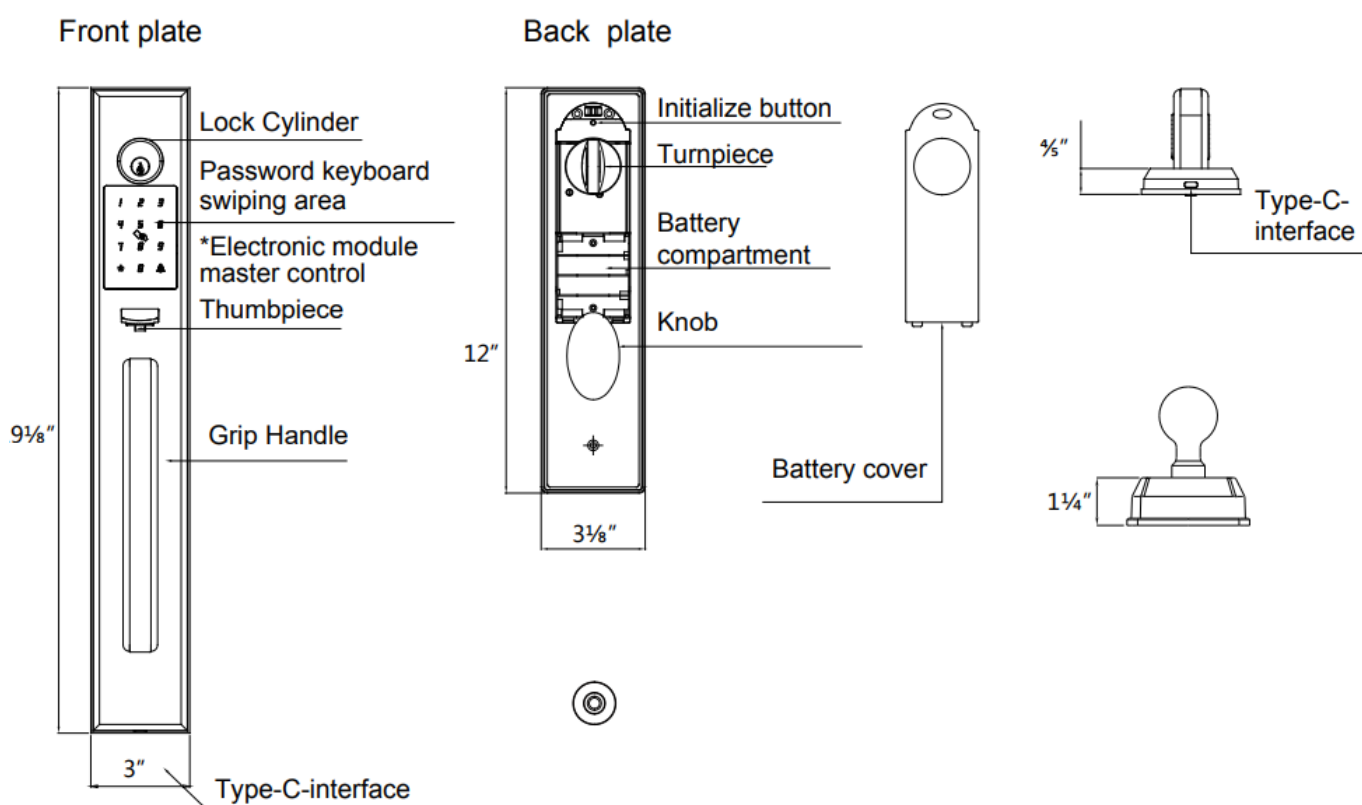
EH.8668 (B)



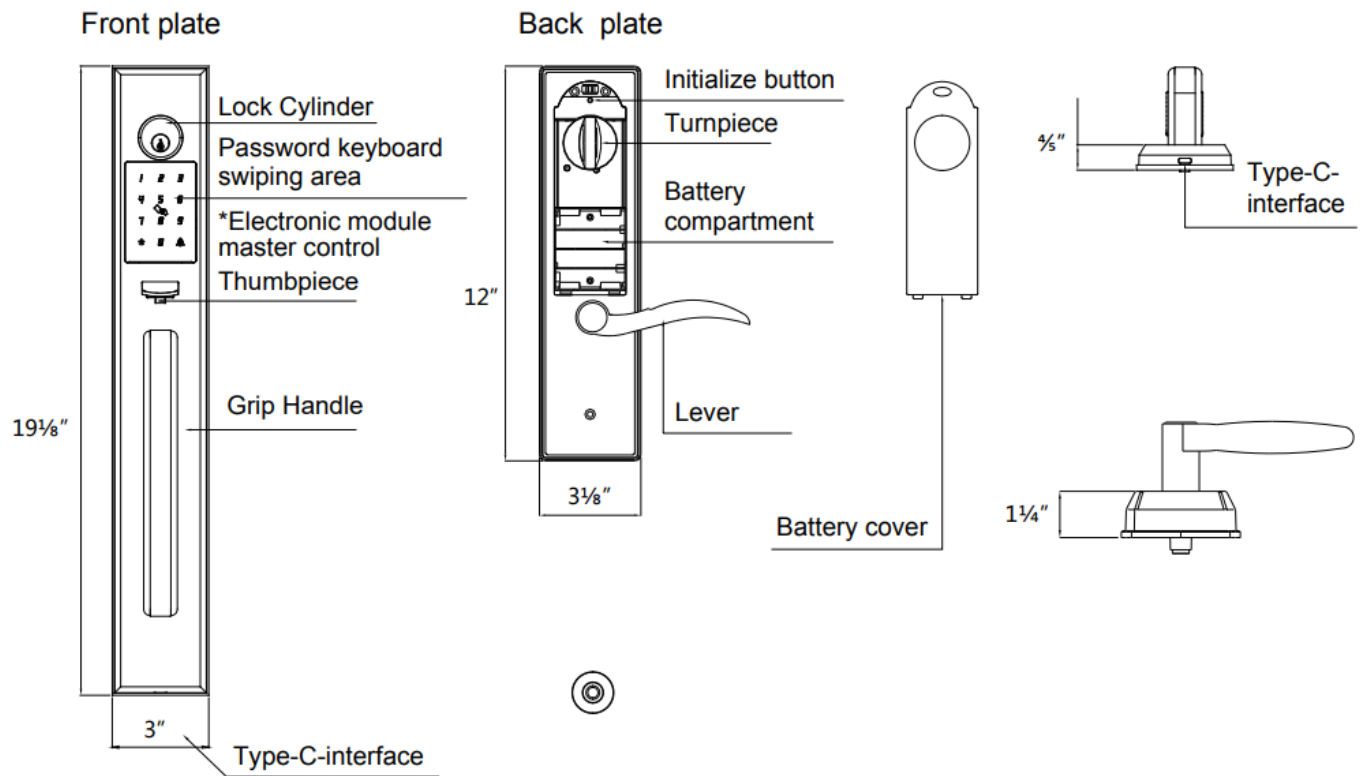
Read before use

Product specifications

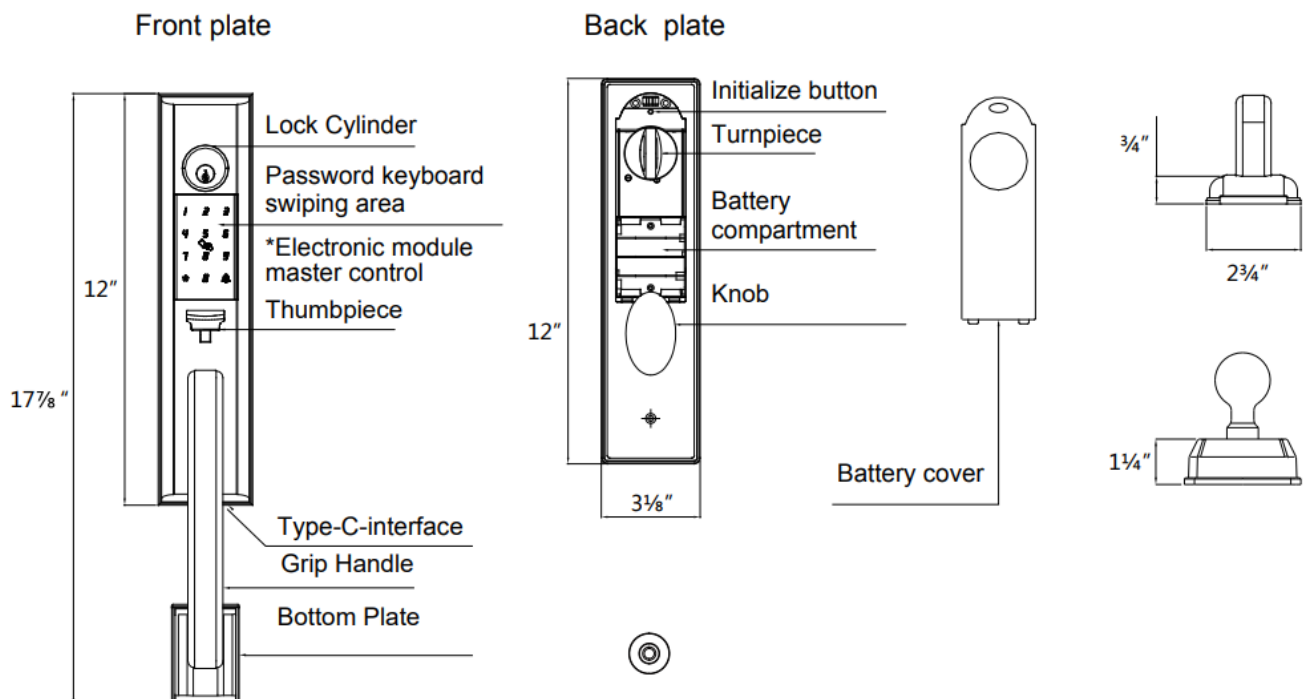
EH.8669 (A)



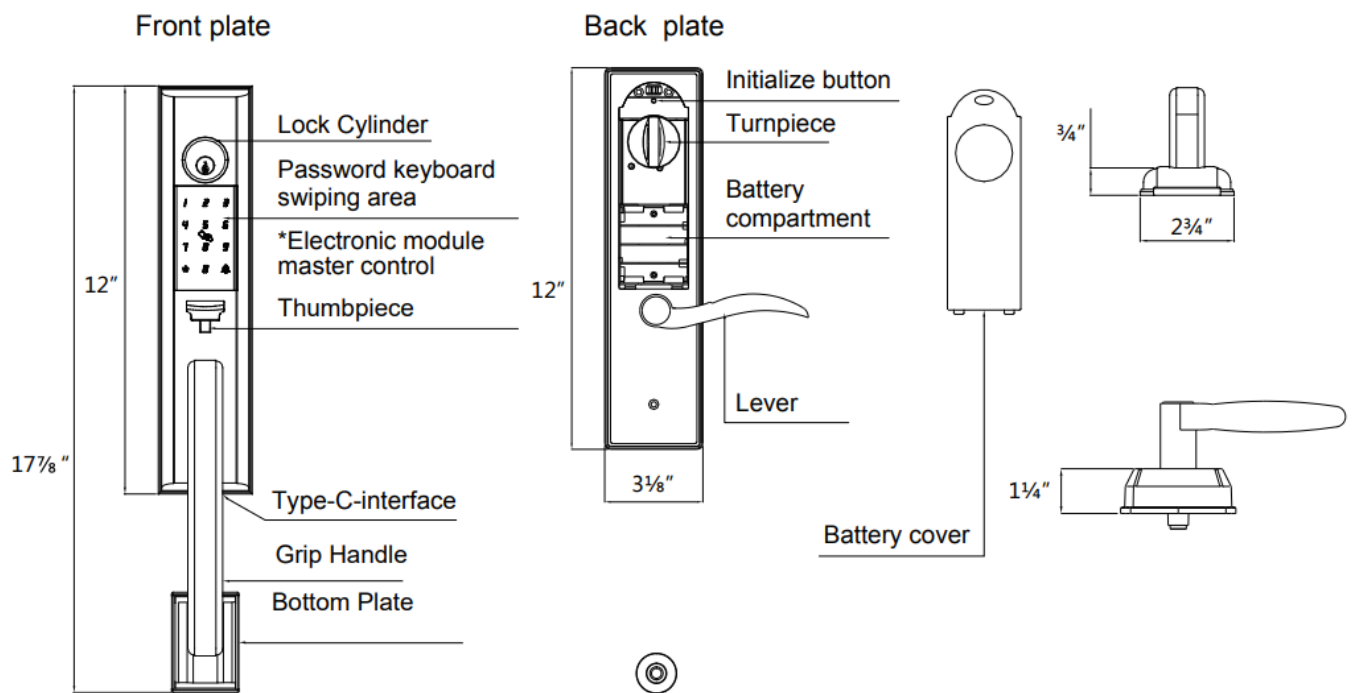
EH.8669 (B)



EH.8688 (A)



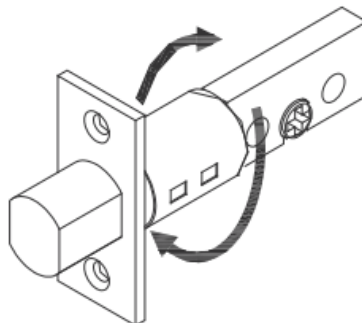
EH.8688 (B)



23/8" 23/ 4" adjustable deadbolt

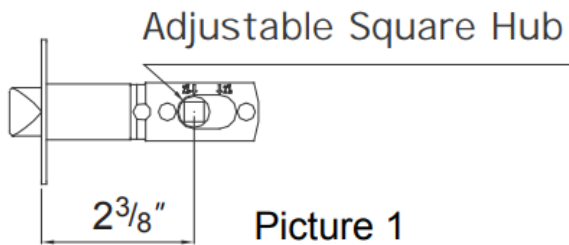
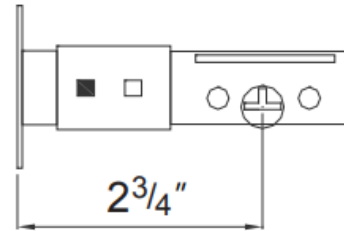
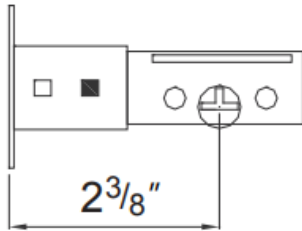


Adjustment instruction of deadbolt. When adjusting, rotate the "deadbolt" (as the picture).

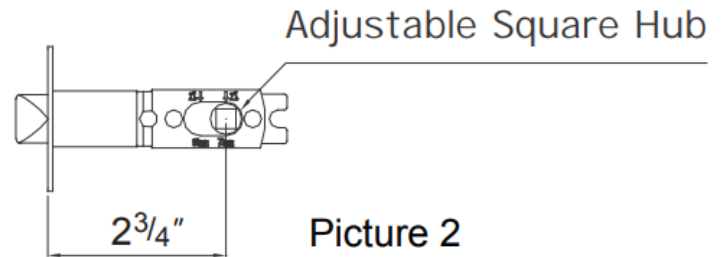


1. Can be adjusted to two backsets 23 /8" and 23 ./4" (as above picture).
2. After selecting the backset, return to the correct position of the deadbolt.

23/8" 23/4" adjustable latch



Picture 1



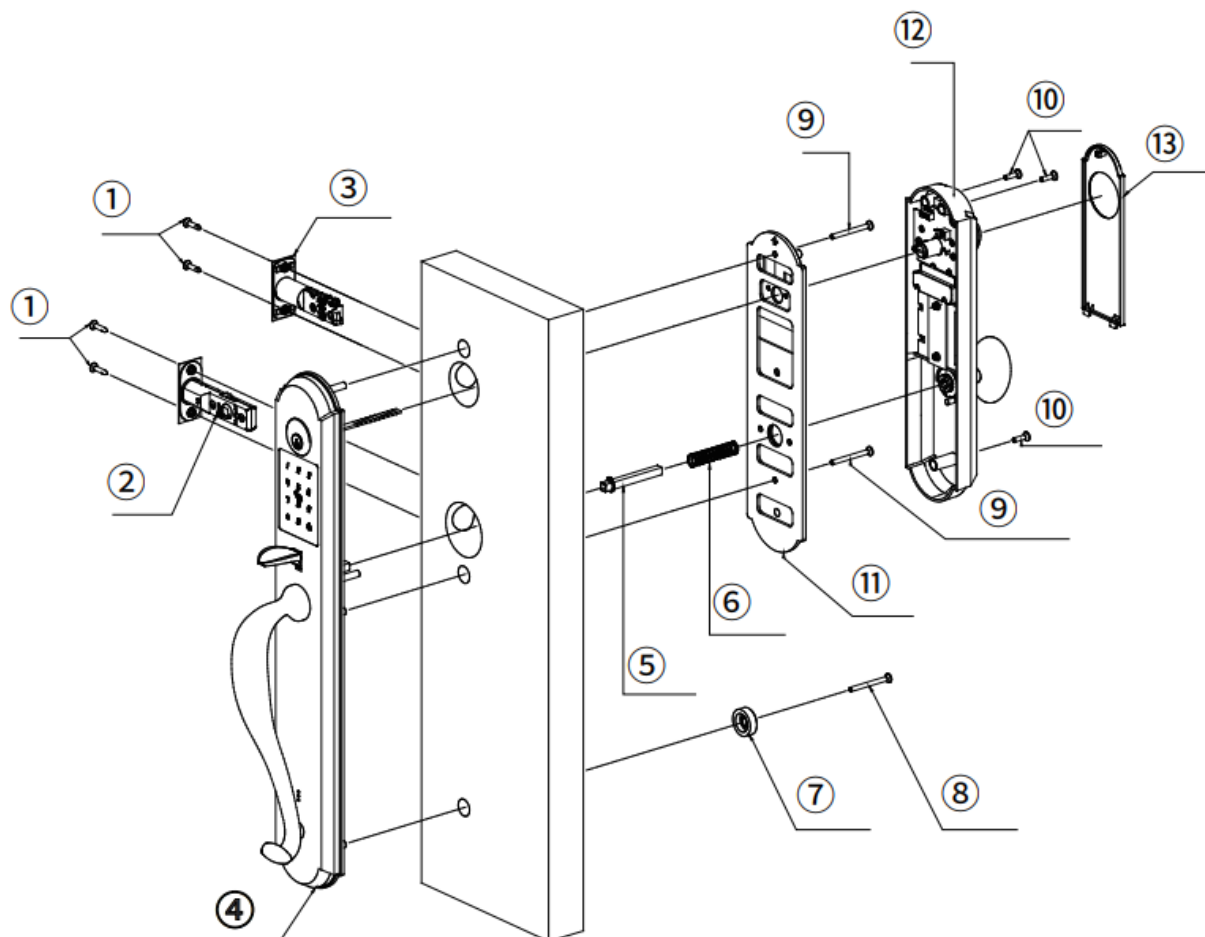
Picture 2

Adjustment instructions of latch

1. Can be adjusted to two installation center distances: $2\frac{3}{8}$ " and $2\frac{3}{4}$ ".
2. When adjusting, push the "adjustable square core" forward to $2\frac{3}{8}$ " (Picture 1), and pull it backward to adjust to $2\frac{3}{4}$ " (Picture 2).

Installation instructions (EH.8668 (A) is a reference example)

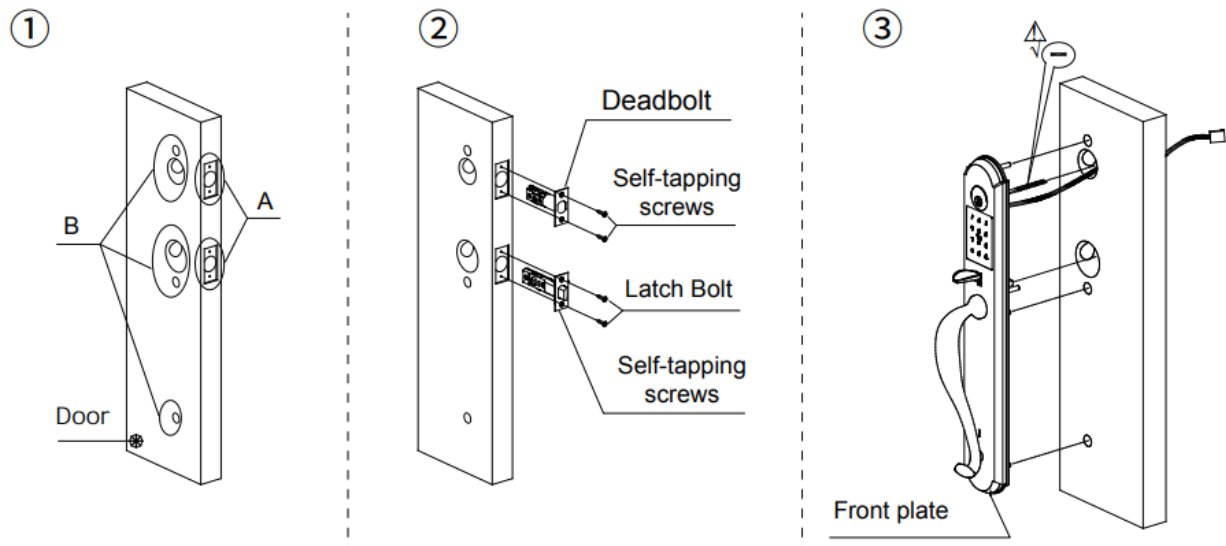
Install exploded view



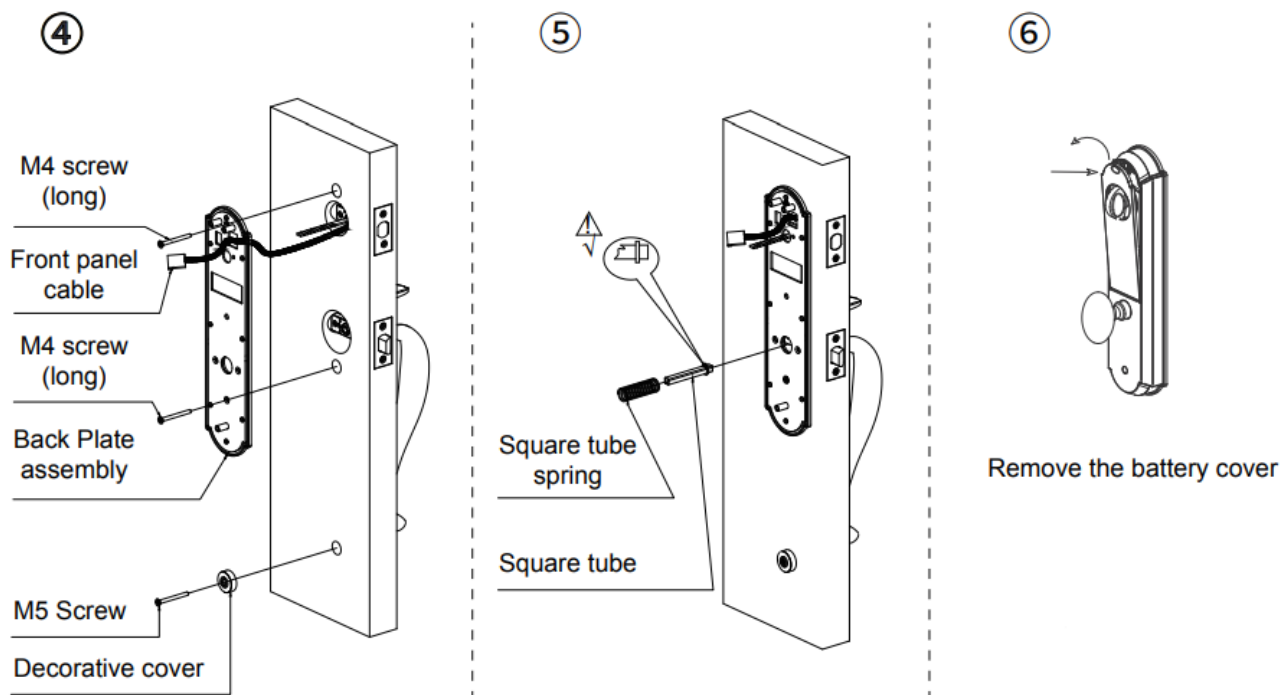
NO.	Title	Quantity
1	Self-tapping screws	4PCS
2	Latch Bolt	1PC
3	Deadbolt	1PC
4	Front plate	1PC
5	Tube	1PC
6	Spring	1PC
7	Decorative cover	1PC

NO.	Title	Quantity
8	M5 screw	1PC
9	M4 screw (long)	2PCS
10	M4 screw (short)	3PCS
11	Base plate assembly	1PC
12	Battery cover	1PC
13	Battery cover	1PC

Installation steps



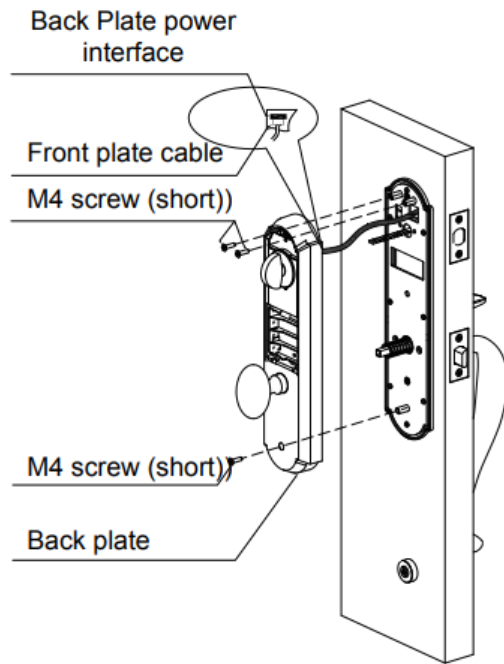
1. Make holes in door "A" and "B" at 2-1/8", and for the Grip Handle bottom screw (per template).



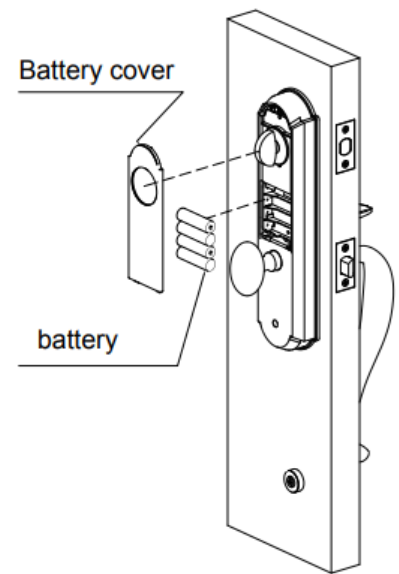
Notice

For details, please refer to the <User manual>

⑦



⑧



Notice

For battery installation details, please refer to the <User manual>

Notice

1. Please do not try to disassemble this product by yourself; otherwise, you may get an electric shock or damage the product.
2. Do not use hard or heavy objects to knock this product.
3. When going out, please make sure the lock is locked before leaving.
4. Please be careful not to hit the handle to avoid injury.
5. Do not use any corrosive cleaners to clean this product, such as gasoline, products that contain alcohol, or other chemicals, etc., otherwise it will cause damage to the electronic circuit, product degradation, or paint peeling.
6. Please change your password regularly (about three months); when your password is leaked, please change your password in time; our company is not responsible for accidents caused by user negligence.
7. When using manual mode to lock, please be sure to confirm whether the door is closed and locked.
8. Do not use rechargeable batteries; only alkaline batteries are recommended.
9. Please be sure to follow the above instructions to avoid any injury or property

damage.

10. The performance of this product cannot be guaranteed in special environments such as high-humidity weather and the seaside.

FAQs

Q: How do I adjust the deadbolt?

A: To adjust the deadbolt, rotate it as shown in the adjustment instructions. Ensure it is set to the desired backset measurement (23/8 or 23/4) and return it to the correct position.

Q: How do I adjust the latch?

A: The latch can be adjusted by moving the adjustable square hub to the appropriate installation center distance (23/8 or 23/4). Follow the provided pictures for guidance on adjusting the latch.

Documents / Resources

	EOMNIA EH.866 Series Handle Sets [pdf] Installation Guide EH.8668, EH.8669, EH.8688, EH.866 Series Handle Sets, EH.866 Series , Handle Sets, Sets
---	--

References

- [User Manual](#)

EH.866 Series, EH.866 Series Handle Sets, EH.8668, EH.8669, EH.8688, EOMNIA, Handle Sets, EOMNIA Sets

Leave a comment

Your email address will not be published. Required fields are marked *

Comment *

Name

Email

Website

☐ Save my name, email, and website in this browser for the next time I comment.

Post Comment

Search:

e.g. whirlpool wrf535swhz

Search

[Manuals+](#) | [Upload](#) | [Deep Search](#) | [Privacy Policy](#) | [@manuals.plus](#) | [YouTube](#)

This website is an independent publication and is neither affiliated with nor endorsed by any of the trademark owners. The "Bluetooth®" word mark and logos are registered trademarks owned by Bluetooth SIG, Inc. The "Wi-Fi®" word mark and logos are registered trademarks owned by the Wi-Fi Alliance. Any use of these marks on this website does not imply any affiliation with or endorsement.