

## EnvisionLED Track and Live End



# EnvisionLED Track and Live End Installation Guide

[Home](#) » [EnVisionLED](#) » EnvisionLED Track and Live End Installation Guide 

### Contents

- [1 EnvisionLED Track and Live End](#)
- [2 Product Information](#)
- [3 Product Usage Instructions](#)
- [4 Safety Precautions](#)
- [5 Installation](#)
  - [5.1 Wiring Diagram](#)
  - [5.2 Installation for Track](#)
  - [5.3 Installation Instructions for Live End Connector](#)
- [6 Circuit Floating Canopy](#)
- [7 Documents / Resources](#)
  - [7.1 References](#)



## EnvisionLED Track and Live End



## Product Information

### Product Specifications:

- **Model:** Track & Live End Installation Fitting
- **Compatibility:** H Track Systems Only
- **Manufacturer:** Envision LED Lighting
- **Website:** [www.envisionledlighting.com](http://www.envisionledlighting.com).

## Product Usage Instructions

### Installation:

Before starting the installation process, please ensure you have read and understood the provided instructions thoroughly. If you are not experienced with electrical wiring, it is recommended to hire a qualified licensed electrician for the installation.

### Track Installation:

1. Switch off the power before beginning the installation.
2. Insert the connector into the track in the specified direction. Ensure it matches the track's 3 wire contacts.
3. If the connector does not push in, flip it instead of forcing it.

### Live End Connector Installation:

1. Remove the plastic and metal cover from the junction box by loosening the cover screw.
2. Connect the black power cord to the live terminal (L) and the white power cord to the neutral terminal (N).
3. Connect the yellow/green earth wire as indicated in the provided figure.
4. Replace the plastic and metal covers and connect the power feed to the track.

### Circuit Floating Canopy Installation:

1. Fasten the mounting strap to the outlet box and connect the ground wire.

2. Locate the track below the outlet box in the desired position.

**Note:**

Specifications and dimensions are subject to change without notice.

**Frequently Asked Questions (FAQ):**

- **Q: Can I install this product near a heat source?**

A: No, it is advised not to install the product near a heat source or in a corrosive gas environment.

- **Q: Do I need a professional electrician for installation?**

A: Yes, it is recommended to have a professional electrician handle the installation and maintenance of this product for safety reasons.

**Safety Precautions**

When installing or using this track product, basic safety precautions should always be followed, including the following:

1. Read all instructions
2. Do not cut any track sections.
3. For indoor use only. Do not install this track in damp locations.
4. Do not install any part of a track system less than 5 feet above the floor.
5. Do not install any luminaire assembly closer than 6 inches from any curtain, or similar combustible material.
6. Turn off power before installation or before doing any maintenance work.
7. Do not exceed the nominal supply voltage or amperage ratings.
8. Do not attempt to energize anything other than lighting track luminaires on the track. To reduce the risk of fire and electric shock, do not attempt anything other than lighting track luminaires on the track. To reduce the risk of fire and electric shock, do not attempt to connect power tools, extension cords, appliances and the light to the track.
9. Do not connect a track to more than one branch circuit unless the track is constructed so that it can be used with more than one branch circuit. Check with a qualified electrician. Although the track lighting system may seem to operate acceptably.
10. Wear rubber-soled shoes and work on a sturdy wooded or non-conductive ladder.
11. The product must be mounted in location and at height in a manner consistent with its intended use and compliance with the National Electrical Code and local building codes.

**Installation**

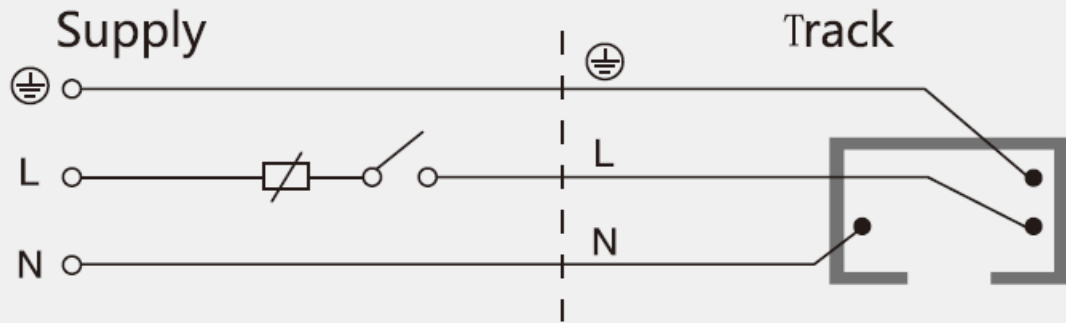
**WARNING**

1. Switch off before installation.
2. Switch on only after complete installation and examination of the circuit.
3. Professional electrician for installation and maintenance only.

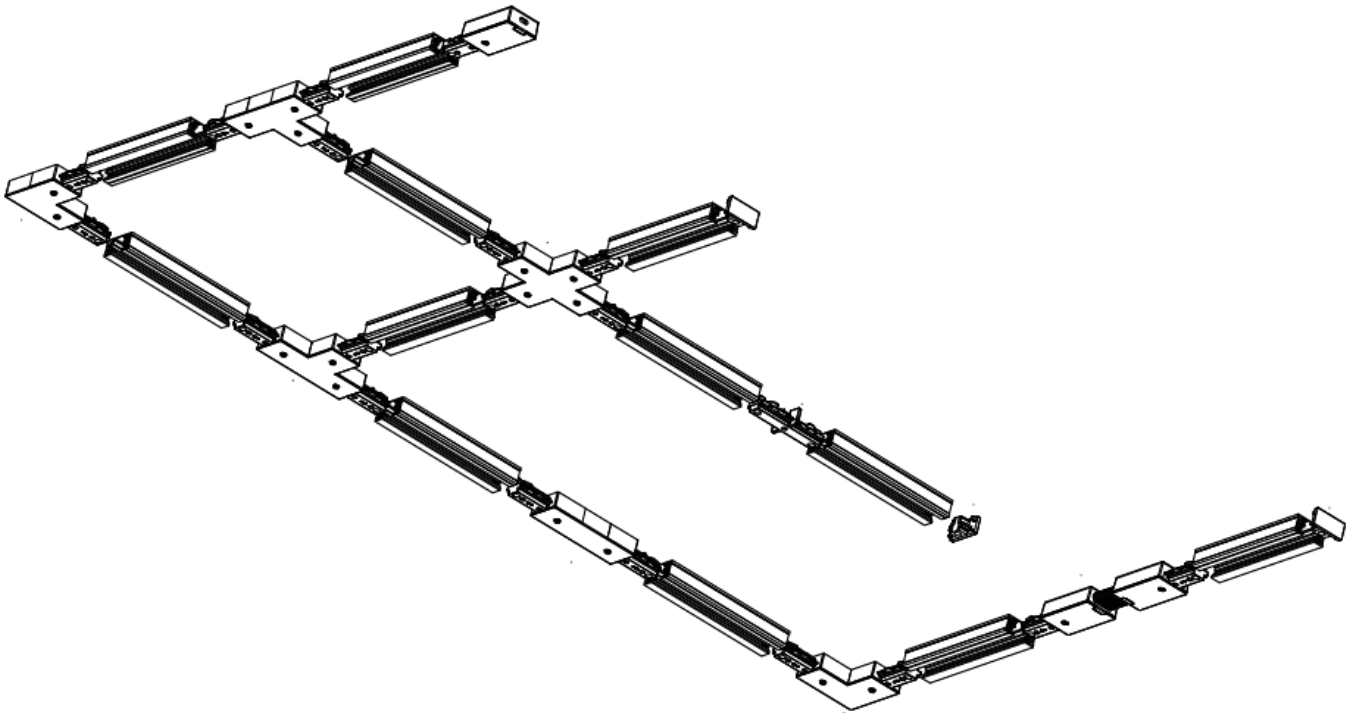


## Wiring Diagram

### 3-wires, 1-circuit



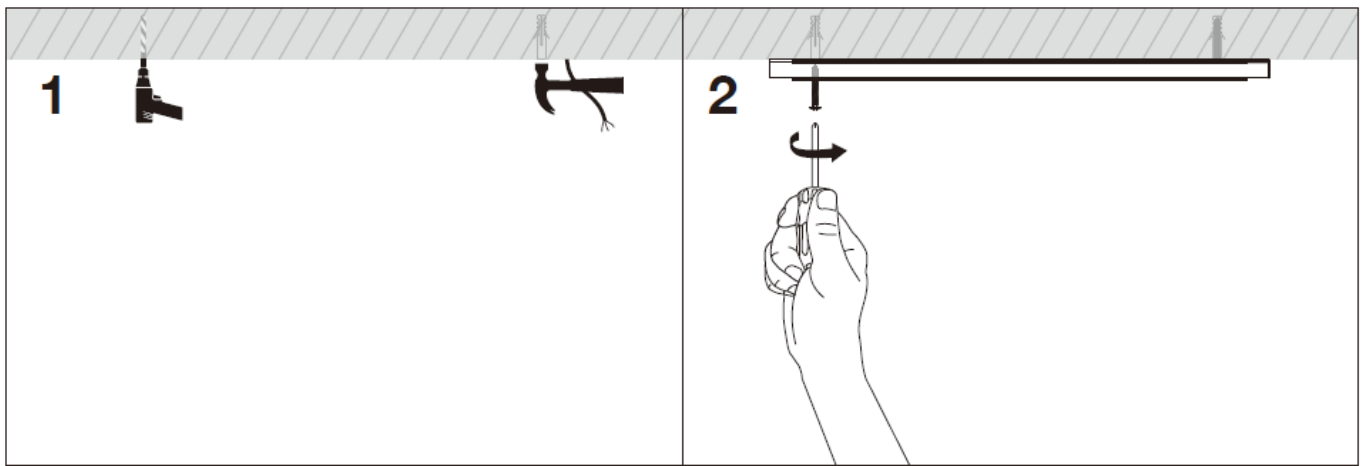
1-phase, 1-circuit, 120V AC, 20A , 3.7kVA



#### NOTE

Do not install in a place near a heat source, or a corrosive gas environment.

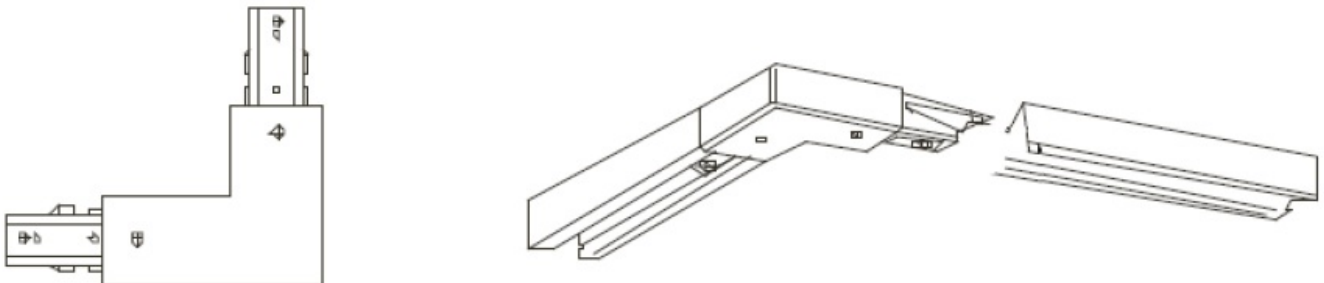
#### Installation for Track



**Read and understand these instructions completely before installing this fitting.**

- If you are unfamiliar with electrical wiring, have a qualified licensed electrician install this fitting for you.
- It is advisable to keep these instructions in a safe place for future reference. If these fittings are installed by a contractor, the contractor should ensure that the customer has a copy of these instructions.
- Shut off electrical power at the fuse or circuit breaker panel.
- **Important Note:** Install the connector by inserting it into the track in a specific direction.
- Usually make sure that the connector direction matches the track's 3 wire contracts.
- If it does not push in flip the connector, DO NOT FORCE IT IN.

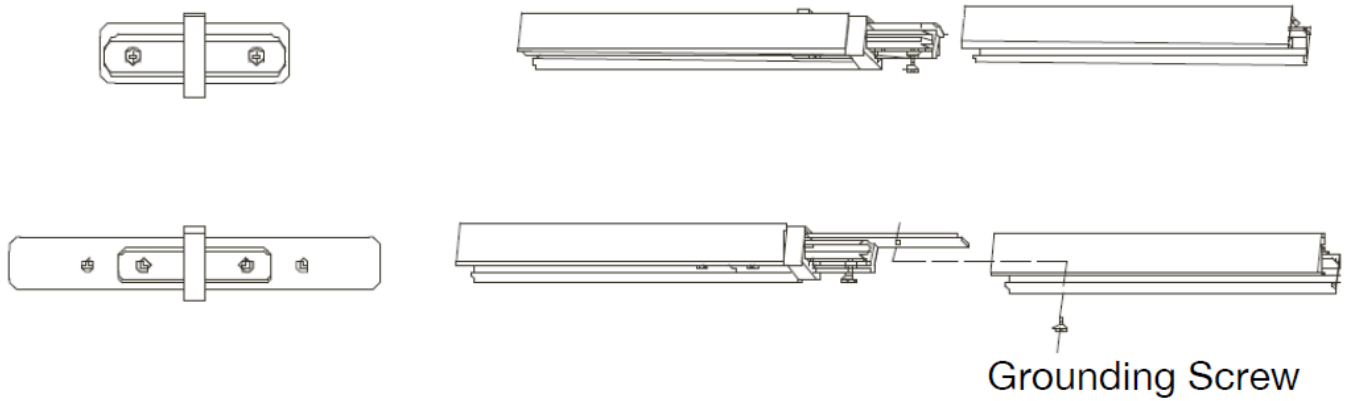
#### **Installation for “L” Connector**



- To connect two track sections into a “L” configuration
- Push track sections into a “L” connector
- Assemble the LIVE wire to the “L” position
- Assemble the NEUTRAL wire to the “N” connector

#### **Installation for “I” Connector**

For use with “H” Track Systems Only



- A low profile connector to cleanly and crisply join two straight track sections end to end.
- Remove the grounding screws
- Push track sections into a “L” connector
- Screw in the grounding and dimensions into the track sections

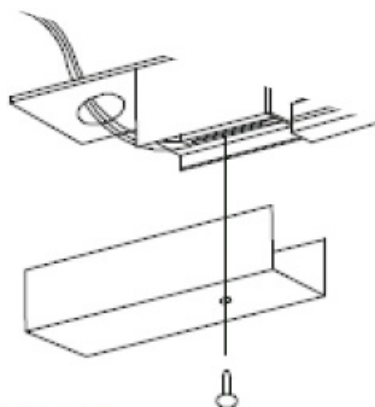
**NOTE:**

Specifications and dimensions are subject to change without notice.

**Installation Instructions for Live End Connector**

**PREPARATIONS**

- Read and understand these instructions completely before installing this fitting. If you are unfamiliar with electrical wiring, have a qualified licensed electrician install this fitting for you. It is advisable to keep these instructions in a safe place for future reference. If these fittings are installed by a contractor, the contractor should ensure that the customer has a copy of these instructions.
  - Shut off electrical power at the fuse or circuit breaker panel.
1. Remove the plastic and metal cover from the junction box by losing the cover screw as in Figure 1.
  2. Connect the black power cord with the live terminal (L).
  3. Connect the white power cord with the neutral terminal (N).
  4. Connect the yellow/green earth wire as in Figure 2.

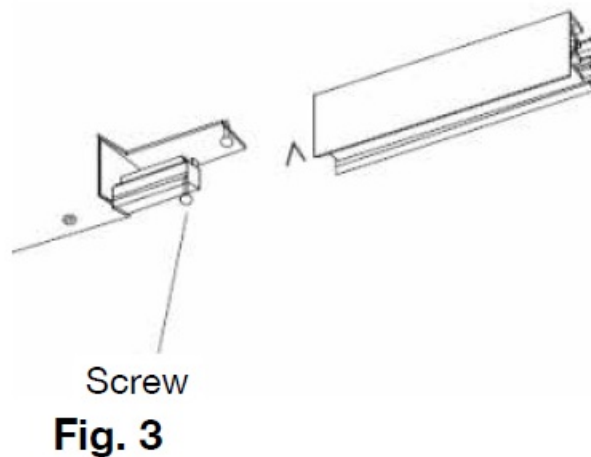
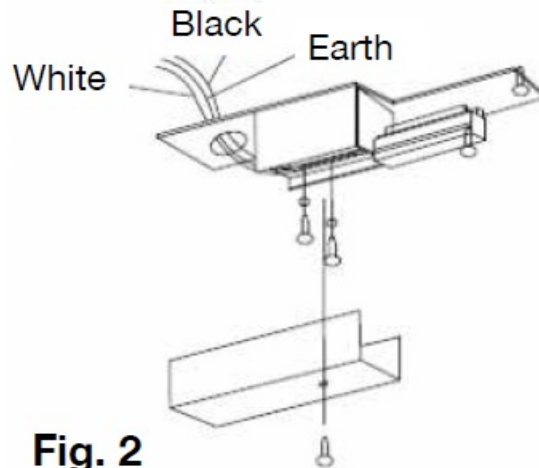


**Fig. 1**

**Note:** Since the conduit opening has a sharp edge, all the wiring connected to the feed should be through the

conduit.

5. Replace plastic and metal covers. Connect the power feed with the track as in Figure 3.
6. Connect live terminal “L” power cord to “L” connector.
7. Connect neutral terminal “N” power cord to “N” connector



- **Important Note:** Install the connector by inserting it into the track in a specific direction.
- Usually make sure that the connector direction matches the track’s 3 wire contracts.
- If it does not push in flip the connector, DO NOT FORCE IT IN. Specification and dimensions are subject to change with notice.

## Circuit Floating Canopy

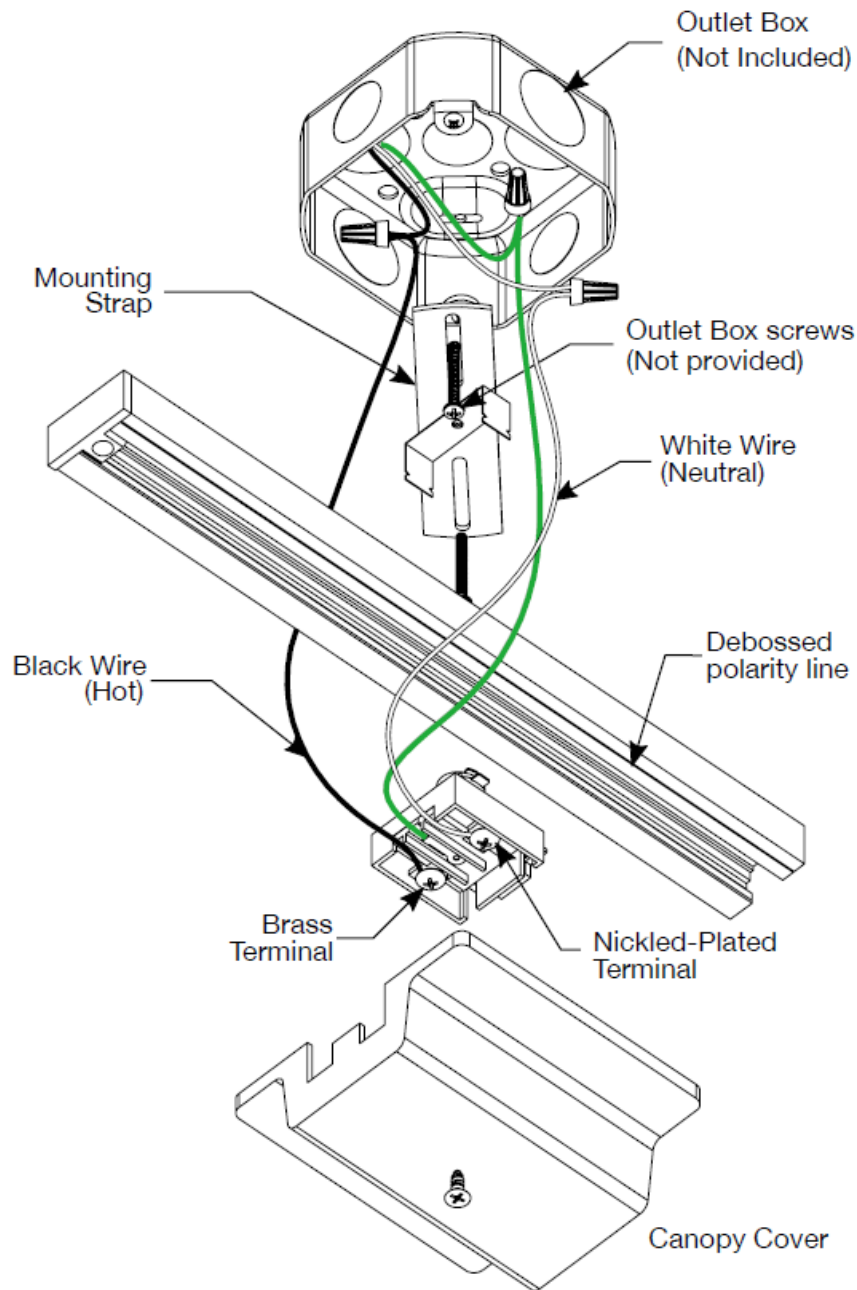
### INSTRUCTIONS:

1. Fasten the mounting strap to the outlet box. Connect ground wire.
2. Locate the track below the outlet box in the desired position:
  - Rotate the ground clip to accept the track and push the track into the clip
  - Fasten track to ceiling following instructions supplied with the track section
  - Track ends must be terminated with either a dead end or a connector,
3. Insert the electrical adapter into the track, and rotate 90° to the locked position to make electrical contact.

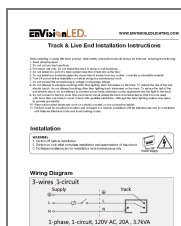
### NOTE:

- The polarity side of the electrical adaptor (The side of the grounding tab or marked “N”) must point to track debossed polarity line.

- The Center line of the electrical adaptor must be set on the centre line of the outlet box.
4. Pull the positive (Black) wire from the outlet box and attach it to the brass screw terminal marked “P”. Pull the neutral (White) wire, on the opposite of the track, and attach it to the nickel-plated screw terminal marked “N”. Push excess wire back into outlet box-wire must hug trackside. Install the cover and secure it with the screw.



## Documents / Resources



[EnvisionLED Track and Live End \[pdf\] Installation Guide](#)  
Track and Live End, Track End, Live End

## References

- [LED Envision Led - Envision LED Lighting](#)
- [User Manual](#)

[Manuals+](#), [Privacy Policy](#)

This website is an independent publication and is neither affiliated with nor endorsed by any of the trademark owners. The "Bluetooth®" word mark and logos are registered trademarks owned by Bluetooth SIG, Inc. The "Wi-Fi®" word mark and logos are registered trademarks owned by the Wi-Fi Alliance. Any use of these marks on this website does not imply any affiliation with or endorsement.