

environment V6 Fast Track Thermal Range Ducting



envirovent V6 Fast Track Thermal Range Ducting Instructions

[Home](#) » [envirovent](#) » [envirovent V6 Fast Track Thermal Range Ducting Instructions](#) 

Contents

- 1 [environment V6 Fast Track Thermal Range Ducting](#)
- 2 [Airtight mechanical connections are](#)
- 3 [APPROVED DOCUMENT F VOLUME 1, 2021 EDITION](#)
- 4 [FAST TRACK DUCTING RANGES](#)
- 5 [The Complete Semi-Rigid Solution](#)
- 6 [Distribution Boxes](#)
- 7 [Configuration Example & Options](#)
- 8 [Documents / Resources](#)
 - 8.1 [References](#)
- 9 [Related Posts](#)



environment V6 Fast Track Thermal Range Ducting



Specifications

- Fast Track Ducting Ranges available: Fast Track – Semi Rigid Ducting, Fast Track Plus – Semi Rigid Ducting, Fast Track Thermal – Thermal Ducting
- Various ducting options including circular and oval shapes indifferent sizes
- Click and connect installation system with antibacterial and antistatic lining
- Minimal energy consumption and noise hindrance
- Airtight connections for efficient ventilation

Fast Track – Semi Rigid Ducting:

This ducting option offers easy installation with click and connect feature. It includes antibacterial and antistatic lining, minimizing energy consumption and noise hindrance. Follow the specific instructions for two-way and three-way valve adaptors as needed.

Fast Track Plus – Semi Rigid Ducting:

With different distribution boxes for flexibility, this ducting is available in circular and oval rolls. Use stepped adaptors for connecting to different ducting sizes. Ensure airtight connections for optimal performance. Floor grilles are provided for alternative installation options.

Fast Track Thermal – Thermal Ducting:

This ducting features patented self-sealing connections with circular and rectangular options available. Follow the click and lock mechanism for secure installations. Choose appropriate duct sizes for your specific requirements.

Frequently Asked Questions (FAQ):

Q: How do I ensure airtight connections with the Fast Track ducting?

A: Use the provided mechanical fixings such as rigid connectors and jubilee clips for flexible ducting. Additionally, apply a low modulus non-hardening sealant to seal connections properly.

Fast Track – Our Complete ducting solution

Don't blame the installers, just make it easier for them!

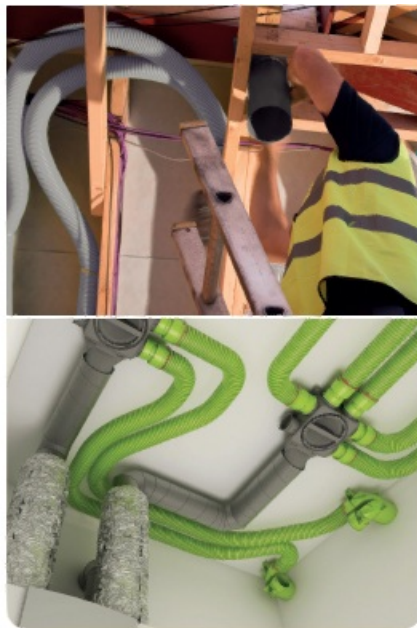
- EnviroVent believes that quality ductwork should not be dependent upon highly qualified installers and regulatory measures.
- Therefore, we introduced ventilation ductwork, which can be installed very easily and quickly, even by less qualified and experienced installers and is airtight by definition.

Ductwork is the Achilles heel of mechanical ventilation units

Poorly designed ductwork results in high pressure drops.

Unsealed connections result in high air leakage.

Both result in higher energy consumption and noise hindrance, as the ventilation units have to work harder to ventilate 'right' (although some installers don't seal connections, they should).



Using non-hardening sealant, mechanical fixings & ideally tape to seal connections, can be:

-



Messy and wasteful

- Takes a lot of time to do it properly,
- i.e. costly
- Not only tape – two forms of mechanical fixing. Jubilee clips and rigid connectors for flex, plus a low modulus non-hardening sealant is also required

- Makes it difficult to achieve a high and consistent quality airtight seal

Airtight mechanical connections are

- Clean and there's no waste
- Extremely easy and quick to install – it only takes a couple of seconds
- Highest and most consistent quality airtight seal possible
- Sustainable airtight connection

APPROVED DOCUMENT F VOLUME 1, 2021 EDITION

1.79 Ductwork installations should be designed and installed to minimise the overall pressure losses within the system by taking all of the following steps.

- Minimising the overall length of duct.
- Minimising the number of bends required.
- Installing appropriately sized ducts for the air flow rate.

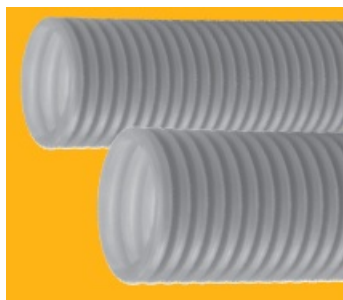
1.81 Duct connections should be both mechanically secured and adequately sealed to prevent leaks. Rigid connectors and jubilee clips should be used for flexible ducting to ensure a good seal.

The install should comply with all the relevant guidance in local regulations and should be installed by a competent person.

FAST TRACK DUCTING RANGES

FAST TRACK – SEMI RIGID DUCTING

-



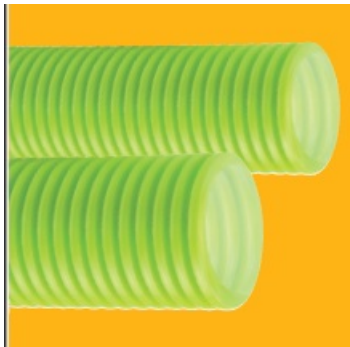
Click and connect with antibacterial and antistatic lining

- Minimal energy consumption and noise hindrance
- 75mm and 90mm circular ducting options
- Two and three-way
- valve adaptors
- Acoustic damper option
- Airtight connections
- Different distribution box sizes with 8 (90mm) and 10 (75mm) spigots
- Ducting available in 50m rolls (grey)
- Stepped adaptors for connections to different ducting sizes

- Reduced installation time no need for screws and glue
- Easy installation and removal for cleaning of ducts

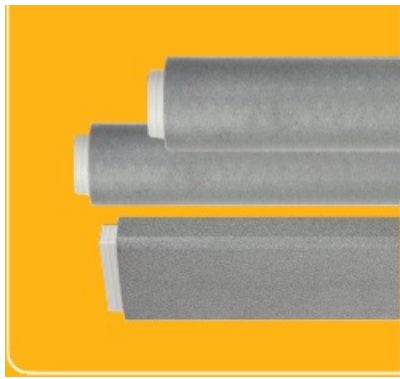
FAST TRACK PLUS – SEMI RIGID DUCTING

- Different distribution boxes available for greater flexibility
- Ducting available in 50m (circular) and 20/30m (oval) rolls
- Stepped adaptors for connections to different ducting sizes
- Reduced installation time –no need for screws and glue
- Easy installation and removal for cleaning of ducts
- Click and connect with antibacterial and antistatic lining
- Minimal energy consumption and noise hindrance
- 75mm and 90mm circular ducting options
- 102 x 50mm and 136 x 60mm oval ducting options
- Airtight connections
- Floor grilles for alternative installation options



FAST TRACK THERMAL – THERMAL DUCTING

- Click and lock patented self-sealing connections
- 125mm and 160mm circular ducting options
- 204 x 60mm rectangular ducting option
- Airtight connections
- Ducting is available in 1m or 2m lengths, easily cut to size
- High thermal properties,
- minimising heat loss
- Connectors, bends, and t-pieces available
- No need for screws and glue
- Easy installation and removal for cleaning of ducts



FAST TRACK RIGID – SELF-SEAL COUPLERS

- 204 x 60mm rectangular option
- Reduces the installation time
- No need for screws and glue
- Easy removal for cleaning of ducts
- Self-seal couplers
- Push fit airtight connections
- For use with rigid 'trunk and branch' PVC ducting
- 125mm circular option



The Complete Semi-Rigid Solution

The Fast Track Range is a comprehensive portfolio of ductwork and parts to make complete, energy-efficient and easy to install ventilation systems. The semi-rigid ductwork is available in various circular and semi-circular dimensions.



Air Distribution Boxes with Semi-Rigid Ducting

- Plastic = lightweight, risk-free installation
- Airtightness Class C (EN 12237)
- Circular ducting: 75mm and 90mm

- Oval ducting: 102mm x 50mm and 132mm x 60mm (Fast Track Plus only)

Stepped mass flow ducting adaptors:

- Easy post-installation access to restrictors and for maintenance
- Ø125mm, Ø160mm & Ø200mm (Fast Track only)
- Ø125mm, Ø150mm, Ø160mm and Ø180mm (Fast Track Plus only)

FAST TRACK



125/160/200mm
stepped adaptor



125/160mm
side adaptor

FAST TRACK PLUS



125/150/160/180mm
stepped adaptor

For more
information about
our range of ducting
and ancillaries
**CALL US ON
01423 810 810**

Distribution Boxes

FAST TRACK

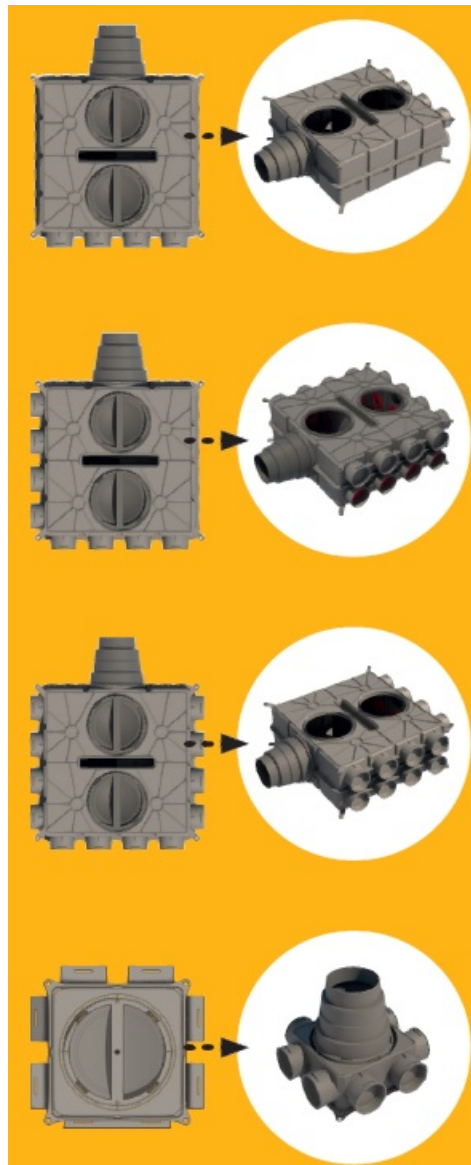


75mm 10 spigot
distribution box



90mm 8 spigot
distribution box

FAST TRACK PLUS



Configuration Example & Options

FAST TRACK ONLY

Vertical stack configuration



75mm three-way valve adaptor



90mm two-way valve adaptor



125mm acoustic damper



End cap



Connector



Horizontal stacking couplers



Vertical stacking couplers

Documents / Resources



[envirovent V6 Fast Track Thermal Range Ducting](#) [pdf] Instructions
V6 Fast Track Thermal Range Ducting, V6, Fast Track Thermal Range Ducting, Track Thermal Range Ducting, Thermal Range Ducting, Range Ducting

References

- [User Manual](#)

[Manuals+](#), [Privacy Policy](#)

This website is an independent publication and is neither affiliated with nor endorsed by any of the trademark owners. The "Bluetooth®" word mark and logos are registered trademarks owned by Bluetooth SIG, Inc. The "Wi-Fi®" word mark and logos are registered trademarks owned by the Wi-Fi Alliance. Any use of these marks on this website does not imply any affiliation with or endorsement.