



envirovent QURO Listed Low Noise Decentralised Mechanical Extract User Guide

[Home](#) » [envirovent](#) » envirovent QURO Listed Low Noise Decentralised Mechanical Extract User Guide 

envirovent QURO Listed Low Noise Decentralised Mechanical Extract



Contents

- [1 Introduction](#)
- [2 Product Data](#)
- [3 Dimensional Drawing](#)
- [4 Photometric Data](#)
- [5 Lifetime](#)
- [6 Customer Support](#)
- [7 Documents / Resources](#)
 - [7.1 References](#)
- [8 Related Posts](#)

Introduction

Philips FlexFit (Hybrid UL Type A + B) lamps are designed with the customer in mind for installation flexibility. The FlexFit lamp can operate as both a plug and play (UL Type-A) and double-ended direct wire (UL Type-B). As with all Philips products, the FlexFit family of lamps are compatible with more ballasts than any manufacturer giving the customer peace of mind during installation. Additionally, the long life (50K hours) delivers reduced maintenance

and replacement costs. If the ballast should fail, simply cut the ballast from the system and wire the tube directly to line voltage (120-277V)!

Product Data

General Information

Cap-Base	G13
Nominal lifetime	50,000 hour(s)
Switching Cycle	50,000
Lighting Technology	LED

Light Technical

Color Code	3000K/3500K/4000K/5000K/6500K
Beam Angle (Nom)	220 degree(s)
Luminous Flux	1,700 1,700 1,800 1,800 1,800 lm
Color Designation	3000K/3500K/4000K/5000K/6500K
Luminous Efficacy (rated) (Nom)	144 lm/W
Correlated Color Temperature (Nom)	3000 3500 4000 5000 6500 K
Color Consistency	<6
Color rendering index (CRI)	80
LLMF At End Of Nominal Lifetime (Nom)	70 %

Operating and Electrical

Input Frequency	50 to 60 Hz
Power Consumption	12
Lamp Current (Max)	115 mA
Lamp Current (Min)	50 mA
Wattage Equivalent	32 W
Starting Time (Nom)	0.5 s
Warm-up time to 60% light	0.5 s
Power Factor (Fraction)	0.9
Voltage (Nom)	120-277 V
UL Type	UL Type A+B

Temperature

Ambient temperature range	-4 to +113 °F
T-Case Maximum (Nom)	131 °F

Controls and Dimming

Dimmable	Only with specific dimmers
----------	----------------------------

Mechanical and Housing

Bulb Finish	Frosted
Bulb Material	Plastic
Product Length	47-1/4 inch
Bulb Shape	T8

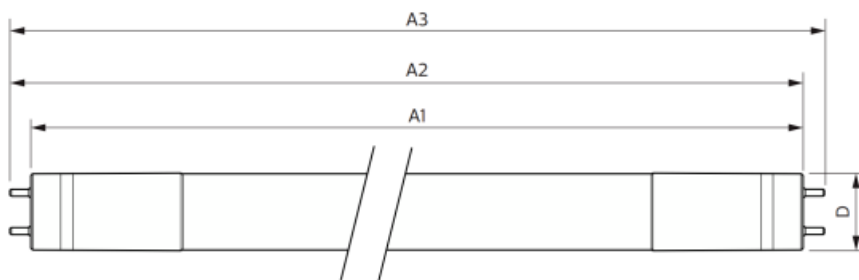
Application Conditions

can it be used in closed luminaires	Yes
-------------------------------------	-----

Product Data

Order product name	12T8/COR/48-5CCT/FF18/G/DIM 25/1
Full product name	12T8/COR/48-5CCT/FF18/G/DIM 25/1
Order code	588640
Material № (12NC	929003794704
Numerator – Quantity Per Pack	1
Net Weight (Piece)	0.5 lb
EAN/UPC – Product/Case	046677588649
Numerator – Packs per outer box	25
EAN/UPC – Case	50046677588644

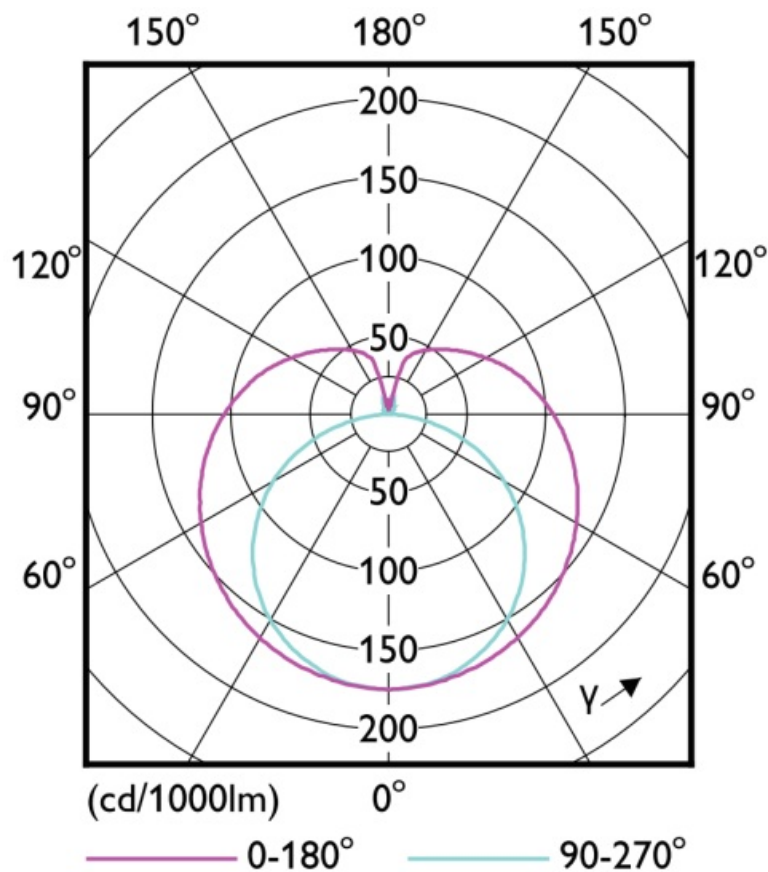
Dimensional Drawing



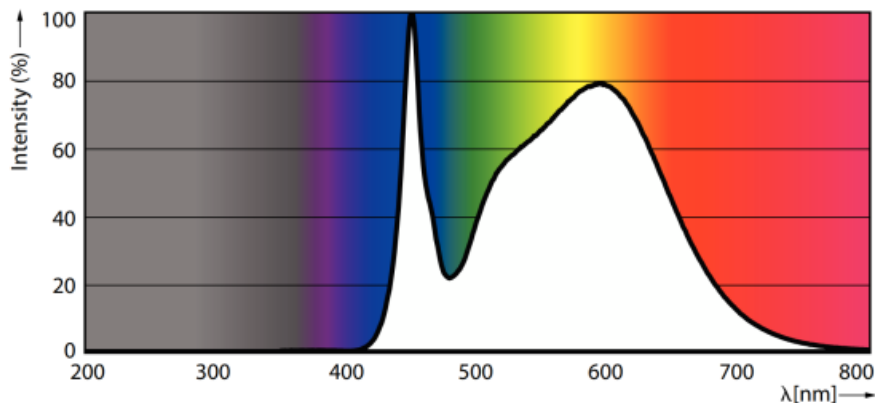
Product	D1	D2	A1	A2	A3
12T8/COR/48-5CCT/ FF18/G/ DIM 25/1	1-1/16 inch	1-1/8 inch	47-3/16 inch	47-1/2 inch	47-3/4 inch

Photometric Data

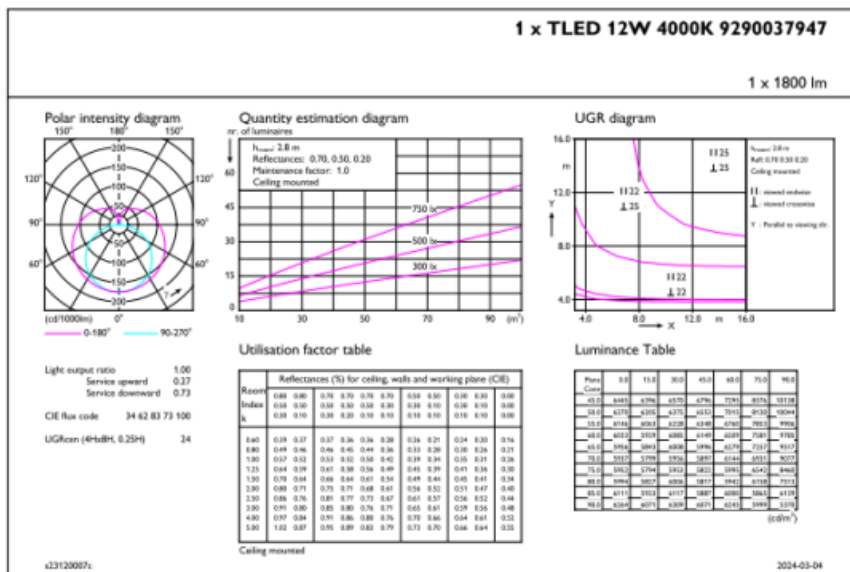
- **Light Distribution Diagram – 12T8/COR/48-5CCT/FF18/G/DIM 25/1**



• Spectral Power Distribution Colour – 12T8/COR/48-5CCT/FF18/G/DIM 25/1

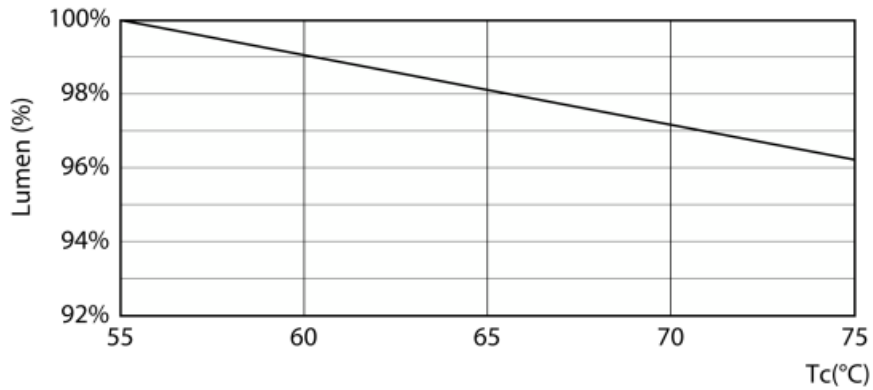


• General uniform lighting – 12T8/COR/48-5CCT/FF18/G/DIM 25/1

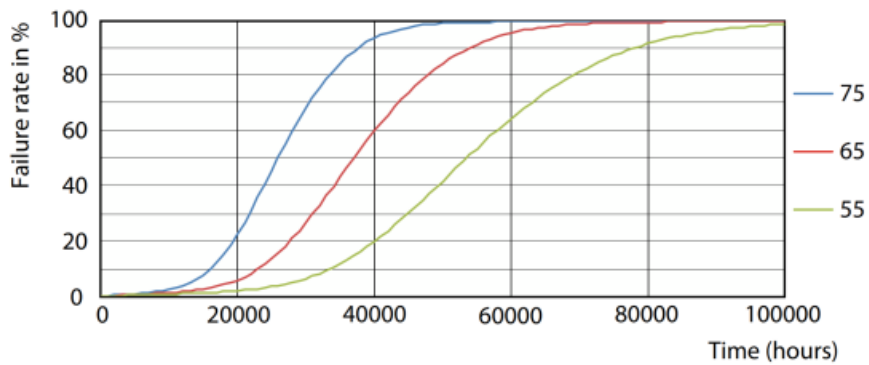


Lifetime

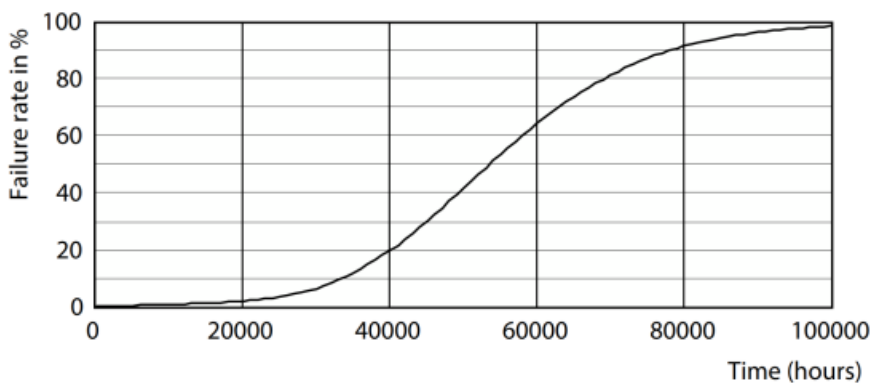
- Lumen Maintenance Diagram – 12T8/COR/48-5CCT/FF18/G/DIM 25/1



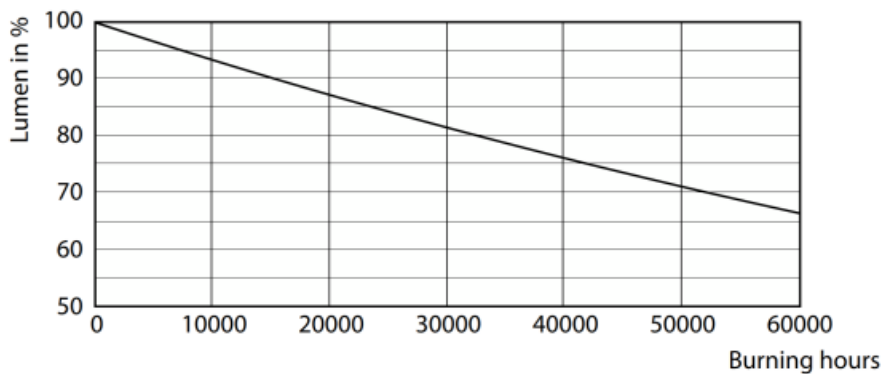
- FailureRate



- Life Expectancy Diagram

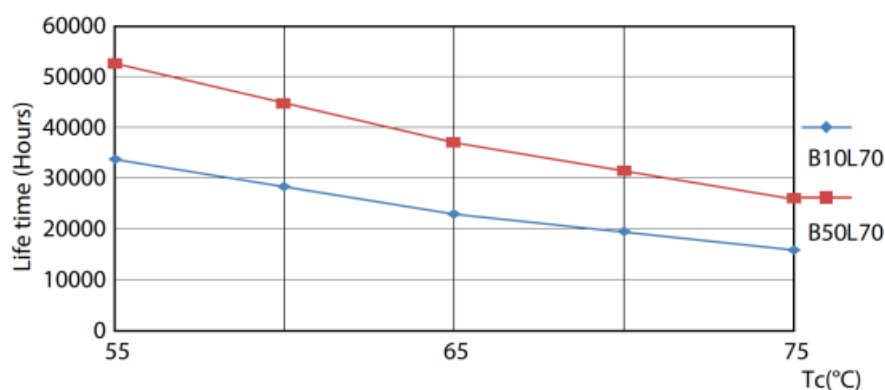


- Lumen Maintenance Diagram – 12T8/COR/48-5CCT/FF18/G/DIM 25/1



- LifetimeVsTc

Lifetime



Customer Support



© 2024 Signify Holding All rights reserved. Signify does not give any representation or warranty as to the accuracy or completeness of the information included herein and shall not be liable for any action in reliance thereon. The information presented in this document is not intended as any commercial offer and does not form part of any quotation or contract, unless otherwise agreed by Signify. Philips and the Philips Shield Emblem are registered trademarks of Koninklijke Philips N.V.

www.lighting.philips.com

2024, March 15 – data subject to change



Documents / Resources



[envirovent QURO Listed Low Noise Decentralised Mechanical Extract](#) [pdf] User Guide
QURO Listed Low Noise Decentralised Mechanical Extract, QURO, Listed Low Noise Decentralised Mechanical Extract, Low Noise Decentralised Mechanical Extract, Decentralised Mechanical Extract, Mechanical Extract, Extract

References

- [User Manual](#)

[Manuals+](#), [Privacy Policy](#)

This website is an independent publication and is neither affiliated with nor endorsed by any of the trademark owners. The "Bluetooth®" word mark and logos are registered trademarks owned by Bluetooth SIG, Inc. The "Wi-Fi®" word mark and logos are registered trademarks owned by the Wi-Fi Alliance. Any use of these marks on this website does not imply any affiliation with or endorsement.