



envirovent Energisava 200 Ceiling Mounted Version User Guide

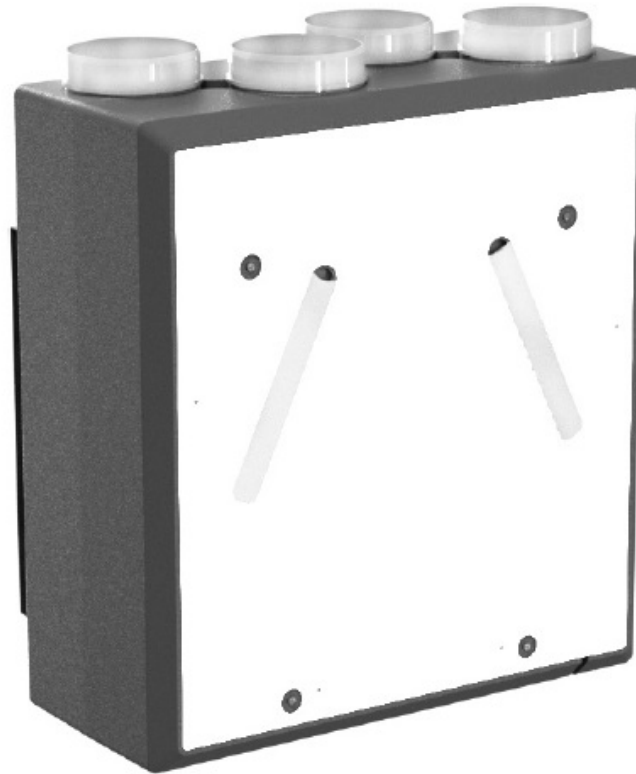
[Home](#) » [envirovent](#) » envirovent Energisava 200 Ceiling Mounted Version User Guide 

Contents

- [1 envirovent Energisava 200 Ceiling Mounted Version](#)
- [2 Home Ventilation](#)
- [3 Remote Control Versions](#)
- [4 Warranty](#)
- [5 Documents / Resources](#)
 - [5.1 References](#)
- [6 Related Posts](#)

envirovent®

envirovent Energisava 200 Ceiling Mounted Version



Home Ventilation

energisava® 200 Whole House Heat Recovery System

What is it and why is it there?

The energisava® 200 is a centralised heat recovery fan unit that continuously removes stale, moist air from your bathroom, kitchen, WC and replaces it with clean fresh tempered air through circular valves mounted in your ceiling and in your living room areas.

how will it help?

It will prevent the build up of moisture in the house, remove steam/condensation and odours during bathing and cooking, prevent black mould forming on the walls, behind cupboards etc. It will also help stop the dampness that you can get in your cupboards and wardrobes, on your clothes and furnishings, caused by poor ventilation. It provides continuous, all year round ideal indoor air quality.

How do I control it?

The system operates continuously 24 hours a day at a low rate known as 'trickle', to ensure your home is ventilated at the appropriate level. You can send the system into a higher rate called 'boost' in a number of ways.

Remote Control Versions

Press the button once to see the current status of your unit and again to boost the unit. The boost LED will light and the unit will go to boost for 20 minutes. When the battery requires changing, unclip the switch front cover. The battery is located on the back of the cover. Battery type – AAA x 2.

App Control Versions

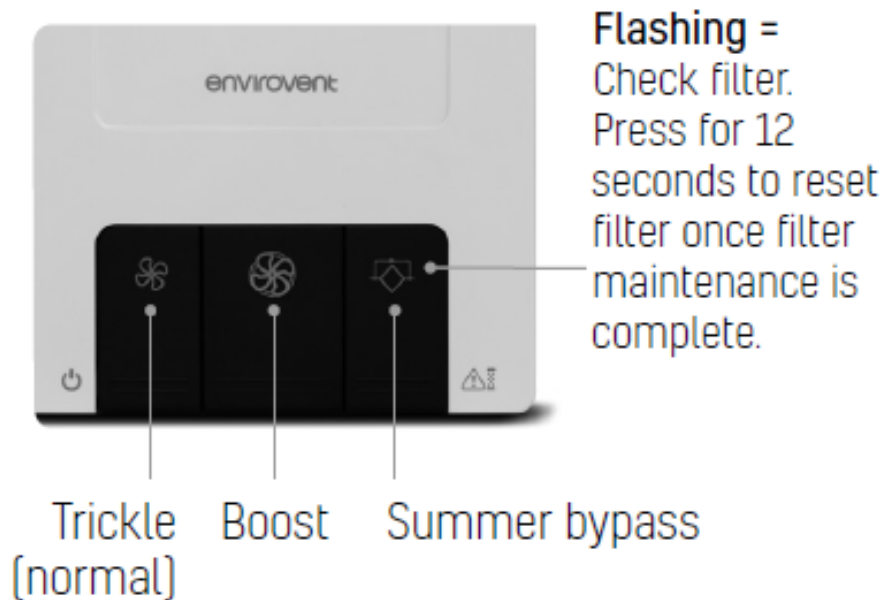
For App control versions see the separate App instruction booklet. App-controlled units allow a large degree of control over the unit via a smart device. For SSID and password information, see the back page of the installation guide, or underside of unit.

Summer bypass

The summer bypass helps reduce the air temperature coming into the dwelling during the summer months. It is an automatic function and operates by diverting air around the heat recovery cell when the supply air temperature to the property is above 25°C.

Running Costs

The approximate annual running costs of the enviSava® 200 is £15.97 for an apartment (kitchen and bathroom) and £21.02 for a house (kitchen, bathroom and WC). All costs are based on an electricity cost of £0.15 per unit (kWh) running on 2 hours boost per day and SAP Appendix Q data. These calculations must be used as a guide only.



Note: All flash indicates a unit fault.

Warranty

The EnviroVent enviSava® 200 is covered by a full 2 year warranty. You will find the terms of warranty in the installation guide.

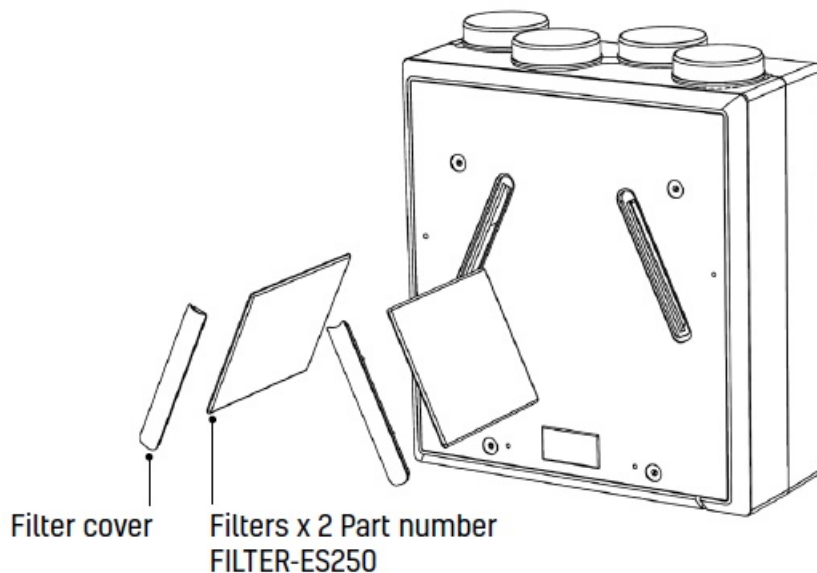
- **DO NOT** switch off the unit – The unit is set to run continuously 24 hours a day, 7 days a week.
- **DO NOT** adjust the ceiling valves – The valves are set to allow a certain amount of air through and should not be adjusted.

Maintenance

Recommended maintenance schedule: The following checks are recommended to ensure that this heat recovery system operates at its optimum level. Yearly maintenance and checks – To be carried out by the user or maintenance company.

- Check there is sufficient airflow coming through the diffusers.
- Change filters x 2 (see illustration below)

Call EnviroVent on 0345 27 27 810 – Filter part code is FILTER-ES250.



Two Year Service

The unit should be serviced every 2 years by EnviroVent, a maintenance company or other competent person. This would include filter replacements, air flow and a condense drain check. Any worn out components can then be exchanged. These would then be brought back to the Harrogate factory to be recycled.

Safety


You do not need to remove the covers from the unit, any repair work should be carried out by a qualified person to avoid hazard. If the supply cord is damaged, it must be replaced by the manufacturer, service agent or similarly qualified person.

Emergency shutdown details – Unit to be isolated from the mains by turning it off at the isolating switch.

We want to hear from you

Your feedback is important to us as we strive to improve our products, services, and overall customer experience. Please email us to help us serve you better: feedback@envirovent.com

Documents / Resources

	<p>envirovent Energisava 200 Ceiling Mounted Version [pdf] User Guide Energisava 200 Ceiling Mounted Version</p>
---	--

References

- [🌐 UK Manufacturer Of Ventilation Systems & Extractor Fans | EnviroVent](#)