



ENVIRO C34 Linear Gas Fireplace Installation Guide

[Home](#) » [Enviro](#) » ENVIRO C34 Linear Gas Fireplace Installation Guide 

Contents

- [1 ENVIRO C34 Linear Gas Fireplace](#)
- [2 Product Information](#)
- [3 Product Usage Instructions](#)
- [4 Minimum Framing Dimensions](#)
- [5 Clearance to Combustibles](#)
- [6 Minimum Venting Requirements](#)
- [7 Fireplace Dimensions](#)
- [8 Mantel Projections](#)
- [9 OPTIONAL STEP](#)
- [10 TV Installation Considerations](#)
- [11 Documents / Resources](#)
 - [11.1 References](#)
- [12 Related Posts](#)



ENVIRO C34 Linear Gas Fireplace



Product Information

Specifications

- **Model:** C34 FIREPLACE
- **Installation Reference Guide:** C-16871
- **Minimum Framing Dimensions:**
 - Depth: 20" (508 mm)
 - Width: 45" (1143 mm)
 - Header Height: 38" (965 mm)
 - Rough Opening Height: 43.5" (1105 mm)
 - Enclosure Ceiling: 65" (1651 mm)
- **Vent Size:** Co-axial 5 x 8
- **Clearance to Combustibles:**
 - A – Finishing edge to side wall: 7" (229 mm)
 - B – Minimum clearance to enclosure ceiling: 65" (1651 mm)
 - C – Minimum clearance to mantel height: See Chart
 - D – Front of the door to the edge of floor protection: 0" (0 mm)
 - E – Minimum alcove width: 50" (1270 mm)

Product Usage Instructions

Minimum Framing Dimensions

The minimum framing dimensions for the C34 FIREPLACE are as follows:

- Depth: 20" (508 mm)
- Width: 45" (1143 mm)
- Header Height: 38" (965 mm)
- Rough Opening Height: 43.5" (1105 mm)
- Enclosure Ceiling: 65" (1651 mm)

Clearance to Combustibles

The clearance to combustibles for the C34 FIREPLACE is as follows:

- A – Finishing edge to side wall: 7" (229 mm)

- B – Minimum clearance to enclosure ceiling: 65" (1651 mm)
- C – Minimum clearance to mantel height: See Chart
- D – Front of door to the edge of floor protection: 0" (0 mm)
- E – Minimum alcove width: 50" (1270 mm)

Non-Combustible Board Placement

For framing, use either metal studs or concrete boards. Non-combustible boards should be placed as follows:

- Combustible: 456 1/2
- Non-Combustible: 13 3/4

Minimum Venting Requirements

The minimum venting requirements for the C34 FIREPLACE are as follows:

- Minimum Venting Requirements: 20" (509 mm)
- Mantel Projections: 50" (1272 mm)
- Mantle Height: See Chart

CSS Front Vent – Overall Dimensions

The overall dimensions for the CSS Front Vent of the C34 FIREPLACE are as follows:

- Dimension 1: 12.18
- Dimension 2: 12.24
- Dimension 3: 1.39
- Dimension 4: 13.64
- Dimension 5: 14.92
- Dimension 6: 8.00
- Dimension 7: 0.50
- Dimension 8: 2.63
- Dimension 9: 0.88
- Dimension 10: 6.07
- Dimension 11: 8.42
- Dimension 12: 7.67
- Dimension 13: 6.17
- Dimension 14: 10.72
- Dimension 15: 9.75
- Dimension 16: 2.48
- Dimension 17: 4.65
- Dimension 18: 4.75

CSS Side Vent – Dimensions

The dimensions for the CSS Side Vent of the C34 FIREPLACE are as follows:

- Dimension 1: 36.00
- Dimension 2: 7.47

- Dimension 3: 9.75

CSS Combustible Facing Kit Dimensions

The dimensions for the CSS Combustible Facing Kit of the C34 FIREPLACE are as follows:

- Dimension 1: 26.00
- Dimension 2: 4.75
- Dimension 3: 9.95
- Dimension 4: 9.95
- Dimension 5: 9.95
- Dimension 6: .50
- Dimension 7: 2.00

CSS Outlet Dimensions

The dimensions for the CSS Outlet of the C34 FIREPLACE are as follows:

- **Min. Top and Bottom standoff:** 25/8 (6.7 cm)
- **Outlet Finished Opening Size:** C34 – 33" (83.8 cm), C44 – 43" (109.2 cm), C60 – 59" (149.9 cm)

Venting Clearances – Front Vent

The venting clearances for the front vent of the C34 FIREPLACE are as follows:

- **Minimum Ceiling:** 80" (203 cm)
- **C72 Min. Ceiling:** 91" (231 cm)

Side Brace

The side brace requirements for the C34 FIREPLACE are as follows:

- **Min. Height:** 39" (99 cm)
- **Length of 5 dia. flex vent (not supplied):** Min. Vent – 20" (50.8 cm)
- **Min. Depth:** Min. Depth

Optional Step – Cool Surface System Part 3

The optional step for the Cool Surface System Part 3 of the C34 FIREPLACE is as follows:

- **Min. Height:** C34 – 45" (114 cm), C44 – 55" (140 cm), C60 – 71" (180 cm), C72 – 83" (211 cm)

Optional Step – Cool Surface System Part 2

The optional step for the Cool Surface System Part 2 of the C34 FIREPLACE is as follows:

- **Min. Height to Ceiling:** 14.50, 15.00 (38 cm)
- **Min. to Ceiling:** 5" (12.5 cm)
- **Gap Shown:** 3/4" (2 cm)
- **Min. Ceiling Height:** 18.75" (48 cm)
- **Min. Distance to the wall from standoff:** 5.00" (13 cm)
- **Min. Distance to Ceiling:** 4.5" (11.5 cm)

- *15.75" (40 cm)

Optional Step – Cool Surface System Part 1

The optional step for the Cool Surface System Part 1 of the C34 FIREPLACE is as follows:

- Dimensions: 9 / 2 / 11 / 7 / 32 / 37 / 25 / 2 / 3 / 2 / 2 7/

FAQ

Q: What are the minimum framing dimensions for the C34 FIREPLACE?

A: The minimum framing dimensions for the C34 FIREPLACE are as follows:

- Depth: 20" (508 mm)
- Width: 45" (1143 mm)
- Header Height: 38" (965 mm)
- Rough Opening Height: 43.5" (1105 mm)
- Enclosure Ceiling: 65" (1651 mm)

Q: What is the vent size for the C34 FIREPLACE?

A: The vent size for the C34 FIREPLACE is Co-axial 5 x 8.

Q: What is the clearance to combustibles for the C34 FIREPLACE?

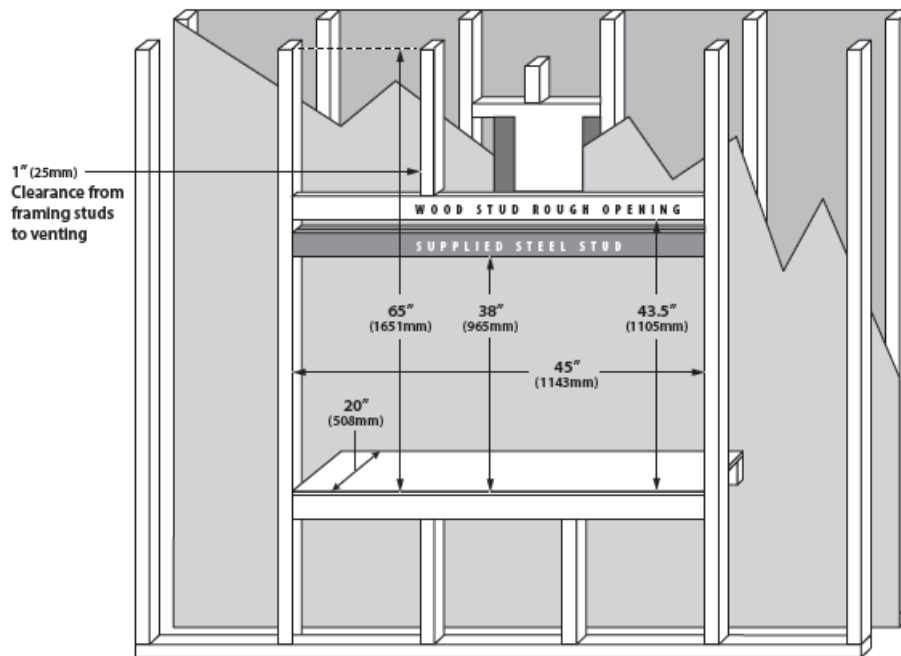
A: The clearance to combustibles for the C34 FIREPLACE is as follows:

- A – Finishing edge to side wall: 7" (229 mm)
- B – Minimum clearance to enclosure ceiling: 65" (1651 mm)

REFER TO OWNER'S MANUAL FOR SPECIFIC INSTALLATION REQUIREMENTS AND ADDITIONAL PRODUCT INSTRUCTIONS

Minimum Framing Dimensions

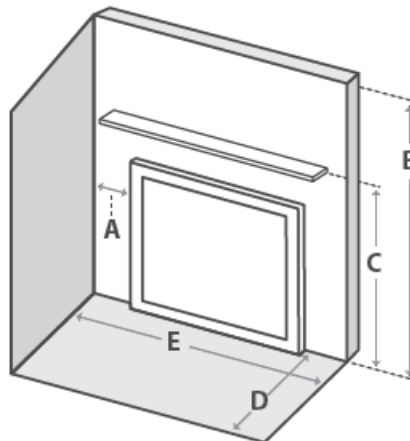
- Depth 20" 508 mm
- Width 45" 1143 mm
- Header Height 38" 965 mm
- Rough Opening Height 43.5" 1105mm
- Enclosure Ceiling 65" 1651 mm



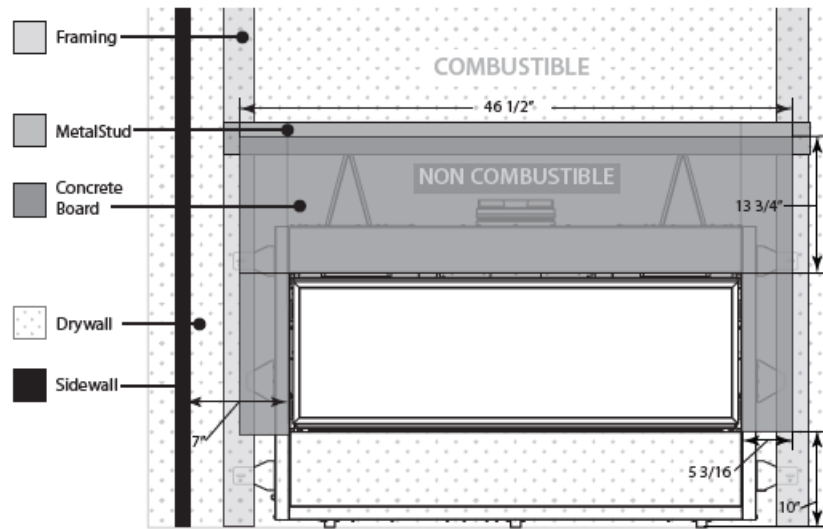
Note: Vent size = Co-axial 5 x 8"

Clearance to Combustibles

- A – Finishing edge to the side wall 7" 229mm
- B – Minimum clearance to enclosure ceiling 65" 1651 mm
- C – Minimum clearance to mantel height See Chart See Chart
- D – Front of the door to the edge of floor protection 0" 0 mm
- E – Minimum alcove width 50" 1270 mm

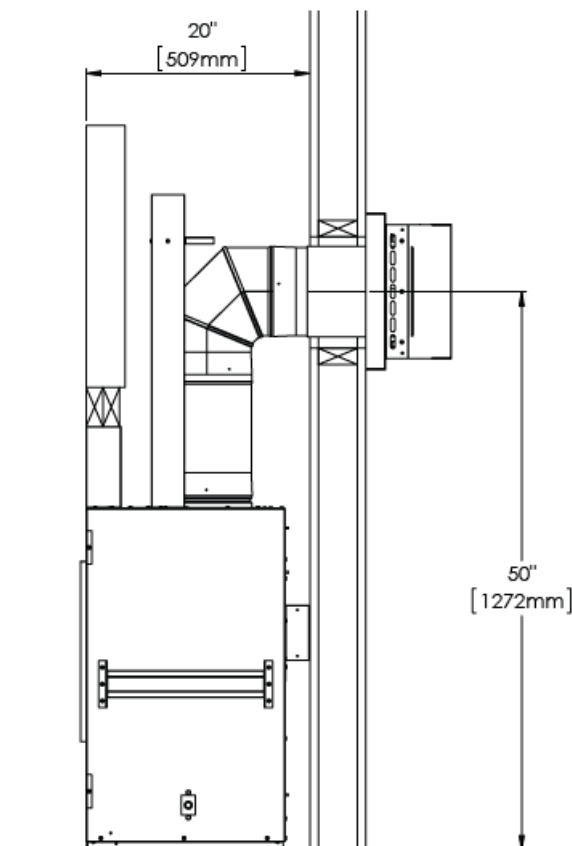


Non-Combustible Board Placement

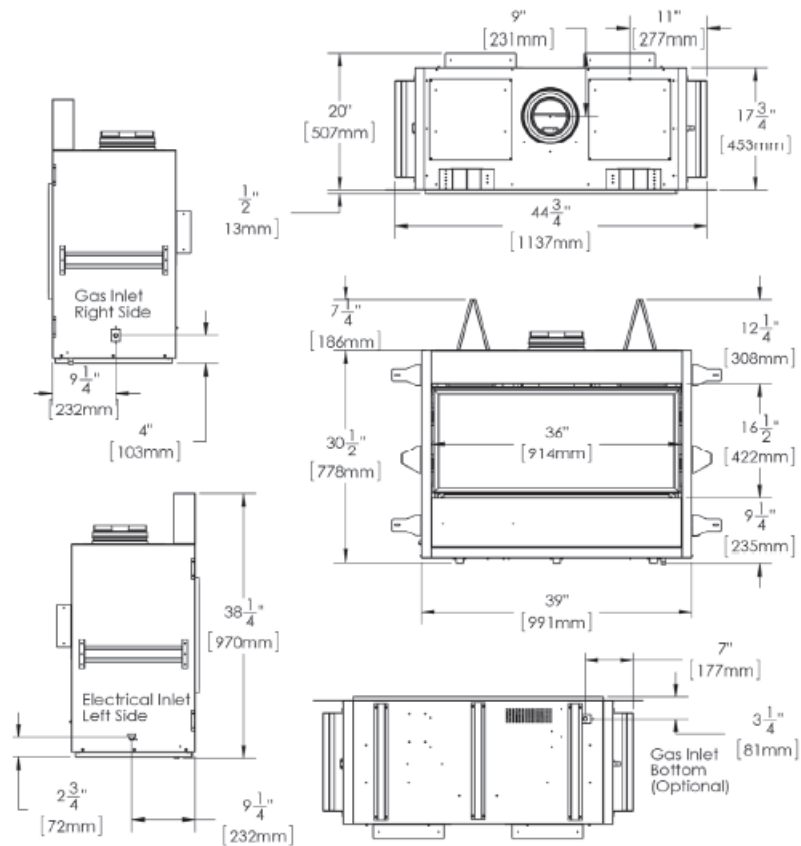


Minimum Venting Requirements

The minimum permitted venting is shown below. The framing height to the center of the thimble is 50". Minimum venting must include a 12" vertical section and a 90-degree elbow which is then terminated horizontally. For a vertical termination please follow the vent pipe manufacturer's installation instructions for vertical vent termination framing. A minimum of 1 in. (25 mm) clearance on all sides of the vertical vent pipe must be maintained. For every 12" of horizontal run there must be a 1/4" of rise. 1" of clearance between framing and venting must be maintained at all times. 2" above the venting and 3" above an elbow.

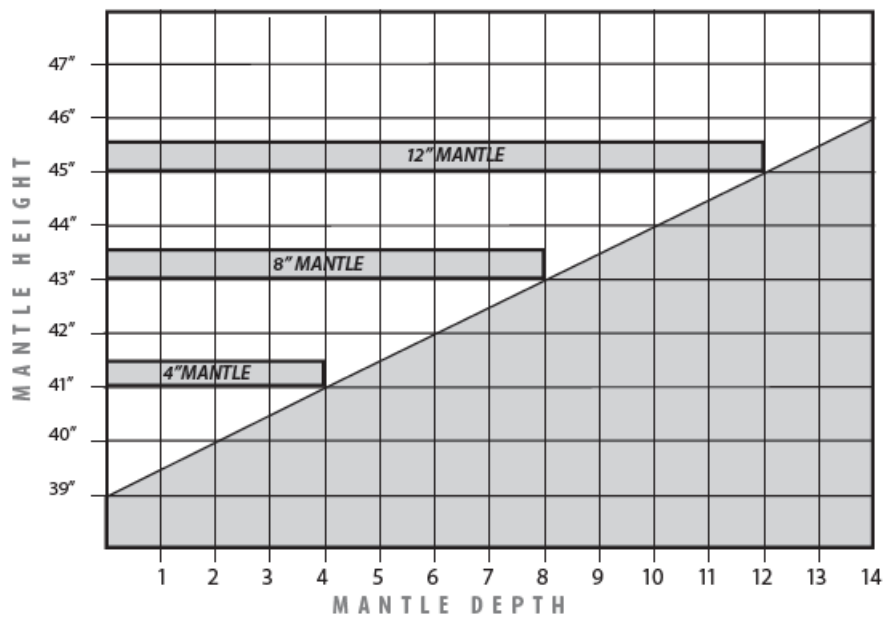


Fireplace Dimensions



Mantel Projections

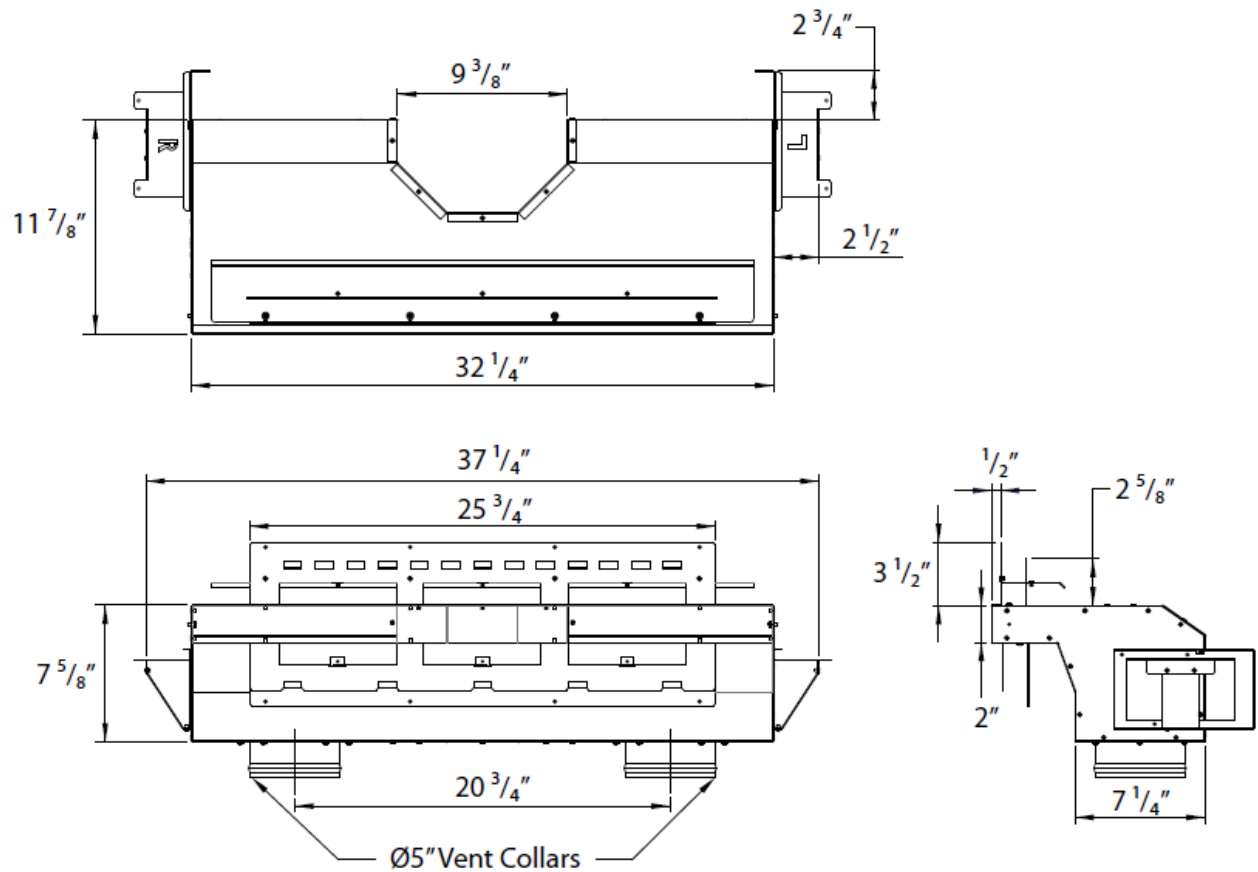
Mantel graph dimensions are measured from the bottom of the fireplace, if you wish to reference the mantel height from the tiling edge subtract 15 inches (381mm) from the mantel height depicted on the graph. If you plan to install a TV above your fireplace refer to the appropriate section of the owner's manual for available options. It is acceptable to install a combustible mantel over top of the non-combustible board. If you are activating the Cool Surface System you are eligible to subtract 12" (305mm) from the mantel height shown in this diagram. See page 6 for more details.



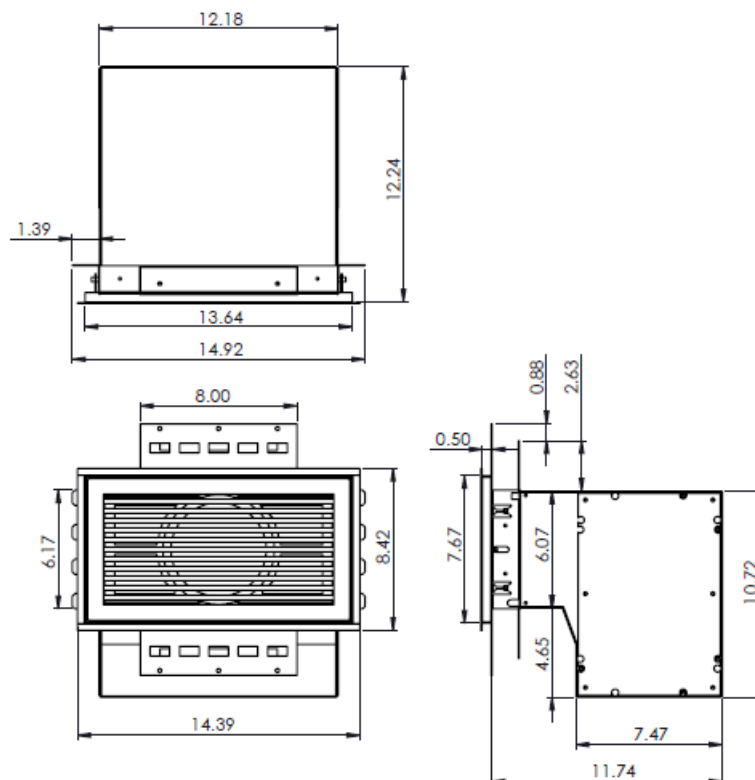
OPTIONAL STEP

Cool Surface System Part 1

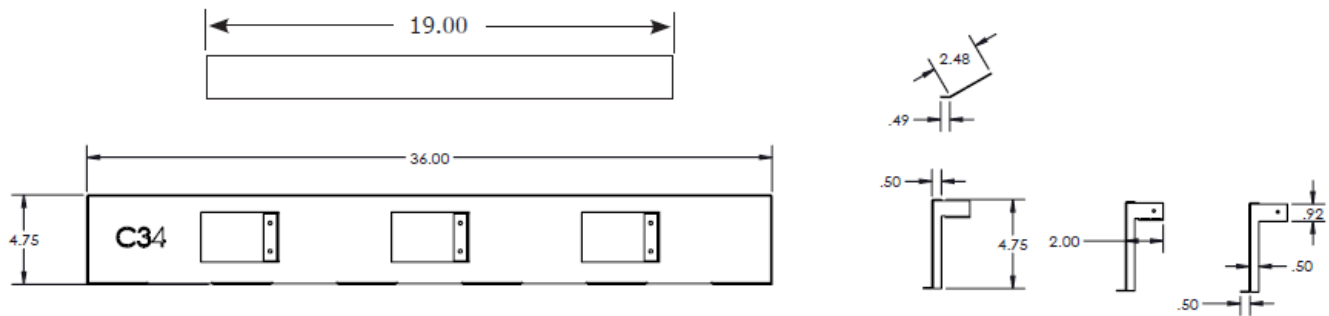
Dimensions



C34 CSS Front Vent - Overall Dimensions



CSS Side Vent - Dimensions

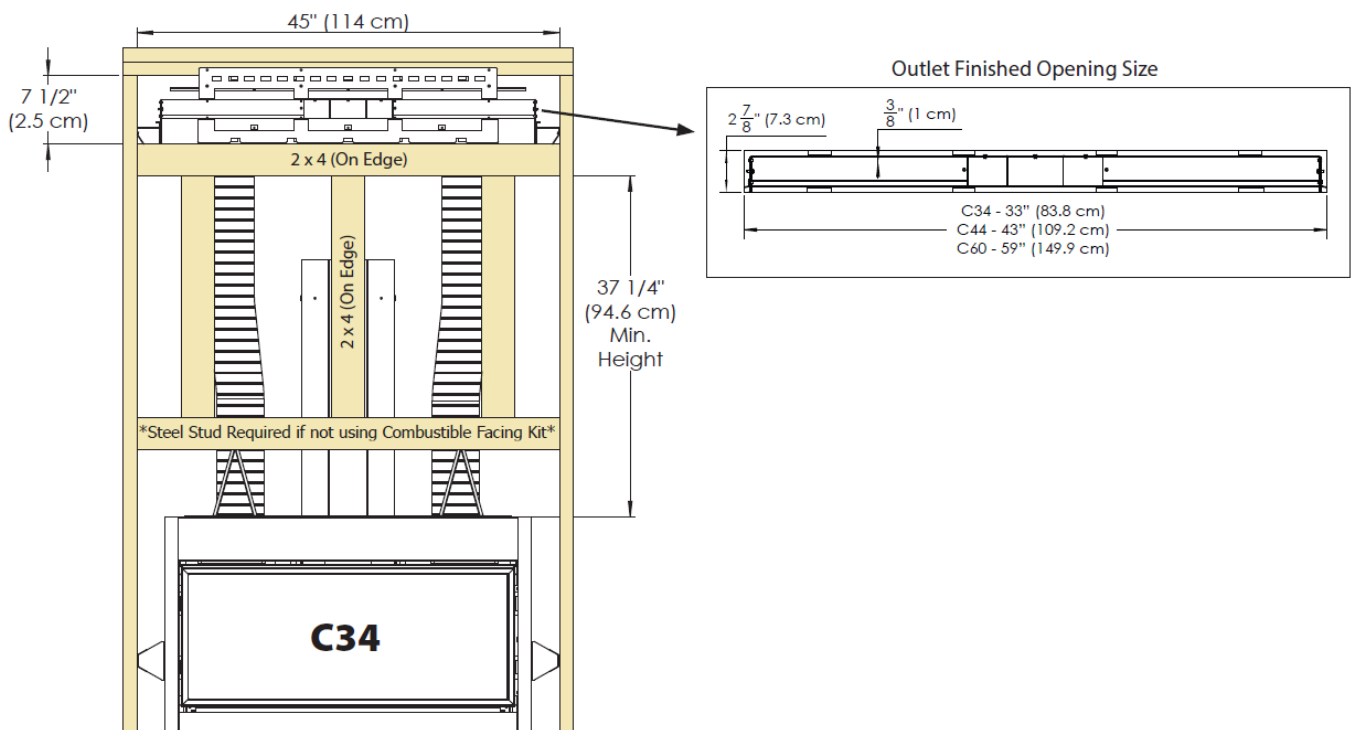


C34 CSS Combustible Facing Kit - Dimensions

Cool Surface System Part 2

Framing & Rough Opening – Front Vent

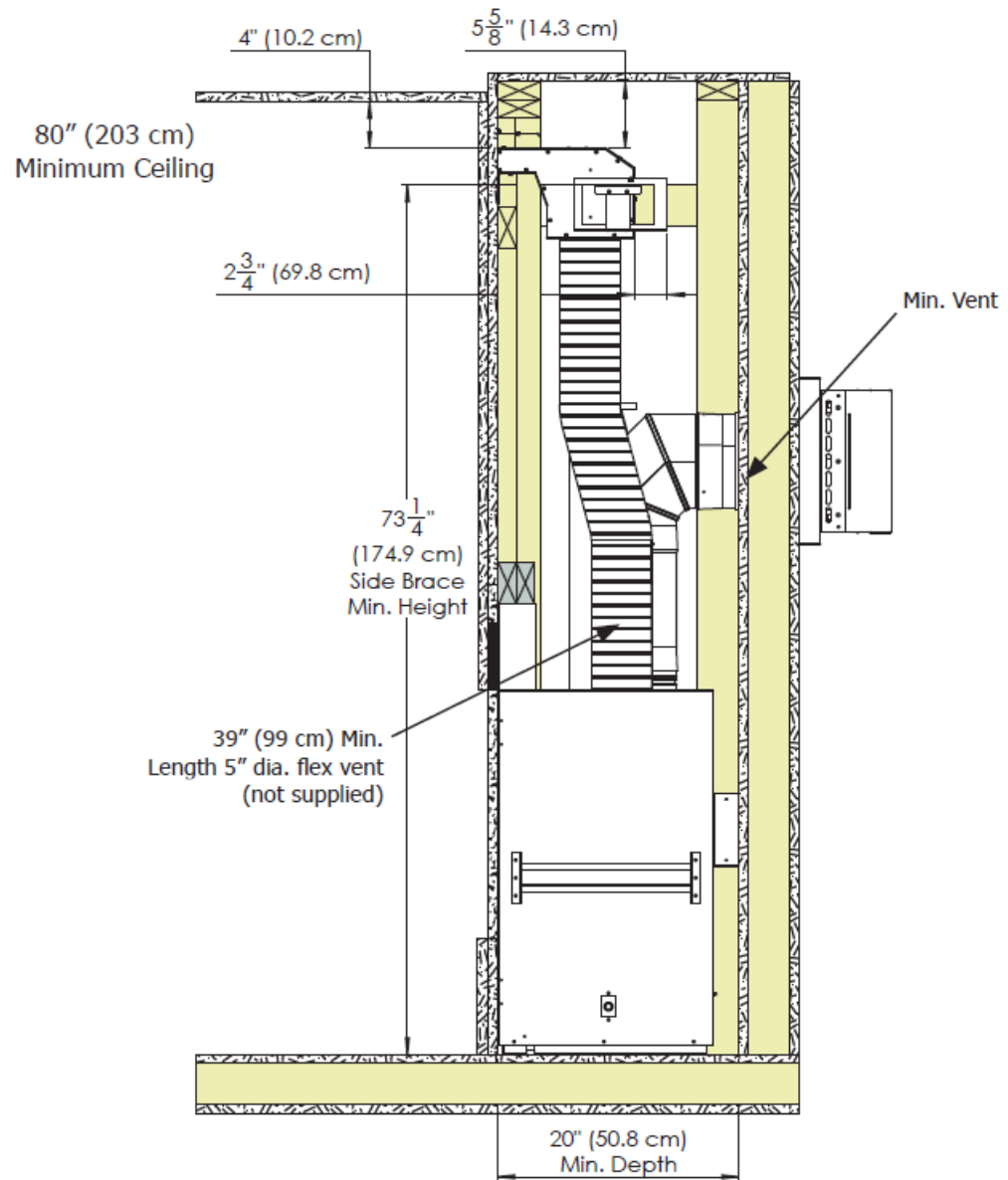
CSS Outlet Min. Top and Bottom standoff = $25/8$ " (6.7 cm) *All C Series*



Venting Clearances – Front Vent

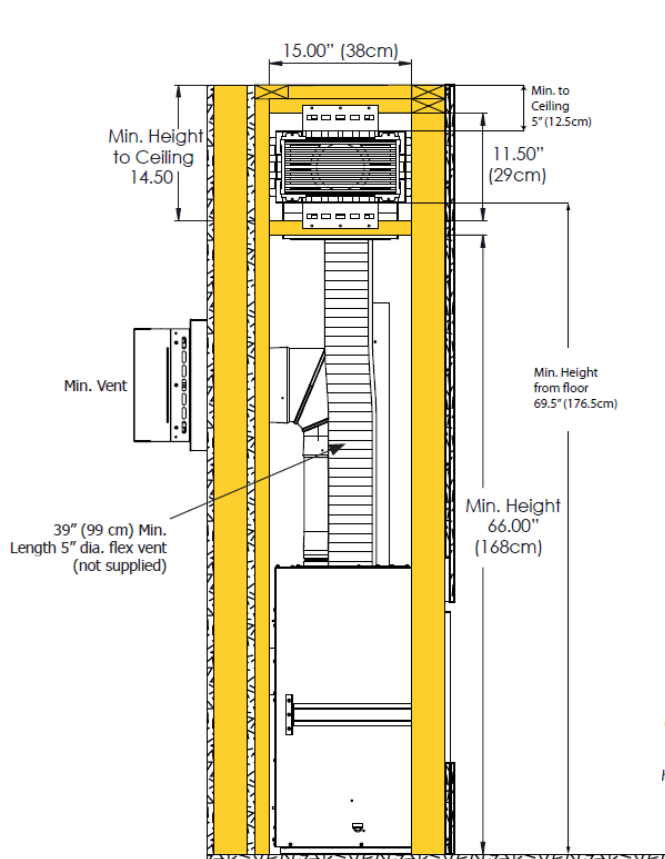
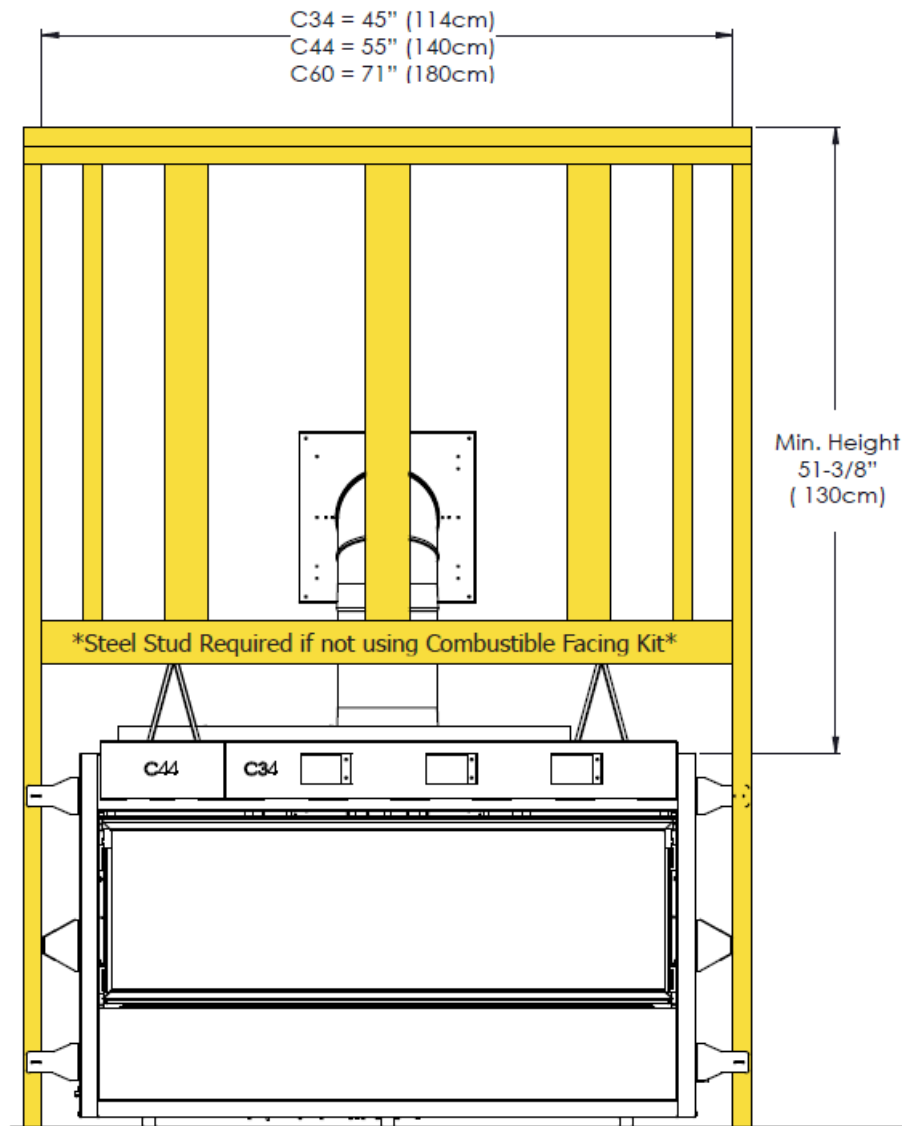
Shown here are the minimum framing and clearances for the CSS when the fireplace is installed with the minimum allowable vent length:

- Min. Ceiling Clearance from top of CSS outlet = 4" (10.2 cm)
- Min. Ceiling Clearance in wall from top of CSS Body = $55/8$ " (14.3 cm) CSS Body Min. Rear standoff = $23/4$ " (69.8 cm)

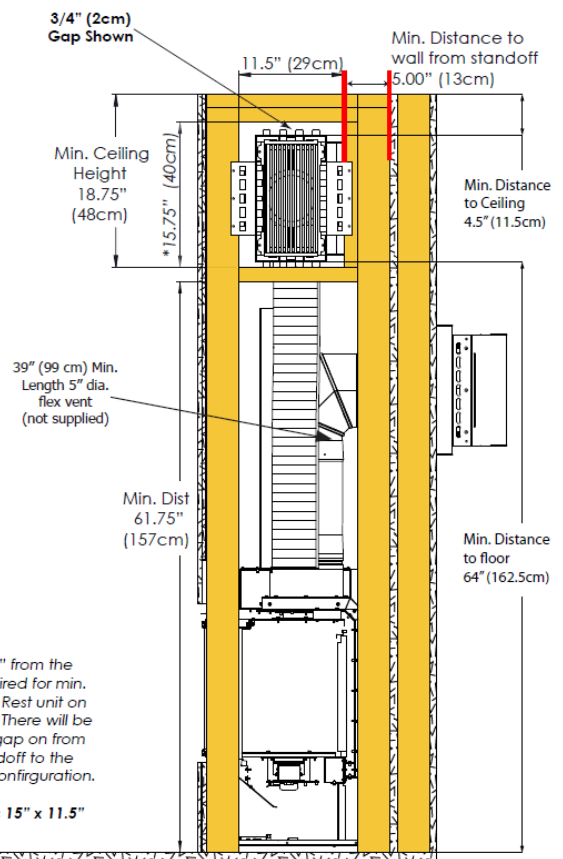


Cool Surface System Part 3

Framing & Clearances – CSS Side Vent



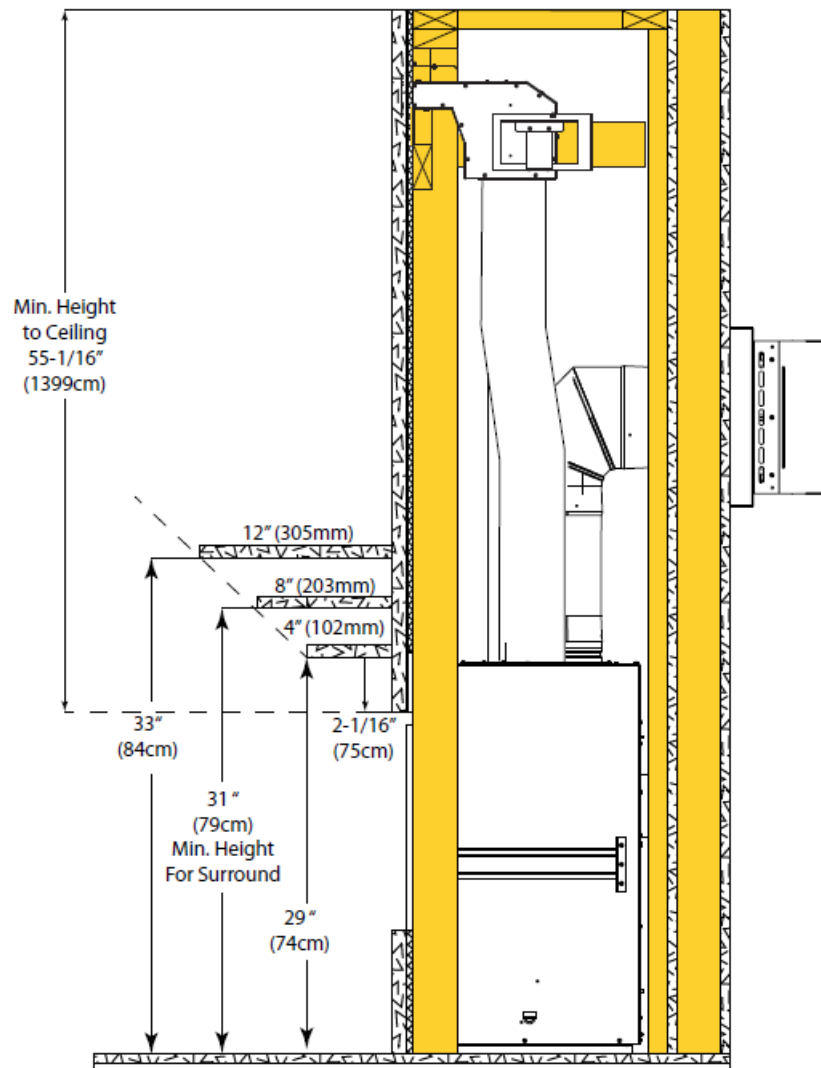
CSS Side Vent (Horizontal Install) - Min. Framing & Clearances



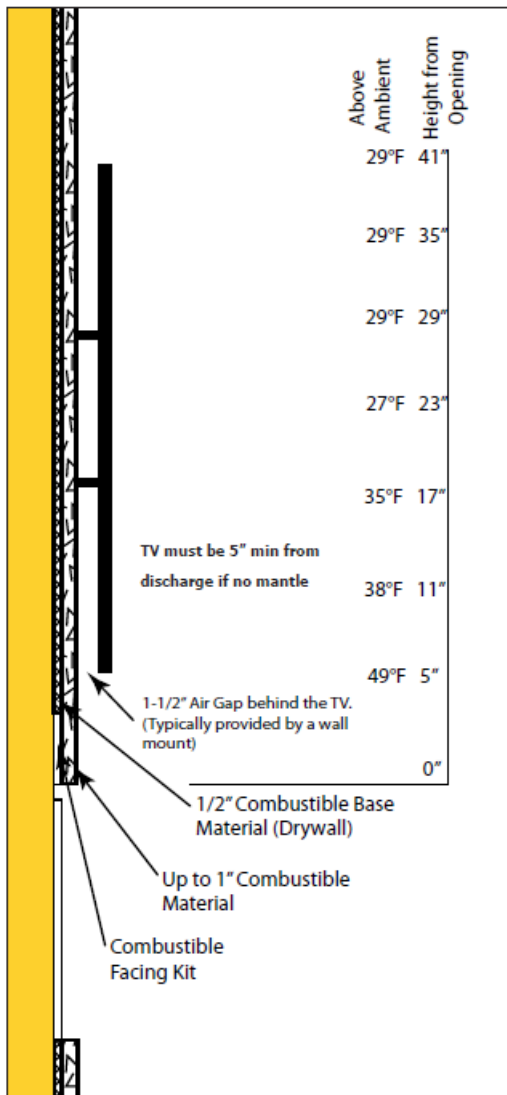
CSS Side Vent (Vertical Install) - Min. Framing & Clearances

Cool Surface System Part 4

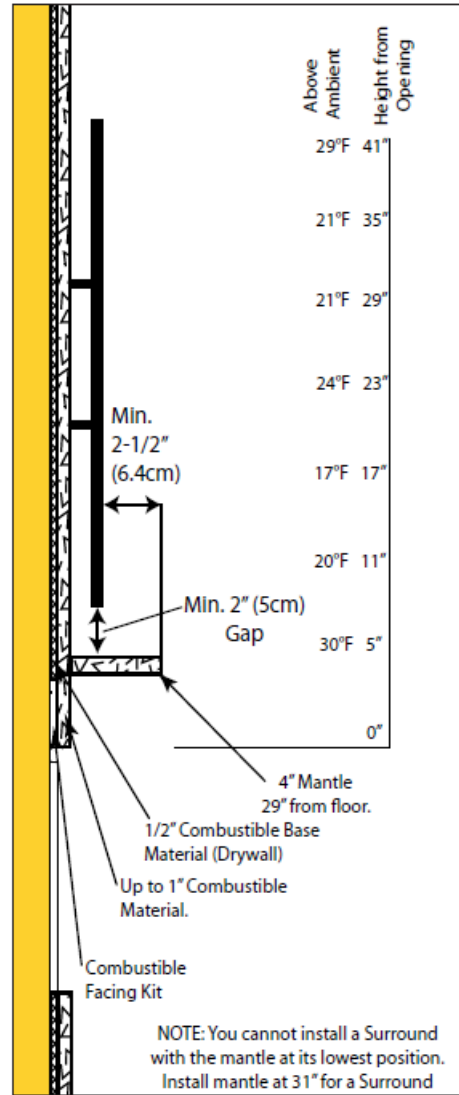
Framing & Revised Mantle Clearances – Front Vent



Framing & Revised Mantle Clearances – Side Vent



CSS - TV Clearances



CSS - TV Clearances with Mantle

Documents / Resources



[ENVIRO C34 Linear Gas Fireplace](#) [pdf] Installation Guide
C34 Linear Gas Fireplace, C34, Linear Gas Fireplace, Gas Fireplace, Fireplace

References

- [User Manual](#)