



**Hyperion Fencing
Gate and Trellis**

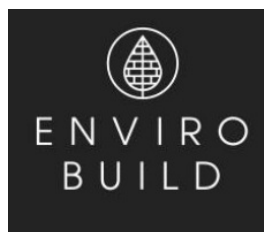


ENVIRO BUILD Hyperion Fencing Gate and Trellis Installation Guide

[Home](#) » [ENVIRO BUILD](#) » ENVIRO BUILD Hyperion Fencing Gate and Trellis Installation Guide 

Contents

- [1 ENVIRO BUILD Hyperion Fencing Gate and Trellis](#)
- [2 Instal Posts & Choose Gate Direction](#)
- [3 Trellis Installation](#)
- [4 Maintenance And Care](#)
- [5 Documents / Resources](#)
 - [5.1 References](#)
- [6 Related Posts](#)



ENVIRO BUILD Hyperion Fencing Gate and Trellis



While composites are highly durable, please follow these important guidelines to ensure their lasting beauty. when storing, moving, and working with Hyperion Fencing products.

Storage

- Material should always be covered until it is ready to be installed to maintain a clean surface. If stored outside use a non-translucent material.
- All products should be stored flat and level, supported above the ground at 500mm intervals
- Battens used to separate and support stored material should be spaced no more than 500mm apart, to ensure the boards don't bow.
- Stack units with banding and bottom supports aligned.
- Pallets of fencing slats should not be stacked more than 4 pallets or 3m in height

Handling

- Hyperion Fencing materials should be placed and not dumped when unloading
- When removing boards from a unit, lift the slats and set them down, do not slide slats against each other.
- Carry Hyperion Fencing slats on the edge for better support
- During construction, do not slide or drag any equipment across the slats
- The surface of the boards should be kept free of construction material and waste to prevent damage
- Each 1.8m fencing slat can weigh on average 4.5kg please ensure they are handled safely. we recommend that two people handle the boards during transportation

Recommended Tools To Install Hyperion Fencing

Standard woodworking tools can be used when working with Hyperion Fencing. If you are unsure of how to use any tool, please consult the tool's manufacturer's user manual.

- Circular Saw – we recommend a thin kerf 40-tooth alternate top bevel finish blade to achieve the cleanest cuts.

- Chisel
- Impact Driver
- Tape Measure
- Spirit Level
- Safety Glasses and relevant Personal

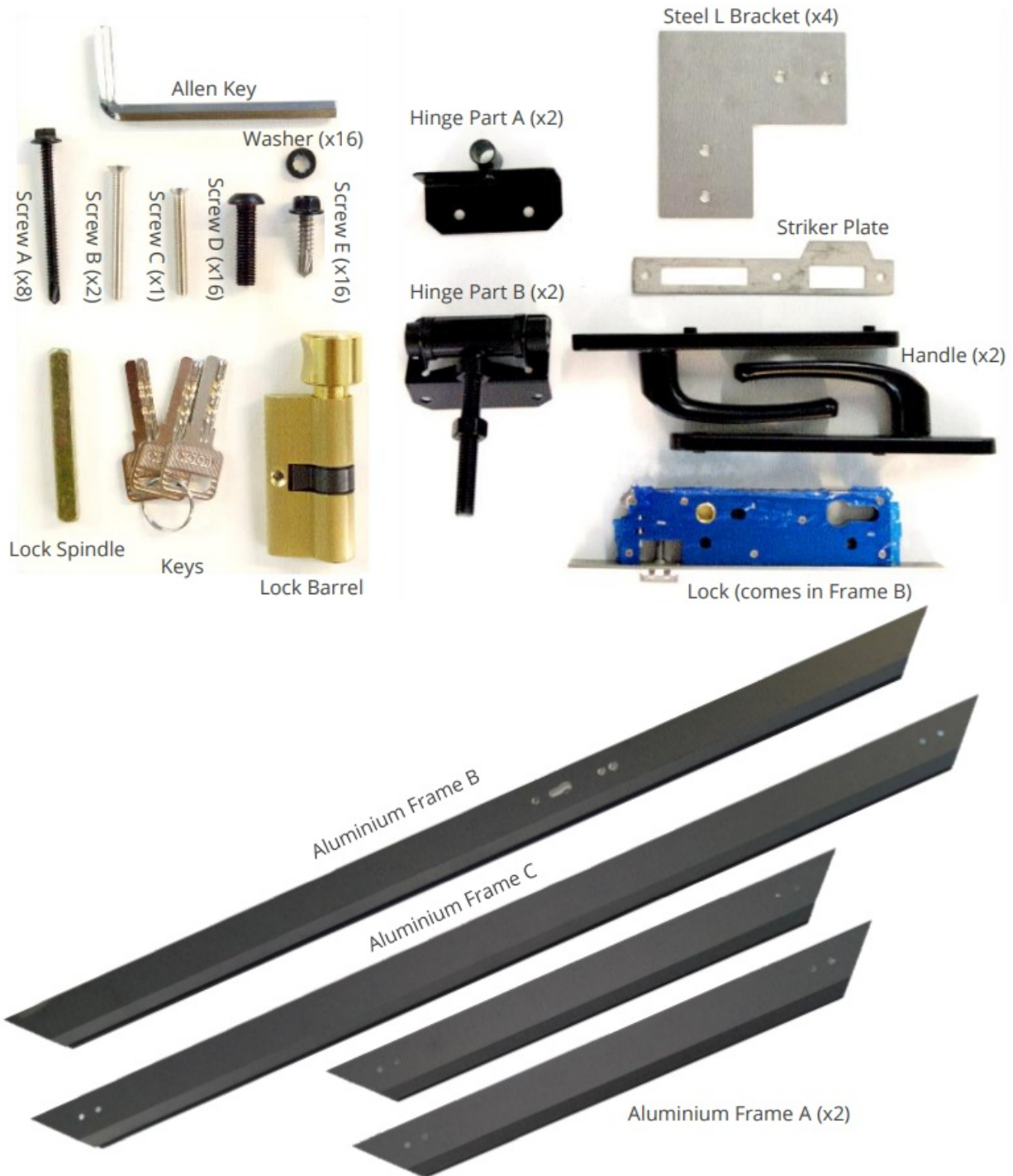
Protection Equipment (PPE)

- Chalk Line
- Phillips head screwdriver
- Sledgehammer and driving block if using fence post spikes
- Hex head key – 8mm & 10mm

Gate Kit – Frame, Lock & Hinges



Gate Kit – Component Labels



Instal Posts & Choose Gate Direction

Step 1: Unpack and Check Items

1. Unpack your gate kit and verify all items are present.

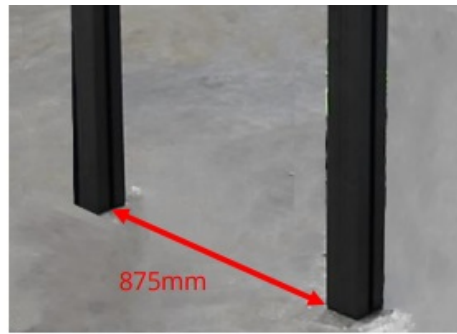


Fig.01



Fig.02

Step 2: Prepare and Install Posts

1. Fix your posts in place using a 1.6m ground anchor steel pole and ensure there is a gap of at least 875 mm between them (860mm gate, 5mm latch, min 10mm gap between hinge which can be extended) – Fig.01.

Step 3: Determine Gate Opening

Direction

1. Decide which way you want the gate to open and therefore when you will need to install your hinges and have your latch facing (curved latch edge facing the post it latches too).
2. If required you can re-position the latch direction in the lock case. Unscrew the lock from Aluminium Frame B with 2 face screws shown in Fig.02.



Fig.03

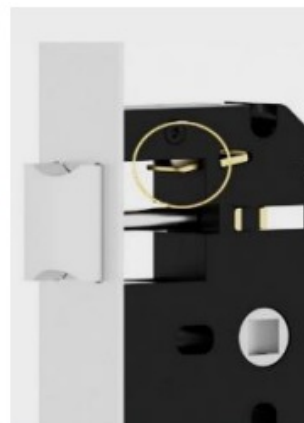


Fig.04

3. With the lock removed lift the lever shown in Fig.03 and push in the latch fully, you can now rotate 180 degrees and depress the latch ensuring the level falls back to a locked position – Fig.04.

Step 5: Attach L Brackets to the Aluminum Frame

1. Take the L brackets and attach one to each end of one of your Aluminium Frame A parts using Screw D – Fig.05.



Fig.05



Fig.06

Step 6: Attach Frame Sides (B&C) to Bottom Frame (A)

1. Slide the bottom end of Aluminium Frame B & C (B bottom is based on lock direction) pieces over just 1 of the Aluminium Frames A pieces with the affixed L brackets until the holes line up – Fig.05.
2. Fix the pieces in place with Screw D so you have just the bottom and 2 side pieces joined, do not fix the top frame piece at this point.

Step 7: Insert Fence Panels

1. Cut your fence panel pieces to size (720mm).
2. Slide the 10 pieces in from the top to fill your gate frame – Fig.07.



Fig.07



Fig.08

Step 8: Attach Remaining Frame A

1. Slide the second Aluminium Frame A with L brackets attached to the top of the gate until the holes line up with the brackets – Fig.08.
2. Fix in place using Screw D.

Step 9: Attach Hinges

1. On the opposite side frame from the lock, align the Hinge Part A with the first and last joins between the fence panels.
2. Attach each Hinge Part A with 4 x Screw E and Washers to the gate frame – Fig.09.



Fig.09

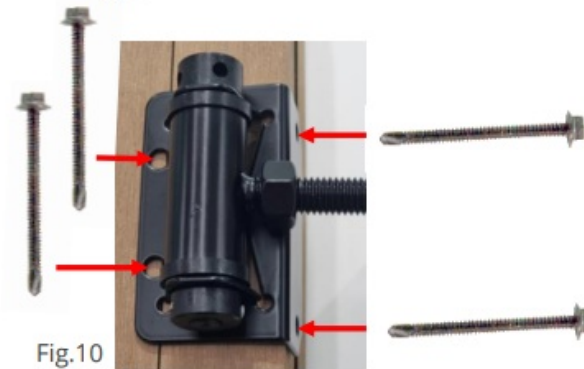


Fig.10



Fig.11

Step 10: Position the Gate for Hanging

1. Either measure or line up your gate (with Hinge Part B attached) to determine the desired height (and the gap at the top/bottom) and thus where Hinge Part B shall be fixed to the post.

Step 11: Install Hinge Part B

1. Once measured and marked, place the L plate of Hinge Part B onto the corner of the post and fix it in place with:
2. Top Hinge 4 x Screw A – Fig.10
3. Bottom Hinge 2 x Screw A in the shorter L face and 2 x Screw E in the wider L face (due to the ground anchor pole in the post) – Fig.11

Note: if fixing to a non-composite post, use the appropriate screw

4. If you have lined up the gate with hinges attached then you can simply screw them in place with the screws as per above – Fig-12.



Fig.12

5. Where required, slide the gate onto the Hinge Part A and reattach the nut to the end of the adjusting rod (top and bottom)
6. Adjust and tighten the nuts until you are satisfied with the gap between the gate and the post.

Step 12: Install the Lock and Handles

1. Insert the spindle and key barrel into the inside facing handle (has screw holes) ensuring the key slot is facing the opposite direction to the handle – Fig.13. Then slide them through the pre-drilled holes in the gate frame – Fig.14.
2. Once the key barrel is fully inserted into the lock mechanism, use Screw C and a hand screwdriver to fix this in place through the hole on the front of the lock face – Fig.14.



Fig.13



Fig.14



Fig.15

3. Attach the second handle aligning with the spindle on the opposite side and screw the handles in place with 2 x Screw B using a hand screwdriver (not electric) – Fig.15.

Step 13: Install the Striker Plate

1. Line up the striker plate on the post.
2. Fix the striker plate (use appropriate screws depending on head space available and post material – self-drilling for composite), then mark out the two areas of material to be removed for the locks – Fig.16.

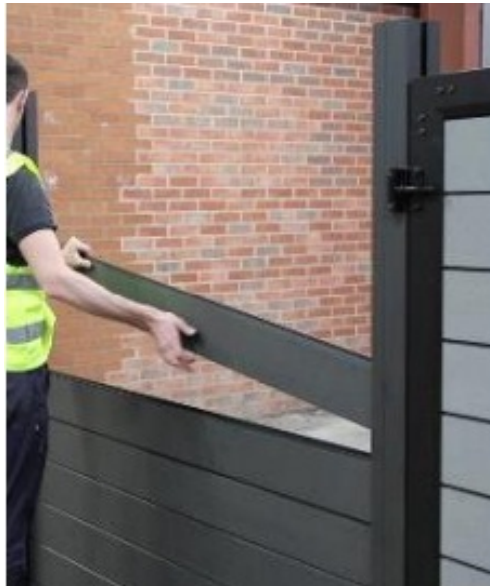


Fig.16

3. Remove the striker plate and create a void using a drill, multi-tool, or chisel (dep. on the material).
4. Reattach the striker plate.

Trellis Installation

1. Follow the steps in the fencing install guide for the fencing, until you begin to slide your fence panels into your posts.



2. Slide in 10 fence panels between your 2 posts.

3. On top of the 10th-panel slide in the panel cap (ensure you have inserted your fence clips into the end of the panel cap).
4. With the panel cap in place, you can now slide the trellis into position in the same post slots.



5. Once in place install your post caps (if you are using composite posts), following the fencing install guide.

Maintenance And Care

Hyperion products are low maintenance, however, with a little cleaning, you can help keep your outside space looking beautiful for longer. Please note that although Hyperion products are relatively color stable, there may be some initial lightening of the Pioneer range products as the product naturally weathers over the first 8-10 weeks.

Dirt & Grime

Maintaining a clean, dry surface is the best method for combating dirt, grime, and mildew build-up, where a periodic cleaning is all that may be required. Even though Hyperion products are formulated to inhibit mildew growth and staining, mildew stains can occur where moisture and dirt or pollen are present.

Scrapes & Scratches

Surface scratches and abrasions will fade after weathering. However, scrapes and scratch marks can be eliminated by using a wire brush or coarse 60-80 grit sandpaper (Pioneer range products only). Simply brush/sand in the direction of the grain on the product until the mark has gone. The treated area will weather back in approximately 8-10 weeks.

Painting & Staining

EnviroBuild does not guarantee or recommend anything applied to Hyperion products, however, it is still possible for Hyperion products to be painted or stained. Wait until the product has completed its weathering process and ensure you have a clean and dry surface before applying any paint or stain. Always apply products according to the manufacturer's application instructions.

Spot Stains

Many stains can be cleaned with soap or household de-greasing agents and warm water. Scrub and soak the affected area as soon as the stain occurs to ensure the best results, then rinse off with warm water. For more stubborn stains we recommend using a composite-specific cleaner for a more effective stain removal. Only with very set stains, you may want to use coarse sandpaper (60-80 grit) and sand lightly (Pioneer range products only), always in the direction of the grain of the product (be careful if sanding the flat wood-grained side of the Pioneer decking board as this can remove the enhanced wood grain effect).

Cleaned or sanded areas may lighten, which can require 8-10 weeks of exposure to the sun to match the remaining product, depending on location and specific application. Due to the wood content, composite products, like any wood-based product, may experience a naturally occurring process called Extractive Bleeding (known as

tea staining). This process can cause a temporary discoloration that will fade with time.

Cleaning

With the proper safety precautions Hyperion products can be washed with either soapy water and a soft-bristled brush or with a power washer (recommended max. 1500psi pressure). You should ensure to spray in the direction of the grain of the boards and use a fan tip nozzle (min. 6 inches from the surface) along with the proper cleaning product.

Q. What colors do your products come in?

A. Hyperion Fencing comes in a variety of colors. We have the natural browns: Oak and Walnut, then the modern greys: Granite, Stone

Q. Will the color fade over time?

A. Hyperion products will naturally lighten over the first 8-12 weeks and then stabilize after this period.

Q. Does the Fencing require treating?

A. Hyperion products are already colored so do not require painting at all. Also, due to the plastic content within Hyperion products, there is no need for any further treatment. This also makes it easy to clean.

Q. How do your products react when exposed to water?

A. Hyperion products are designed to take on very little water (c.1%). Our ranges have a much lower absorption rate than timber which heavily reduces the likelihood of wet rot over a longer period.

Q. Do you have recommended installers I can use?

A. EnviroBuild has an extensive network of recommended installers who we trust to bring your reality plans. We have chosen these installers for their high quality of work and professionalism, but as with any third party, we recommend that you follow your precautions before entering into a contract with them.

Q. Anything else?

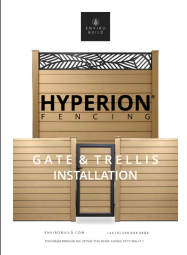
A. For any other technical, installation, or care questions, go to www.envirobuild.com, call our technical team at 0208 088 4888, or email us at info@envirobuild.com

Q. Can I see Hyperion Fencing samples?

A. Simply go to www.envirobuild.com to order your free samples.

EnviroBuild Materials Ltd. Unit 210, Bon Marche Centre, 241-251 Ferndale Road, London, SW9 8BJ.

Documents / Resources

	<p>ENVIRO BUILD Hyperion Fencing Gate and Trellis [pdf] Installation Guide Hyperion Fencing Gate and Trellis, Fencing Gate and Trellis, Gate and Trellis, Trellis</p>
---	---

References

- [🌱 Composite Decking, Cladding, Fencing & Flooring | EnviroBuild](#)
- [User Manual](#)

Manuals+. Privacy Policy

This website is an independent publication and is neither affiliated with nor endorsed by any of the trademark owners. The "Bluetooth®" word mark and logos are registered trademarks owned by Bluetooth SIG, Inc. The "Wi-Fi®" word mark and logos are registered trademarks owned by the Wi-Fi Alliance. Any use of these marks on this website does not imply any affiliation with or endorsement.