



ENViO IESS-BFM70H800-WM 8MP 4K UHD Bullet Full Color Network Camera Owner's Manual

[Home](#) » [ENViO](#) » ENViO IESS-BFM70H800-WM 8MP 4K UHD Bullet Full Color Network Camera Owner's Manual



Contents

- [1 ENViO IESS-BFM70H800-WM 8MP 4K UHD Bullet Full Color Network Camera](#)
- [2 Product Information](#)
- [3 Product Usage Instructions](#)
- [4 Technical Specification](#)
- [5 Warnings & Precautions](#)
- [6 Installation](#)
- [7 Framing adjustment](#)
- [8 Configuration](#)
- [9 Documents / Resources](#)
 - [9.1 References](#)
- [10 Related Posts](#)



ENViO IESS-BFM70H800-WM 8MP 4K UHD Bullet Full Color Network Camera



Product Information

The IESS-BFM70H800-WM is an 8MP 4K UHD Bullet Full Color Network Camera. It features an Embedded RTOS, dual-core 32bit DSP (NT98566) system, and has a minimum illumination of color 0.0001Lux@F1.2 and black/white 0.0001Lux@F1.2. The camera has an IR distance of 40m, with IR On/Off Control that can be set to Auto or Manual. It has 8 Warm White LED lights and a fixed lens with a focal length of 2.8mm and an angle of view. The camera has a resolution video output of 3824×2160, with a main stream of 8MP 3840*2160@15fps/5MP 2880*1616@25fps/4MP 2560*1440@25fps/2MP 1920*1080@25fps and a sub-stream of 800*448@25fps. The camera supports Human Detect/Face Detect/Video Analysis, 2D/3D Noise Reduction, and Auto/Manual White Balance. It is housed in a metal (aluminum) casing with IP65 protection.

Product Usage Instructions

1. **Warnings & Precautions:** Before using the product, please read the manual carefully to ensure the correct use of the product.
2. **Connections:** Connect the camera to the router and plug in the power cable (12V at least 1A). Alternatively, you can also power the camera with POE (IEEE.802.3af).
3. **Installation:** The camera comes with an integrated bracket for wall mounting. Mount the camera at the cable outlet, so the cables are not exposed. Fix the bracket to the wall or ceiling with the plugs provided.
4. **Framing adjustment:** Once fixed correctly to the wall/ceiling, point the camera in the desired direction and lock it by tightening the screws with the Allen key provided.
5. **Configuration:** Open Internet Explorer (version 10 or above is recommended) and set up ActiveX controls before accessing the camera. Enter the IP address of the camera in the address bar. Select Allow when Internet Explorer asks for permission to install ActiveX controls.
6. **Full manual:** For the full manual, visit www.enviosecurity.com.

Technical Specification

Camera

System	Embedded RTOS,dual-core 32bit DSP(NT98566)
Image Sensor	3824(H)×2160(V), 8MP 1/2.7" Black light illumination CMOS Sensor
Video compression	H264 / H265 / H265+ / H265X / H265AI
Minimum Illumination	color 0.0001Lux@F1.2 , black/white 0.0001Lux@F1.2
IR Distance	40m
IR On/Off Control	Auto / Manual
IR LEDs	8 Warm White Leds

Lens

Lens Type	Fixed Lens
Focal Length	2.8mm
Angle of View	86°
Focus Control	N/A

Video

- **Resolution** 3824×2160
- **Video Output**
 - **Main stream:** 8MP 3840*2160@15fps/5MP 2880*1616@25fps/4MP 2560*1440@25fps/2MP 1920*1080@25fps;
 - **sub-stream:** 800*448@25fps;3
- **Record** N/D

Network

Interface	1*RJ45 10/100M adaptive port;RTSP/FTP/DHCP/NTP/UPnP
ONVIF	2.4
Mobile Monitor	XMEYE/XMEYE PRO (iOS,Adroid)
Detect	Human Detect/Face Detect/Video Analysis
Noise Reduction	2D/3D
White Balance	Auto / Manual
Audio	Build-In Microphone

Electrical

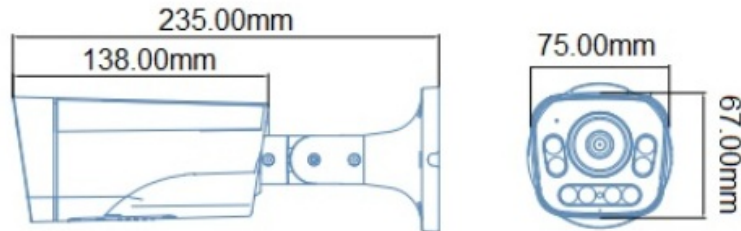
- **Power Supply** 12V DC ±30% / POE IEEE802.3af
- **Power Consumption** Max 3.6W (Leds on)

Environment

- **IP Protection** IP65

Construction

- **Housing** Metal (Alluminium)
- **Dimensions / Weight** 235mm×75mm×67mm/ 1200gr



Warnings & Precautions

Dear Customer, we thank you for choosing one of our products whose correct use guarantees solutions of the highest quality and reliability over time. This manual provides instructions for using the product.

Connections

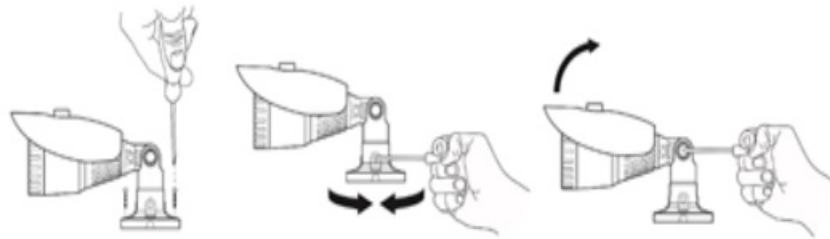
Connect the camera to the router and plug in the power cable (12V at least 1A). You can also power the cam with POE (IEEE.802.3af).

Installation

The bullet cameras are equipped with an integrated bracket for wall mounting, specially designed to allow the passage of cables inside it and protect them from tampering attempts. The camera is generally mounted at the cable outlet so as not to leave exposed cables. However, the fixing base also has a lateral cable outlet slot if the cables come from the side in the external duct. The bracket must be fixed to the wall or ceiling with the plugs provided.

Network High Definition

- 1/2.7" Black light illumination CMOS sensor
- 8MP 4K (3824*2160)
- 2.8mm Fixed lens
- Maximum Led distance 40m
- Human Detect/Face detect/Video Analysis
- Build-In Microphone
- 12VDC/POE IEEE802.3af
- Onvif 2.4
- H264/H265/H265+/H265X/H265AI
- 8 Warm White LEDs

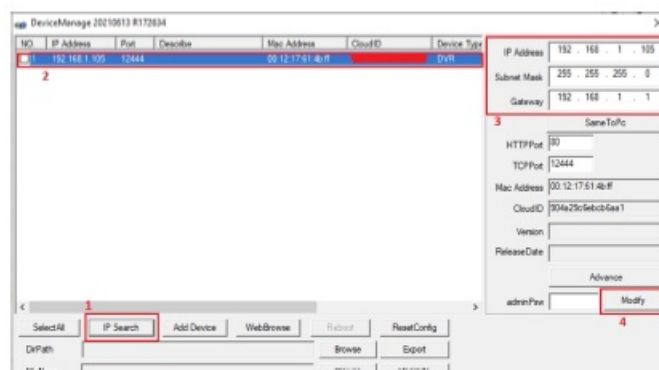


Framing adjustment

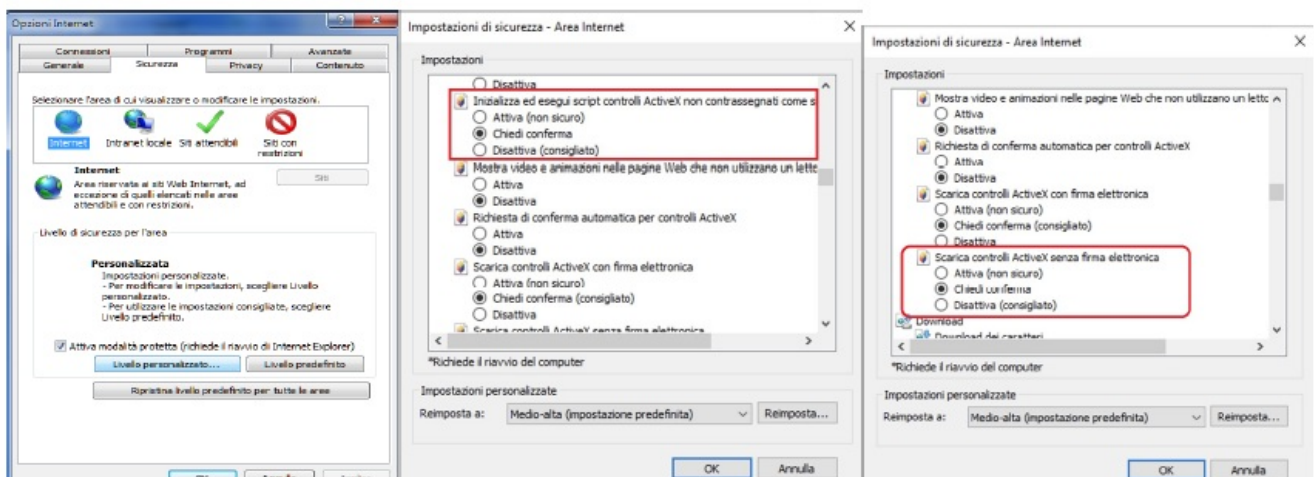
Once fixed correctly to the wall / ceiling, point it in the desired direction and lock it (may vary from model to model) by tightening the screws with the Allen key provided. Fixed lens cameras do not require focusing as they are factory set for most applications. To ensure optimum image quality, do not install the camera too close to strong light sources or in places subject to light reflections that could compromise the correct view of the camera.

Configuration

Connect the camera to the router and plug in the power cable (12V at least 1A). You can power the camera in POE (IEEE.802.3af), if the camera model is equipped with POE. Download the “Device Manager” software from the website www.enviosecurity.com and install it on the PC. Once the software is open, press the “IP Search” button (1). Select the IP address shown by the software (2), and modify the IP address of the camera (3), taking care to enter an IP address with the same subnet as your router, enter the relevant network mask and IP address of the gateway. Finally, press the “Modify” button (4) to save the settings. The software will show a “successful change” message.

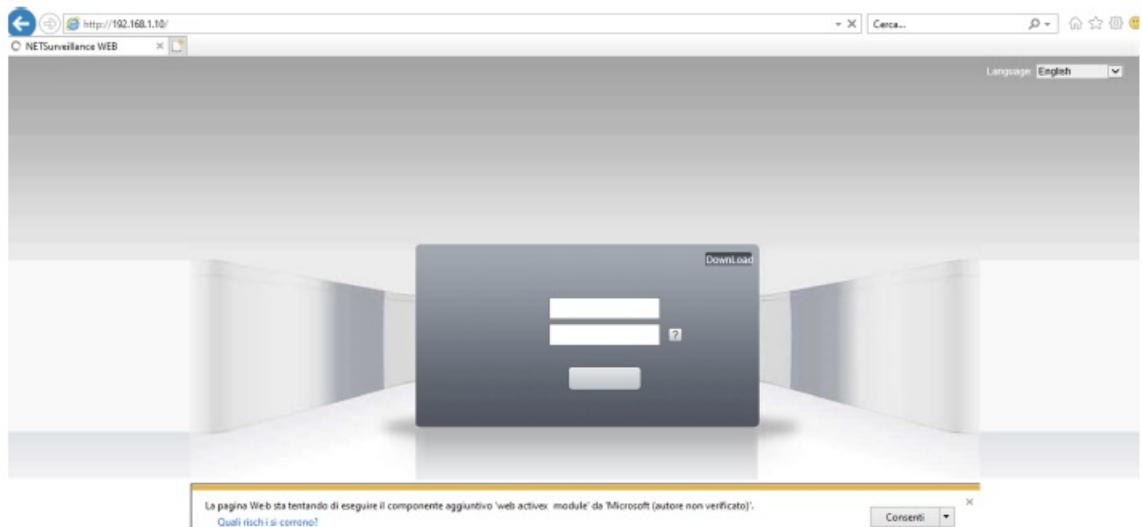


- Open Internet Explorer (we suggest using I.E. starting from version 10) Set up ActiveX controls before accessing the camera (Go to Internet option, select Security tab, select custom level and configure the ActiveX control settings as shown in the figure.



- In the Internet Explorer address bar, enter the IP address of the camera <http://192.168.1.10> Select “Allow”,

when Internet Explorer asks for permission to install ActiveX controls.

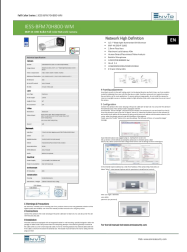


- **Enter your login credentials:**
 - **user:** admin
 - **password:** (no password)



For the full manual visit www.enviosecurity.com.

Documents / Resources

	<p>ENViO IESS-BFM70H800-WM 8MP 4K UHD Bullet Full Color Network Camera [pdf] Owner's Manual</p> <p>IESS-BFM70H800-WM 8MP 4K UHD Bullet Full Color Network Camera, IESS-BFM70H800-WM, 8MP 4K UHD Bullet Full Color Network Camera, Bullet Full Color Network Camera, Full Color Network Camera, Color Network Camera, Network Camera, Camera</p>
---	---

References

-  Envio Security