



# ENViO IESS-BFM70H500S-WM 5MP Bullet Full Color Network Camera Owner's Manual

[Home](#) » [ENViO](#) » ENViO IESS-BFM70H500S-WM 5MP Bullet Full Color Network Camera Owner's Manual 

## Contents

- [1 ENViO IESS-BFM70H500S-WM 5MP Bullet Full Color Network Camera](#)
- [2 Product Information](#)
- [3 Product Usage Instructions](#)
- [4 Technical Specification](#)
- [5 Network High Definition](#)
- [6 Documents / Resources](#)
  - [6.1 References](#)
- [7 Related Posts](#)



## ENViO IESS-BFM70H500S-WM 5MP Bullet Full Color Network Camera

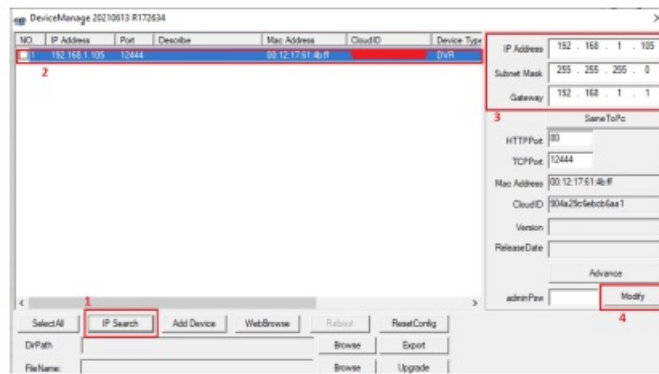


## Product Information

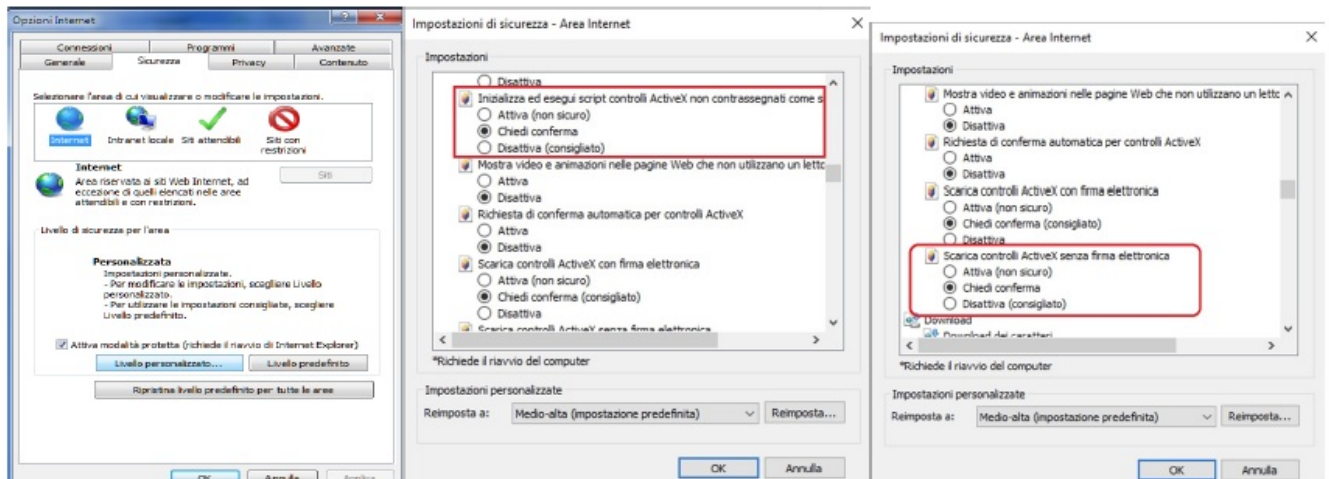
The IEES-BFM70H500S-WM is a 5MP bullet full color network camera designed for high-quality and reliable surveillance. It features a fixed lens with a focal length of 2.8mm and an angle of view. The camera has a minimum illumination of 0.01 Lux and comes with 8 warm white LEDs that provide an IR distance of up to 40m. It supports H264 / H265 / H265+ video compression and has a resolution of 2880×1616. The camera has an IP65 rating, making it suitable for outdoor use, and comes with a metal (aluminum) housing.

## Product Usage Instructions

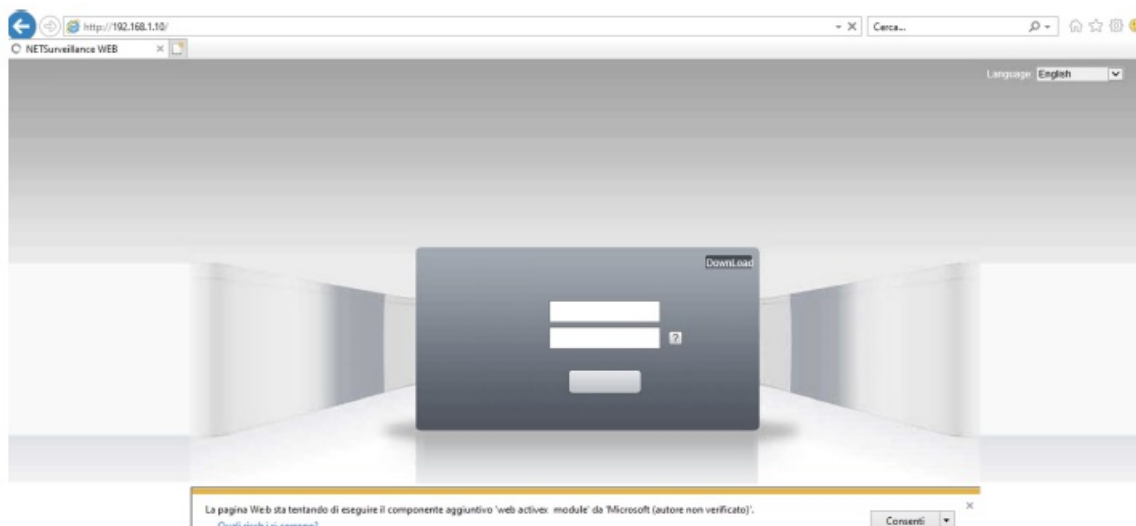
1. **Warnings & Precautions:** Before using the camera, make sure to read the user manual carefully and follow all the safety instructions provided. Dear Customer, we thank you for choosing one of our products whose correct use guarantees solutions of the highest quality and reliability over time. This manual provides instructions for using the product
2. **Connections:** Connect the camera to the router using an RJ45 cable and plug in the power cable (12V at least 1A). You can also power the camera with POE (IEEE.802.3af).
3. **Installation:** The bullet camera comes with an integrated bracket for wall mounting, which is specially designed to allow the passage of cables inside it and protect them from tampering attempts. To install the camera, fix the bracket to the wall or ceiling using the plugs provided. Once fixed correctly, point it in the desired direction and lock it by tightening the screws with the Allen key provided. The bullet cameras are equipped with an integrated bracket for wall mounting, specially designed to allow the passage of cables inside it and protect them from tampering attempts. The camera is generally mounted at the cable outlet so as not to leave exposed cables. However, the fixing base also has a lateral cable outlet slot if the cables come from the side in the external duct. The bracket must be fixed to the wall or ceiling with the plugs provided
4. **Framing adjustment:** Once fixed correctly to the wall/ceiling, point it in the desired direction and lock it by tightening the screws with the Allen key provided. Once fixed correctly to the wall / ceiling, point it in the desired direction and lock it (may vary from model to model) by tightening the screws with the Allen key provided. Fixed lens cameras do not require focusing as they are factory set for most applications. To ensure optimum image quality, do not install the camera too close to strong light sources or in places subject to light reflections that could compromise the correct view of the camera.
5. **Configuration:** Open Internet Explorer (version 10 or later) and set up ActiveX controls before accessing the camera. In the Internet Explorer address bar, enter the IP address of the camera (<http://192.168.1.10>). Select Allow when Internet Explorer asks for permission to install ActiveX controls. Connect the camera to the router and plug in the power cable (12V at least 1A). You can power the camera in POE (IEEE.802.3af), if the camera model is equipped with POE. Download the "Device Manager" software from the website [www.enviosecurity.com](http://www.enviosecurity.com) and install it on the PC. Once the software is open, press the "IP Search" button (1). Select the IP address shown by the software (2), and modify the IP address of the camera (3), taking care to enter an IP address with the same subnet as your router, enter the relevant network mask and IP address of the gateway. Finally, press the "Modify" button (4) to save the settings. The software will show a "successful change" message.



Open Internet Explorer (we suggest using I.E. starting from version 10) Set up ActiveX controls before accessing the camera (Go to Internet option, select Security tab, select custom level and configure the ActiveX control settings as shown in the figure)



In the Internet Explorer address bar, enter the IP address of the camera <http://192.168.1.10> Select "Allow", when Internet Explorer asks for permission to install ActiveX controls



**Enter your login credentials:**

1. **user:** admin
2. **password:** (no password)



6. **Video:** The camera supports human detect/face detect/video analysis and has 2D/3D noise reduction. To ensure optimum image quality, do not install the camera too close to strong light sources or in places subject to light reflections that could compromise the correct view of the camera.
7. **Audio:** The camera comes with a built-in microphone.
8. **Network:** The camera has a 10/100M adaptive port and supports RTSP/FTP/DHCP/NTP/UPnP. It also supports ONVIF 2.4 and can be monitored using XMEYE/XMEYE PRO (iOS, Android).

For more information, please refer to the full manual available at [www.enviosecurity.com](http://www.enviosecurity.com).

## Technical Specification

### Camera

- System Embedded RTOS,dual-core 32bit DSP(GK7605V100)
- Image Sensor 2880(H)×1616(V), 5MP 1/2.9" CMOS Sony Starvis Sensor
- Video compression H264 / H265 / H265+
- Minimum Illumination 0,01 Lux
- IR Distance 40m
- IR On/Off Control Auto / Manual
- IR LEDs 8 Warm White Leds

### Lens

- Lens Type Fixed Lens
- Focal Length 2.8mm
- Angle of View 86°
- Focus Control N/A

### Video

- Resolution 2880×1616
- **Video Output Main stream:** 2880\*1616@20fps/2560\*1440@25fps/2304\*1296@25fps 1920\*1080@25fps;
- **sub-stream:** 800\*448@25fps
- Record N/D

### Network

- Interface 1\*RJ45 10/100M adaptive port;RTSP/FTP/DHCP/NTP/UPnP
- ONVIF 2.4
- Mobile Monitor XMEYE/XMEYE PRO (iOS,Adroid)
- Detect Human Detect/Face Detect/Video Analysis
- Noise Reduction 2D/3D
- White Balance Auto / Manual
- Audio Build-In Microphone

## Electrical

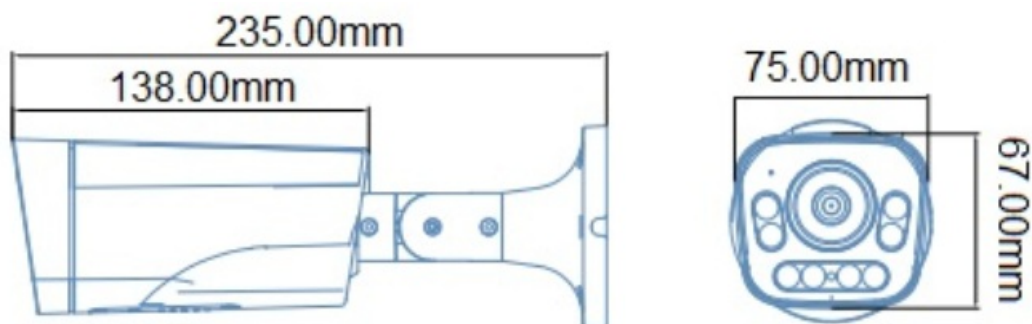
- Power Supply 12V DC  $\pm 30\%$  / POE IEEE802.3af
- Power Consumption Max 3.6W (Leds on)

## Environment

IP Protection IP65

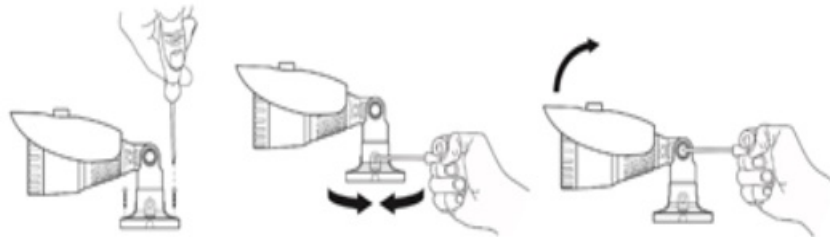
## Construction

- Housing Metal (Alluminium)
- Dimensions / Weight 235mm×75mm×67mm/ 1200gr




## Network High Definition

- 1/2.9" CMOS Sony Starvis Sensor
- 5 Megapixel (2880X1616)
- 2.8mm Fixed lens
- Maximum Led distance 40m
- Human Detect/Face Detect/Video Analysis
- Build-In Microphone
- 12VDC/POE IEEE802.3af
- Onvif 2.4
- H254/H265/H265+
- 8 Warm White LEDs



For the full manual visit [www.enviosecurity.com](http://www.enviosecurity.com) Web: [www.enviosecurity.com](http://www.enviosecurity.com)

## Documents / Resources

	<p><a href="#">ENVio IESS-BFM70H500S-WM 5MP Bullet Full Color Network Camera</a> [pdf] Owner's Manual</p> <p>IESS-BFM70H500S-WM 5MP Bullet Full Color Network Camera, IESS-BFM70H500S-WM, 5MP Bullet Full Color Network Camera, Bullet Full Color Network Camera, Color Network Camera, Network Camera, Camera</p>
---	--

## References

- [Envio Security](#)