



Envio Security IESS-BFM60H500S-WM 5MP Bullet Full Color Network Camera Owner's Manual

[Home](#) » [Envio Security](#) » Envio Security IESS-BFM60H500S-WM 5MP Bullet Full Color Network Camera Owner's Manual 

Contents

- [1 Envio Security IESS-BFM60H500S-WM 5MP Bullet Full Color Network Camera](#)
- [2 Product Information](#)
- [3 Product Usage Instructions](#)
- [4 Technical Specification](#)
- [5 Network](#)
- [6 Warnings & Precautions](#)
- [7 Connections](#)
- [8 Installation](#)
- [9 Network High Definition](#)
- [10 Framing adjustment](#)
- [11 Configuration](#)
- [12 Documents / Resources](#)
 - [12.1 References](#)
- [13 Related Posts](#)



Envio Security IESS-BFM60H500S-WM 5MP Bullet Full Color Network Camera



Product Information

The IESS-BFM60H500S-WM is a 5MP bullet full color network camera designed for high-quality and reliable surveillance. It features a fixed lens with a focal length of 2.8mm and an angle of view that provides clear and wide coverage. The camera also has IR distance of up to 30m with 4 warm white LEDs for enhanced visibility in low light conditions. With H264 / H265 / H265+ video compression technology and minimum illumination of color 0.01Lux@F1.2, black/white 0.001Lux@F1.2, this camera captures high-resolution videos (2880×1616) with reduced bandwidth and storage requirements. The camera is equipped with an RJ45 10/100M adaptive port for network connectivity and supports RTSP/FTP/DHCP/NTP/UPnP protocols. It also comes with ONVIF 2.4 compatibility and can be monitored through XMEYE/XMEYE PRO (iOS, Android) mobile applications. The IESS-BFM60H500S-WM has IP65 protection and a metal (aluminum) housing that makes it suitable for both indoor and outdoor installation.

Product Usage Instructions

1. **Warnings & Precautions:** Before using the camera, read the user manual carefully and follow all instructions to ensure safe and proper usage.
2. **Connections:** Connect the camera to the router using an RJ45 cable and plug in the power cable (12V at least 1A). Alternatively, you can use POE (IEEE.802.3af) for power supply.
3. **Installation:** The camera comes with an integrated bracket for wall mounting. Use the provided plugs to fix the bracket to the wall or ceiling and pass the cables through the cable outlet. Make sure to install the camera away from strong light sources or light reflections that could affect its view.
4. **Framing Adjustment:** After mounting the camera, point it in the desired direction and lock it by tightening the screws with the Allen key provided. Fixed lens cameras do not require focusing as they are factory set for most applications.
5. **Configuration:** Open Internet Explorer (version 10 or higher) and set up ActiveX controls before accessing the camera. In the Internet Explorer address bar, enter the IP address of the camera (e.g. <http://192.168.1.10>) and select Allow when prompted to install ActiveX controls.
6. **Monitoring:** You can monitor the camera using XMEYE/XMEYE PRO mobile applications (iOS, Android).

For more detailed instructions and information, refer to the user manual available at www.enviosecurity.com.

IESS-BFM60H500S-WM
5MP Bullet Full Color Network Camera



Technical Specification

Camera

System	Embedded RTOS,dual-core 32bit DSP(GK7605V100)
Image Sensor	2880(H)×1616(V), 5MP 1/2.9" CMOS Sony Starvis Sensor
Video compression	H264 / H265 / H265+
Minimum Illumination	color 0.01Lux@F1.2,black/white 0.001Lux@F1.2
IR Distance	30m
IR On/Off Control	Auto / Manual
IR LEDs	4 Warm White Leds

Lens

Lens Type	Fixed Lens
Focal Length	2.8mm
Angle of View	86°
Focus Control	N/A

Video

Resolution	2880x1616
Video Output	Main stream: 2880*1616@20fps/2560*1440@25fps/2304*1296@25fps 1920*1080@25fps; Sub stream: 1280*720@25fps/640*360@25fps
Record	N/D

Network

Interface	1*RJ45 10/100M adaptive port;RTSP/FTP/DHCP/NTP/UPnP
ONVIF	2.4
Mobile Monitor	XMEYE/XMEYE PRO (iOS,Adroid)
Detect	Human Detect
Noise Reduction	2D/3D
White Balance	Auto / Manual
Audio	Build-In Microphone

Electrical

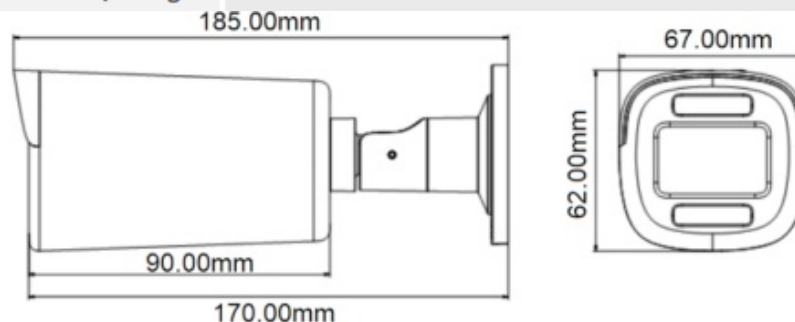
Power Supply	12V DC \pm 30% / POE IEEE802.3af
Power Consumption	Max 3.6W (Leds on)

Environment

IP Protection	IP65
----------------------	------

Construction

Housing	Metal (Alluminium)
Dimensions / Weight	185mm×67mm×62mm



Warnings & Precautions

Dear Customer, we thank you for choosing one of our products whose correct use guarantees solutions of the highest quality and reliability over time. This manual provides instructions for using the product.

Connections

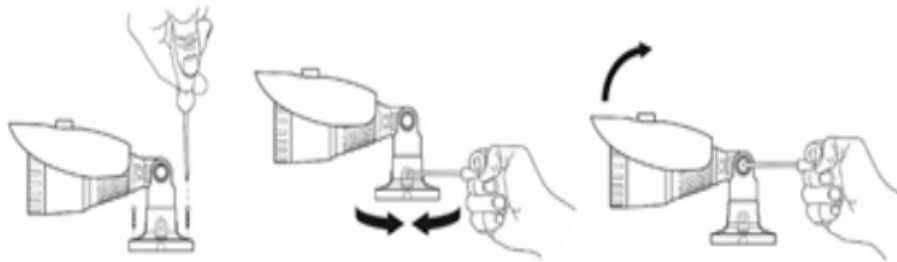
Connect the camera to the router and plug in the power cable (12V at least 1A). You can also power the cam with POE (IEEE.802.3af)

Installation

The bullet cameras are equipped with an integrated bracket for wall mounting, specially designed to allow the passage of cables inside it and protect them from tampering attempts. The camera is generally mounted at the cable outlet so as not to leave exposed cables. However, the fixing base also has a lateral cable outlet slot if the cables come from the side in the external duct. The bracket must be fixed to the wall or ceiling with the plugs provided

Network High Definition

- 1/2.9" CMOS Sony Starvis Sensor
- 5 Megapixel (2880X1616)
- 2.8mm Fixed lens
- Maximum Led distance 30m
- Human Detect/Face Detect/Video Analysis
- Build-In Microphone
- 12VDC/POE IEEE802.3af
- Onvif 2.4
- H254/H265/H265+
- 4 Warm White LEDs

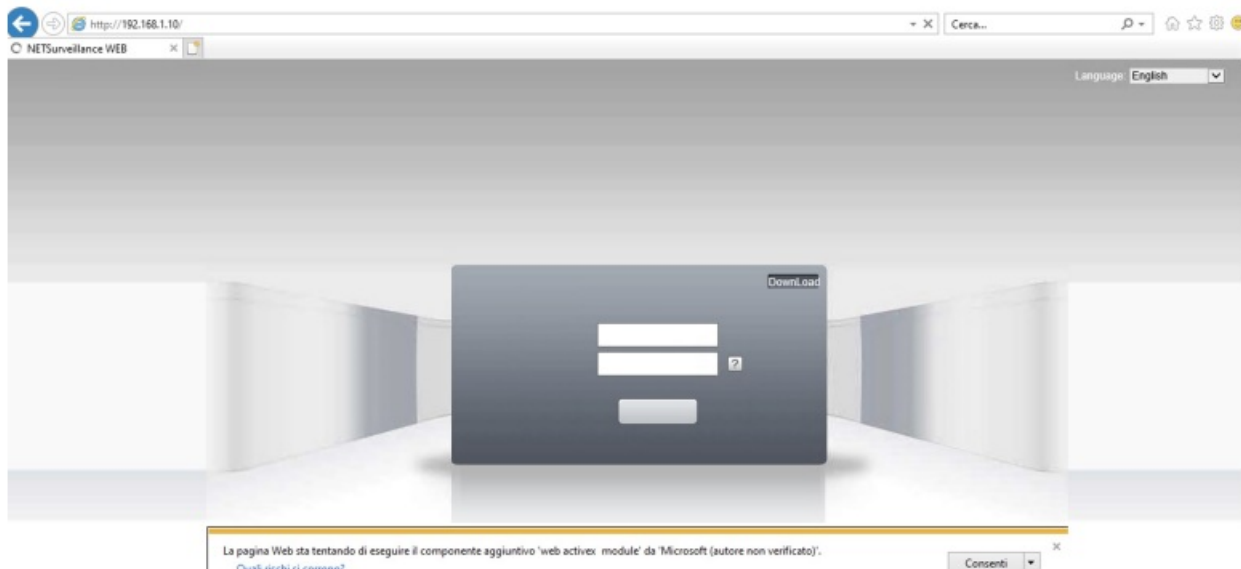


Framing adjustment

Once fixed correctly to the wall / ceiling, point it in the desired direction and lock it (may vary from model to model) by tightening the screws with the Allen key provided. Fixed lens cameras do not require focusing as they are factory set for most applications. To ensure optimum image quality, do not install the camera too close to strong light sources or in places subject to light reflections that could compromise the correct view of the camera.

Configuration

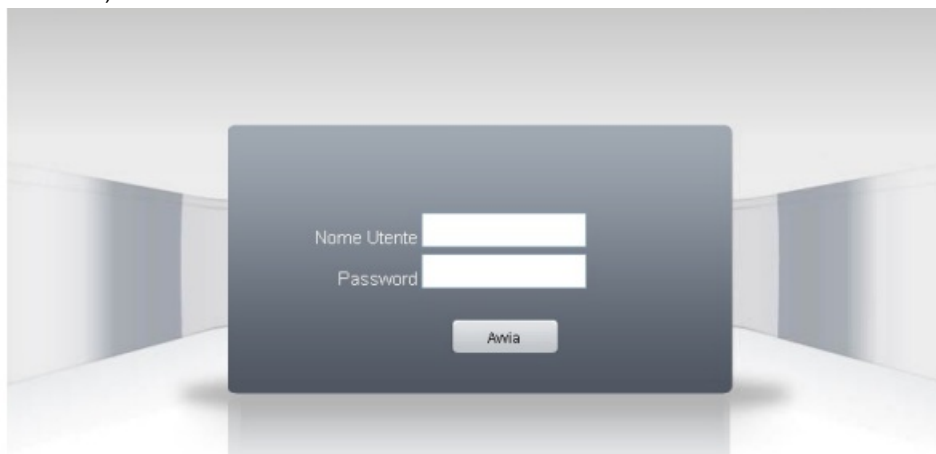
Connect the camera to the router and plug in the power cable (12V at least 1A). You can power the camera in POE (IEEE.802.3af), if the camera model is equipped with POE. Download the “Device Manager” software from the website www.enviosecurity.com and install it on the PC. Once the software is open, press the “IP Search” button (1). Select the IP address shown by the software (2), and modify the IP address of the camera (3), taking care to enter an IP address with the same subnet as your router, enter the relevant network mask and IP address of the gateway. Finally, press the “Modify” button (4) to save the settings. The software will show a “successful change” message.



Enter your login credentials:

user: admin

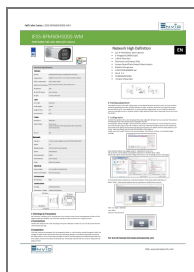
password: (no password)



For the full manual visit www.enviosecurity.com

Web: www.enviosecurity.com

Documents / Resources



[Envio Security IESS-BFM60H500S-WM 5MP Bullet Full Color Network Camera](#) [pdf] Owner's Manual

IESS-BFM60H500S-WM 5MP Bullet Full Color Network Camera IESS-BFM60H500S-WM 5MP, Bullet Full Color Network Camera, Color Network Camera, Network Camera, Camera

References

- [Envio Security](#)