

Envio Security IESS-BFM60H300-WM 3MP Bullet Full Color Network Camera User Manual

Contents

- 1 Full Color Series | IESS-BFM60H300-W
- 2 IESS-BFM60H300-WM
 - 2.1 3MP Bullet Full Color Network Camera
 - 2.2 Technical Specification
 - 2.2.1 Camera
 - 2.2.2 Lens
 - 2.2.3 Video
 - 2.2.4 Network
 - 2.2.5 Electrical
 - 2.2.6 Environment
 - 2.2.7 Construction
 - 2.3 Network High Definition
- 3 Documents / Resources
 - 3.1 References
- 4 Related Posts



Full Color Series | IESS-BFM60H300-W

IESS-BFM60H300-WM

3MP Bullet Full Color Network Camera



Technical Specification

Camera

System	Embedded RTOS, dual-core 32bit DSP(GK7205V200)
Image Sensor	2304(H)×1296(V), 3MP 1/2.8" Black light illumination CMOS Sensor
Video compression	H264 / H265 / H265+
Minimum Illumination	color 0.0001Lux@F1.2, black/white 0.0001Lux@F1.2
IR Distance	30m
IR On/Off Control	Auto / Manual
LEDs	4 Warm White Leds

Lens

Lens Type	Fixed Lens
Focal Length	2.8mm
Angle of View	86°
Focus Control	N/A

Video

Resolution	2304×1296
Video Output	Main stream: 3MP 2304*1296@20fps/2MP 1920*1080@25fps; sub-stream: 800*448@25fps;
Record	N/D

Network

Interface	1*RJ45 10/100M adaptive port; RTSP/FTP/DHCP/NTP/UPnP
ONVIF	2.4
Mobile Monitor	XMEYE/XMEYE PRO (iOS,Adroid)
Detect	Human Detect/Face Detect/Video Analysis
Noise Reduction	2D/3D
White Balance	Auto / Manual
Audio	N/D

Electrical

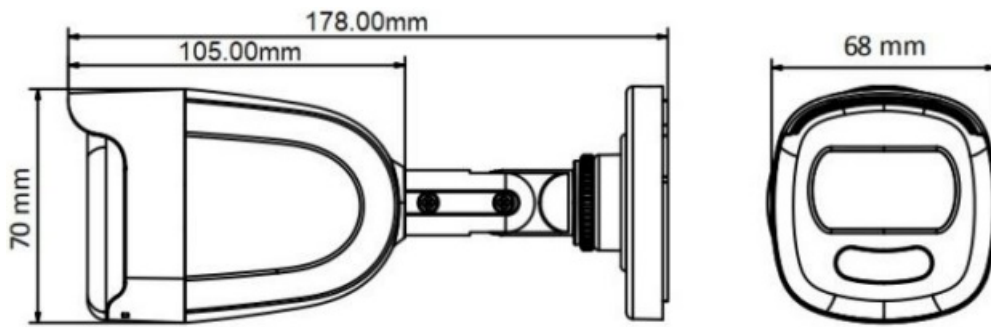
Power Supply	12V DC \pm 30% / POE IEEE802.3af
Power Consumption	Max 3.6W (Leds on)

Environment

IP Protection	IP65
----------------------	------

Construction

Housing	Plastic
Dimensions / Weight	178mm×70mmx68mm



1 Warnings & Precautions

Dear Customer, we thank you for choosing one of our products whose correct use guarantees solutions of the highest quality and reliability over time. This manual provides instructions for using the product.

2 Connections

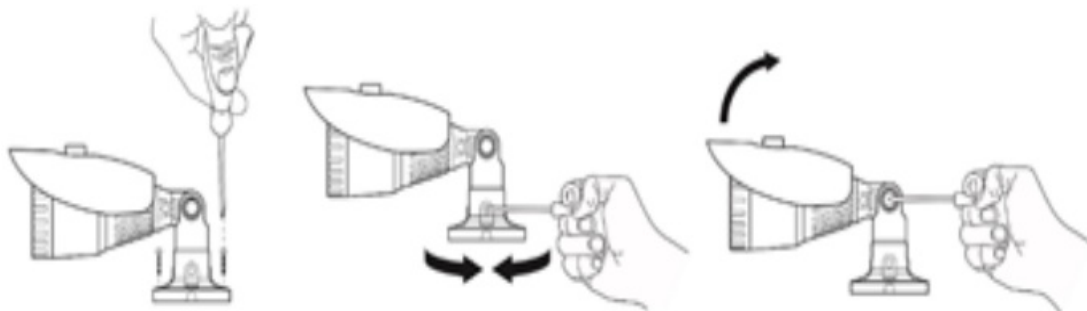
Connect the camera to the router and plug in the power cable (12V at least 1A). You can also power the cam with POE (IEEE.802.3af)

3 Installation

The bullet cameras are equipped with an integrated bracket for wall mounting, specially designed to allow the passage of cables inside it and protect them from tampering attempts. The camera is generally mounted at the cable outlet so as not to leave exposed cables. However, the fixing base also has a lateral cable outlet slot if the cables come from the side in the external duct. The bracket must be fixed to the wall or ceiling with the plugs provided

Network High Definition

- 1/2.8" Black light illumination CMOS sensor
- 3MP (2304*1296)
- 2.8mm Fixed lens
- Maximum Led distance 30m
- Human Detect/Face detect/Video Analysis
- 12VDC/POE IEEE802.3af
- Onvif 2.4
- H264/H265/H265+
- 4 Warm White LEDs



4 Framing adjustment

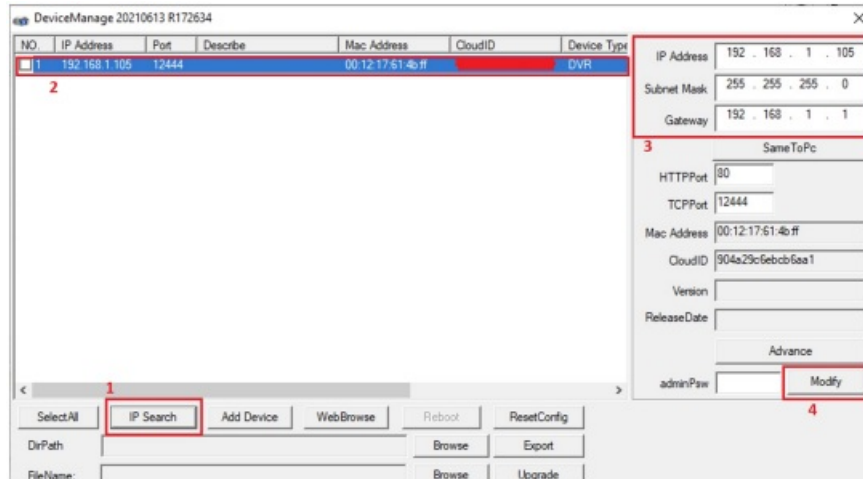
Once fixed correctly to the wall / ceiling, point it in the desired direction and lock it (may vary from model to model) by tightening the screws with the Allen key provided. Fixed lens cameras do not require focusing as they are factory set for most applications. To ensure optimum image quality, do not install the camera too close to strong light sources or in places subject to light reflections that could compromise the correct view of the camera.

5 Configuration

Connect the camera to the router and plug in the power cable (12V at least 1A). You can power the camera in POE (IEEE.802.3af), if the camera model is equipped with POE.

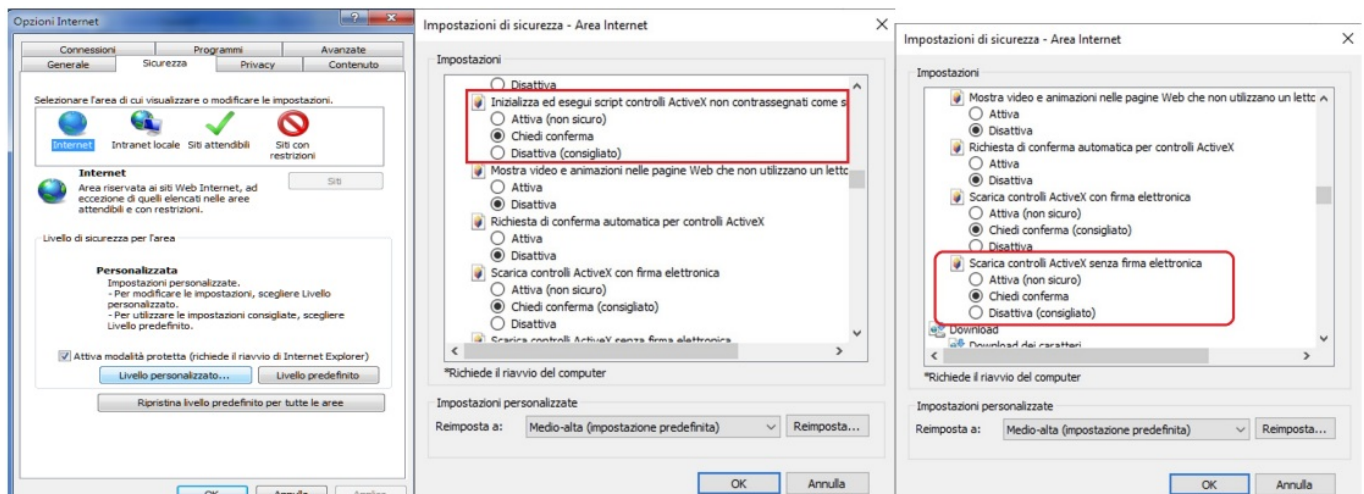
Download the “Device Manager” software from the website www.enviosecurity.com and install it on the PC. Once the software is open, press the “IP Search” button (1). Select the IP address shown by the software (2), and modify the IP address of the camera (3), taking care to enter an IP address with the same subnet as your router, enter the relevant network mask and IP address of the gateway.

Finally, press the “Modify” button (4) to save the settings. The software will show a “successful change” message.

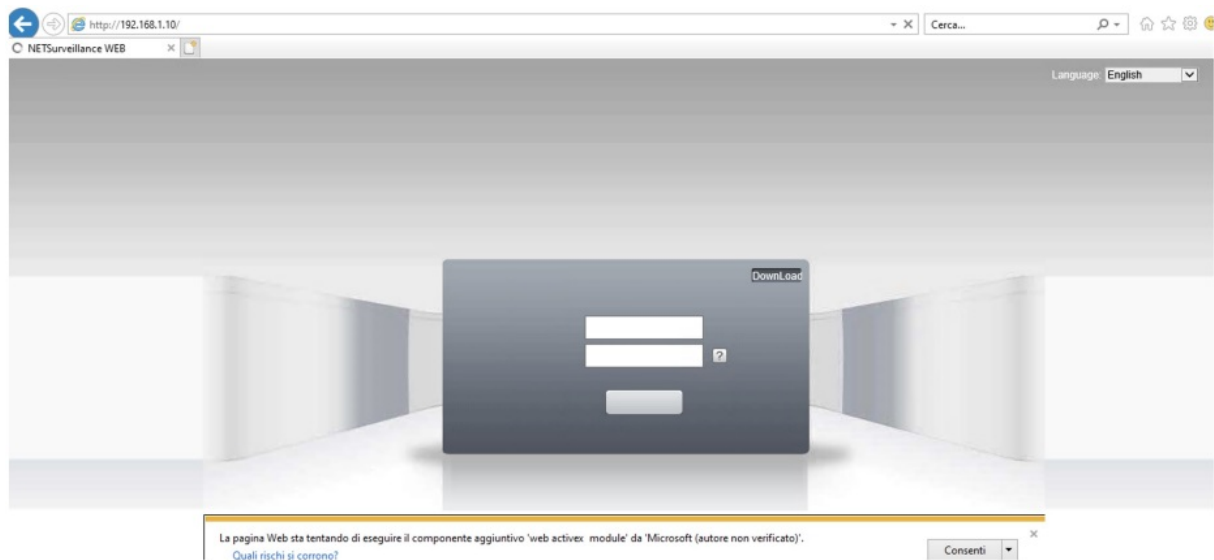


Open Internet Explorer (we suggest using I.E. starting from version 10)

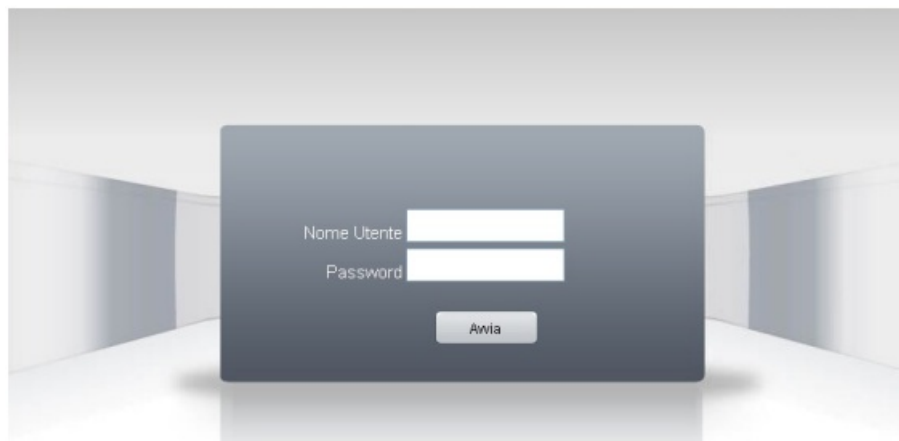
Set up ActiveX controls before accessing the camera (Go to Internet option, select Security tab, select custom level and configure the ActiveX control settings as shown in the figure).



In the Internet Explorer address bar, enter the IP address of the camera <http://192.168.1.10> Select “Allow”, when Internet Explorer asks for permission to install ActiveX controls



Enter your login credentials:
 user: admin
 password: (no password)

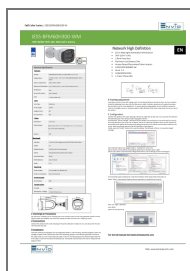


For the full manual visit www.enviosecurity.com



Web: www.enviosecurity.com

Documents / Resources



[Envio Security IESS-BFM60H300-WM 3MP Bullet Full Color Network Camera](#) [pdf] User Manual

IESS-BFM60H300-WM 3MP Bullet Full Color Network Camera, IESS-BFM60H300-WM, 3MP Bullet Full Color Network Camera, Bullet Full Color Network Camera, Full Color Network Camera, Network Camera, Camera

References

- [Envio Security](#)

Manuals+.