



Entel GW425 E-PoC Gateway 3.0 Connecting E-PoC to Existing Radio Systems User Guide

[Home](#) » [Entel](#) » Entel GW425 E-PoC Gateway 3.0 Connecting E-PoC to Existing Radio Systems User Guide 

Contents

- [1 Entel GW425 E-PoC Gateway 3.0 Connecting E-PoC to Existing Radio Systems](#)
- [2 CONTROLS, INDICATORS & CONNECTORS](#)
- [3 INSTALLATION](#)
- [4 PROGRAMMING THE GATEWAY](#)
- [5 Documents / Resources](#)
- [6 Related Posts](#)



Entel GW425 E-PoC Gateway 3.0 Connecting E-PoC to Existing Radio Systems



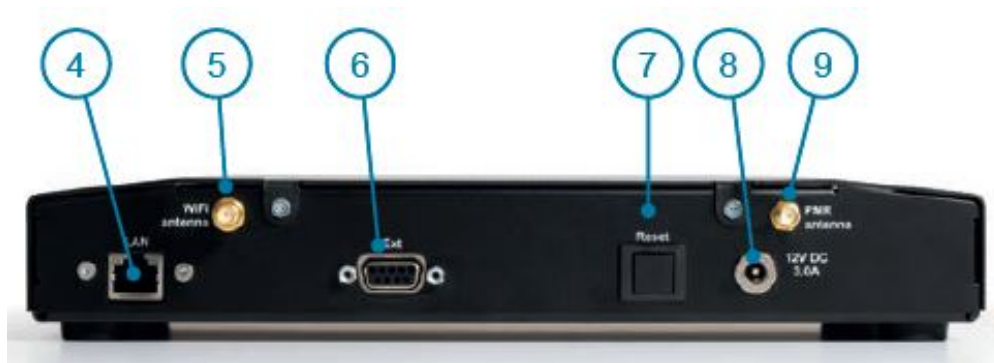
IMPORTANT

By using this product you agree to the terms and conditions of Entel's E-PoC Service License which can be viewed here: www.entel.co.uk/EPoC_LICENSE

CONTROLS, INDICATORS & CONNECTORS



1. Power LED
2. LCD Display
3. Mode / Settings button
4. LAN cable socket
5. Wireless LAN (Wi-Fi) antenna socket
6. External interface socket*
7. Reset switch
8. Power socket
9. PMR antenna socket**



INSTALLATION

Ensure the power is disconnected

- WIRED LAN
 - 1 Plug the LAN cable into the LAN socket 4
- WIRELESS LAN (WiFi)
 - 1 Connect the included WiFi antenna to the WiFi antenna socket 5 (ensuring the antenna is vertical)
- PMR ANTENNA (GW425 & GW485 models only)
 - 1 Connect the included PMR antenna and, if required, 90-deg adapter to the PMR antenna socket 9 (ensuring the antenna is vertical)
- Power the Gateway on
 - 1 The red Power LED 1 will illuminate and the LCD 2 will display the following screens (XX will be the Gateway model type):



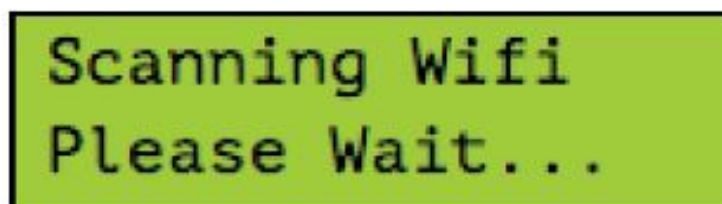
Once the Gateway has started it will either show the Ethernet connection address (if an Ethernet wire is connected), else will display the 'No Network' screen:



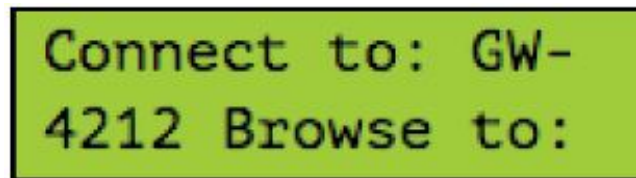
If connected by Ethernet please skip to 2.5.5.

Connecting to a WiFi network

To enter the WiFi configuration mode press and hold the mode button for at least 5s. Continue to hold and the display will indicate that it is scanning for available networks, the button can then be released.



2.5.2 You now need to connect to the Gateway's web configuration page. The top line displays the Gateway's SSID the URL is displayed on the bottom line (bot fields will scroll).



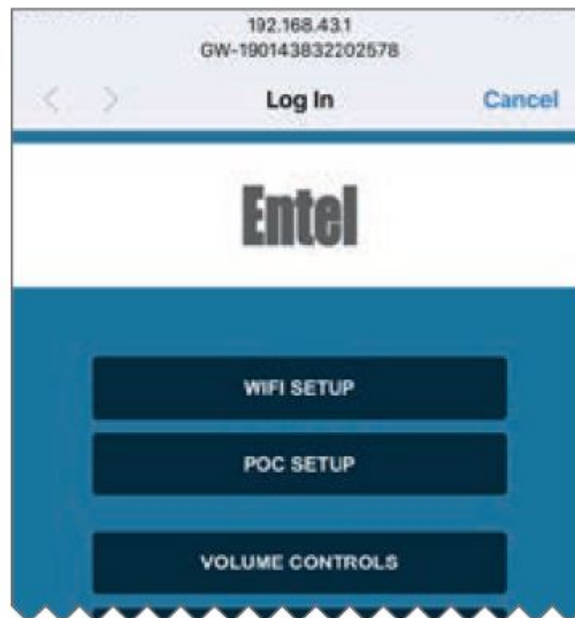
Use a smartphone or laptop to connect to the shown SSID and then, if the login page is not automatically shown, browse to the indicated URL, <http://192.168.43.1> (text will scroll on the display).

If you want to exit WiFi configuration mode without connecting to a network, press and hold the mode button for 5s.

2.5.3 WiFi Hotspot connection main screen From the main Screen select 'WIFI SETUP'

2.5.4 WiFi setup screen Select a network from the SSID pull down. Select its security type and enter the network password.

To save changes tap 'Apply' then 'Done, from the next Screen.



Connecting to the gateway via its connected network Please connect to the IP address shown appending with :1234, i.e. in this example it would be <http://192.168.0.66:1234>

Enter the default password 'gateway', which should be changed when first configuring the gateway (see 2.10 below).

Enter the password correctly and press enter or tap LOGIN.

Choose an option by tapping on one of the buttons. You will note there is no option to setup WiFi, this must be done via the gateway's direct (WiFi hotspot) mode (see 2.5 above).

Gateway ready mode

2.7.1 When the Gateway is connected to a server and ready it will display the group (channel) name it is

connected to and the number of users in the group (including the Gateway itself).

```
E 192.168.0.66  
MAIN(4)
```

2.7.2 Gateway TX mode

When a GW is receiving a valid PMR voice group call (or triggered from the external GPIO + voice audio if GWGG), it will 'transmit' (TX) to the PoC server on the default group/channel.

The display will show TX followed by the group name.

```
E 192.168.0.66  
TX Main
```

2.7.3 Gateway RX mode

When a GW receives a PoC voice group call (on the displayed default group), it will relay the voice message over the programmed PMR channel (or send voice audio + PTT key logic if

GWGG). The display will show RX followed by the PoC user 'alias' of the calling device.

```
E 192.168.0.66  
RX User Alias
```

2.7.4 No server connection

If there is no connection to the server please check the following ports are open on your firewall:

- 2.7.4.1 To Entel's provisioning server (provisioning.entelpoc.net):

1234 TCP

1235 TCP

1236 TCP

This is to enable remote programming of the Gateway by your Dealer.

- 2.7.4.2 To Entel's E-PoC EMEA E-PoC server (emea1.entelpoc.net *)

80 TCP

443 TCP

4000 TCP

And your unique server port (which will be advised by your Dealer) that is TCP & UDP * If you are using a different server please substitute the address accordingly.

- 2.7.4.3 To Entel's update server (server1.entelpoc.net)

80 TCP

443 TCP

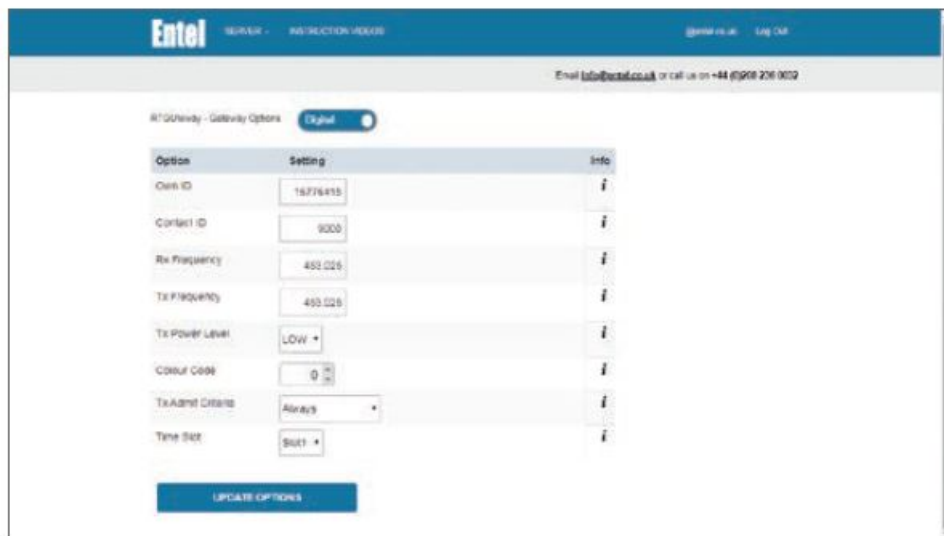
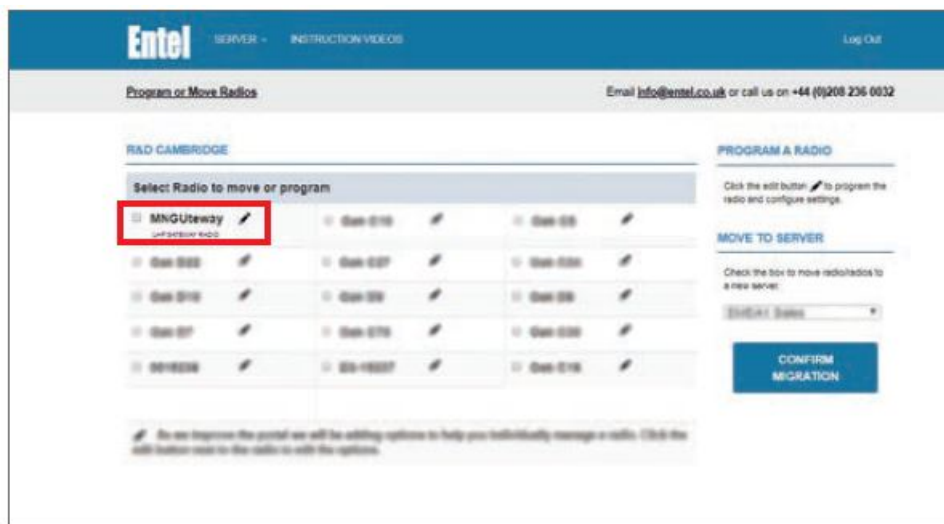
This is to allow for software updates. These ports must be opened to this server address no matter which PoC server address you are using

PROGRAMMING THE GATEWAY

1. **Browse to pocentel.co.uk and log in.**

2. Select the server the Gateway is being used on and click 'Manage radios'.

3. You should see the Gateway serial number at the top of the list.



4. You can now configure the Gateway's E-PoC Group etc. as well as the Gateway radio's RF channel, group etc.
5. You must use Gateway's web page for the following settings.
6. POC Setup This allows changing of the e-PoC credentials configured for the gateway by the provisioning server. It should be used with care as entering the wrong information can mean the gateway will not connect. To revert to the provisioned settings, tap on Set Default.

192.168.0.66:1234

Entel

USER NAME
CTGateway

PASSWORD

SERVER
server1.entelpoc.net

PORT
60022

APPLY

SET DEFAULT

CANCEL

192.168.0.66:1234

Entel

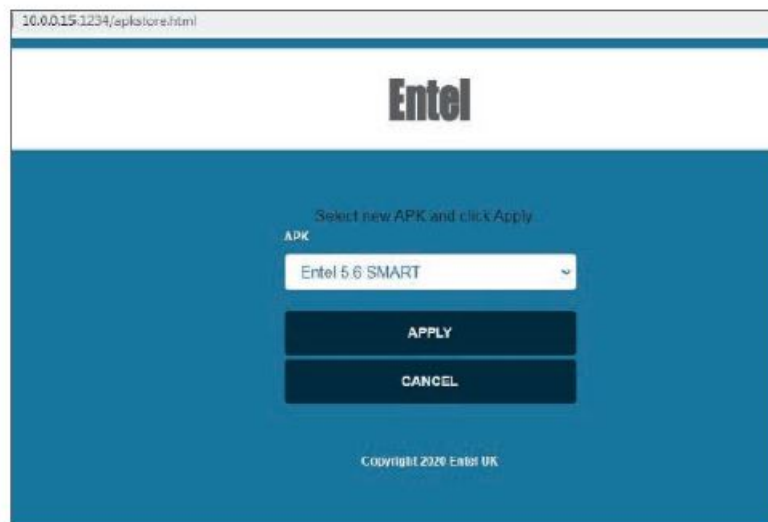
Volume: 81%

OUTPUT %

DONE

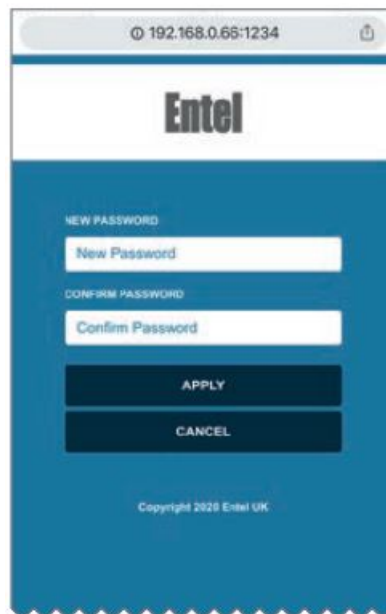
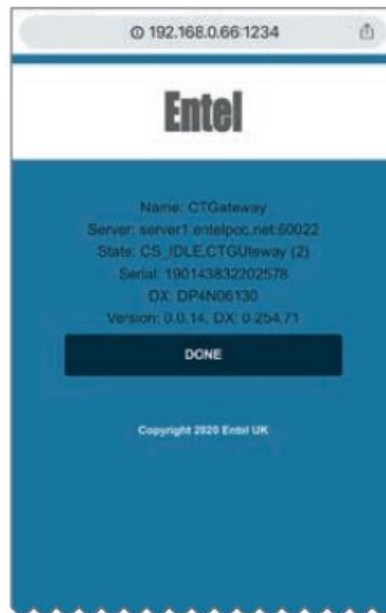
Copyright 2020 Entel UK

7. Changing the gateway audio output level (PMR Network side) This allows changing of the output volume from the gateway (towards the DMR network).
To change move the slider left to decrease volume or right to increase volume. Changes are applied as soon as the slider is moved.
8. Non-Entel and P1 servers If you are using a P1 or a non-Entel PoC server, for example, Tassta, it will be necessary to change the APK version to match your server version. see section APK Store To download and install a new APK, first connect to the gateway via its connected network (see section 2.6). Then select 'APK STORE' Select the required APK from the APK pulldown and click 'APPLY' The APK will be downloaded and installed. Please allow a few minutes for this process to be completed.
The Gateway will display the download process.



After installation, the Gateway will re-boot and connect to your server using the new APK.

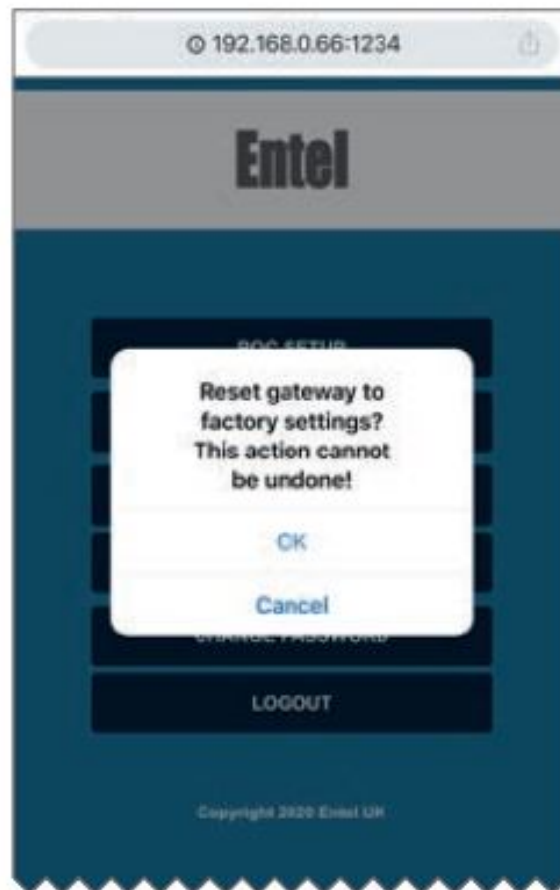
9. About This shows information about the gateway and its current connection. The information is refreshed every few seconds.



10. Change the Gateway Password Enter the new password and enter the same one in the confirmation field and then apply.

You will need to login again with the new password to continue.

11. Factory Reset Factory reset will revert all settings to the factory defaults.



The gateway will restart and it will take several minutes to complete this operation.

WARNING: All PoC, WiFi and network settings configured on the gateway will be lost. Settings configured via pocentel will be retained. Tap OK to proceed or Cancel to revert to previous screen

Supplied accessories:	
CWCxx	Mains to 12v power supply
CATxx	Radio antenna (should be cut to Centre frequency)
CATWIFI	WIFI antenna



Entel's E-PoC software has been optimised in conjunction with TASSTA GmbH

The product shall only be put into service after it has been professionally configured by a specialist radio communications dealer for the EU member state or geographical area it is intended to be operated within.

Intended country of use

	AT	BE	BG	CH	CY	CZ	DE	DK	EE
	ES	FI	FR	EL	HR	HU	IE	IS	IT
	LI	LT	LU	LV	MT	NL	NO	PL	PT
	RO	SE	SI	SK	TR	UK(NI)			

DECLARATION OF CONFORMITY

Hereby, Entel UK Limited declares that the radio equipment type GW3.0 series is in compliance with Directive 2014/53/EU and Radio Equipment Regulations 2017.

The full text of the relevant declaration of conformity is available at the following address:
EU www.entel.co.uk/red UK www.entel.co.uk/UKCA

FCC APPROVAL

Contains FCC ID: TX2-RTL8723BS
Contains IC: 6317A-RTL8723BS

The device complies with part 15 of the FCC Rules.

Operation is subject to the following two conditions:

(1) This device may not cause harmful interference, and (2) This device must accept any interference received, including interference that may cause undesired operation.

This Class B digital apparatus complies with Canadian ICES-003.

Cet appareil numérique de la classe B est conforme à la norme NMB-003 Canada.



Contact

For more information about our products, please contact us:

Entel UK, 320 Centennial Avenue Centennial Park, Elstree, Borehamwood, Hertfordshire WD6 3TJ, United Kingdom

+44 (0)20 8236 0032

info@entel.co.uk

entel.co.uk

Documents / Resources

	<p>Entel GW425 E-PoC Gateway 3.0 Connecting E-PoC to Existing Radio Systems [pdf] User Guide</p> <p>E-PoC Gateway 3.0, Connecting E-PoC to existing radio systems, E-PoC Gateway 3.0 Connecting E-PoC to existing radio systems, GW-UNI, GW425, GW485</p>
--	---