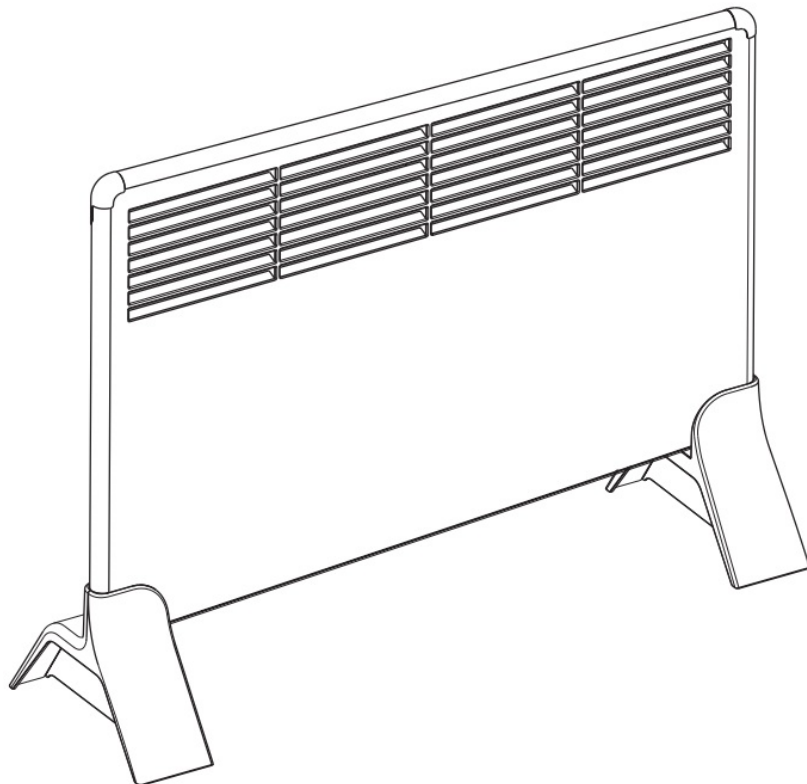


ENSTO BETA-MP Series Portable Heater Instruction Manual

[Home](#) » [ENSTO](#) » ENSTO BETA-MP Series Portable Heater Instruction Manual 

ENSTO BETA-MP Series Portable Heater Instruction Manua

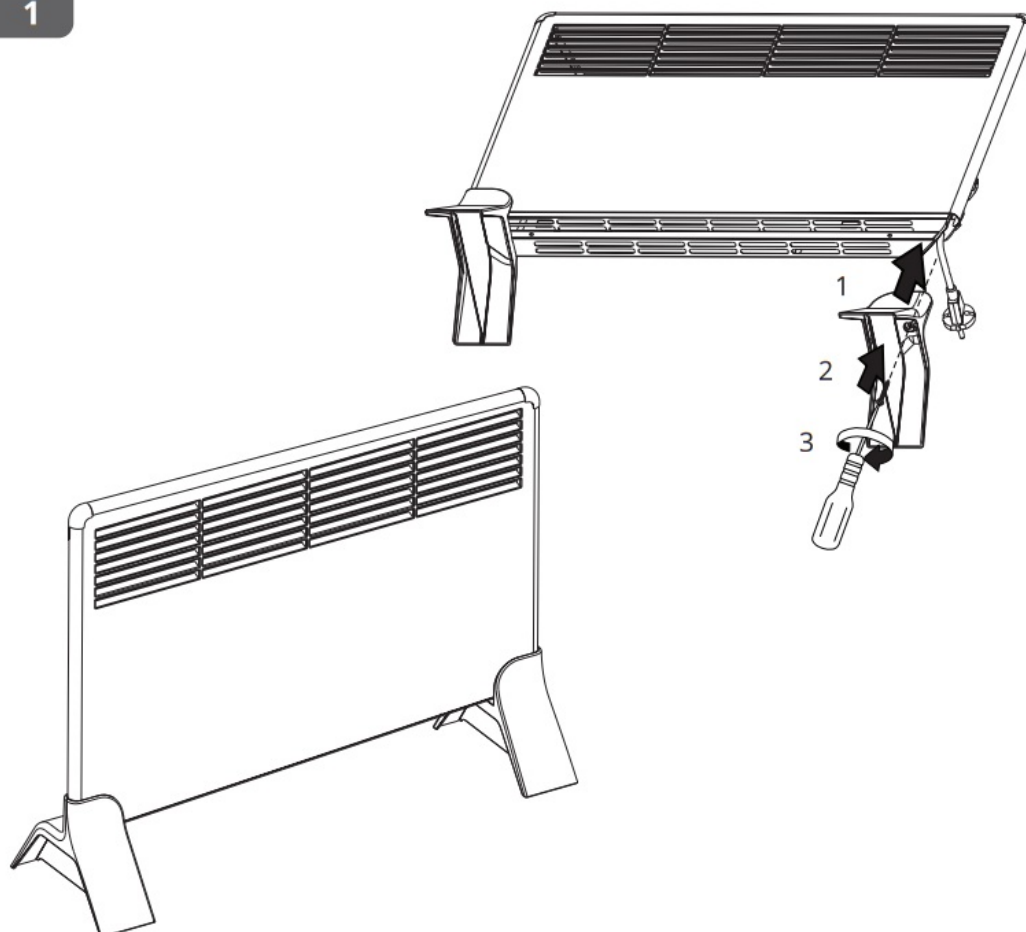


Contents

- [1 BETA-MP Series Portable Heater](#)**
- [2 Safety Instructions](#)**
- [3 User instructions](#)**
- [4 Warranty](#)**
- [5 Documents / Resources](#)**
 - [5.1 References](#)**
- [6 Related Posts](#)**

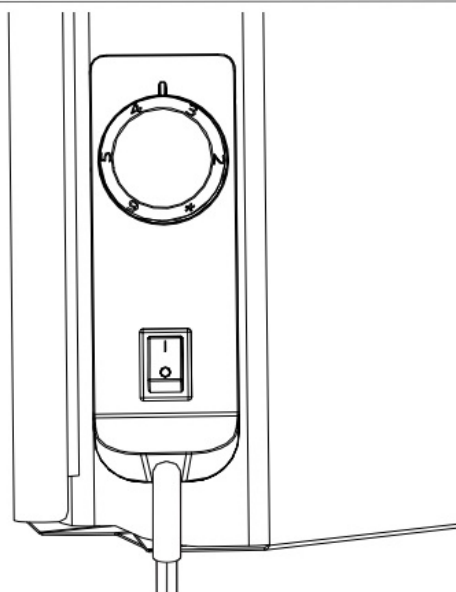
BETA-MP Series Portable Heater

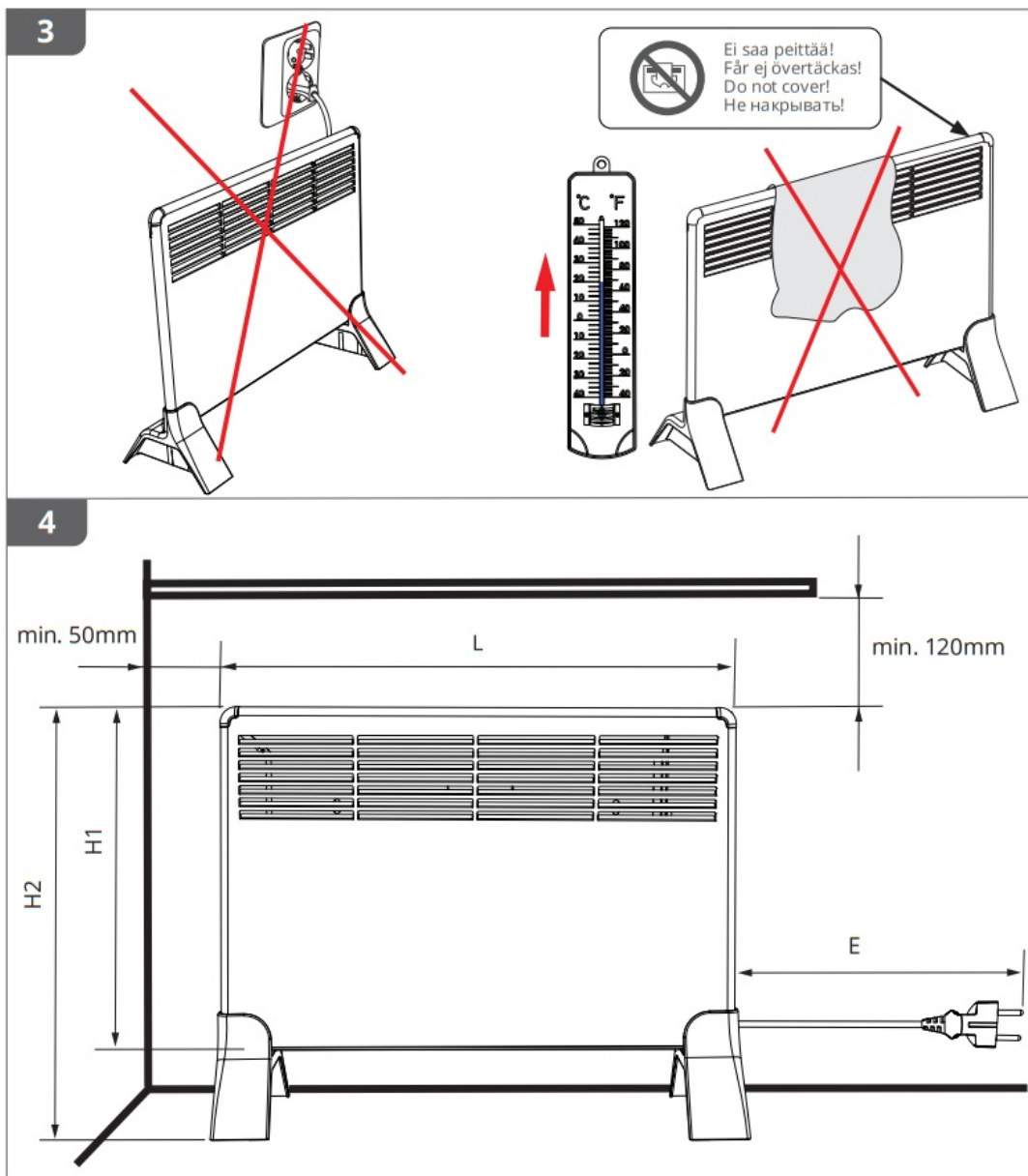
1



2

- * ≈ 6 °C
- 2 ≈ 13 °C
- 3 ≈ 18 °C
- 4 ≈ 24 °C
- 5 ≈ 30 °C
- 6 ≈ 36 °C





TYPE	*P/W	UN	H1/mm	H2/mm	L/mm	E/mm
BETA2-MP	250	230	389	469	451	1000
BETAS-MP	500	230	389	469	585	1000
BETA7-MP	750	230	389	469	719	1000
BETA10-MP	1000	230	389	469	853	1000
BETA15-MP	1500	230	389	469	1121	1750
BETA20-MP	2000	230	389	469	1523	1750

*P \approx +5%, -10%

Safety Instructions

- People who are not able to operate according to the manual must not use this heater.
- Children of less than 3 years should be kept away unless continuously supervised.
- Children aged from 3 years and less than 8 years shall only switch on/off this heater provided that it has been

placed or installed in its intended normal operating position and they have been given supervision or instruction concerning the use of this heater in a safe way and understand the hazards involved. Children aged from 3 years and less than 8 years shall not plug in, regulate and clean this heater or perform user maintenance.

- **CAUTION** – Some parts of this heater can become very hot and cause burns. Particular attention has to be where children and vulnerable people are present.

User instructions

- Portable electric space heaters are only suitable for well-insulated rooms or occasional use.
- Operating temperature: -20 ... +30 °C.
- BETA-MP heaters are equipped with a mechanical thermostat.
- Use a portable heater on a horizontal and stable surface.
- Do not use a portable heater immediately below a socket outlet.
- Do not use a portable heater in the immediate surroundings of a bath, a shower, or a swimming pool.
- Do not use a portable heater, if it has been dropped.
- Do not use a portable heater, if there are visible signs of damage.
- **WARNING** – In order to avoid overheating, do not cover this heater.
- **WARNING** – Do not use a portable heater in small rooms when they are occupied by persons not capable of leaving the room on their own unless constant supervision is provided.
- **WARNING** – To reduce the risk of fire, keep textiles, curtains, and any flammable material a minimum distance of 1 meter from the air outlet.
- If the supply cord is damaged, it must be replaced by the manufacturer or a person with appropriate qualifications.

Environmental Aspects



The heater's cardboard packing is suitable for recycling.

When the heater is at the end of the life cycle, it must be disposed of properly according to local recycling guidelines.

Warranty

- The warranty period for Ensto Beta heaters is 5 years from the date of purchase but no longer than 6 years from the date of manufacture. The manufacture date is located on the rating label.
- For warranty terms, see www.ensto.com/building-systems

ENSTO

Ensto Building Systems Finland Oy
Ensio Miettisen katu 2, P.O. Box 77
FIN-06101 Porvoo, Finland
Tel. +358 204 76 21

www.ensto.com/building-systems

RAK123

2022-05-09

© 2021 Ensto Building Systems



Documents / Resources

	ENSTO BETA-MP Series Portable Heater [pdf] Instruction Manual BETA-MP Series Portable Heater, BETA-MP Series, Portable Heater, Heater
--	--

References

- [User Manual](#)

[Manuals+](#), [Privacy Policy](#)

This website is an independent publication and is neither affiliated with nor endorsed by any of the trademark owners. The "Bluetooth®" word mark and logos are registered trademarks owned by Bluetooth SIG, Inc. The "Wi-Fi®" word mark and logos are registered trademarks owned by the Wi-Fi Alliance. Any use of these marks on this website does not imply any affiliation with or endorsement.