



# Enping Bullet Trading RUS16 Wireless Microphone System User Manual

[Home](#) » [Enping Bullet Trading](#) » Enping Bullet Trading RUS16 Wireless Microphone System User Manual 

## Contents

- [1 Enping Bullet Trading RUS16 Wireless Microphone System](#)
- [2 Preface](#)
- [3 Receiver](#)
- [4 Receiver Installation Instructions](#)
- [5 LCD Display Instruction](#)
- [6 Bodypack Transmitter](#)
- [7 Precautions](#)
- [8 Performance Connection](#)
- [9 Security and Environment](#)
- [10 FCC STATEMENT](#)
- [11 Documents / Resources](#)

## Enping Bullet Trading

**Enping Bullet Trading RUS16 Wireless Microphone System**



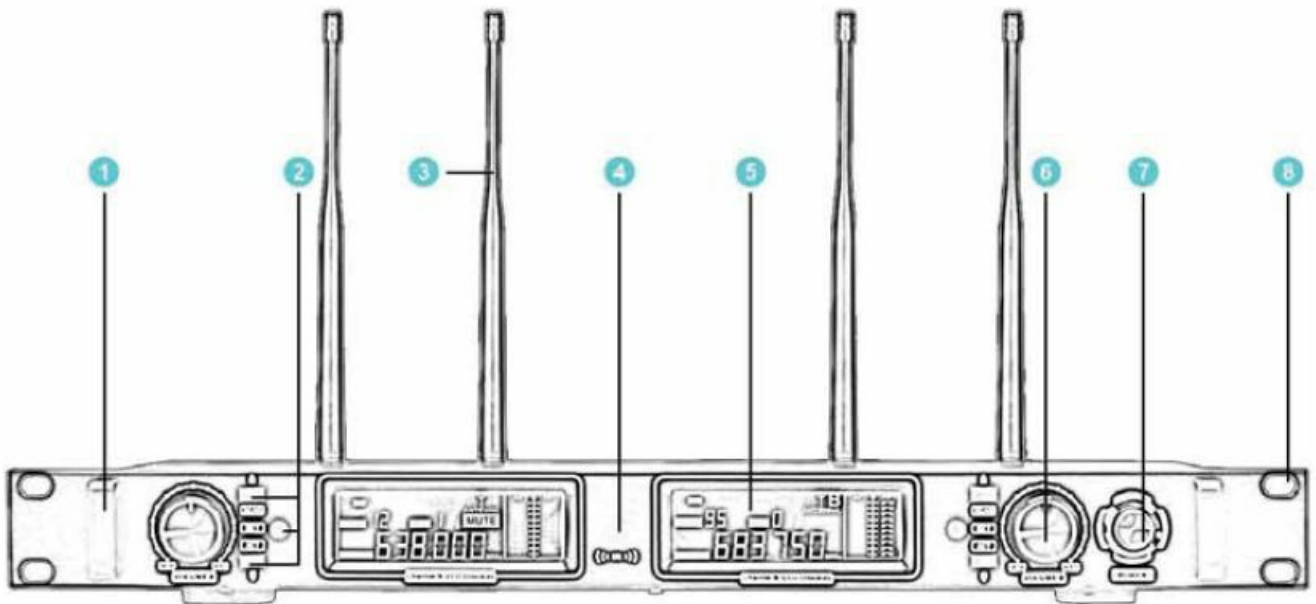
## Preface

- Thank you for your support and trust in our company in purchasing our multi-channel microphone products.
- In order to maximize the performance of this product, please read the instruction manual carefully before use to understand the correct operation method and get a good experience.

## Receiver

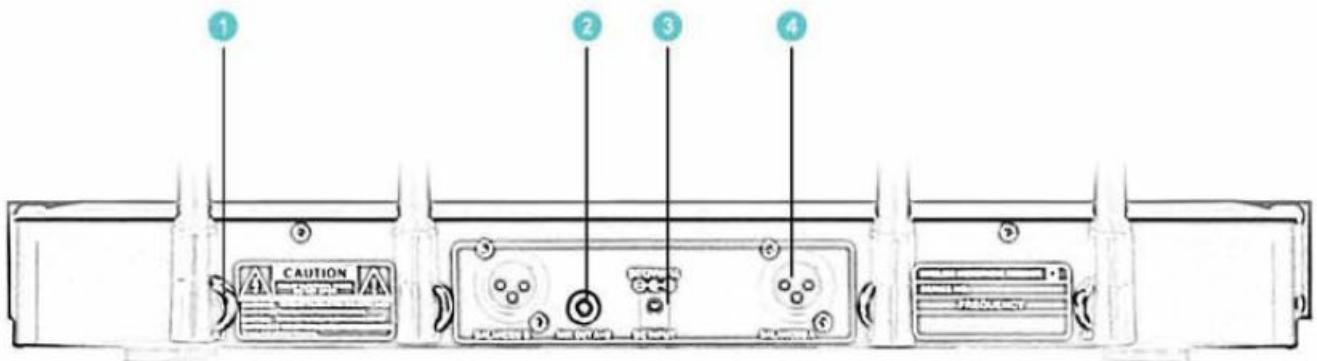
### Front View

1. Handle
2. Control buttons
3. Antenna
4. IR sync window (matching)
5. LED display
6. Volume knob
7. Power (ON/OFF) button
8. Cabinets installing hole



### Back View

1. Antenna base
2. 6.35 mm mix output
3. DC power input
4. XRL balanced output

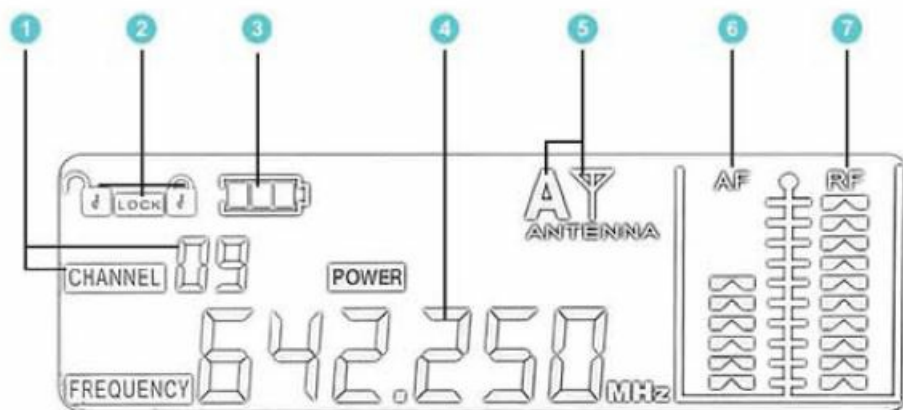


### Receiver Installation Instructions

1. The two antennas are installed on the antenna base A and B of the back panel. and the angle between the two antennas should be adjusted at about 90 degrees.
2. Plug the external power supply on the back panel. (Note that the local supply voltage should match the requirements of this system)
3. Adjust the volume to the minimum. press and hold the power switch for about 1 – 2 seconds after turning on the power. at this time the LCD should display a normal screen.
4. Adjust each function to keep the receiver in the desired state. For detailed instructions. see LCD panel operating instructions)
5. After use. press the power switch for 2 to 3 seconds to turn off the power supply. The LCD screen turns off automatically.

### LCD Display Instruction

1. Channel number
2. Lock function
3. Transmitter battery lite
4. Frequency number
5. Antennas status
6. Audio signal level
7. Transmitting signal level



### How to Correctly Hold a Mic?



### Bodypack Transmitter

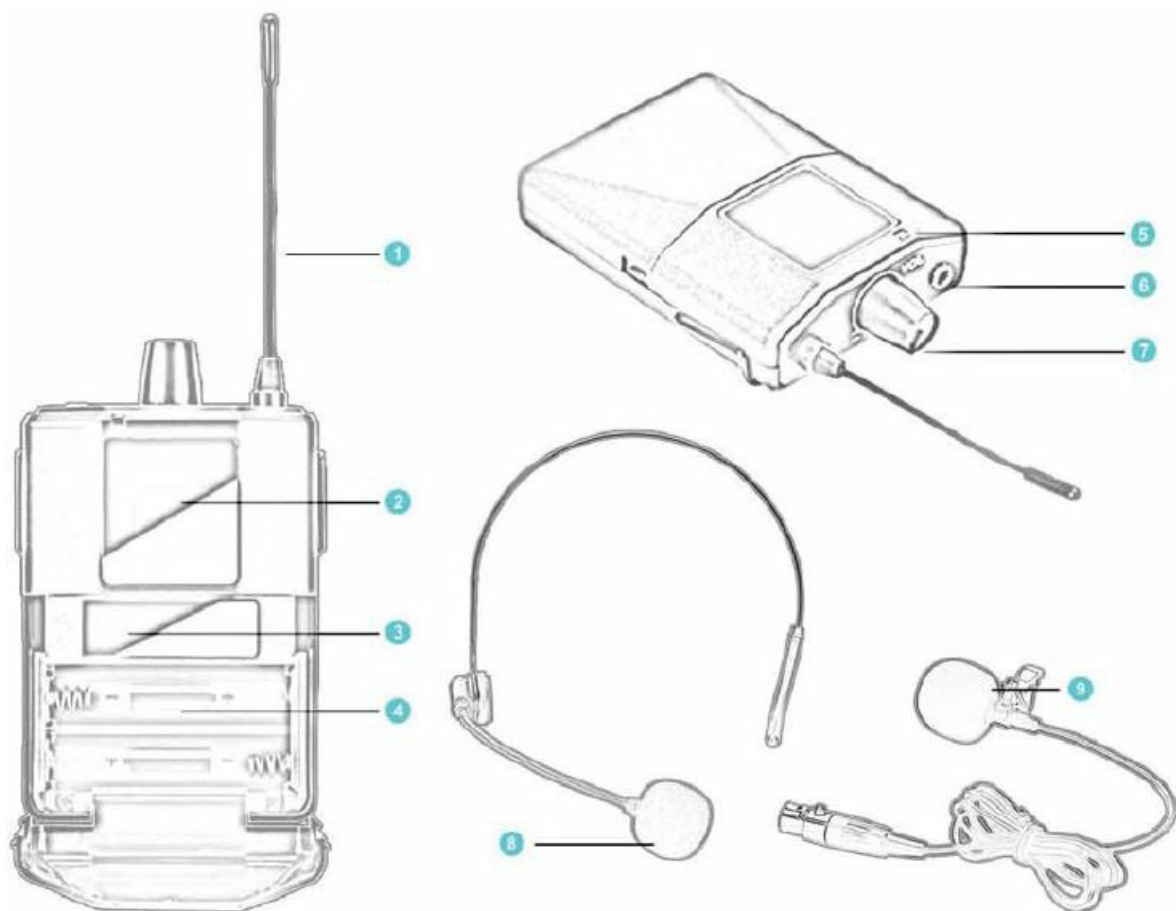
#### Separated View

1. Transmitter antenna
2. LCD display
3. IR sync window
4. Battery case (AA)

5. LED indicator
6. Microphone Interface
7. Volume & Power(NO/OFF)
8. Head microphone
9. Lavalier clip microphone

### Microphone Selection

Depending on your needs, you can choose to use a headset or Lavalier microphone. It is also possible to use another condenser microphone with the same interface according to the usage habits.



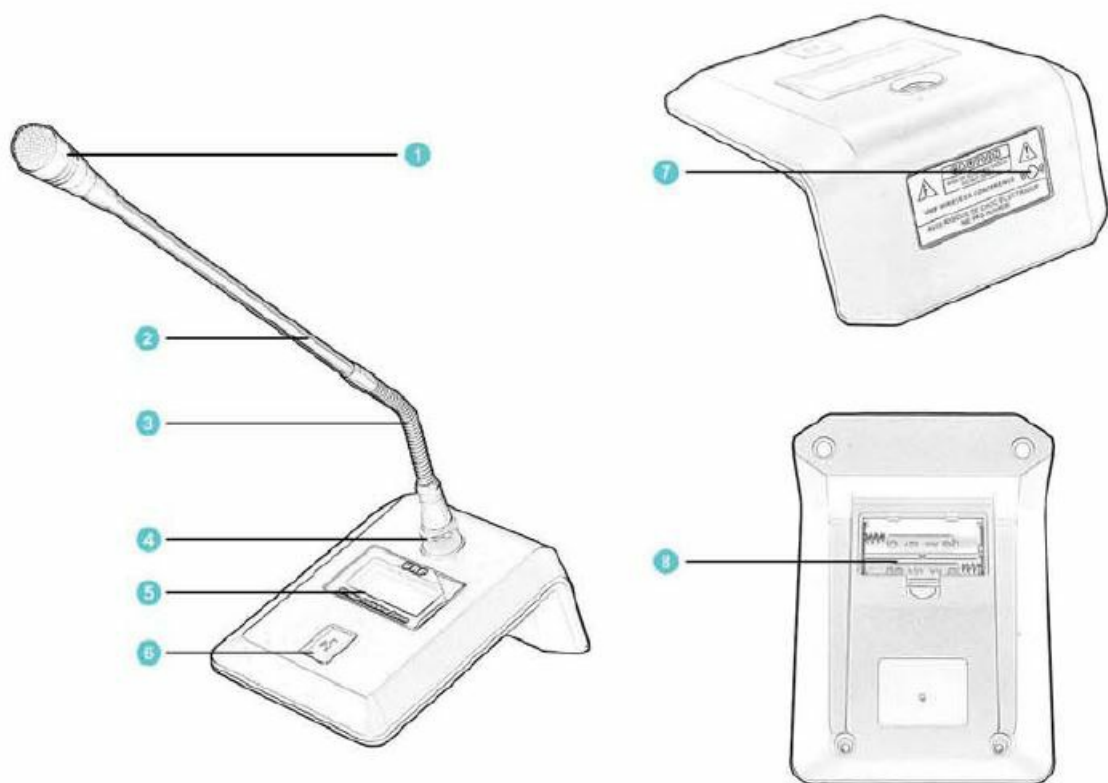
### Conference Transmitter

#### Separated View

1. Microphone capsule
2. Moveable microphone
3. Bendable tube
4. Microphone interface
5. LCD display
6. Power button (ON/OFF)
7. IR sync window
8. Battery case (AA)

### Microphone Replacement

You can replace a different conference microphone with the same interface.



## How To Sync The Transmitter?

1. Connect the power to the receiver and install the microphone transmitter with the battery.
2. Turn on the receiver and microphone transmitter.
3. Scan automatically select the frequency:  
Click the "Set" key twice and after the receiver screen displays "SCAN". wait about 1 second for the receiver to automatically enter the scan state. Waiting for the system to complete the scan will automatically enter the matching standby state and the "IR" red light Hashes.

### Manual and precise frequency selection

Directly click the "Up" or "Down" keys to select a suitable channel. then press the "Set" key to enter the matching standby state. and the "IR" red light flashes.

4. After confirming that the red pairing light on the receiver is blinking. point the microphone transmitter's "IR" frequency pairing window (usually near the microphone screen position) at the flashing red frequency light. When the red "IR" pair light of the receiver stops blinking and the display signal appears. it indicates that the frequency pair is successful.

This device has a frequency lock function. you can long press the "Set" key of the receiver until the screen shows that is. the lock is successtul. You need to unlock it. you can also unlock it by pressing and holding the "Set" key

**Note:** It the operating tail. please follow the steps and do it again.

## Precautions

1. Before powering on. make sure that the microphone volume is adjusted to a minimum state. so as to avoid the current pulse generated to break the PA unit of the speaker when the system is turned on.

2. Due to some conditions. when the local power is not grounded and the speaker emits a " current sound. please use the XRL balanced output interface to connect instead of the 6.35mm output interface.
3. When using equipment such as power amplifiers of the combined sound system. please do not make the microphone receiver have metallic contact with other equipment to avoid current signal interference.
4. Some models of microphone systems are equipped with a one-button anti-squeaking function. please keep this function turned off under normal circumstances. The anti-squeaking feature is only available in extreme cases where the echo acoustic squeaking cannot be eliminated.
5. When using the wireless microphone system. please confirm the control status of the local radio wave frequency. and ensure that the local radio wave control band does not conflict with the frequency band used by the wireless microphone system. so as to avoid frequency interruption. channelling. interference. and other phenomena during use.
6. Under normal circumstances. if you want to get the rated wireless use distance, you need to put the system in an open place to use. Installing the system indoors or in a cabinet due to personal needs will affect the protective wireless use distance of the system. Note: Never install the system in an all-metal cabinet or room. as metal shielding may disable the wireless functionality of the system.

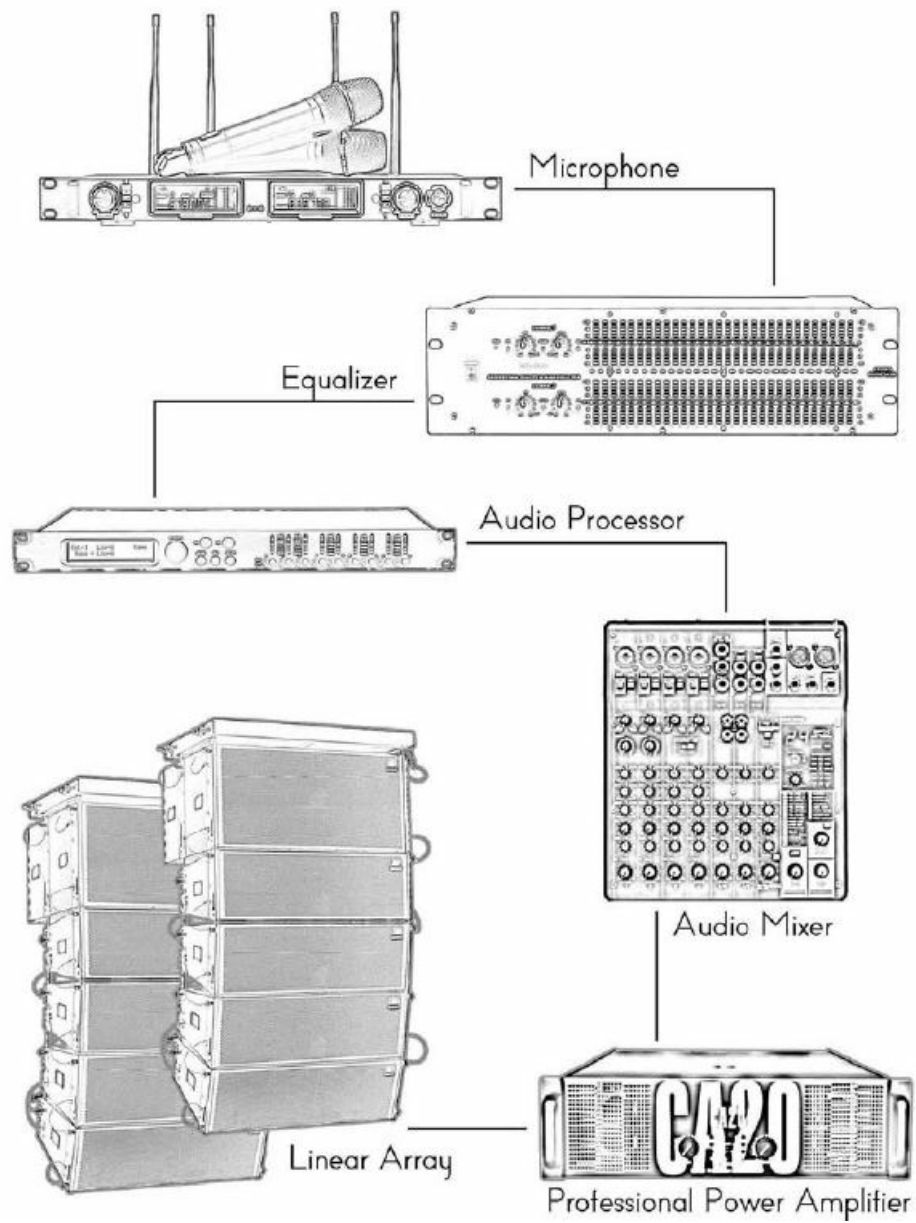
### **Receiver parameters**

- **Main unit size:** ELA 1u standard
- **Channel:** Dual channel
- **Frequency Stability:**  $\pm 15$  ppm
- **Frequency range:** UHF540-590MHz
- **Operating range:** >100 meters (without signal Occlusion)
- **Shock Resistant:** PLL phase lock oscillation
- **Sensitivity:** < -108dBm
- **Bandwidth:** Wireless 50MHz
- **Signal-to-noise ratio:** > 85dB
- **T.H.D:** < 0.5% @ 1KHz
- **Frequency response:** 50 – 14000 Hz
- **Power supply:** 100-240v AC 50/60 Hz

### **Transmitter parameters**

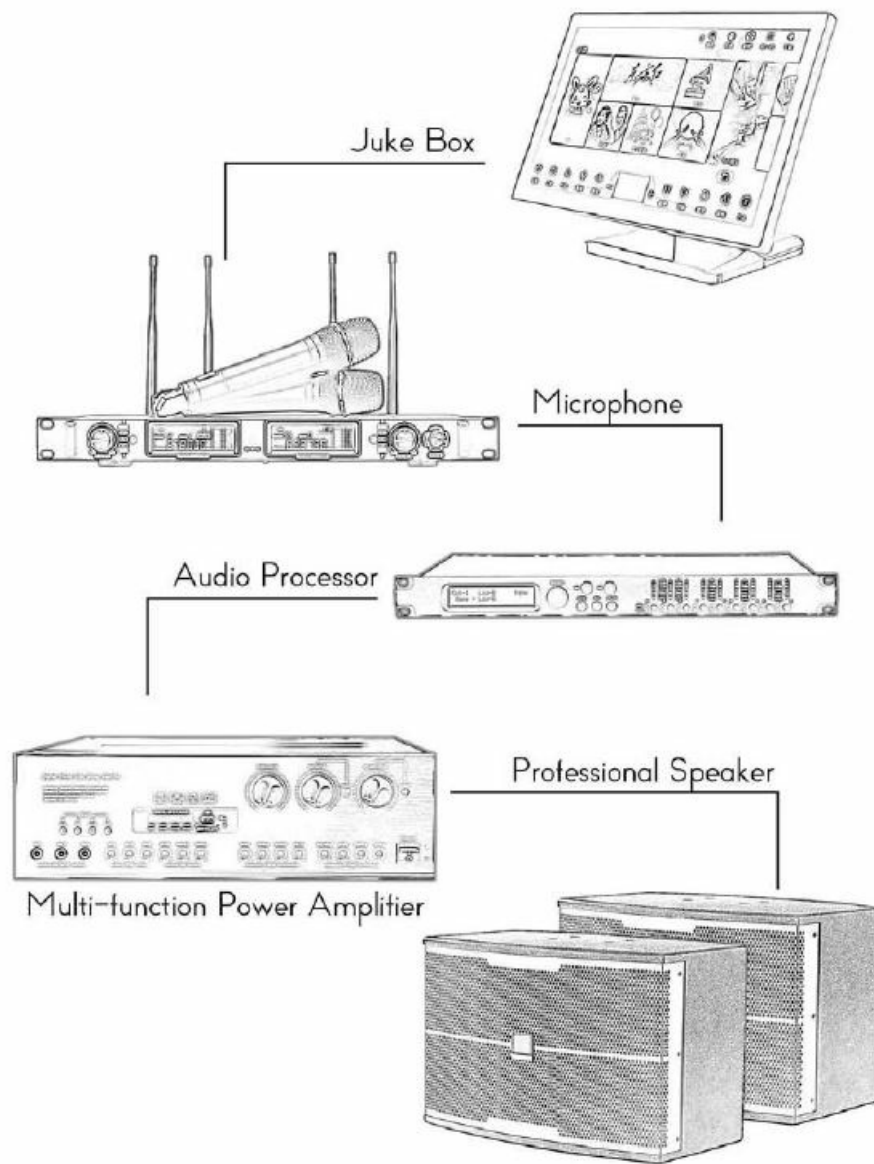
- **Frequency range:** UHF 540-590MHz
- **Shock Resistant:** PLL phase lock oscillation
- **Harmonics:** <50dB
- **Bandwidth:** Wireless 50MHz
- **Microphone directivity:** Cardioid
- **Output power:** 10dBm
- **Battery:** 500mA lithium battery (AA)
- **Current consumption:** 130mA

### **Performance Connection**



## Karaoke Connection





## Security and Environment

### Environment

Avoid close radiation and heat. Don't expose the devices in sunny, dusty, rainy and vibrant condition.

### Security

Keep the devices under cool conditions. Don't put it in the air vent.

1. In order to reduce the risk of electric shock, please do not open the chassis. There is no user adjustment option inside the product.
2. In order to reduce the risk of electric shock or fire, please do not expose the internal instrument parts of this product to rain or wet places. Its cleaning is required. use a dry towel.
3. Before using this product, please make sure that this product has been connected to the grounding wire to prevent the risk of electric shock. For your safety, do not arbitrarily cut the wires.
4. When preparing to connect the system's AC power supply, please do not place the wire next to many people or move objects to defend the material is destroyed. Once the surface of the cable is damaged, disconnect the power supply immediately and replace the new cable with a new one before continuing to use it.

A lightning bolt shape symbol with an arrow inside the positive triangle is used to alert the user that there is an uninsulated dangerous voltage in the accessory in the product, which will produce enough field strength on the

human body to cause the risk of electric shock. The exclamation point in the positive triangle is used to remind the user to carefully read the manual before starting to use the product.

FCC STATEMENT

FCC Warning

This device complies with part 15 of the FCC Rules. Operation is subject to the following two conditions:

- 1. this device may not cause harmful interference, and
- 2. This device must accept any interference received, including interference that may cause undesired operation.

Changes or modifications not expressly approved by the party responsible for compliance could void the user's authority to operate the equipment. This equipment has been tested and found to comply with the limits for a Class B digital device, pursuant to Part 15 of the FCC Rules. These limits are designed to provide reasonable protection against harmful interference in a residential installation. This equipment generates uses and can radiate radio frequency energy and, if not installed and used in accordance with the instructions, may cause harmful interference to radio communications. However, there is no guarantee that interference will not occur in a particular installation. If this equipment does cause harmful interference to radio or television reception, which can be determined by turning the equipment off and on, the user is encouraged to try to correct the interference by one or more of the following measures:

- Reorient or relocate the receiving antenna.
- Increase the separation between the equipment and the receiver.
- connect the equipment to an outlet on a circuit different from that to which the receiver is connected.
- Consult the dealer or an experienced radio/TV technician for help.

The device has been evaluated to meet general RF exposure requirements. The device can be used in portable exposure conditions without restriction.



**Note:** Due to the continuous improvement of the product. the parameters may change without notice. The picture may differ from the actual product. and the actual product shall prevail.

Documents / Resources

|  |  |
|--|--|
|  | <p><a href="#">Enping Bullet Trading RUS16 Wireless Microphone System</a> [pdf] User Manual<br/>RUS16 Wireless Microphone System, RUS16, Wireless Microphone System, Microphone System</p> |
|--|--|

