




**ENTHMS3  
100WTEW  
Theorem 3  
Mouse**



## ENHANCE ENTHMS3100WTEW Theorem 3 Mouse User Guide

[Home](#) » [ENHANCE](#) » ENHANCE ENTHMS3100WTEW Theorem 3 Mouse User Guide 

### Contents

- [1 ENHANCE ENTHMS3100WTEW Theorem 3 Mouse](#)
- [2 Product Information](#)
- [3 Product Usage Instructions](#)
- [4 FAQ](#)
- [5 Downloading the Theorem 3 Mouse Software](#)
- [6 Installing the Theorem 3 Mouse Software](#)
- [7 Main menu](#)
- [8 Button menu](#)
- [9 Macro menu](#)
- [10 Performance menu](#)
- [11 Backlight menu](#)
- [12 Contact](#)
- [13 Documents / Resources](#)
  - [13.1 References](#)
- [14 Related Posts](#)



**ENHANCE ENTHMS3100WTEW Theorem 3 Mouse**



### **Specifications:**

- Model Number: ENTHMS3100WTEW

### **Product Information**

The ENHANCE Theorem 3 Mouse is a high-performance gaming mouse that allows users to customize settings such as LED colors, button programming, music reactive lighting, macro functions, performance adjustments, and LED lighting modes.

### **Product Usage Instructions**

#### **Downloading the Theorem 3 Mouse Software**

To download the software for your ENHANCE Theorem 3 mouse, follow these steps:

1. Visit [www.enhancegaming.com/support](http://www.enhancegaming.com/support)
2. Select your product from the Drivers and Downloads section

#### **Installing the Theorem 3 Mouse Software**

After downloading the software, you can customize your mouse settings using the following menus:

1. Main Menu
2. Button Menu – Assign functions to buttons and enable music-reactive lighting
3. Macro Menu
4. Performance Menu
5. Backlight Menu – Customize LED lighting modes and patterns

### **FAQ**

## Q: How can I contact support for the ENHANCE Theorem 3 Mouse?

A: You can reach ENHANCE support at [ENHANCEgaming.com/support](https://www.enhancegaming.com/support) or by calling 1-[866-796-7324](tel:866-796-7324).

## Downloading the Theorem 3 Mouse Software

The ENHANCE Theorem 3 mouse software is required to customize your mouse settings including LED color options and button programming. To download the software, please visit [www.enhancegaming.com/support](https://www.enhancegaming.com/support) and select your product from Drivers and Downloads

## Installing the Theorem 3 Mouse Software

Prior to installing the Theorem 3 mouse software, please ensure to close all open applications. It is also recommended that any existing mouse application software is uninstalled from the computer before installing the Theorem 3 mouse software.

1. Open the folder on your computer containing the downloaded Theorem 3 mouse software.
2. Double-click on the ENHANCE Theorem 3 Mouse Software Setup.exe application file to start the installation.  
Follow the onscreen instructions.
3. Once the installation is complete, click Finish. It is recommended that you restart the PC before using the software.

## Main menu



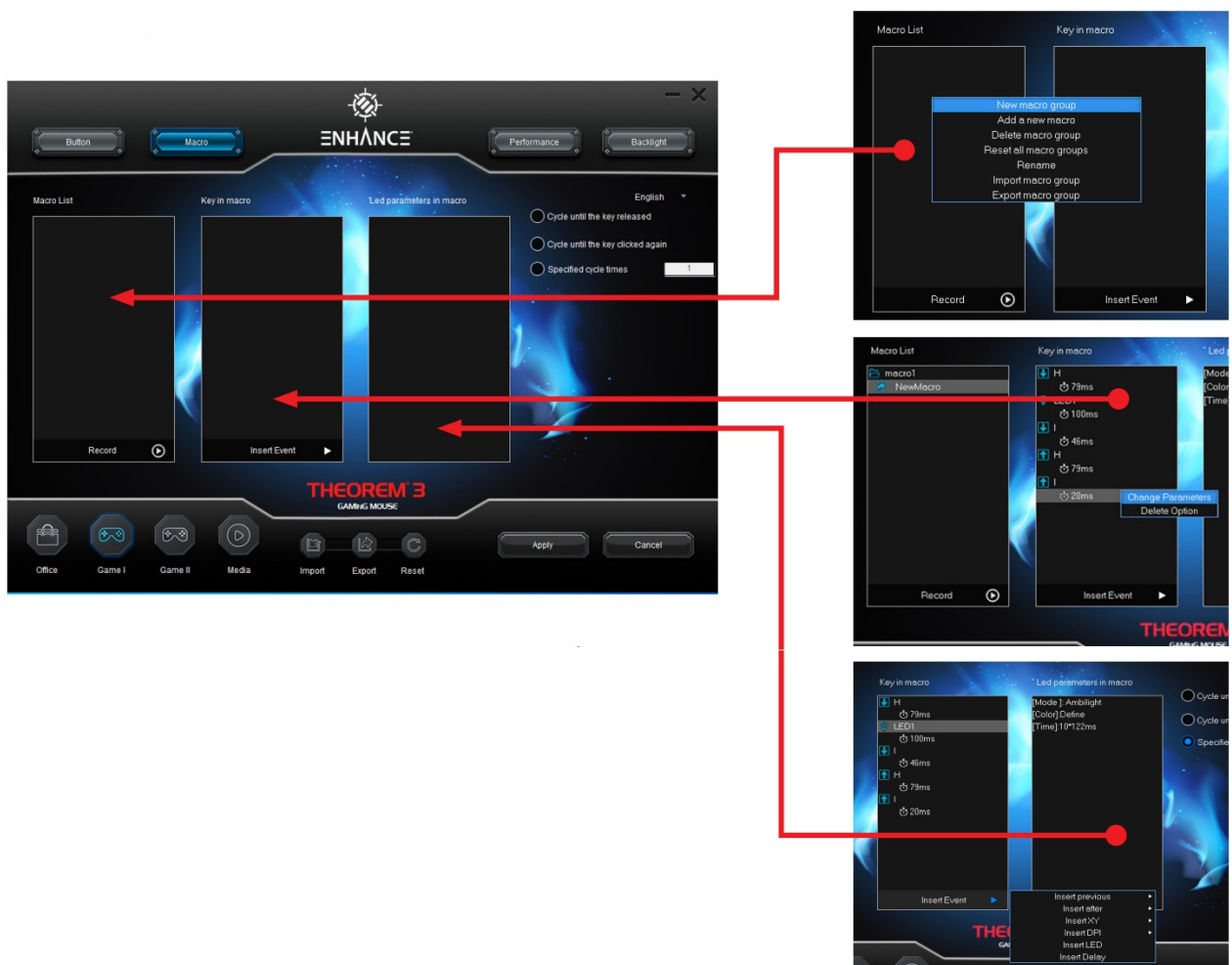
- Profiles: There are 4 profiles that can be updated Office – Game I – Game II – Media. When different mouse settings are used for various games or applications, profiles allows you to save the mouse settings for each individual game or application.
- Import: A profile saved on the computer can be imported into the software and loaded onto the mouse.
- Export: A profile can be saved to the hard drive for importing at later time.
- Reset: Returns the settings to the software default.
- Apply: After making changes, select Apply to save the changes. Important: After making changes, you must select Apply to copy the changes to the mouse.
- Cancel: Cancels changes and returns to the previously saved settings.

## Button menu



- Assign Buttons: Click any of the 1-7 buttons to assign a function from the drop-down menu.
- Music-lighting: This option allows you to have music-reactive lighting on the mouse. Switch ON and select one of the 3 options.

## Macro menu



- Macro List: On the Macro page you can Record, Modify or Delete a macro.

- Right-click inside the Macro List and create a Macro Group. Then you can right-click the group and create and manage the macros inside of it. Once macro is created you can click the record button to record the keystrokes. They will be recorded in real time.
- Key in macro: On this list you can modify or insert the macro events. To change a parameter or delete an event, right-click the event. Click Insert for a menu of options.
- LED parameters in macro: Displays any LED effects defined in the macro
- Cycle: Select from the 3 cycle options on the right side of the menu.

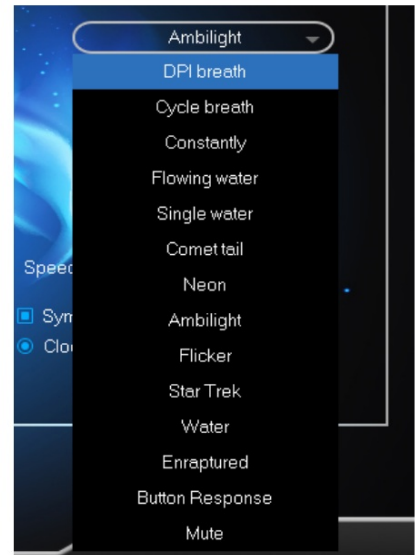
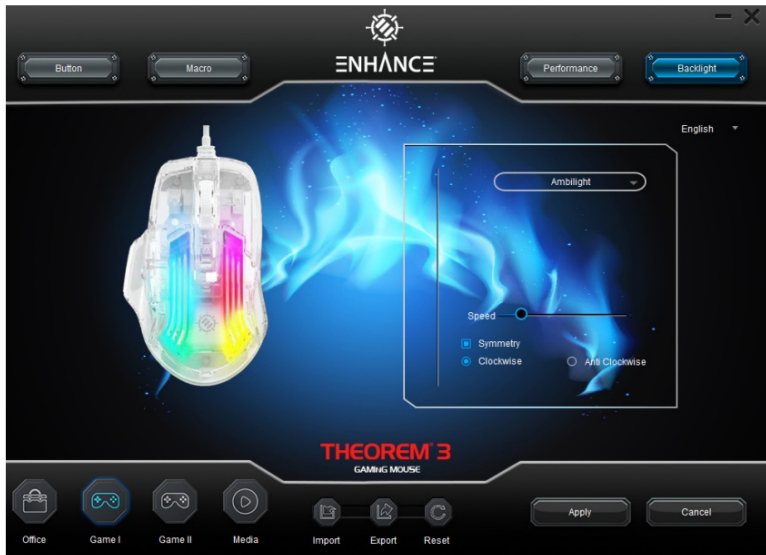
## Performance menu



- Mouse Sensitivity: This adjusts the responsiveness of your mouse movements. Increasing the value will make the mouse more sensitive.
- Double Click Speed: Here you can set how far apart two clicks can be while still registering a double-click. The higher the value, the faster the clicks must follow one another to register a double-click.
- Scroll Speed: The scroll wheel moves the on-screen image up or down at a given rate. A higher value will allow for more scrolling with fewer turns of the mouse wheel.
- DPI Control: Here you can select DPI, turn on/off DPI steps and change their corresponding LED colors.

## Backlight menu






- LED Lighting: Select from 7 different LED modes and directional patterns.

2024 AP Global, Inc. All rights reserved. Accessory Power, the Accessory Power logo, ENHANCE, the ENHANCE logo, THEOREM and other marks and logos are either registered trademarks or trademarks of AP Global, Inc. in the United States and/or other countries. All other trademarks are the property of their respective owners.

## Contact

- [ENHANCEgaming.com/support](https://enhancegaming.com/support)
- 1-[866-796-7324](tel:866-796-7324)

## Documents / Resources

	<a href="#">ENHANCE ENTHMS3100WTEW Theorem 3 Mouse [pdf] User Guide</a> ENTHMS3100WTEW Theorem 3 Mouse, ENTHMS3100WTEW, Theorem 3 Mouse, Mouse
---	---

## References

- [ENHANCE](#)
- [ENHANCE](#)
- [User Manual](#)

### [Manuals+](#), [Privacy Policy](#)

This website is an independent publication and is neither affiliated with nor endorsed by any of the trademark owners. The "Bluetooth®" word mark and logos are registered trademarks owned by Bluetooth SIG, Inc. The "Wi-Fi®" word mark and logos are registered trademarks owned by the Wi-Fi Alliance. Any use of these marks on this website does not imply any affiliation with or endorsement.