

**ENGO
CONTROLS**
EREPEATER
ZigBee
Network
Repeater



ENGO EREPEATER ZigBee Network Repeater User Guide

[Home](#) » [ENGO](#) » ENGO EREPEATER ZigBee Network Repeater User Guide 

Contents

- [1 ENGO EREPEATER ZigBee Network Repeater](#)
- [2 Product Information](#)
- [3 Product Usage Instructions](#)
- [4 INTRODUCTION](#)
- [5 PRODUCT COMPLIANCE](#)
- [6 SAFETY INFORMATION](#)
- [7 Technical specification](#)
- [8 LED diode indications](#)
- [9 Installation of the repeater in the app](#)
- [10 Documents / Resources](#)
 - [10.1 References](#)



ENGO EREPEATER ZigBee Network Repeater



Product Information

Specifications:

- Power supply: 230V AC 50Hz
- Communication: ZigBee 3.0 2.4GHz
- Dimensions: 40 x 24 x 82 mm
- LED diode indications:
 - Blue LED flashing: Device is in pairing mode with ZigBee network
 - Blue LED steady: Device has been added to the ZigBee network
 - LED off: Repeater is not connected to power supply

Product Usage Instructions

Installation:

1. Ensure your router is within range of your smartphone and you are connected to the Internet for quicker pairing.
2. **STEP 1 – DOWNLOAD ENGO SMART APP:** Download the ENGO Smart app from Google Play or Apple App Store and install it on your smartphone.
3. **STEP 2 – REGISTER THE NEW ACCOUNT:** Follow the instructions in the app to create a new account.
4. **STEP 3 – INSTALLATION OF THE ZigBee 3.0 REPEATER IN THE APP:**
 1. Ensure the ZigBee gateway is added to the app.
 2. Connect the repeater to power supply. The blue LED should flash.
 3. If not flashing, perform a factory reset (see Factory Reset section).
 4. Enter the gateway interface in the app.
 5. In the Zigbee devices list, select Add devices.
 6. Wait for the device to be found by the application and click Done.

Factory Reset:

To perform a factory reset and enter pairing mode:

1. Unplug and plug the repeater three times with intervals of 3 seconds.
2. The LED on the device will flash, indicating it has been removed from the ZigBee network and gateway.
3. The repeater will enter pairing mode automatically for re-adding.

FAQs

- **Q: Can the repeater operate standalone?**

No, the repeater cannot operate standalone. It requires the use of EGATEZB ZigBee 3.0 gateway.

- **Q: What EU Directives does the product comply with?**

The product complies with EU Directives: 2014/30/EU, 2014/35/EU, 2014/53/EU, 2011/65/EU.

- **Q: What should I do if the repeater's blue LED is not flashing during installation?**

If the blue LED is not flashing, perform a factory reset by unplugging and plugging the repeater three times at intervals of 3 seconds to enter pairing mode.

INTRODUCTION

Repeater increases wireless network signal range for all Engo devices which works over ZigBee 3.0 protocol. It helps to improve radio signal range in places, where wireless network is disturbed by distance or other obstacles (concrete walls, reinforced ceilings, etc.). This device cannot operate standalone. In order to use it EGATEZB ZigBee 3.0 gateway is needed.

WARNING: This product must be used with EGATEZB ZigBee 3.0 gateway (purchased separately).

PRODUCT COMPLIANCE

This product complies with the following EU Directives: 2014/30/EU, 2014/35/EU, 2014/53/EU, 2011/65/EU.

SAFETY INFORMATION

Use in accordance with national and EU regulations. Use the device only as intended, keeping it in a dry condition. The product is for indoor use only. Please read the entire manual, before installation or use.

WARNING: For the entire installation, there may be additional protection requirements, which the installer is responsible for.

Technical specification

Power supply	230V AC 50Hz
Communication	ZigBee 3.0 2,4GHz
Dimensions [mm]	40 x 24 x 82

LED diode indications

	EXPLANATION
LED diode flashes blue	The device is in pairing mode with ZigBee network (when device didn't previously added to the ZigBee 3.0 network, or after recovery factory re set)
LED diode lights up blue	The device has been added to the ZigBee 3.0 network
LED diode is off	Repeater is not connected to power supply 230V

Installation of the repeater in the app

Make sure your router is within range of your smartphone. Make sure you are connected to the Internet. This will reduce the pairing time of the device.

STEP 1 – DOWNLOAD ENGO SMART APP

Download the ENGO Smart app from Google Play or Apple App Store and install it on your smartphone.

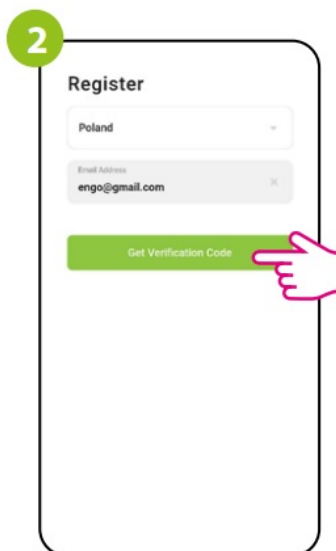


STEP 2 – REGISTER THE NEW ACCOUNT

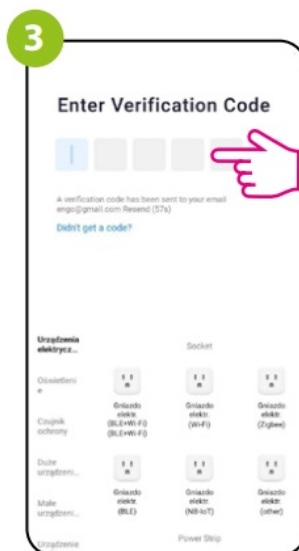
To register a new account, please follow the steps below:



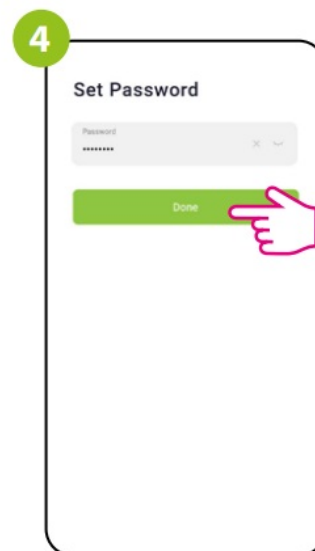
To register a new account, please follow the steps below:



Then set the login password.



Enter the verification code received in the email. Remember that you only have 60 seconds to enter the code!



Enter your e-mail address to which the verification code will be sent.

STEP 3 – INSTALLATION OF THE ZigBee 3.0 REPEATER IN THE APP

After installing the app and creating an account:

1



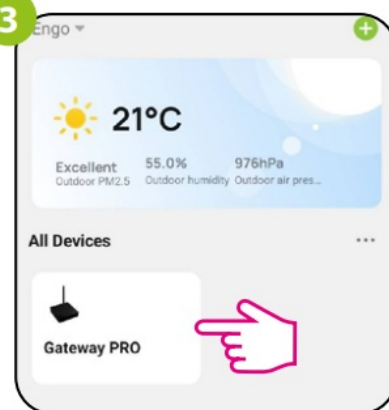
Make sure you have added ZigBee gateway to app.

2



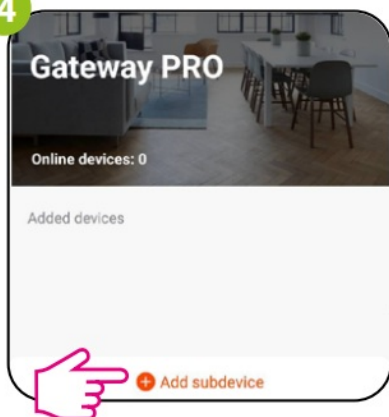
Make sure the repeater is connected to power supply. The blue LED should flash. If not, perform factory reset (check „Factory reset” section).

3



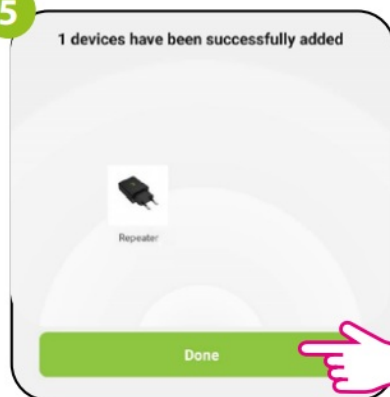
Enter the gateway interface.

4



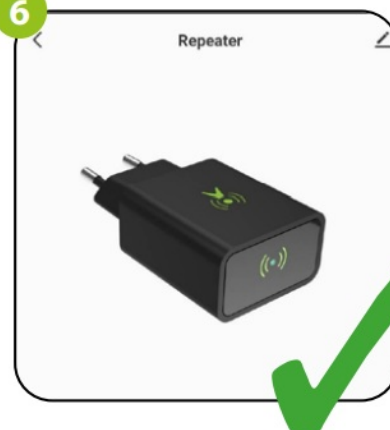
In „Zigbee devices list” go „Add devices”.

5



Wait until the application finds the device and click "Done".

6



The repeater is installed. Blue LED diode is steady and app shows main interface.

Factory Reset (entering the pairing mode)

Unplug and plug again the repeater three times at intervals of 3 seconds. The LED on the device will flash, which means repeater has been removed from the ZigBee network and gateway. After that repeater will enter pairing mode automatically. You can add it back to the ZigBee network (check „STEP 3” section).





Producer:

ENGO Controls sp. z o.o. sp. k.
4 Rolna St.
43-262 Kobielice
Poland
www.engocontrols.com

Documents / Resources

	<p>ENGO EREPEATER ZigBee Network Repeater [pdf] User Guide EREPEATER ZigBee Network Repeater, EREPEATER, ZigBee Network Repeater, Network Repeater, Repeater</p>
--	--

References

- [ENGO Controls - Sterowanie ogrzewaniem](#)
- [User Manual](#)

[Manuals+](#), [Privacy Policy](#)

This website is an independent publication and is neither affiliated with nor endorsed by any of the trademark owners. The "Bluetooth®" word mark and logos are registered trademarks owned by Bluetooth SIG, Inc. The "Wi-Fi®" word mark and logos are registered trademarks owned by the Wi-Fi Alliance. Any use of these marks on this website does not imply any affiliation with or endorsement.