



**ESIMPLE-230W
230V Simple
Dial Thermostat**



ENGGO CONTROLS ESIMPLE-230W 230V Simple Dial Thermostat Owner's Manual

[Home](#) » [ENGGO CONTROLS](#) » ENGGO CONTROLS ESIMPLE-230W 230V Simple Dial Thermostat Owner's Manual



Contents

- [1 ENGGO CONTROLS ESIMPLE-230W 230V Simple Dial Thermostat](#)
- [2 Product Usage Instructions](#)
- [3 FAQ](#)
- [4 Introduction](#)
- [5 Technical information](#)
- [6 Safety information](#)
- [7 Installation](#)
- [8 Package content](#)
- [9 Proper thermostat location](#)
- [10 Wiring diagrams](#)
- [11 Dimensions](#)
- [12 Wall mounting](#)
- [13 LED light indications](#)
- [14 Documents / Resources](#)
 - [14.1 References](#)
- [15 Related Posts](#)



ENGGO CONTROLS ESIMPLE-230W 230V Simple Dial Thermostat



Product Usage Instructions

Introduction:

The ESIMPLE-230W / ESIMPLE-230B is a surface-mounted, wired room thermostat designed for surface heating/cooling with high thermal inertia. It provides precise temperature control accuracy due to built-in algorithms.

Installation:

Installation should be done by a qualified person following the electrical standards. Ensure the thermostat is placed around 150 cm above the floor, away from heat sources, cold drafts, direct sunlight, or high-humidity areas.

Mounting:

1. Remove the knob and unscrew the screw under it.
2. Take off the front cover and connect the thermostat as per the connection diagram provided.
3. Attach it to the wall using the supplied mounting screws through the holes.

Additional Functions:

Additional functions can be controlled by switches located under the knob. Refer to the manual for details on these features.

FAQ

Q: Can this thermostat be used for both heating and cooling systems?

A: Yes, the thermostat has a HEAT/COOL switch hidden under the knob for easy switching between modes.

Q: What are the safety precautions to consider when using this thermostat?

A: Ensure compliance with national and EU regulations, keep the device dry, and use it indoors only. Refer to the manual for detailed safety instructions.

Introduction

ESIMPLE-230W / ESIMPLE-230B is a surface-mounted, wired room thermostat intended for surface heating/cooling, characterized by high thermal inertia. The room setpoint temperature is set with a knob. Thanks to the built-in algorithms, it offers much better temperature control accuracy than traditional mechanical thermostats.

Cechy produktu



simple thermostat with knob



TPI algorithm ideal for underfloor heating



HEAT / COOL switch hidden under the knob



two-color LED



surface mounting

Technical information

Power supply	230V AC 50Hz
Max load	3(1) A
Temperature control range	5 – 30°C
Control method	TPI or Hysteresis ($\pm 0.5^{\circ}\text{C}$)
Communication	Wired
Output signal	230V AC
IP protection class	IP30
Dimensions	80 x 80 x 26 mm

Safety information

Use in accordance with national and EU regulations. Use the device only as intended, keeping it in a dry condition. The product is for indoor use only. Please read the entire manual, before installation or use.

Product Compliance

This product complies with the following EU Directives: 2014/30/EU, 2014/35/EU, 2011/65/EU.

Installation

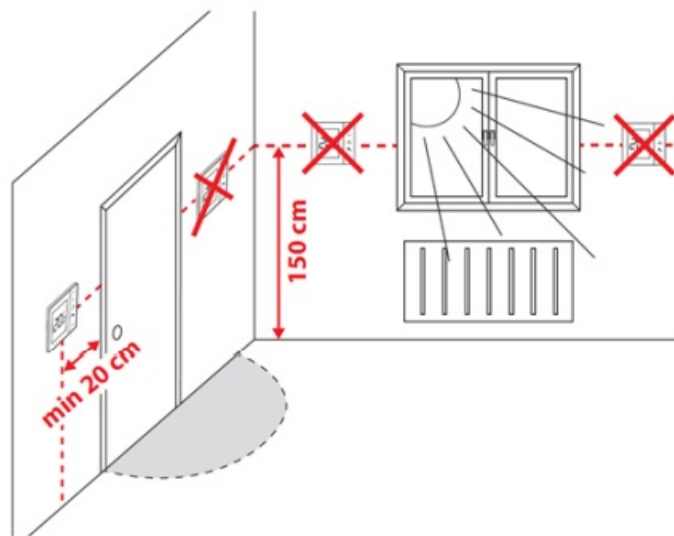
Installation must be performed by a qualified person with appropriate electrical qualifications, in accordance with the standards and regulations in force in a given country and in the EU. The manufacturer is not responsible for non-compliance with the instructions

WARNING:

For the entire installation, there may be additional protection requirements, which the installer is responsible for.

Package content

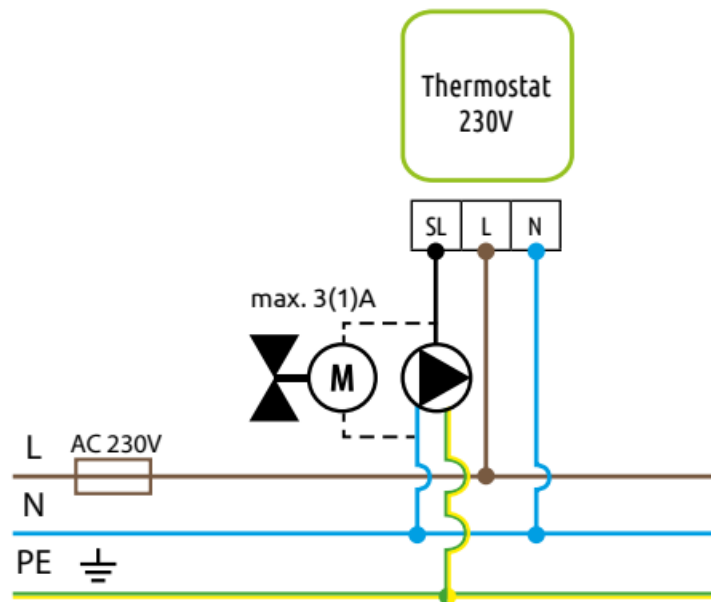
Proper thermostat location



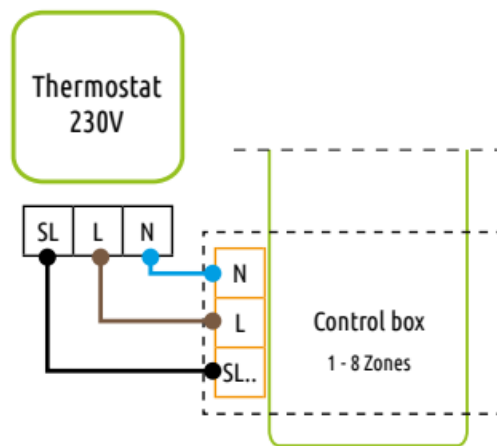
For the thermostat to work properly, it must be installed in a suitable place. Preferably approx. 150 cm above floor level, away from sources of heat or cold. In addition, the thermostat should not be installed behind curtains or other obstacles or in places with high humidity, as this will prevent an accurate measurement of the temperature in the room. It is not recommended to install the thermostat on an outside wall, in a draft or in a place where it will be exposed to direct sunlight.

Wiring diagrams

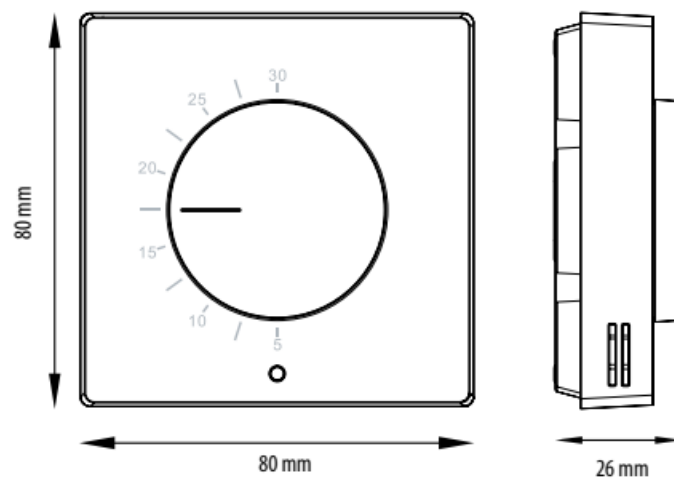
- a) Connection diagram for pump/actuator



- b) Connection diagrams for the control box



Dimensions



Wall mounting

Please note!

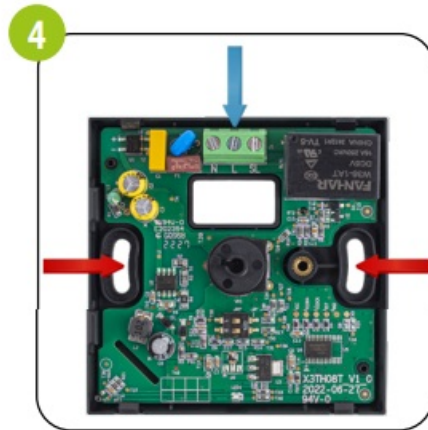
During the wire connections procedure, please make sure they are not connected to the 230V AC power supply.



Take off the knob.



Unscrew the screw placed under the knob.



Take off the front cover of the thermostat, as shown in the picture. Connect the thermostat as shown in the connection diagram above (see blue arrow). Then attach it to the wall using the supplied mounting screws through the holes provided (see red arrows).



Put the front cover back in place and screw both parts together. Insert the knob paying attention to the attachment method. Thermostat is ready to use. You can set the temperature using the knob.

Switches (sliders) for additional settings



Additional functions of the thermostats can be switched on or off by switches, which are located on the front cover, under the knob. Refer to the table below to understand what these features are:

Upper slider*	Function	Slider position
HEAT	Heating mode	
COOL	Cooling mode	
Bottom slider**	Function	Slider position
SPAN	Hysteresis ($\pm 0.5^{\circ}\text{C}$)	
TPI	TPI Algorithm	

Selecting the heating or cooling mode

The heating or cooling mode is based on the setting of the switches (sliders), which are located under the knob on the front cover. The position of the HEAT slider indicates the heating mode. When heating is required, a red LED lights up and the thermostat gives a voltage of 230V at the SL output. The position of the COOL slider indicates the cooling mode. When cooling is required, a blue LED lights up and the thermostat gives 230V at the SL output. When the thermostat is not in work mode, the LEDs are turned off.

Operation algorithm selection

The thermostat gives the possibility to choose the mode of controlling the room temperature by TPI algorithm or by hysteresis $\pm 0.5^{\circ}\text{C}$. The TPI algorithm is designed for underfloor heating (for heating systems with high inertia) – to precisely maintain the room temperature.

LED light indications

The status of the thermostat is determined by the LED, illuminating in the following colors:



- red



- blue

A detailed explanation of the meaning of the LED lights can be found in the table below:

LED DIODE	EXPLANATION
Solid red	Thermostat sends a signal for heating (the thermostat gives 230V at the SL output).
Solid blue	Thermostat sends a signal for cooling (the thermostat gives 230V at the SL output).
Off	Temperature has been reached or no power supply.

Producer:

- Engo Controls sp z o.o. sp.k.
- 4 Rolna St.
- 43-262 Kobielice
- Poland
- www.engocontrols.com



Documents / Resources



[ENGO CONTROLS ESIMPLE-230W 230V Simple Dial Thermostat](#) [pdf] Owner's Manual
ESIMPLE-230W 230V Simple Dial Thermostat, ESIMPLE-230W, 230V Simple Dial Thermostat,
Simple Dial Thermostat, Dial Thermostat, Thermostat

References

- [ENGO Controls - Sterowanie ogrzewaniem](#)
- [User Manual](#)

Manuals+. [Privacy Policy](#)

This website is an independent publication and is neither affiliated with nor endorsed by any of the trademark owners. The "Bluetooth®" word mark and logos are registered trademarks owned by Bluetooth SIG, Inc. The "Wi-Fi®" word mark and logos are registered trademarks owned by the Wi-Fi Alliance. Any use of these marks on this website does not imply any affiliation with or endorsement.