



ENG0 CONTROLS EREPEATERZB ZigBee Network Repeater Instruction Manual

[Home](#) » [ENG0 CONTROLS](#) » ENG0 CONTROLS EREPEATERZB ZigBee Network Repeater Instruction Manual



Contents

- 1 ZigBee network repeater
- 2 EREPEATERZB
 - 2.1 Quick Guide
 - 2.2 INTRODUCTION:
 - 2.3 Technical specification:
 - 2.4 LED diode indications
 - 2.5 Installation of the repeater in the app
 - 2.6 Factory Reset (entering the pairing mode)
- 3 Documents / Resources
 - 3.1 References
- 4 Related Posts

ZigBee network repeater





EREPEATERZB

Quick Guide

Ver. 1

Release date: III 2023

INTRODUCTION:

Repeater increases wireless network signal range for all Enigo devices which works over ZigBee 3.0 protocol. It helps to improve radio signal range in places, where wireless network is disturbed by distance or other obstacles (concrete walls, reinforced ceilings, etc.). This device cannot operate standalone. In order to use it EGATEZB

ZigBee 3.0 gateway is needed.



WARNING:

This product must be used with EGATEZB ZigBee 3.0 gateway (purchased separately).

PRODUCT COMPLIANCE:

This product complies with the following EU Directives:
2014/30/EU, 2014/35/EU, 2014/53/EU, 2011/65/EU.

SAFETY INFORMATION:

Use in accordance with national and EU regulations. Use the device only as intended, keeping it in a dry condition. The product is for indoor use only. Please read the entire manual, before installation or use.



WARNING:

For the entire installation, there may be additional protection requirements, which the installer is responsible for.

Technical specification:

Power supply	230 V AC 50 Hz
Communication	Zig Bee 3.0 2,4 GHz
Dimensions [mm]	40 x 24 x 82

LED diode indications

	EXPLANATION
LED diode flashes blue	The device is in pairing mode with ZigBee network (when device didn't previously added to the ZigBee 3.0 network, or after recovery factory reset)
LED diode lights up blue	The device has been added to the ZigBee 3.0 network
LED diode is off	Repeater is not connected to power supply 230V

Installation of the repeater in the app

Make sure your router is within range of your smartphone. Make sure you are connected to the Internet. This will reduce the pairing time of the device.

STEP 1 – DOWNLOAD ENGO SMART APP

Download the ENGO Smart app from Google Play or Apple App Store and install it on your smartphone.





STEP 2 – REGISTER THE NEW ACCOUNT

To register a new account, please follow the steps below:



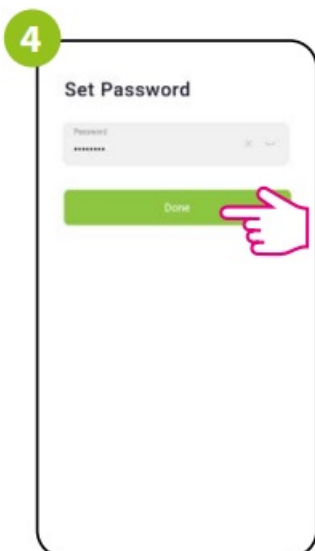
To register a new account, please follow the steps below:



Then set the login password.



Enter the verification code received in the email. Remember that you only have 60 seconds to enter the code!



Enter your e-mail address to which the verification code will be sent.

STEP 3 – INSTALLATION OF THE ZigBee 3.0 REPEATER IN THE APP

After installing the app and creating an account:



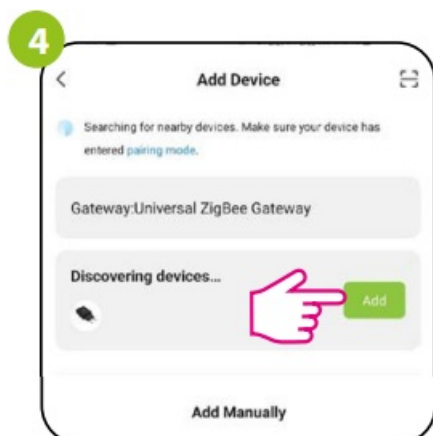
Make sure you have added ZigBee gateway to app



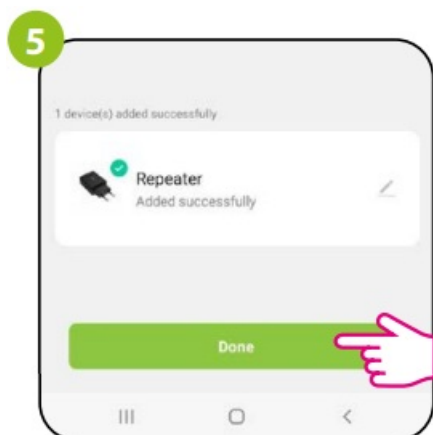
Make sure the repeater is connected to power supply. The blue LED should flash. If not, perform factory reset (check „Factory reset” section).



In the app, select: „Add Device”.



Once the ZigBee gateway will search correctly the repeater click „Add”.



Name device and click „Done”.



The repeater is installed. Blue LED diode is steady and app shows main interface.

Factory Reset (entering the pairing mode)

Unplug and plug again the repeater three times at intervals of 3 seconds. The LED on the device will flash, which means repeater has been removed from the ZigBee network and gateway. After that repeater will enter pairing mode automatically. You can add it back to the ZigBee network (check „STEP 3” section).



Producer:

Engo Controls S.C.
43-200 Pszczyna
3E Górnośląska St.
Poland

Distributor:

QL CONTROLS Sp z o.o. Sp. k.
43-262 Kobielice
4 Rolna St.
Poland

www.engocontrols.com

Documents / Resources



[ENGO CONTROLS EREPEATERZB ZigBee Network Repeater](#) [pdf] Instruction Manual
EREPEATERZB ZigBee Network Repeater, EREPEATERZB, ZigBee Network Repeater, Netwo
rk Repeater, Repeater

References

- [ENG0 Controls - Sterowanie ogrzewaniem](#)