

**ENG
CONTROLS**
**EREL-16ZB Smart
Relay ZigBee**



ENG CONTROLS EREL-16ZB Smart Relay ZigBee User Guide

[Home](#) » [ENG
CONTROLS](#) » ENGO CONTROLS EREL-16ZB Smart Relay ZigBee User Guide 

Contents

- [1 ENGO CONTROLS EREL-16ZB Smart Relay ZigBee](#)
- [2 Product Usage Instructions](#)
- [3 FAQ](#)
- [4 Technical specifications](#)
- [5 Introduction](#)
- [6 Input/Output](#)
- [7 LED diode indications](#)
- [8 Button functions](#)
- [9 Connection description](#)
- [10 Installation thermostat in the app](#)
- [11 Documents / Resources](#)
 - [11.1 References](#)
- [12 Related Posts](#)



**ENG
CONTROLS EREL-16ZB Smart Relay ZigBee**



Technical Specifications

- **Power supply:** 230V AC 50Hz
- **Max load:** 16(5)A
- **Communication:** ZigBee 3.0 2.4GHz
- **Output/Input:** COM/NO (Volt-free) Volt-free contact input or temperature sensor EFS300
- **Dimension:** 46 x 46 x 24 mm

Product Usage Instructions

Introduction

ATTENTION: This product must be used with a ZigBee gateway (purchased separately).

Product Compliance

This product complies with the following EU Directives: 2014/30/EU, 2014/35/EU, 2014/53/EU, and 2011/65/EU.

Safety Information

Use by national and EU regulations. Keep the device dry and for indoor use only. Installation must be done by a qualified person.

Installation

Installation must be performed by a qualified person with appropriate electrical qualifications, following national and EU regulations. Additional protection requirements may apply.

Input/Output

1. Power supply 230V AC

2. Volt free output
3. Volt-free input or input for connecting the EFS300 temperature sensor
4. Function button
5. LED indicating the status of the module.

EXPLANATION

- **LED flashes quickly on red:** Pairing mode with ZigBee network
- **LED flashes slowly on red:** Binding mode
- **LED diode lights up green:** The relay of the module has been turned ON

Button Functions

- **Press 1 time:** Control of the module's relay (ON/OFF)
- **Press quickly 5 times:** Enables binding process
- **Press and hold approx. 8 seconds** until the LED will start flashing red: Module reset

Connection Description

- **a)** Connection diagram for heating source
- **b)** Connection diagram for pump/actuator
- **c)** Connection diagram for lighting

Installation of Thermostat in the App

Ensure your router is within range of your smartphone and that you are connected to the Internet to reduce pairing time.

FAQ

Q: Do I need a ZigBee gateway for this product?

A: Yes, this product must be used with a ZigBee gateway purchased separately.

Technical specifications

Power supply	230V AC 50Hz
Max load	16(5)A
Communication	ZigBee 3.0 2,4GHz
Output	COM / NO (Volt-free)
Input	Volt-free contact input or temperature sensor EFS300
Sensor temperature range	-40°C to 120°C
Dimension [mm]	46 x 46 x 24

Introduction

- The ZigBee relay can wirelessly control selected devices in the smart home: heat source, circulation pump, fans, lighting, gates, electric heaters, etc. It has the option to connect an EFS300 sensor, which allows to make smart rules and automations based on temperature readings. Allows you to build any scenario in your smart home. It is housed in an installation box, which makes it possible to mount it under a light switch or under a mains socket. DIN rail mounting is also possible using the bracket provided.
- A ZigBee internet gateway is required for its correct operation. It can also work with the voice assistants Amazon Alexa and Google Home.
- **ATTENTION:** The sensor temperature range is from -40°C to 120°C.
- **ATTENTION:** This product must be used together with ZigBee gateway (purchased separately).

Product Compliance

- This product complies with the following EU Directives: 2014/30/EU, 2014/35/EU, 2014/53/EU i 2011/65/EU.

Safety Information:

- Use in accordance with national and EU regulations. Use the device only as intended, keeping it in a dry condition. The product is for indoor use only. Installation must be carried out by a qualified person in accordance with national and EU regulations.

Installation:



- Installation must be performed by a qualified person with appropriate electrical qualifications, in accordance with the standards and regulations in force in a given country and in the EU.
- The manufacturer is not responsible for non-compliance with the instructions.
- **ATTENTION:** For the entire installation, there may be additional protection requirements, which the installer is responsible for.

Input/Output





1. Power supply 230V AC
2. Volt free output
3. Volt free input or input for connecting the EFS300 temperature sensor
4. Function button
5. LED diode indicating the status of the module.

LED diode indications

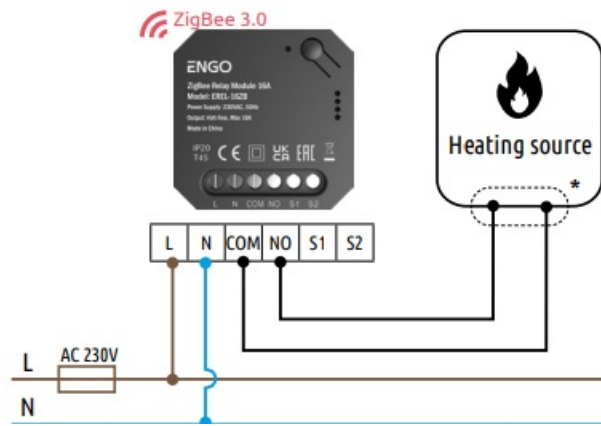
	EXPLANATION
LED diode flashes quickly on red 	The device is in pairing mode with the ZigBee network (when the device does not has been previously added to the ZigBee network , or after restoring factory settings)
LED diode flashes slowly on red 	The device is in binding mode (when the device has been previously added to ZigBee network)
LED diode lights up green	Relay of the module has been turned ON

Button functions

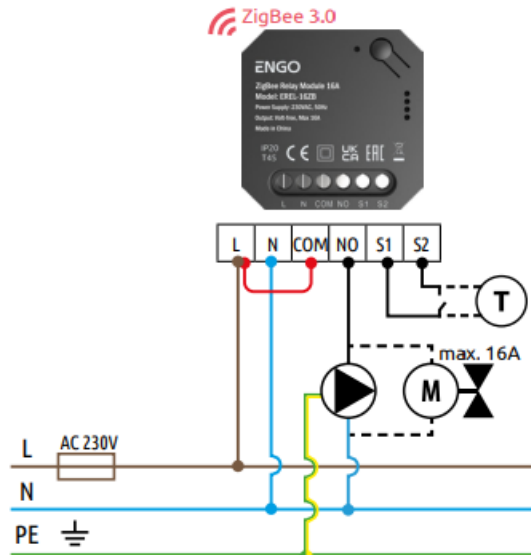
	EXPLANATION
Press 1 time	Control of the modules relay (ON/OFF)
Press quickly 5 times 	Enables binding process (to link module with thermostat)
Press and hold approx. 8 seconds until the LED will start flashing red 	Module reset (module will be removed from the ZigBee network and automatically will go into pairing mode)

Connection description

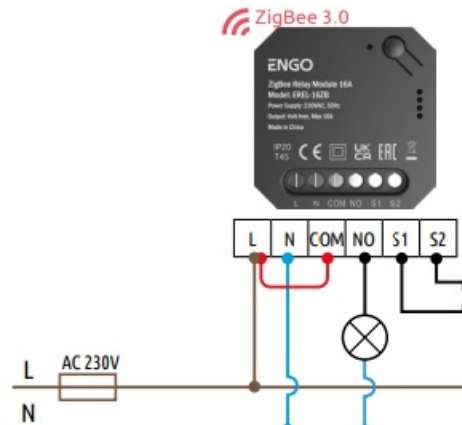
- a) Connection diagram for heating source



- b) Connection diagram for pump / actuator



- c) Connection diagram for lighting

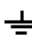


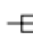
Legend:



Boiler connection* -Boiler's contacts for ON/OFF thermostat (according to the boiler's instructions)

L, N 230V AC power supply


PE  Ground (electricity)


 Fuse


COM, NO Voltage-free output

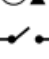
S1/S2 Voltage-free input or input for connecting the EFS300 temperature sensor

 Pump

 Temperature sensor

 Light (bulb)

 Valve actuator

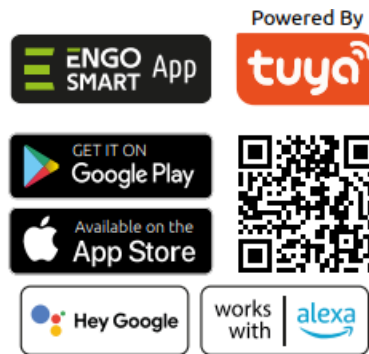
 External NO contact

Installation thermostat in the app

Make sure your router is within range of your smartphone. Make sure you are connected to the Internet. This will reduce the pairing time of the device.

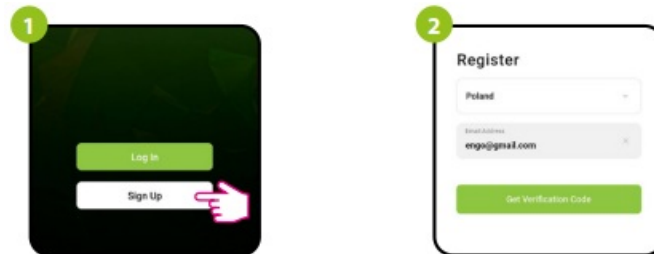
1. STEP 1 – DOWNLOAD ENGO SMART APP

- Download the ENGO Smart app from Google Play or Apple App Store and install it on your smartphone.

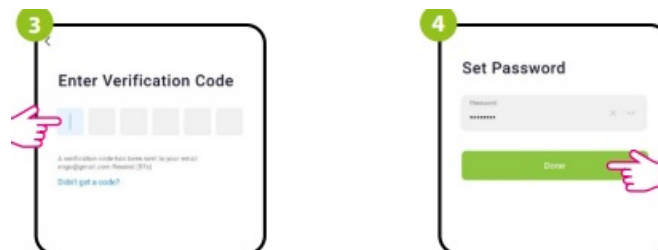


2. STEP 2 – REGISTER THE NEW ACCOUNT

To register a new account, please follow the steps below.



- Click „Register” to create new account.
- Enter your e-mail address to which the verification code will be sent.



- Enter the verification code received in the email. Remember that you only have 60 seconds to enter the code!!
- Then set the login password.

STEP 3 – CONNECT THE RELAY TO ZigBee network

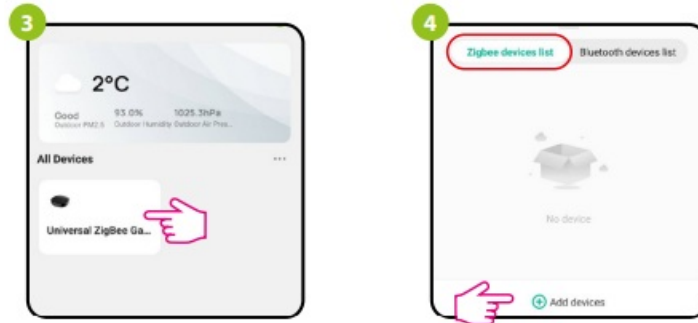
After installing the application and creating an account, follow these steps.

- Make sure ZigBee gateway has been added to the Engo Smart app.
- Make sure the relay is connected to the power supply. Red LED should flash quickly. If not, hold down the button for about 8 seconds. The relay will enter pairing mode.



- Enter the gateway interface.

4. In „Zigbee devices list” go Add devices.



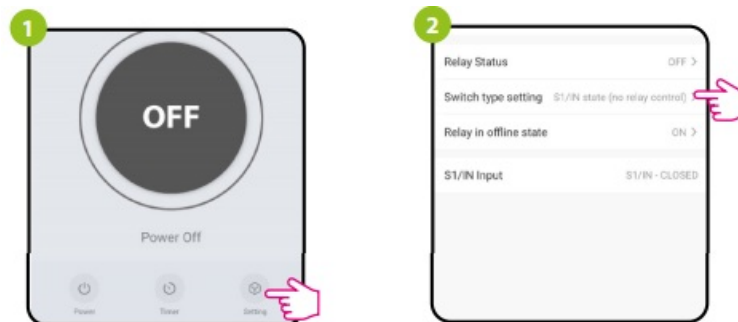
5. Wait until the application finds the device and click ”Done”.

6. The relay has been installed and displays the main interface.



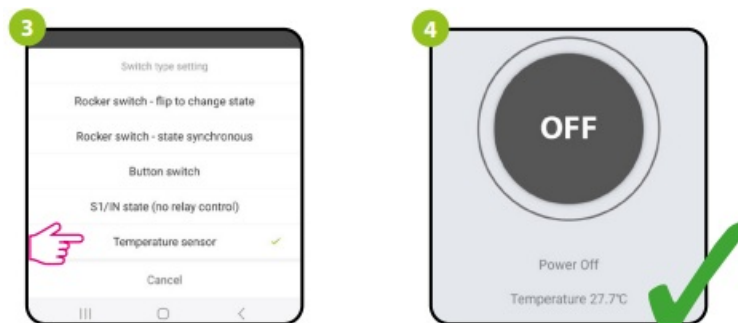
External temperature sensor connection

- Contacts S1/S2 can be used to connect the EFS300 temperature sensor.
- To activate the sensor, follow the steps below.



1. Make sure the sensor is connected. Then go to „Settings”.

2. Click „Switch type setting”.

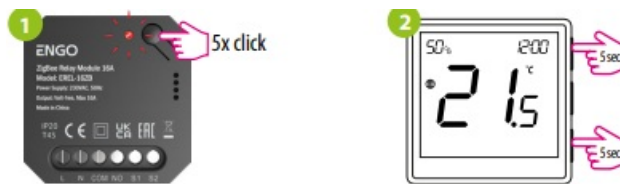


3. Select „Temperature sensor”.

4. The measured temperature value appeared on the relay main screen.

BINDING thermostat with the module/relay

Make sure that the relay and thermostat are in the same ZigBee network (they are added to the same gateway).



1. To properly bind thermostat with the relay first click quickly the button on the device 5 times.
 - Red LED diode will start flashing slowly, which means the device will enable binding mode.
2. On the EONE thermostat, hold ▲ and ▼ buttons until the „bind” message appears.



3. Release the keys, binding function (process of linking thermostat with control box) is active.
4. The „binding” process takes up to 300 seconds.



5. After successful binding operation „End” message will be displayed. LED on the module will stop flashing.
6. Both devices have been successfully linked. Thermostat displays the main screen, icon " (📶) " appeared on the screen indicating connection with the receiver.

- **ATTENTION:** If the binding process fails, it must be repeated taking into account the distances between devices, obstacles and local radio signal interferences.

Remember:

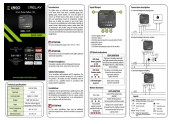
- Radio range can be increased by Engo ZigBee repeaters.
- **ATTENTION:** When the thermostat is binded with the module, the relay will turn off after 50 minutes, if the communication between the devices is lost.

Factory reset

- To reset the device, press and hold the function button for approx. 8 seconds until the LED flashes red. The relay will be removed from the ZigBee network and gateway, then goes into pairing mode.
- Now it's possible to add the relay again (see STEP 3 – CONNECT THE RELAY TO ZigBee network).



Documents / Resources



[ENGO CONTROLS EREL-16ZB Smart Relay ZigBee](#) [pdf] User Guide

EREL-16ZB, EREL-16ZB-QG, EREL-16ZB Smart Relay ZigBee, EREL-16ZB, Smart Relay ZigBee, Relay ZigBee, ZigBee

References

- [ENGO Controls - Sterowanie ogrzewaniem](#)
- [User Manual](#)

[Manuals+](#), [Privacy Policy](#)

This website is an independent publication and is neither affiliated with nor endorsed by any of the trademark owners. The "Bluetooth®" word mark and logos are registered trademarks owned by Bluetooth SIG, Inc. The "Wi-Fi®" word mark and logos are registered trademarks owned by the Wi-Fi Alliance. Any use of these marks on this website does not imply any affiliation with or endorsement.