



EPIR ZigBee Motion Sensor



ENGO CONTROLS EPIR ZigBee Motion Sensor User Guide

[Home](#) » [ENGO CONTROLS](#) » ENGO CONTROLS EPIR ZigBee Motion Sensor User Guide 

Contents

- [1 ENGO CONTROLS EPIR ZigBee Motion Sensor](#)
- [2 Product Information](#)
- [3 FAQ](#)
- [4 Device description](#)
- [5 Technical specifications](#)
- [6 Introduction](#)
- [7 Product Features](#)
- [8 Product Compliance](#)
- [9 Installation sensor in the app](#)
- [10 Documents / Resources](#)
 - [10.1 References](#)



ENGO CONTROLS EPIR ZigBee Motion Sensor



Technical Specifications

- **Power supply:** CR2450
- **Communication:** ZigBee 3.0, 2.4GHz
- **Dimensions:** 84 x 34 mm

Product Information

The EPIR ZigBee Motion Sensor is a battery-powered device designed for detecting movement and enabling automation of various tasks when paired with the ENGO Smart app. It works on the ZigBee 3.0 communication standard and requires an internet gateway for installation.

Product Features

- Works with ENGO Smart (Compatible with Tuya App)
- ZigBee 3.0 communication standard
- Motion detection capabilities

Safety Information

Use the EPIR Motion Sensor in accordance with national and EU regulations. Keep the device dry and for indoor use only.

Installation must be done by a qualified person following regulations.

Installation Instructions

1. Ensure your router is within range of your smartphone and you are connected to the Internet.
2. **Step 1 – Download ENGO Smart App:** Download and install the ENGO Smart app from Google Play or Apple App Store.

3. **Step 2 – Register New Account:** Follow the steps to create a new account in the app.

4. **Step 3 – Connect Sensor to ZigBee Network:**

1. Make sure the ZigBee gateway is added to the ENGO Smart app.
2. Press and hold the button for about 10 seconds until the redLED flashes.
3. Enter your email address to receive a verification code.
4. In the app, go to “Zigbee devices list” and add the device by entering the verification code.
5. Set the login password and wait for the app to find the device.

FAQ

Q: What do I do if the sensor does not pair with the app?

A: Make sure your smartphone is connected to the internet and within range of the router. Follow the pairing instructions carefully, ensuring the gateway is properly added to the app.

Q: Can the sensor be used outdoors?

A: No, the EPIR Motion Sensor is designed for indoor use only.

Device description



1. Function button

Pressing for 10 seconds activates pairing mode and factory reset

2. Sensor area

3. LED diode

Flashing red – active pairing mode with the application Single red flash – flood detection

4. Stand

The sensor can stand alone or be mounted on a stand

Technical specifications

Power supply	CR2450
Communication	ZigBee 3.0, 2.4GHz
Dimensions [mm]	84 x Ø34

Introduction

The battery-powered motion sensor is not only a tool for detecting movement, but when combined with the app, it enables the automation of many everyday tasks. Detection of movement can trigger a multiple actions, such as switching ON/OFF lights, starting the hot water pump or initiating advanced scenarios with devices on the Zigbee 3.0 network. The internet gateway is required for installation in the app.

Product Features



Works with ENGO Smart (Compatible with Tuya App)



ZigBee 3.0 communication standard



Motion detection



Detection angle 150°, detection distance 7m

Product Compliance

This product complies with the following EU Directives: 2014/53/EU, 2011/65/EU.

Safety information

Use in accordance with national and EU regulations. Use the device only as intended, keeping it in a dry condition. The product is for indoor use only. Installation must be carried out by a qualified person in accordance with national and EU regulations.

Installation

Installation must be performed by a qualified person with appropriate electrical qualifications, in accordance with the standards and regulations in force in a given country and in the EU. The manufacturer is not responsible for non-compliance with the in-structions.

ATTENTION:

For the entire installation, there may be additional protection requirements, which the installer is responsible for.

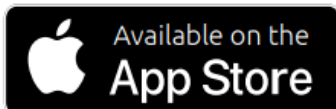
Installation sensor in the app

Make sure your router is within range of your smartphone. Make sure you are connected to the Internet. This will reduce the pairing time of the device.

STEP 1 – DOWNLOAD ENGO SMART APP

Download the ENGO Smart app from Google Play or Apple App Store and install it on your smartphone.

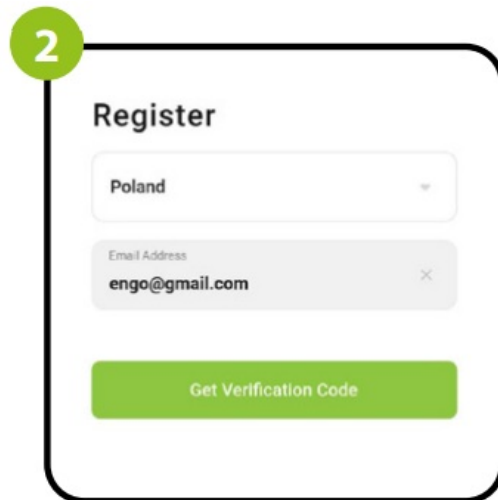
Powered By



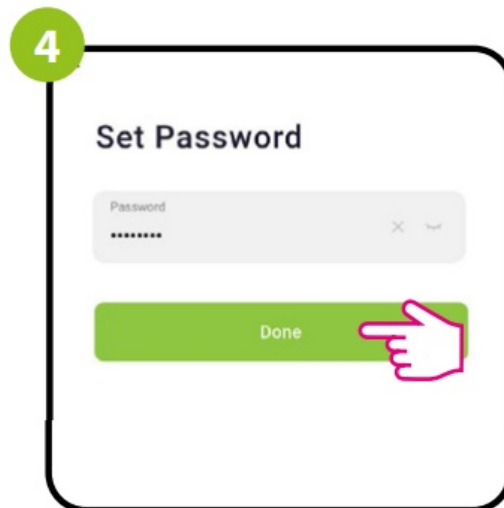
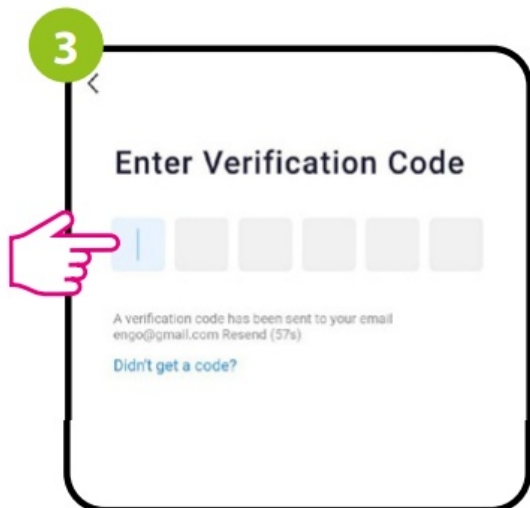
STEP 2 – REGISTER THE NEW ACCOUNT

To register a new account, please follow the steps below:

1. Click „Register” to create new account.
2. Enter your e-mail address to which the verification code will be sent.



3. Enter the verification code received in the email. Remember that you only have 60 seconds to enter the code!!
4. Then set the login password.



STEP 3 – CONNECT THE SENSOR TO ZigBee network

After installing the application and creating an account, follow these steps:

1. Make sure ZigBee gateway has been added to the Engo Smart app.

2. Press and hold the button for about 10 seconds until the red LED starts flashing. The sensor will enter pairing mode.

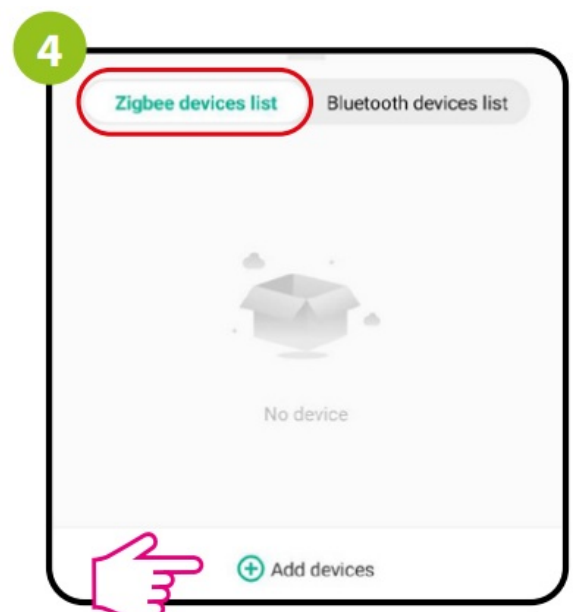
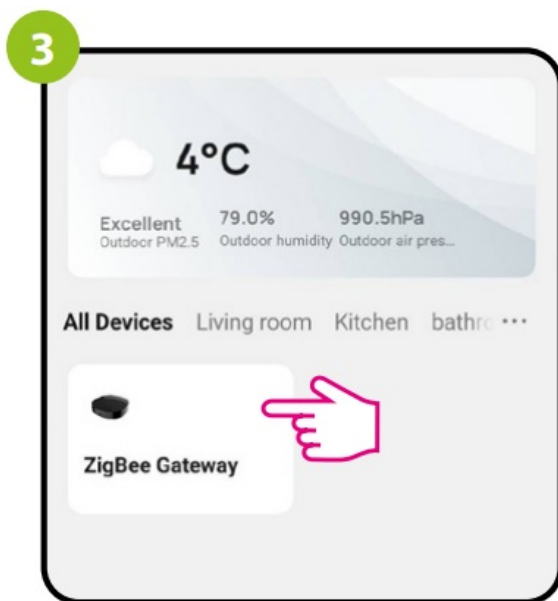


Make sure ZigBee gateway has been added to the Engo Smart app.

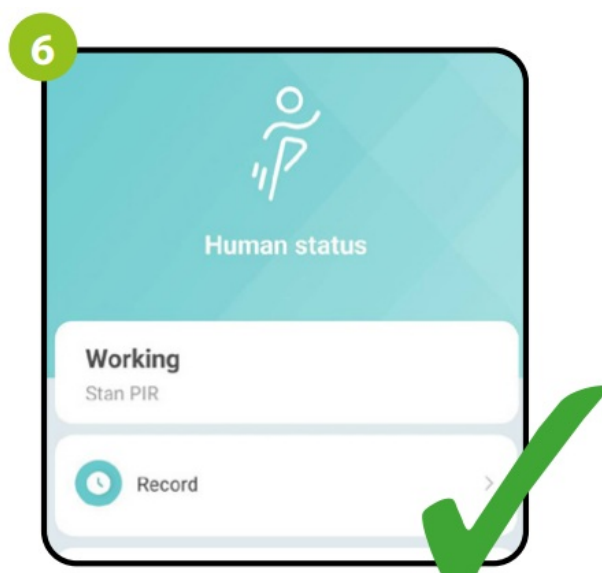
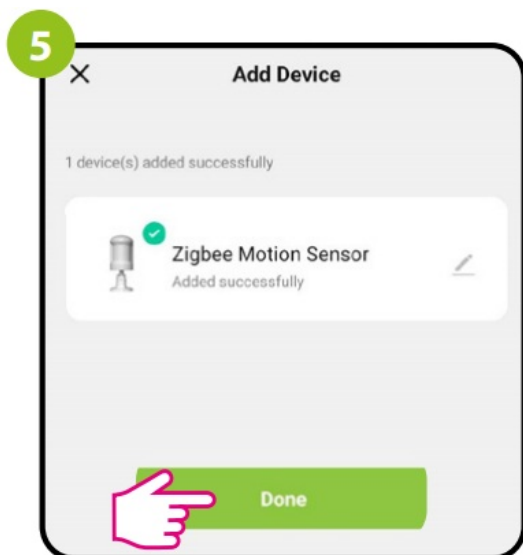
Press and hold the button for about 10 seconds until the red LED starts flashing.

The sensor will enter pairing mode.

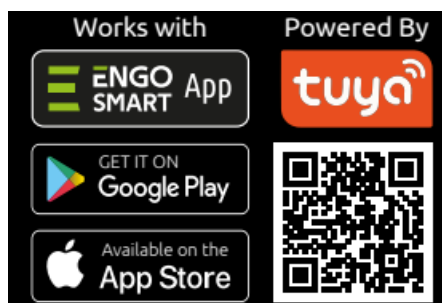
3. Enter the gateway interface.
4. In „Zigbee devices list” go „Add devices”.



5. Wait until the application finds the device and click "Done".
6. The sensor has been installed and displays the main interface.



MORE INFORMATION



Ver. 1.0
Release date: VIII 2024
Soft: V1.0.6



Producer:

Engo Controls sp. z o.o. sp. k.
43-262 Kobielice
Rolna 4 St.
Poland

www.engocontrols.com

Documents / Resources

	ENGO CONTROLS EPIR ZigBee Motion Sensor [pdf] User Guide EPIR ZigBee Motion Sensor, EPIR, ZigBee Motion Sensor, Motion Sensor, Sensor
--	--

References

- [ENGO Controls - Sterowanie ogrzewaniem](#)
- [User Manual](#)

Manuals+. Privacy Policy

This website is an independent publication and is neither affiliated with nor endorsed by any of the trademark owners. The "Bluetooth®" word mark and logos are registered trademarks owned by Bluetooth SIG, Inc. The "Wi-Fi®" word mark and logos are registered trademarks owned by the Wi-Fi Alliance. Any use of these marks on this website does not imply any affiliation with or endorsement.