

## ENGGO CONTROLS EONE-BATW, EONE-BATB Internet Controlled Thermostat User Guide

[Home](#) » [ENGGO CONTROLS](#) » ENGGO CONTROLS EONE-BATW, EONE-BATB Internet Controlled Thermostat User Guide 

### Contents

- [1 ENGGO CONTROLS EONE-BATW, EONE-BATB Internet Controlled Thermostat](#)
- [2 Product Usage Instructions](#)
- [3 SAFETY INFORMATION](#)
- [4 Product advantages](#)
- [5 Wireless communication diagram](#)
- [6 INTRODUCTION](#)
- [7 Technical Information](#)
- [8 LCD Icon Description + Button Description](#)
- [9 Button description](#)
- [10 Installer settings](#)
- [11 Installer parameters](#)
- [12 Documents / Resources](#)
  - [12.1 References](#)
- [13 Related Posts](#)



**ENGGO CONTROLS EONE-BATW, EONE-BATB Internet Controlled Thermostat**



## Specifications

- Product: Internet controlled thermostat, ZigBee
- Model: EONE-BATW
- Release Date: VII 2024
- ZigBee Soft Version: v1.0.12
- MCU Version: v2.0.9
- Producer: Engo Controls sp z o.o. sp. k.

## Product Usage Instructions

### Safety Information

Use in accordance with national and EU regulations. Keep the device dry and for indoor use only. Read the manual before installation or use.

### Product Advantages

- Built-in Li-Ion 3.7V Battery
- Communication in ZigBee 3.0 standard
- Multiple functions available from ENGO Smart / Tuya Smart application
- S1-S2 Input for additional sensor
- ENGO ENGO binding function for device connection

### Connection Description

EONE-BATW/B connects via ZigBee 3.0 to Gateway EGATEZB and ECB62-ZB Control box. Additional products like EMOD-ZB Module or EREL-12ZB Relay are sold separately.

## Installation Instructions

1. Ensure your router is within range of your smartphone and connected to the internet.
2. **Step 1 – Download ENGO Smart App:** Download the app from Google Play or Apple App Store and install it on your smartphone.

## FAQ

- **Q: Do I need a ZigBee gateway for this thermostat?**

A: Yes, this product must be used with a ZigBee gateway which needs to be purchased separately.

- **Q: What is the power supply for this thermostat?**

A: The thermostat has a built-in Li-Ion 3.7V Battery for power.

- **Q: How do I change the temperature settings on the thermostat?**

A: Use the temperature settings icon on the thermostat display and follow the provided button descriptions for navigation.

### Internet controlled thermostat, ZigBee

Ver. 7.4  
Release date: VII 2024  
Soft:  
ZigBee: v1.0.12  
MCU: v2.0.9

Works with

Powered By

ENGO SMART App

tuya

GET IT ON  
Google Play

Available on the  
App Store

QR code

UK CA CE EAC

Hey Google

works with alexa

**Producer:**

Engo Controls sp z o.o. sp. k.  
Rolna 4  
43-262 Kobielice  
Poland [www.engocontrols.com](http://www.engocontrols.com)

**Product Compliance**

This product complies with the following EU Directives: 2014/30/EU, 2014/35/EU, 2014/53/EU, 2011/65/EU

**SAFETY INFORMATION**

Use in accordance with national and EU regulations. Use the device only as intended, keeping it in a dry condition. The product is for indoor use only. Please read the entire manual, before installation or use.

**WARNING:**

This product must be used with a ZigBee gateway (purchased separately). Thermostat programming is done by ENGO Smart app.

**Product advantages**



- Built-in Li-Ion 3,7V Battery



- **ZIGBEE 3.0** Communication in the ZigBee 3.0 standard



- A multitude of functions available from ENGO Smart / Tuya Smart application

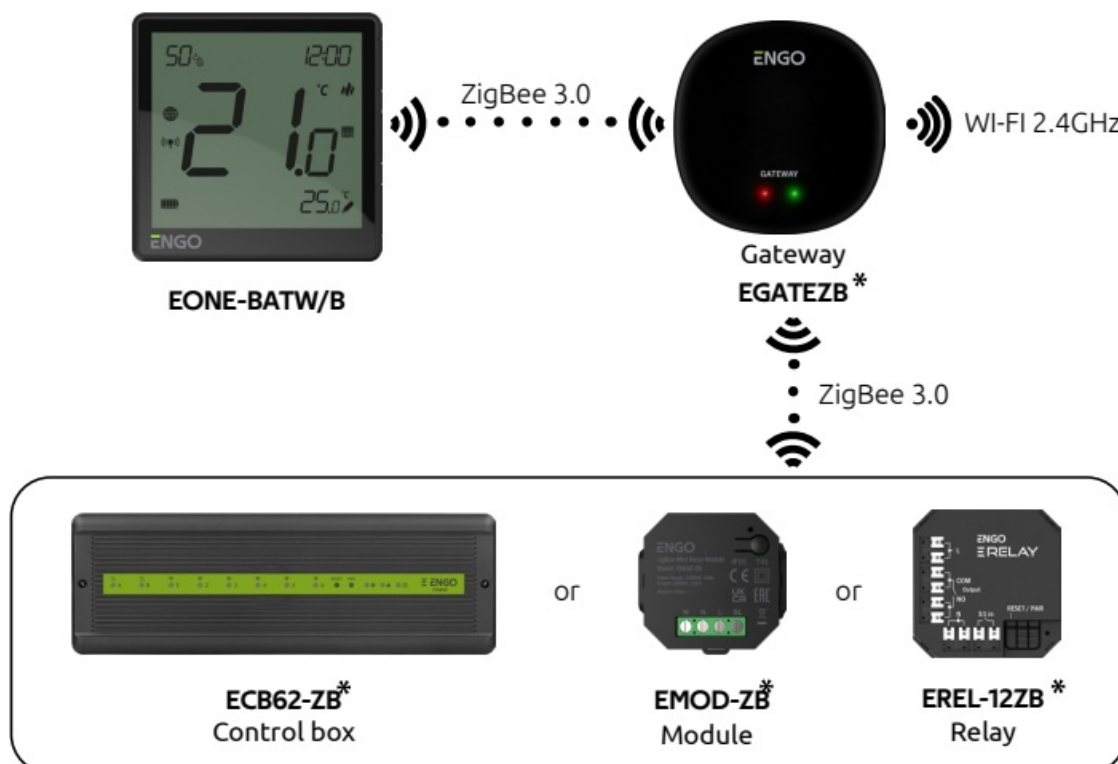


- **NTC** S1-S2 Input for additional sensor

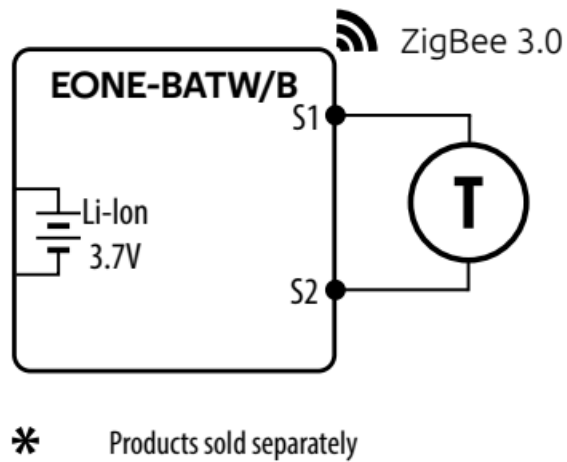


- **BINDING** ENGO binding function (devices connection in Online and Offline mode)

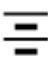



## Wireless communication diagram



## Connection description



### Legend:

-  Battery powered
-  Temperature sensor
- **S1, S2** Thermostat input for ext. temperature sensor
-  Connection with ZigBee 3.0 network
-  Connection with WiFi 2.4GHz network

### INTRODUCTION

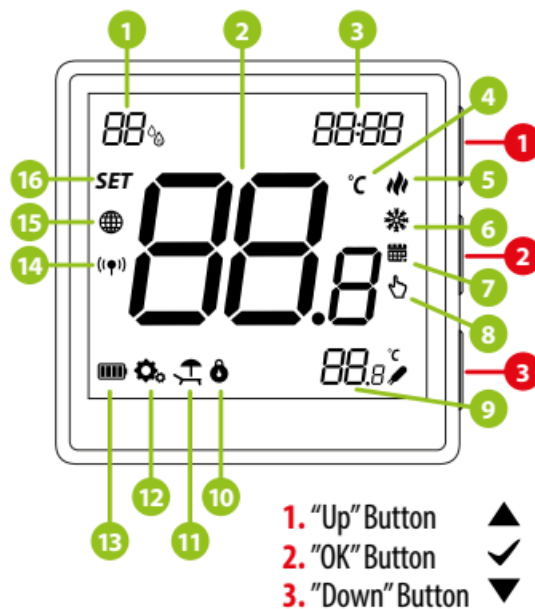
EONE-BAT is a surface-mounted room thermostat which works over ZigBee technology. It has a built-in humidity sensor and a minimum/maximum setpoint temperature limiting function. The EONE-BAT has the ability to work in heating or cooling modes. The unique feature of this thermostat is the possibility of wireless control over ENGO binding function. In order to have the ability to control wirelessly, EONE-BAT needs to be used with ENGO Smart / TUYA Smart mobile application and EGATE-ZB internet gateway (sold separately). „ENGO binding” function provides wireless and direct connection to the receivers (e.g. ECB62-ZB control box, EMOD-ZB module or EREL-12ZB relay) over the gateway. After adding to the mobile app, thermostat offer more functions, e.g. push notifications or possibility of programming time schedules.

### Technical Information

Power supply	Built-in Li-Ion 3,7V Battery
Charging connector	USB type C, 5V DC
Temperature range	5,0°C – 45,0°C
Display temperature accuracy	0,5°C
Control algorithm	TPI or Histeresis (from $\pm 0,1^{\circ}\text{C}$ to $\pm 2^{\circ}\text{C}$ )
Communication	ZigBee 3.0 2,4GHz
S1/S2 multifunctional input	Floor temp sensor, external air sensor, occupancy sensor
IP protection class	IP30
Dimension [mm]	90 x 90 x 14 mm

## LCD Icon Description + Button Description

1. Current humidity reading
2. Current/Setpoint temperature
3. Clock
4. Temperature unit
5. Heating indicator (icon is animating when there is heating demand)
6. Cooling indicator (icon is animating when there is cooling demand)
7. Schedule mode icon
8. Temporary override mode
9. External/Floor or Occupancy sensor
10. Button lock
11. Holiday mode
12. Settings icon
13. Battery indicator
14. Receiver binding indicator
15. ZigBee network connection indicator
16. Settings icon / temperature settings



## Button description

▲	Change the parameter value up
▼	Change the parameter value down
✓	Manual/Schedule mode - short button press (Online mode)
	Enter the installer parameters- hold 3 seconds
	Turn OFF/ON thermostat - hold 5 seconds
▲ + ▼	Enter the pairing mode - hold 5 seconds
	Enter binding mode - hold 5 seconds
	Factory reset - hold until the FA message appears
▲ + ✓	Lock/Unlock thermostat keys - hold 3 seconds
▼ + ✓	Heating/Cooling mode change - hold 3seconds

## Installation thermostat in the app

Make sure your router is within range of your smartphone. Make sure you are connected to the Internet. This will reduce the pairing time of the device.

### STEP 1 – DOWNLOAD ENGO SMART APP

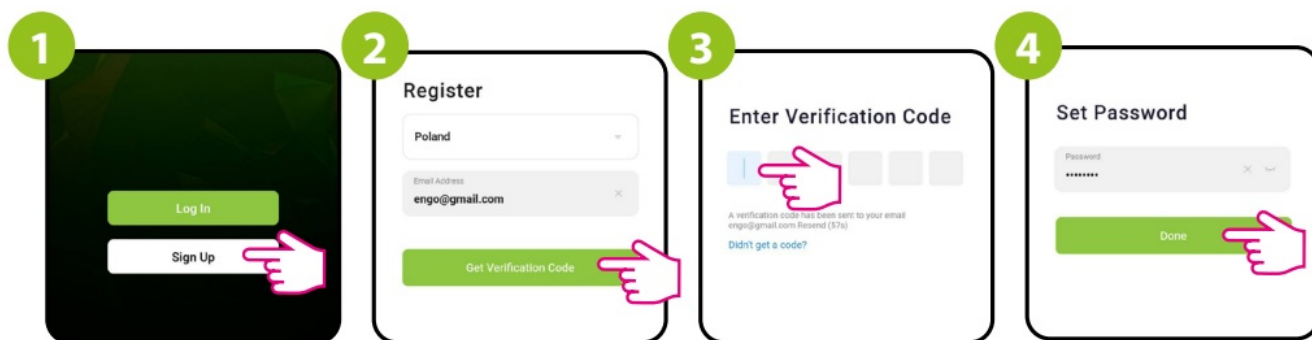
Download the ENGO Smart app from Google Play or Apple App Store and install it on your smartphone.



### STEP 2 – REGISTER THE NEW ACCOUNT

To register a new account, please follow the steps below:

1. Click „Register” to create new account.
2. Enter your e-mail address to which the verification code will be sent.
3. Enter the verification code received in the email. Remember that you only have 60 seconds to enter the code!!
4. Then set the login password.

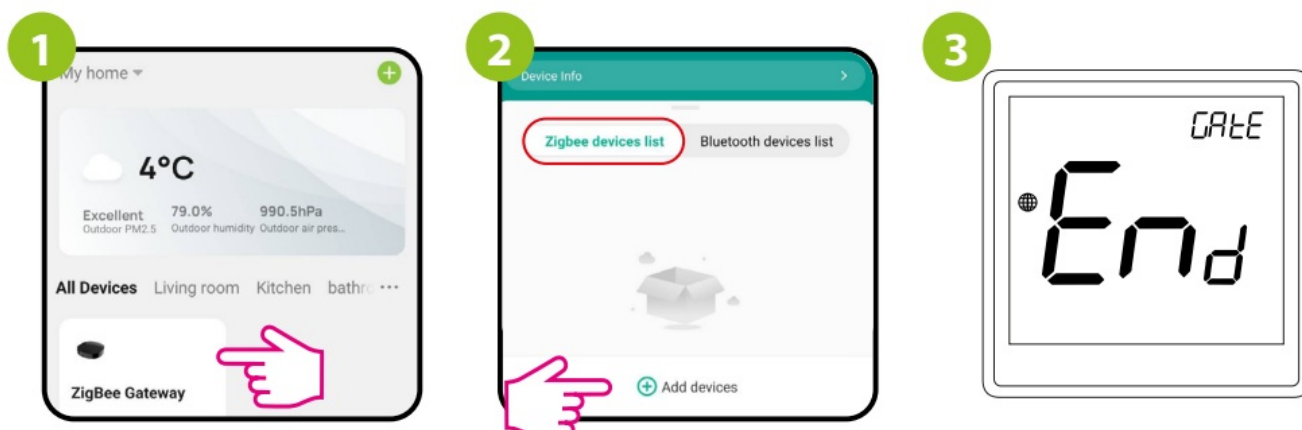


### STEP 3 – CONNECT THE THERMOSTAT TO ZigBee

- Make sure ZigBee Gateway has been added to the Engeo Smart app. Press and hold the ▲ and ▼ buttons on the thermostat until the display shows „PA”. Then release the keys. The pairing mode will be started up.
- Thermostat counts the time back (180s).



1. Enter the gateway interface.
2. In „Zigbee devices list” go „Add devices”.
3. Wait for the message “End” to appear on the thermostat screen.
- 4.



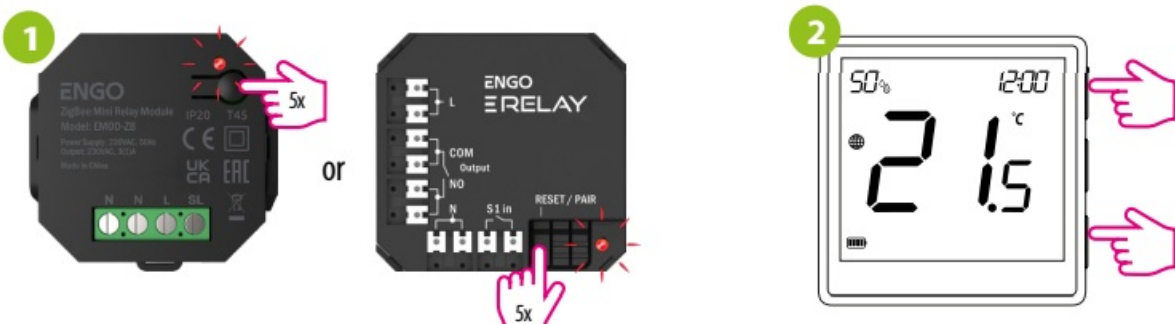
Name the device and click „Done”

5. The thermostat has been installed and displays the main interface.
6. On the controller screen globe icon appeared stating that he has been he added to the ZigBee network.



### Binding thermostat with the module/relay

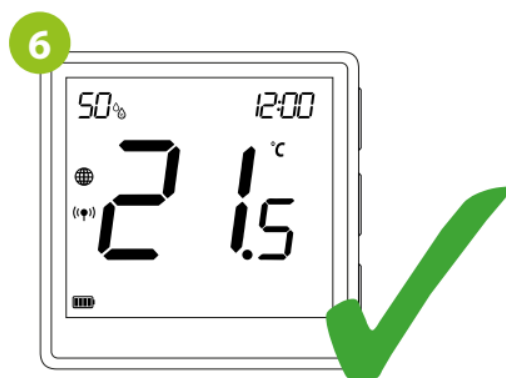
Make sure that the module/relay and thermostat are in the same ZigBee network (they are added to the same gateway).

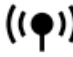


1. To properly link thermostat with the module/relay first click quickly the button on the device 5 times. The LED diode will start flashing slowly on red, which means the device is in binding mode.
2. On the EONE thermostat, hold ▲ and ▼ buttons until the “bind” message appears.



3. Release the keys, binding function process of linking thermostat with control box is active.
4. The “binding” process takes up to 300 seconds.



5. After successful binding operation „End” message will be displayed. LED on the module will stop flashing.
6. Both devices have been successfully linked. Thermostat displays the main screen, icon ”  ” appeared on the screen indicating connection with the receiver (module/relay in this case).



#### ATTENTION:

If the binding process fails, it must be repeated taking into account the distances between devices, obstacles and local radio signal interferences.



#### Remember:

Radio range can be increased by Enigo ZigBee repeaters.



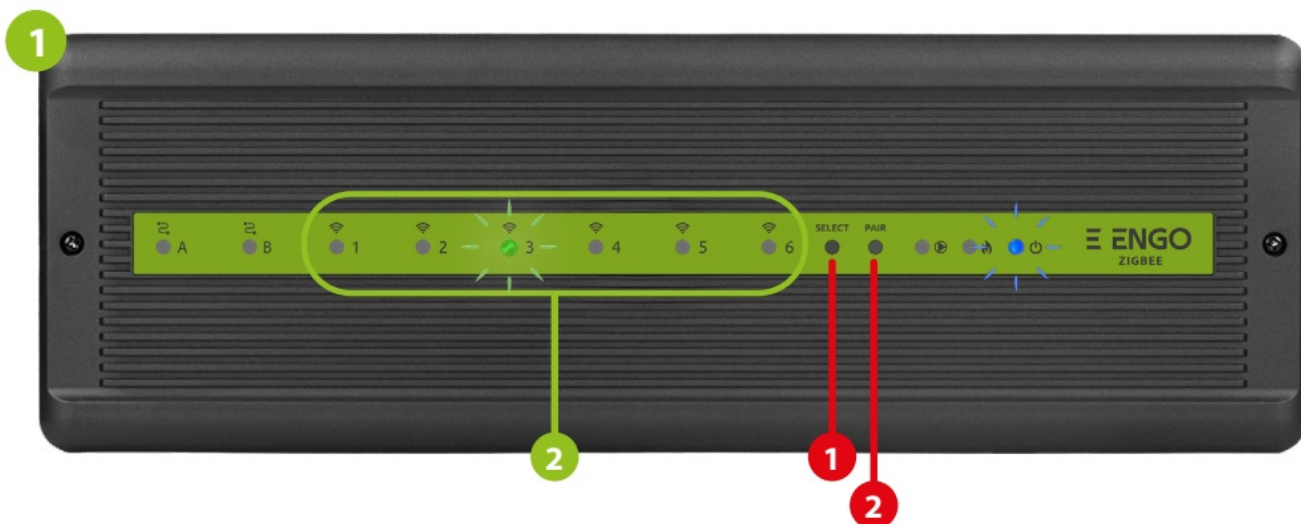
#### ATTENTION:

When the thermostat is binded with the module, the relay will turn off after 50 minutes, if the communication between the devices is lost.

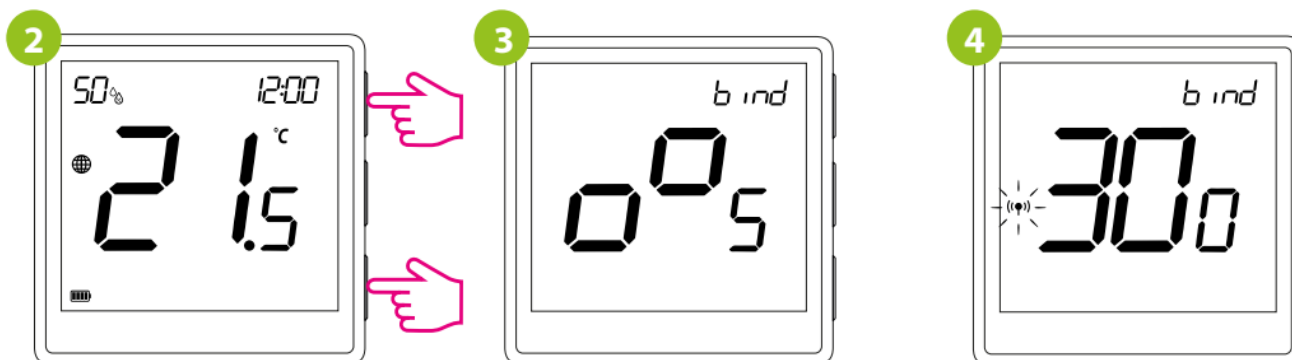
### Binding thermostat with the ECB62-ZB wireless control box


Make sure that the ECB62-ZB control box and thermostat are in the same ZigBee network (they are added to the same gateway) and the POWER LED lights up blue.

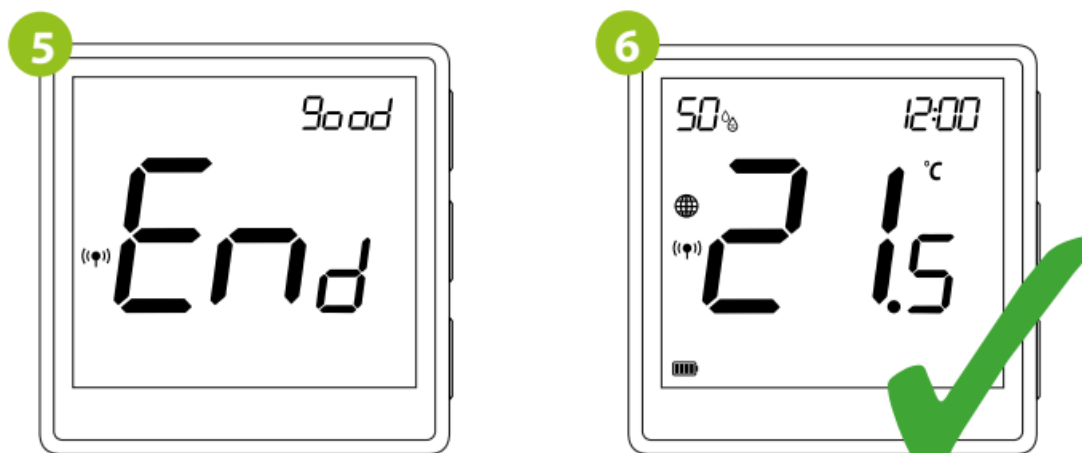
1. In order to correctly link thermostat with the control box, first select the zone in the control box with the SELECT button (1) (zone which you want to link with thermostat). The LED (2) will flash 3 times for the selected zone. Confirm your selection by clicking PAIR button (2). The LED (2) will flash green with the previously selected zone – binding process has started, it is active for 10 minutes and during this time you can link thermostat with the selected zone.



2. On the EONE thermostat, hold ▲ and ▼ buttons until the “bind” message appears.
3. Release the keys, binding function process of linking thermostat with control box is active.
4. The “binding” process takes up to 300 seconds.



5. After successful binding operation „End” message will be displayed.
6. Both devices have been successfully linked. Thermostat displays the main screen, icon “” appeared on the screen indicating connection with the receiver (ECB62ZB in this case).



#### ATTENTION:

If the binding process fails, it must be repeated taking into account the distances between devices, obstacles and local radio signal interferences.

#### Remember

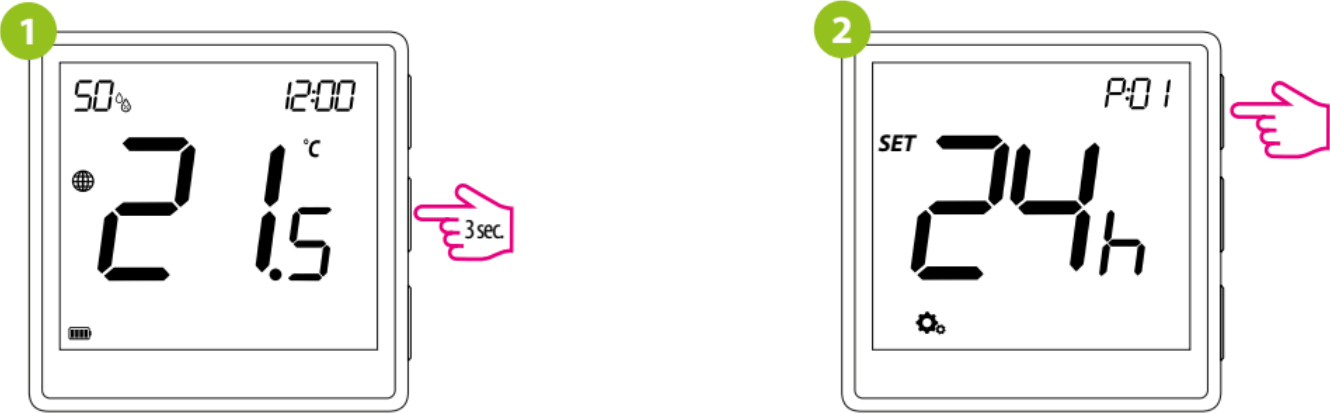
Radio range can be increased by Engo ZigBee repeaters.

ATTENTION

When the thermostat is binded with the module, the relay will turn off after 50 minutes, if the communication between the devices is lost.

Installer settings

1. To enter installer parameters press and hold button for 3 seconds.



Use ▲ or ▼ button to move between parameters. Enter the parameter by √. Edit the parameter using ▲ or ▼ . Confirm the new parameter value with the √ button.



Installer parameters

Pxx	Function	Value	Desription	Default value
P01	Clock format	12h	12 hour	24h
		24h	24 hour	
P02	Heating/Cooling Selection	🔥	Heating	🔥
		❄️	Cooling	
		TPI UFH	TPI for Underfloor Heating	
		TPI RAD	TPI for Radiators	
		TPI ELE	TPI for Electrical Heating	
		HIS 0.2	SPAN +/-0,1°C	

P03	Control algorithm	HIS 0.4	SPAN +/-0,2°C	TPI UF H  for heating HIS 1.0 for cooling
		HIS 0.6	SPAN +/-0,3°C	
		HIS 0.8	SPAN +/-0,4°C	
		HIS 1.0	SPAN +/-0,5°C	
		HIS 2.0	SPAN +/-1,0°C	
		HIS 3.0	SPAN +/-1,5°C	
		HIS 4.0	SPAN +/-2,0°C	
P04	Offset temperature	-3.5°C do +3.5°C	If the thermostat indicates wrong temperature, you can correct it by max $\pm 3.5^{\circ}\text{C}$	0°C
P05	"Minimum setpoint"	5°C – 45°C	Minimum heating / cooling temperature that can be set	5°C
P06	"Maximum setpoint"	5°C – 45°C	Maximum heating / cooling temperature that can be set	35°C
P07	S1/S2 Input	1	Disable	1
		2	External sensor as a floor sensor	
		3	External sensor as an air sensor	
		4	Occupancy sensor (ON/OFF volt free input)	
P08	Maximum floor temperature for heating (function active when P07=2)	5°C – 45°C	In order to protect the floor, the heating will be turned off, when the temperature of the floor sensor rises above the maximum value.	35°C
P09	Minimum floor temperature for heating (function active when P07=2)	5°C – 45°C	In order to protect the floor, the heating will be switched on, when the temperature of the floor sensor drops below the minimum value.	10°C
P10	Maximum floor temperature for cooling (function active when P07=2)	5°C – 45°C	In order to protect the floor, cooling will be switched on, when the temperature of the floor sensor exceeds the maximum value.	15°C

P11	Minimum floor temperature for cooling (function active when P07=2)	5°C – 45°C	In order to protect the floor, cooling will be turned off, when the temperature of the floor sensor drops below the minimum value	7°C
P12	Comfort warm floor	OFF Level 1 = 7min Level 2 = 11min Level 3 = 15min Level 4 = 19min Level 5 = 23min	This function helps to keep the floor warm, even if there is no heating demand from the room thermostat. This feature is available only for Heating Mode. User can select 5 levels of warm floor feature. Note that comfort warm floor function will activate heating for specified amount of time (in relation to Level setting chosen by user). Heating will be activated only if in the past 1 hour heating was OFF.	OFF
P13	Valve protection	ON OFF	Function disabled Function enabled	OFF
P14	Backlight brightness	10% – 100%	Adjustable in the range from 10 to 100%	50%
P15	PIN Code for settings access	NO PIN	Function disabled Function enabled	NO
P16	Require a PIN to unlock the keys every time (function active when P15=PIN)	NO YES	Function disabled Function enabled	NO
CLR	Clear settings factory reset	NO YES	No action Factory Reset	NO

### Factory reset

To RESET Thermostat to factory settings, hold down the  and  buttons until the FA message appears. Then release the keys. Thermostat will restart, restore default factory settings and displays the home screen. The device will be removed from the ZigBee network you will need to add/pair it again.



## Documents / Resources

	<p><a href="#">ENGO CONTROLS EONE-BATW, EONE-BATB Internet Controlled Thermostat</a> [pdf] User Guide</p> <p>EONE-BATW, EONE-BATB, EONE-BATW EONE-BATB Internet Controlled Thermostat, EONE-BATW EONE-BATB, Internet Controlled Thermostat, Controlled Thermostat, Thermostat</p>
--	---

## References

- [ENGO Controls - Sterowanie ogrzewaniem](#)
- [User Manual](#)

[Manuals+](#), [Privacy Policy](#)

This website is an independent publication and is neither affiliated with nor endorsed by any of the trademark owners. The "Bluetooth®" word mark and logos are registered trademarks owned by Bluetooth SIG, Inc. The "Wi-Fi®" word mark and logos are registered trademarks owned by the Wi-Fi Alliance. Any use of these marks on this website does not imply any affiliation with or endorsement.