



ENGO CONTROLS EDOOR-MINI ZigBee Door Window Sensor User Manual

[Home](#) » [ENGO CONTROLS](#) » ENGO CONTROLS EDOOR-MINI ZigBee Door Window Sensor User Manual 

Contents

- [1 ENGO CONTROLS EDOOR-MINI ZigBee Door Window Sensor](#)
- [2 Product Description](#)
- [3 Device description](#)
- [4 Technical specifications](#)
- [5 Introduction](#)
- [6 Product features](#)
- [7 Safety information](#)
- [8 Installation](#)
- [9 Installation sensor in the app](#)
- [10 Frequently Asked Questions](#)
- [11 Documents / Resources](#)
 - [11.1 References](#)
- [12 Related Posts](#)



ENGO CONTROLS EDOOR-MINI ZigBee Door Window Sensor



Technical Specifications

- Power supply: 2x battery CR1632
- Communication: ZigBee 3.0, 2.4GHz
- Max distance between elements: 15mm
- Sensor dimension: 44x21x9mm
- Magnet dimension: 44x8x9mm

Product Description

The EDOOR-MINI ZigBee Door/Window Sensor is a wireless, battery-operated device that detects the opening or closing status of doors or windows based on the distance between the magnet and the sensor. It sends signals to the Engo Smart app automatically upon any change in the state.

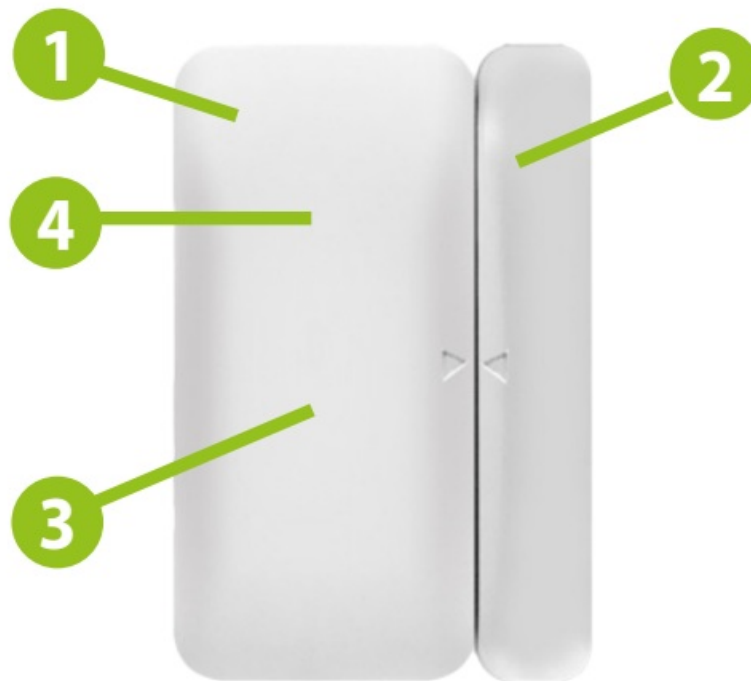
Device description

1. Sensor
2. Magnet
3. Function button

Pressing for 8 seconds activates pairing mode and factory reset

4. LED diode

Flashing blue – active pairing mode with the application Single blue flash – flood detection






Technical specifications

Power supply	2x battery CR1632
Comunication	ZigBee 3.0, 2.4GHz
Max distance between elements	15mm
Sensor dimension Magnet dimension	44x21x9mm 44x8x9mm

Introduction

The wireless, battery-operated sensor detects the opening or closing status of a window/door based on the distance between the magnet and the sensor. Any change in state (opening/closing) automatically sends a signal to the Engo Smart app. The sensor can be used, for example, to create automation with temperature controllers to turn ON/OFF the heating system, or anywhere else, where the information about the opening or closing of the door, window, garage door is needed..

Product features

- 
 Works with ENGO Smart (Compatible with Tuya App)
- 
 ZigBee 3.0 communication standard
- 
 Opening detected by moving the magnet away from the sensor



- Can be mounted on any openable element (door, windows, cabinets, safe)

Product Compliance

This product complies with the following EU Directives: 2014/53/EU, 2011/65/EU.

Safety information

Use in accordance with national and EU regulations. Use the device only as intended, keeping it in a dry condition. The product is for indoor use only. Installation must be carried out by a qualified person in accordance with national and EU regulations.

Installation

Installation must be performed by a qualified person with appropriate electrical qualifications, in accordance with the standards and regulations in force in a given country and in the EU. The manufacturer is not responsible for non-compliance with the instructions.

ATTENTION

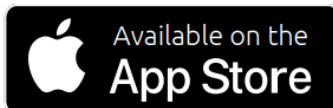
For the entire installation, there may be additional protection requirements, which the installer is responsible for.

Installation sensor in the app

Make sure your router is within range of your smartphone. Make sure you are connected to the Internet. This will reduce the pairing time of the device.

STEP 1 – DOWNLOAD ENGO SMART APP

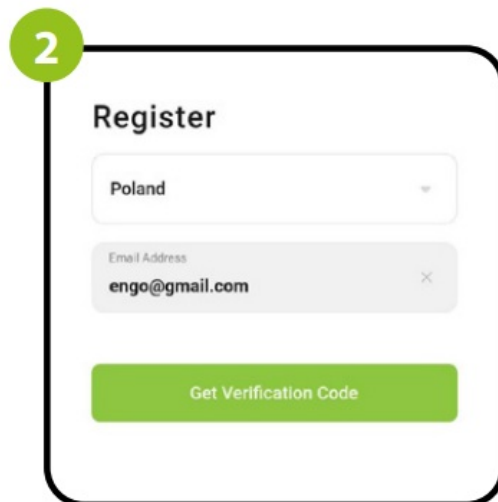
Download the ENGO Smart app from Google Play or Apple App Store and install it on your smartphone.



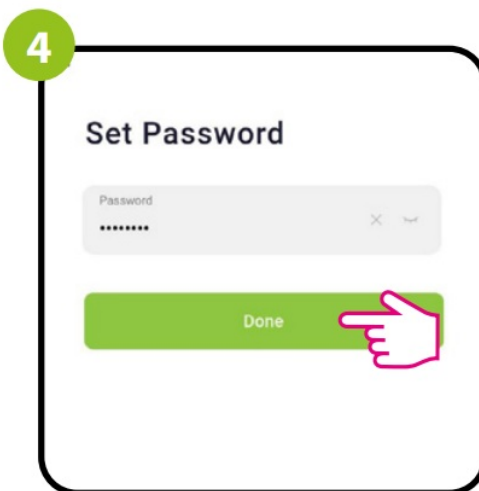
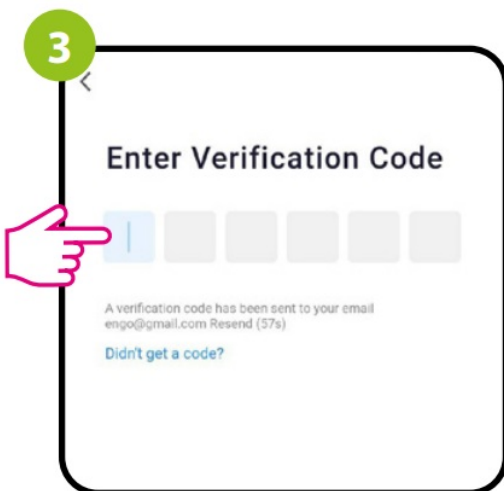
STEP 2 – REGISTER THE NEW ACCOUNT

To register a new account, please follow the steps below:

1. Click „Register” to create new account.
2. Enter your e-mail address to which the verification code will be sent.



3. Enter the verification code received in the email. Remember that you only have 60 seconds to enter the code!!
4. Then set the login password.



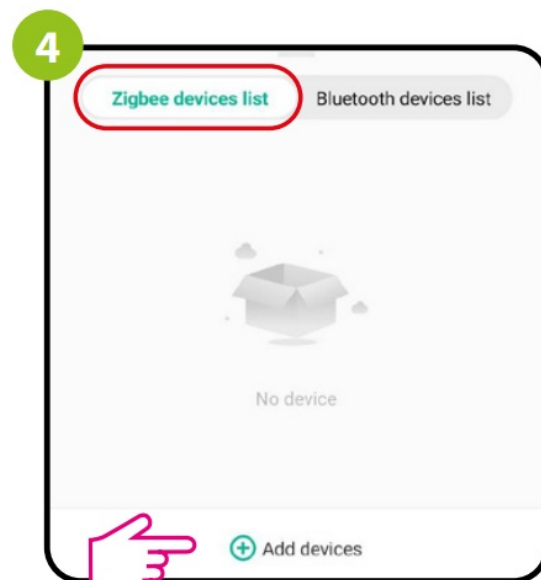
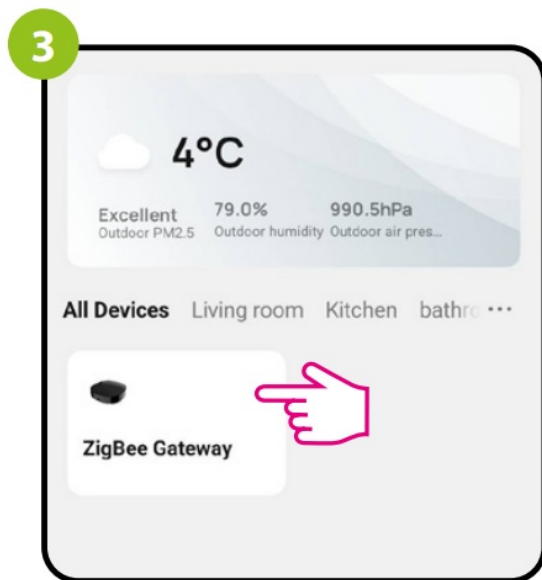
STEP 3 – CONNECT THE SENSOR TO ZigBee network

After installing the application and creating an account, follow these steps:

1. Make sure ZigBee gateway has been added to the Engo Smart app.
2. Press and hold the button for about 8 seconds until the blue LED starts flashing. The sensor will enter pairing mode.

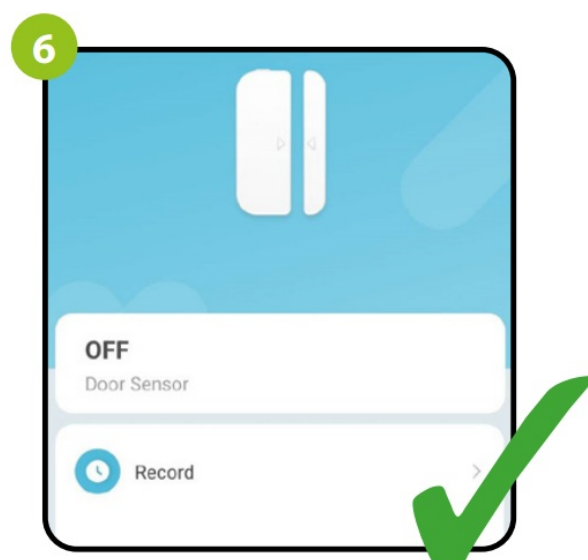
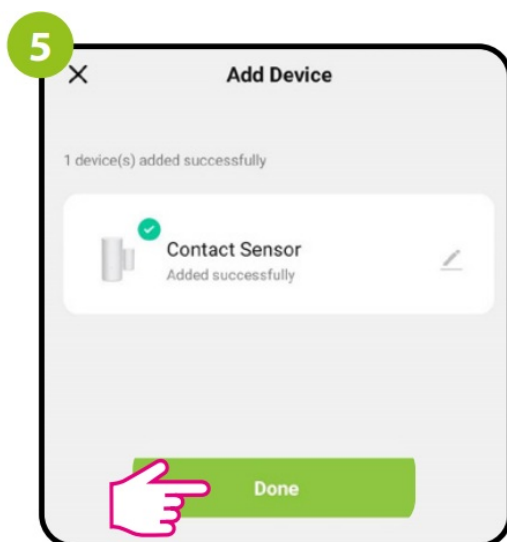


3. Enter the gateway interface.
4. In „Zigbee devices list” go „Add devices”.



5. Wait until the application finds the device and click "Done".

6. The sensor has been installed and displays the main interface.






Producer:

- Engo Controls sp. z o.o. sp. k.
- 43-262 Kobielice
- Rolna 4 St.
- Poland
- www.engocontrols.com

Frequently Asked Questions

- **Q: What is the maximum distance between the sensor and magnet?**
A: The maximum distance between the elements is 15mm.
- **Q: What communication standard does the sensor use?**
A: The sensor uses ZigBee 3.0 communication standard.

Documents / Resources

	ENGO CONTROLS EDOOR-MINI ZigBee Door Window Sensor [pdf] User Manual EDOOR-MINI ZigBee Door Window Sensor, EDOOR-MINI, ZigBee Door Window Sensor, Window Sensor, Sensor
---	--

References

- [User Manual](#)

[Manuals](#), [Privacy Policy](#)

This website is an independent publication and is neither affiliated with nor endorsed by any of the trademark owners. The "Bluetooth®" word mark and logos are registered trademarks owned by Bluetooth SIG, Inc. The "Wi-Fi®" word mark and logos are registered trademarks owned by the Wi-Fi Alliance. Any use of these marks on this website does not imply any affiliation with or endorsement.