



**EDOOR-MINI
Window Sensor**



ENGO CONTROLS EDOOR-MINI Window Sensor User Guide

[Home](#) » [ENGO CONTROLS](#) » ENGO CONTROLS EDOOR-MINI Window Sensor User Guide 

Contents

- [1 ENGO CONTROLS EDOOR-MINI Window Sensor](#)
- [2 Product Information](#)
- [3 FAQ](#)
- [4 Device description](#)
- [5 Technical specifications](#)
- [6 Introduction](#)
- [7 Product features](#)
- [8 Safety information](#)
- [9 Installation](#)
- [10 Documents / Resources](#)
 - [10.1 References](#)
- [11 Related Posts](#)



ENGO CONTROLS EDOOR-MINI Window Sensor



Specifications

- Power supply: 2x battery CR1632
- Communication: ZigBee 3.0, 2.4GHz
- Max distance between elements: 15mm
- Sensor dimension: 44x21x9mm
- Magnet dimension: 44x8x9mm

Product Information

Introduction: The EDOOR-MINI is a ZigBee Door/Window Sensor that works with ENGO Smart App. It detects openings by moving the magnet away from the sensor and can be mounted on various openable elements like doors, windows, cabinets, and safes.

Product Features:

- Works with ENGO Smart App (Compatible with Tuya App)
- ZigBee 3.0 communication standard
- Opening detected by moving the magnet away from the sensor
- Suitable for indoor use only

Product Compliance: Complies with EU Directives 2014/53/EU, 2011/65/EU.

Safety Information: Use in accordance with national and EU regulations. Keep the device dry and only use it indoors. Installation should be done by a qualified person following regulations.

Installation Instructions

Installation: Must be performed by a qualified person with appropriate electrical qualifications following standards and regulations.

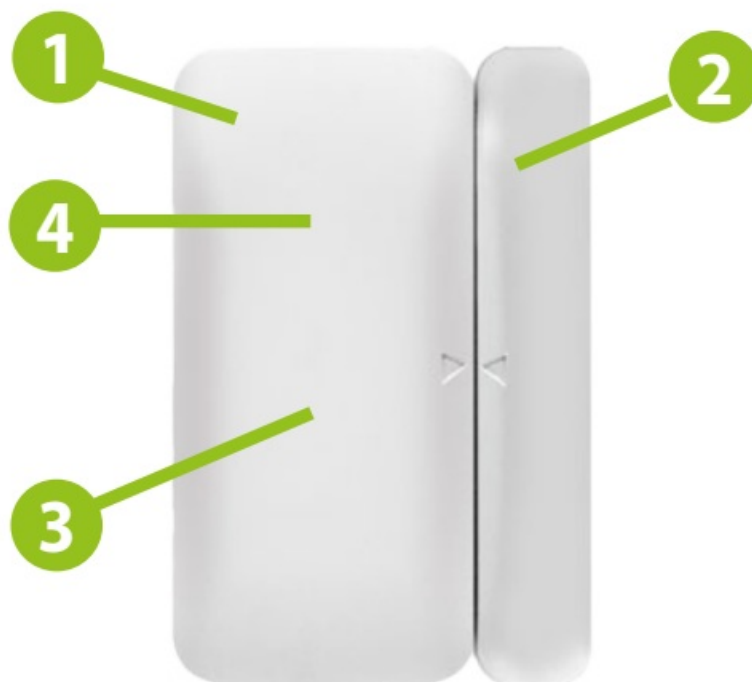
Installation Steps:

1. Ensure router is within range of smartphone and connected to the internet.
2. **Step 1 – Download ENGO Smart App:** Download from Google Play or Apple App Store.
3. **Step 2 – Register New Account:** Follow the steps in the app to create a new account.
4. **Step 3 – Connect Sensor to ZigBee Network:**
 1. Add ZigBee gateway to Engo Smart app.
 2. Press and hold the function button on the sensor for about 8 seconds until the blue LED starts flashing.
 3. Follow app instructions to complete registration and pairing.

FAQ

- **Q: Can the EDOOR-MINI sensor be used outdoors?**
 - A: No, this sensor is designed for indoor use only.
- **Q: What type of batteries does the sensor use?**
 - A: The sensor uses 2x CR1632 batteries.
- **Q: How far can the sensor be from the magnet to detect openings?**
 - A: The maximum distance between the elements for detection is 15mm.

Device description



1. Sensor
2. Magnet
3. Function button

Pressing for 8 seconds activates pairing mode and factory reset

4. LED diode

Flashing blue – active pairing mode with the application Single blue flash -open/closing detection





Technical specifications

- Power supply 2x battery CR1632
- Communication ZigBee 3.0,
 - 2.4GHz
- Max distance between elements 15mm
- Sensor dimension 44x21x9mm
- Magnet dimension 44x8x9mm

Introduction

The wireless, battery-operated sensor detects the opening or closing status of a window/ door based on the distance between the magnet and the sensor. Any change in state (opening/closing) automatically sends a signal to the Engo Smart app. The sensor can be used, for example, to create automation with temperature controllers to turn ON/OFF the heating system, or anywhere else, where the information about the opening or closing of the door, window, garage door is needed.. A ZigBee internet gateway is required for installation in the application.

Product features

-  Works with ENGO Smart (Compatible with Tuya App)
-  ZigBee 3.0 communication standard
-  Opening detected by moving the magnet away from the sensor
-  Can be mounted on any openable element (door, windows, cabinets, safe)

Product Compliance

This product complies with the following EU Directives: 2014/53/EU, 2011/65/EU

Safety information

Use in accordance with national and EU regulations. Use the device only as intended, keeping it in a dry condition. The product is for indoor use only. Installation must be carried out by a qualified person in accordance with national and EU regulations.

Installation

Installation must be performed by a qualified person with appropriate electrical qualifications, in accordance with the standards and regulations in force in a given country and in the EU. The manufacturer is not responsible for non-compliance with the instructions.

ATTENTION:

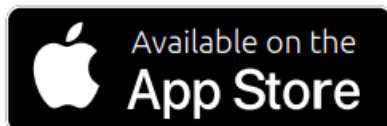
For the entire installation, there may be additional protection requirements, which the installer is responsible for.

Installation sensor in the app

Make sure your router is within range of your smartphone. Make sure you are connected to the Internet. This will reduce the pairing time of the device.

STEP 1 – DOWNLOAD ENGO SMART APP

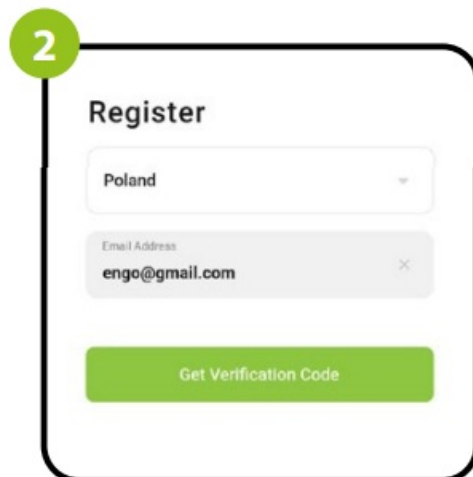
- Download the ENGO Smart app from Google Play or Apple App Store and install it on your smartphone.



STEP 2 – REGISTER THE NEW ACCOUNT

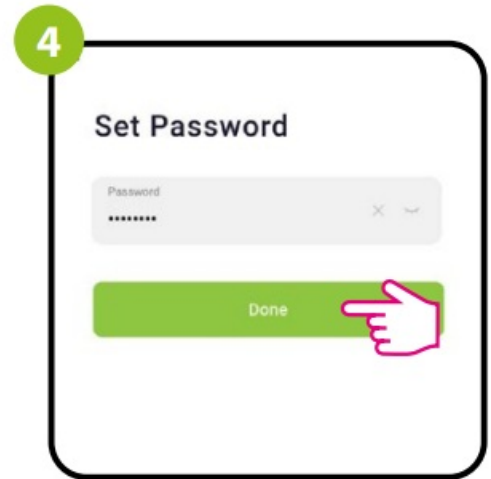
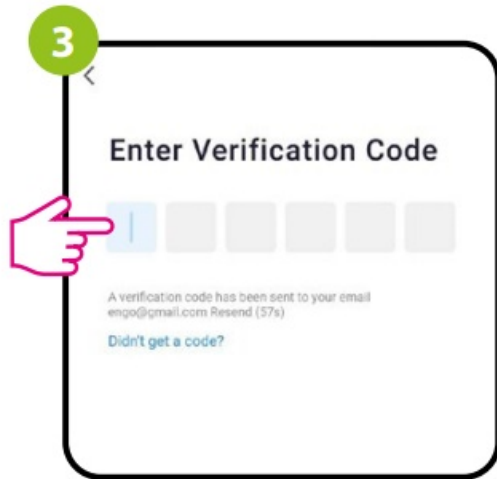
To register a new account, please follow the steps below:

1. Click „Register” to create new account.
2. Enter your e-mail address to which the verification code will be sent.



3. Enter the verification code received in the email. Remember that you only have 60 seconds to enter the code!!

4. Then set the login password



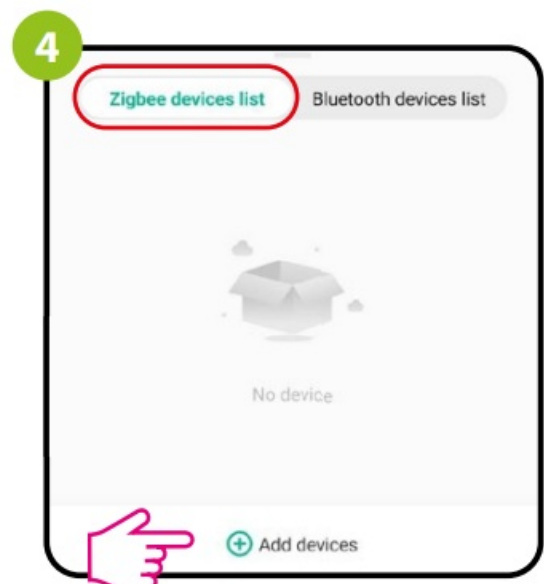
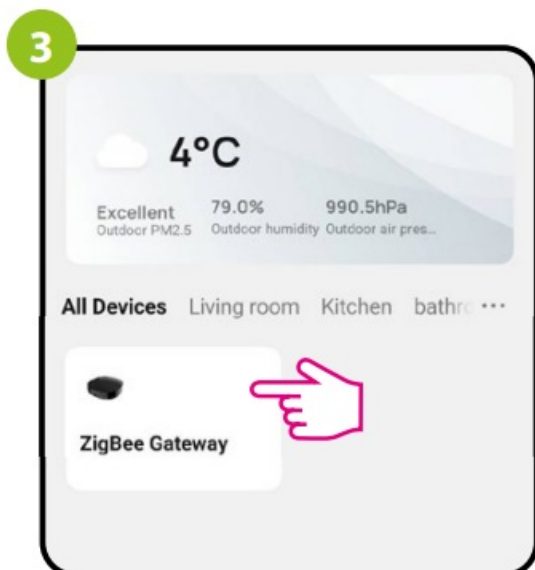
STEP 3 – CONNECT THE SENSOR TO ZigBee network

After installing the application and creating an account, follow these steps:

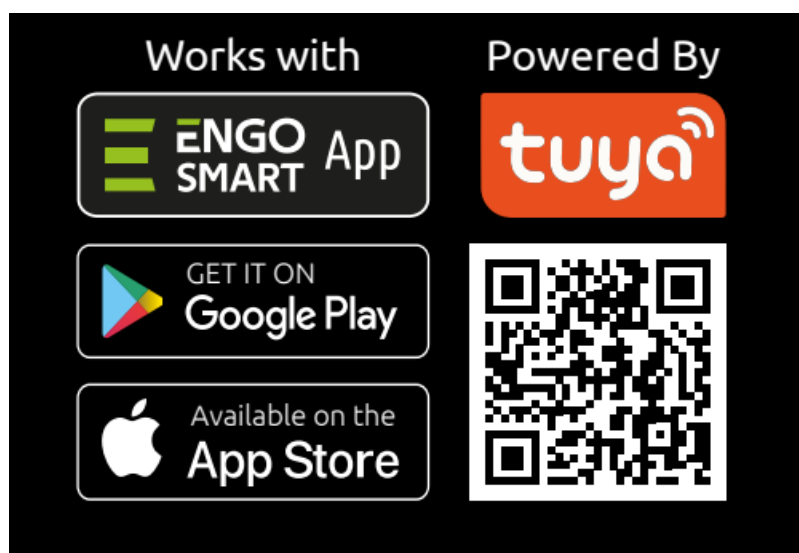
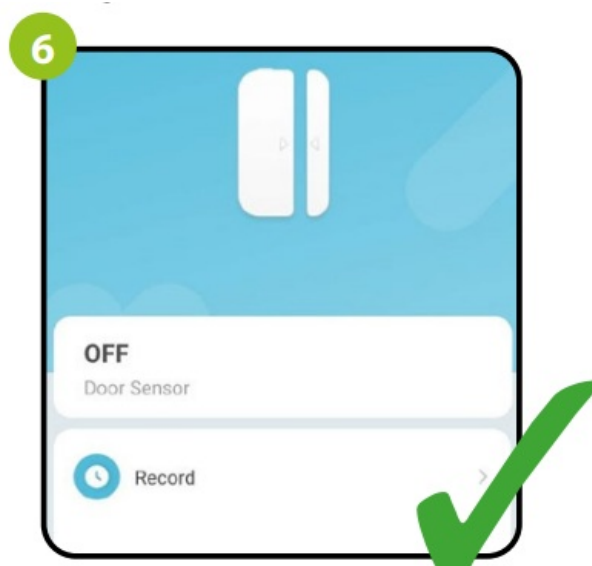
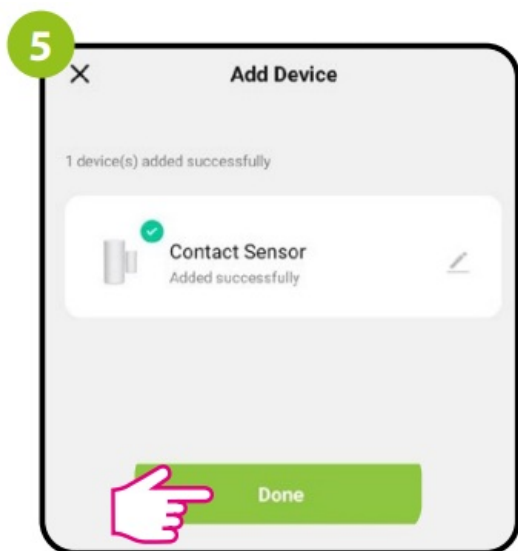
1. Make sure ZigBee gateway has been added to the Engo Smart app.
2. Press and hold the button for about 8 seconds until the blue LED starts flashing. The sensor will enter pairing mode.



3. Enter the gateway interface.
4. In „Zigbee devices list” go „Add devices”.



5. Wait until the application finds the device and click "Done".
6. The sensor has been installed and displays the main interface.



Producer: Engo Controls sp. z o.o. sp. k. 43-262 Kobielice Rolna 4 St. Poland

- www.engocontrols.com

Documents / Resources



[ENGO CONTROLS EDOOR-MINI Window Sensor](#) [pdf] User Guide
EDOOR-MINI Window Sensor, EDOOR-MINI, Window Sensor, Sensor

References

- [ENGO Controls - Sterowanie ogrzewaniem](#)
- [User Manual](#)

[Manuals+](#), [Privacy Policy](#)

This website is an independent publication and is neither affiliated with nor endorsed by any of the trademark owners. The "Bluetooth®" word mark and logos are registered trademarks owned by Bluetooth SIG, Inc. The "Wi-Fi®" word mark and logos are registered trademarks owned by the Wi-Fi Alliance. Any use of these marks on this website does not imply any affiliation with or endorsement.