

ENGO
CONTROLS
ECAM Smart
Camera



ENGO CONTROLS ECAM Smart Camera User Guide

[Home](#) » [ENGO CONTROLS](#) » ENGO CONTROLS ECAM Smart Camera User Guide 

Contents

- [1 ENGO CONTROLS ECAM Smart Camera](#)
- [2 Technical Specifications](#)
- [3 Introduction](#)
- [4 Product Features](#)
- [5 Camera description](#)
- [6 Factory reset](#)
- [7 FAQs](#)
- [8 Documents / Resources](#)
 - [8.1 References](#)
- [9 Related Posts](#)



ENGO CONTROLS ECAM Smart Camera



Technical Specifications


- **Power supply:** 5V DC USB Type C

- **Communication:** Wi-Fi 2.4GHz
- **Resolution:** 4Mpx 2560*1440P
- **Storage:** TF (micro SD) card not included (Max to 256GB)
- **Dimensions:** 72 x 108 mm
- **Product Compliance:** EU Directives: 2014/53/EU, 2011/65/EU

Introduction

The smart camera is a component of the ENGO Smart system. It is used for visual monitoring of the premises. It provides convenient control of high-quality images: panorama, different viewing angles (camera tilt degrees), zoom, and horizontal and vertical rotation. It is programmed and operated in the ENGO Smart mobile app. It enhances the security of the supervised premises.

Product Features

| | |
|---|---|
|  | 4Mpx 2560*1440P |
|  | 2-way audio |
|  | Motion detection |
|  | Move tracking |
|  | Infrared (IR) up to a distance of 10m |
|  | Pan-tilt-zoom (PTZ), horizontal 355°, vertical 110° |
|  | Angle of lance 108° |
|  | Electronic nanny function |
|  | WDR technology (optimizing image exposure) |
|  | vertical/horizontal installation |
|  | possibility to create automation and scenarios in the ENGO Smart application |

Safety information

Use by national and EU regulations. Use the device only as intended, keeping it in a dry condition. The product is for indoor use only. Please read the entire manual, before installation or use.

Camera description

1. Microphone
2. Camera lens
3. LED diode
4. IR illumination
5. Micro SD slot
6. Loudspeaker

7. USB type C power socket

8. Reset button



Inserting a memory card

Slide the black part of the camera in the direction indicated by the arrow. Slide the card into the micro SD card slot until you hear a click.



Installation of the camera in the app

Make sure your router is within range of your smartphone. Make sure you are connected to the Internet. This will reduce the pairing time of the device.

STEP1 – DOWNLAD ENGO SMART APP

Download the ENGO Smart app from Google Play or Apple App Store and install it on your smartphone.



STEP 2 – REGISTER THE NEW ACCOUNT

To register a new account, please follow the steps below:

1

Click „Sign Up” to create new account.

2

Enter your e-mail address to which the verification code will be sent.

3

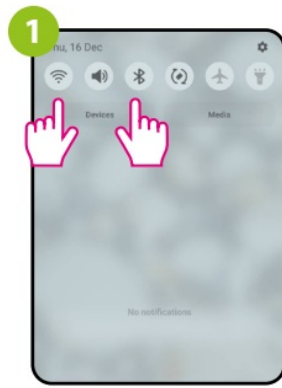
Enter the verification code received in the email. Remember that you only have 60 seconds to enter the code!

4

Then set the login password.

STEP 3A – CONNECT CAMERA TO WI-FI- Connection via Bluetooth

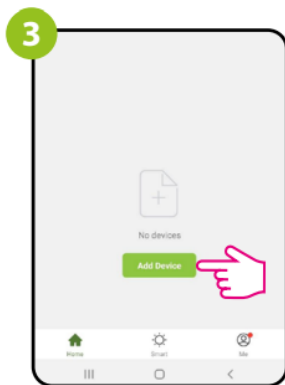
After installing the app and creating an account:



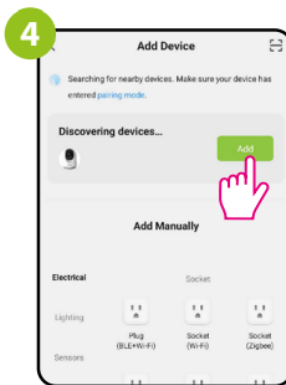
On your mobile device, make sure the ENGO Smart has access to permissions (Location, Bluetooth, Nearby devices). Then turn on Bluetooth and Location. Connect to 2.4GHz Wi-Fi network to which you want to assign the device.



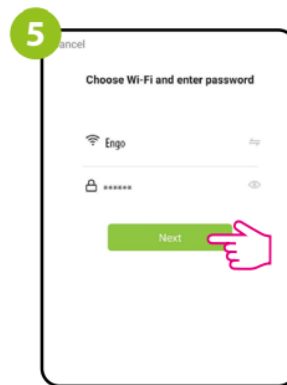
Make sure the camera is powered on. Then press and hold the button on the back of the camera for approximately 5 seconds, until the beep. The blue LED on the front of the unit will then start flashing. The pairing mode is enabled.



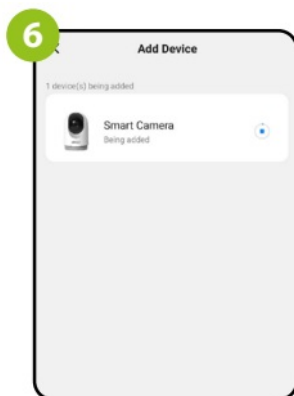
In the app, select: „Add Device”.



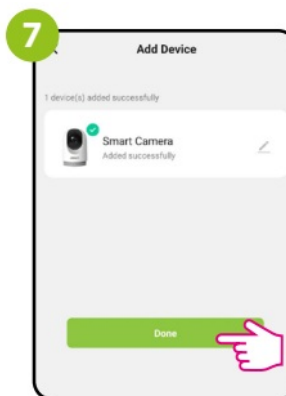
After finding the camera, go „Add”



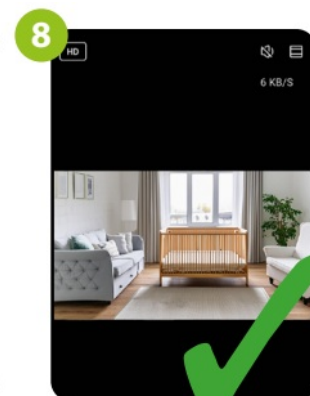
Select the Wi-Fi network in which the camera will operate and enter the password of this network.



Wait for the app to configure the device with the selected Wi-Fi network.

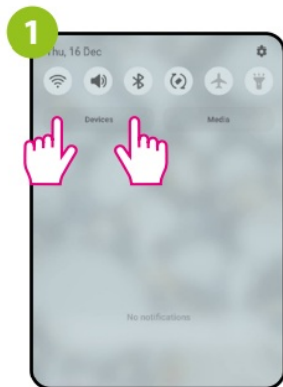


Go „DONE”.



The camera has been installed and displays the main interface.

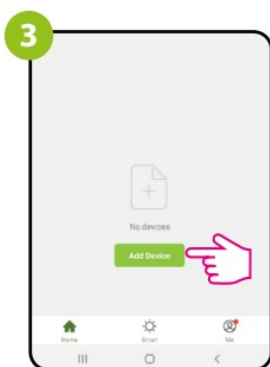
STEP 3B – CONNECT CAMERA TO WI-FI- Connection via QR Code
After installing the app and creating an account:



On your mobile device, make sure the ENGO Smart has access to permissions (Location, Bluetooth, Nearby devices). Then turn on Bluetooth and Location. Connect to 2.4GHz Wi-Fi network to which you want to assign the device.



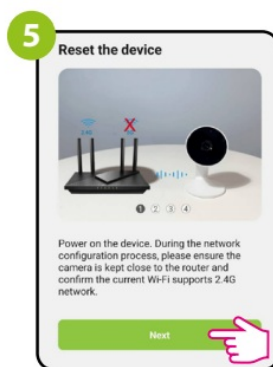
Make sure the camera is powered on. Then press and hold the button on the back of the camera for approximately 5 seconds, until the beep. The blue LED on the front of the unit will then start flashing. The pairing mode is enabled.



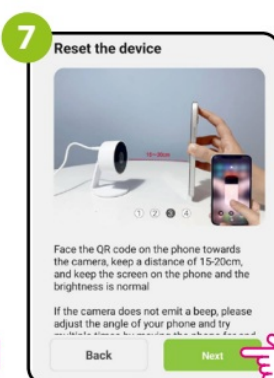
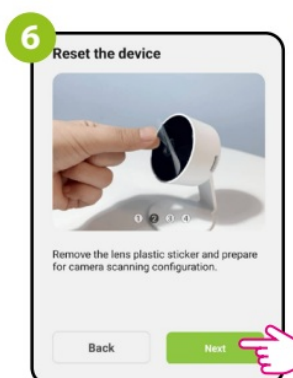
In the app, select: „Add Device“.



Find and click on the Wi-Fi camera in the device list.



Then go „Next“.



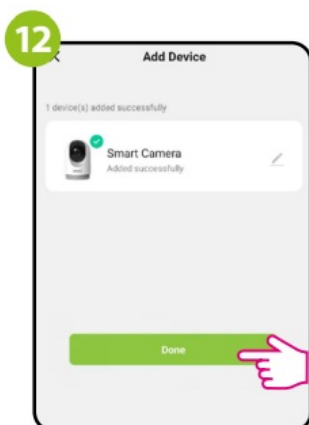
Follow the instructions displayed on the smartphone screen.



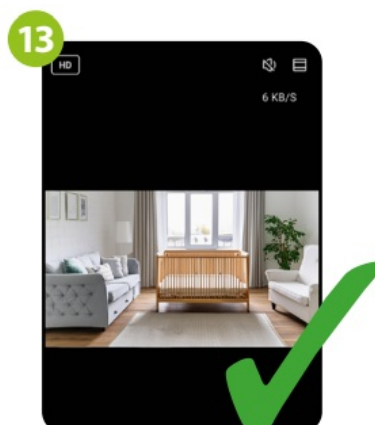
Select the Wi-Fi network in which the camera will operate and enter the password of this network.

Point the camera at the QR code displayed in the app, click „I heard the sound” after the beep.

Wait for the app to configure the device with the selected Wi-Fi network.



Go „DONE”.



The camera has been installed and displays the main interface.

Factory reset

To restore the camera's default settings, hold down the Reset button for about 5 seconds until a beep sounds. Then release the button. The camera will restart, restore the default (factory) values, and be ready to be added to the application again.



FAQs

Q: Can I use a memory card larger than 256GB with this camera?

A: No, the camera supports 256GB micro SD cards.

Q: How can I reset the camera?

A: To reset the camera, press and hold the reset button located at the back of the unit for a few seconds until you hear a beep sound.

Documents / Resources



[ENGO CONTROLS ECAM Smart Camera](#) [pdf] User Guide
ECAM Smart Camera, ECAM, Smart Camera, Camera

References

- [ENGO Controls - Sterowanie ogrzewaniem](#)
- [User Manual](#)

[Manuals+](#), [Privacy Policy](#)

This website is an independent publication and is neither affiliated with nor endorsed by any of the trademark owners. The "Bluetooth®" word mark and logos are registered trademarks owned by Bluetooth SIG, Inc. The "Wi-Fi®" word mark and logos are registered trademarks owned by the Wi-Fi Alliance. Any use of these marks on this website does not imply any affiliation with or endorsement.