



# ENGO CONTROLS ECAM-L2 WiFi Smart Floodlight Camera User Guide

[Home](#) » [ENGO CONTROLS](#) » ENGO CONTROLS ECAM-L2 WiFi Smart Floodlight Camera User Guide 

## Contents

- [1 ENGO CONTROLS ECAM-L2 WiFi Smart Floodlight Camera](#)
- [2 Product Usage Instructions](#)
- [3 Technical specification](#)
- [4 Product Compliance](#)
- [5 Introduction](#)
- [6 Product features](#)
- [7 Installation](#)
- [8 Camera description](#)
- [9 Factory reset](#)
- [10 Documents / Resources](#)
  - [10.1 References](#)
- [11 Related Posts](#)



**ENGO CONTROLS ECAM-L2 WiFi Smart Floodlight Camera**



## Technical Specifications

- Power supply: 230V AC
- Communication: Wi-Fi 2.4GHz
- Lumen: 2500 – 3000lm
- Resolution: 4Mpx 2560\*1440P
- Local storage: Micro SD (Max 256GB) – card
- IP protection class: IP65
- Dimensions: 283 x 133 x 184 mm

## Product Features

- 4Mpx 2560\*1440P resolution
- 2-way audio
- Motion detection
- Move tracking

## Product Usage Instructions

### Safety Information

Use the product in compliance with national and EU regulations.  
Installation should only be done by a qualified person following the regulations.

## Installation of the Camera in the App

1. **STEP 1 – DOWNLOAD ENG0 SMART APP:** Download the ENG0 Smart app from Google Play or Apple App Store and install it on your smartphone.

2. **STEP 2 – REGISTER THE NEW ACCOUNT:** Register a new account by following the steps provided in the app.
3. **STEP 3A – CONNECT CAMERA TO WI-FI- Connection via Bluetooth:** Follow the instructions in the app to connect the camera to Wi-Fi via Bluetooth.
4. **STEP 3B – CONNECT CAMERA TO WI-FI- Connection via QR Code:** Connect the camera to Wi-Fi by scanning the QR code provided in the app.

#### **Frequently Asked Questions (FAQ):**

**Q: What is the maximum storage capacity supported for the microSD card?**

A: The camera supports microSD cards up to 256GB capacity.

#### **Technical specification**

- Power supply 230V AC
- Communication Wi-Fi 2.4GHz
- Lumen 2500 – 3000lm
- Resolution 4Mpx 2560\*1440P
- Local storage
- Micro SD(Max 256GB)- card not included
- Minimum requirements of a microSDXC card
- -full HD speed class – C10/U1/V10
- IP protection class IP65
- Dimmension [mm] 283 x 133 x 184

#### **Product Compliance**

This product complies with the following EU Directives: 2014/53/EU, 2011/65/EU.

#### **Introduction**

The outdoor camera offers Full HD 4MP resolution and a wide 108° viewing angle. The built-in LED lamp with adjustable brightness effectively illuminates the monitored area. Thanks to the motion detection function, the camera reacts to any unwanted movements. The device has two-way audio communication with noise reduction. The camera is equipped with a memory card slot with a capacity of up to 256GB. The camera is suitable for a wide temperature range, from -10°C to +50°C, making it suitable for all conditions. In addition, thanks to the push notification function, users can receive instant alerts via the Engo Smart app.

#### **Product features**



### Safety Information

Use in accordance with national and EU regulations. Use the device only as intended. Installation must be carried out by a qualified person in accordance with national and EU regulations.

### Installation

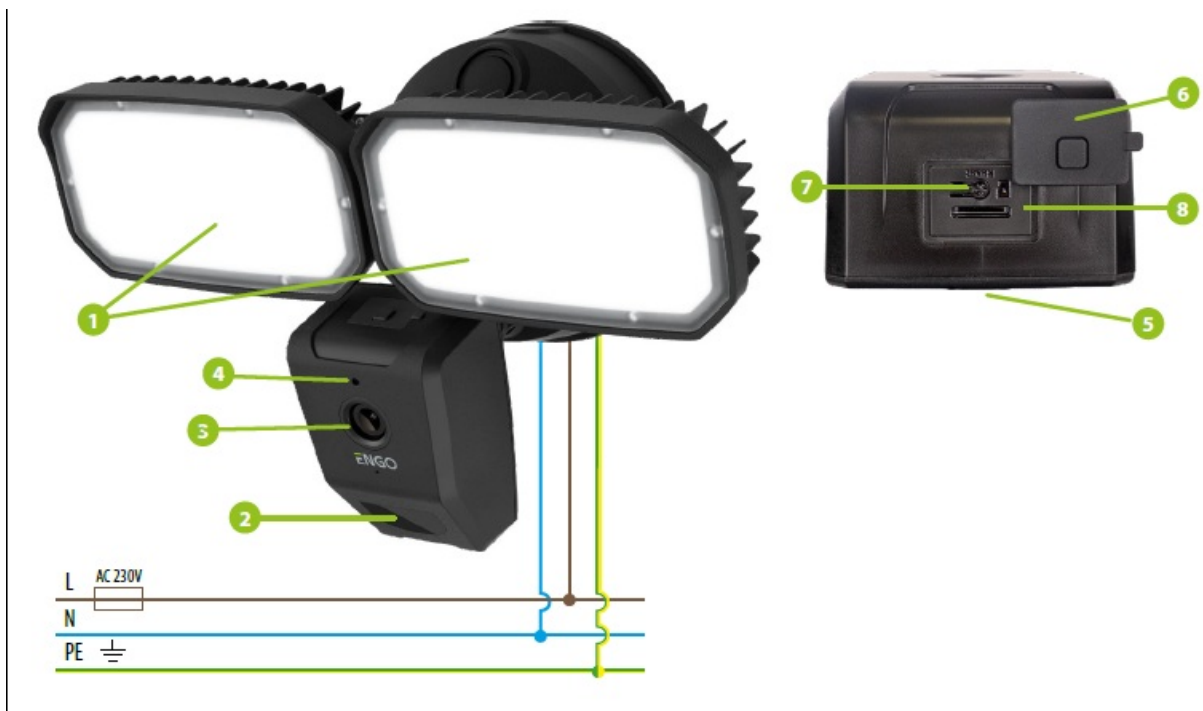
Installation must be performed by a qualified person with appropriate electrical qualifications, in accordance with the standards and regulations in force in a given country and in the EU. The manufacturer is not responsible for non-compliance with the instructions.

### WARNING

For the entire installation, there may be additional protection requirements, which the installer is responsible for (e.g., installation of an additional differential pressure overflow valve).

### Camera description

1. LED lamps
2. Light sensor
3. Camera lens
4. Microphone
5. Loudspeaker
6. Moisture protection
7. Reset button
8. Micro SD slot



### Installation of the camera in the app

Make sure your router is within range of your smartphone. Make sure you are connected to the Internet. This will reduce the pairing time of the device.

#### 1. STEP1 – DOWNLAD ENGO SMART APP

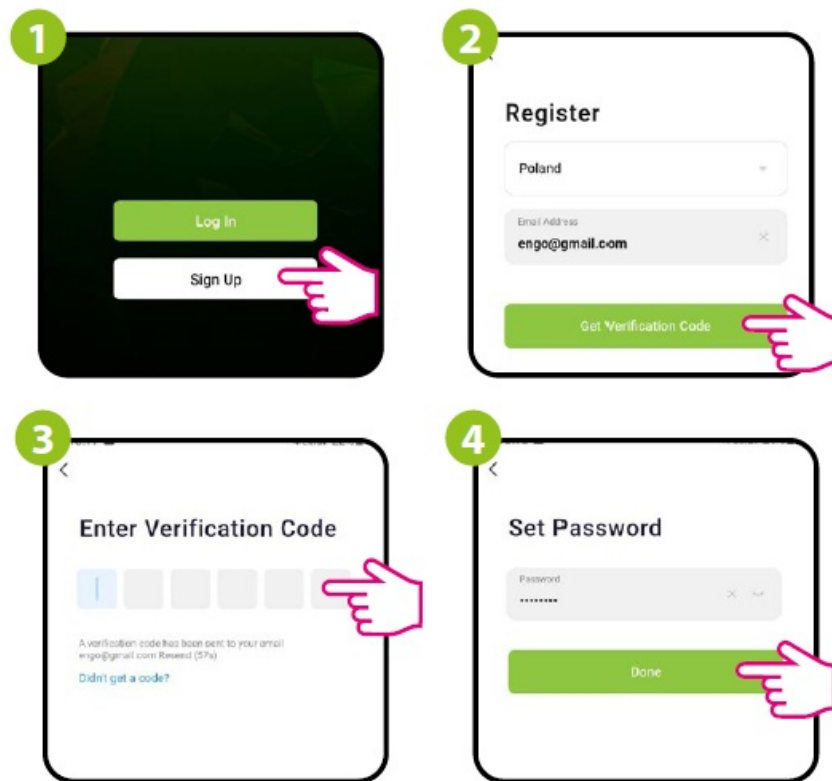
Download the ENGO Smart app from Google Play or Apple App Store and install it on your smartphone.



#### 2. STEP 2 – REGISTER THE NEW ACCOUNT

To register a new account, please follow the steps below:

1. Click „Sign Up” to create new account.
2. Enter your e-mail address to which the verification code will be sent.
3. Enter the verification code received in the email.
4. Then set the login password.



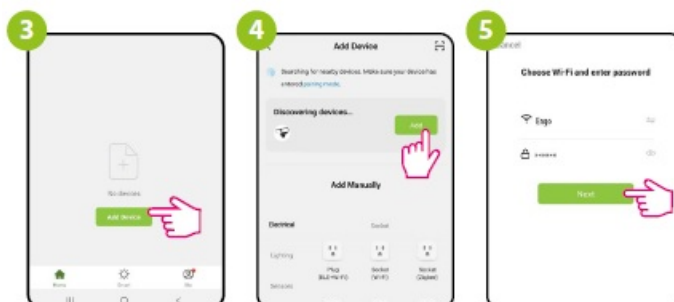
### 3. STEP 3A – CONNECT CAMERA TO WI-FI- Connection via Bluetooth

After installing the app and creating an account:

1. On your mobile device, make sure the ENGO Smart has access to permissions (Location, Bluetooth, Nearby devices). Then turn on Bluetooth and Location. Connect to 2.4GHz Wi-Fi network to which you want to assign the device.
2. Make sure the camera is powered on. Then press and hold the button on the back of the camera for approximately 5 seconds, until the beep. The blue LED on the front of the unit will then start flashing. The pairing mode is enabled.

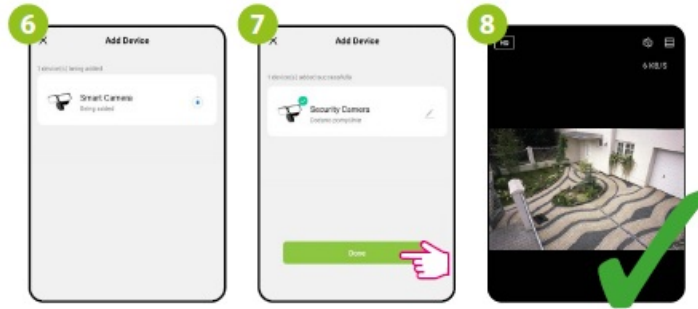


3. In the app, select: „Add Device”.
4. After finding the camera, go „Add”
5. Select the Wi-Fi network in which the camera will operate and enter the password of this network.



6. Wait for the app to configure the device with the selected Wi-Fi network.
7. Go „DONE”.

8. The camera has been installed and displays the main interface.



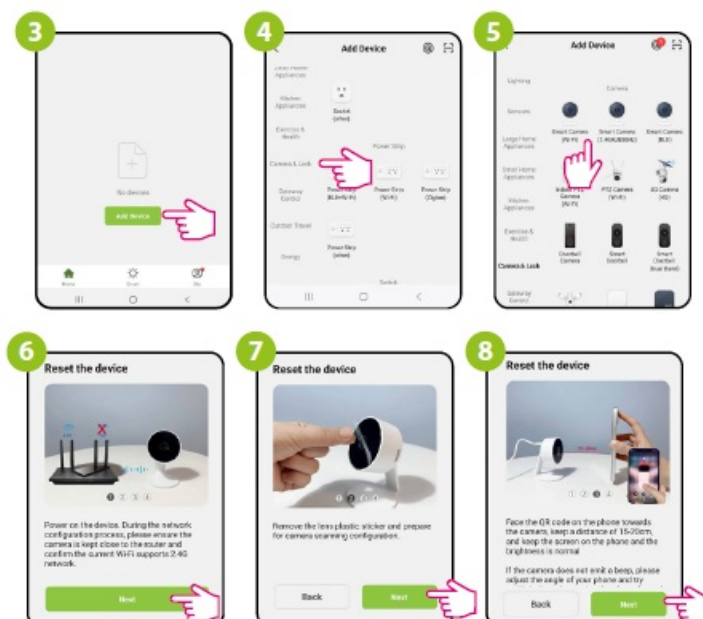
### STEP 3B – CONNECT CAMERA TO WI-FI- Connection via QR Code

After installing the app and creating an account:

1. On your mobile device, make sure the ENGO Smart has access to permissions (Location, Bluetooth, Nearby devices). Then turn on Bluetooth and Location. Connect to 2.4GHz Wi-Fi network to which you want to assign the device.
2. Make sure the camera is powered on. Then press and hold the button on the back of the camera for approximately 5 seconds, until the beep. The blue LED on the front of the unit will then start flashing. The pairing mode is enabled.



3. In the app, select: „Add Device”.
4. Select „Camera & Lock”.
5. Find and click on the Wi-Fi camera in the device list



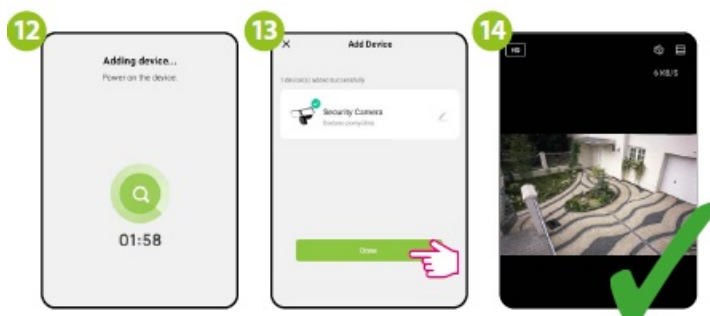
Follow the instructions displayed on the smartphone screen.

6. Then go „Next”.

7. Select the Wi-Fi network in which the camera will operate and enter the password of this network.
8. Point the camera at the QR code displayed in the app, click „I heard the sound” after the beep.



9. Wait for the app to configure the device with the selected Wi-Fi network.
10. Go „DONE”.
11. Go „DONE”.
12. The camera has been installed and displays the main interface.



## Factory reset

To restore the default settings of the camera, hold down the Reset button for about 5 seconds until a beep sounds. Then release the button. The camera will restart, restore the default (factory) settings and be ready to be added to the application again.

## Documents / Resources

	<a href="#">ENGO CONTROLS ECAM-L2 WiFi Smart Floodlight Camera</a> [pdf] User Guide ECAM-L2, ECAM-L2 WiFi Smart Floodlight Camera, ECAM-L2, WiFi Smart Floodlight Camera, Smart Floodlight Camera, Floodlight Camera, Camera
--	---

## References

- [ENGO Controls - Sterowanie ogrzewaniem](#)
- [User Manual](#)

[Manuals+](#), [Privacy Policy](#)

This website is an independent publication and is neither affiliated with nor endorsed by any of the trademark owners. The "Bluetooth®" word mark and logos are registered trademarks owned by Bluetooth SIG, Inc. The "Wi-Fi®" word mark and logos are registered trademarks owned by the Wi-Fi Alliance. Any use of these marks on this website does not imply any affiliation with or endorsement.