



[Home](#) » [ENGO CONTROLS](#) » **ENGO CONTROLS ECAM 2 Way Audio Smart Camera**

User Guide



Contents [[hide](#)]

- [1 ENGO CONTROLS ECAM 2 Way Audio Smart Camera](#)
- [2 Product Usage Instructions](#)
- [3 Technical specification](#)
- [4 Product Compliance](#)
- [5 Introduction](#)
- [6 Product features](#)
- [7 Safety information](#)
- [8 Camera description](#)
- [9 Inserting a memory card](#)
- [10 Factory reset](#)
- [11 FAQs](#)
- [12 Documents / Resources](#)
 - [12.1 References](#)



ENGO CONTROLS ECAM 2 Way Audio Smart Camera



Technical Specifications

- **Power supply:** 5V DC USB Type C
- **Communication:** Wi-Fi 2.4GHz
- **Resolution:** 4 Mpx 2560*1440P
- **Storage:** TF (micro SD) card not included (Max to 256GB)
- **Dimensions:** 72 x 108 mm

Product Description

The ECAM Smart Camera is a component of the ENGO Smart system designed for visual monitoring of premises. It offers high-quality images, various viewing angles, motion detection, and more.

Product Features

- 4Mpx 2560*1440P resolution
- 2-way audio
- Motion detection
- Move tracking
- Electronic nanny function
- WDR technology for image optimization
- Possibility to create automation and scenarios in the ENGO Smart application

Safety Information

Use the camera according to national and EU regulations.

Keep the device dry and use it indoors only. Refer to the manual for proper installation and use.

Product Usage Instructions

Inserting a Memory Card

Slide the black part of the camera in the direction the arrow indicates. Insert the micro SD card into the slot until you hear a click.

Step 1 – Download the ENGO Smart App

Download and install your smartphone's ENGO Smart app from Google Play or the Apple App Store.

Step 2 – Register a New Account

1. Click "Sign Up" to create a new account.
2. Enter your email address for the verification code.
3. Enter the verification code received in the email within 60 seconds.
4. Set the login password.

Step 3 – Connect Camera to Wi-Fi

1. Ensure the ENGO Smart app has the necessary permissions (Location, Bluetooth).
2. Turn on Bluetooth and Location on your smartphone.
3. Connect to a 2.4GHz Wi-Fi network.
4. Powder on the camera and hold the button on the back for 5 seconds until pairing mode is enabled.

Connection via QR Code

1. Ensure the ENGO Smart app has the necessary permissions (Location, Bluetooth).

2. Turn on Bluetooth and Location on your smartphone.
3. Connect to a 2.4GHz Wi-Fi network.
4. Powder on the camera and hold the button on the back for 5 seconds until pairing mode is enabled.

Technical specification

Power supply	5V DC USB Type C
Communication	Wi-Fi 2.4GHz
Resolution	4Mpx 2560*1440P
Storage	TF (micro SD) card not included (Max to 256GB)
Dimension [mm]	Φ72 x 108




Product Compliance









- This product complies with the following EU Directives: 2014/53/EU, 2011/65/EU.

Introduction

- The smart camera is a component of the ENGO Smart system. It is used for visual monitoring of the premises.
- **It provides convenient control of high-quality images:** panorama, different viewing angles (camera tilt degrees), zoom, horizontal and vertical rotation.
- It is programmed and operated in the ENGO Smart mobile app. It enhances the security of the supervised premises.

Product features

-  4Mpx 2560*1440P
-  2-way audio
-  Motion detection

-  Move tracking
-  Infrared (IR) up to a distance of 10m
-  Pan-tilt-zoom (PTZ), horizontal 355°, vertical 110°
-  Angle of lance 108°
-  Electronic nanny function
-  WDR technology (optimizing image exposure)
-  vertical/horizontal installation
-  Possibility to create automation and scenarios in the ENGO Smart application

Safety information

- Use in accordance with national and EU regulations. Use the device only as intended, keeping it in a dry condition.
- The product is for indoor use only. Please read the entire manual before installation or use.

Camera description



1. Microphone
2. Camera lens
3. LED diode
4. IR illumination
5. Micro SD slot
6. Loudspeaker
7. USB Type-C power socket
8. Reset button

Inserting a memory card

Slide the black part of the camera in the direction indicated by the arrow. Slide the card into the micro SD card slot until you hear a click.



Installation of the camera in the app

Make sure your router is within range of your smartphone. Make sure you are connected to the Internet. This will reduce the pairing time of the device.

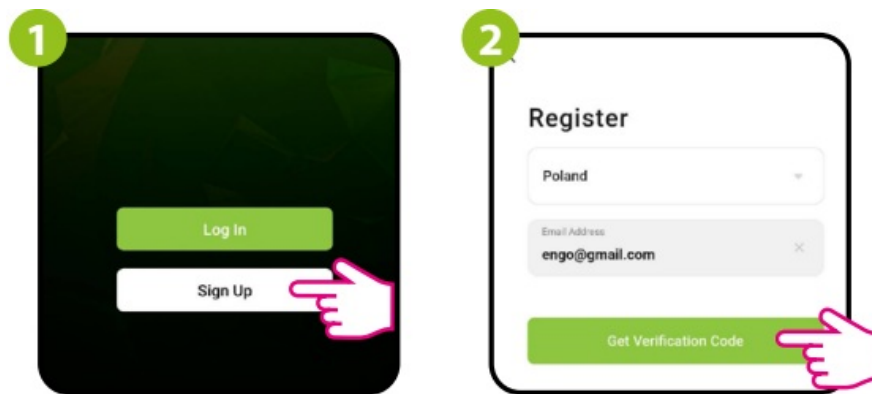
1. STEP1 – DOWNLAD ENGO SMART APP

- Download the ENGO Smart app from Google Play or the Apple App Store and install it on your smartphone.

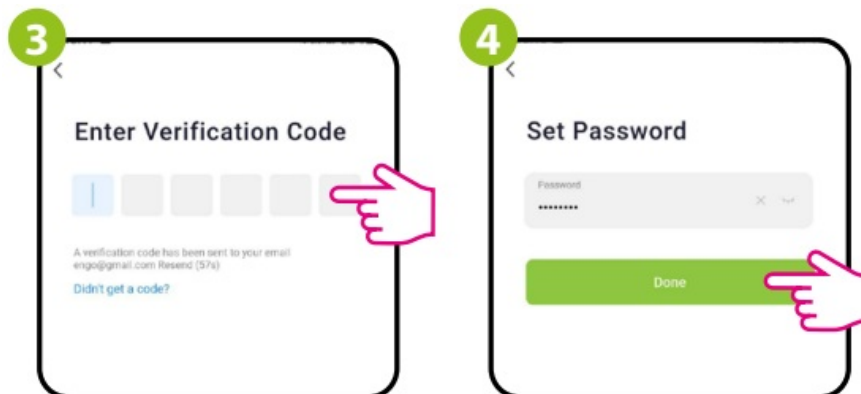


2. STEP 2 – REGISTER THE NEW ACCOUNT

- To register a new account, please follow the steps below.



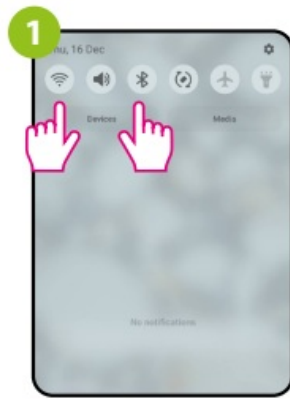
- Click „Sign Up” to create a new account.
- Enter your e-mail address to which the verification code will be sent.



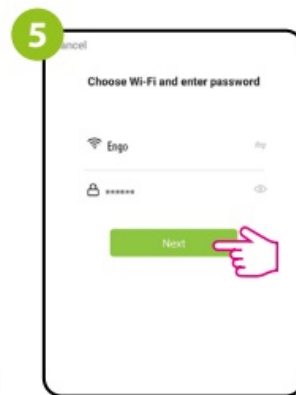
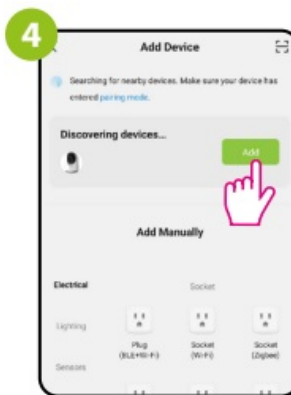
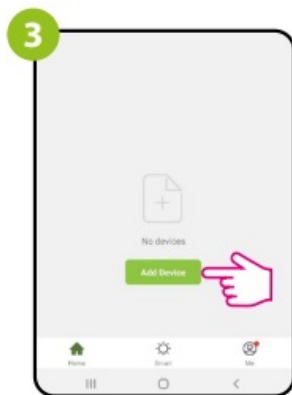
- Enter the verification code received in the email. Remember that you only have 60 seconds to enter the code!
- Then set the login password.

3. STEP 3A – CONNECT CAMERA TO WI-FI- Connection via Bluetooth

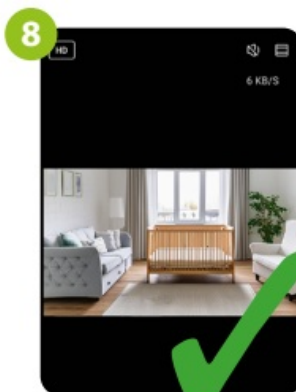
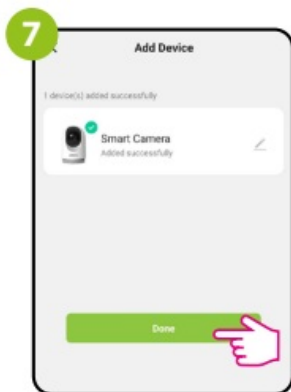
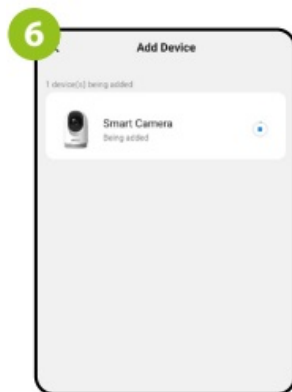
- After installing the app and creating an account.
- On your mobile device, make sure the ENGO Smart has access to permissions (Location, Bluetooth, Nearby devices).
- Then turn on Bluetooth and Location. Connect to the 2.4GHz Wi-Fi network to which you want to assign the device.
- Make sure the camera is powered on. Then press and hold the button on the back of the camera for approximately 5 seconds, until the beep.
- The blue LED on the front of the unit will then start flashing. The pairing mode is enabled.



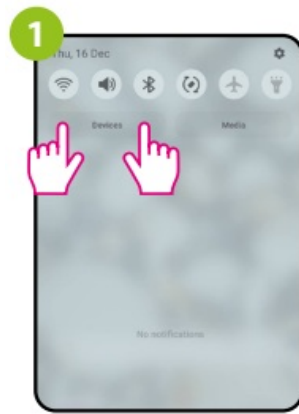
- In the app, select: Add Device”.
- After finding the camera, go to „Add”
- Select the Wi-Fi network on which the camera will operate and enter the password of this network.



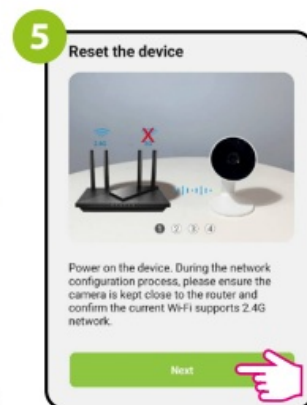
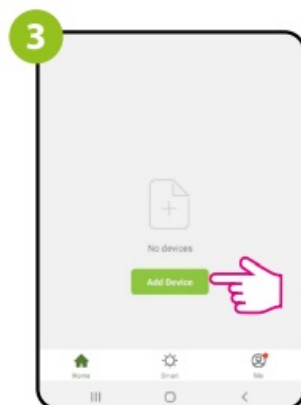
- Wait for the app to configure the device with the selected Wi-Fi network.
- Go „DONE”.
- The camera has been installed and displays the main interface.



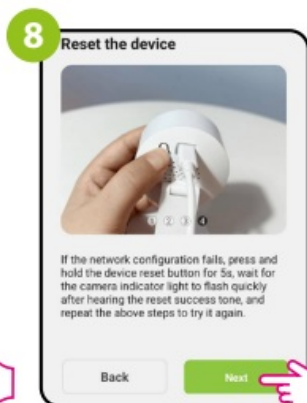
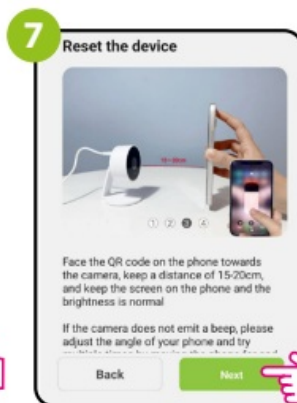
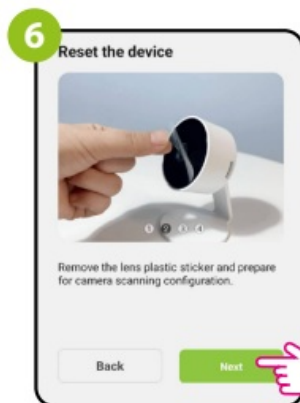
- **STEP 3B – CONNECT CAMERA TO WI-FI- Connection via QR Code**
- After installing the app and creating an account



- On your mobile device, make sure the ENGO Smart has access to permissions (Location, Bluetooth, Nearby devices).
- Then turn on Bluetooth and Location. Connect to the 2.4GHz Wi-Fi network to which you want to assign the device.
- Make sure the camera is powered on.
- Then press and hold the button on the back of the camera for approximately 5 seconds, until the beep. The blue LED on the front of the unit will then start flashing. The pairing mode is enabled.



- **In the app, select: Add Device”.**
- Find and click on the Wi-Fi camera in the device list.
- Then go „Next”.

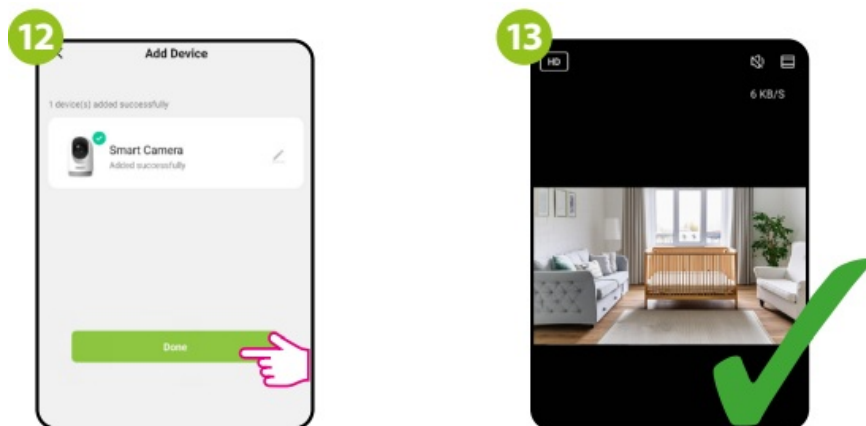


- Follow the instructions displayed on the smartphone screen.
- **STEP 3B – CONNECT CAMERA TO WI-FI- Connection via QR Code**

- Select the Wi-Fi network in which the camera will operate and enter the password of this network.
- Point the camera at the QR code displayed in the app, click „I heard the sound” after the beep.
- Wait for the app to configure the device with the selected Wi-Fi network.



- Go „DONE”.
- The camera has been installed and displays the main interface.



Factory reset


- To restore the default settings of the camera, hold down the Reset button for about 5 seconds until a beep sounds. Then release the button.
- The camera will restart, restore the default (factory) values, and be ready to be added to the application again.




Producer:


- Engo Controls sp. z o.o. sp. k. Rolna 4 St. 43-262 Kobielice Poland
- www.engocontrols.com


Works with


 **ENGO SMART App**


Powered By




 GET IT ON
Google Play



 Available on the
App Store

 **Hey Google**


works with



FAQs

- **Q: Can I use a micro SD card larger than 256GB?**
 - **A:** No, the camera supports a maximum of a 256GB micro SD card for storage.
- **Q: Is the camera suitable for outdoor use?**
 - **A:** No, the camera is designed for indoor use only.

Documents / Resources

	ENGO CONTROLS ECAM 2 Way Audio Smart Camera [pdf] User Guide ECAM 2 Way Audio Smart Camera, ECAM, 2 Way Audio Smart Camera, Audio Smart Camera, Smart Camera
---	---

References

- [User Manual](#)

■ ENGO

CONTROLS

◆ 2 Way Audio Smart Camera, Audio Smart Camera, ECAM, ECAM 2 Way Audio Smart Camera, ENGO CONTROLS, Smart Camera

—Previous Post

[ENGO CONTROLS ELS ZigBee Water Leak Sensor User Guide](#)

—

Leave a comment

Your email address will not be published. Required fields are marked *

Comment *

Name

Email

Website

☐ Save my name, email, and website in this browser for the next time I comment.

Post Comment

[Manuals+](#), [Privacy Policy](#) | [@manuals.plus](#) | [YouTube](#)

This website is an independent publication and is neither affiliated with nor endorsed by any of the trademark owners. The "Bluetooth®" word mark and logos are registered trademarks owned by Bluetooth SIG, Inc. The "Wi-Fi®" word mark and logos are registered trademarks owned by the Wi-Fi Alliance. Any use of these marks on this website does not imply any affiliation with or endorsement.