

[Skip to content](#)

Manuals+

User Manuals Simplified.



EnGenius Wireless Distribution System User Guide

[Home](#) » [EnGenius](#) » EnGenius Wireless Distribution
System User Guide 

Contents

[1 EnGenius Wireless Distribution System](#)

[2 Product Information](#)

[3 Product Usage Instructions](#)

[4 Master Device](#)

[5 Remote Device](#)

[6 Documents / Resources](#)

[7 Related Posts](#)



EnGenius Wireless Distribution System



Product Information

The product is a Wireless Distribution System that can function as an Access Point, Station, or Master Device. It operates on the 5GHz frequency and supports WDS AP and WDS Station modes. The product also supports WPA2-Personal security mode and has a maximum data rate based on IEEE 802.11 standards.

Product Usage Instructions

1. Go to the Wireless section under Network and uncheck the Green box.
2. Select USA from the drop-down menu of Country/Region.
3. Set Channel HT to 20 MHz and select a channel from 149 to 165.
4. Set the transmission power to 22 dBm if the distance is under 500ft or 26 dBm if the distance is over 700ft.
5. Go to Wireless Settings and tap Edit.
6. Set the SSID for the device.
7. Select WPA2-Personal under Security Mode.
8. Set the Passphrase for the device.
9. Tap Save to continue and then tap Save to apply all configuration changes.
10. Tap Scan for AP Detection to search for the 5GHz MAC Address of the Master Device.
11. Double-tap on the MAC Address of the Master Device (highlighted).
12. Enter the Passphrase of SSID for the Master Device and tap Save to continue.
13. Select Station from the drop-down menu of Operation Mode.
14. Uncheck the Green box.
15. Set the transmission power to 22 dBm if the distance is under 500ft or 26 dBm if the distance is over 700ft.
16. Tap Apply to continue and then tap Apply to continue again.

Note: Actual throughput and range may vary depending on the distance between devices or traffic and bandwidth load in the network.

Master Device



EnGenius® English

ENH500-AX AX3600 Dual Band Indoor Ceiling Mount Access Point Changes: 0 Reset Logout

Overview	Device Information
Device Status	Device Name: ENH500-AX_Remote
Connections	Serial Number: 22B0XC411WH3
Realtime	MAC Address:
Network	- LAN: 88:DC:97:13:39:B0
Basic	- Wireless LAN - 5GHz: 88:DC:97:13:39:B2
Wireless	Country: USA
Management	Current Local Time: Fri Apr 28 19:23:07 2023
Advanced	Uptime: 2d 0h 50m 9s
Time Zone	Firmware Version: v3.10.1_c
WiFi Scheduler	

1. Go to “Wireless” under “Network”
2. Uncheck the “Green” box
3. Select “USA” from the drop-down menu of “Country/Region”
4. Set Channel HT to 20 MHz, and select a channel from 149 to 165
5. Set 22 dBm if the distance is under 500ft or 26 dBm if the distance is over 700ft

Overview	Wireless Settings	
Device Status	Device Name	ENH500-AX_Remote
Connections	Country / Region	USA
Realtime		
Network	5GHz (ax/ac/n/a)	
Basic	Operation Mode	Access Point <input checked="" type="checkbox"/> Green
Wireless	WDS	<input checked="" type="radio"/> Enable <input type="radio"/> Disable
Management	Channel HT Mode	80MHz
Advanced	Channel	Configuration
Time Zone	Transmit Power	Auto
WiFi Scheduler	Bit Rate	Configuration
Tools	Client Limits	<input checked="" type="radio"/> Enable <input type="radio"/> Disable
System Manager		127
Account	RSSI Threshold	<input type="radio"/> Enable <input checked="" type="radio"/> Disable
Firmware		-85 dBm
Log		(Range: -60dBm ~ -100dBm)
	AP Delection	Scan
	Distance (0-30km)	1 (0.6miles)

6. Go to “Wireless Setting”

Wireless Settings - Access Point

Enabled	SSID	2.4GHz	5GHz	Edit	Security	Guest Network	VLAN ID
<input checked="" type="checkbox"/>	EnGenius1339B2_1	<input type="checkbox"/>	<input checked="" type="checkbox"/>	Edit	None	<input type="checkbox"/>	-
<input type="checkbox"/>	EnGenius1339B2_2	<input type="checkbox"/>	<input type="checkbox"/>	Edit	None	<input type="checkbox"/>	-
<input type="checkbox"/>	EnGenius1339B2_3	<input type="checkbox"/>	<input type="checkbox"/>	Edit	None	<input type="checkbox"/>	-
<input type="checkbox"/>	EnGenius1339B2_4	<input type="checkbox"/>	<input type="checkbox"/>	Edit	None	<input type="checkbox"/>	-
<input type="checkbox"/>	EnGenius1339B2_5	<input type="checkbox"/>	<input type="checkbox"/>	Edit	None	<input type="checkbox"/>	-
<input type="checkbox"/>	EnGenius1339B2_6	<input type="checkbox"/>	<input type="checkbox"/>	Edit	None	<input type="checkbox"/>	-
<input type="checkbox"/>	EnGenius1339B2_7	<input type="checkbox"/>	<input type="checkbox"/>	Edit	None	<input type="checkbox"/>	-
<input type="checkbox"/>	EnGenius1339B2_8	<input type="checkbox"/>	<input type="checkbox"/>	Edit	None	<input type="checkbox"/>	-

7. Tap "Edit"
8. Set SSID
9. Select "WPA2-Personal" under "Security Mode"
10. Set the Passphrase

Wireless Setting - Access Point's SSID

Enable	<input checked="" type="checkbox"/> 5G
SSID	<input type="text"/>
Hidden SSID	<input type="radio"/> Enable <input checked="" type="radio"/> Disable
Client Isolation	<input type="radio"/> Enable <input checked="" type="radio"/> Disable
VLAN Isolation	<input type="radio"/> Enable <input checked="" type="radio"/> Disable
	ID: <input type="text"/> (1~4094)
L2 Isolation	<input type="radio"/> Enable <input checked="" type="radio"/> Disable

Wireless Security

Security Mode	<input type="text" value="None"/>
---------------	-----------------------------------

Wireless Security

Security Mode	<input type="text" value="WPA2-Personal"/>
Encryption	<input type="text" value="AES"/>
Passphrase	<input type="text"/>
Group Key Update Interval	<input type="text" value="3600"/> (30~3600; 0:Disable)

11. Tap "Save" to continue
12. Tap "Save" to apply all configuration change

Wireless Security

Security Mode	WPA2-Personal	
Encryption	AES	
Passphrase	<input type="text"/>	
Group Key Update Interval	3600	(30~3600; 0:Disable)

Management VLAN Settings

Status ☐ Enable ☒ Disable 4094

Caution: If you encounter disconnection issue during the configuration process, verify that the switch and the DHCP server can support the new VLAN ID and then connect to the new IP address.

Remote Device



1. Select "Station" from the drop-down menu of Operation Mode
2. Uncheck the box of "Green"
3. Set 22 dBm if the distance is under 500ft or 26 dBm if the distance is over 700ft

EnGenius®

English

ENH500-AX AX3600 Dual Band Indoor Ceiling Mount Access Point

Changes: 0 Reset Logout

Overview	Wireless Settings
Device Status	Device Name ENH500-AX_Remote
Connections	Country / Region USA
Realtime	
Network	
Basic	
Wireless	
Management	
Advanced	
Time Zone	
WiFi Scheduler	
Tools	
System Manager	
Account	
Firmware	
Log	

Operation Mode	5GHz (ax/ac/n/a)
WDS	Station <input type="checkbox"/> Green <input checked="" type="checkbox"/>
Channel HT Mode	80MHz
Channel	Configuration
Transmit Power	Auto
Bit Rate	Configuration
Client Limits	Enable <input type="radio"/> Disable <input checked="" type="radio"/>
RSSI Threshold	127
AP Detection	Enable <input type="radio"/> Disable <input checked="" type="radio"/>
Distance (0-30km)	-85 dBm (Range: -60dBm ~ -100dBm)
	Scan
	1 (0.6miles)

4. Tap "Scan" for AP Detection. Search for the 5GHz MAC Address of the Master Devices

5. Double tap for the MAC Address of 5GHz MAC Address of the Master Device (highlighted)

Site Survey						
BSSID	SSID	Channel	Signal Level	Type	Security	Mode
88:DC:96:6D:A7:41	EnGenius6DA740_1	149	-69 dBm	11ac	None	Master
88:DC:96:4F:C3:D0		36	-81 dBm	11ac	None	Master
88:DC:96:6E:43:56		40	-60 dBm	11ah	None	Master
8E:DC:97:17:F3:DC	Invitados	161	-6 dBm	11ax	None	Master
88:DC:96:86:24:A7	EnGenius8624A6_1	44	-75 dBm	11ax	None	Master
88:DC:97:04:AD:4A	EnGenius Staff	153	-71 dBm	11ax	WPA2-PSK	Master
8E:DC:97:04:B5:D2	EnGenius Staff	48	-87 dBm	11ax	WPA2-PSK	Master
80:DC:97:04:AE:1A	EnGenius Staff	40	-75 dBm	11ax	WPA2-PSK	Master
88:DC:97:13:39:B2	EnGenius Wi-Fi 6 PnP Bridge	161	-5 dBm	11ax	WPA2-PSK	Master
88:DC:96:5A:98:DF		36	-88 dBm	11ah	WPA2-PSK	Master
88:DC:97:04:B0:32	EnGenius Staff	40	-73 dBm	11ax	WPA2-PSK	Master
A8:6B:AD:F2:A7:B7	WiFiSpectrum-5G	161	-68 dBm	11ac	WPA2-PSK	Master
C2:D2:F3:25:75:F8		153	-55 dBm	11ah	WPA2-PSK	Master
80:DC:97:04:AB:3E	EnGenius Staff	161	-49 dBm	11ax	WPA2-PSK	Master

Repeat scan

6. Enter the Passphrase of SSID for the Master device

7. Tap "Save" to continue

Wireless Security

Security Mode

WPA2-Personal

Encryption

AES

Passphrase

Save

Save current setting(s)

8. Tap "Apply" to continue

9. Tap "Apply" to continue

Management VLAN Settings

Status ☐ Enable ☒ Disable 4094

Caution: If you encounter disconnection issue during the configuration process, verify that the switch and the DHCP server can support the new VLAN ID and then connect to the new IP address.

Save

Save current setting(s)

Waiting for changes to be applied (7)

Apply

Revert

Configuration / Changes

Legend:

■ Section added ■ Section removed ■ Option changed ■ Option removed

```
network.lan
network.lan.hostname=ENH500-AX_Remote

wireless.wifi1
wireless.wifi1.ath_count=0
wireless.wifi1.obeyregpower=0
wireless.wifi1.opmode=sta
wireless.wifi1.rate=0x0

wireless.wifi1_sta
wireless.wifi1_sta.encryption=psk2+ccmp
wireless.wifi1_sta.ieee80211w=1
wireless.wifi1_sta.key=eddie9230
wireless.wifi1_sta.pwe=0
wireless.wifi1_sta.sae=0
wireless.wifi1_sta.security=psk2+ccmp
wireless.wifi1_sta.ssid=FiXpress
wireless.wifi1_sta.wds=1

dhcp.cfg02411c
dhcp.cfg02411c.domain=ENH500-AX_Remote

snmpd.cfg11e48a
snmpd.cfg11e48a.sysName=ENH500-AX_Remote

system.cfg02e48a
system.cfg02e48a.SystemName=ENH500-AX_Remote
```

Apply

Revert

- **EnGenius Technologies:** 1580 Scenic Ave. Costa Mesa, CA 92626
- **Email:** partners@engeniustech.com.
- **Website:** engeniustech.com.

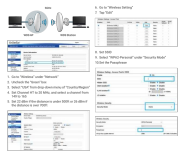
- **Version:** 05/2023

Maximum data rates are based on IEEE 802.11 standards. Actual throughput and range may vary depending on the distance between devices or traffic and bandwidth load in the network. Features and specifications are subject to change without notice. Trademarks and registered trademarks are the property of their respective owners. **For United States of America:** Copyright ©2023 EnGenius Technologies, Inc. All rights reserved. Access Point & Station Quick Start Guide

Documents / Resources



Wireless Distribution System



[EnGenius Wireless Distribution System \[pdf\] User Guide](#)

Wireless Distribution System, Wireless Distribution, Distribution, Distribution System

[Manuals+](#),