



EnGenius ECP212-INT Cloud Managed Switchable Smart PDU User Guide

[Home](#) » [EnGenius](#) » EnGenius ECP212-INT Cloud Managed Switchable Smart PDU User Guide 



PDU 12P 10A 200-240V

Cloud Managed 2U 10A Smart PDU with 12 Metered Outlets (ECP212-INT)

Contents

- [1 Introduction](#)
- [2 Package Contents](#)
- [3 System Requirements](#)
- [4 Network Requirements](#)
- [5 Hardware Overview](#)
- [6 LEDS](#)
- [7 Documents / Resources](#)
 - [7.1 References](#)

Introduction

This Quick Start Guide is designed to guide you through installing the PDU 12P 10A 200-240V, model ECP212-INT, including hardware mounting and configuration.



PDU 12P 10A 200-240V

Cloud Managed 2U 10A Smart PDU with 12 Metered Outlets

Model: ECP212-INT

Function

- Real-time power consumption monitoring and alarming per outlet
- Remote switching per outlet
- 1.3 inches display for visualizing power information

- Attempt to reconnect from internet outages automatically
- Local and cloud management with analytic reports
- Bracket ears provide different angle installation

Safety

- 12A circuit breaker from overloading protection
- Fireproof MOV and grounded protection
- UL 62368-1, CE, RCM

Integration

- RESTFUL API supported
- SNMP v1 2c 3 supported

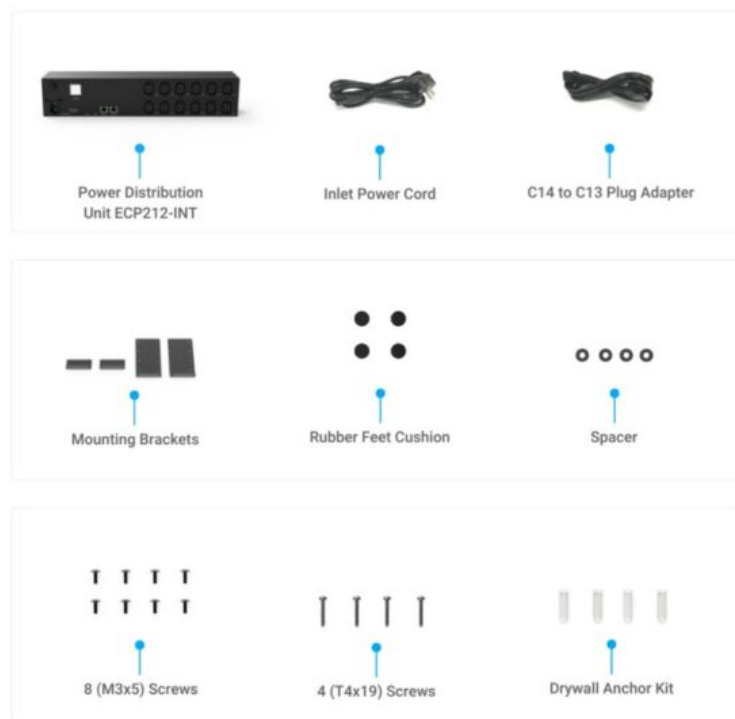
[Content Quick Links](#)

[Hardware Overview](#)

[Hardware Installation](#)

[Configure with EnGenius Cloud](#)

Package Contents



System Requirements

Web Browser:

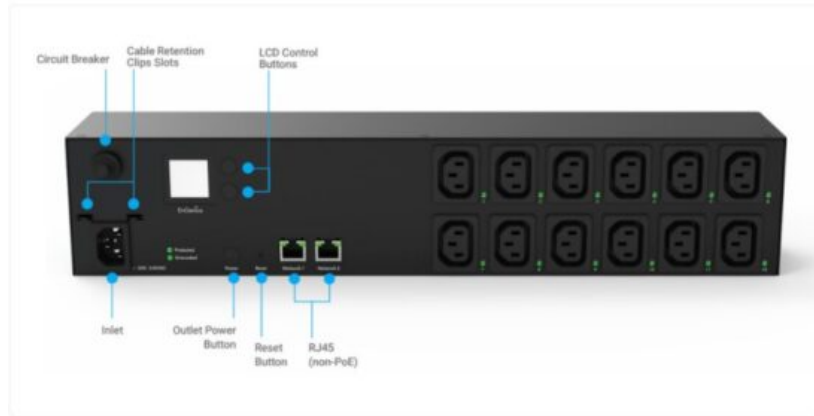
- Google Chrome (105.0.5195.127 or later)
- Microsoft Edge (112.0.1722.48 or later)

Network Requirements

Before you get started, please make sure your network environment is DHCP-enabled. EnGenius PDU is assigned with an IP address dynamically by the DHCP server. You could check the given IP address from PDU's LCD. The IP address is shown under Menu>information.

Hardware Overview

Ports



Reset to default:

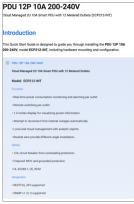
1. Press and hold the reset button for at least 15 seconds. Holding it for less than 15 seconds will only trigger a reboot. The system will restart automatically without any noticeable indication.
2. To initiate a factory reset, navigate to the LCD menu and select the “Factory reset” option. The screen will then indicate the resetting process with a progress bar.

LEDS

Location	LED Indicator	LED Color	LED Behavior	Status
Power	Outlet Switch	White	Solid On	Device On
		Off	Light Off (0.5 Sec)	Outlet Function On/Off
LED	Surge Protect	Green	Solid On	Protected
		Off	Light Off	Unprotected
	Grounded	Green	Solid On	Grounded
		Off	Light Off	Ungrounded
	Individual Outlet	Green	Solid On	Enabled
		Off	Light Off	Disabled
Ethernet Port	Left (Link Speed)	Green	Solid On	1000M
		Off	Light Off	100M/10M/No Link
	Right (Status)	Green	Solid On	Link
			Flashing	Transmit or Receive
		Off	Light Off	No Link



Documents / Resources

	<p>EnGenius ECP212-INT Cloud Managed Switchable Smart PDU [pdf] User Guide ECP212-INT, ECP212-INT Cloud Managed Switchable Smart PDU, ECP212-INT, Cloud Managed Switchable Smart PDU, Managed Switchable Smart PDU, Switchable Smart PDU, Smart PDU, PDU</p>
---	---

References

- [User Manual](#)

[Manuals+](#), [Privacy Policy](#)

This website is an independent publication and is neither affiliated with nor endorsed by any of the trademark owners. The "Bluetooth®" word mark and logos are registered trademarks owned by Bluetooth SIG, Inc. The "Wi-Fi®" word mark and logos are registered trademarks owned by the Wi-Fi Alliance. Any use of these marks on this website does not imply any affiliation with or endorsement.