



# ENFORCER SK-B111-PQ SL Access App User Guide

[Home](#) » [ENFORCER](#) » ENFORCER SK-B111-PQ SL Access App User Guide 

## Contents

- [1 ENFORCER SK-B111-PQ SL Access App](#)
- [2 Product Usage Instructions](#)
- [3 Getting Started](#)
- [4 Download and Install the App](#)
- [5 SL Access Home Screen](#)
- [6 Log In](#)
- [7 Basic Operation](#)
- [8 Auto Operation](#)
- [9 Settings](#)
- [10 Set Auto Proximity Range](#)
- [11 Troubleshooting](#)
- [12 Documents / Resources](#)
  - [12.1 References](#)
- [13 Related Posts](#)

***ENFORCER***®

**ENFORCER SK-B111-PQ SL Access App**



### Specifications:

- Product Name: SL Access
- Model: SK-B241-PQ (Various models available)
- Compatibility: Smartphone with SL Access app
- Proximity Card or Key Fob required
- Bluetooth Range: Approximately 60 feet (20m)

### Product Usage Instructions

#### Getting Started:

To get started, you will need a proximity card or key fob. Please check with your installer or administrator if these are available for use.

#### Download and Install the App:

To use the SL Access app, follow these steps:

1. Download the SL Access app from your phone's app store.
2. Install the app on your phone.

#### Notes:

- Be sure to set your smartphone to automatically download app updates to ensure you have the latest version of the app.
- The app will appear in your device's default language if available. If not supported, it will default to English.

#### SL Access Home Screen:

The SL Access home screen provides the following information:

- Login icon
- Device Name

- Settings icon
- Current Device Distance with a number showing
- Locked icon
- Auto selector
- Auto Proximity Range showing the current setting
- App version

#### **Notes:**

- On opening the app, you may receive a message asking you to enable Bluetooth. Bluetooth must be enabled to use the app, and the device must be in range.
- If the app continues to show “Searching...” at the top of the screen, move closer to the device. If the issue persists, try exiting and reopening the app.

#### **Choose the Desired Device:**

If your desired device is not shown at the top of the screen, follow these steps:

1. Click on the area where the desired device should appear.
2. In the popup, select the device you wish to log in to.

#### **Notes:**

- The device with the strongest signal will appear in black text at the top of the screen. If no device appears, move closer to the device.
- After selecting a device, the device name will change to a gold-colored font to indicate it has been specifically selected.

#### **Log In:**

To log in, follow these steps:

1. Click the Login icon in the top left corner of the screen.
2. Enter the User ID and Passcode assigned by your administrator.
3. Click Confirm.

#### **Notes:**

- After successful login, you will see the center icon moving and hear a short beep. A popup message will confirm that you are now logged in.
- Even after logging in, the Login icon will still be present with no visual indication of being logged in.
- If your device includes a keypad, you can also use your passcode to unlock the door. Simply type the passcode followed by the # key.

#### **Basic Operation:**

To perform basic operations, follow these steps:

1. Ensure that the correct device appears at the top of the home screen.
2. Press the center Locked button.

The icon will change to Unlocked, and the door will remain unlocked for the duration set by the administrator.

**Note:** The Unlocked icon will remain on the screen for about 5 seconds. The actual time that the door remains unlocked is set by the administrator and may not correspond to the icon's status.

#### **Auto Operation:**

For hands-free operation, follow these steps:

1. Open the SL Access app.
2. Select Auto from the bottom of the home screen.

The Auto setting automatically unlocks the door when your phone is within the set proximity range.

#### **FAQ:**

- Q: Is my personal information shared or uploaded to the cloud?  
No, SECO-LARM respects your privacy. No data or personal information is shared with SECO-LARM or any other party by the SL Access app. No data or personal information is uploaded to the cloud.
- Q: What should I do if the app continues to show "Searching..."?  
If the app continues to show "Searching..." at the top of the screen, try moving closer to the device. If the issue persists, exit and reopen the app.
- Q: How can I unlock the door using the keypad?  
If your device includes a keypad, you can use your passcode to unlock the door. Simply type the passcode followed by the # key.



SL Access

#### **SL Access™ App User Manual**

For ENFORCER Bluetooth® Access Controllers

Fully integrated Bluetooth® provides streamlined setup and management for managers and easy access for users. The Bluetooth® word mark and logos are registered trademarks owned by Bluetooth SIG, Inc. and any use of such marks by SECO-LARM is under license. Other trademarks and trade names are those of their respective owners.

**SLI™ SECO-LARM®**

#### **Getting Started**

**You need:**

- An ENFORCER® Bluetooth® Access Controller



SK-B241-PQ shown  
Various models available

- A smartphone equipped with Bluetooth® LE 4.0
- The SL Access app (supports iOS 11.0 and later or Android 5.0 and later)
- If your device includes a proximity reader, you may also use a proximity card or key fob. Ask your installer or administrator if these are available.

**PRIVACY:**

SECO-LARM respects your privacy. No data or personal information is shared with SECO-LARM or any other party by the SL Access app. No data or personal information is uploaded to the cloud.

For more information about SECO-LARM's privacy policy, visit [www.seco-larm.com/legal.html](http://www.seco-larm.com/legal.html)

**Download and Install the App**



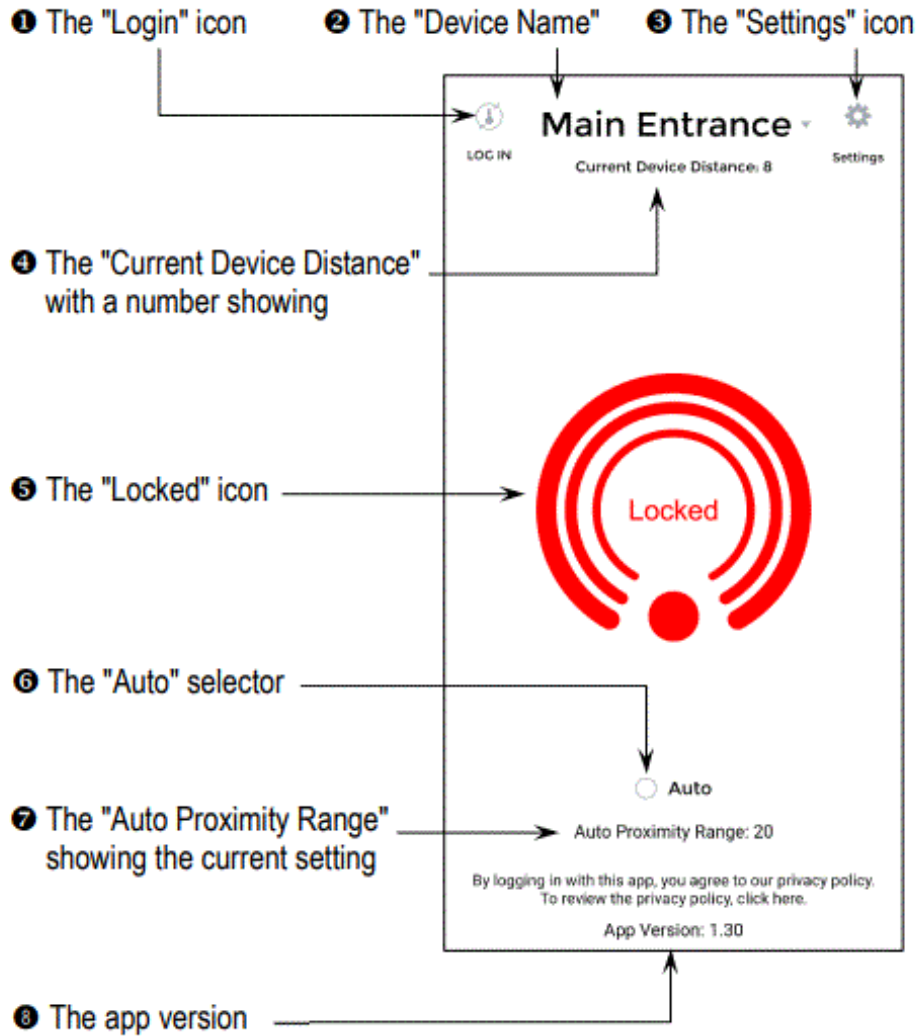
Download the SL Access app and install it on your phone.

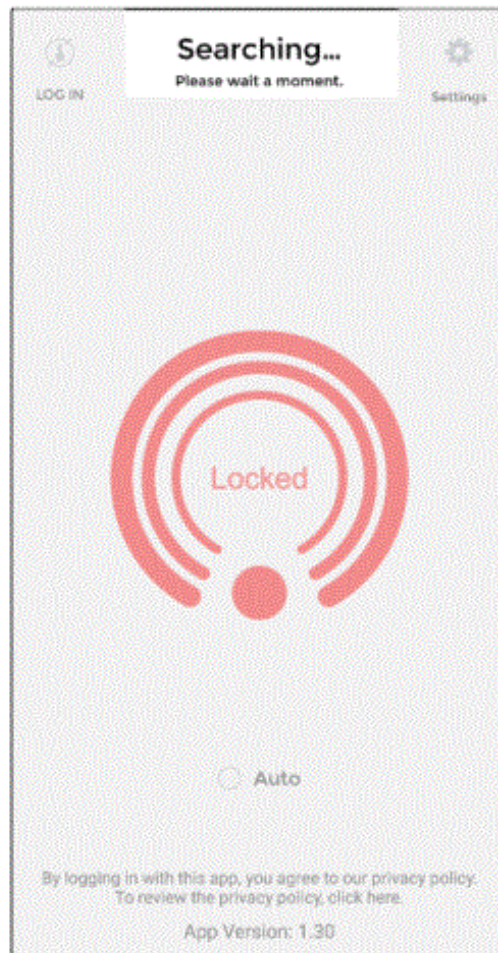
**NOTES:**

- a. Be sure to set your smartphone to automatically download app updates so that you always have the latest version of the app.
- b. The app will appear in your device's default language if available. If the app does not support your device language, it will default to English.

## SL Access Home Screen

On the home screen, you will see:



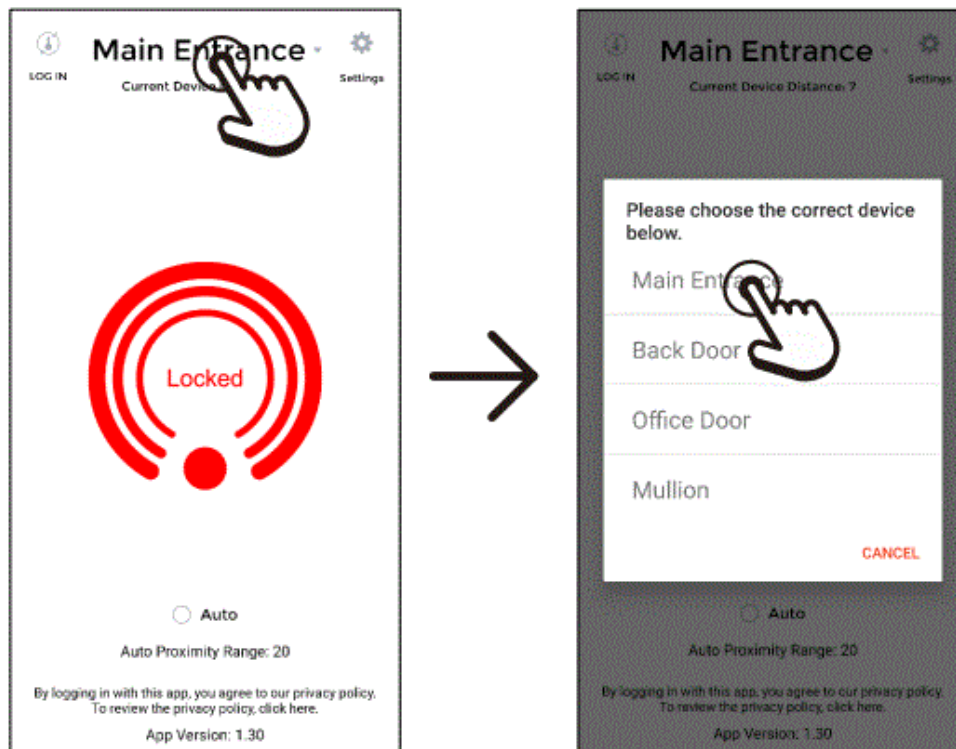


#### NOTES:

- a. On opening the app, you may get a message asking you to enable Bluetooth. Bluetooth must be enabled to use the app and the device must be in range.
- b. You may see the word “Searching...” at the top of the screen (see below). Bluetooth has a practical range of around 60 feet (20m), but may be less if there are obstacles or signal interference. Move closer to the device, but if it continues to show “Searching...,” you may need to exit and reopen the app.

#### Choose the Desired Device:





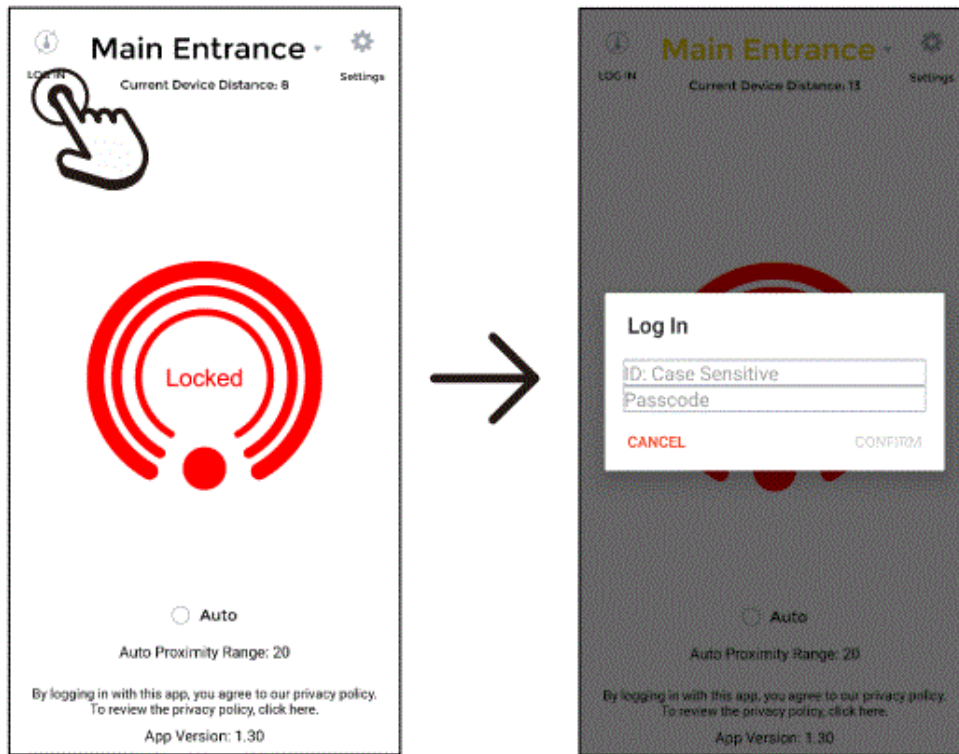
- If your desired device is not shown at the top of the screen, click that area.
- In the popup, select the device that you wish to log in to.

#### NOTES:

- a. The device with the strongest signal will appear in black text at the top of the screen. If no device appears, move closer to the device.
- b. After selecting a device, the device name will change to a gold-colored font to show that it has been specifically selected.



## Log In

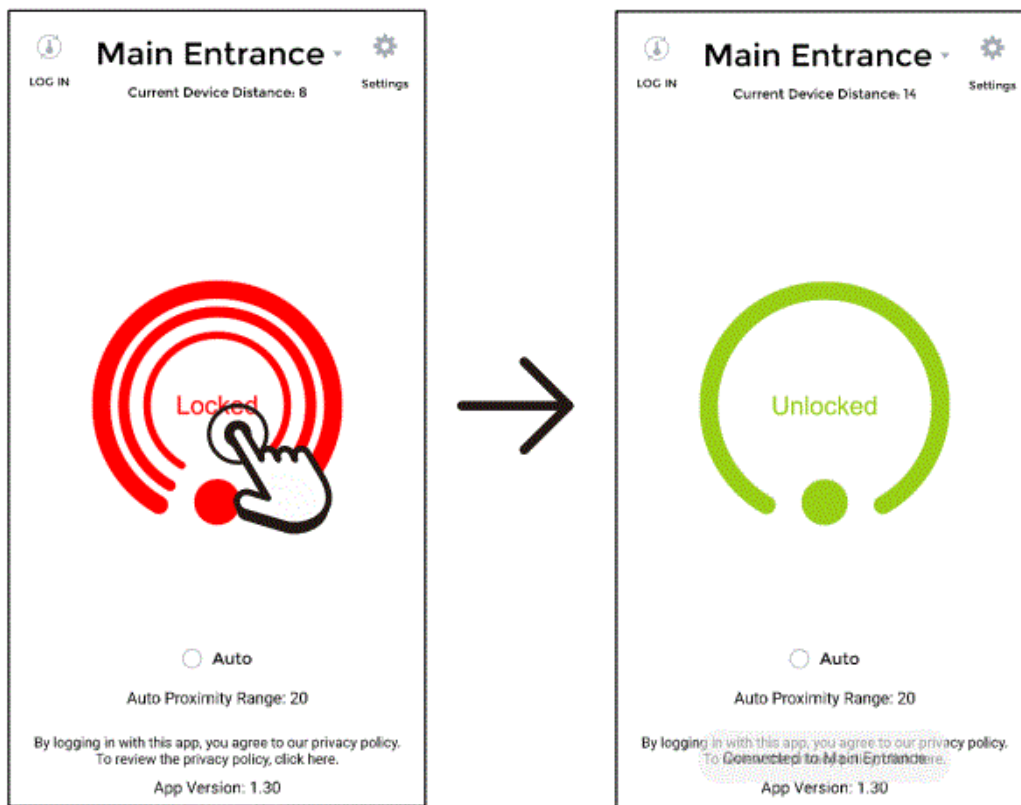


- Click the “Login” icon in the top left corner
- Enter the User ID and Passcode assigned by your administrator and click “Confirm”

### NOTES:

- a. You should see the center icon moving and a short beep with a popup saying “You are now logged in.”
- b. Even after you log in, the “Login” icon will still be present and there is no other indication that you are logged in.
- c. You can also use your passcode to unlock the door using the keypad if your device includes one. Simply type the passcode followed by the “#” key.

## Basic Operation

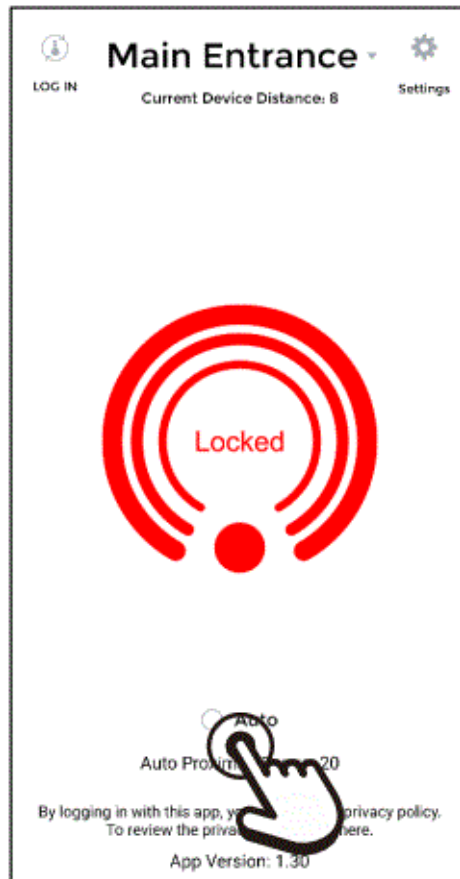


- Ensure that the correct device appears at the top of the home screen and press the center “Locked” button.
- The icon will change to “Unlocked,” and the door will remain unlocked for the duration set by the administrator.

**NOTE:** The “Unlocked” icon will remain on screen for about 5 seconds. The actual time that the door remains unlocked is set by the administrator and may not correspond to the icon’s status.

## Auto Operation

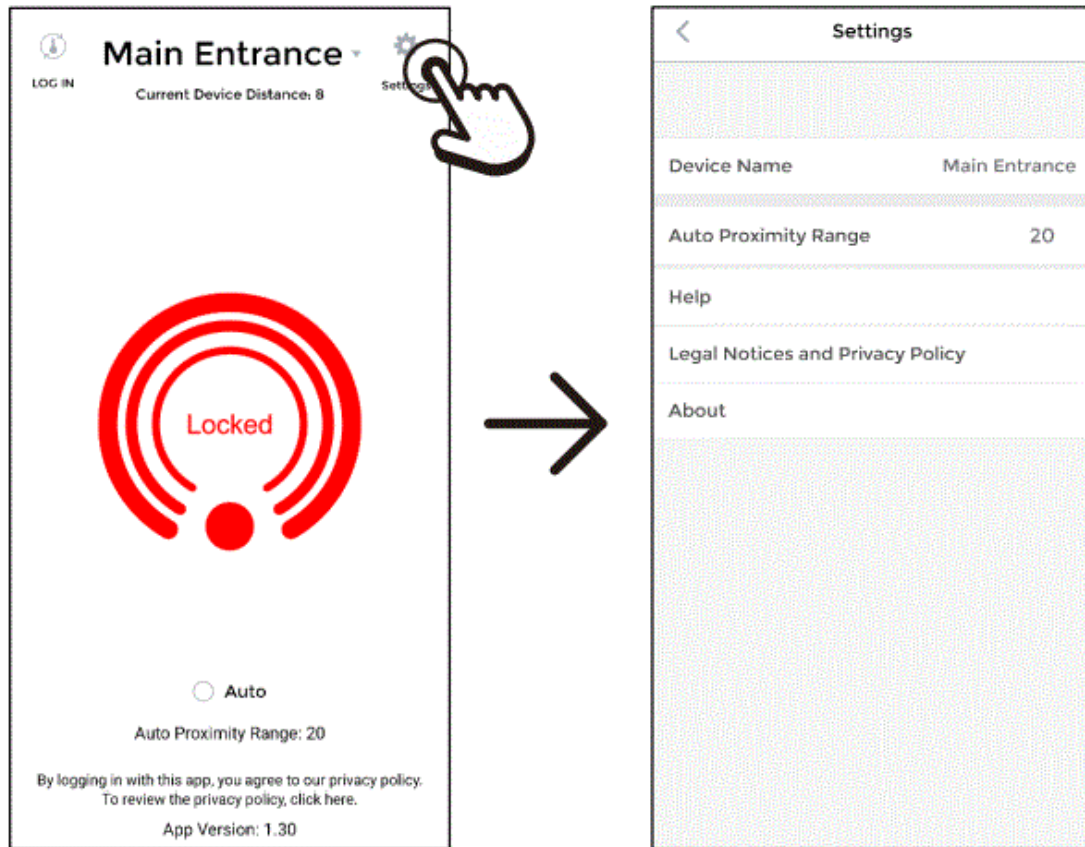
- For hands-free operation, open the app and select “Auto” from the bottom of the home screen.
- The “Auto” setting automatically unlocks the door when your phone is within the set proximity range.



## NOTES:

- a. You should see the center icon moving and hear a short beep with a popup saying "You are now logged in."
- b. The app must be loaded and your phone screen on for automatic unlocking.
- c. If you have more than one keypad/reader, ensure the correct one is connected.
- d. It is important that you adjust the proximity range for your particular phone and environment in the settings to avoid accidental unlocking (see next page).

## Settings



- Click on the “Settings” icon on the home page to open the settings page.
- Get access to help and other information and set the “Auto Proximity Range” here.

#### NOTES:

- a. The “Auto” button must be turned off to access the “Settings.”
- b. The “Help” link will take you to SECO-LARM’s website support page where you can download this manual or find other help.
- c. The “Legal Notices and Privacy Policy” takes you to SECO-LARM’s website.
- d. The “About” link shows SECO-LARM contact information and the app version.

#### Set Auto Proximity Range



- On the “Settings” page click on the “Auto Proximity Range” line.
- To set the “Auto Proximity Range,” click on and move the slider to the desired setting.

#### NOTES:

- a. The “Auto Proximity Range” applies only to the app’s “Auto Unlock” feature and does not affect the range of proximity cards/fobs.
- b. The “Current Device Distance” shows the distance as a relative number based on the current Bluetooth signal strength and may vary with different phones.
- c. Hold your phone at the approximate distance where you would like the device to automatically unlock and note the number for the “Current Device Distance.”
- d. Move the slider for the “Auto Proximity Range” to the number noted.

#### Troubleshooting

The Device area continues to say "Searching"	<ul style="list-style-type: none"> <li>• Make sure that your phone's Bluetooth is turned on.</li> <li>• Move closer to the device.</li> <li>• Close and restart the app.</li> </ul>
I can't log in	<ul style="list-style-type: none"> <li>• Make sure that you have typed your username correctly, including correct spaces and upper/lower case with no space after your username.</li> <li>• Make sure that you have entered the correct user code.</li> <li>• Contact your device administrator for help.</li> </ul>
The "Auto" unlock is not working	<ul style="list-style-type: none"> <li>• Ensure that you are within the set proximity range.</li> <li>• The app must be loaded, and the phone screen must remain on while approaching the device</li> </ul>


**NOTICE:** The SECO-LARM policy is one of continual development and improvement. For that reason, SECO-LARM reserves the right to change specifications without notice. SECO-LARM is also not responsible for misprints. All trademarks are the property of SECO-LARM U.S.A., Inc. or their respective owners. Copyright © 2023 SECO-LARM U.S.A., Inc. All rights reserved.

SECO-LARM ® U.S.A., Inc.

16842 Millikan Avenue, Irvine, CA 92606 Website: [www.seco-larm.com](http://www.seco-larm.com) Phone: (949) 261-2999 | (800) 662-0800

Email: [sales@seco-larm.com](mailto:sales@seco-larm.com)

## Documents / Resources

 <p><b>ENFORCER®</b> SL Access® App User Manual For ENFORCER Bluetooth® Access Controllers</p> <p>Fully integrated Bluetooth® provides convenient setup and management for managers and easy access for users</p> <p>SECO-LARM</p>	<p><b>ENFORCER SK-B111-PQ SL Access App</b> [pdf] User Guide</p> <p>SK-B111-PQ SL Access App, SK-B111-PQ SL, Access App, App</p>
---	--

## References

- [La Armería de Madrid - fabricantes de armas y rifles](#)
- [SECO-LARM USA Inc](#)
- [Privacy, Security, & Terms - SECO-LARM USA Inc](#)
- [User Manual](#)