



ENERMAX ELC-AQFA360-SQA Addressable RGB AIO Cooler User Manual

[Home](#) » [ENERMAX](#) » ENERMAX ELC-AQFA360-SQA Addressable RGB AIO Cooler User Manual 



AQUAFUSION ADV

Addressable RGB AIO Cooler



120|240|360 mm



Contents

- 1 Limited Warranty
- 2 Specification
- 3 Part List
- 4 Intel Installation
- 5 AMD Installation
- 6 Motherboard Sync
- 7 RGB Control Box
- 8 Noise Reducer
- 9 Installation
- 10 Documents / Resources
 - 10.1 References
- 11 Related Posts

Limited Warranty

Please read this limited warranty carefully. Warranty is subject to void under following criteria:

1. The serial number label or warranty seal is defaced, modified, or removed.
2. Taking apart of the product and/or modification of any component or cable without ENERMAX's written authorization.
3. Ignoring connector's faulty-insertion-prevention design by attaching a connector to a device under incorrect orientation.
4. Damage caused by natural phenomena or uncontrollable forces, such as lightning, flooding, fire, earthquake, or misuse, abuse, negligence, accident, wear and tear, mishandling, misapplication.
5. ENERMAX is only liable for limited warranty service of ENERMAX product. ENERMAX is not liable for other damage or loss of time, interest, commercial opportunity due to using defect product of ENERMAX.

This ENERMAX Technology Corporation product is warranted to be free from defects in material and workmanship for a period of two (2) years from the date of purchase.

ENERMAX Technology Corporation agrees to repair or replace the product, at its own option and at no charge, if, during the warranty period, it is returned to nearest ENERMAX Technology Corporation subsidiary/agent with all shipping charges prepaid and if inspection reveals that the product is defective. Please present the proof of purchase for requesting RMA. Charges for removing or installing the product are excluded under the terms of this warranty agreement. This warranty shall not apply to any product, which has been subject to connection to a faulty power source, alteration, negligence, or accident, or to any product, which has been installed other than in accordance with these instructions. In no event shall ENERMAX Technology Corporation, or its subsidiaries, or agents be liable for damages for a breach of warranty in an amount exceeding the purchase price of this product.

If you are uncertain whether or not your ENERMAX liquid cooler is defective, please contact your dealer/reseller for support!

Web Site: <http://www.enermax.com>

E-mail: enermax@enermax.com.tw

ENERMAX Technology Corporation, 2F-1, No. 888, Jing-Guo Road, Taoyuan City (330)

Tel. +886-3-316-1675, Fax. +886-3-346-6640

©2022 ENERMAX Technology Corporation. All rights reserved. Specifications are subject to change without prior notice. Actual product and accessories may differ from illustrations. Omissions and printing errors excepted.

Content of delivery might differ in different countries or areas. Some trademarks may be claimed as the property of others.

Reproduction in any manner without the written permission of ENERMAX is strictly forbidden.

Warranty & Support information For Australia

Our goods come with guarantees that cannot be excluded under the Australian Consumer Law.

You are entitled to a replacement or refund for a major failure and for compensation for any other reasonably foreseeable loss or damage.

You are also entitled to have the goods repaired or replaced if the goods fail to be of acceptable quality and the failure does not amount to a major failure. Please read the above limited warranty. This warranty is valid only for the ENERMAX products distributed by authorized dealer(s) in Australia.

Please contact ENERMAX for warranty and support information.

ENERMAX Technology Corporation 2F-1, No. 888, Jing-Guo Road, Taoyuan City (330) Tel. +886-3-316-1675

Web Site: <http://www.enermax.com>

E-mail: enermax@enermax.com.tw

This ENERMAX liquid cooler is warranted to be free from defects in material and workmanship for period stated in two(2) years. ENERMAX Technology Corporation agrees to repair or replace the product, at its own option and at no charge, if during the warranty period, it is returned to nearest ENERMAX Technology Corporation subsidiary/agent with all shipping charges prepaid and bearing a return merchandise authorization (RMA) number, and if inspection reveals that the product is defective. Charges for removing or installing the product are excluded under the terms of this warranty agreement. This warranty shall not apply to any product, which has been subject to connection to a faulty power source, alteration, negligence, or accident, or to any product, which has been installed other than in accordance with these instructions. In no event shall ENERMAX Technology Corporation, or its subsidiaries, or agents be liable for damages for a breach of warranty in an amount exceeding the purchase price of this product!

Unless stated in the manual, the standard product warranty period is described in two(2) years.

If the goods is found defective within the period of warranty from the date of purchase, please contact ENERMAX or your purchased retail shop/agent.

Please note that proof of purchase would be required when request the RMA.

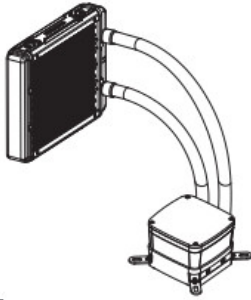
Specification

Model		ELC-AQFAI20-SQA ELC-AGFAI20-SQA-W	ELC-AQFA240-SQA ELC-AQFA240-SQA-W	ELC-AQFA360-SQA ELC-AQFA360-SQA-W
CPU socket		Intel® LGA 1700/1200/115)0066/2011/2011-3/1366 AMD® AmS/Am4/Am3+/Fm2+/Fm1		
Radiator Dimension		154 x 120 x 27mm	274 x 120 x 27 mm	394 x 120 x 27mm
Tube Length		400mm		
Material	Cold Plate	Copper		
	Radiator	Aluminum		
	Tube	Rubber		
Pump	Bearing	Ceramic Bearing		
	MTBF	50,000 hrs		
	Rated Voltage	12V		
	Rated Current	0.7A		
	Rated Current – RGB LED	0.42A (SV)		
Fan	Dimension	120 x 120 x 26 mm		
	MTTF	1' 100,000 hrs		
	Speed	500-2000 rpm		
	Rated Voltage	12V		
	Rated Current	0.38A		
	Rated Current -RGB LED	1.08A (SV)		
	Air Flow	39-79.8 CFM		
	Static Pressure	0.67-3.6 mm-H2O		
	Noise Level	15-32.6 dBA		
	Connector	4 Pin PWM + 3 Pin RGB (W/ extension adapter)		
Thermal Grease		Dow Corning® TC-5121C		

* Some motherboard put the capacitors around the boarder of CPU bracket, please carefully install the cooler on can avoid the mechanical interference.

Part List

A Cooler x 1



B Fan x 1



C Intel Back Plate x 1



D Position Screw x 4
(for Intel LGA1200/115x/1366)



E LGA1700
Position Screw x 4



F Stand-off x 4



G Case Screw x 8



H Fan Screw x 8



I Intel LGA
2011/2011-3/2066
Screw x 4



J Spring Screw x 4



K Washer x 4



L Intel Clip x 1



M AMD Clip x 1



N Bracket Screw x 4



O Thermal Grease x 1



P SATA Adapter x 1



Q RGB Control
Box x 1



R RGB Sync Cable x 1



S RGB Control Power
Cable (SATA) x 1



T GIGABYTE RGB
Adapter



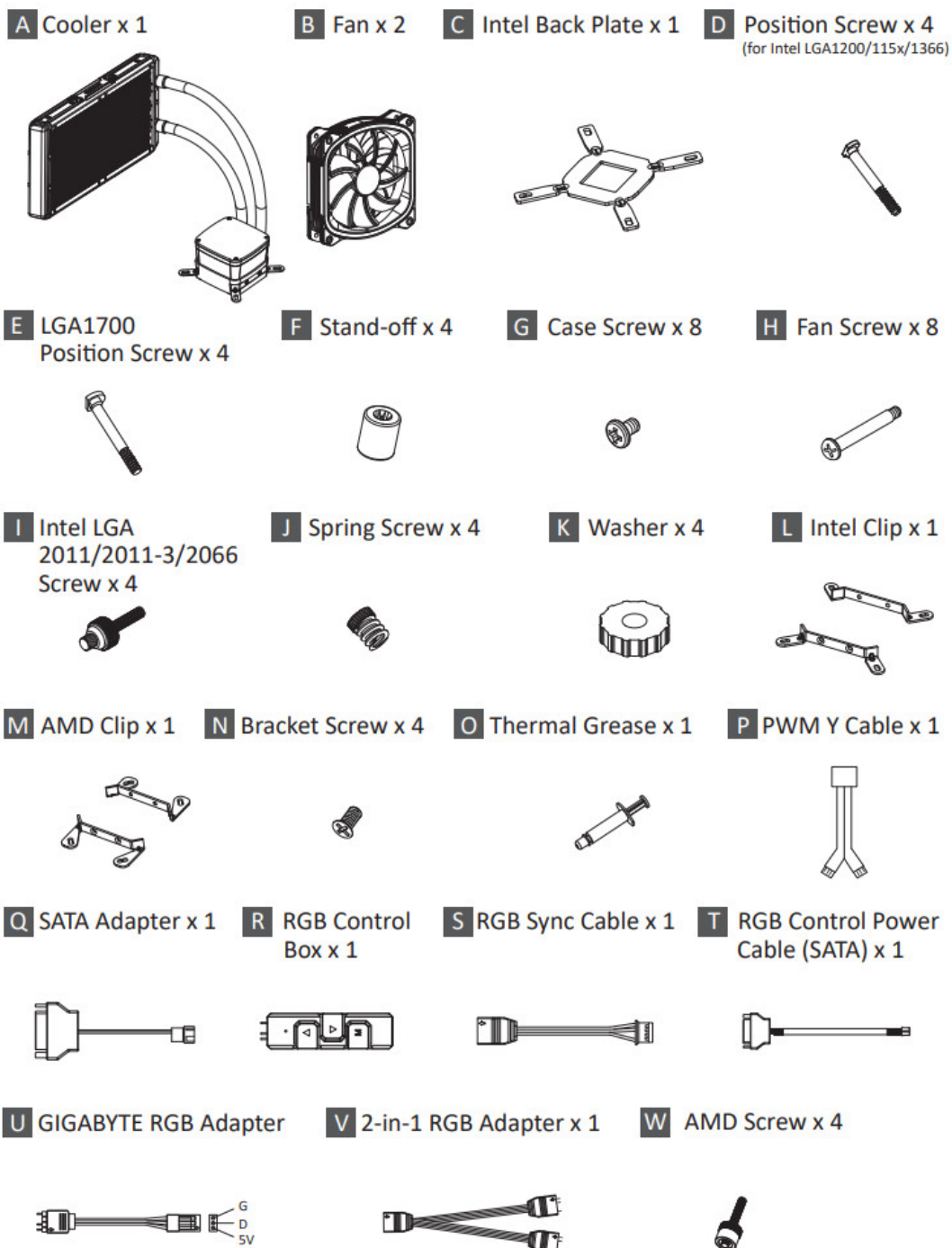
U 2-in-1 RGB Adapter x 1



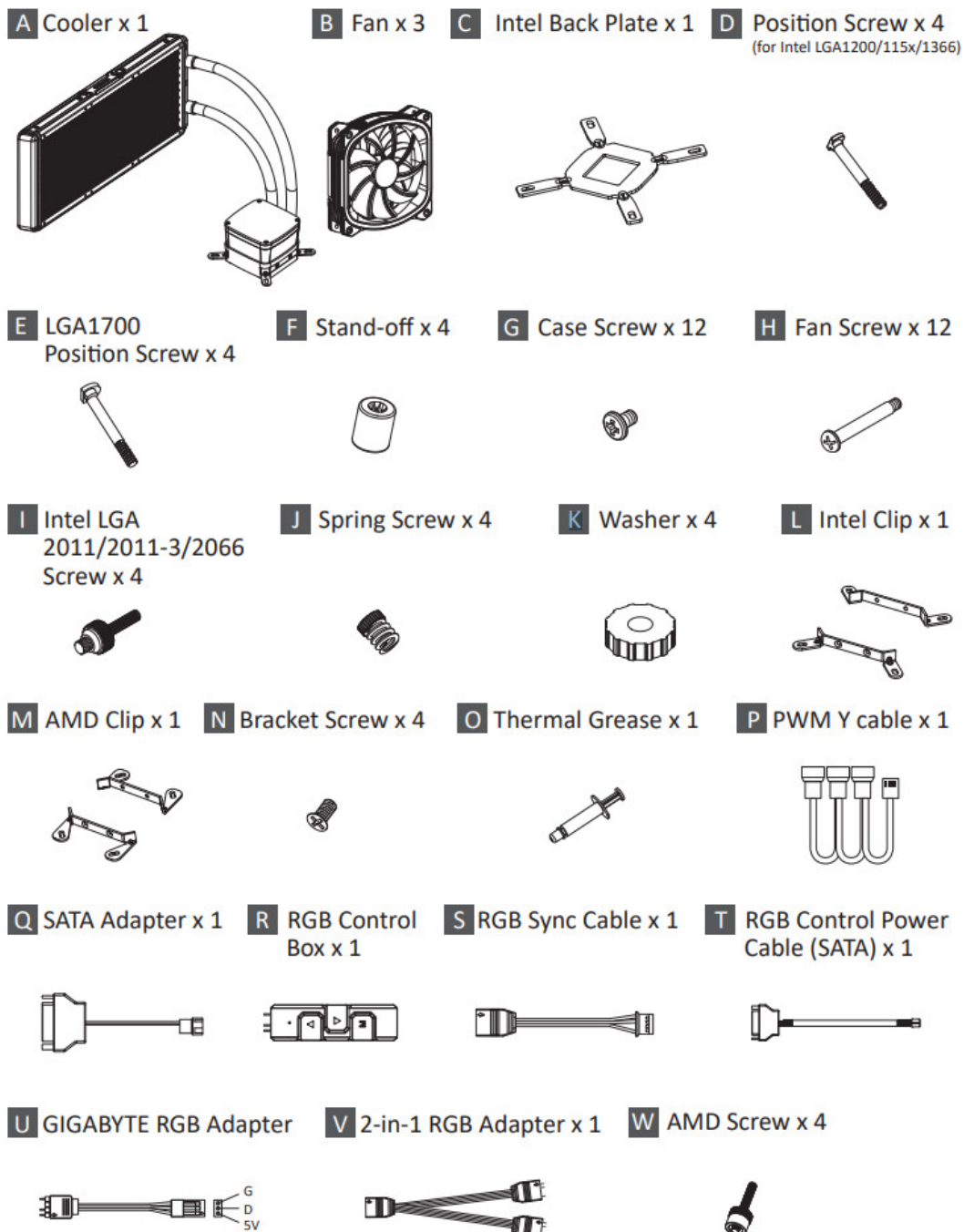
V AMD Screw x 4



Part List 240

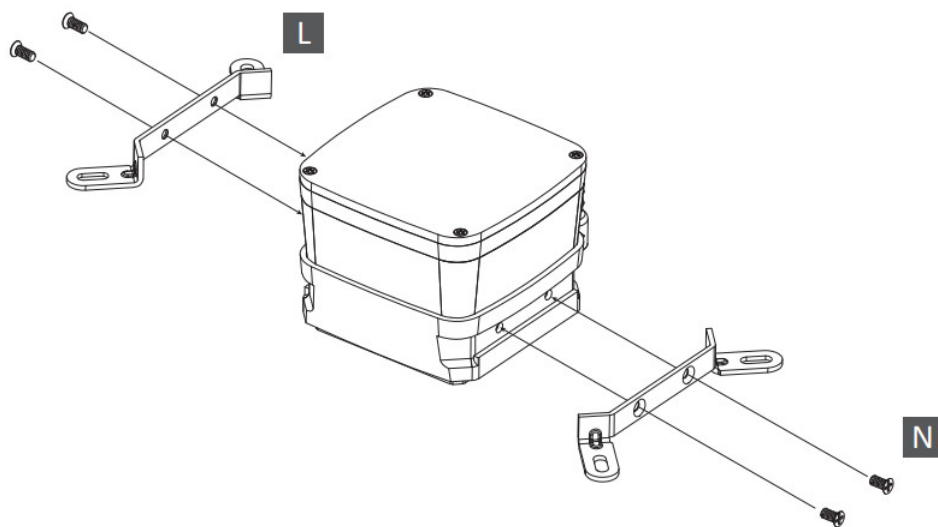


Part List 360



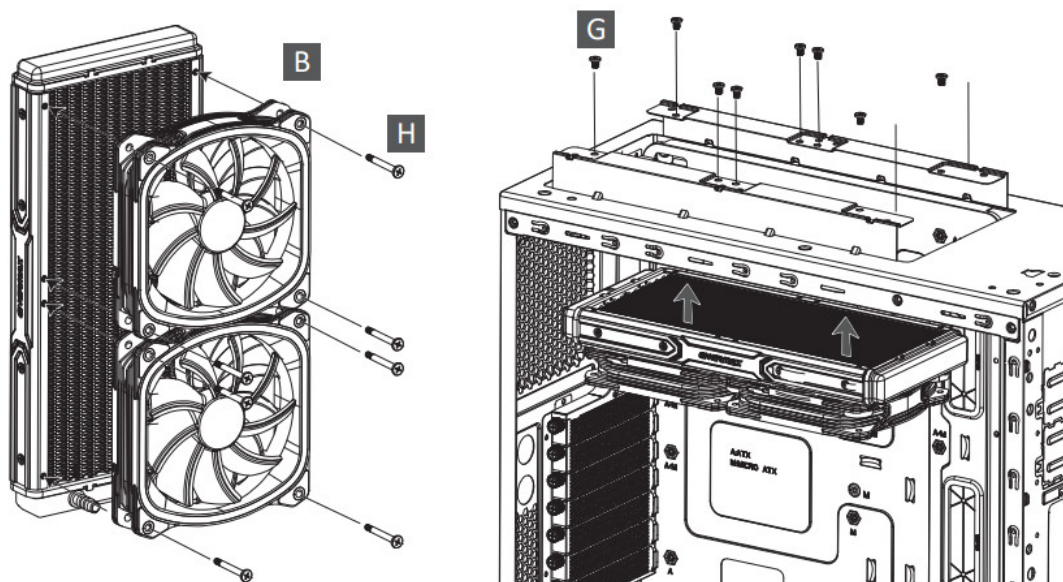
Intel Installation

Before Install



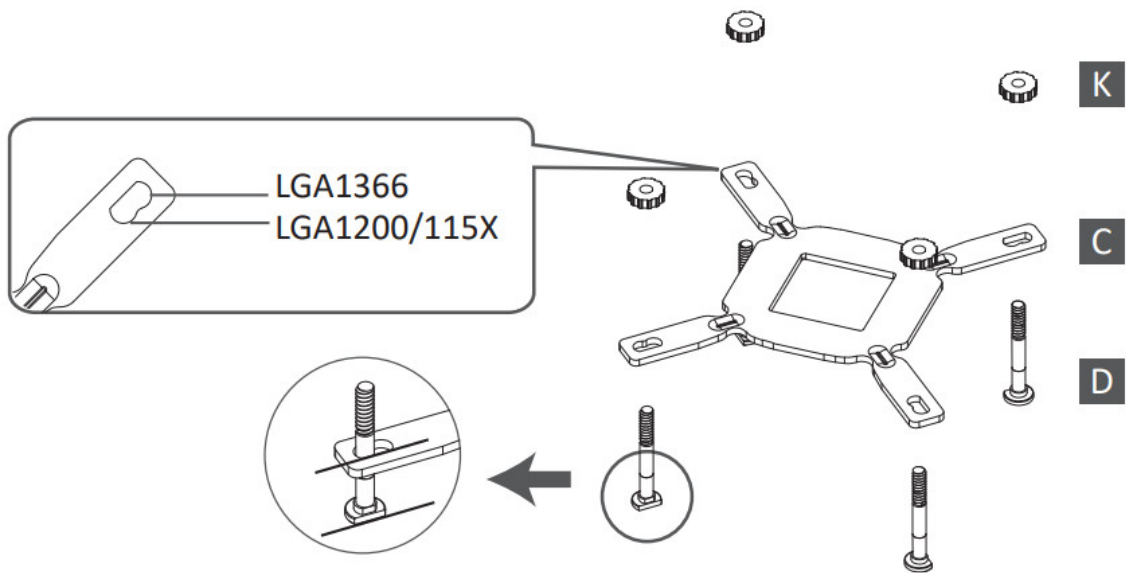
Install the Intel clip to the pump.

Step 1



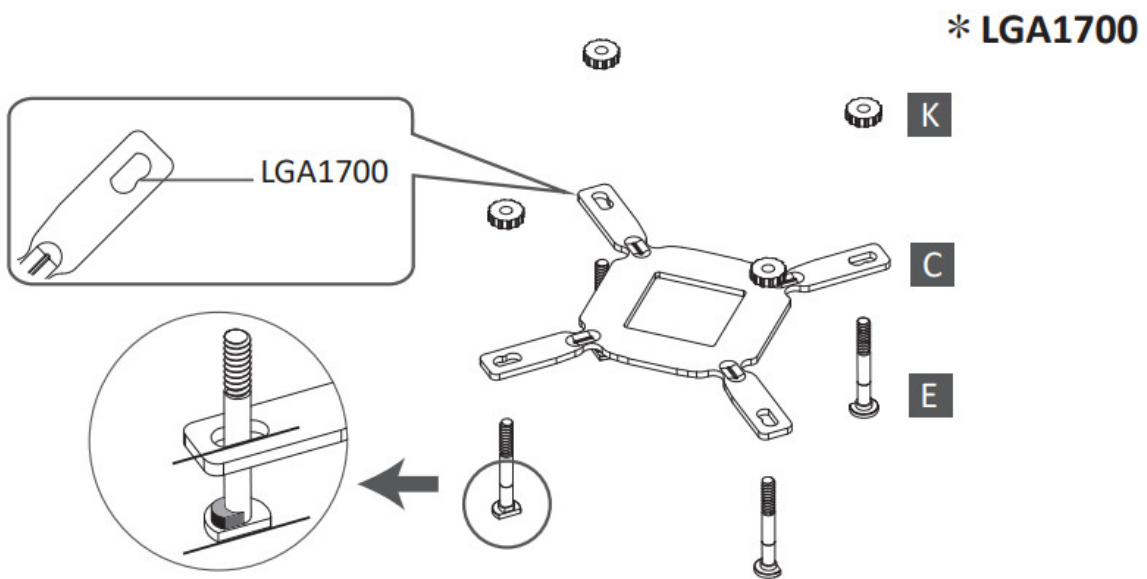
Attach the fan and the radiator to the chassis.

Step 2-1 LGA1200/115X/1366



Insert the position screws into the proper holes on the back plate. Then use the washers to fix the position screws.
 If your CPU platform is Intel 1700, please skip to step 2-2
 If your CPU platform is Intel 2011/2011-3/2066, please skip to step 3-2

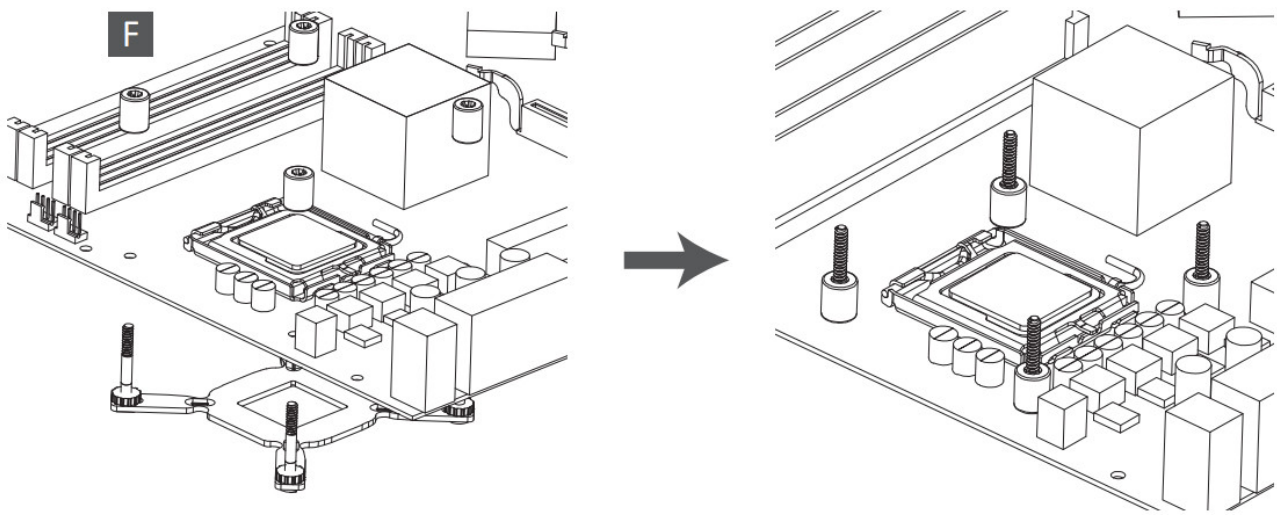
Step 2-2



Insert the LGA1700 position screws into the proper holes on the back plate.
 Then use the washers to fix the position screws.

Step 3-1

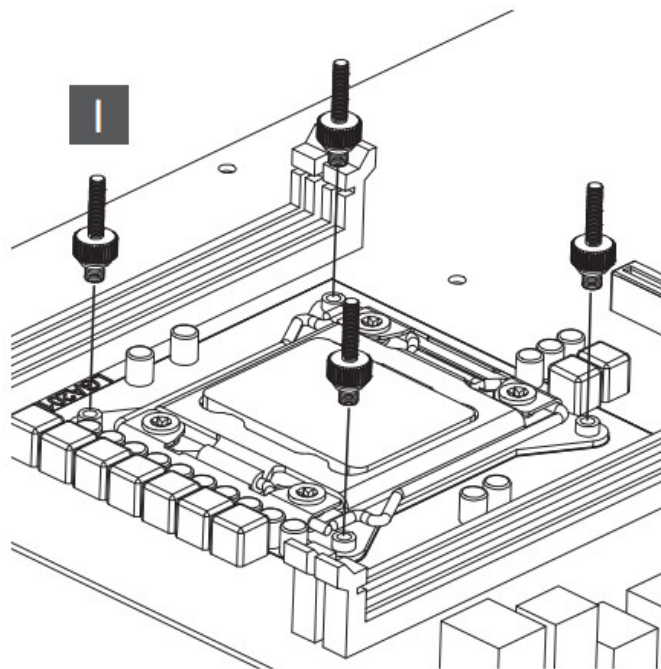
LGA1700/1200/115X/1366



Install the Intel back plate on to the back of motherboard; fix the back plate with the stand-off.

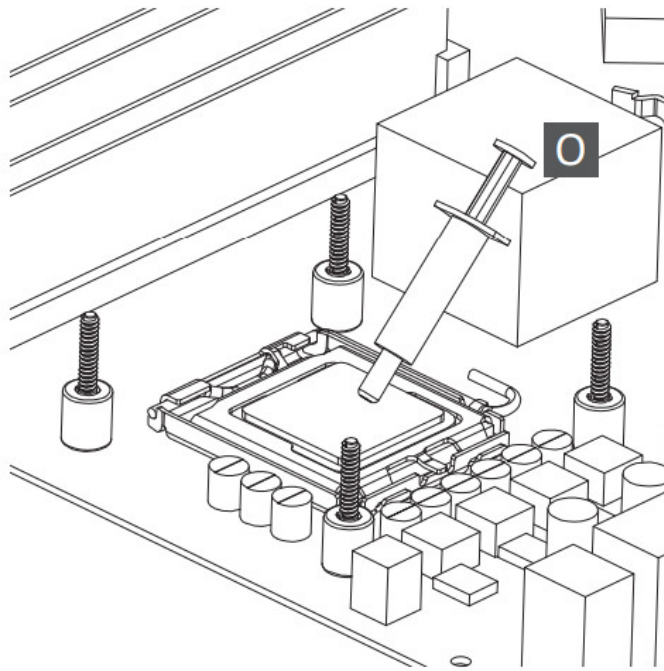
Step 3-2

Intel LGA 2011/2011-3/2066



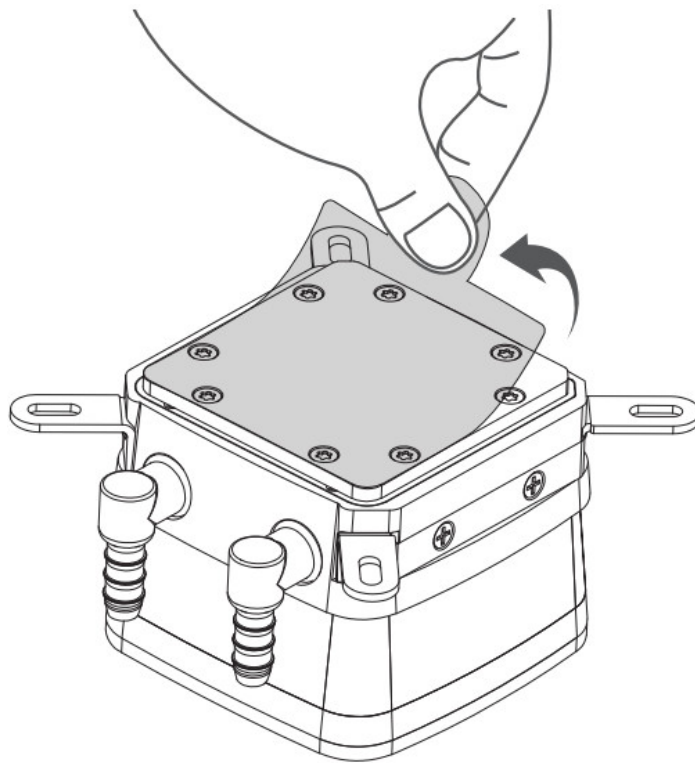
Tighten the Intel LGA2011/2011-3/2066 screw to the motherboard.

Step 4



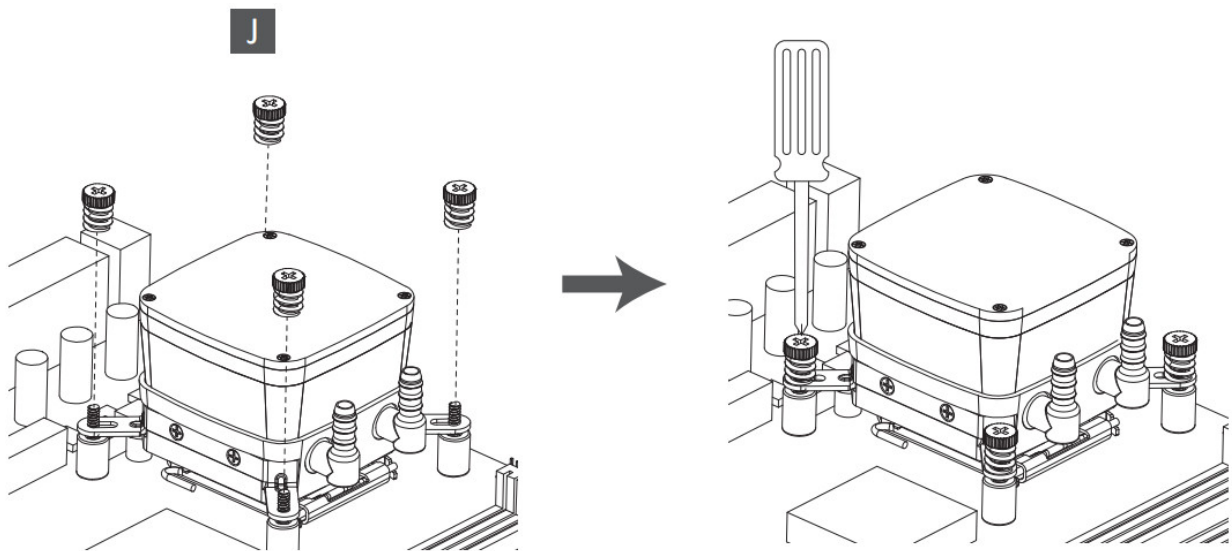
Apply the thermal grease evenly on the CPU surface..

Step 5



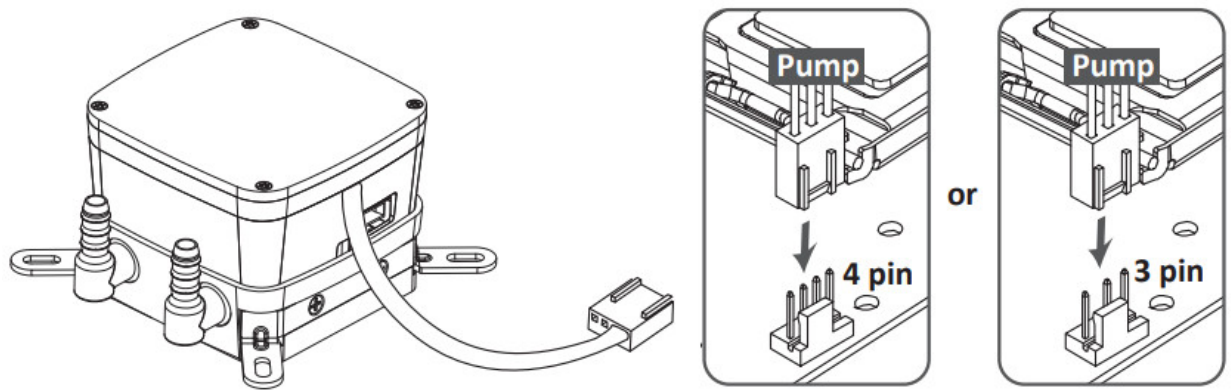
Remove the protect film from the cold-plate.

Step 6



Place the pump on the CPU and tighten the spring screws until all four corners are secured.

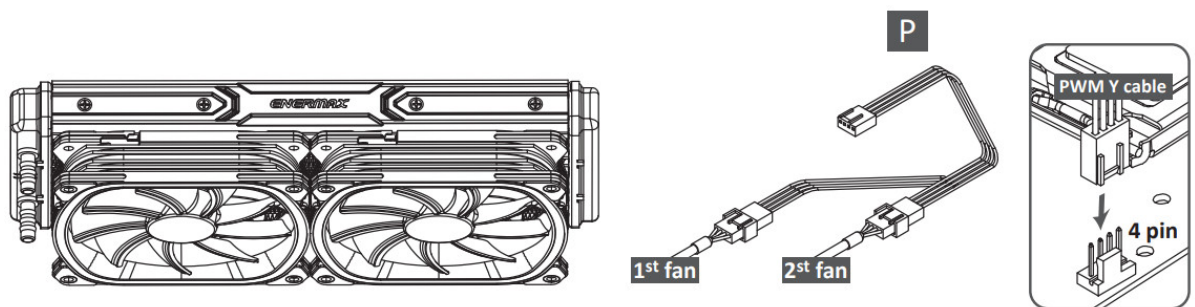
Step 7



Connect the pump power connector to the motherboard.

Notice: If you recognize that your mainboard's CPU fan or PWM sockets do not provide enough voltage to power the pump, please use the included SATA adaptor and connect the pump directly to your PSU.

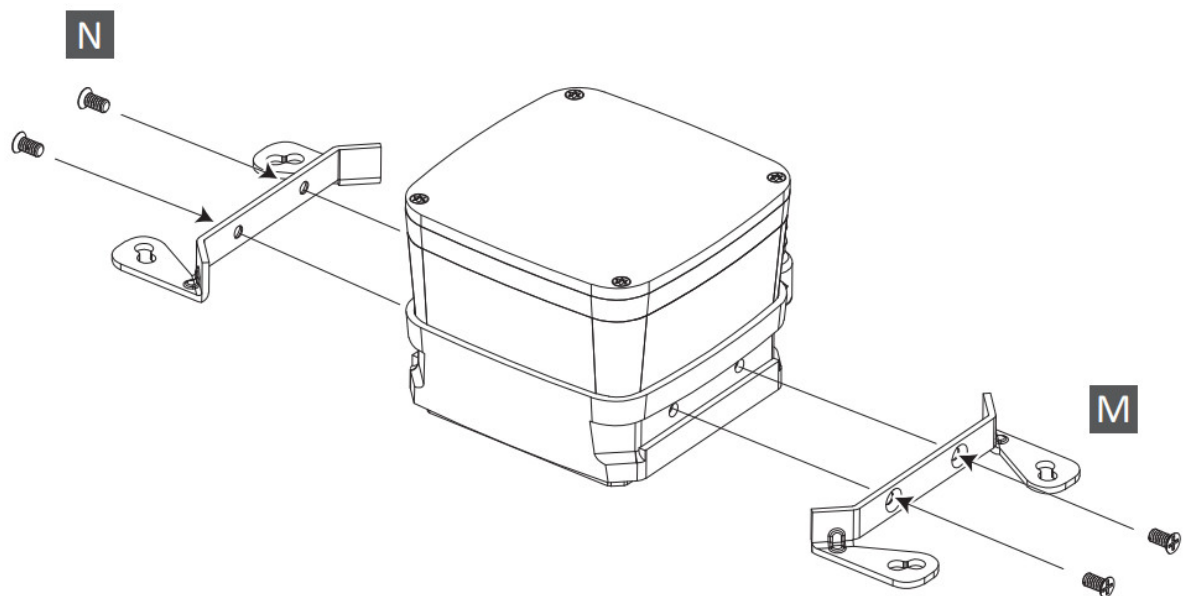
Step 8



Connect the fan connector to the motherboard.

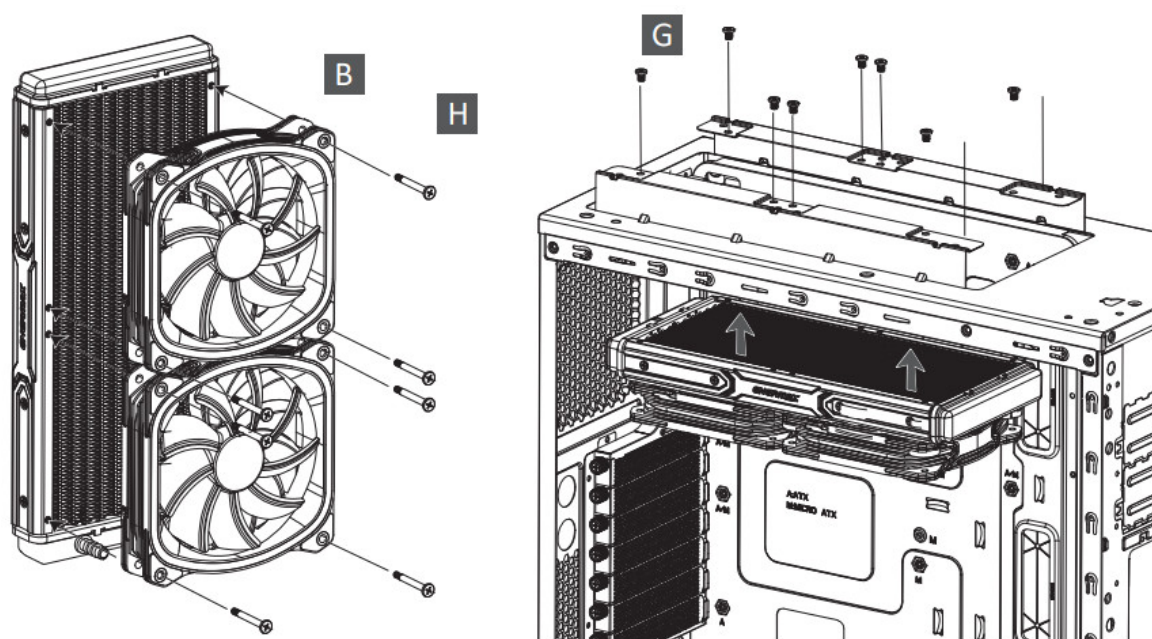
AMD Installation

Before Install



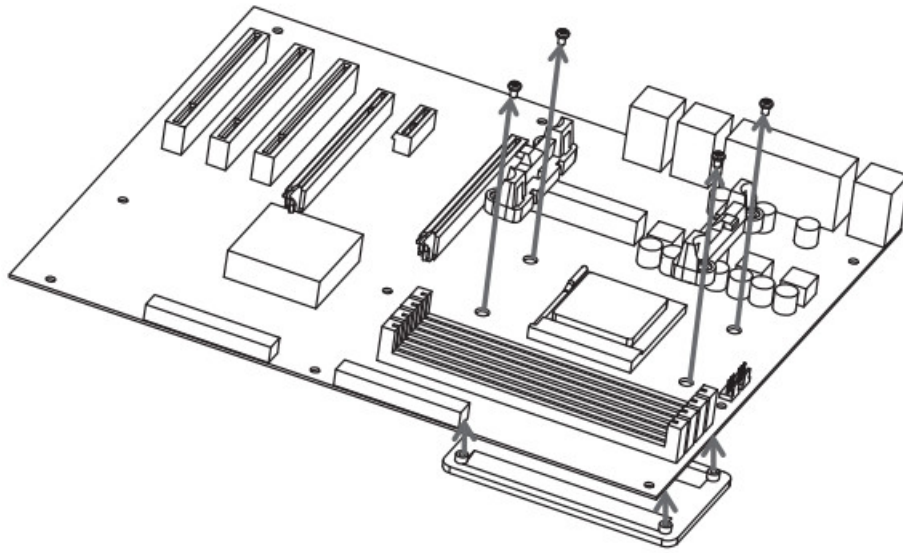
Install the AMD clip to the pump.

Step 1



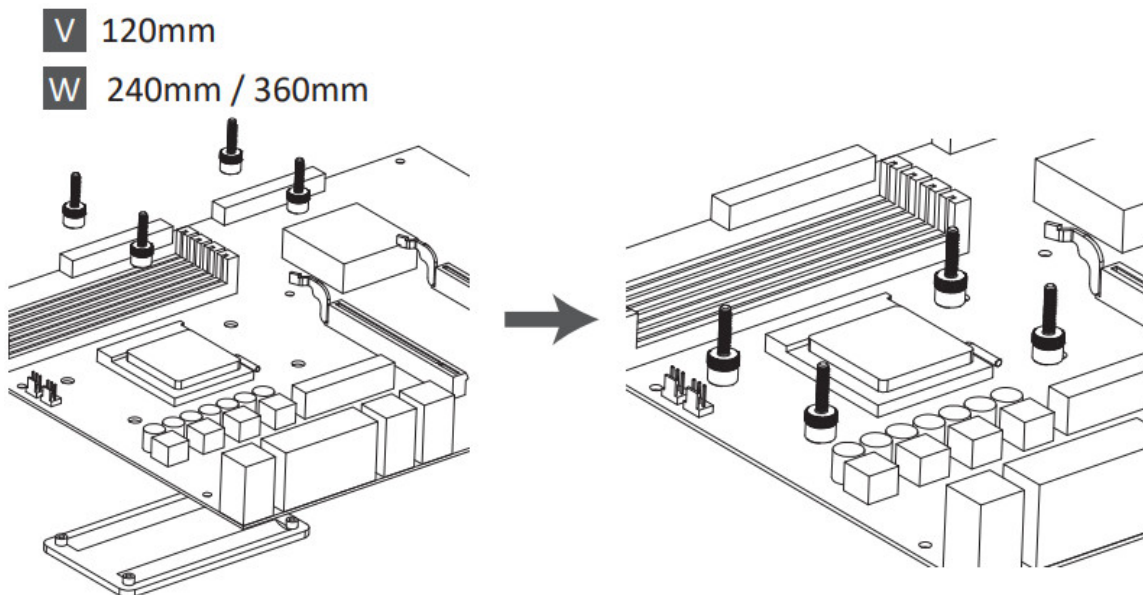
Attach the fan and the radiator to the chassis.

Step 2



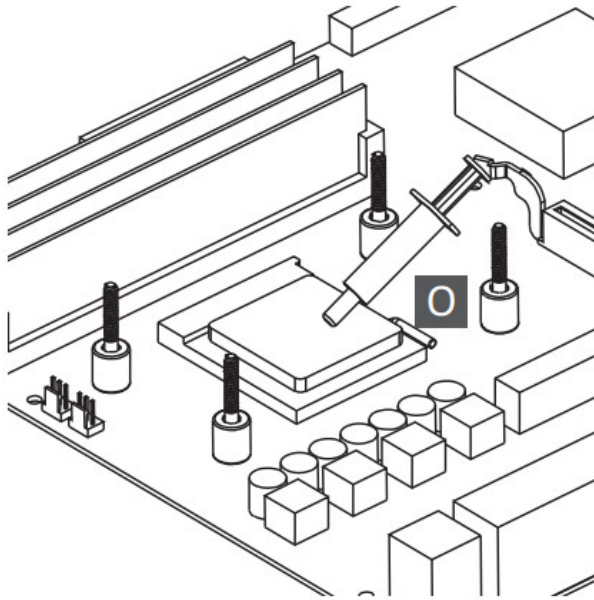
Remove the original screws and place the back plate back into position.

Step 3



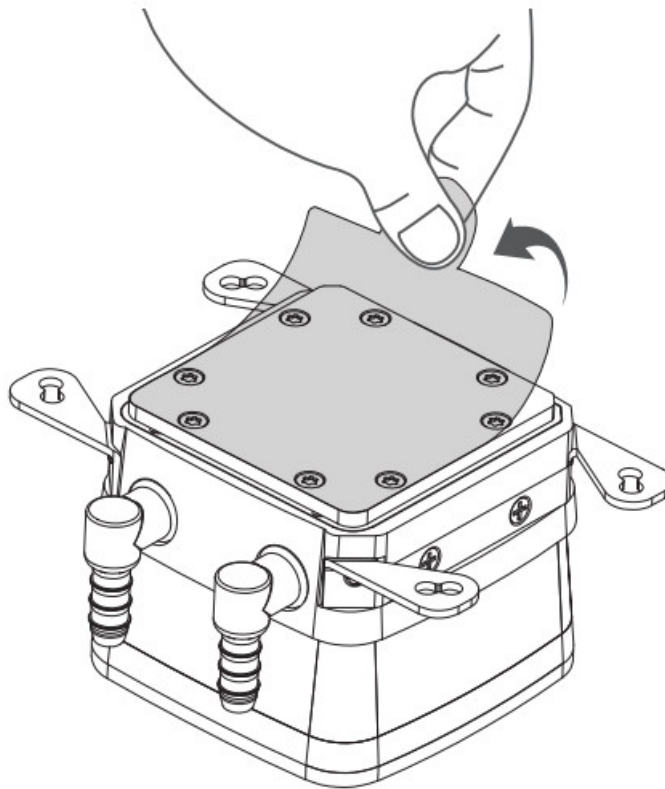
Tighten the AMD screw to the AMD stock back plate (included with the motherboard).

Step 4



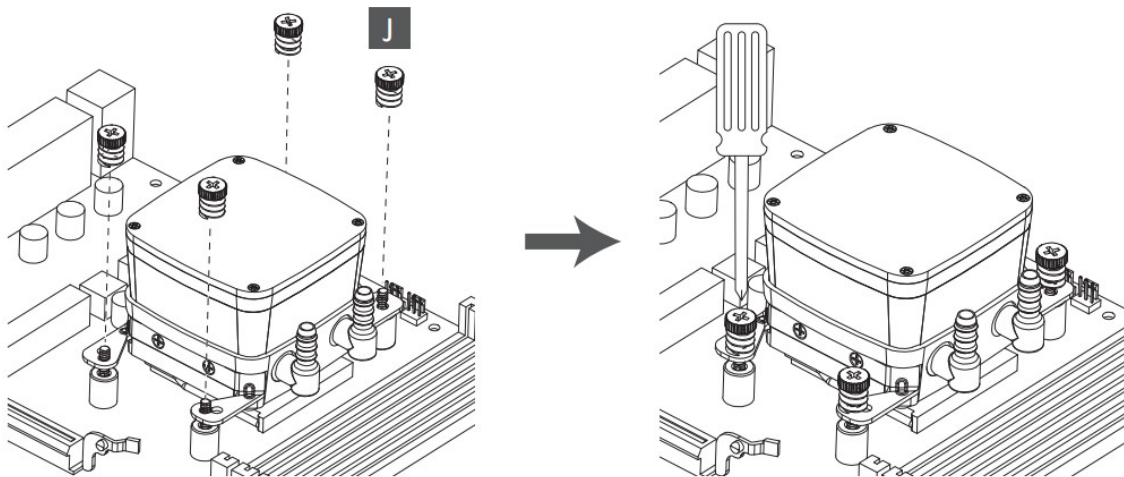
Apply the thermal grease evenly on the CPU surface.

Step 5



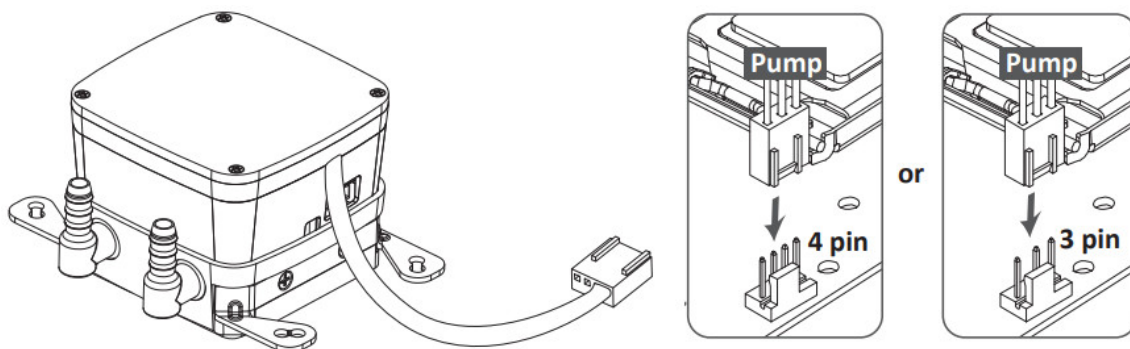
Remove the protect film from the cold-plate.

Step 6



Place the pump on the CPU and tighten the spring screws until all four corners are secured.

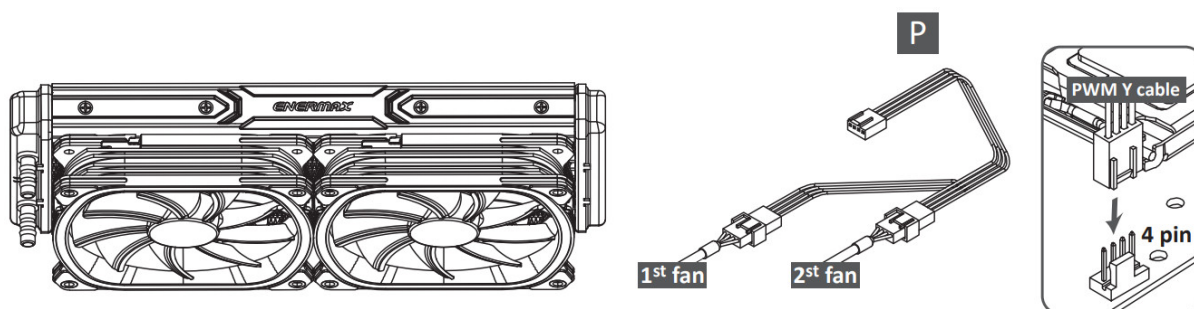
Step 7



Connect the pump power connector to the motherboard.

Notice: If you recognize that your mainboard's CPU fan or PWM sockets do not provide enough voltage to power the pump, please use the included SATA adaptor and connect the pump directly to your PSU.

Step 8

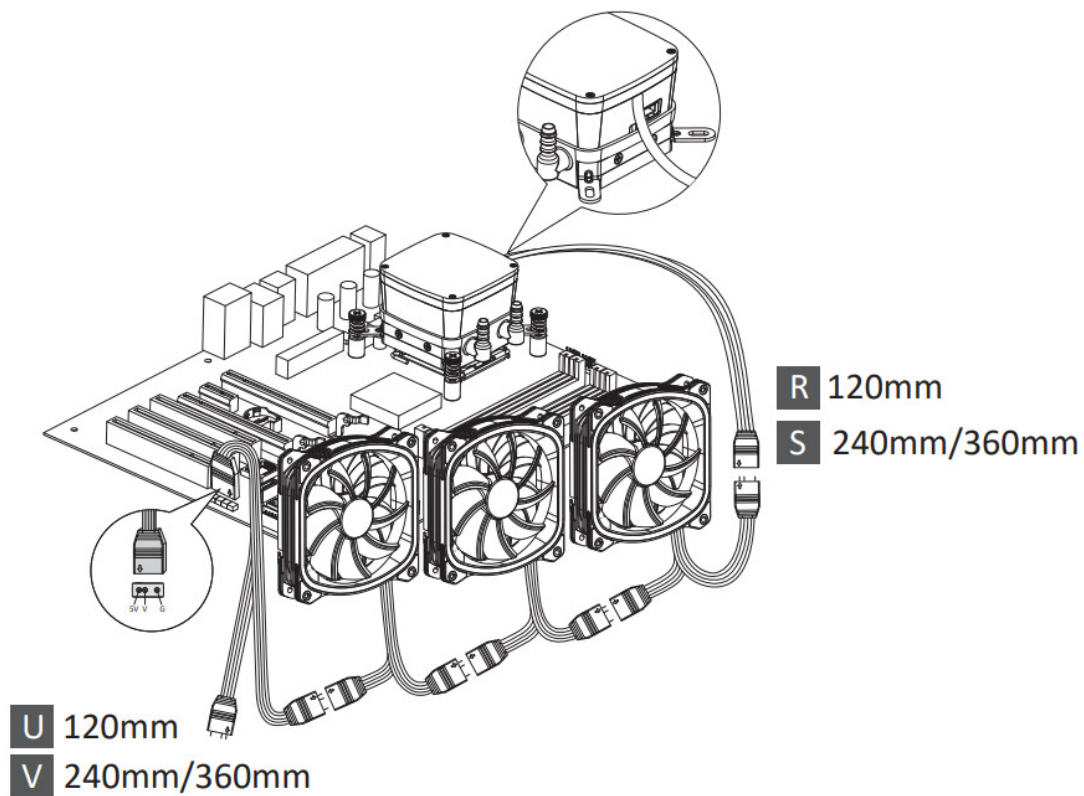


Connect the fan connector to the motherboard.

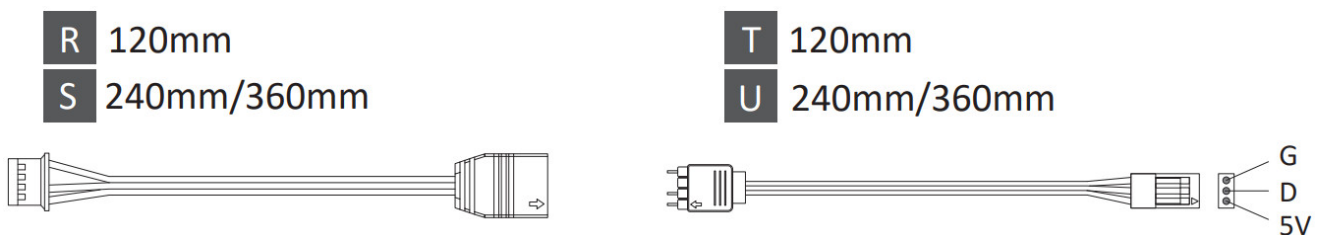
Motherboard Sync



Please ensure the motherboard with 3-pin (5V) Addressable RGB header



Connect the sync cable to a supported motherboard with RGB header.



For GIGABYTE motherboards, the pin assignment* of the addressable RGB headers is different from those of AQUAFUSION ADV. Therefore, when you install the cooler onto the motherboards, please connect the RGB Sync cable to the adapter (both cables are included in the AQUAFUSION ADV package). Next step please connect the RGB Sync adapter to the motherboard addressable RGB header, to enrich and perfect your lighting experience.

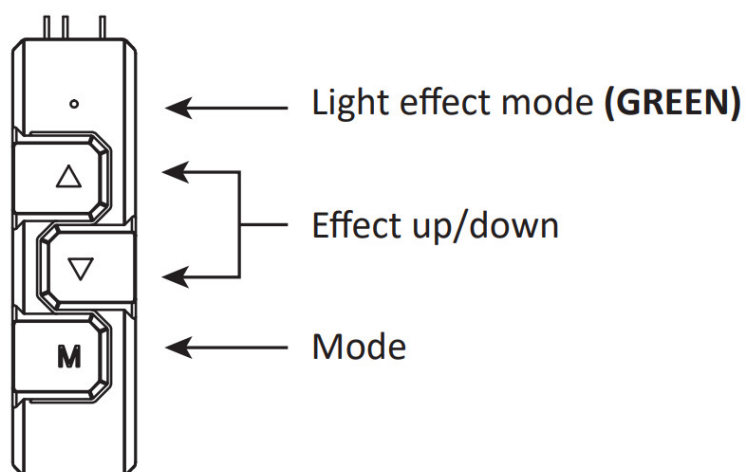
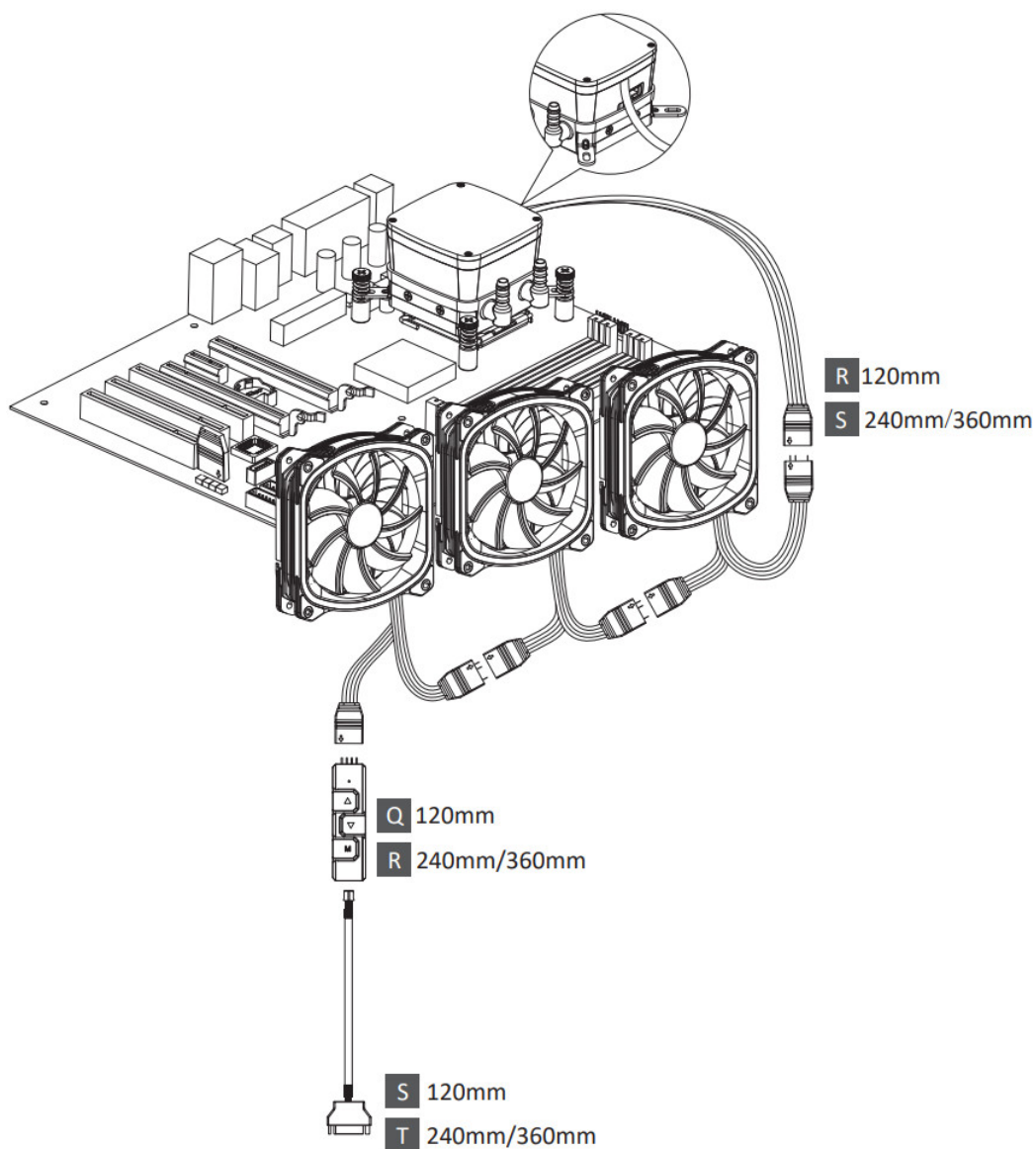
* GIGABYTE RGB header pin assignment: V/D/G

RGB Control Box



For non-addressable RGB motherboard

When you install the cooler onto the motherboard, please connect the RGB Sync cable to the water block, and then connect the power connectors to RGB control box. Meanwhile, connect the SATA power cable to PC power supply SATA connector.



The 4 LED colors indicate the different modes: GREEN (Light Effect), RED (Effect Speed), BLUE (Brightness), YELLOW (Auto-run).

1. Press "M" until you reach the Light Effect Mode (GREEN).
2. To change the effect, press the ▲ or ▼ button.
3. 10 pre-set light effects:
 - 1) Racing-Rainbow (Default)
 - 2) Breathing-Rainbow

3) Flash-Rainbow

4) Overlaying-Rainbow

5) Flow-Rainbow

6) Colors auto-run (8 colors)

Press ▲ for 3 seconds to fix the current color. Press ▲ for 3 seconds again to return to the Colors auto-run effect.

7) Ripple auto-run (8 colors)

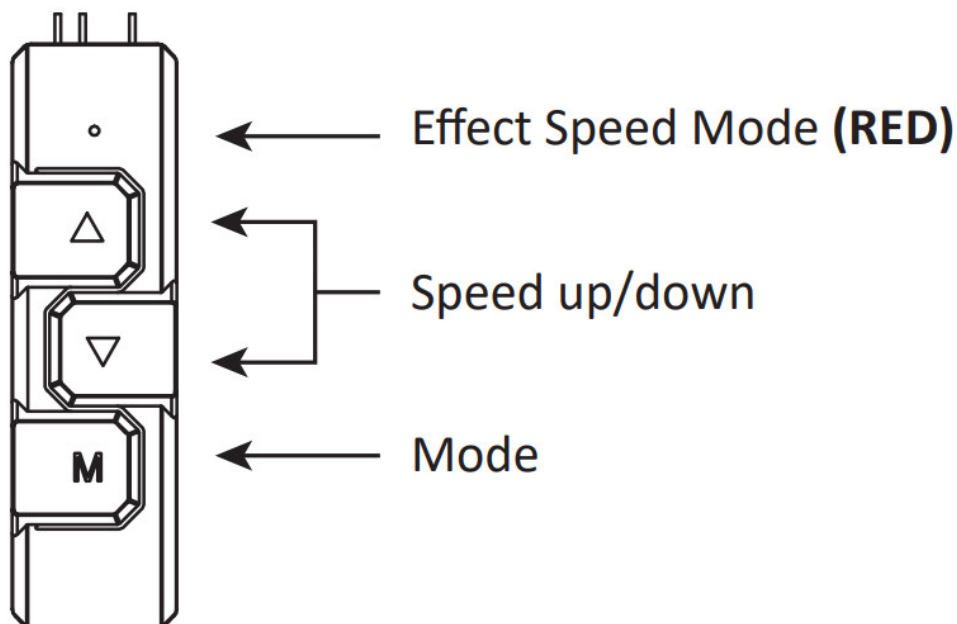
Press ▲ for 3 seconds to fix the current color. Press ▲ for 3 seconds again to return to the Flash auto-run effect.

8) Overlaying-RED

9) Overlaying-GREEN

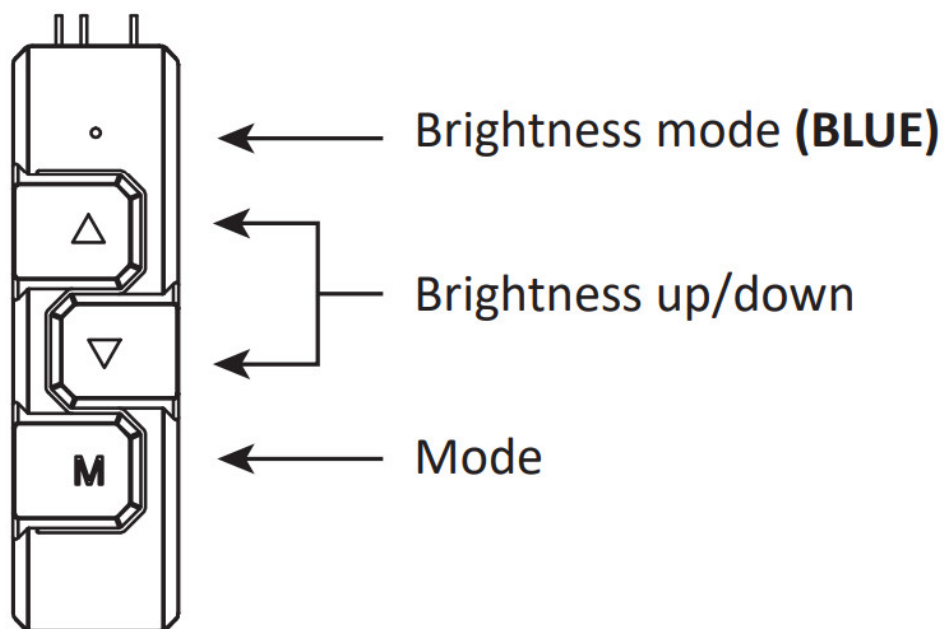
10) Overlaying-BLUE

4. Pressing ▼ for 3 seconds will return to the default "Racing-Rainbow" effect.



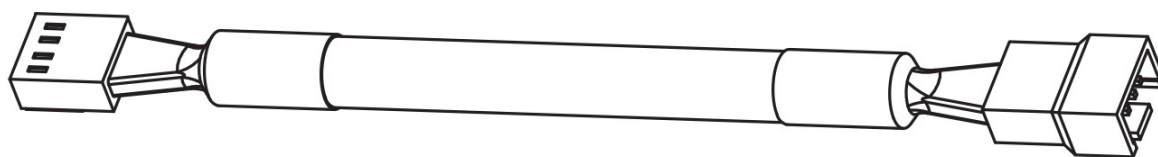
1. Press "M" until you reach the Effect Speed Mode (RED).

2. To change the effect speed, press the ▲ or ▼ button.



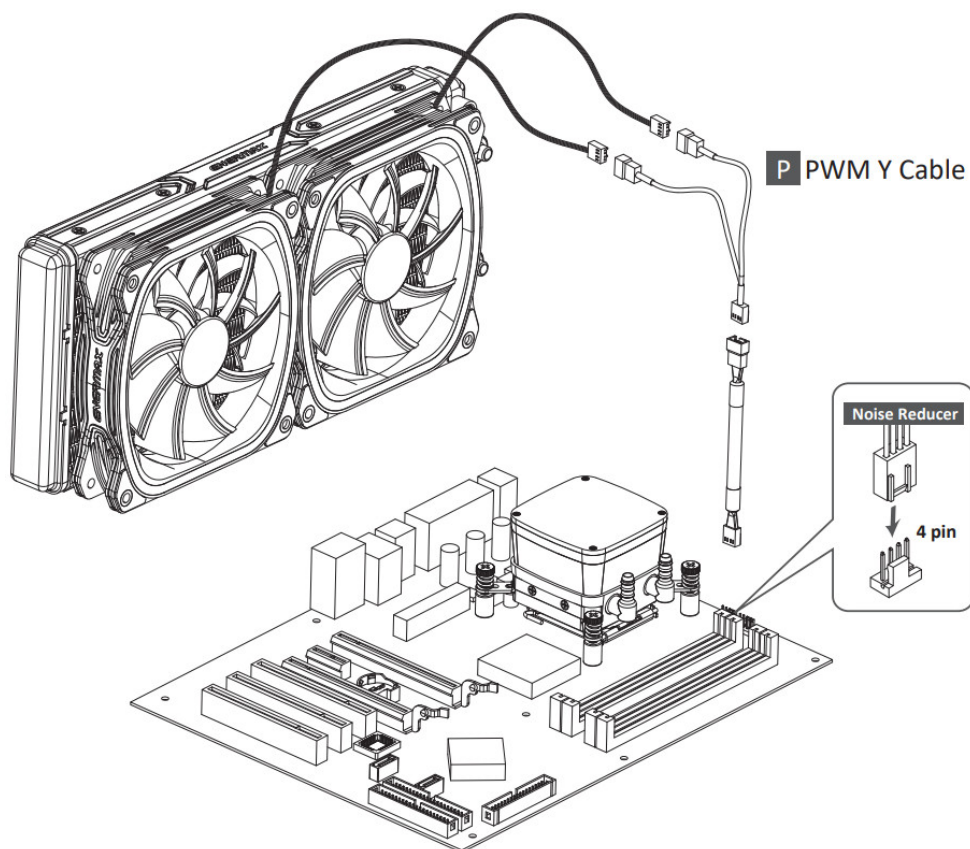
1. Press "M" until you reach the Brightness Mode (BLUE).
2. To adjust the brightness, press the ▲ or ▼ button.
3. cPress "M" in any mode for 3 seconds to turn-off the light. Press "M" again to turn on the light and continue with the previous effect.

Noise Reducer



Noise Reducer adaptor for reducing the speed and noise of radiator fans.

Installation



Compatible with 240 & 360mm	With Adaptor
Max Fan Speed	1,700 rpm ($\pm 10\%$)
Max Fan Air Flow	67.1 CFM
Max Fan Static Pressure	2.1 mm-H ₂ O
Max Fan Maximum Noise	27.4 dBA



©2023 ENERMAX TECHNOLOGY CORPORATION. All right reserved. Specifications are subject to change without prior notice. Some trademarks may be claimed as the property of others.

Jul. 2023

Documents / Resources

<p>ENERMAX</p> <p>AQUAFUSION ADV</p> <p>120 (240) 360 mm</p> <p>User's Manual</p>	<p>ENERMAX ELC-AQFA360-SQA Addressable RGB AIO Cooler [pdf] User Manual</p> <p>ELC-AQFA360-SQA, ELC-AQFA360-SQA Addressable RGB AIO Cooler, ELC-AQFA360-SQA, Addressable RGB AIO Cooler, RGB AIO Cooler, AIO Cooler, Cooler</p>
---	---

References

- [User Manual](#)

[Manuals+](#), [Privacy Policy](#)