

Enerlites MPP-24 Multi Tech Ceiling Mount Occupancy Sensor



Enerlites MPP-24 Multi Tech Ceiling Mount Occupancy Sensor Instruction Manual

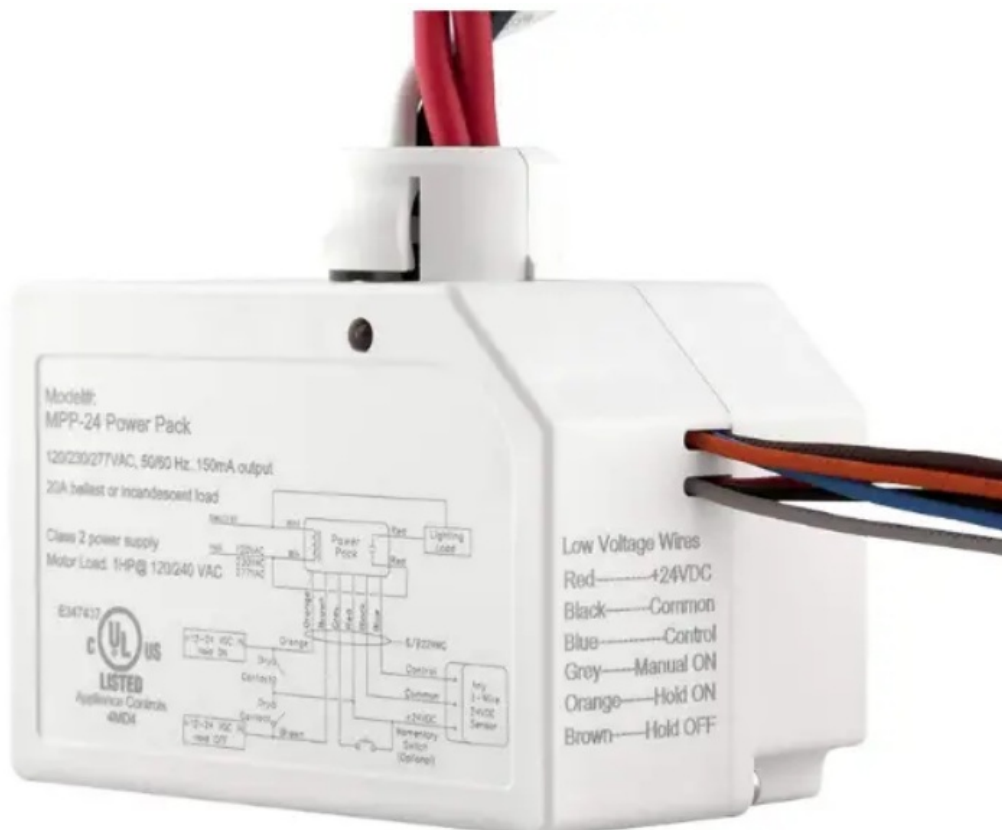
[Home](#) » [ENERLITES](#) » Enerlites MPP-24 Multi Tech Ceiling Mount Occupancy Sensor Instruction Manual 

Contents

- [1 Enerlites MPP-24 Multi Tech Ceiling Mount Occupancy Sensor](#)
- [2 Product Usage Instructions](#)
- [3 CLASSROOM](#)
- [4 CONFERENCE ROOM](#)
- [5 COMMON AREA](#)
- [6 BREAKROOM](#)
- [7 RECEPTIONIST](#)
- [8 SMALL OFFICE SINGLE ZONE](#)
- [9 SMALL OFFICE DUAL ZONE](#)
- [10 SMALL OFFICE DUAL ZONE – WIRELESS PLUG LOAD](#)
- [11 Documents / Resources](#)
 - [11.1 References](#)

Enerlites®

Enerlites MPP-24 Multi Tech Ceiling Mount Occupancy Sensor



Specifications:

- **Power Pack:** 20A, 120-277V
- **Occupancy Sensor:** Multi-Tech Ceiling Mount, 24V Common Control
- **Dimmer:** Low Voltage 0-10V, Model LVD-102
- **Coupler:** Low Voltage to Cat-5, Model LV-Cat5
- **Receptacle:** 20A, 125V Half-Controlled, Model 63200-TR-PLH

Product Usage Instructions

Primary Daylight Zone:

The primary daylight zone is controlled by a 0-10V sinking line lighting circuit. The power pack operates on 24V common control. Ensure proper connections are made as per the manual.

Secondary Daylight Zone:

The secondary daylight zone includes a receptacle circuit line feed. The controlled receptacle is powered by a 24V common control power pack. Use the Low Voltage 0-10V Dimmer for this zone.

Conference Room:

In the conference room, utilize the Cat-5 cable for control, and the 0-10V sinking line lighting circuit for illumination. The power pack should be connected with proper voltage settings for optimal performance.

Common Area:

The common area features a 0-10V sinking line lighting circuit controlled by a 24V common control. Utilize the occupancy sensor for efficient lighting management in this space.

Breakroom:

For the breakroom, connect the 0-10V sinking line lighting circuit with the power pack. Use the low voltage dimmer for adjusting the lighting levels. Ensure proper setup of the occupancy sensor for energy-efficient operations.

FAQ:

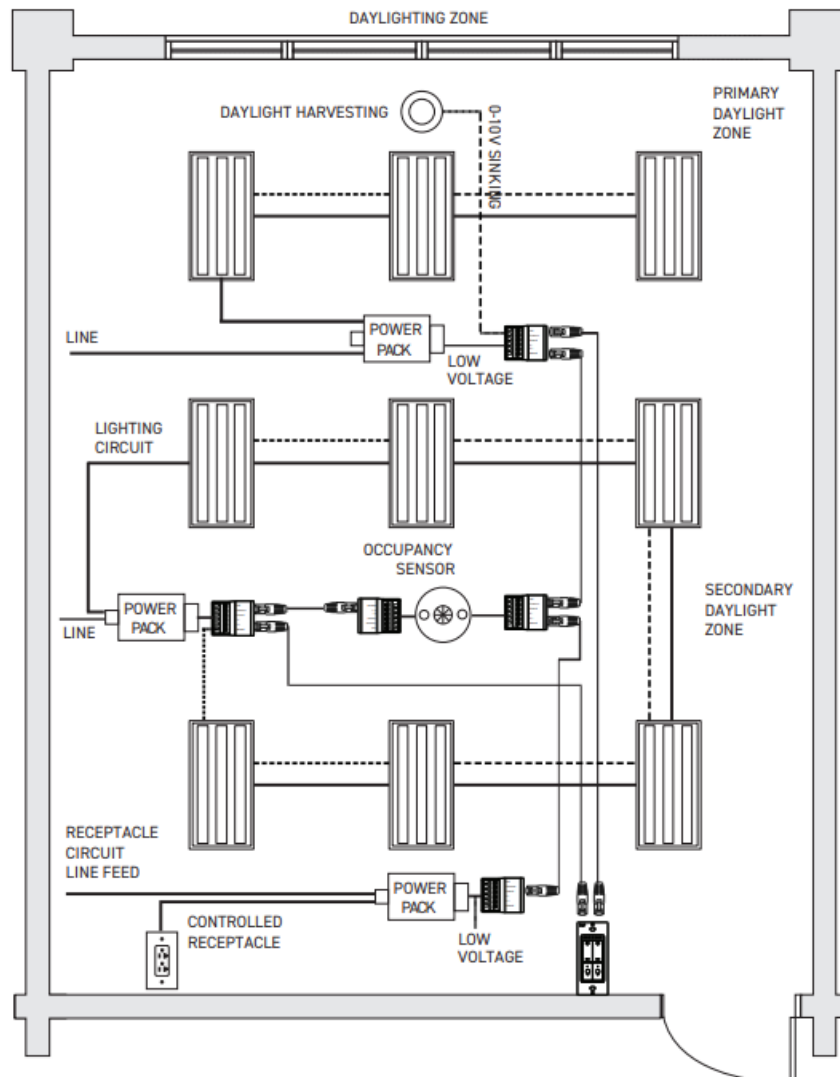
- **Q: What are the main components included in the product?**

A: The main components are a power pack, occupancy sensor, dimmer, coupler, and half-controlled receptacle.

- **Q: How should I ensure energy efficiency in my space using this product?**

A: Utilize the occupancy sensor and dimmer to control lighting based on occupancy and natural light levels, ensuring energy is only used when needed.

CLASSROOM



LIST OF DEVICES

	20A 120-277V Power Pack MPP-24	3
	Multi-Tech Ceiling Mount Occupancy Sensor MDC-50L	1
	Daylight harvesting, Indoor MPL-010	1
	Low Voltage 0-10V Dimmer LVD-102	1
	Low Voltage to Cat-5 coupler LV-Cat5	5
	20A 125V Half-Controlled Receptacle 63200-TR-PLH	6

FEATURES

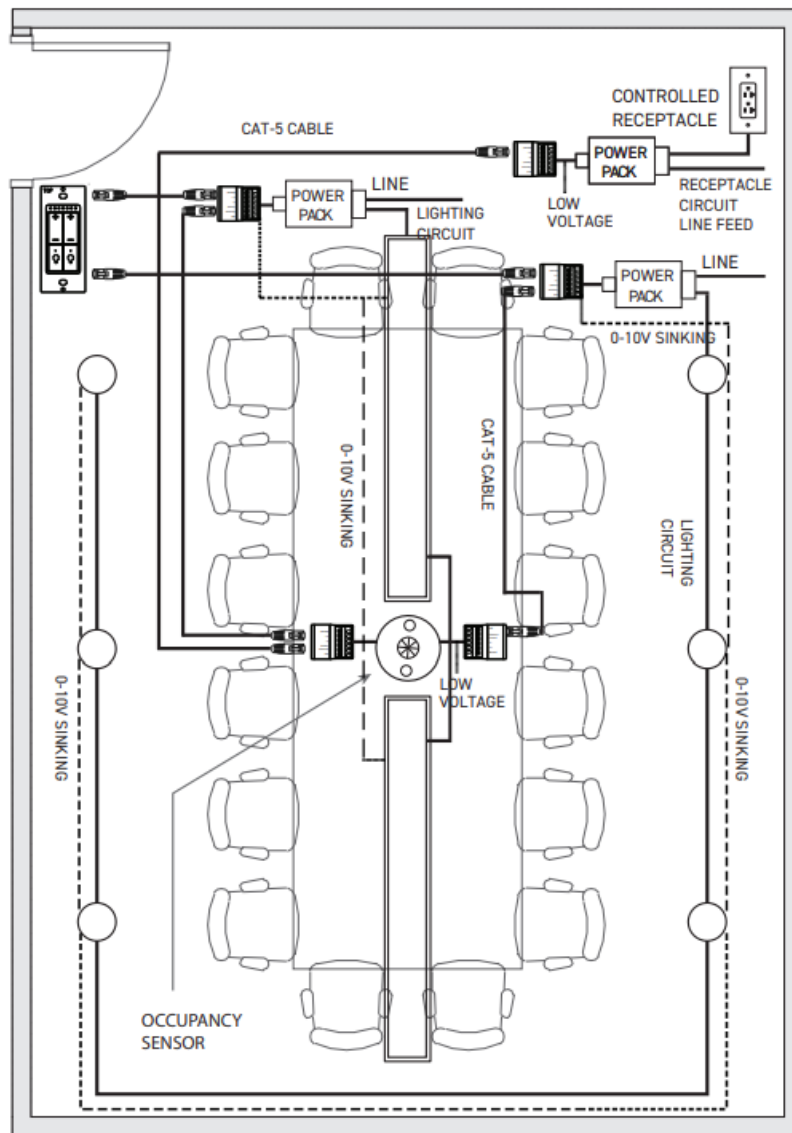
- Decorator dual zones dimmer
- 0-10V Dimming Control
- Vacancy or Occupancy Sensing with Auto-OFF
- Daylight harvesting
- Plug Load Control with Power Pack

Note: 50% of all receptacles in applicable spaces must be controlled by an occupancy sensor.






Meets the Following Requirements:

- Section 8.4.2
 - Automatic Receptacle Control
- Section 9.4.1.1
 - Interior Lighting Control
- Section 9.4.1
 - Lighting Control

CONFERENCE ROOM



LIST OF DEVICES

	20A 120-277V Power Pack MPP-24	3
	Multi-Tech Ceiling Mount Occupancy Sensor MDC-50L	1
	Low Voltage 0-10V Dimmer LVD-102	1
	Low Voltage to Cat-5 coupler LV-Cat5	5
	20A 125V Half-Controlled Receptacle 63200-TR-PLH	6

FEATURES

- Decorator dual zones dimmer
- 0-10V Dimming Control

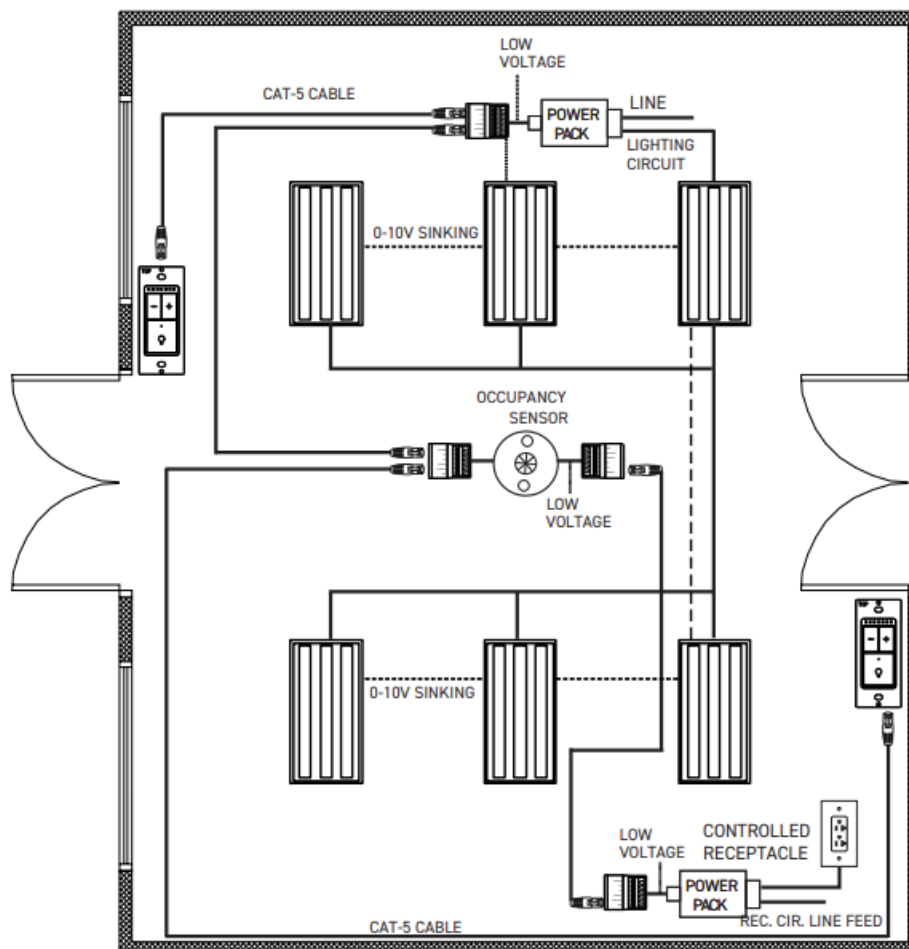
- Vacancy or Occupancy Sensing with Auto-OFF
- Plug Load Control with Power Pack

Note: 50% of all receptacles in applicable spaces must be controlled by an occupancy sensor.






Meets the Following Requirements:

- Section 8.4.2
 - Automatic Receptacle Control
- Section 9.4.1.1
 - Interior Lighting Control
- Section 9.4.1
 - Lighting Control

COMMON AREA



LIST OF DEVICES

	20A 120-277V Power Pack MPP-24	2
	Multi-Tech Ceiling Mount Occupancy Sensor MDC-50L	1
	Low Voltage 0-10V Dimmer LVD-101	2
	Low Voltage to Cat-5 coupler LV-Cat5	4
	20A 125V Half-Controlled Receptacle 63200-TR-PLH	6

FEATURES

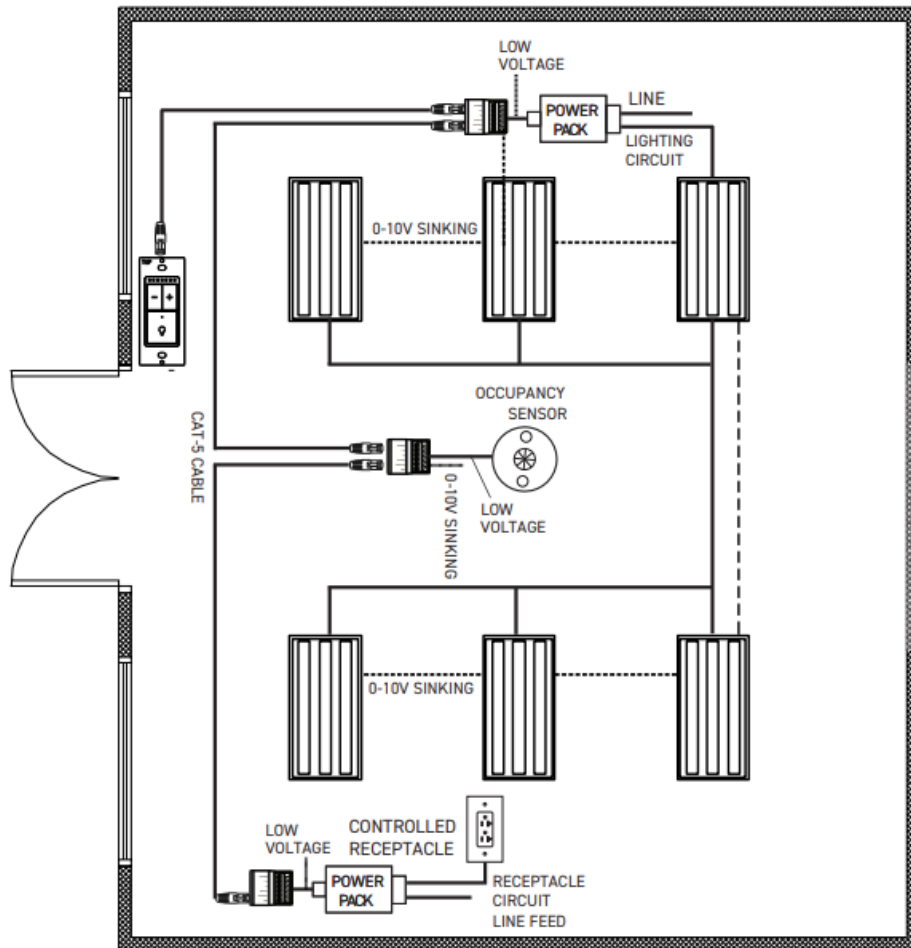
- Decorator 3-way dimmer
- 0-10V Dimming Control
- Vacancy or Occupancy Sensing with Auto-OFF
- Plug Load Control with Power Pack

Note: 50% of all receptacles in applicable spaces must be controlled by an occupancy sensor.






Meets the Following Requirements:

- Section 8.4.2
 - Automatic Receptacle Control
- Section 9.4.1.1
 - Interior Lighting Control
- Section 9.4.1
 - Lighting Control

BREAKROOM



LIST OF DEVICES

	20A 120-277V Power Pack MPP-24	2
	Multi-Tech Ceiling Mount Occupancy Sensor MDC-50L	1
	Low Voltage 0-10V Dimmer LVD-101	1
	Low Voltage to Cat-5 coupler LV-Cat5	3
	20A 125V Half-Controlled Receptacle 63200-TR-PLH	6

FEATURES

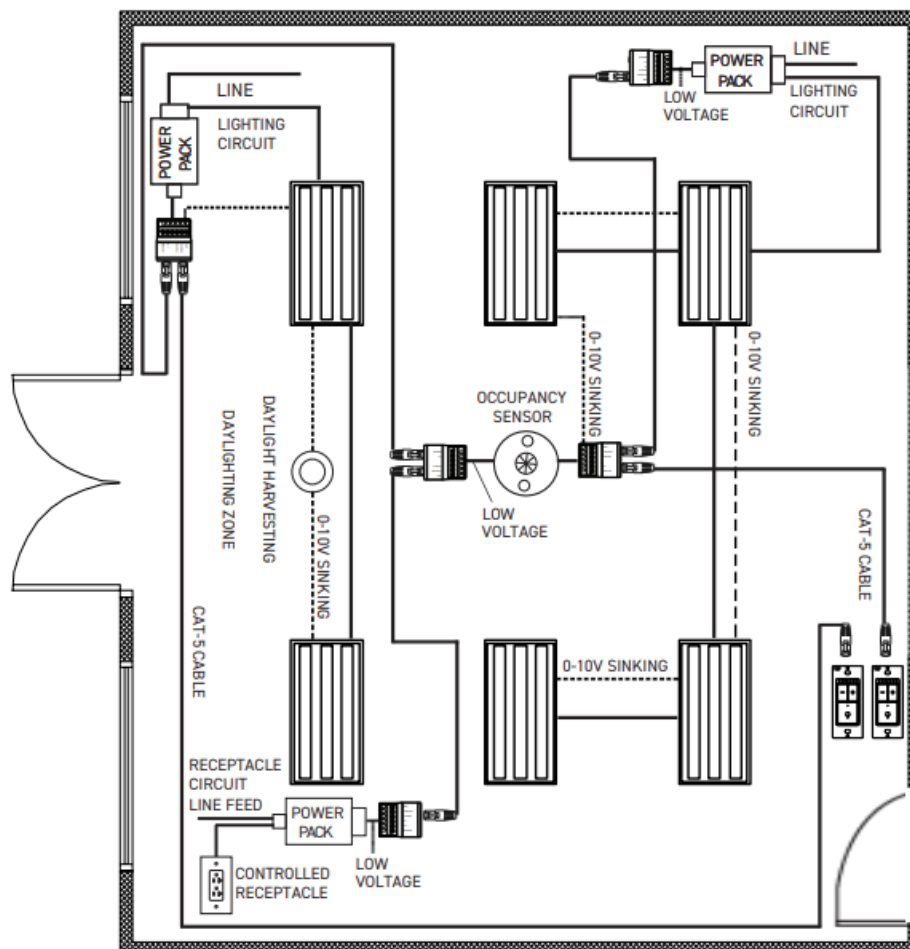
- Decorator dimmer
- 0-10V Dimming Control
- Vacancy or Occupancy Sensing with Auto-OFF
- Plug Load Control with Power Pack

Note: 50% of all receptacles in applicable spaces must be controlled by an occupancy sensor.

Meets the Following Requirements:

- Section 8.4.2
 - Automatic Receptacle Control
- Section 9.4.1.1
 - Interior Lighting Control
- Section 9.4.1
 - Lighting Control

RECEPTIONIST



LIST OF DEVICES

	20A 120-277V Power Pack MPP-24	3
	Multi-Tech Ceiling Mount Occupancy Sensor MDC-50L	1
	Daylight harvesting, Indoor MPL-010	1
	Low Voltage 0-10V Dimmer LVD-101	2
	Low Voltage to Cat-5 coupler LV-Cat5	5
	20A 125V Half-Controlled Receptacle 63200-TR-PLH	6

FEATURES

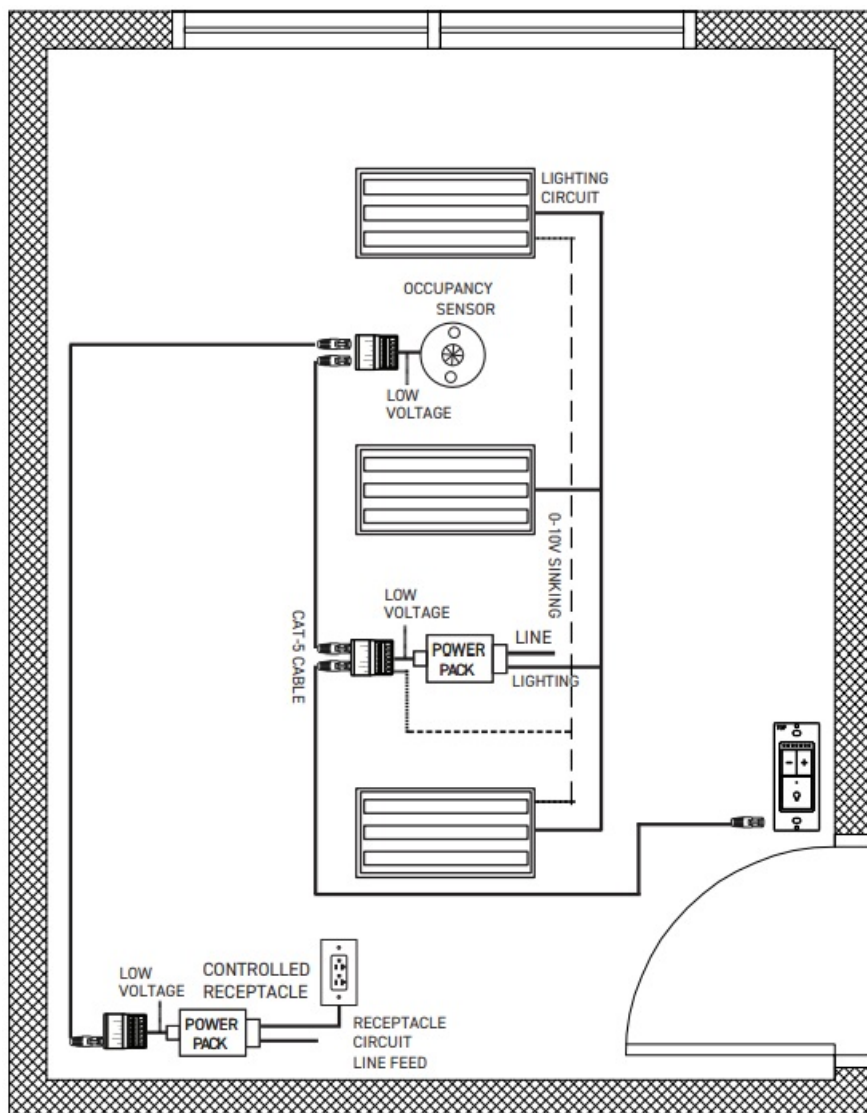
- Decorator dimmer
- 0-10V Dimming Control
- Daylight Harvesting
- Vacancy or Occupancy Sensing with Auto-OFF
- Plug Load Control with Power Pack

Note: 50% of all receptacles in applicable spaces must be controlled by an occupancy sensor.






Meets the Following Requirements:

- Section 8.4.2
 - Automatic Receptacle Control
- Section 9.4.1.1
 - Interior Lighting Control
- Section 9.4.1
 - Lighting Control

SMALL OFFICE SINGLE ZONE



LIST OF DEVICES

	20A 120-277V Power Pack MPP-24	2
	Multi-Tech Ceiling Mount Occupancy Sensor MDC-50L	1
	Low Voltage 0-10V Dimmer LVD-101	1
	Low Voltage to Cat-5 coupler LV-Cat5	3
	20A 125V Half-Controlled Receptacle 63200-TR-PLH	6

FEATURES

- Decorator dimmer
- 0-10V Dimming Control

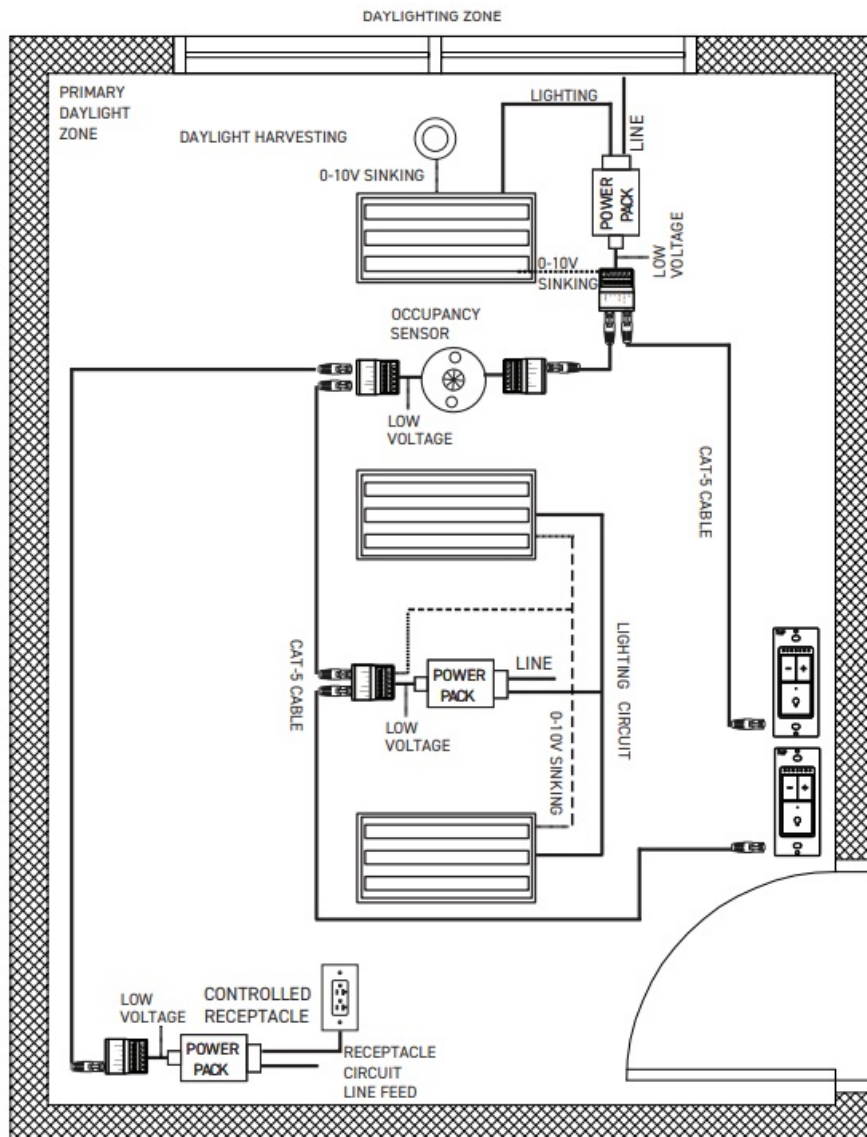
- Vacancy or Occupancy Sensing with Auto-OFF
- Plug Load Control with Power Pack

Note: 50% of all receptacles in applicable spaces must be controlled by an occupancy sensor.

Meets the Following Requirements:

- Section 8.4.2
 - Automatic Receptacle Control
- Section 9.4.1.1
 - Interior Lighting Control
- Section 9.4.1
 - Lighting Control

SMALL OFFICE DUAL ZONE



LIST OF DEVICES

	20A 120-277V Power Pack MPP-24	3
	Multi-Tech Ceiling Mount Occupancy Sensor MDC-50L	1
	Daylight harvesting, Indoor MPL-010	1
	Low Voltage 0-10V Dimmer LVD-101	2
	Low Voltage to Cat-5 coupler LV-Cat5	5
	20A 125V Half-Controlled Receptacle 63200-TR-PLH	6

FEATURES

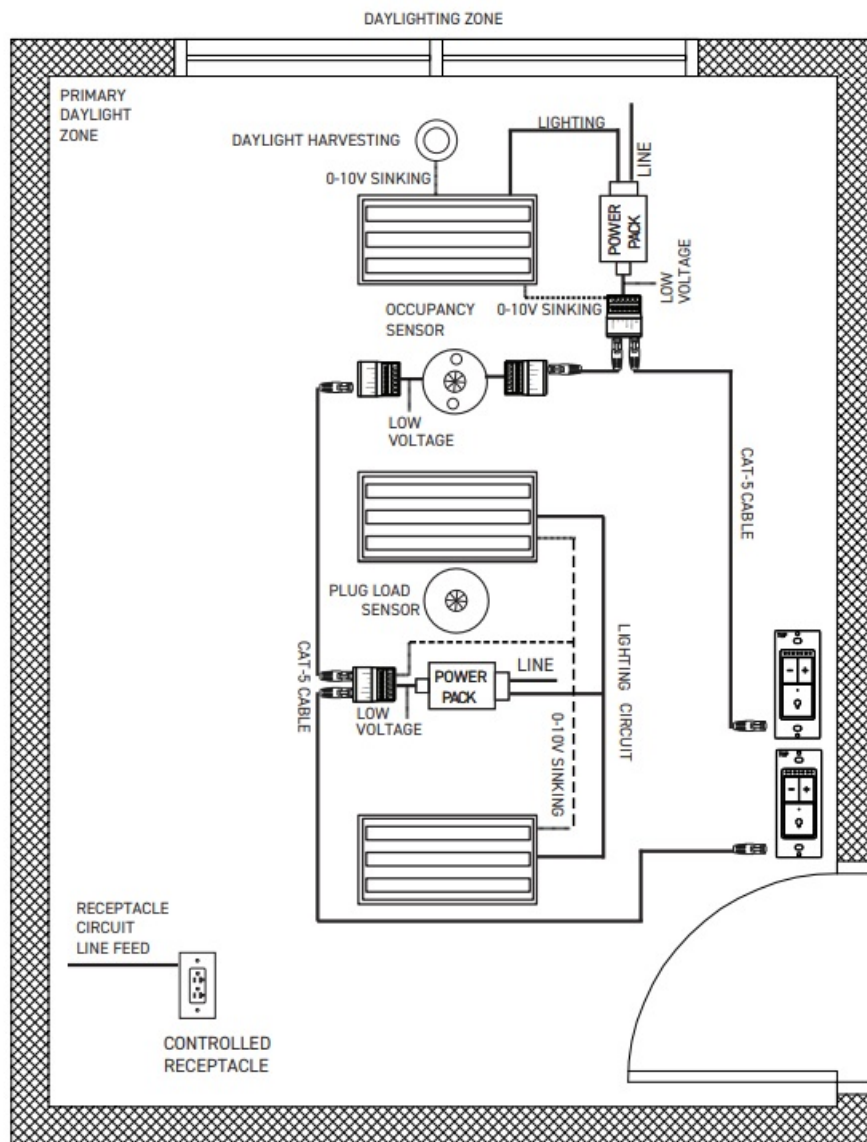
- Decorator dimmer
- 0-10V Dimming Control
- Daylight harvesting
- Vacancy or Occupancy Sensing with Auto-OFF
- Plug Load Control with Power Pack

Note: 50% of all receptacles in applicable spaces must be controlled by an occupancy sensor.








Meets the Following Requirements:

- Section 8.4.2
 - Automatic Receptacle Control
- Section 9.4.1.1
 - Interior Lighting Control
- Section 9.4.1
 - Lighting Control

SMALL OFFICE DUAL ZONE – WIRELESS PLUG LOAD



LIST OF DEVICES

	20A 120-277V Power Pack MPP-24	2
	Multi-Tech Ceiling Mount Occupancy Sensor MDC-50L	1
	Daylight harvesting, Indoor MPL-010	1
	Low Voltage 0-10V Dimmer LVD-101	2
	Low Voltage to Cat-5 coupler LV-Cat5	4
	Battery Powered Plug Load Sensor PL-BPC	1
	20A 125V Half-Controlled Receptacle PL-20R	6

FEATURES

- Decorator dimmer
- 0-10V Dimming Control
- Daylight harvesting
- Vacancy or Occupancy Sensing with Auto-OFF
- Wireless Plug Load Control

Note: 50% of all receptacles in applicable spaces must be controlled by an occupancy sensor.

Meets the Following Requirements:

- Section 8.4.2
 - Automatic Receptacle Control
- Section 9.4.1.1
 - Interior Lighting Control
- Section 9.4.1
 - Lighting Control

Control. Charge. Connect.

www.enerlites.com

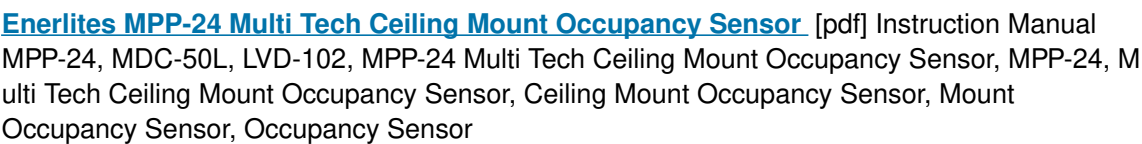
+1 [949-756-0536](tel:949-756-0536)

+1 [949-756-0528](tel:949-756-0528)

sales@enerlites.com

tech@enerlites.com

Documents / Resources



This website is an independent publication and is neither affiliated with nor endorsed by any of the trademark owners. The "Bluetooth®" word mark and logos are registered trademarks owned by Bluetooth SIG, Inc. The "Wi-Fi®" word mark and logos are registered trademarks owned by the Wi-Fi Alliance. Any use of these marks on this website does not imply any affiliation with or endorsement.