

Enerlites HET06-J-2H 2 Hour 7 Button Preset Countdown Timer Switch Instruction Manual

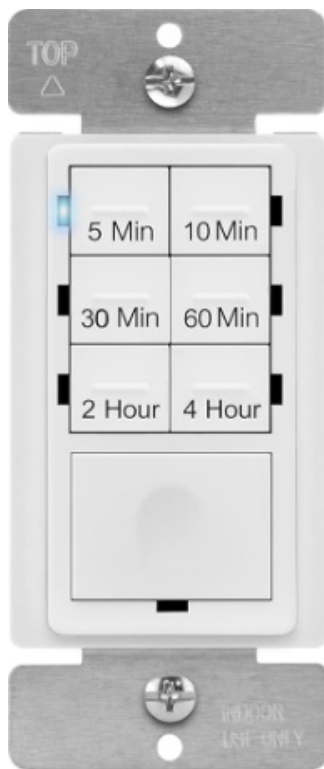
[Home](#) » [ENERLITES](#) » Enerlites HET06-J-2H 2 Hour 7 Button Preset Countdown Timer Switch Instruction Manual 

Contents

- [1 Enerlites HET06-J-2H 2 Hour 7 Button Preset Countdown Timer Switch](#)
- [2 Product Information](#)
- [3 SPECIFICATIONS](#)
- [4 DESCRIPTION](#)
- [5 WIRING DIRECTIONS](#)
- [6 SETTING/ OPERATING](#)
- [7 WARRANTY INFORMATION](#)
- [8 Documents / Resources](#)
 - [8.1 References](#)
- [9 Related Posts](#)

Enerlites®

Enerlites HET06-J-2H 2 Hour 7 Button Preset Countdown Timer Switch



Product Information

Product Name	HET06-J-2H Preset In-Wall Countdown Timer
Specifications	The HET06-J-2H is a timer switch with 6 preset time buttons and 1 Manual ON button. All Loads connect ed to this timer will automatically turn OFF when the selected time expires. The 6 selectable times are 5 Min, 10 Mins, 20 Mins, 30 Mins, 1H, and 2H.
Features	Seven-button Preset Time Switch, Time Delay options of 5, 10, 20, 30 minutes, 1H, and 2H. Can replace a standard light or fan single pole switch. Works with most common lighting types. Ideal for closet, pantry, garage, laundry room, outdoor lighting, and spa.

SPECIFICATIONS

- Resistive6.4A
- Tungsten800W
- Fluorescent800VA
- Electronic Ballast800VA
- Motor1/4 HP
- Time Delay5, 10, 20, 30 minutes, 1H, 2H
- Humidity95% RH, non-condensing
- Operation Temperature32° F–131° F

DESCRIPTION

The HET06-J-2H is a timer switch with 6 preset time buttons and 1 Manual ON button. All Loads connect to this

timer will automatically turn OFF when the selected time expires. The 6 selectable times are 5 Min, 10 Mins, 20 Mins, 30 Mins, 1H, 2H.

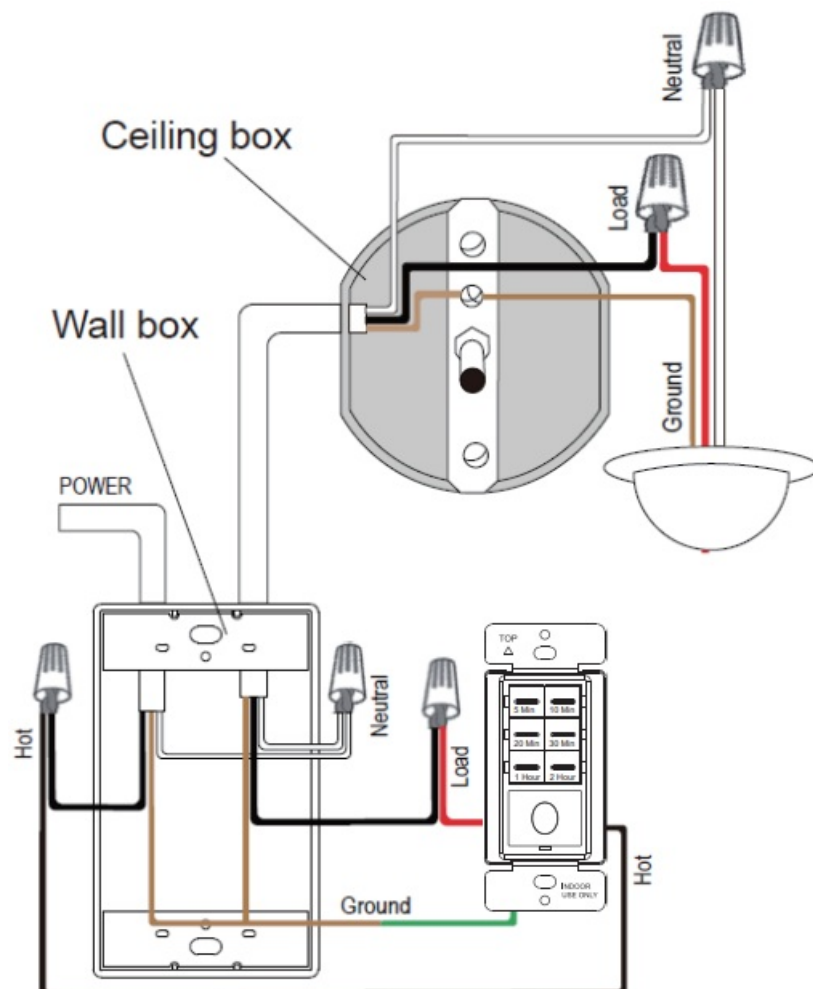
FEATURES

- Seven-button Preset Time Switch
- Time Delay 5, 10, 20, 30 minutes, 1H, 2H
- Replace a standard light or fan single pole switch
- Work with most common lighting types
- Ideal for closet, pantry, garage, laundry room, outdoor lighting and spa.

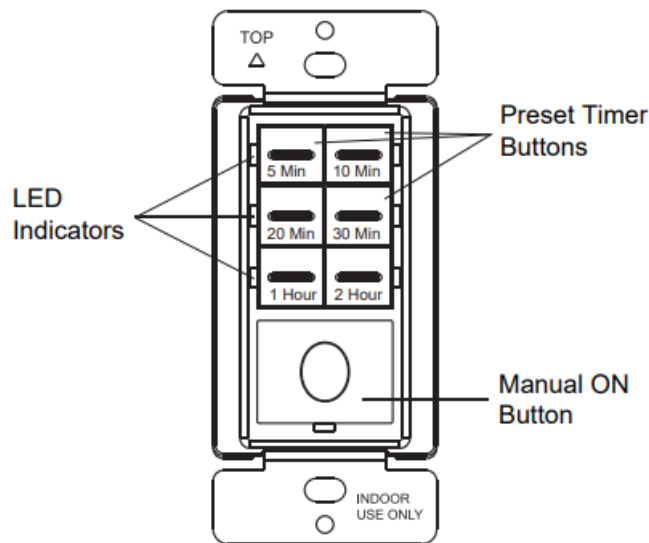
WARNING

- Turn the power off at the circuit breaker before installing the Timer.
- Read and understand these instructions before installing. It is recommended that a qualified electrician performs this installation. Make sure to turn off the circuit breaker or fuse(s) and make sure power is off before wiring the device.
- “Caution: High Voltage-Disconnect power supply before servicing”
- This device is intended for installation in accordance with the National Electric Code and local regulations.
- Use Copper wires ONLY.

WIRING DIRECTIONS



1. Connect the BLACK wire on the switch to the HOT wire.
2. Connect the RED wire on the switch to the LOAD wire.
3. Connect the GREEN wire on the switch to the GROUND wire.



SETTING/ OPERATING

- **Preset Buttons:** The LED indicator will blink twice to confirm each button press.

There are 6 buttons with preset times of 5 Min, 10 Mins, 20 Mins, 30 Mins, 1H, 2H.

- While the Load is OFF, press and release the button with the desired time once to turn the Load on for that selected amount of time.
 - When the time expires, the Load will automatically turn off.
- While the Load is ON, press and release the button with the desired time once to restart the countdown with the newly selected time.

- **Manual ON Button:** The LED indicator will blink twice to confirm each button press.

The Manual ON button is the large button located below the preset buttons.

- While the Load is OFF, press and release the Manual ON button to turn the Load ON with the last selected timer preset.
- While the Load is ON, press and release the Manual ON button to override the timer and turn the Load OFF.
- To hold the Load ON: Press and hold the Manual ON button for 8 seconds. The Load will turn ON and stay ON. The timer WILL NOT turn the Load OFF.
 - Press and release the Manual ON button to turn the Load OFF.
 - Press and release the button with the desired time once to keep the Load on for that selected amount of time.

- **LED Light:** the LED indicator light next to each selected button blinks twice each time it is pressed to mark the time selected.

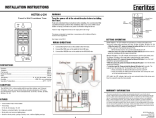
WARRANTY INFORMATION

This device is warranted to be free of material and workmanship defects for 2 years from the date of purchase. Original receipt or proof of purchase from an authorized retailer must be presented upon warranty claim. ALL

claims must be verified and approved by Enerlites, Inc. Warranties from other Enerlites products may vary. This warranty is nontransferable and does not cover normal wear and tear or any malfunction, failure, or defect resulting from misuse, abuse, neglect, alteration, modification, or improper installation. To the fullest extent permitted by the applicable state law, Enerlites shall not be liable to the purchaser or end user customer of Enerlites products for direct, indirect, incidental, or consequential damages even if Enerlites has been advised of the possibility of such damages. Enerlites' total liability under this or any other warranty, express or implied, is limited to repair, replacement or refund. Repair, replacement or refund are the sole and exclusive remedies for breach of warranty or any other legal theory.

2022 Enerlites Inc.
CA, U.S.A.
WWW.ENERLITES.COM
0204220195
REV 20230802

Documents / Resources

	Enerlites HET06-J-2H 2 Hour 7 Button Preset Countdown Timer Switch [pdf] Instruction Manual HET06-J-2H 2 Hour 7 Button Preset Countdown Timer Switch, HET06-J-2H, 2 Hour 7 Button Preset Countdown Timer Switch, Preset Countdown Timer Switch, Countdown Timer Switch, Timer Switch
--	---

References

- [🏠 Homepage - Enerlites - Electrical Supplier](#)
- [User Manual](#)