

ENCELIUM
PD Osram
Sensor for
Luminaire



encelium PD Osram Sensor for Luminaire Instruction Manual

[Home](#) » [ENCELIUM](#) » encelium PD Osram Sensor for Luminaire Instruction Manual 

Contents

- 1 encelium PD Osram Sensor for Luminaire
- 2 Product Information
- 3 Product Usage Instructions
- 4 GETTING STARTED
- 5 PRODUCT SAFETY
- 6 WIRED SYSTEM OVERVIEW
- 7 FEATURES
- 8 SENSOR SETTINGS
- 9 ADJUSTING THE SENSOR SHUTTER
- 10 SENSOR DETECTION RANGE
- 11 FAQ
- 12 Documents / Resources
 - 12.1 References
- 13 Related Posts

ENCELIUM

encelium PD Osram Sensor for Luminaire



Product Information

Specifications

- **Product Name:** DALI LS PD LI
- **Dimensions Option 2:** 15.4 x 55.4 mm (0.6 x 2.2 inches)
- **Dimensions Option 3:** 14 x 41 mm (0.5 x 1.6 inches)
- **Power Consumption:** Approximately 6 mA

Product Usage Instructions

Luminaire Integration Option 2 Installation

1. A 15.4 x 55.4 mm hole must be cut before installing the DALI LS PD LI.
2. Install Cover 1 on the DALI LS PD LI and connect the sensor cable to the DALI Line.
3. Place the DALI LS PD LI into the luminaire hole and secure it by snapping the cover mounting clips.
4. The raised surface of the cover should sit outside the luminaire opening.

Luminaire Integration Option 3 Installation

1. A 14 x 41 mm hole must be cut before installing the DALI LS PD LI.
2. Install Cover 2 on the DALI LS PD LI and connect the sensor cable to the DALI Line.
3. Place the DALI LS PD LI into the luminaire hole and secure it by snapping the cover mounting clips.
4. The raised surface of the cover should sit flush within the luminaire opening.

GETTING STARTED

OVERVIEW

The DALI LS PD LI is a compact light and presence sensor that is easily attached to a luminaire. The sensor communicates to the Encelium Wired Manager — DALI via directly connect DALI bus. For more information on product specifications and design tools visit [encelium.com](https://www.encelium.com).

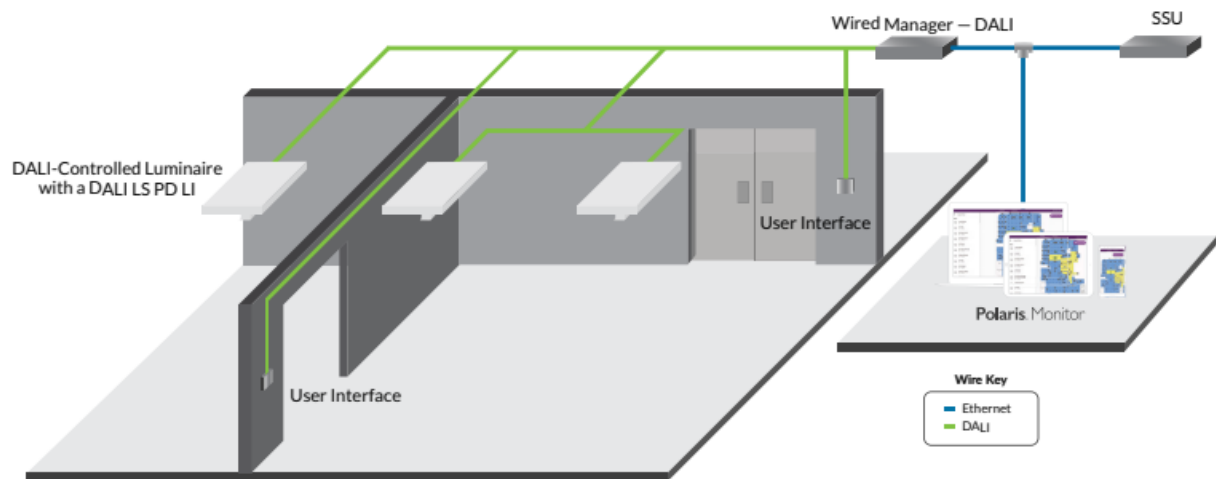
PRODUCT SAFETY

READ THESE INSTRUCTIONS BEFORE USING THE PRODUCT

When using electrical equipment, basic safety precautions should always be followed, including the following:

- Do not mount near gas or electric heaters or let power supply cords touch hot surfaces.
- Equipment should be mounted in locations and at heights where it will not readily be subjected to tampering by unauthorized personnel.
- The use of accessory equipment is not recommended by Encelium as it may cause an unsafe condition.
- All DALI channels are internally connected together to the control unit. Make sure to consider this when installing.
- Do not use this equipment for other than the intended use.

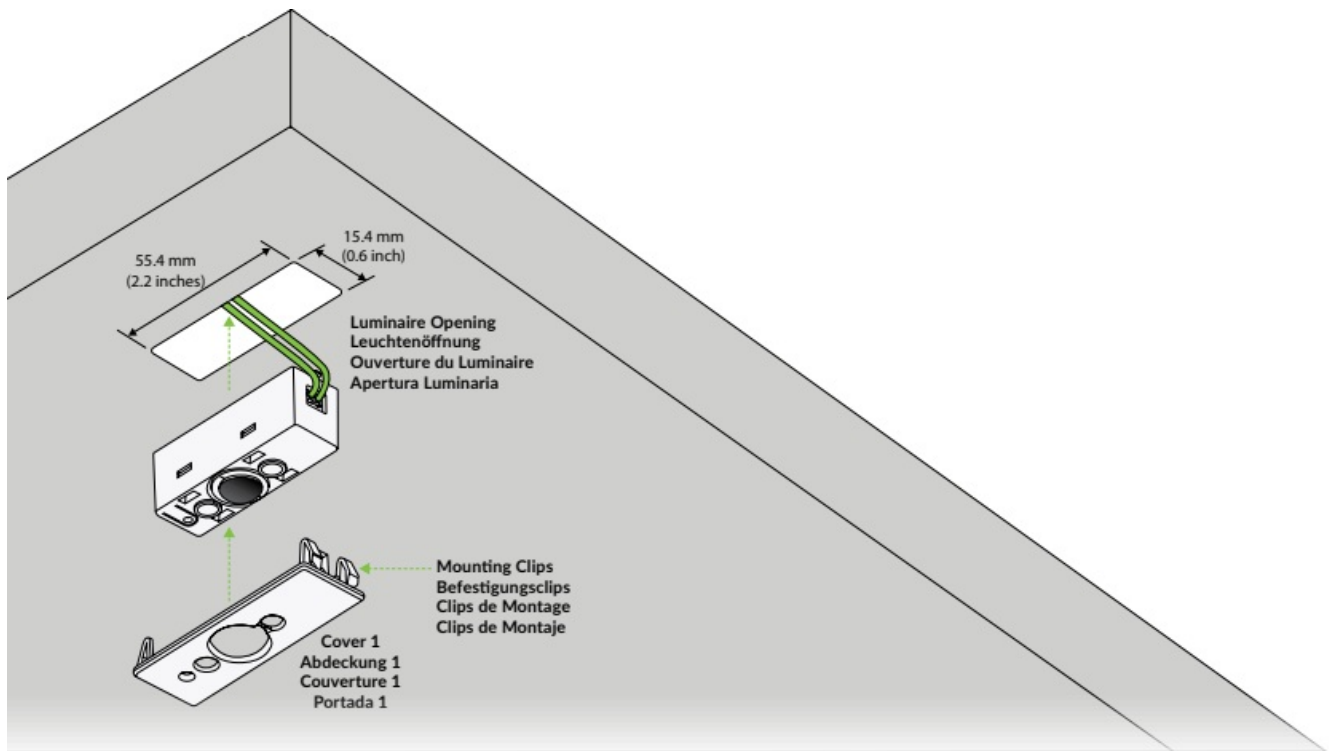
WIRED SYSTEM OVERVIEW



Encelium X enables you to control DALI devices. With any Encelium wired design, you get a reliable, lighting control system that can be installed quickly and easily.

STEP 1: LUMINAIRE INTEGRATION OPTION 1

Proceed to Luminaire Integration option 2 if not using option 1.

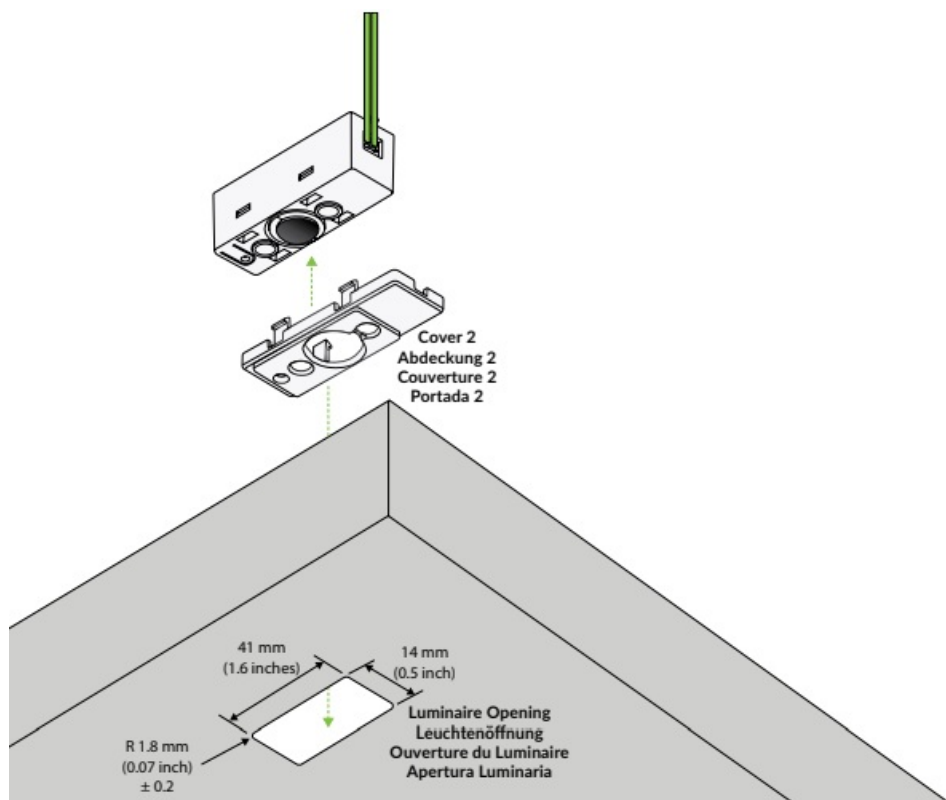


A 15.4 x 55.4 mm (0.6 x 2.2 inches) hole must be cut prior to installing the DALI LS PD LI. Install Cover 1 on the DALI LS PD LI and connect the sensor cable to the DALI Line. Then place the DALI LS PD LI into the luminaire hole. Secure the DALI LS PD LI by snapping the cover mounting clips into the luminaire. The raised surface of the cover sits outside the luminaire opening.

Note: The DALI LS PD LI is supplied from DALI Voltage as per DALI standard EN 62386. Power consumption approximately 6 mA.

LUMINAIRE INTEGRATION OPTION 2

Proceed to Luminaire Integration option 3 if not using option 2.

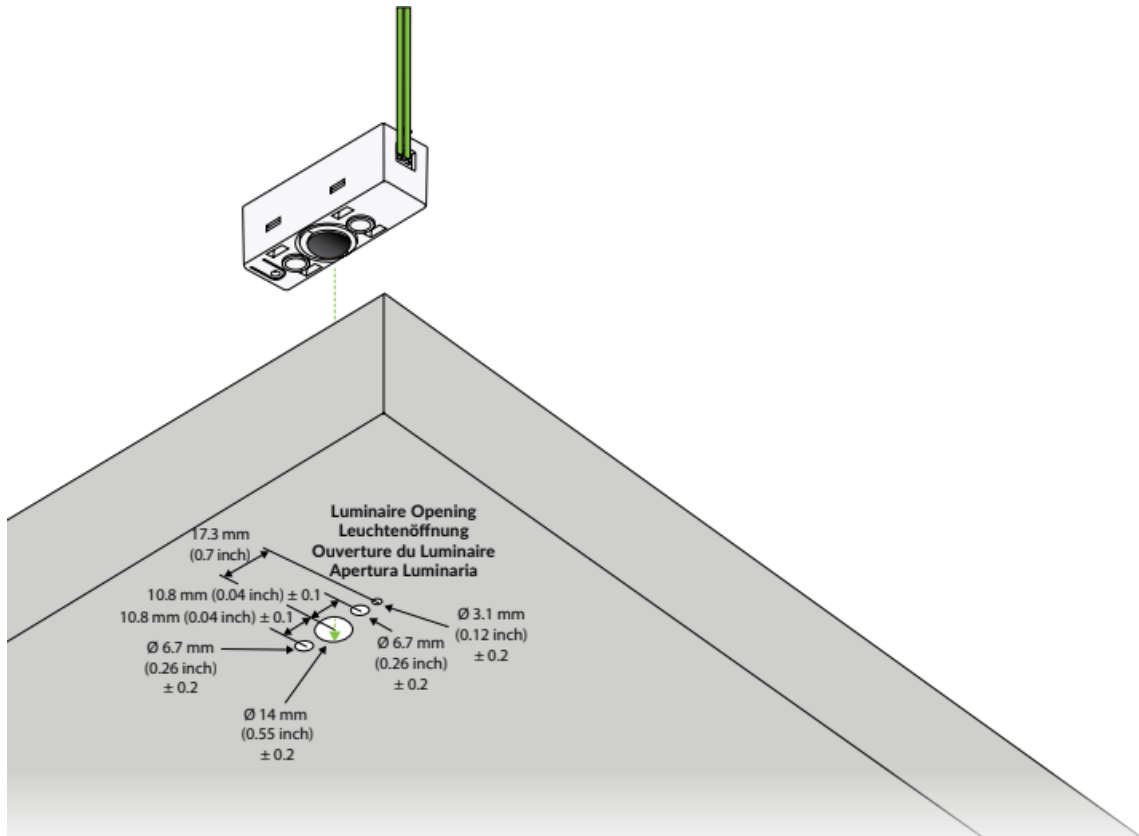


A 14 x 41 mm (0.5 x 1.6 inches) hole must be cut prior to installing the DALI LS PD LI. Install Cover 2 on the DALI LS PD LI and connect the sensor cable to the DALI Line. Then place the DALI LS PD LI into the luminaire hole. Secure the DALI LS PD LI by snapping the cover mounting clips into the luminaire. The raised surface of the cover sits flush within the luminaire opening.

Note: The DALI LS PD LI is supplied from DALI Voltage as per DALI standard EN 62386. Power consumption approximately 6 mA.

LUMINAIRE INTEGRATION OPTION 3

Proceed to Step 2 if you are not using Luminaire Integration option 3.

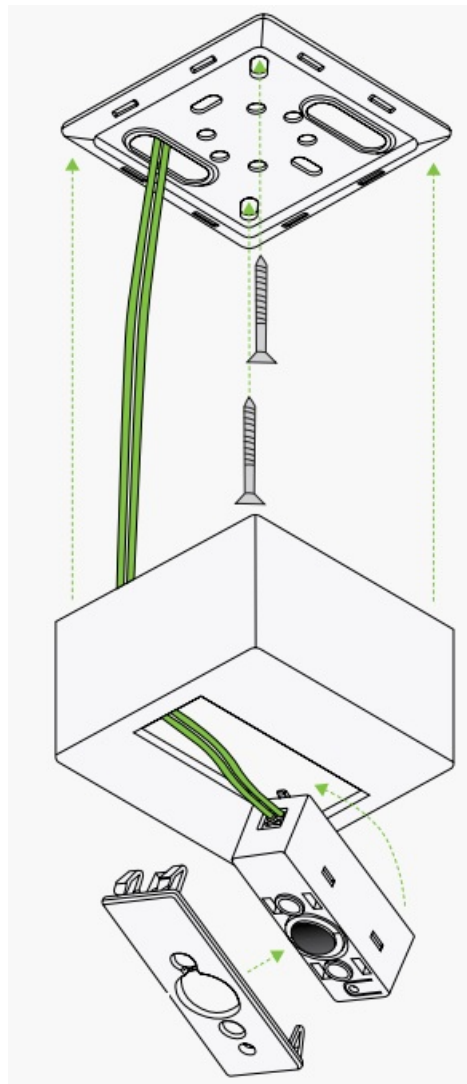


Holes must be cut prior to installing the DALI LS PD LI. Connect the DALI LS PD LI sensor cable to the DALI Line. Then place the DALI LS PD LI into the luminaire holes. If the sensor is in the correct mounting position, the raised surface of the sensor sits flush within the luminaire opening.

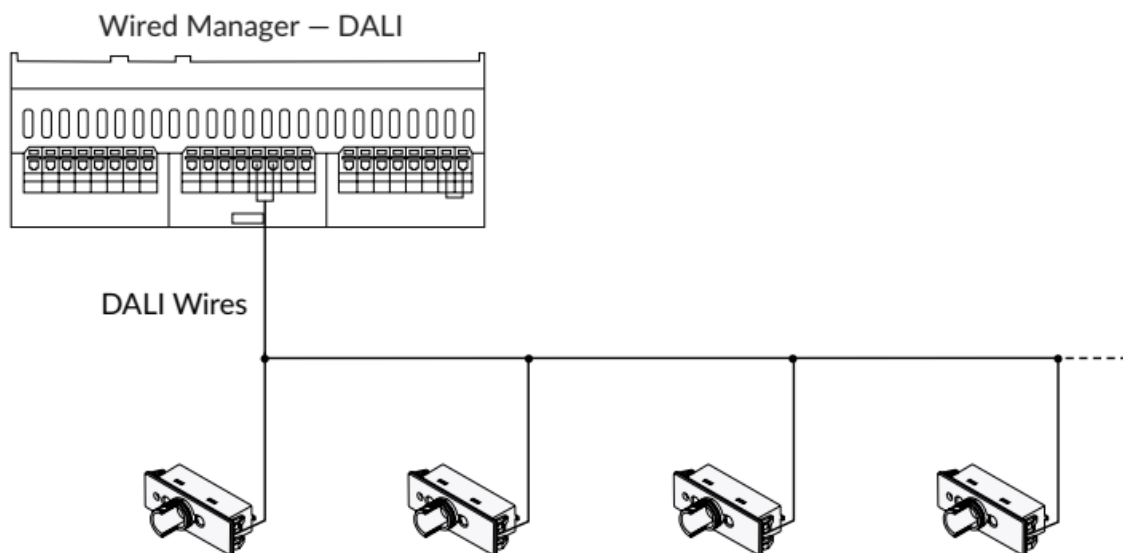
Note: The DALI LS PD LI is supplied from DALI Voltage as per DALI standard EN 62386. Power consumption approximately 6 mA.

STEP 2: CONCRETE CEILING INTEGRATION (Optional)

The Surface Mount LS PD AP KIT (purchased separately) is used to install the DALI LS PD LI onto a concrete ceiling. Screw the LS PD AP KIT base into the concrete ceiling. Place Cover 1 (included with sensor) onto the DALI LS PD LI Sensor, connect the sensor wires, and snap into the LS PD AP KIT cover opening. Snap the LS PD AP KIT cover into the base.

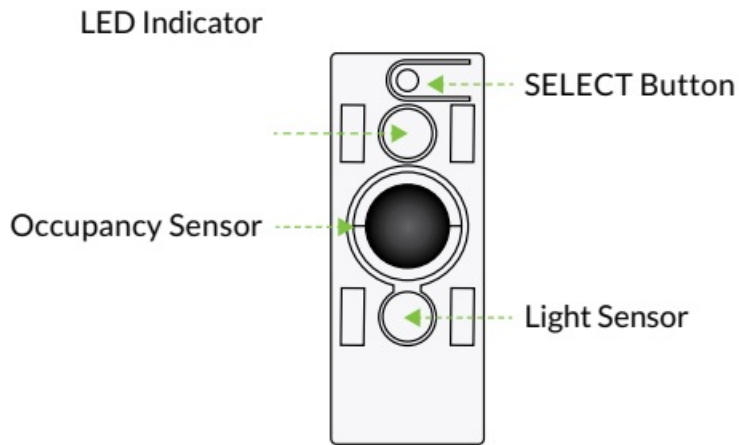


STEP 3: WIRING MULTIPLE DALI LS PD LIs



If multiple DALI LS PD LIs are used see how to connect them to the Wired Manager — DALI above.

FEATURES

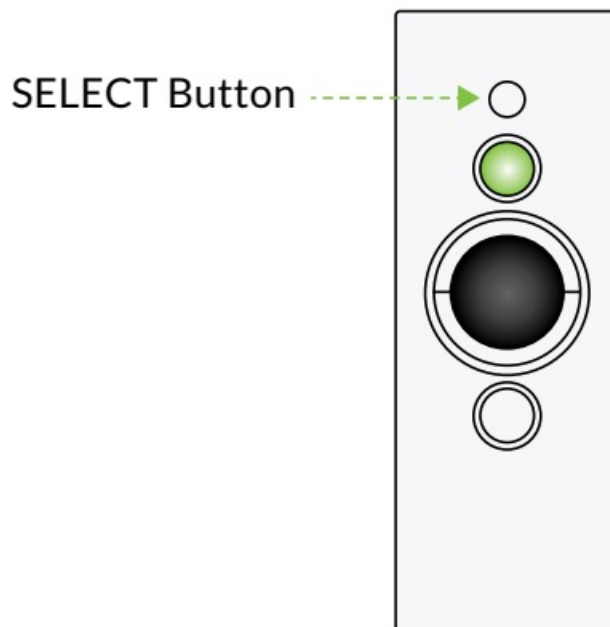


DALI LS PD LI features an Occupancy and Light Sensors, SELECT Button, and LED Indicator. The SELECT Button enables you to identify a device and reset to factory default settings. The LED Indicator displays green or red lights (see the DALI LS PD LI LED Indicator details below).

DALI LS PD LI LED Indicator Lights

- **Green LED Indicator Flashes:** Motion is detected.
- **Green LED Indicator Illuminates Continuously:** Motion detection is temporarily deactivated.
- **Red LED Indicator Flashes 3 Times:** IR Signal of remote control has been received.
- **Red LED Indicator Flashes 1 Time:** Vibration has been detected.
- **Red LED Indicator Illuminates Continuously:** 100h burn-in is active.

SENSOR SETTINGS

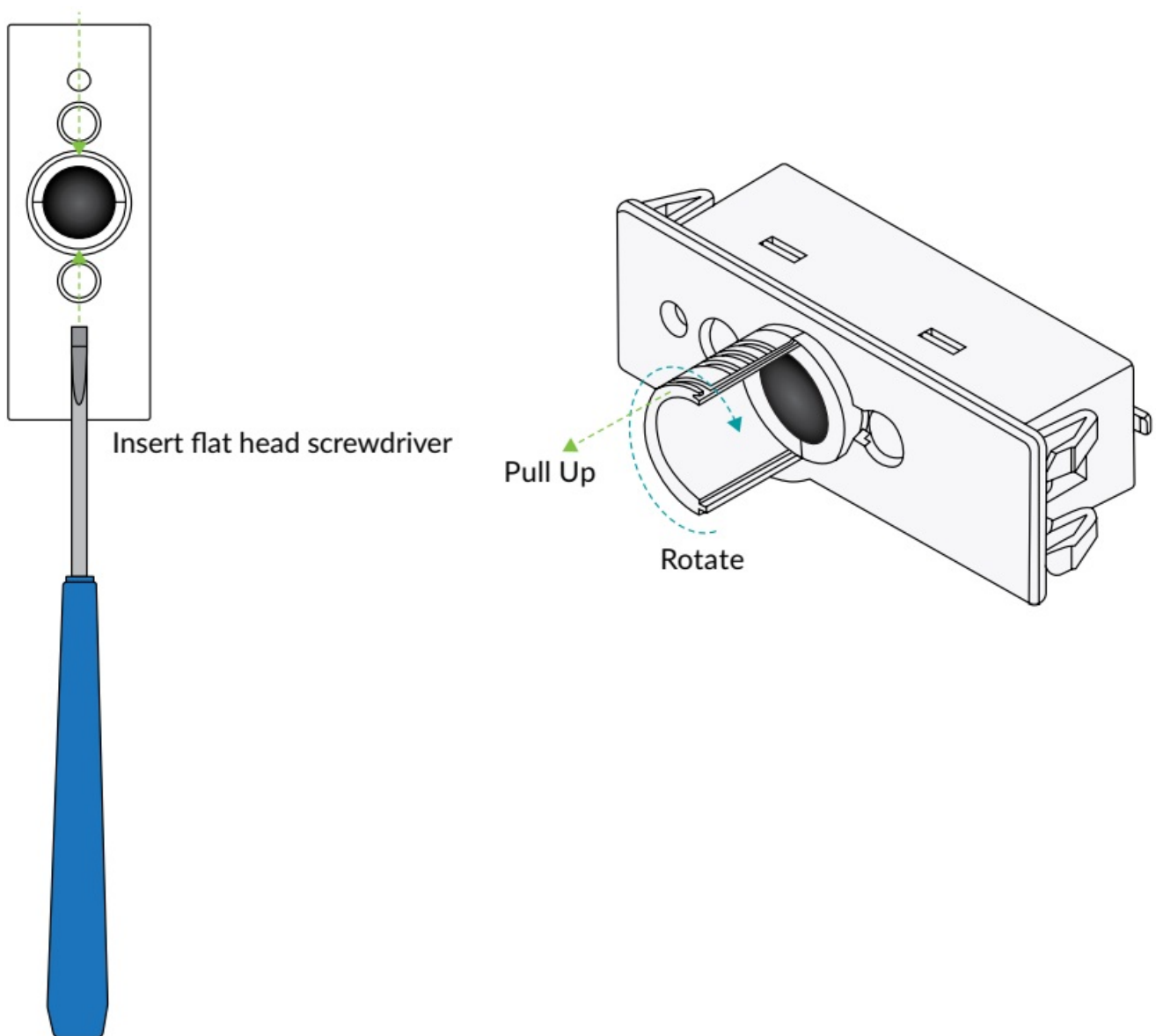


The SELECT Button executes different functions depending on the duration of activation.

- Press the SELECT Button to test the DALI connection — 1 press LED ON, another press LED OFF.
- Press and hold the SELECT Button to start the reset. The LED flashes for approximately 10 seconds.

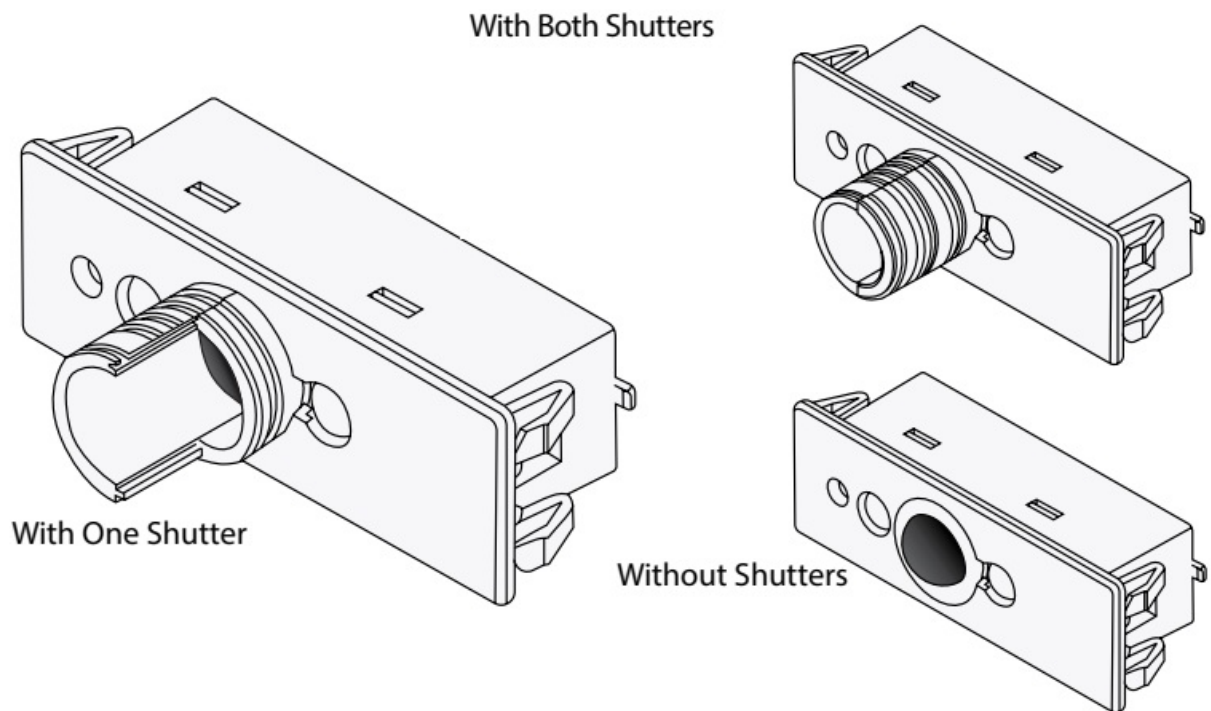
The DALI LS PD LI is set back to the factory settings and all addresses are deleted.

ADJUSTING THE SENSOR SHUTTER

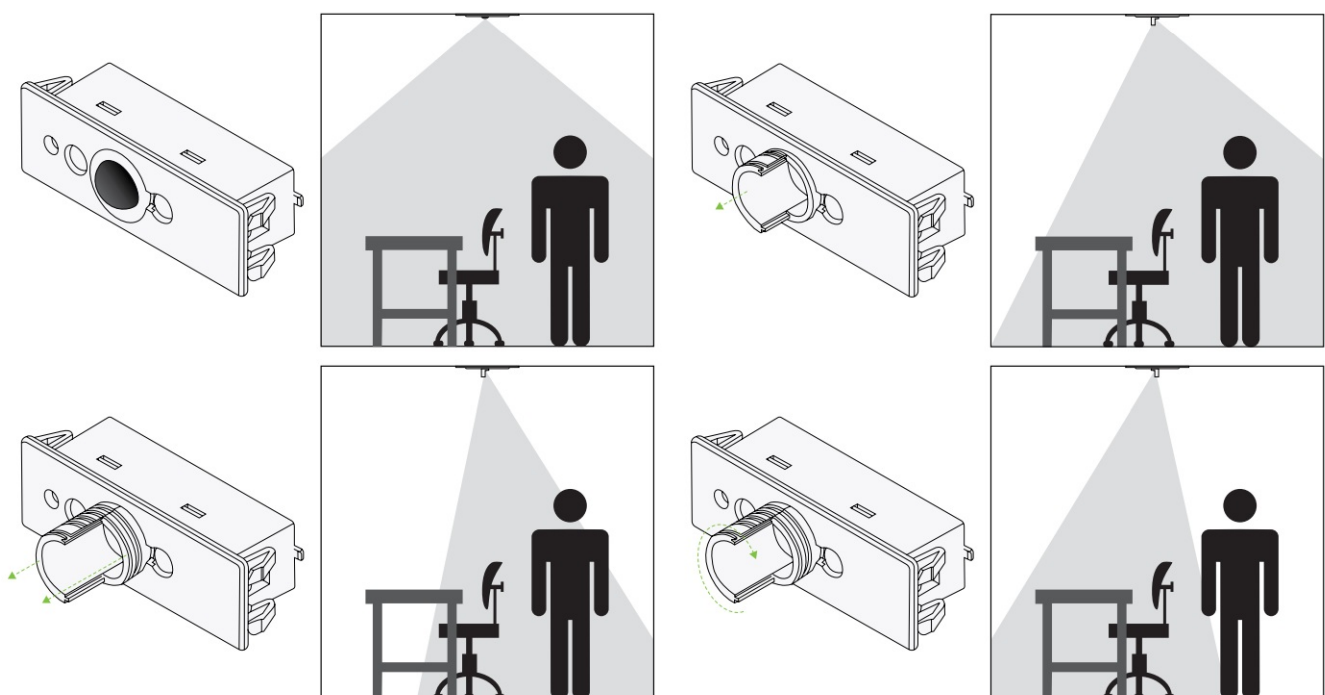


Using a small screwdriver pull up on the shutter sides. Remove, insert, or rotate one or both shutters where necessary.

SENSOR DETECTION RANGE



The detection range of the DALI LS PD LI sensor is determined by the shutter position.



By changing the shutter position, you can influence the detection range of the sensor directionally and avoid undesired presence detection.

© Copyright 2024 Legrand All Rights Reserved.

FAQ


Q: What is the power consumption of the DALI LS PD LI?

A: The power consumption is approximately 6 mA.

Q: Where can I find more information on product specifications and design tools?

A: For more information, visit encelium.com.

Documents / Resources

	<p>encelium PD Osram Sensor for Luminaire [pdf] Instruction Manual LS, PD, LI, PD Osram Sensor for Luminaire, PD, Osram Sensor for Luminaire, Sensor for Luminaire, for Luminaire, Luminaire</p>
---	--

References

- [E Encelium - Exceptional Lighting Management](#)
- [User Manual](#)

[Manuals+](#), [Privacy Policy](#)

This website is an independent publication and is neither affiliated with nor endorsed by any of the trademark owners. The "Bluetooth®" word mark and logos are registered trademarks owned by Bluetooth SIG, Inc. The "Wi-Fi®" word mark and logos are registered trademarks owned by the Wi-Fi Alliance. Any use of these marks on this website does not imply any affiliation with or endorsement.